

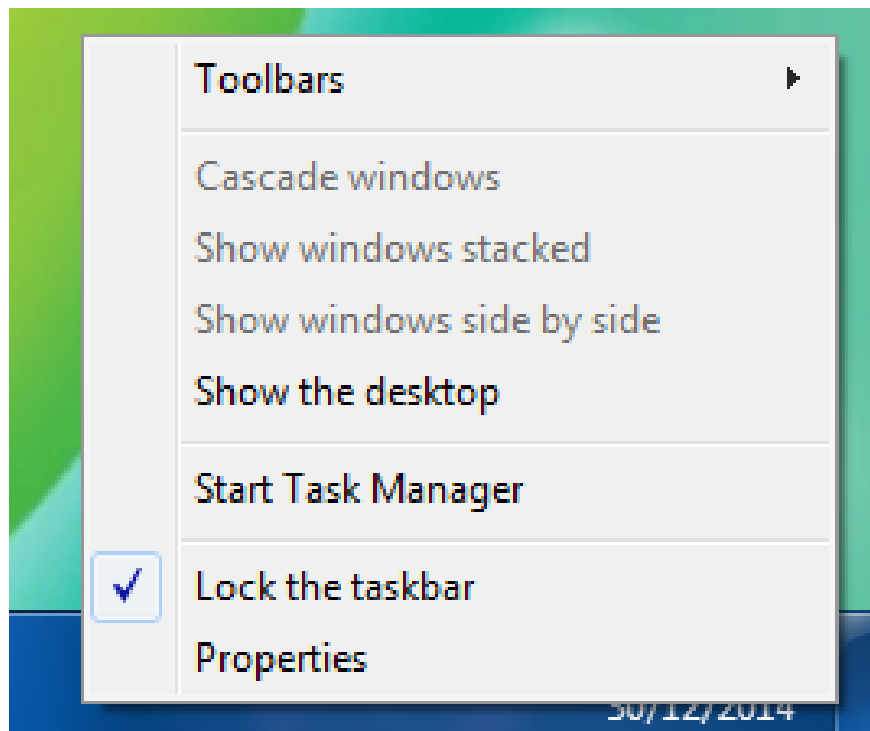
How to turn it back on, restart Windows Explorer when it hangs

How to turn it back on and restart Windows Explorer when it crashes - Windows Explorer is a manager of Windows activities, sometimes you encounter the problem of slow or stuck Windows Explorer and other programs are still used. often.

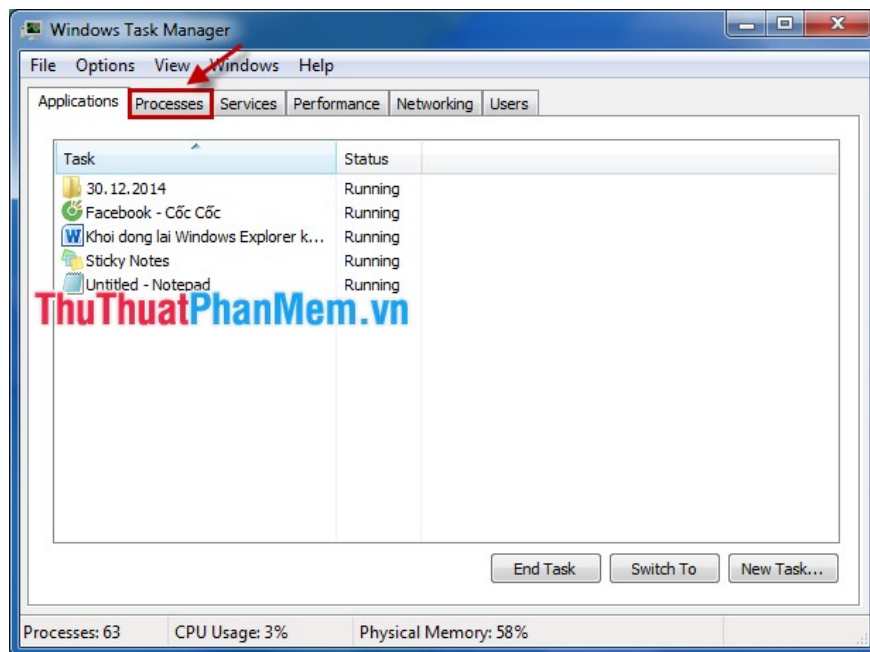
Windows Explorer is a management of Windows activities, sometimes you encounter the problem of slow or frozen Windows Explorer and other programs are still used normally. You usually start your computer to stop slowing, but you can also restart Windows Explorer without having to take time to start your computer.

The article shows how to restart Windows Explorer without restarting the computer.

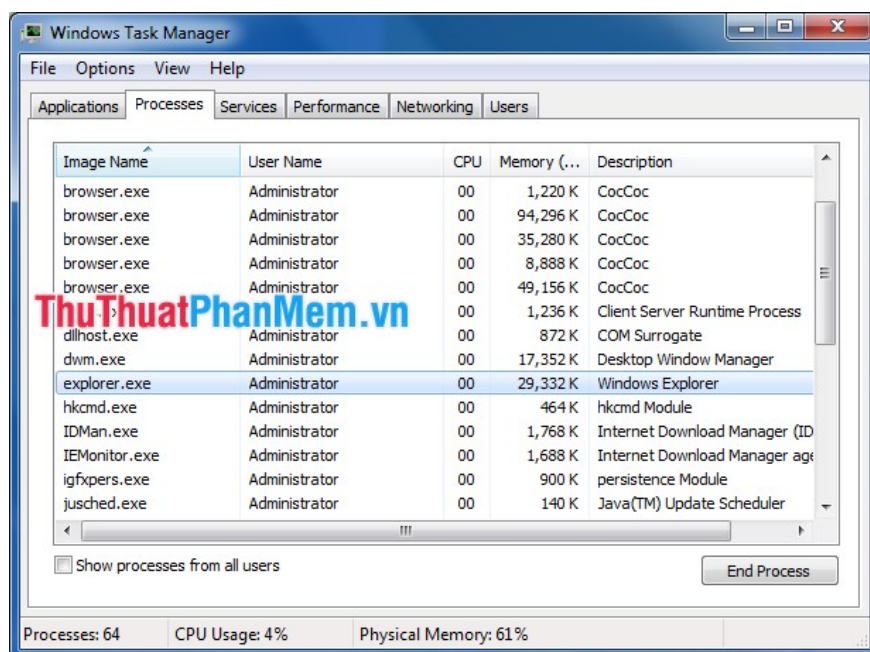
Step 1: Open Windows Task Manager. Right-click on the taskbar and select **Start Task Manager** (or press **Ctrl + Shift + Esc**).



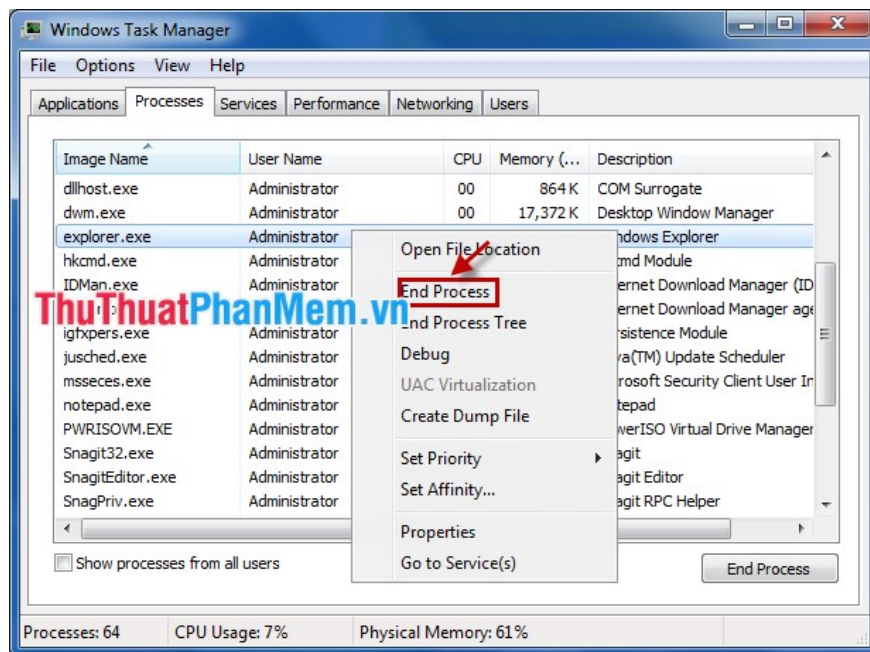
Step 2: In Windows Task Manager, select the **Processes** tab .



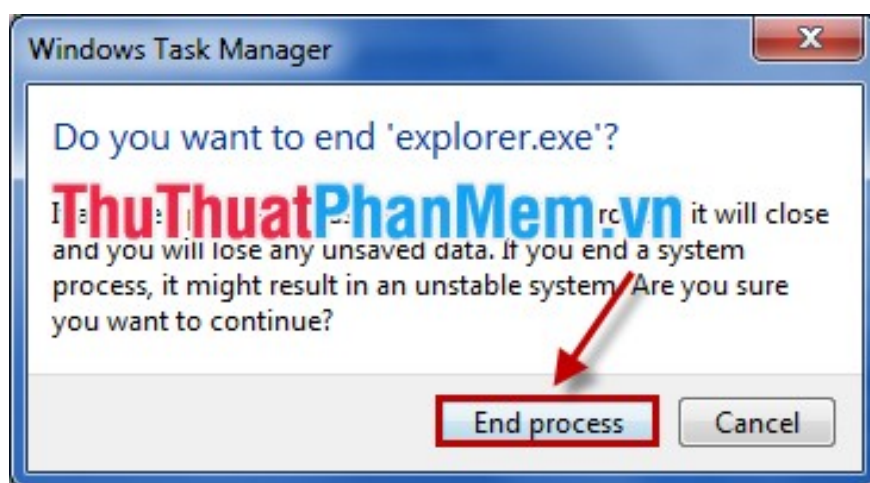
Step 3: In Image Name, navigate to *explorer.exe* .



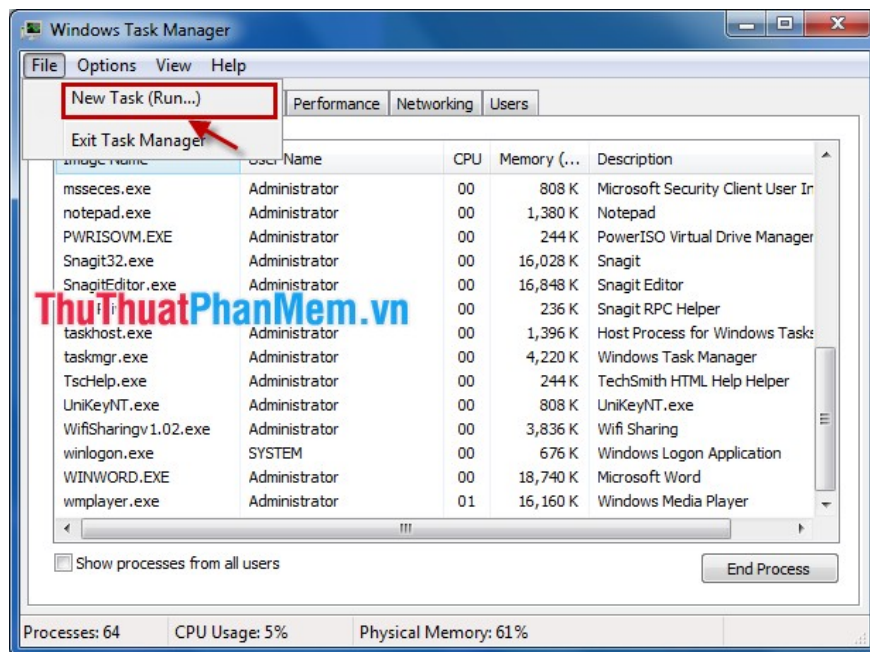
Step 4: Right-click *explorer.exe* and select **End Process** to stop Windows Explorer.



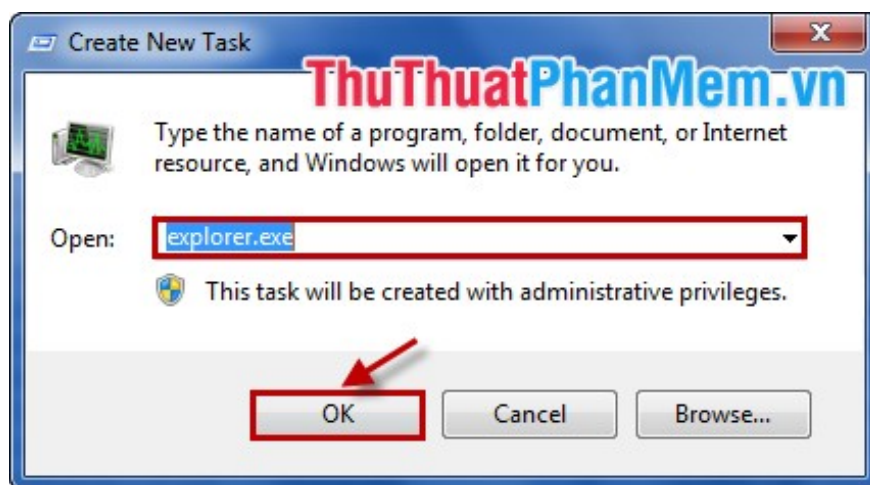
A dialog box appears informing you that you select **End process** to confirm.



Step 5: Reopen the Windows Explorer process. From the Windows Task Manager interface, select **File -> New Task (Run .)**.



Enter *explorer.exe* in the **Open** box and select **OK** or press **Enter** so Windows Explorer will restart.



From now on if Windows Explorer is slow or unresponsive, you don't need to restart your computer, just restart Windows Explorer.

Good luck!

You finished reading the article "**How to turn it back on, restart Windows Explorer when it hangs**" edited by the [TipsMake](#) team. We hope this article has provided you with many useful tech tips and tricks. You can search for similar articles on tips and guides. Thank you for reading and for following us regularly.