

How to transfer pictures from digital camera to computer

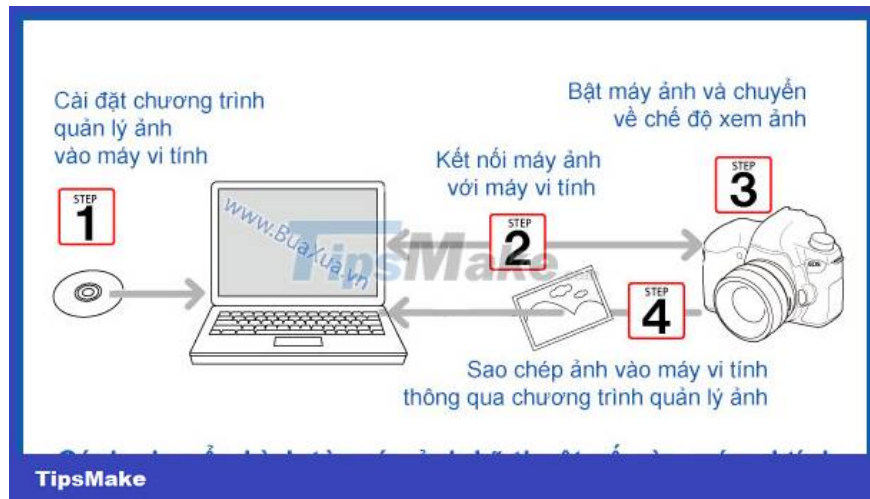
You can easily transfer files from your digital camera to your computer in many ways

After capturing images from a digital camera, you may want to transfer these images to a computer for storage or processing and printing. This is not too difficult and you will easily transfer files from your digital camera to your computer in the following ways.



How to transfer pictures from digital camera to computer first

Use the photo management program that came with your digital camera



Transfer photos to a computer through a photo management program

1. First, install the photo management program on the CD/DVD that came with your digital camera. If you don't have an installation disc, you can find it on the manufacturer's Web site.
2. After installing the photo management program, plug the connection cord between the digital camera and the computer's USB port.
3. Now turn on the camera by pressing the **On / Off** button .
4. Press the Play button



to switch the camera to View - Play, View mode.

5. Windows will automatically recognize the device and display a dialog box asking what you want to do.
6. Please close this dialog box and open the image management program.
7. You can now use the image management program's tools to copy or manipulate images of your choice.
8. Once done, unplug the connection cable and turn off the camera.

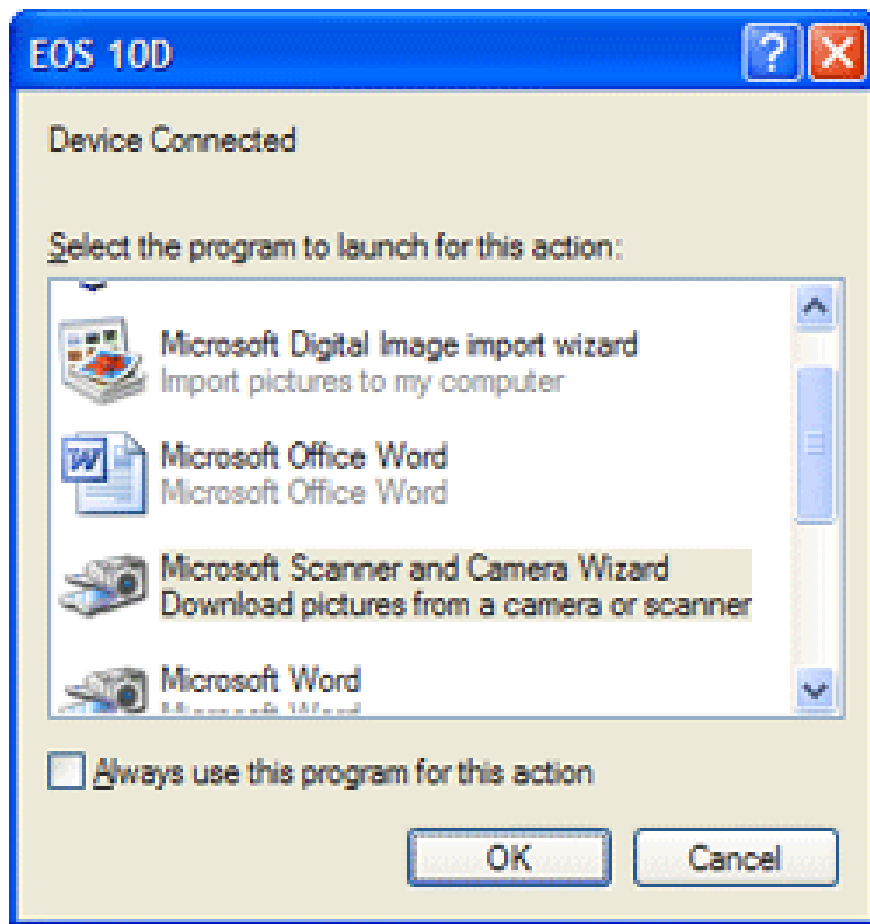
Connect the digital camera to the computer using the USB cable

1. First, plug the connection cord between the digital camera and the computer's USB port.
2. Turn on the camera by pressing the **On / Off** button .
3. Press the Play button



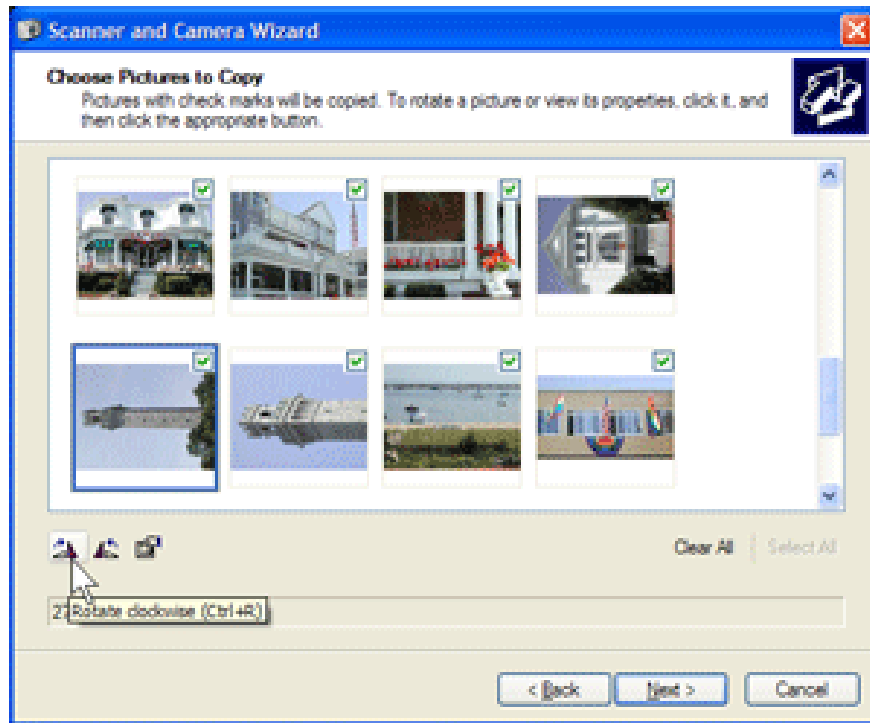
to switch the camera to View - Play, View mode.

4. Windows will automatically recognize the device and display a dialog box asking what you want to do.
5. Please select **Microsoft Scanner and Camera Wizard** , click OK



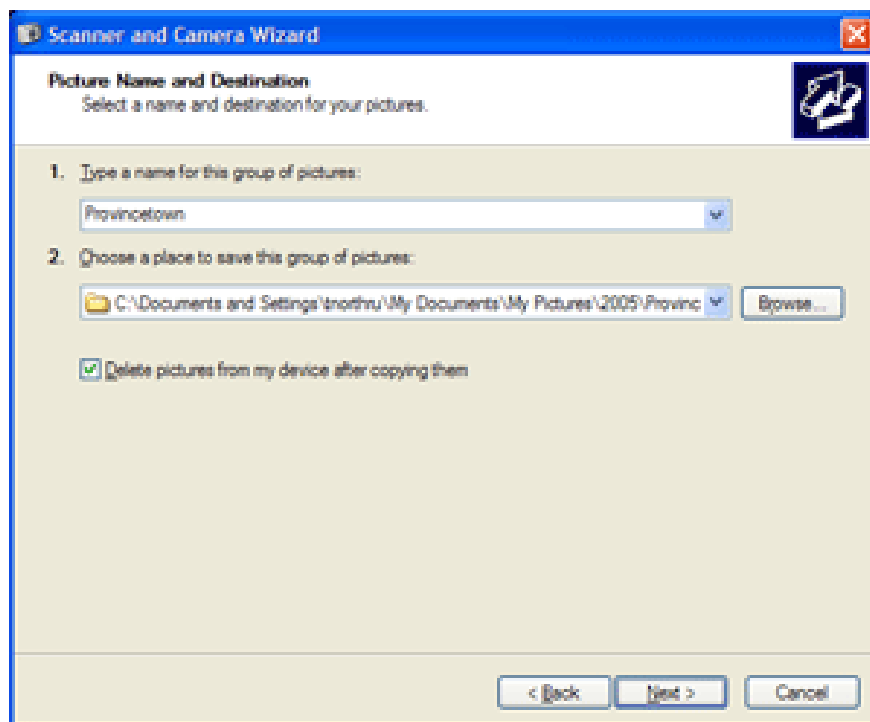
Microsoft Scanner and Camera Wizard

1. **The Scanner and Camera Wizard** window appears , all the images located on the digital camera's memory card will be displayed in the **Choose Pictures to Copy** window . By default Windows will select all images, if you do not want to transfer any images to your computer, delete the mark of that image. At this step you can also rotate the image by clicking on the image and select **Rotate clockwise** - rotate the image clockwise or **Rotate counterclockwise** - rotate the image counterclockwise.
2. After selecting, please click Next



Scanner and Camera Wizard

1. **At the Picture Name and Destination** screen, enter a common name for the images in the **type a name for the group of pictures** field, then the images will have this common name with the ordinal number. For example, if you name it image, the images will be named . respectively image001 image002



Select the drive and folder to copy the images to the computer

1. Next, click Browse and select the folder you want to contain these images. It is recommended that you create multiple folders to hold pictures of different themes.

2. If you want to delete all the pictures on the memory card after transferring them to your computer, check the box **Delete pictures from my device after copying them** .
3. After selecting, click Next to copy the image to the computer.
4. After the image has been transferred to the computer, the **Other Options** screen appears, now you can choose to put the image on the Web or print it as you like. If you don't want to do anything, select **Nothing** and click Next
5. Finally, click Finish to finish.
6. **The Windows Explorer** window will open and display the transferred images.
7. You can now unplug the USB connection cord from the computer.

3

Using a memory card reader - Card Reader

1. You need a memory card reader called a Card Reader.
2. Plug the memory card reader's connection cable into the computer's USB port. If you are using Windows, the driver will be automatically installed for this device.
3. Now remove the memory card from the digital camera.



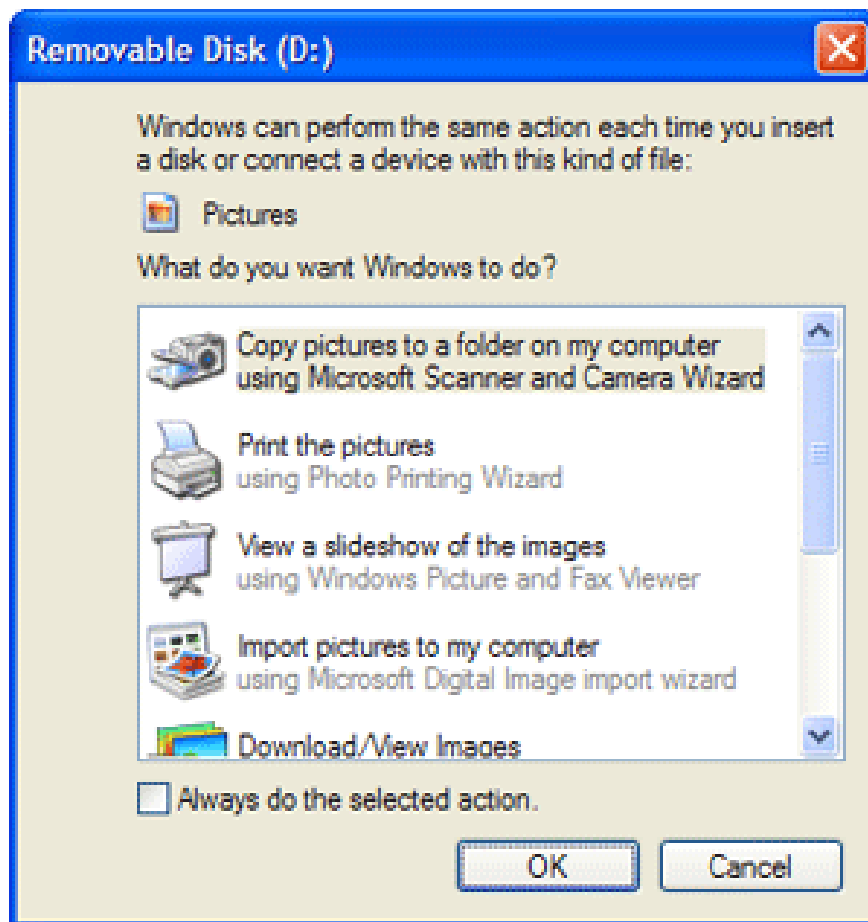
Remove the memory card from the digital camera

1. Insert the memory card into the correct slot for your memory card type on the memory card reader.



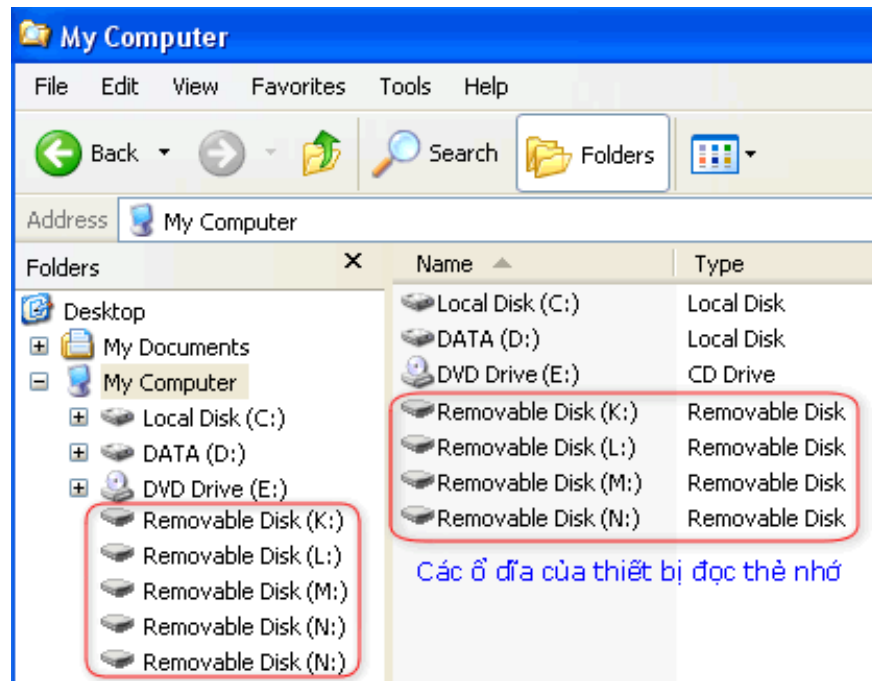
Insert into the slot of the memory card reader

1. If your computer is set to autorun - AutoRun, a message dialog box will appear asking what you want to do with this device.



Copy pictures to a folder on my computer using Microsoft Scanner and Camera Wizard

1. Select **Copy pictures to a folder on my computer using Microsoft Scanner and Camera Wizard** then click OK and follow the next steps to transfer the images to your computer.
2. If your computer is not set to autorun - AutoRun, open a file manager - Windows Explorer or My Computer
3. In the window of the file manager you will see more drives named **Removable** , the number of these drives will depend on the support of the card reader.



The drives of the memory card reader

1. The memory card will be located in one of those drives, which you can identify by looking at the names or clicking on the drives.
2. Images are usually saved in folders, you can use the **Copy / Paste** command or drag the mouse to move pictures from the memory card to the drive on your computer just like when you work with regular drives and folders. often.

Some laptops - Laptops may be equipped with a memory card reader.

You finished reading the article "**How to transfer pictures from digital camera to computer**" edited by the [TipsMake](#) team. We hope this article has provided you with many useful tech tips and tricks. You can search for similar articles on tips and guides. Thank you for reading and for following us regularly.