

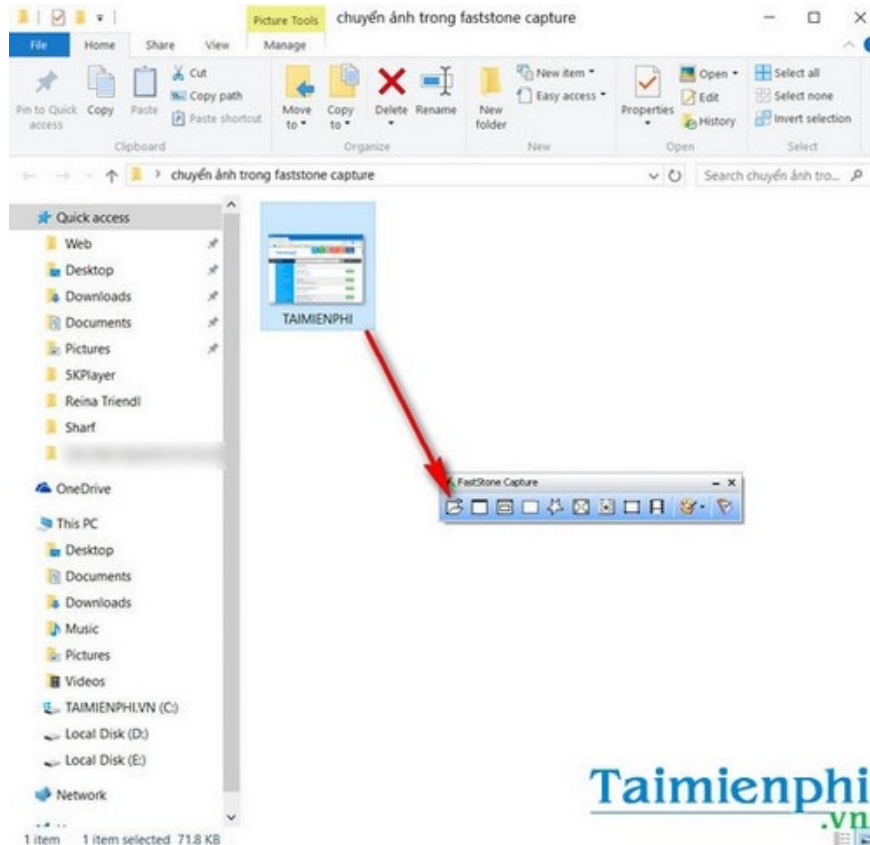
How to transfer images from FastStone Capture to Paint, Word, Excel, PowerPoint, and the web.

FastStone Capture is not just a screen capture tool; it also supports editing and sharing images across multiple platforms. This article guides you on how to transfer images from FastStone Capture to Paint, Word, Excel, PowerPoint, and the web.

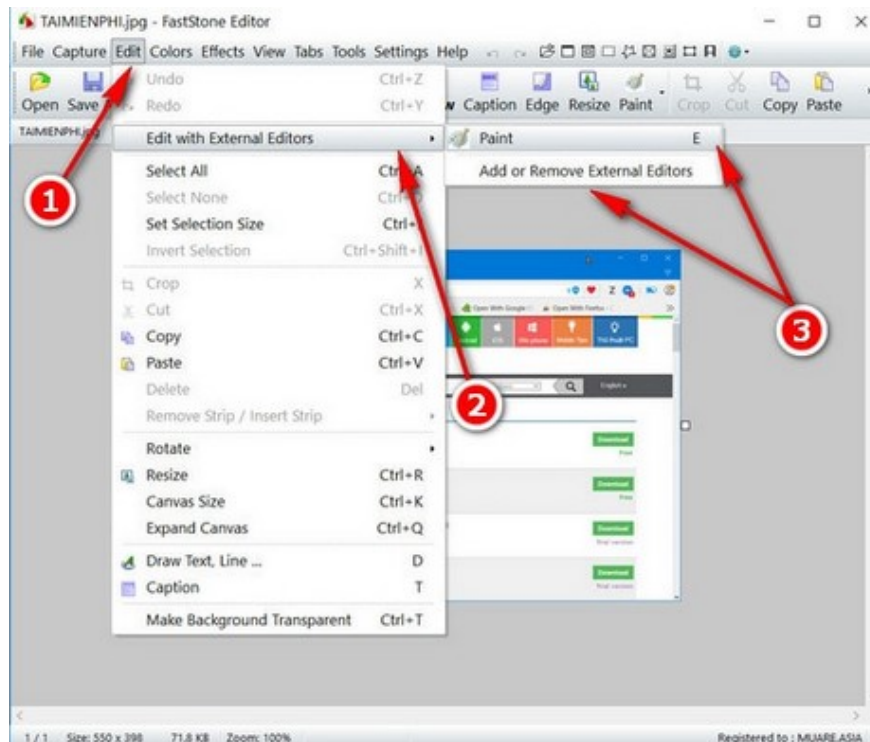
Transferring images from FastStone Capture to Paint, Word, Excel, PowerPoint, or the web makes editing and sharing easier. Below are detailed instructions for each tool.

Instructions on how to do it

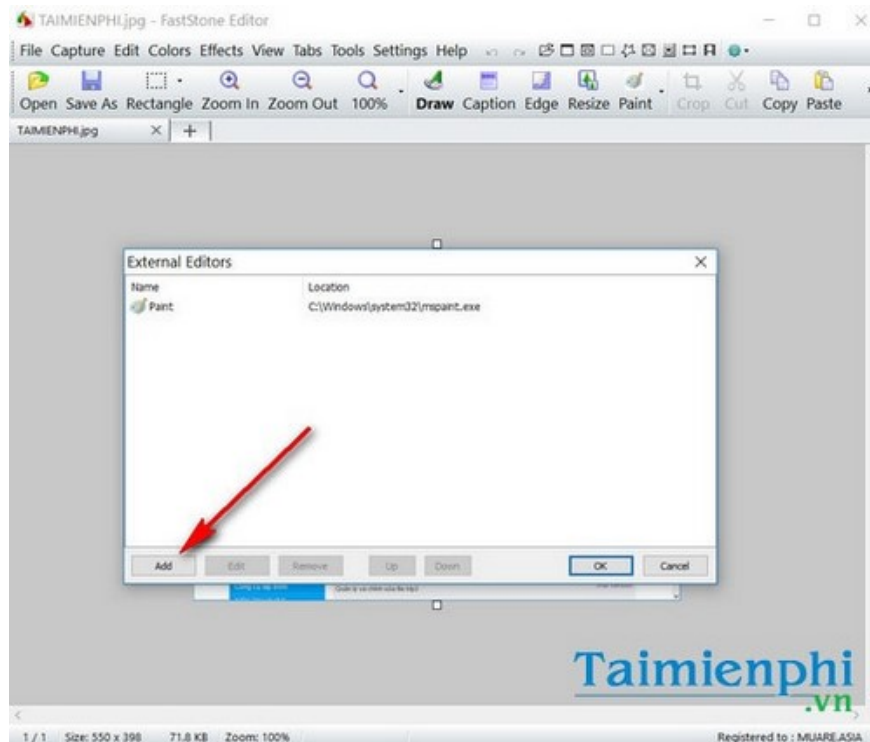
Step 1: Open FastStone Editor by dragging and dropping any image into the **"Open File in Editor"** box on the software's menu bar.



Step 2: Click on **Edit > Edit with External Editor > Select Paint** to open the image in the Paint application and continue editing. Alternatively, to quickly open the image in Paint, simply press the E key.

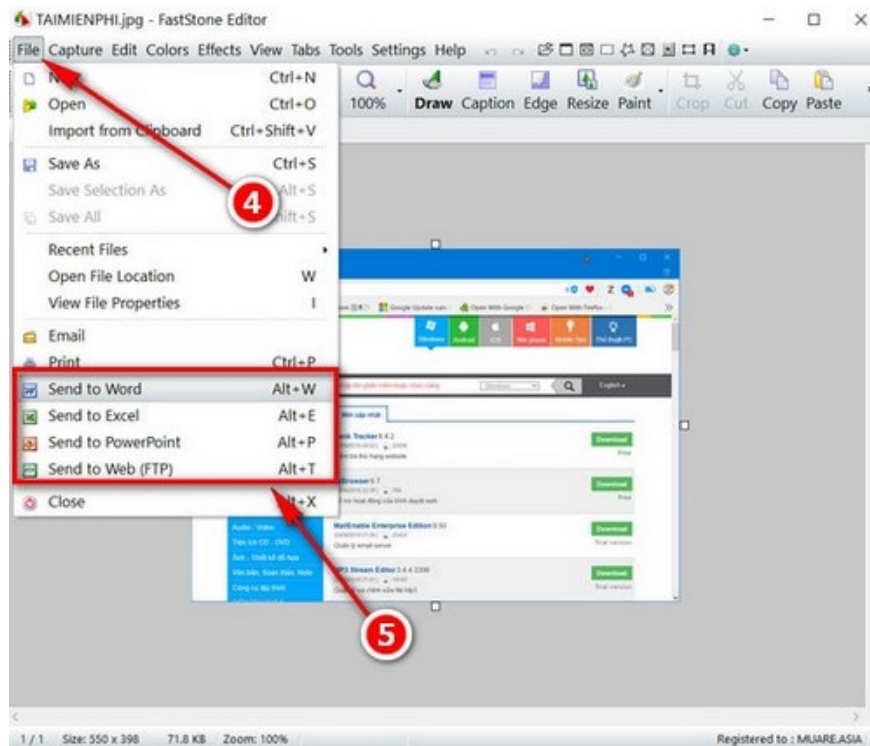


To add other editing tools, click **Add or Remove External Editor**. In the **External Editors** section, click **Add** and then navigate to the .exe file of another image editing application on your computer.

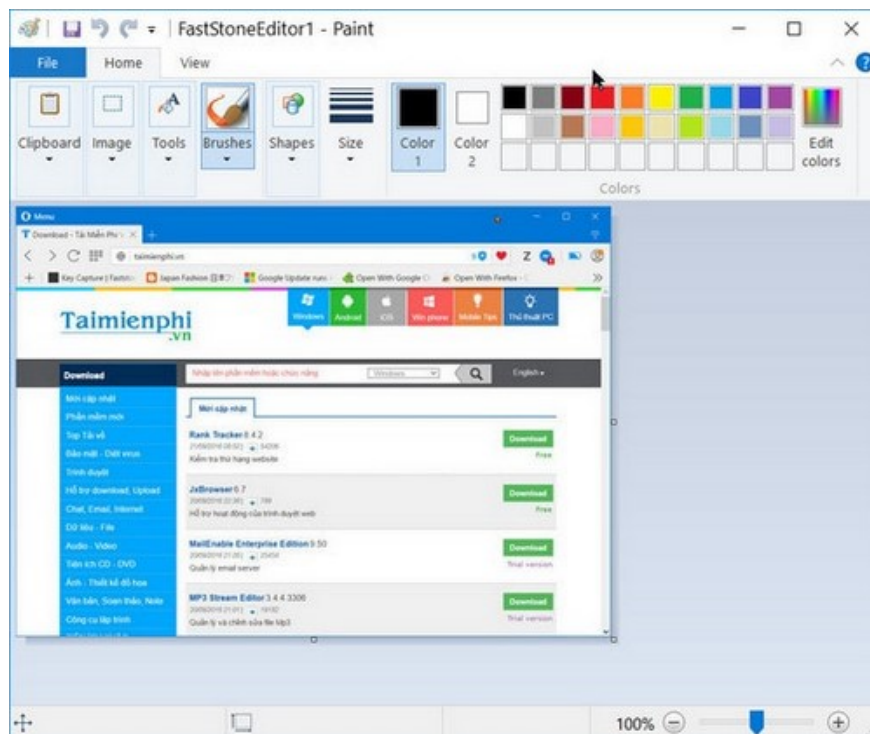


Step 3: To transfer the image to other applications such as Word, Excel, PowerPoint, or the web on your computer, click the File menu.

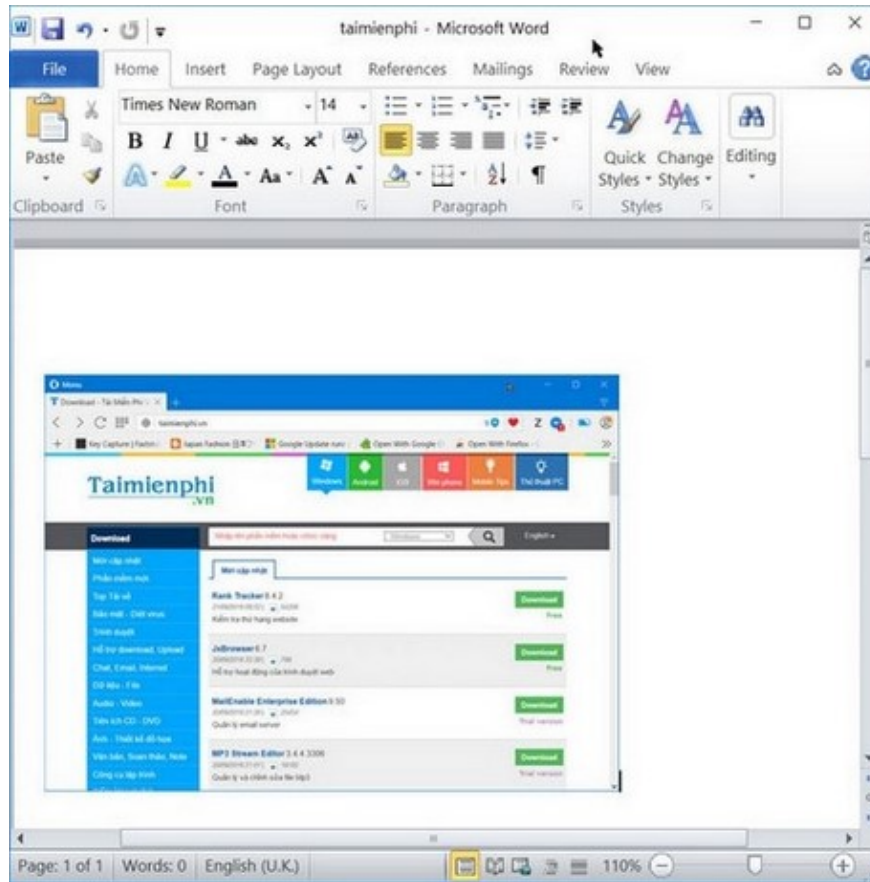
In the **File** menu , you'll find four options at the bottom: **Send to Word** (Alt+W), **Send to Excel** (Alt+E), **Send to PowerPoint** (Alt+P), and **Send to web – FTP** (Alt+T).



The results after transferring images to Microsoft Office suite software and web applications.

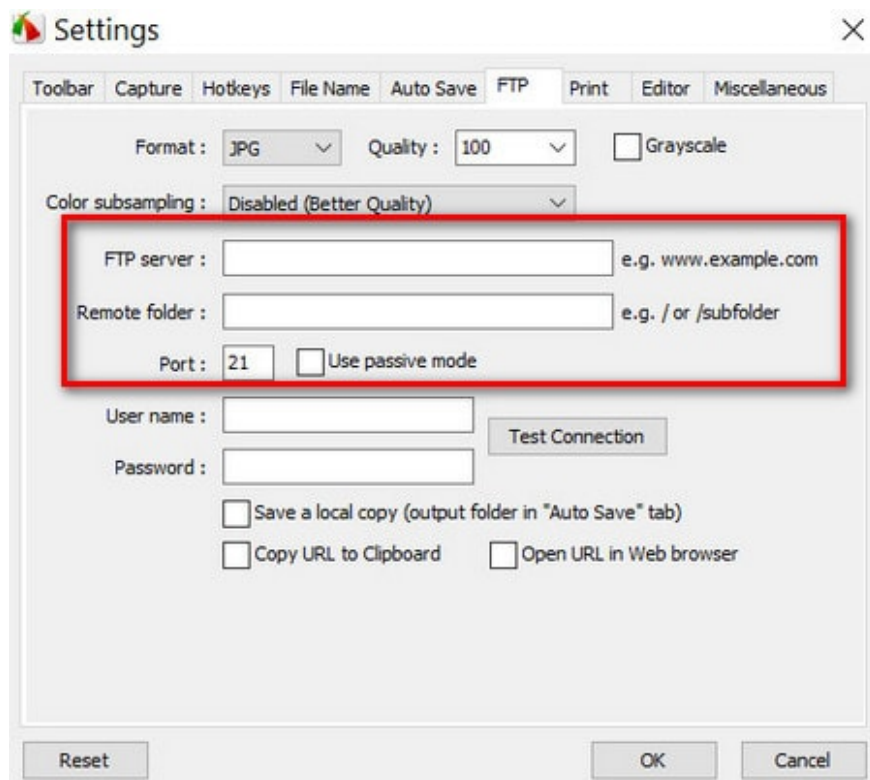


After transferring the image from FastStone Capture to Paint.



After transferring images from FastStone Capture to Word.

To import via the web, you need to access FastStone Capture's Settings and configure the FTP Server in the FTP tab of FastStone Capture Settings.



FastStone Capture helps you quickly capture screenshots, edit them, and send them to Paint, Word, Excel, and PowerPoint without complicated steps. Using the Send to Office feature, images will be inserted directly into your document for editing, optimizing your workflow. If you need to upload images to the web, simply set up an FTP server in the settings, saving time and improving efficiency when working with images.

You finished reading the article "**How to transfer images from FastStone Capture to Paint, Word, Excel, PowerPoint, and the web.**" edited by the [TipsMake](#) team. We hope this article has provided you with many useful tech tips and tricks. You can search for similar articles on tips and guides. Thank you for reading and for following us regularly.