

How to transfer free space from one partition to another in Windows 10

Adding free space from one partition to another is the best way to make full use of hard drive capacity. Excess space in the large partition will not be wasted and the problem of lack of memory in the smaller drive is also solved.

You install the operating system, system programs, applications, and personal data on hard drive partitions. If there is not enough space or memory for the system drive, you cannot install new applications on this partition. Existing applications on C drive may also not work well. Worse, system performance may be affected.

Likewise, if there is not enough space on a data drive, such as partition D, E, F, you cannot store new data to this partition. In addition, you cannot create new documents or files from this partition.

In case, the computer's hard drive partition was not partitioned properly when you bought it. For example, initially, the system drive is partitioned with 60GB. After a year of using the PC, it turned red and gave a warning about low disk space.

Adding free space from one drive to another is the best way to take full advantage of hard drive capacity. Excess space in the large partition will not be wasted and the problem of lack of memory in the smaller drive is also solved. So why don't you do this?

How to transfer space from one drive to another in Windows 10/8/7

Technically, there are several solutions to fix this problem, since the theory is that you will increase the space of one drive by reducing the capacity of another drive. To change an unreasonable partition layout, you can resize the partition using Diskpart, a built-in Windows tool. However, this method is like a detour, because whether you increase or decrease the partition size, the unallocated space will not be the location you want.

```

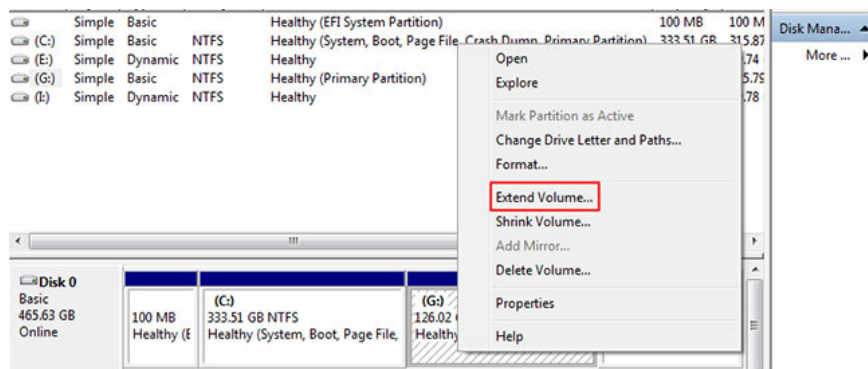
C:\Windows\system32\diskpart.exe
Microsoft DiskPart version 6.1.7601
Copyright (C) 1999-2008 Microsoft Corporation.
On computer: AOMEI-PC
DISKPART> list volume

Volume ### Ltr Label Fs Type Size Status Info
-----
Volume 0 D DUD-ROM 0 B No Media
Volume 1 C NTFS Partition 270 GB Healthy Boot
Volume 2 G NTFS Partition 75 GB Healthy
Volume 3 FAT32 Partition 100 MB Healthy System
Volume 4 F New Volume NTFS Partition 79 GB Healthy
Volume 5 E NTFS Partition 31 GB Healthy

DISKPART> select volume 2
Volume 2 is the selected volume.
DISKPART> extend size=10240
DiskPart successfully extended the volume.
DISKPART> exit

```

Disk Management is also a great tool for managing hard drives and its partitions. Disk Management has a graphical user interface suitable for users with limited computer knowledge. If there is unallocated space adjacent to the partition you want to increase, simply right-click on it and select **Extend Volume**. If not, you can delete the contiguous partition to make it unallocated, then repeat the steps above. Remember to back up files before formatting or deleting.



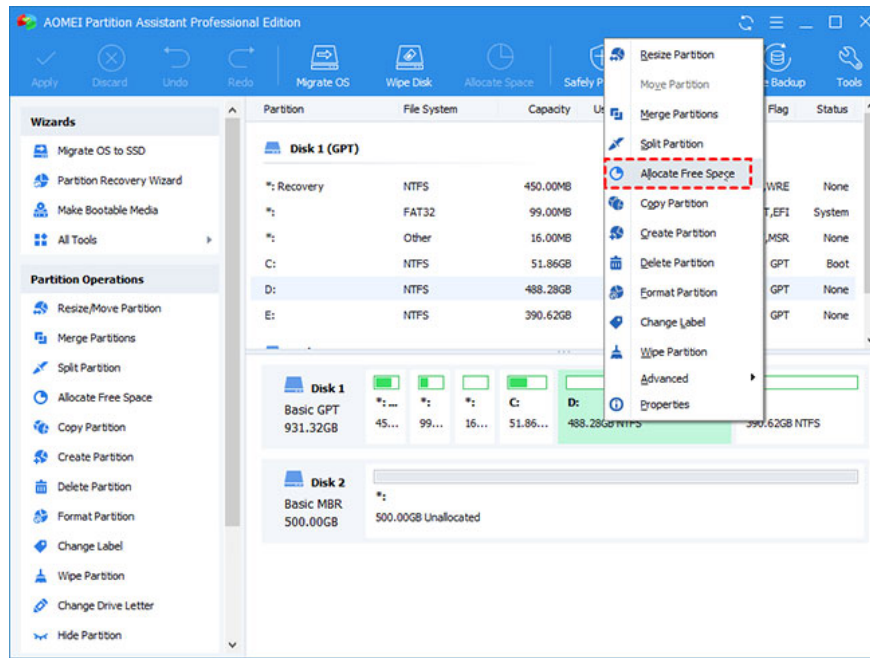
There is also the MiniTool Partition Wizard tool (refer to the article: How to move or resize Windows hard drive partition for more details).

Although Windows offers great tools, some users still wonder if there is a way to allocate free space from one partition to another without formatting the hard drive or any partition. Which one?

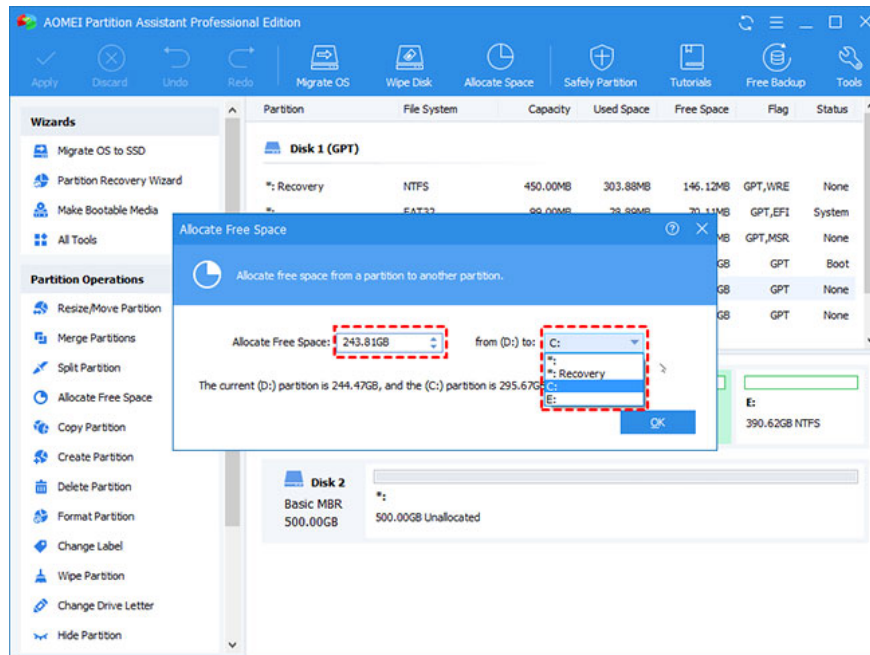
Luckily, the answer is yes. AOMEI Partition Assistant Professional provides a feature called **Allocate Free Space**, which can help directly transfer free space from one drive to another, such as moving space from D drive to C drive in Windows PC. To perform this task in Windows Server, you can switch to Server edition.

How to transfer space from D drive to C drive Windows 10 through a professional manager

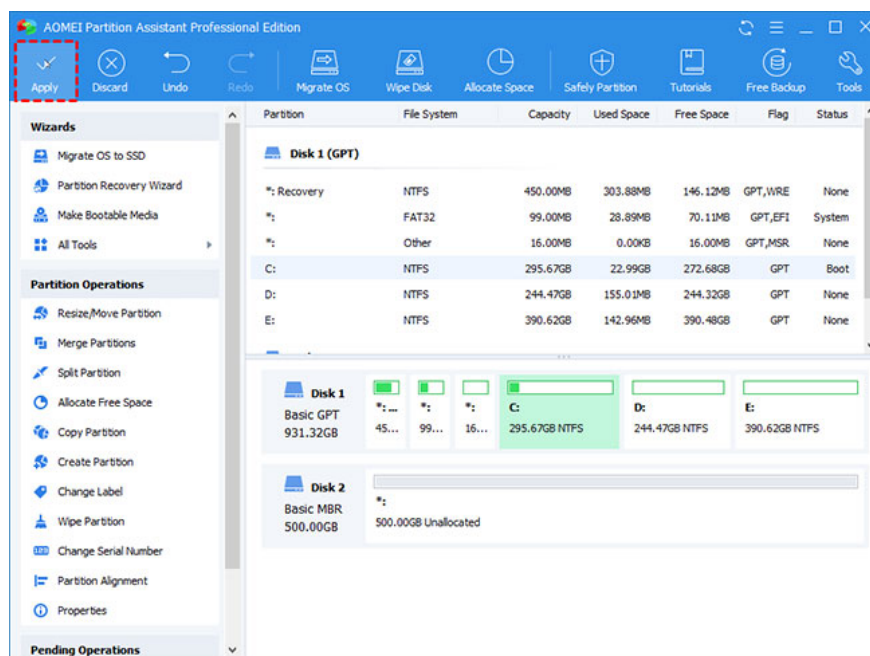
1. Install and launch AOMEI Partition Assistant on the computer. Right-click on the partition you want to allocate (partition D has free space) and select **Allocate Free Space**.



2. In the pop-up window, you are given the option to specify the space size and target partition. Select drive C from the given list.



3. This is a virtual result. Click **Apply** > **Proceed** to make it happen.



Note :

- Because it is related to the system drive, a reboot is required.
- This process applies to different partitions on the same physical hard drive. Drives on different hard drives cannot be done this way.
- This version also supports command line operations, so you can resize or move partitions, etc. from Command Prompt.

It's easy and fast! In three steps, free space is magically moved from the larger drive to the smaller drive. AOMEI Partition Assistant Professional is the advanced version and it has a Standard version with less functions. With this basic tool, you can also transfer space from one drive to another to redistribute space for free.

Step 1: Right-click on the partition with excess space and select **Resize Partition** to create unallocated space on the hard drive. The location of the unallocated space does not matter.

Step 2: Click **Apply**.

Step 3: Right-click on the partition you want to increase capacity and select **Merge Partitions**. In the pop-up window, you are allowed to check both this partition and the unallocated space.

Step 4: Click **Apply** to execute the pending operations.

You finished reading the article "**How to transfer free space from one partition to another in Windows 10**" edited by the [TipsMake](#) team. We hope this article has provided you with many useful tech tips and tricks. You can search for similar articles on tips and guides. Thank you for reading and for following us regularly.