

How to transfer free space from one drive to another in Windows 10

Adding free space from drive to drive is the best way to make full use of hard drive space. Excess space in large partition will not be wasted and the problem of lack of memory in smaller drive is also solved.

You install operating systems, system programs, applications and personal data on a hard drive partition. If there is not enough space or memory available for the system drive, you cannot install new applications on this partition. Apps that are currently on the C drive may also not work well. Worse, running system performance may be affected.

Likewise, if there is not enough space on the data drive, such as partitions D, E, F, you cannot store new data in this partition. Also, you cannot create new documents or files from this partition.

In case, the computer's hard drive partition was not properly partitioned when you bought it. For example, initially, the system drive is partitioned with 60GB. After a year of using the PC, it turns red and gives a warning about low drive capacity.

Adding free space from drive to drive is the best way to make full use of hard drive space. Excess space in large partition will not be wasted and the problem of lack of memory in smaller drive is also solved. So why don't you do this?

How to transfer space from one drive to another in Windows 10/8/7

Technically, there are several solutions to this problem, since the theory is that you will increase the space of one drive by reducing the capacity of the other. To change the unreasonable partition layout, you can resize partitions using Diskpart, Windows' built-in tool. However, this is like a detour, because whether you increase or decrease the size of the partition, the unallocated space will not be the location you want.

```

C:\Windows\system32\diskpart.exe
Microsoft DiskPart version 6.1.7601
Copyright (C) 1999-2008 Microsoft Corporation.
On computer: AOMEI-PC

DISKPART> list volume

Volume ###  Ltr  Label          Fs          Type          Size         Status       Info
-----
Volume 0          D          No Media      DUD-ROM     0 B          No Media
Volume 1          C          Boot          NTFS        Partition    270 GB       Healthy      Boot
Volume 2          G          System       NTFS        Partition    75 GB        Healthy
Volume 3          F          New Volume   FAT32       Partition    100 MB       Healthy      System
Volume 4          E                       NTFS        Partition    79 GB        Healthy
Volume 5          E                       NTFS        Partition    31 GB        Healthy

DISKPART> select volume 2
Volume 2 is the selected volume.

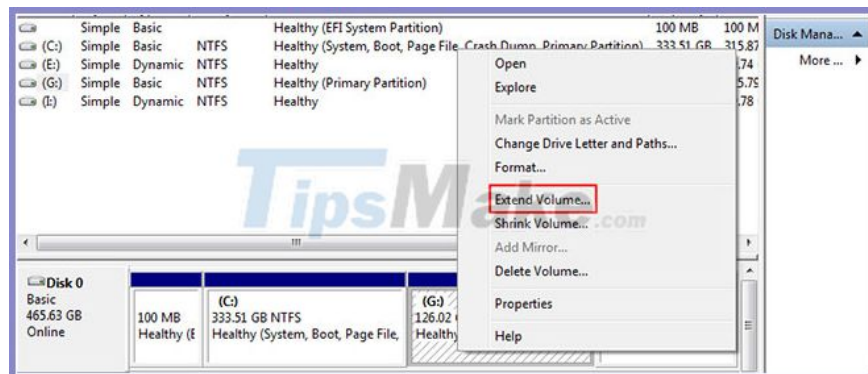
DISKPART> extend size=10240
DiskPart successfully extended the volume.

DISKPART> exit

```

Disk Management is also a great tool for managing the hard drive and its partitions. Disk Management has a graphical user interface suitable for users with limited computer knowledge.

If there is unallocated space adjacent to the partition you want to increase, simply right-click on that partition and select **Extend Volume**. If not, you can delete the adjacent partition to make it unallocated, then repeat the steps above. Remember to back up files before formatting or deleting.



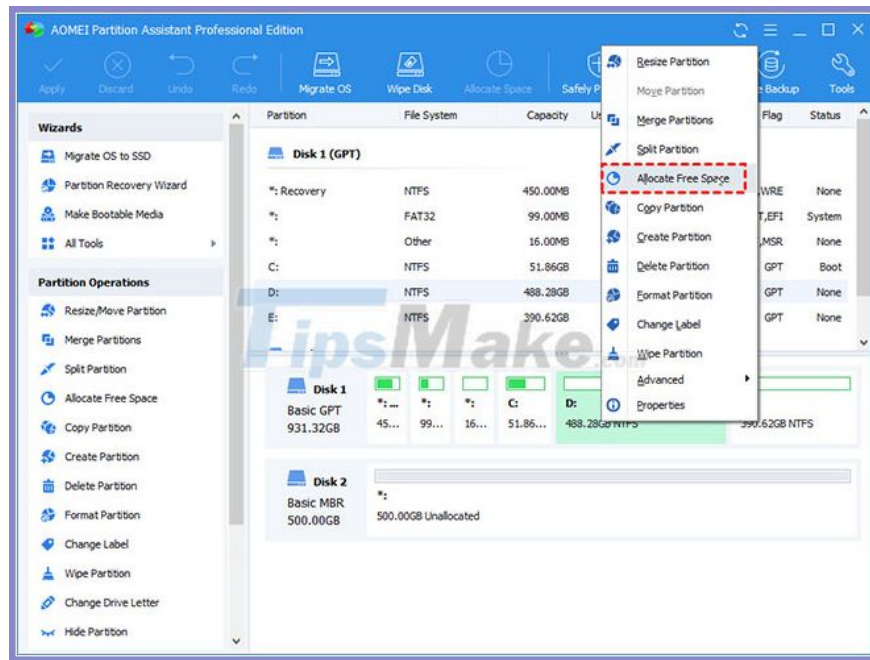
There is also MiniTool Partition Wizard tool.

Although Windows offers great tools, some users still wonder if there is a way to allow free space allocation from one partition to another without having to format the hard drive or any partitions. do not.

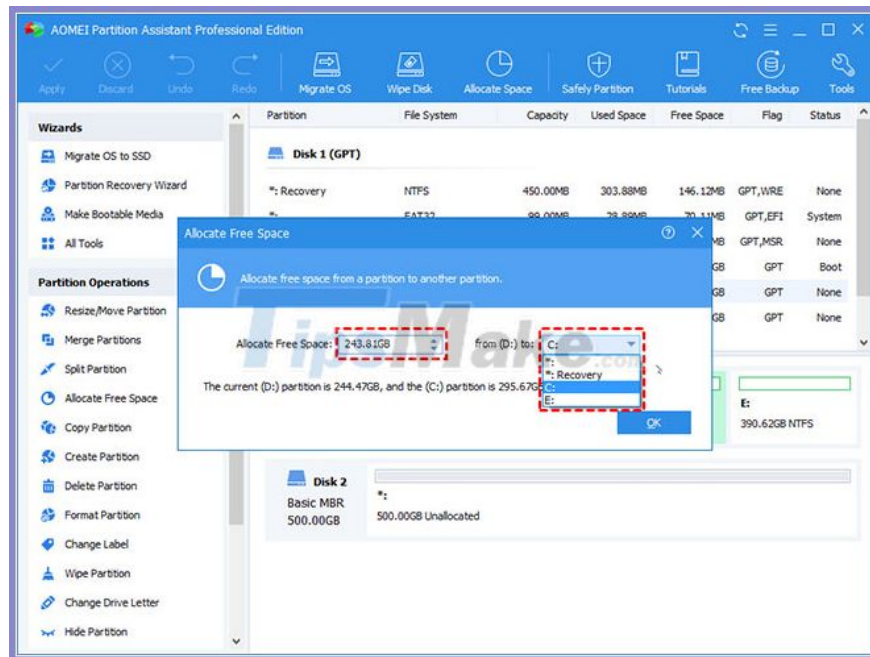
Fortunately, the answer is yes. AOMEI Partition Assistant Professional provides a feature called **Allocate Free Space**, which can help transfer free space from one drive to another, such as moving space from drive D to drive C in Windows PC. To do this task in Windows Server, you can switch to the Server instance.

How to transfer space from drive D to drive C Windows 10 through a professional manager

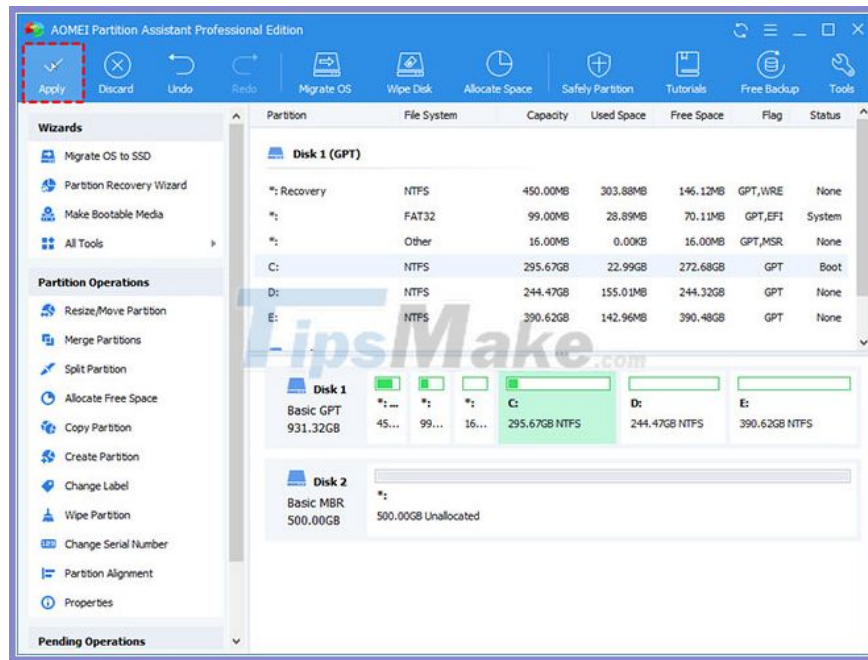
1. Install and launch AOMEI Partition Assistant on the computer. Right click on the partition you want to allocate (partition D has free space) and select **Allocate Free Space** .



2. In the pop-up window, you are given the option to specify the space size and target partition. Select drive C from the given list.



3. This is a virtual result. Click **Apply**> **Proceed** to make it a reality.



Note :

Since it is related to the system drive, a reboot is required.

This process applies to different partitions on the same physical hard drive. Drives on different hard drives cannot work this way.

- This version also supports command line operations, so you can resize or move partitions etc. from the Command Prompt.

It's easy and fast! In three steps, free space is magically moved from a large drive to a smaller one. AOMEI Partition Assistant Professional is an enhanced version and it has a Standard version with less functionality. With this basic tool, you can also transfer storage from one drive to another to redistribute space for free.

Step 1: Right-click on the partition with redundant space and select **Resize Partition** to create unallocated space on the hard drive. The position of the unallocated space does not matter.

Step 2: Click **Apply**.

Step 3: Right-click on the partition you want to increase capacity and choose **Merge Partitions**. In the pop-up window, you are allowed to check both the partition and the unallocated space.

Step 4: Click **Apply** to perform pending operations.

You finished reading the article "**How to transfer free space from one drive to another in Windows 10**" edited by the [TipsMake](#) team. We hope this article has provided you with many useful tech tips and tricks. You can search for similar articles on tips and guides. Thank you for reading and for following us regularly.