

How to time off the computer very quickly and easily by the command CMD, no need to install additional software

How to turn off the computer very quickly and easily by the CMD command, no need to install additional software, suitable for all versions of Windows. To schedule to turn off the computer, normally you will look to 3rd party software without knowing that we can completely schedule

Turning off the computer time is essential for those who do not have time to sit next to the computer. For example, when the computer is processing a certain job but due to another job, we can not wait for the computer to finish processing to turn off the computer, then the function to turn off the computer will take effect. highest effect. To schedule a computer shutdown, normally you will look to 3rd party software without knowing that we can fully schedule a computer shutdown with a simple CMD command and do not need to install any additional parts Any other software that consumes memory. The following article of Thuthuatphanmem.vn will guide you how to schedule a computer shutdown with CMD command, applicable to all operating systems versions. Invite you to refer.

With the timer by the following command you can perform on: Windows XP, Windows Vista, Windows 7, 8, 8.1 and Windows 10.

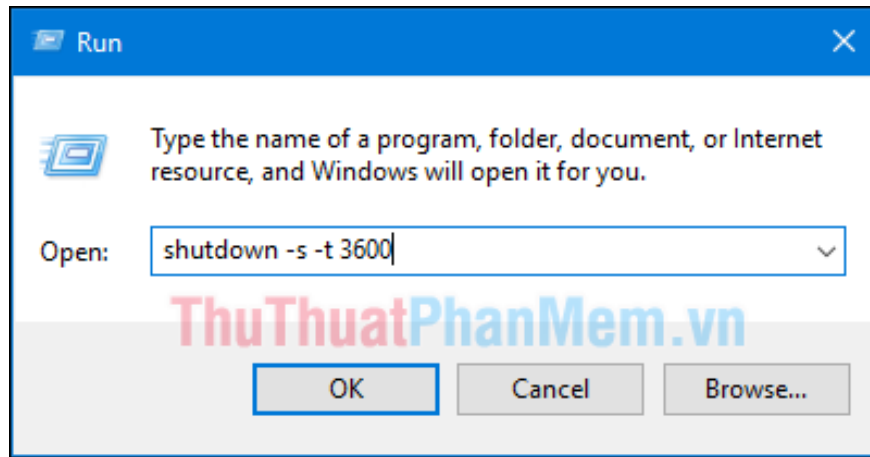
The steps are as follows:

First, press Windows + R to open the Run dialog box. After the Run dialog box appears, enter the following command:

shutdown -s -t 3600

Inside:

1. **shutdown** : Turn off the computer
2. **s** : shorthand for shutdown
3. **t** : stands for time
4. **3600** : The shutdown timer time is in seconds (3600 seconds = 1 hour).



Depending on how much time you want to schedule, convert hours or minutes to seconds to enter the command. For example, some common time frames have been changed to seconds:

1. 5 minutes: shutdown -s -t 300
2. 10 minutes: shutdown -s -t 600
3. 15 minutes: shutdown -s -t 900
4. 30 minutes: shutdown -s -t 1800
5. 1 hour: shutdown -s -t 3600
6. 2 hours: shutdown -s -t 7200
7. 3 hours: shutdown -s -t 10800
8. 4 hours: shutdown -s -t 14400
9. 5 hours: shutdown -s -t 18000
10. 12 hours: shutdown -s -t 43200
11. 24 hours: shutdown -s -t 86400

After entering the command, click OK and a message will appear, as shown below is the message on windows 10:



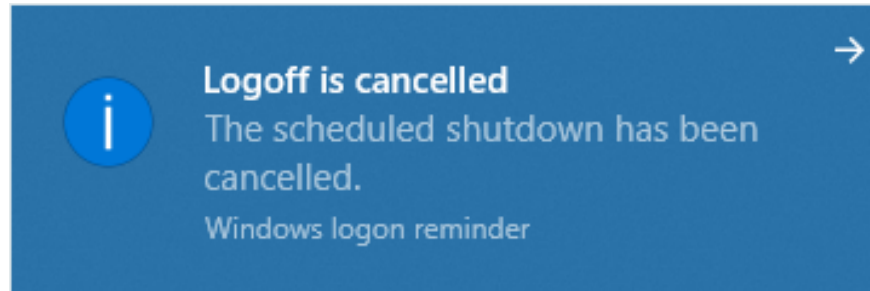
In addition to the shutdown timer function, you can also schedule the Restart of the computer by using the following command:

shutdown -r -t 3600

In case you want to cancel the shutdown timer, enter the command:

shutdown -a

When the message Logoff is canceled as shown below, the timer has been successfully canceled.



Above Thuthuatphanmem.vn has instructed you to schedule a shutdown by a simple command in windows. Hope the article will be helpful to you. Good luck!

You finished reading the article "**How to time off the computer very quickly and easily by the command CMD, no need to install additional software**" edited by the [TipsMake](#) team. We hope this article has provided you with many useful tech tips and tricks. You can search for similar articles on tips and guides. Thank you for reading and for following us regularly.