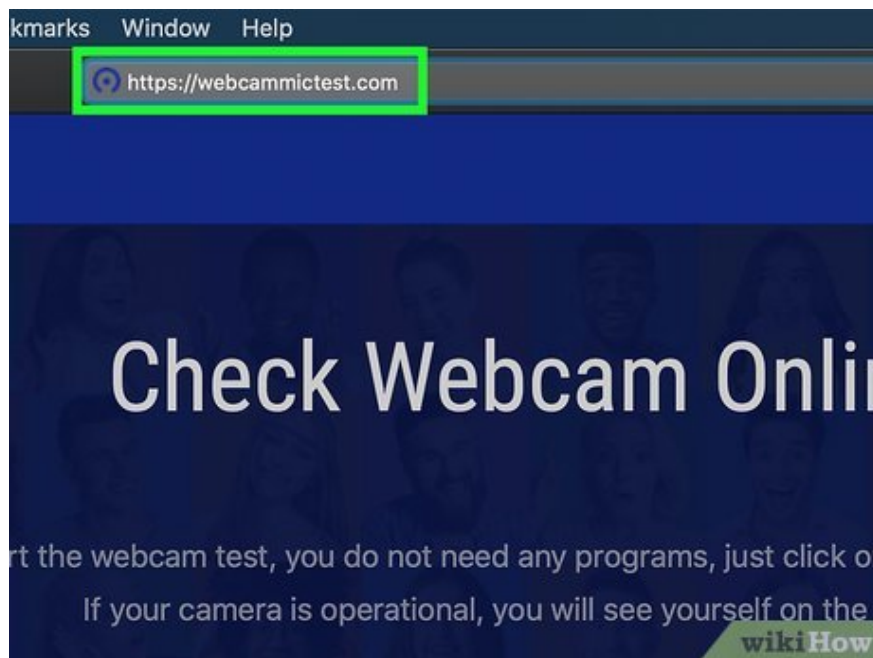


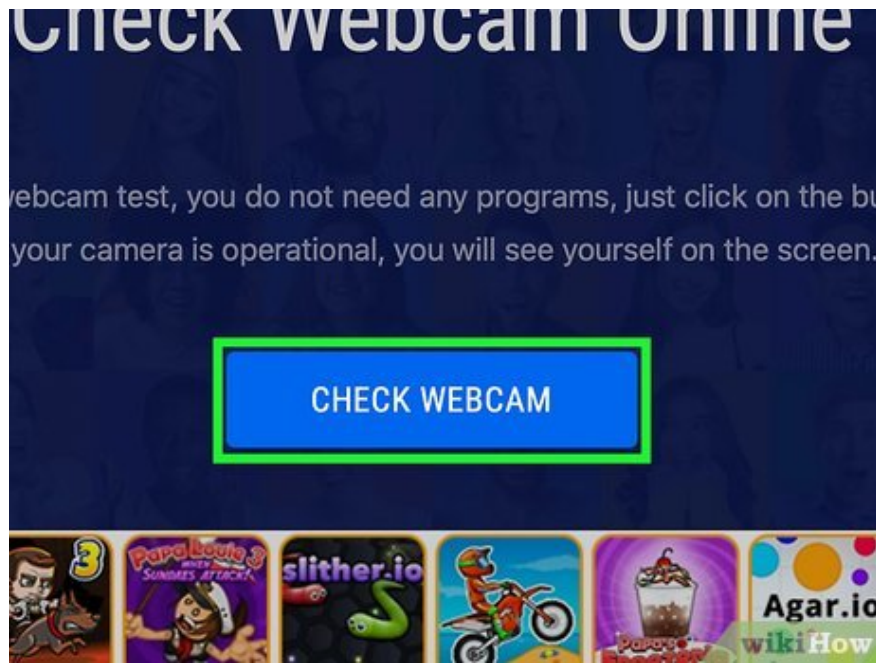
# How to Test Webcam on PC or Mac

Today's TipsMake will show you how to check if the webcam is working on Windows or macOS. Both Windows and MacOS have a built-in camera app that you can use to check the status of your webcam. Additionally, using a website is also an option if you want to test the webcam.

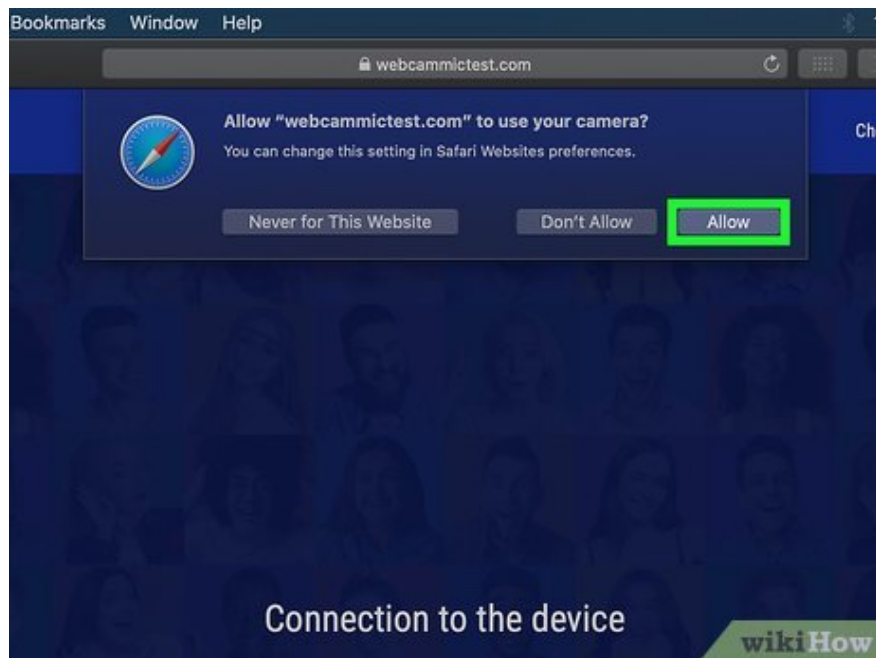
## Use a web browser



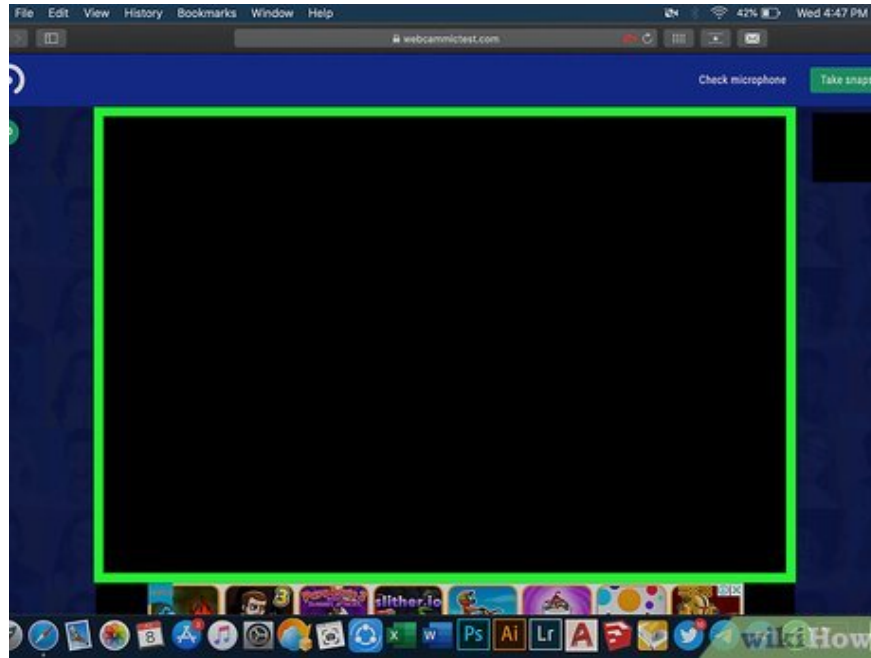
**Visit <https://webcammictest.com/> using a web browser.** You can use any web browser on PC or Mac.



**Click Check Webcam .** This blue button is in the middle of the page.

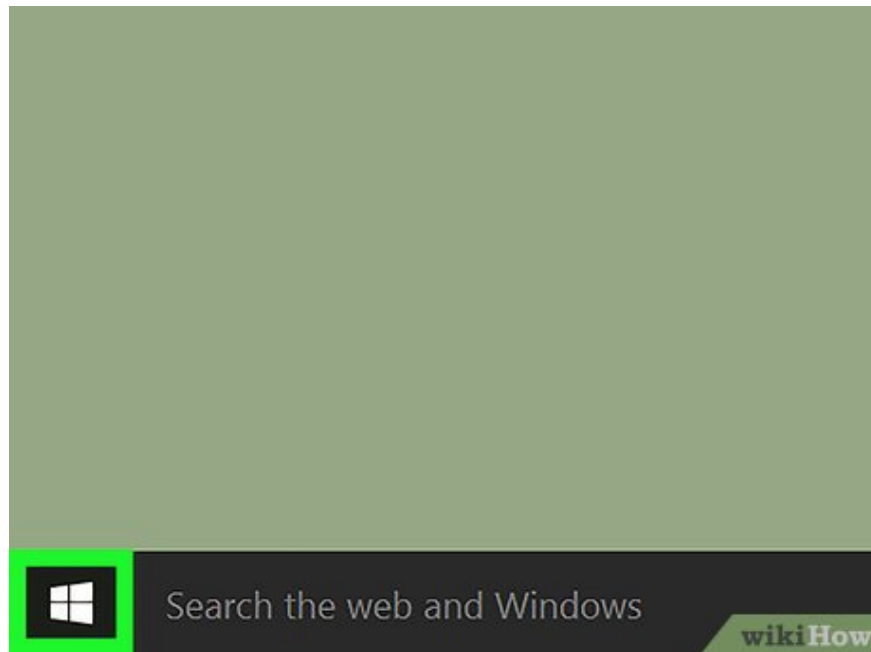


**Click Allow .** The website will be granted webcam access.

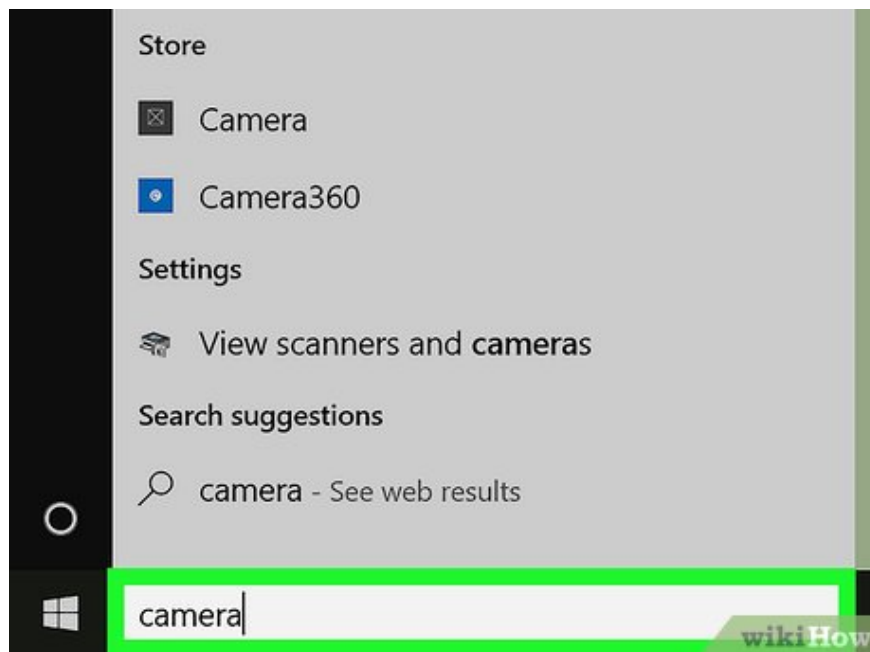


**Check the content on the screen.** If the webcam is working, you will see the image from the camera appear in the middle of the web page.

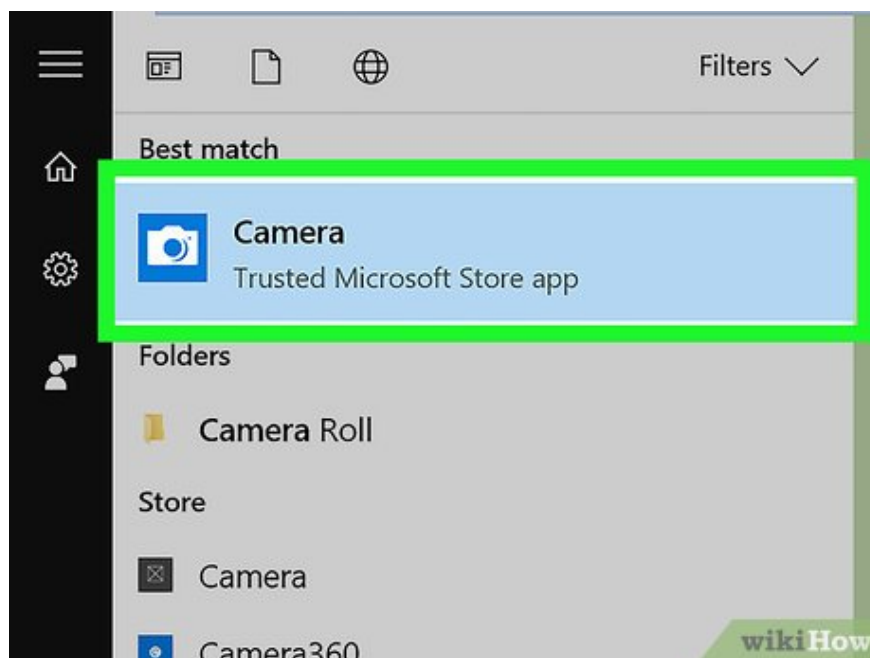
## On Windows



**Click menu .** This menu is usually in the lower left corner of the screen.



Type camera in the search bar in the lower left corner of the screen.



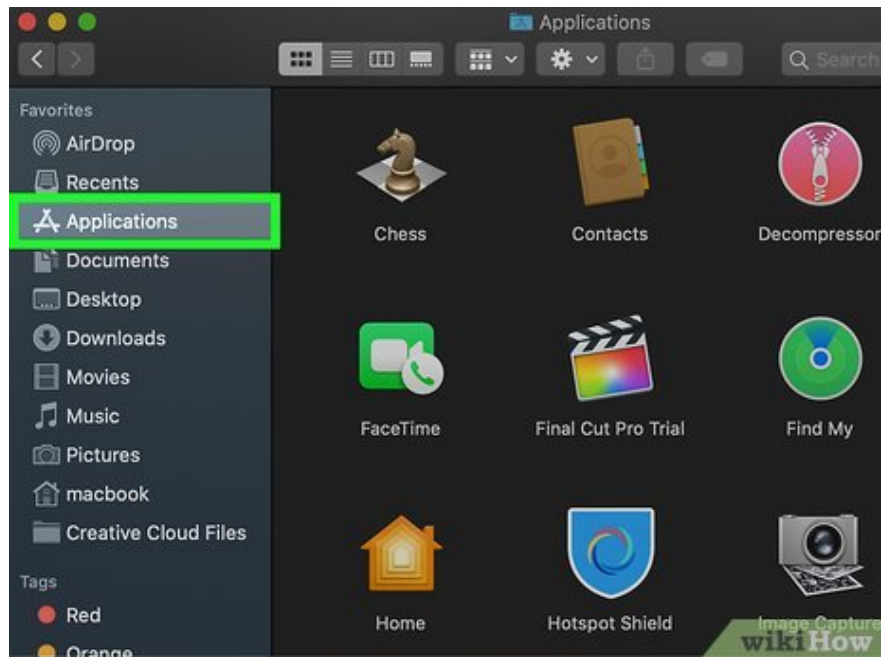
Click Camera . The Camera app will launch and the webcam will automatically open. If the webcam image appears on the screen, the device is working normally.

If this is your first time opening the Camera app, you may need to give the app permission to launch.

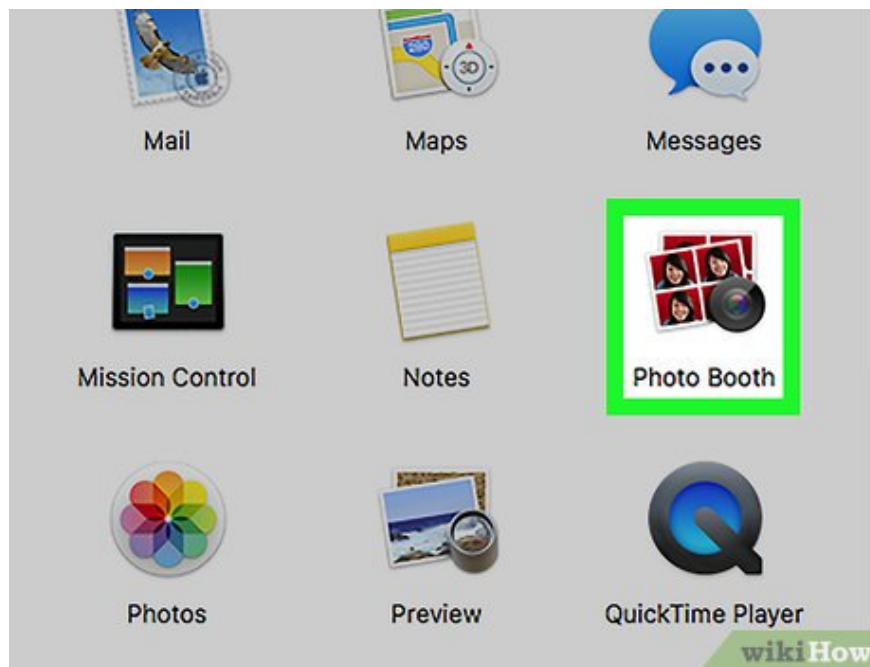
## On MacOS



**Open Finder.** The application has a blue and white smiley face icon, usually located in the Dock at the bottom of the desktop.



**Click Applications .** Options are in the menu bar on the left side of Finder.

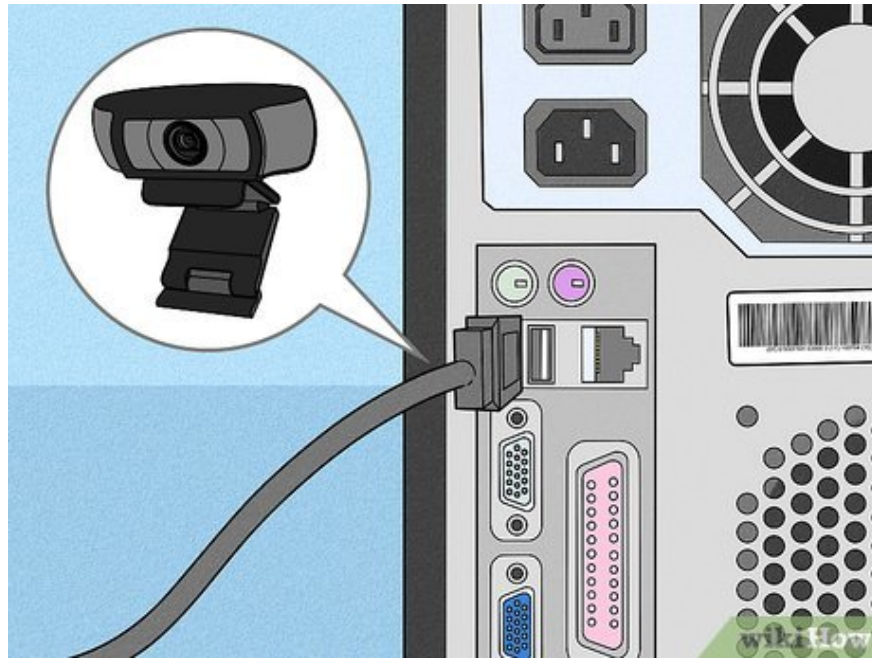


**Double click Photobooth .** Photobooth will automatically open the webcam. If the webcam image appears on the screen, the device is working normally.

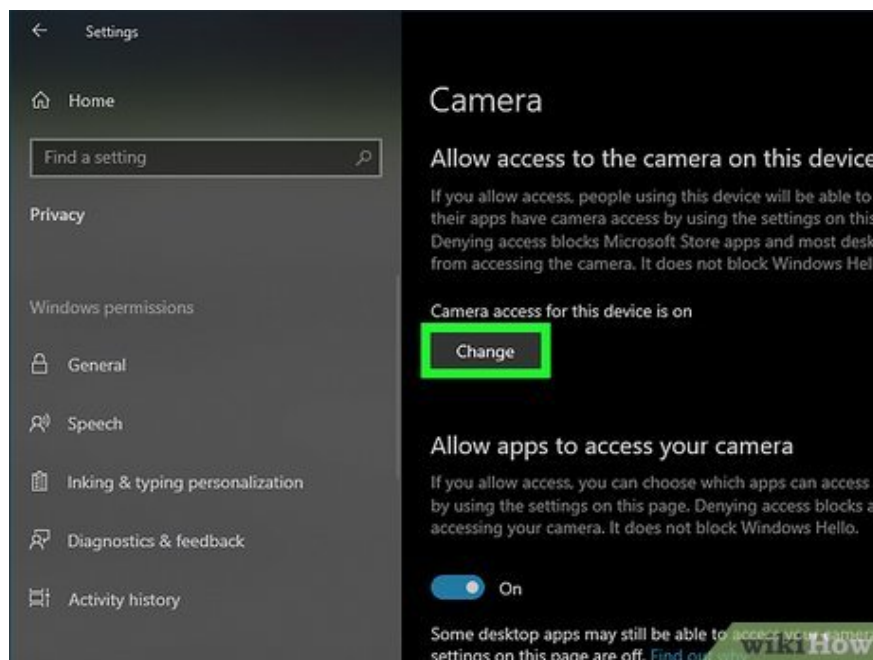
### **Fix webcam problems**



**Check webcam status.** Locate the webcam. The device is usually located at the top and center of the screen. You need to make sure that there are no debris or anything blocking the webcam's eyes. Some laptops have a built-in webcam cover, look to see if the webcam is covered or not. If you use an external webcam, you need to check to see if the connection cable is frayed or worn.



**Check the USB port that the external webcam connects to.** If you use an external webcam, you need to check the USB port the device is connecting to. The webcam's plug needs to be firmly plugged into the USB port. Try unplugging and plugging it back into another USB port to see if the webcam works or not.



**Check to make sure the webcam is turned on (Windows only).** The Windows Settings menu allows us to turn webcams on and off, both regular and for various applications. The following steps will help you check if the webcam is enabled.

Click the **Windows Start** menu .

Click **the Gear/Settings** menu .

Click **Privacy** .

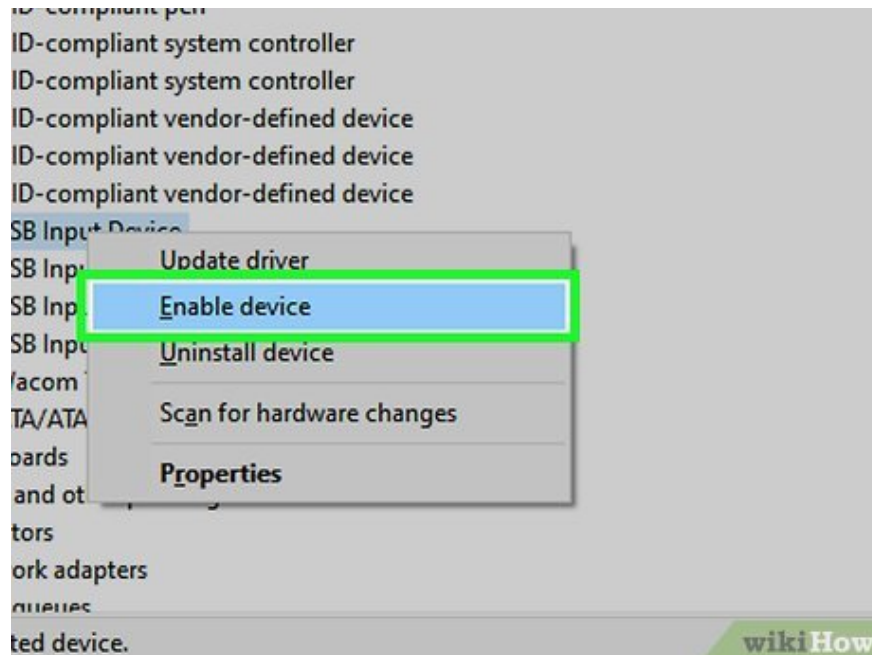
Click **Camera** in the left pane.

Click **Change** . It's below "Camera access for this device is off."

Check to make sure this switch is turned on.

The switch below "Allow apps to access your camera" should also be turned on.

Scroll down and check that the switch for each app you want to access your webcam for is turned on.



**Check if the webcam is enabled in Device Manager (Windows only).** The following steps will help you check in Device Manager whether the webcam is enabled or not:

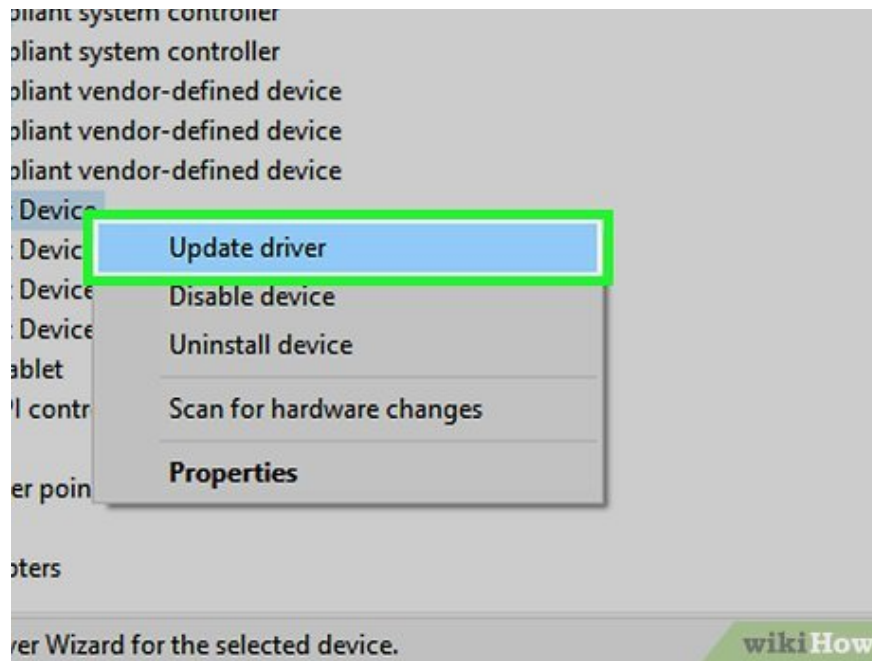
**Right-click the Windows Start** menu .

Click **Device Manager** .

Double-click **Cameras** or Imaging **Devices** .

Right click on the webcam.

Click **Enable Device** .



**Update the camera driver.** You can also check in Device Manager to make sure the camera driver is up to date. Apply the following steps to check if the camera driver is updated:

**Right-click the Windows Start menu .**

Click **Device Manager .**

Double click **Cameras** or **Imaging Devices .**

Right click on the webcam.

Click **Update Drivers .**



**Reset your Mac's system controller (Mac only).** If your Mac's webcam isn't working, you may need to reset your system controller. Follow these steps to reinstall the system controller on Mac:

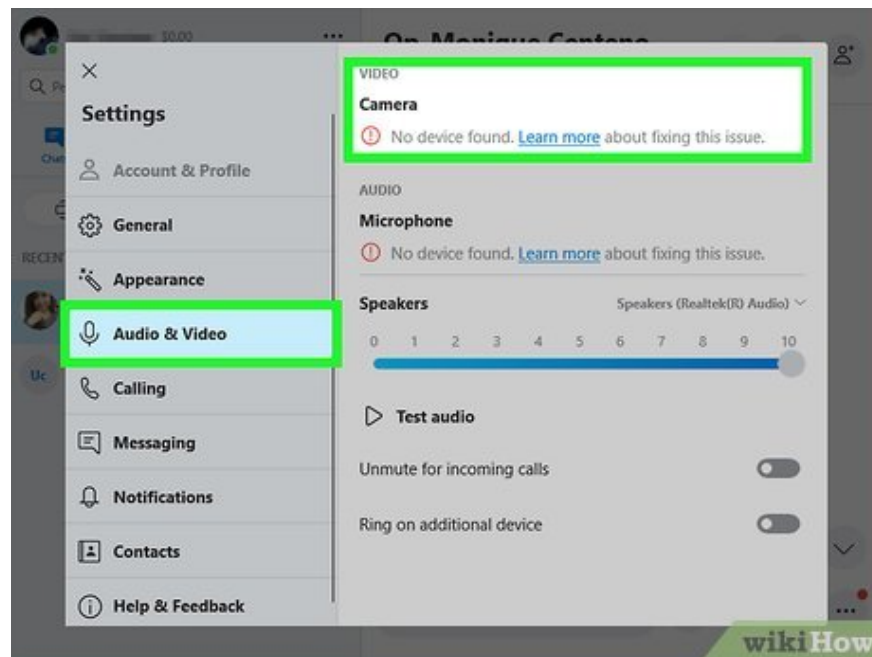
Turn off your Mac.

Hold down Shift (left) + Control + Option for 7 seconds.

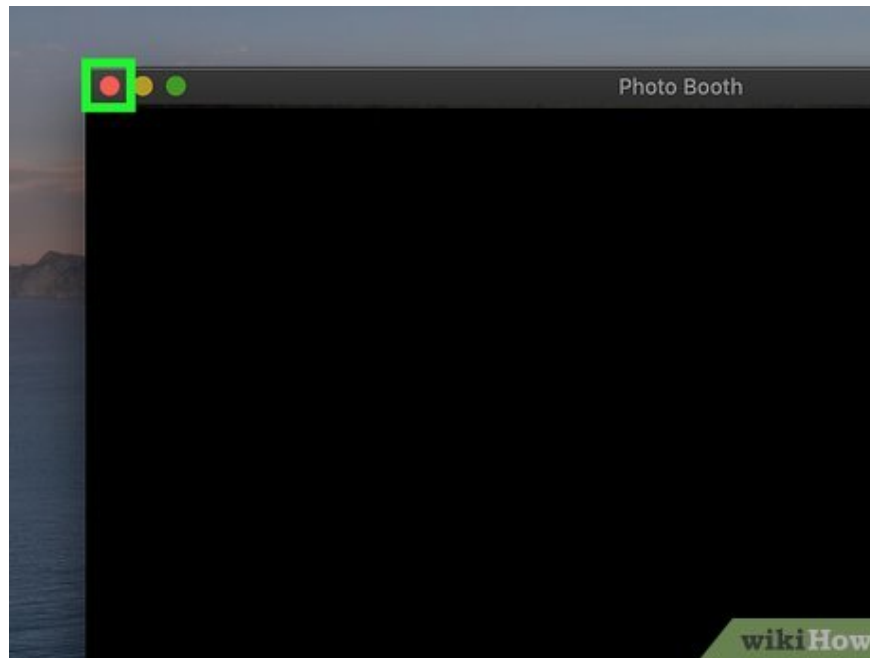
Still don't release your hand, continue to hold the power button for another 7 seconds.

Release all keys and wait a few seconds.

Turn on your Mac.



**Check the webcam settings of the application you want to use.** If the webcam still doesn't work in a particular application, you need to set up a webcam configuration in that application. This is especially necessary if you use multiple webcams. Webcam settings are often located differently depending on the application. In general, you can access webcam settings by opening the "Settings", "Preferences" or "Options" menu, then accessing the "Video" menu.



**Check to make sure other applications are not using the webcam.** If an application is using the webcam, other applications will not be able to access it. You must close all applications that access the webcam before opening a new application that needs to use the camera.



**Replace the webcam.** If the webcam is not blocked, the driver is updated, the device is connected properly but still cannot be used, it is likely that the webcam is broken and you need to replace it. Older webcams may also not be compatible with new applications.

You finished reading the article "**How to Test Webcam on PC or Mac**" edited by the [TipsMake](#) team. We hope this article has provided you with many useful tech tips and tricks. You can search for similar articles on tips and guides. Thank you for reading and for following us regularly.

---

