

How to test the Windows 10 webcam

Checking that the webcam is working properly on a Windows computer is quick and easy. Here are the steps to help you check the camera.

Checking that the webcam is working properly on a Windows computer is quick and easy. Here are the steps to help you check the camera:

Step 1: Make sure you have set up the right webcam connection

The first thing you should do is make sure you have the right webcam connected to your computer:

1. If the computer has a built-in camera, you don't need to do anything.
2. If using a standalone camera, you should connect it to your computer using a cable or via Bluetooth.

After establishing the connection, you should install the latest driver for your webcam.

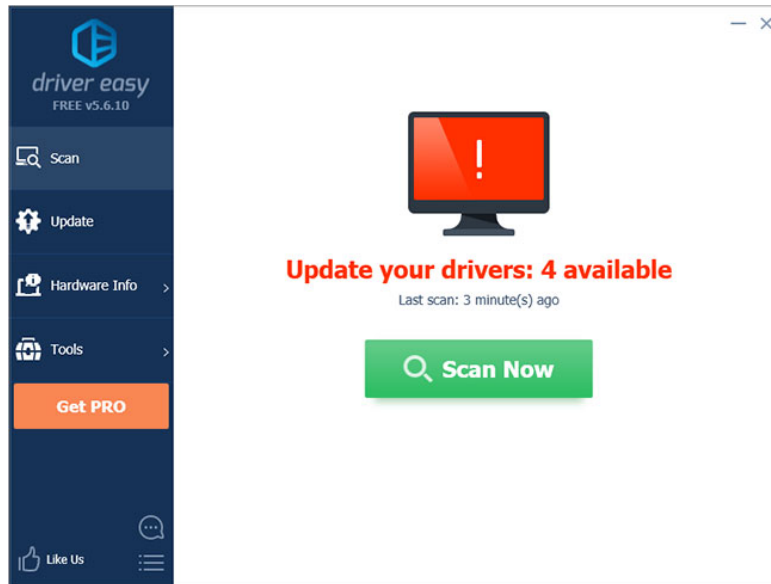
Step 2: Install the latest driver for the webcam

Outdated or incorrect drivers may cause problems with the webcam. You should make sure your webcam driver is up to date.

You can update or install the webcam driver manually. But if you don't have the time, patience or skill, you can automatically do it with **Driver Easy**.

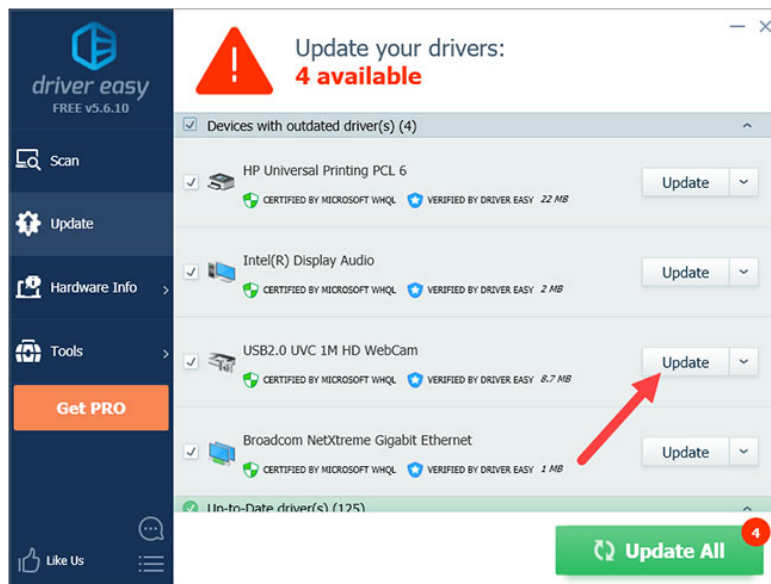
You don't need to know exactly what system your computer is running, risk downloading and installing the wrong driver, or worrying about making an installation error. Driver Easy will handle it all.

- 1) Download and install Driver Easy.
- 2) Run Driver Easy and click the **Scan Now** button . Driver Easy will then scan your computer and detect any problematic drivers.



Run Driver Easy and click the Scan Now button

3) Click the **Update** button next to the device to download the correct version of the driver, then you can install it manually. Or click the **Update All** button at the bottom right to automatically update all drivers. (This requires the Pro version - you'll be prompted to upgrade when you click **Update All**. You get full support and a 30-day money-back guarantee.)



Click the Update button

Step 3: Run the test software

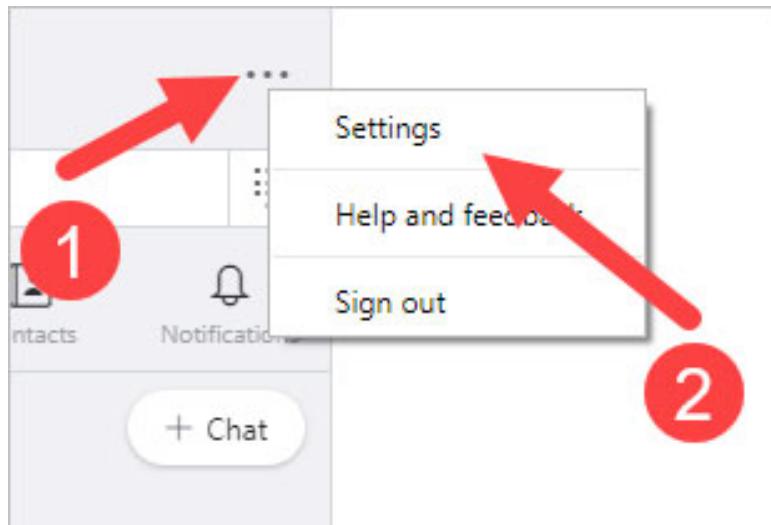
When the camera is ready, start testing how it works. There are two ways you can do this. That is:

1. Check webcam with Skype
2. Check webcam with Camera app (Windows 10 only)

Method 1: Check webcam with Skype

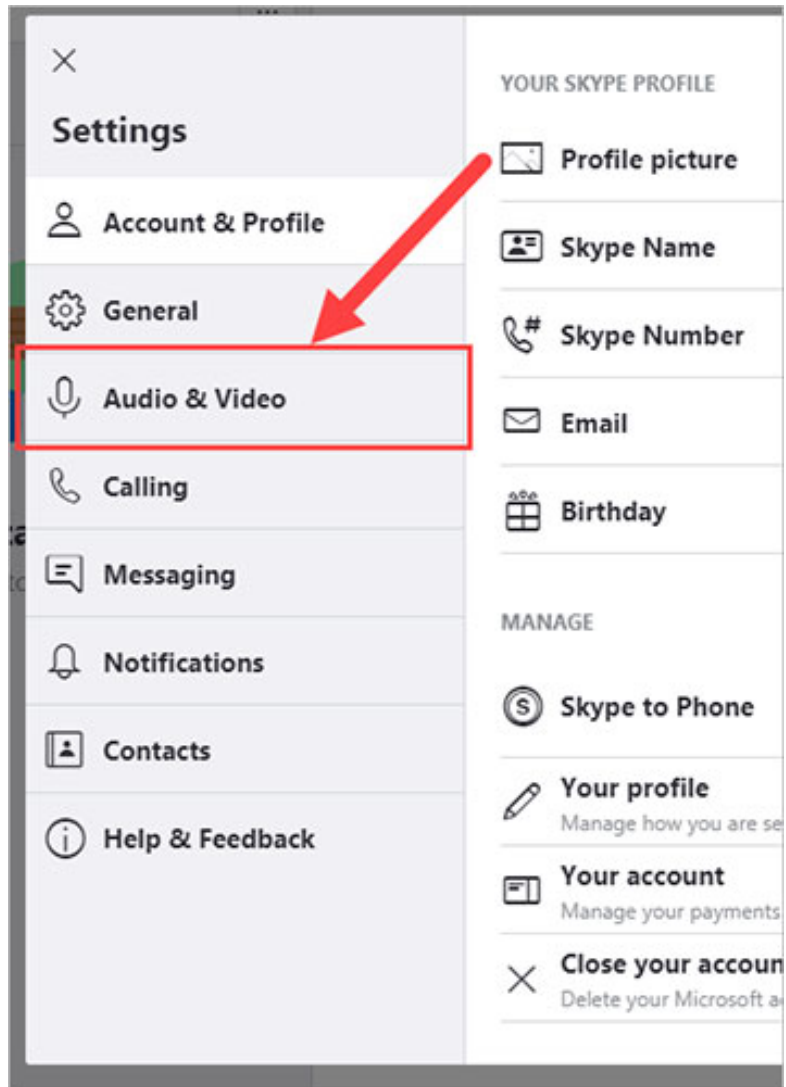
You can use Skype to check webcam as follows:

- 1) Run the **Skype** application on your computer and log in to your account.
- 2) Click the menu icon, then click **Settings**.



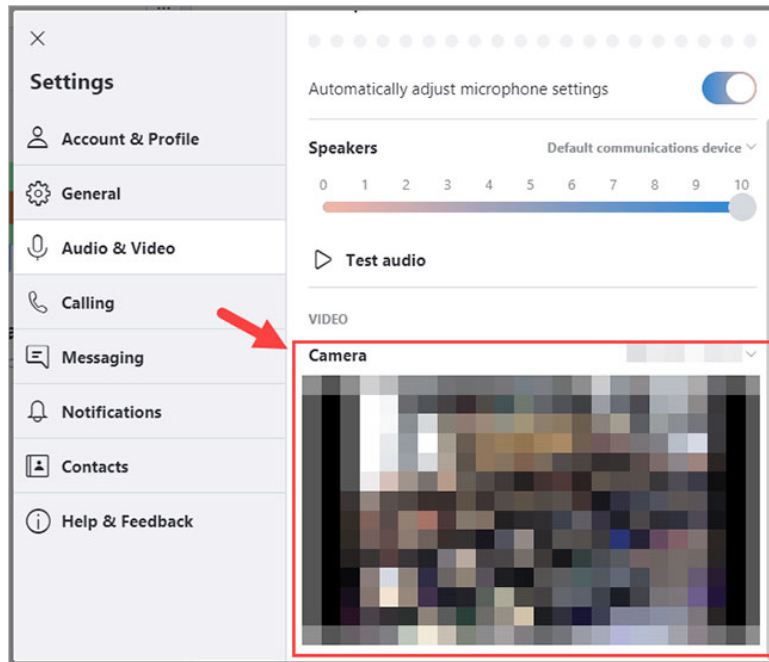
Click on Settings

- 3) Click **Audio & Video** .



Click on Audio & Video

4) Check the camera preview in the **VIDEO** section .



Check the camera preview in the VIDEO section

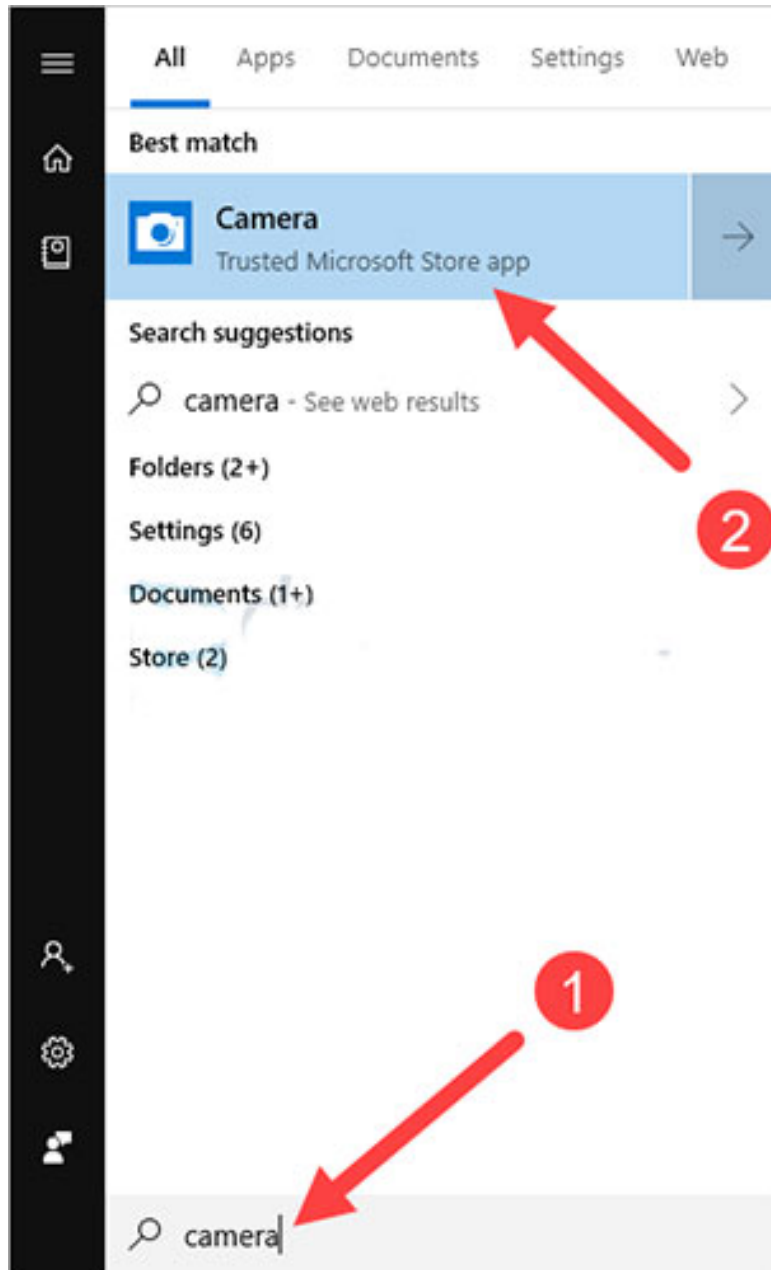
You will see the image recorded by the camera there if it works properly.

Method 2: Check the webcam with Camera app (Windows 10 only)

Windows 10 has a built-in **Camera** app for you to take photos. You can use it to check webcam.

To open **Camera** :

- 1) Click the **Start** button in the lower left corner of the screen.
- 2) Enter '**camera**' and click on **Camera**.



Open Camera

You will see a preview of the camera on the application.

You finished reading the article "**How to test the Windows 10 webcam webcam**" edited by the [TipsMake](#) team. We hope this article has provided you with many useful tech tips and tricks. You can search for similar articles on tips and guides. Thank you for reading and for following us regularly.