

How to switch Linksys router to Bridge mode

Setting the Linksys router to bridge mode will disable all router capabilities and turn it into an access point. The router will cease to function as a DHCP server and the built-in firewall and NAT features will no longer be valid.

You can set the Linksys router to bridge mode when you want:

1. Connect 2 routers capable of sharing network resources
2. Use the router as an additional access point on the existing network
3. Connect the router to a modem / router from an Internet service provider (ISP)
4. Disable the router's functionality to work with third party devices

For further router related informations you can visit [Best of Router](#).

Some important notes

Setting the Linksys router to bridge mode will disable all router capabilities and turn it into an access point. The router will cease to function as a DHCP server and the built-in firewall and NAT features will no longer be valid.

Important note : Before configuring your router to bridge mode, make sure you have the following:

1. A primary router - this is your primary router or it may be a modem / router provided by the ISP
2. An active Internet connection with the main router
3. 2 Ethernet cables
4. Linksys router has the ability to switch to bridge mode

For Linksys routers, the steps below only apply if they are using the classic web-based setup page.

Quick tip : Linksys Connect software features will be disabled on the router after the bridge mode is set. If you have already set up the router using the Linksys Connect software, you must reset the router to its factory default settings before setting it to bridge mode. To do this, press and hold the **Reset** button for 10 seconds with a pen or paper clip. Then unplug the router from the electrical outlet for 30 seconds and plug it back in. Wait for the LED to appear in the steady state.

How to switch Linksys router to Bridge mode

To proceed with the setup, follow the instructions below:

Step 1:

Connect an Ethernet cable from the computer to any numbered port of the router that converts to bridge mode. Do not connect anything to the current Internet port.



Connect Ethernet cable from computer to router

Important note : Routers set to bridge mode will still be connected to the main router using Ethernet cables. Establishing a wireless connection between 2 routers in this setting is not supported.

Step 2:

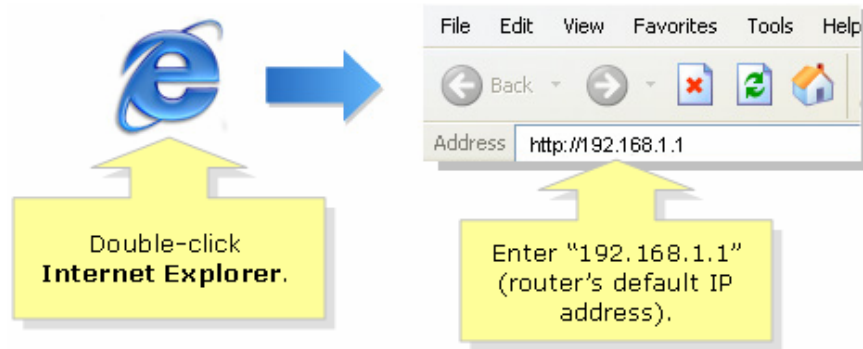
Plug one end of the power adapter into a power outlet and the other end into a Linksys router.



Plug one end of the power adapter into a power outlet and the other end into a Linksys router

Step 3:

Open a web browser and enter the router's IP address into the address bar. Press the button Enter. The default IP address of Linksys routers is **192.168.1.1**.

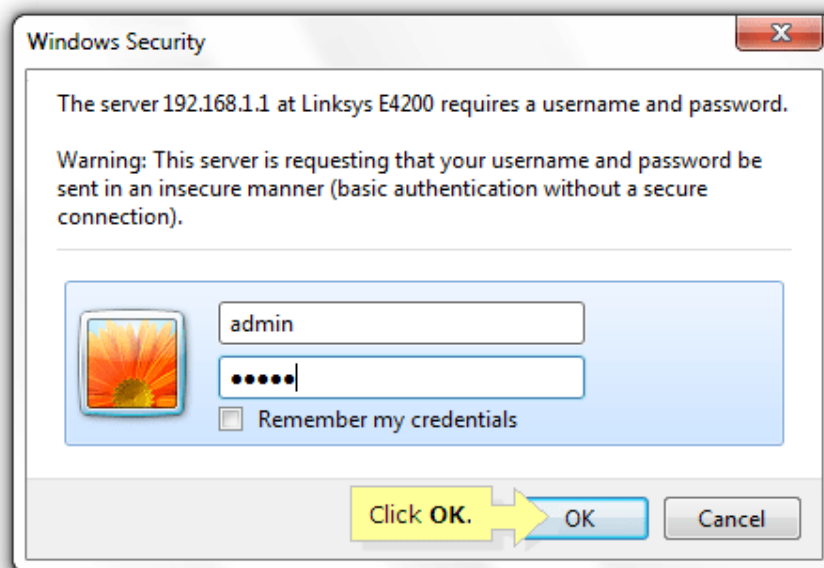


Enter the router's IP address in the address bar

Step 4:

There will be a prompt to enter the username and password of the router. Enter the login details of the router in the corresponding fields, then click **OK**. The default username and password are **admin**. For other router models, the username is left blank, and the password is **admin**.

1. List of default Linksys router passwords



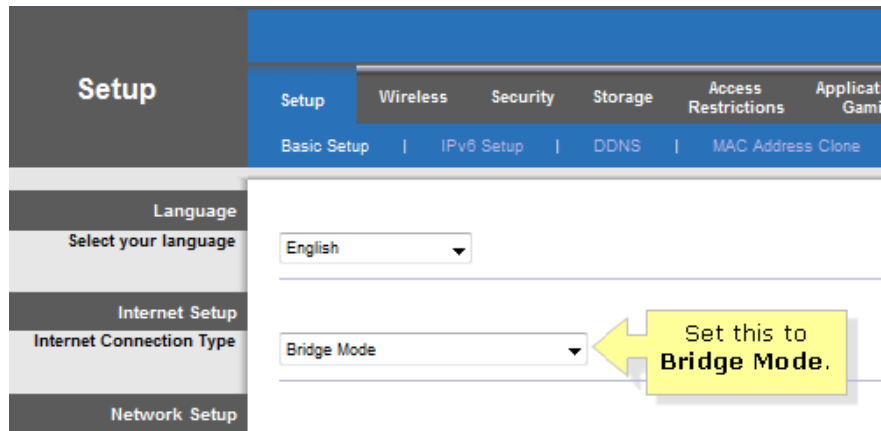
Enter the router username and password

Step 5:

When the warning window appears, check the **Do not show me this again box** and click **OK**.

Step 6:

You will then be taken to the router's web-based setup page. In **Internet Setup**, set **Internet Connection Type** to **Bridge Mode**.

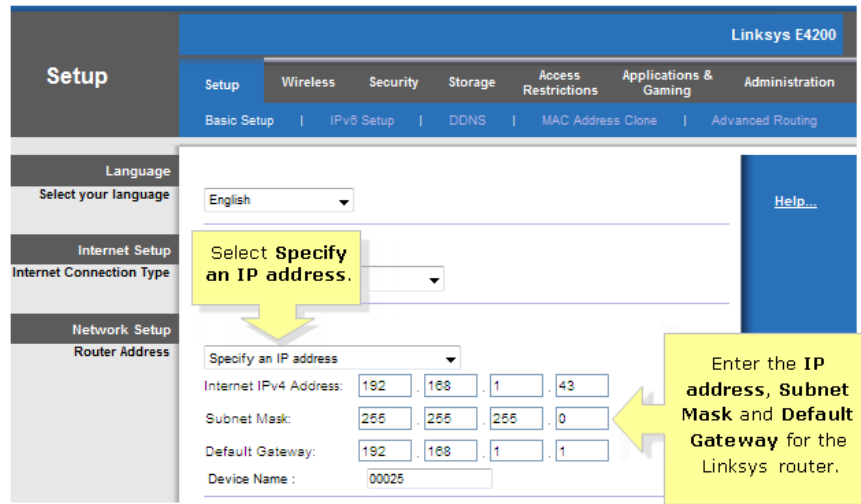


Set Internet Connection Type to Bridge Mode

Step 7:

Set **Router Address** to **Specify an IP address** and enter the appropriate IP, Subnet Mask and Default Gateway for the Linksys router, then click **Save Settings**.

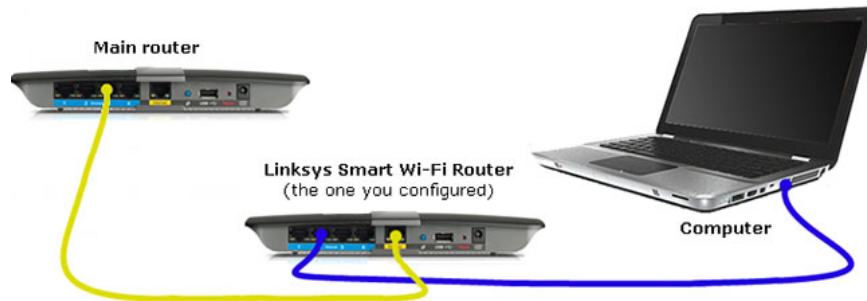
1. **Internet IPv4 Address** - The address used for the Linksys router. This value must be in the same range as the primary router (e.g. **192.168.1.43**).
2. **Subnet Mask** - Must have the same value as the primary router.
3. **Default Gateway** - This is the IP address of the main router.



Set Router Address to Specify an IP address

Step 8:

Connect the main router to the Internet port of the Linksys router. Your setup should look like this:



Connect the main router to the Internet port of the Linksys router

Quick tip : The wireless network name (SSID) for each router must be different to avoid conflicts for devices to connect to the wireless network.

Your Linksys router is now set to bridge mode. It can now be used as a useful access point in expanding wireless networks.

Note : In the event the router stops working while set to bridge mode, you can do any of the following:

1. Unplug the router from the electrical outlet for 10 seconds, then plug it back in later.
2. Firmware upgrade.
3. Reset and reconfigure the router.

You finished reading the article "**How to switch Linksys router to Bridge mode**" edited by the [TipsMake](#) team. We hope this article has provided you with many useful tech tips and tricks. You can search for similar articles on tips and guides. Thank you for reading and for following us regularly.