

How to stitch photos in Word

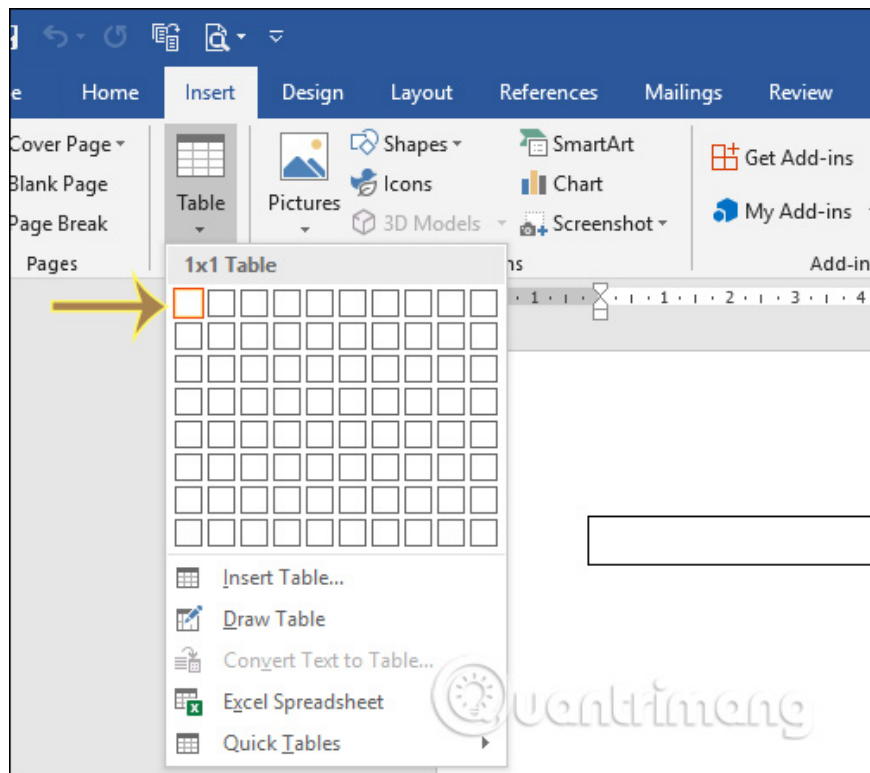
Collecting photos in Word is very simple, and you can stitch photos into frames in Word.

Inserting images in Word is basic and very simple. Besides, you can also combine images in Word, merge 2 images into 1 frame in Word with a not too complicated method. Often you think to stitch photos, you need professional photo editing software like Photoshop, or simply use Microsoft Paint to stitch photos. However, if we do not need much editing, we can also stitch photos right in Word. The following article will show you how to stitch photos in Word.

1. Stitch photos in Word using Table

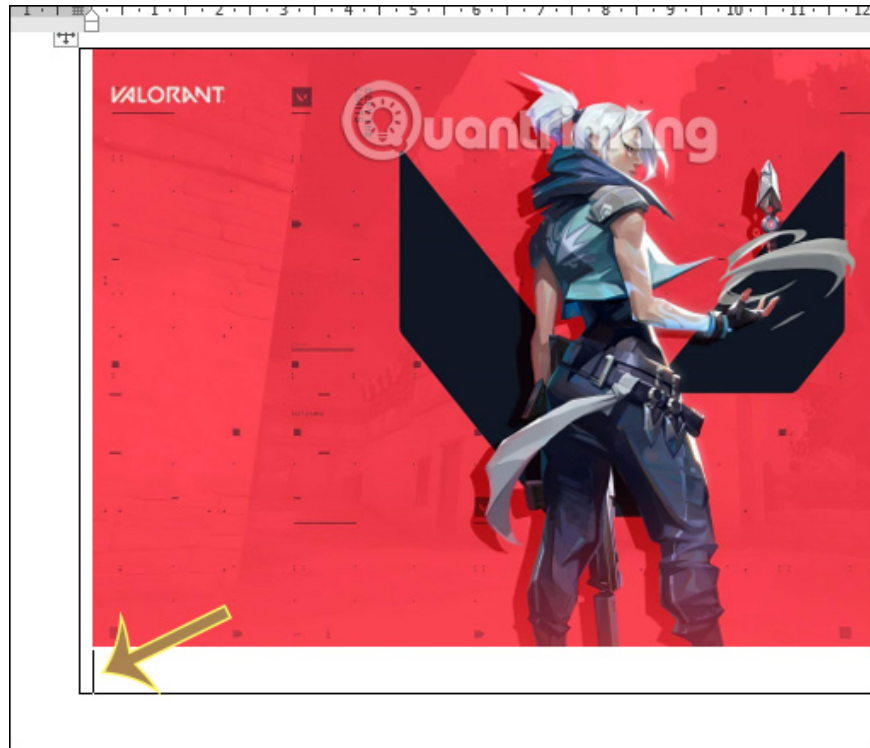
Step 1:

We click on the Table and select a square to **insert only one square in the table** into Word. After you have created a cell, click on the table and **press Shift + Enter to create two adjacent lines** in the table.

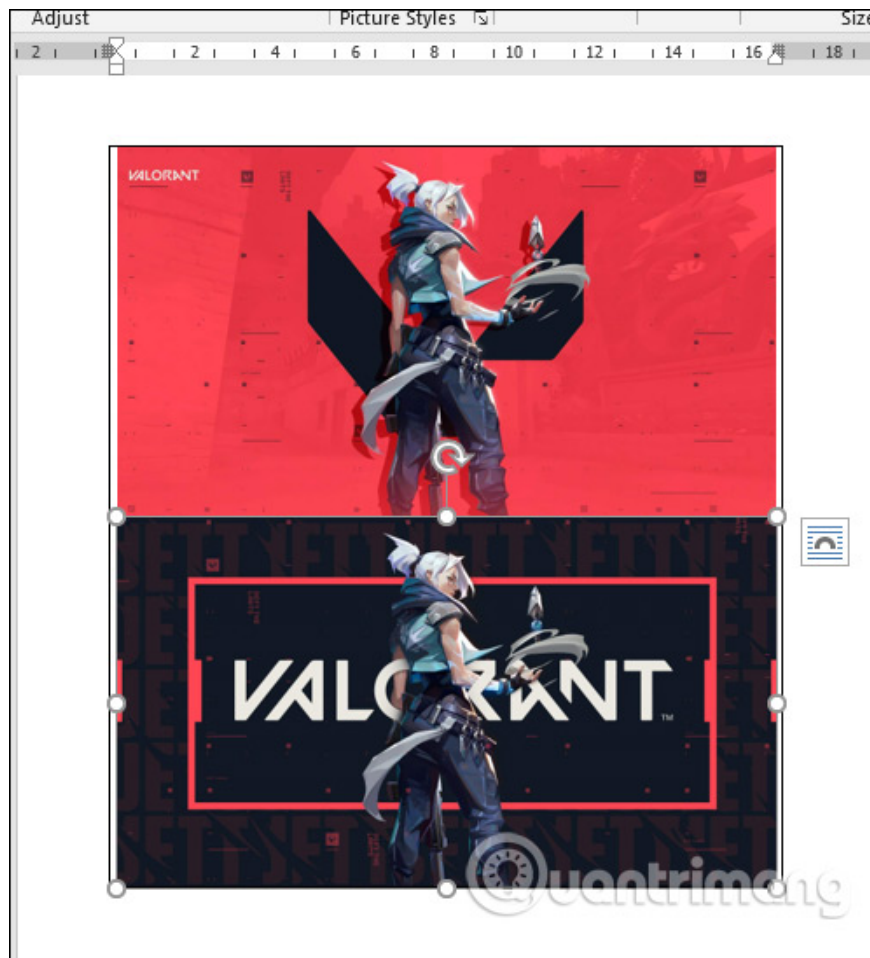


Step 2:

Next, **click on the first row in the table** , then click on **the Insert button** and select **Pictures** in the Illustrations group to insert images into the table. After inserting the first image, **click on the second row** of the table to insert the second image into the table.



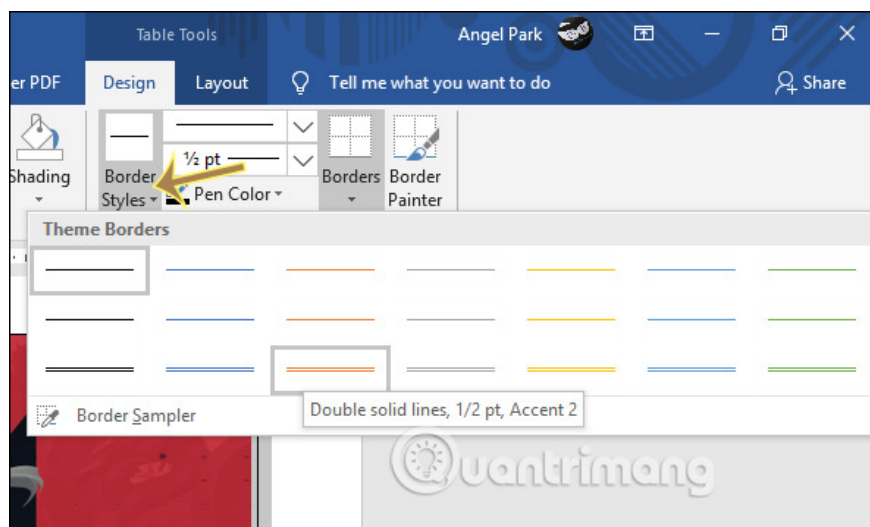
Result 2 images have been merged into 1 main frame is the current table.



Step 3:

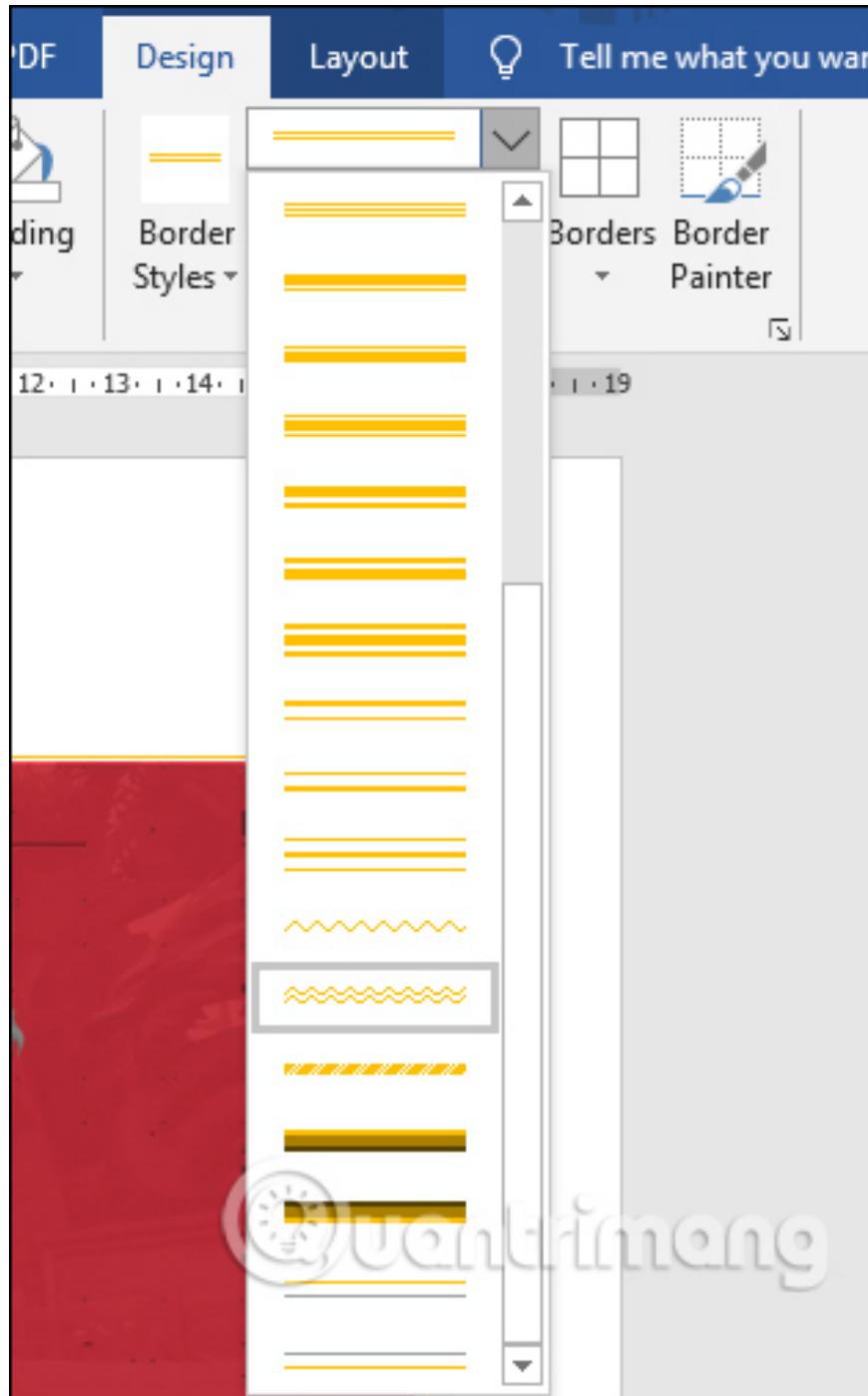
Click on **the plus icon in the top left corner of the board** to **highlight the entire frame** . Then click **Design**, then click **Border Styles** to change the border for the table.

Or faster way is to click on Border and select All Borders is done.

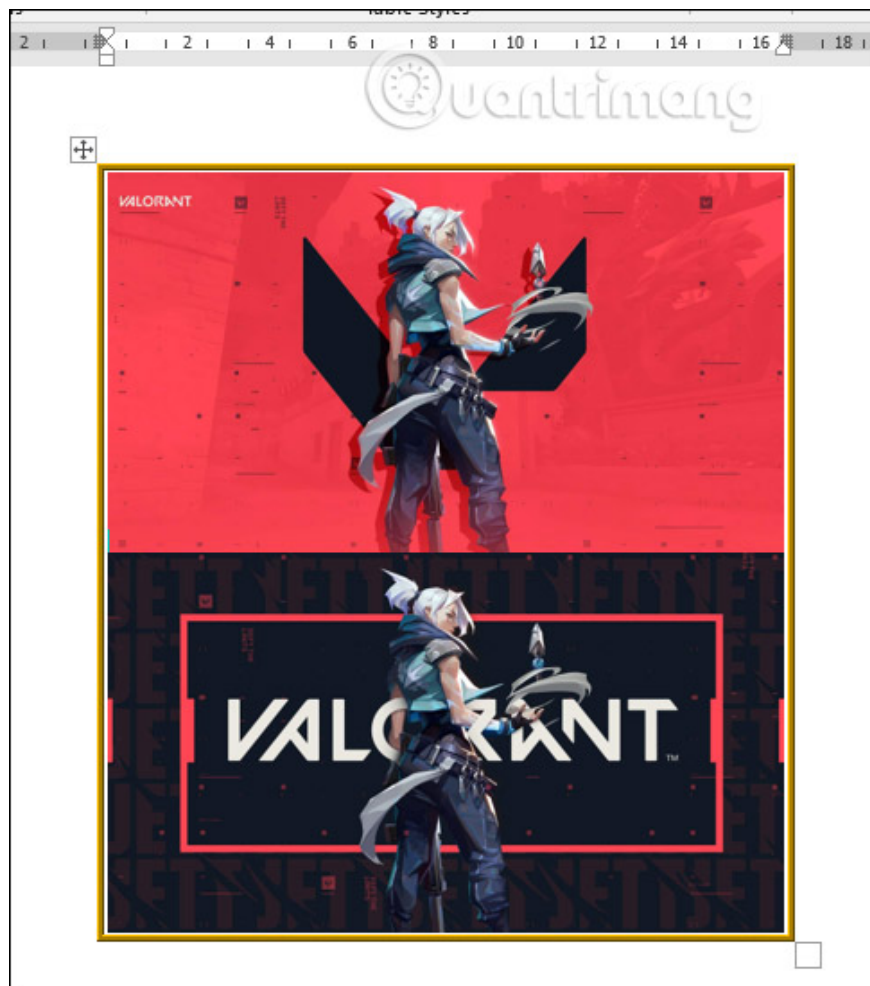


Step 4:

If you want to use more photo borders then click **the border icon** to change **the type of border** used. Then also click All Borders to create the border.



The final result is that you are collage in the Word frame as shown.

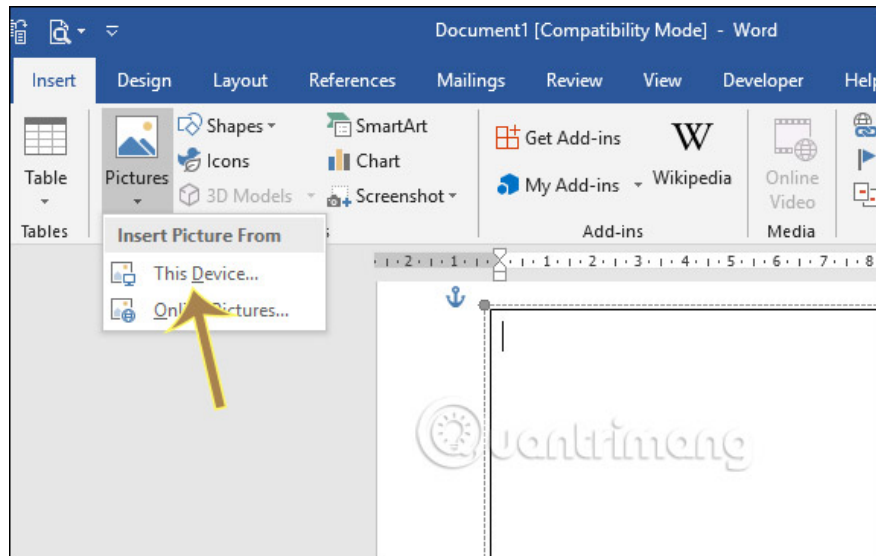


2. Merge 2 images into 1 Word frame using Text Box

Step 1:

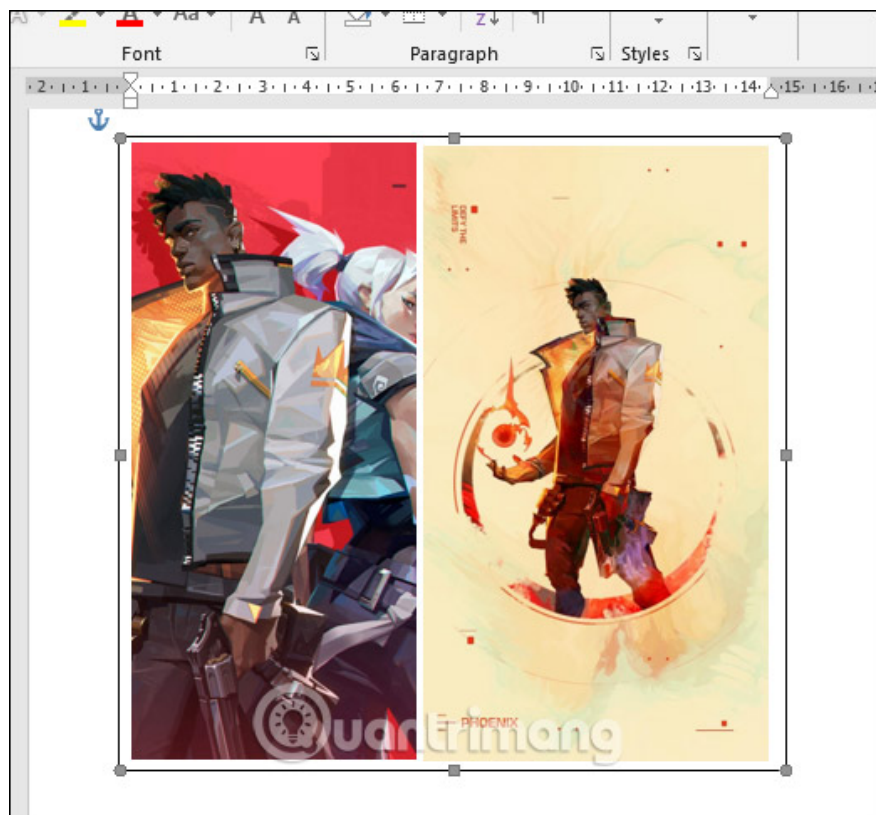
First we will insert the Text Box into Word. Click **Shapes** and then select the **Text Box** to insert in Word.

Click inside the Text Box, then click **Insert** on the toolbar and **select Pictures** to insert the picture. The image inserted into the frame automatically resizes to the frame.



Step 2:

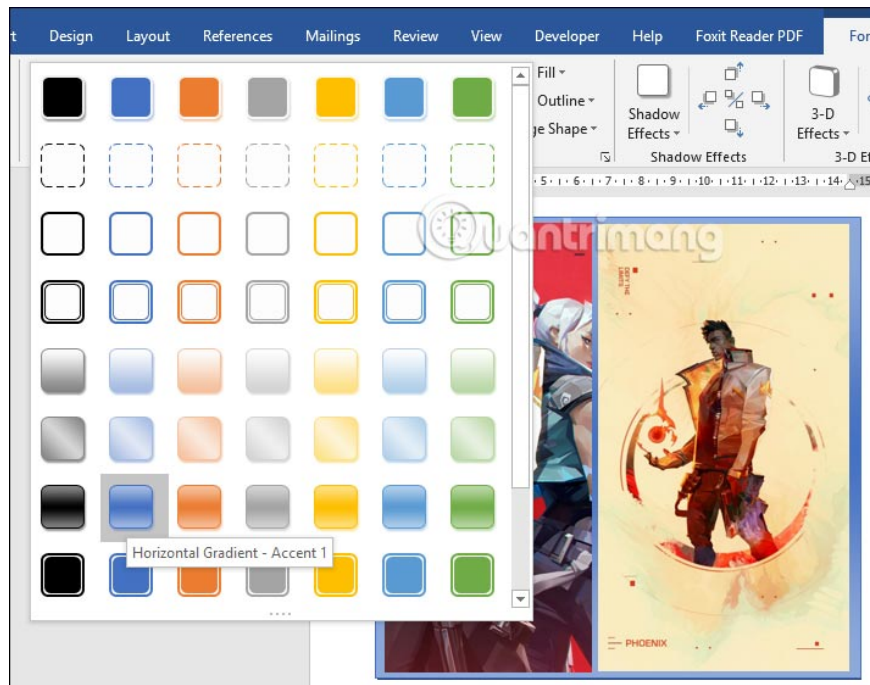
Then also **insert animal image 2 into the Text Box** . Results 2 images have been stitched into the frame. You can then adjust the image size if desired.



Step 3:

To change the border , click the border of the Text Box border. Next, click on the **Format tab** and select the styles in the **Styles section** . The new border is then applied to the image as well.

Also can be further changed by selecting Shape Fill, Shape Outline or Shape Effects.



You finished reading the article "**How to stitch photos in Word**" edited by the [TipsMake](#) team. We hope this article has provided you with many useful tech tips and tricks. You can search for similar articles on tips and guides. Thank you for reading and for following us regularly.