

How to start Windows Server 2012 in Safe Mode

If you can't boot Windows for some reason, because your computer has a virus, software error or driver installation error, you can start Windows in Safe Mode to fix problems. try.

Safe Mode in Windows to disable unnecessary applications and drivers (drivers) uploaded during system startup.

If you can't boot Windows for some reason, because your computer has a virus, software error or driver installation error, you can start Windows in Safe Mode to fix problems. try.

In previous posts, Network Administrator showed you how to boot Windows 7,8 and 10 in Safe Mode. In the following article, Network Administrator will guide you how to start Windows Server 2012 in Safe Mode.

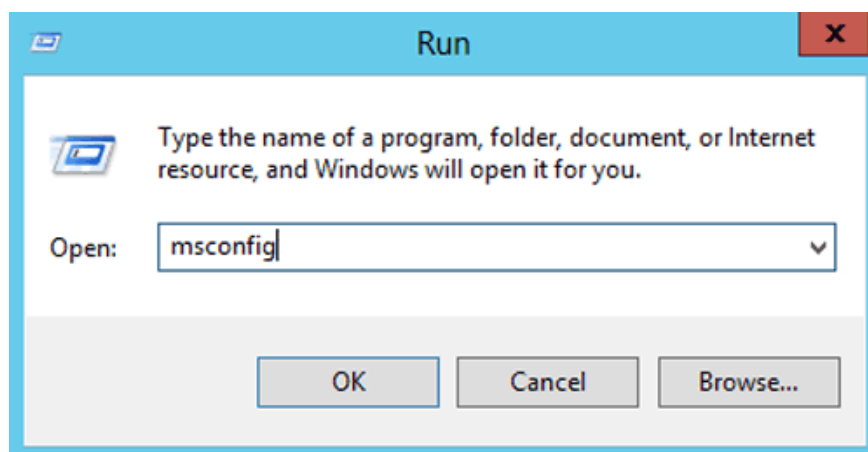
1. How to start Windows Server 2012 in Safe Mode?

Step 1:

Press **Windows + X** key combination then click **Run** . Alternatively, on the Start Menu, click **Run** to open the Run dialog box.

Step 2:

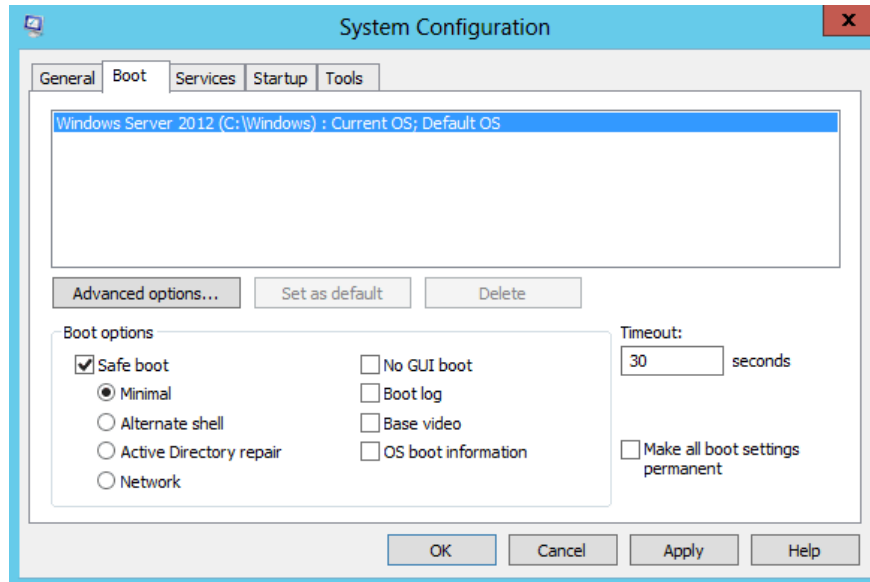
On the Run dialog box, enter the **msconfig** command and click **OK** .



Step 3:

Now on the screen you will see the System Configuration dialog window appear. At the window, click the **Boot** tab.

Access the **Boot Options** option and check the **Safe Boot** option, then select **OK** .

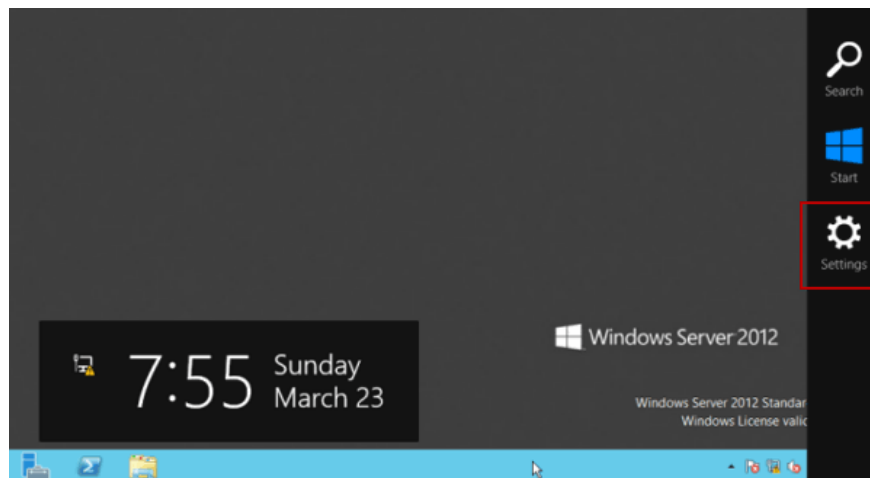


Restart your system so that the configuration is applied on your Windows Server 2012 system.

2. Start Windows Server 2012 in Safe Mode

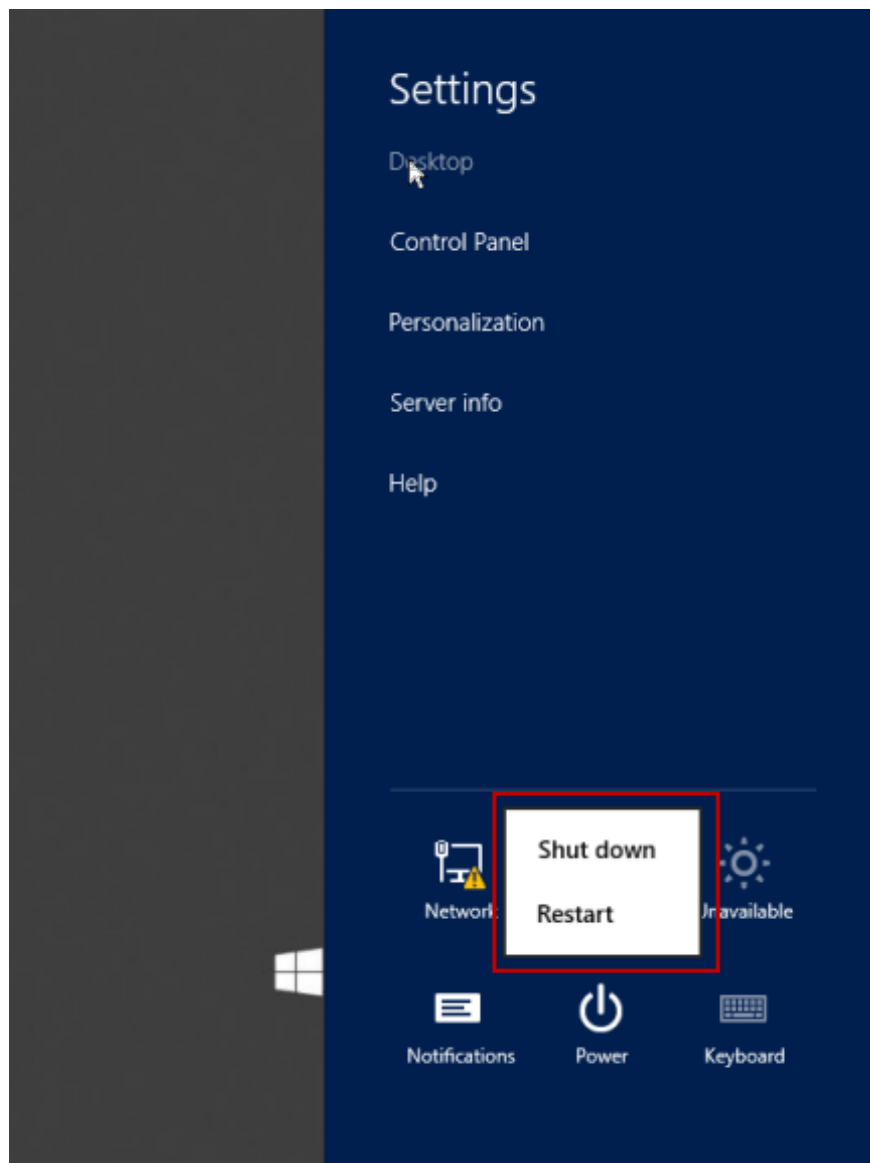
Step 1:

Press **Windows + C** key combination to open Settings.



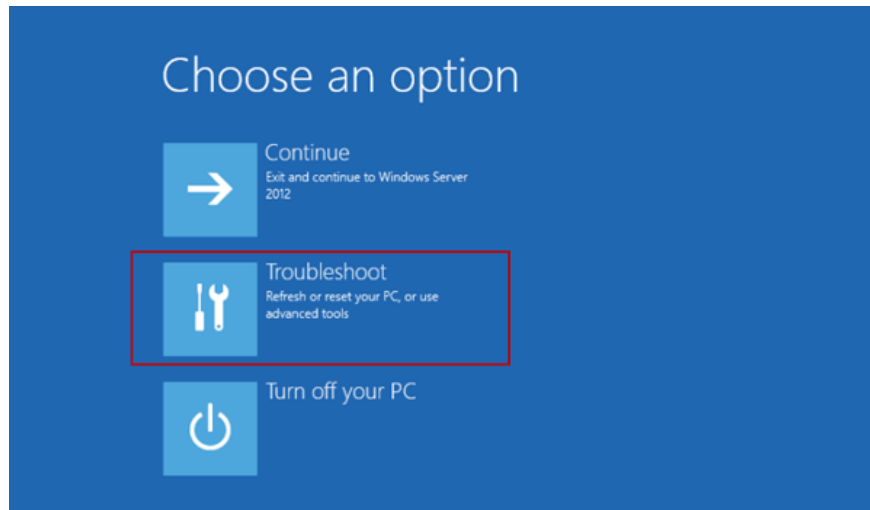
Step 2:

Click on **Power** , press and hold the **Shift** key, then click **Restart** .



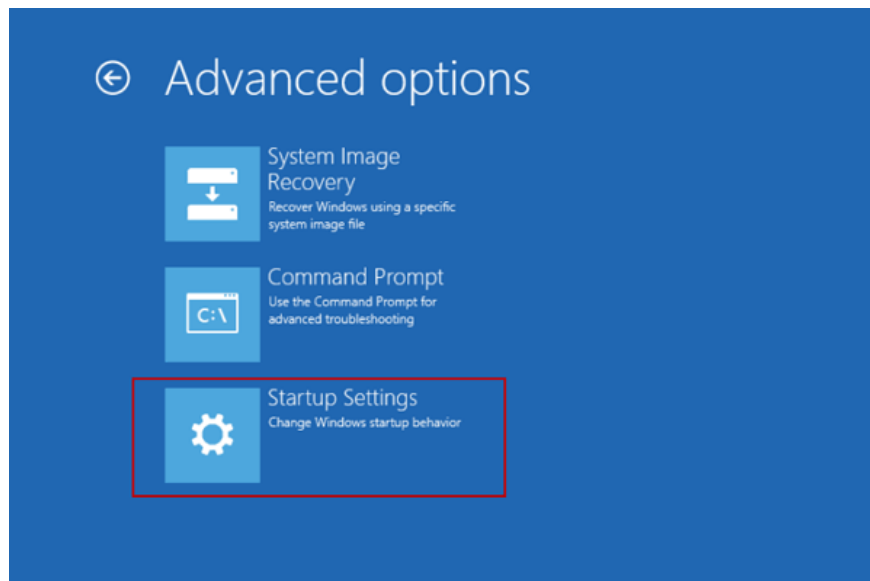
Step 3:

Wait until the popup window appears, and click on **Troubleshoot** .



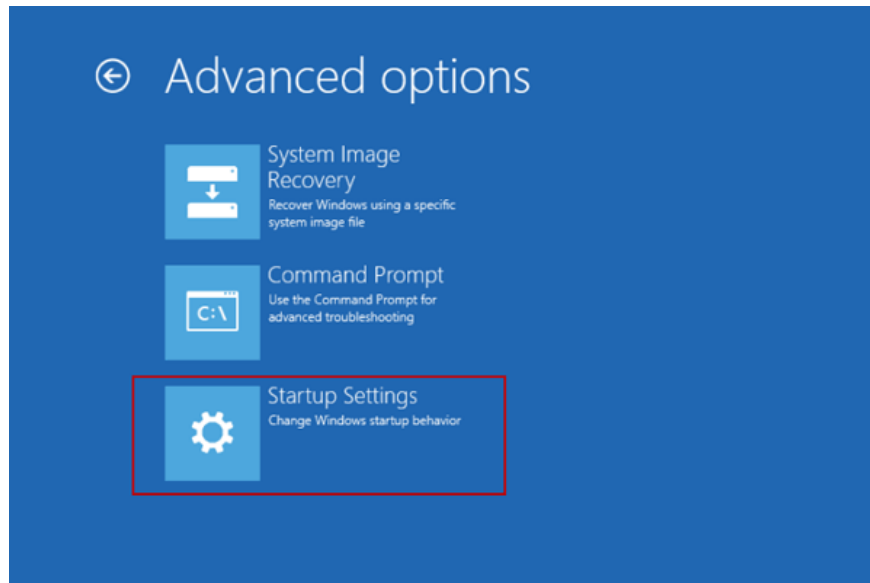
Step 4:

Click to select the **Advanced Options** option.



Step 5:

Click on **Startup Settings** .



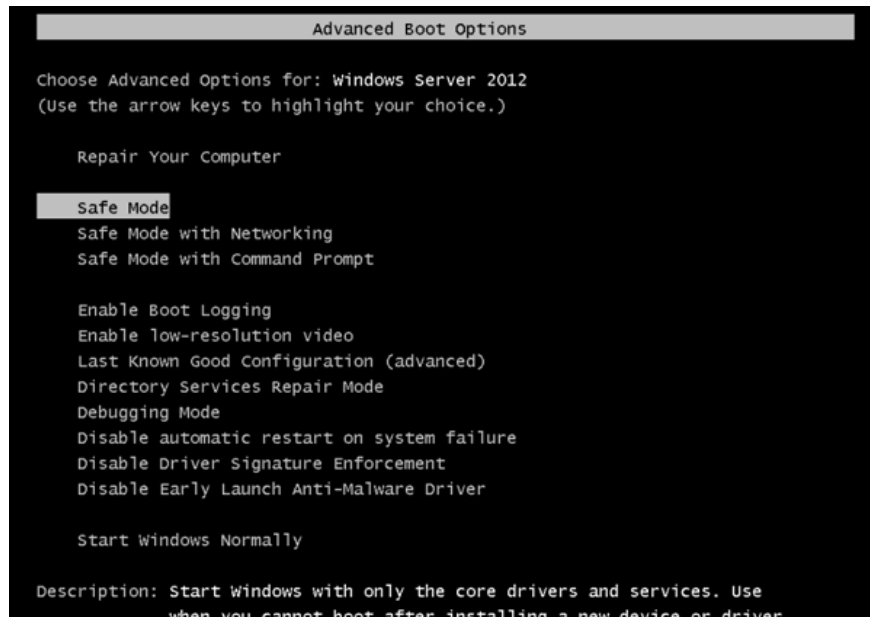
Step 6:

Click **Restart**.



Step 7:

On the Advanced Boot Options popup window, select **Safe Mode** and then start your Windows Server 2012 in Safe Mode.

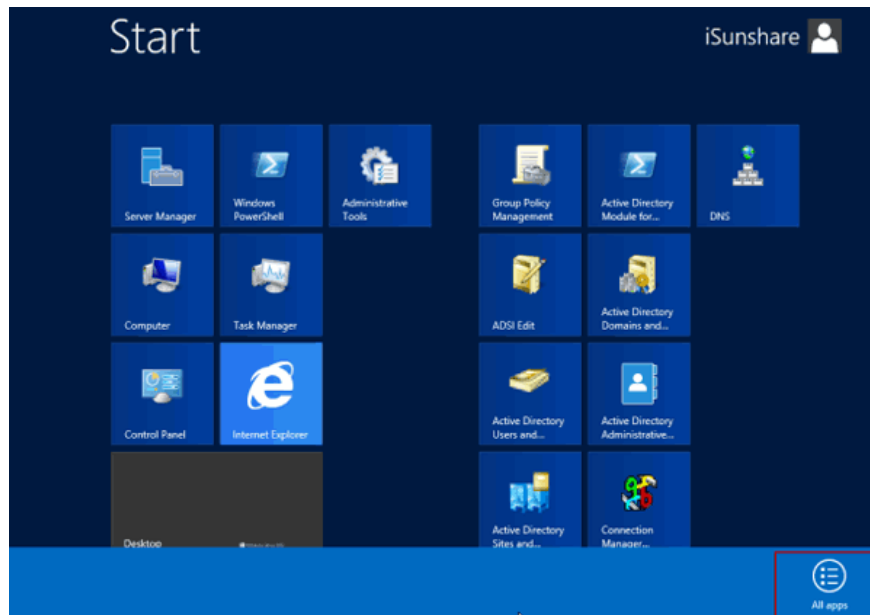


3. How to start Windows Server 2012 in Safe Mode with the command?

Step 1:

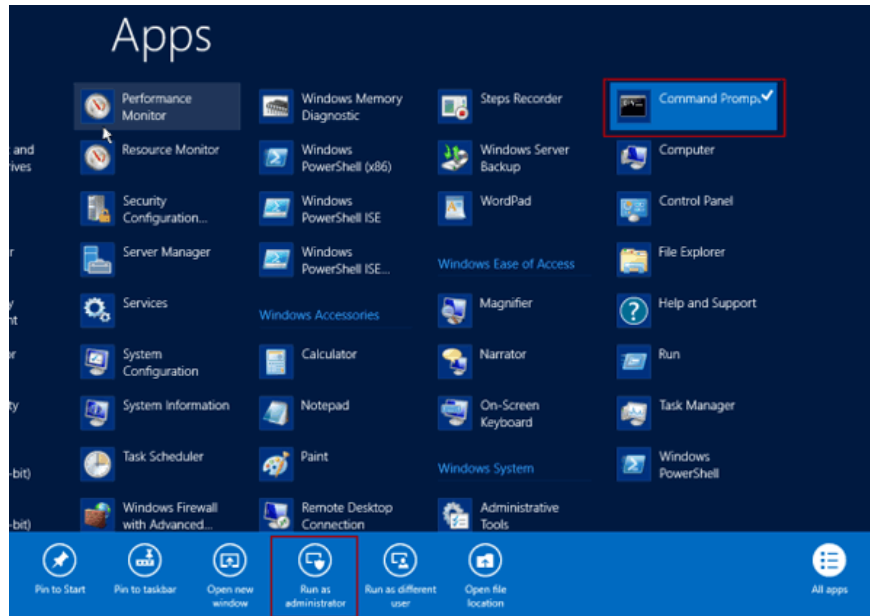
Press **Windows + C** key combination then click **Start** to open Start Screen.

Right-click on Start Screen and select **All apps** .



Step 2:

Right-click the **Command Prompt** and select **Run As Administrator** .



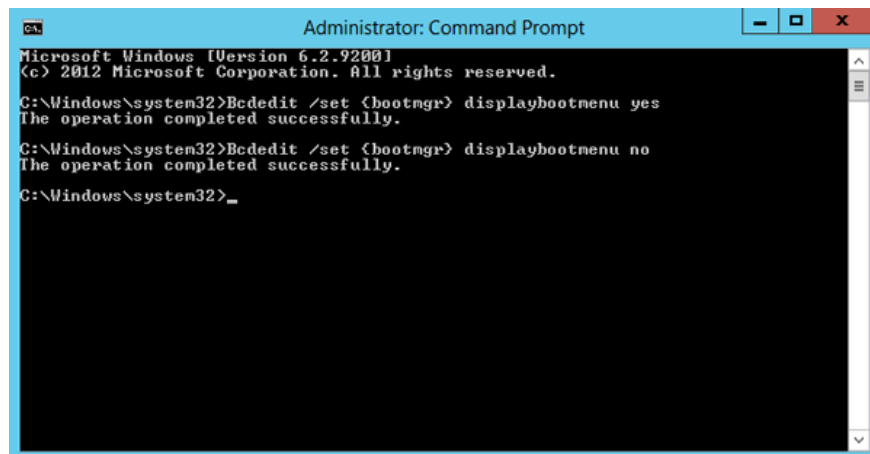
Step 3:

Select **Yes** .

Step 4:

Enter **Bcdedit / set {bootmgr} displaybootmenu yes** into the Command Prompt window and press **Enter** .

If you do not want to be prompted to enter the option at startup, change **Yes** to **No**.



Step 5:

Once completed, restart your computer, then press **F8** to open the boot process setup window, then press **F4** or **4** to boot in Safe Mode.

You can refer to some of the following articles:

1. **How to start Windows 10 in Safe Mode**
2. **Enable Safe Mode in Windows 7**
3. **Enable, use, and disable Safe Mode in Windows 8**
4. **Start Windows 7, 8, 10 in Safe Mode without F8 key**

Good luck!

You finished reading the article "**How to start Windows Server 2012 in Safe Mode**" edited by the [TipsMake](#) team. We hope this article has provided you with many useful tech tips and tricks. You can search for similar articles on tips and guides. Thank you for reading and for following us regularly.