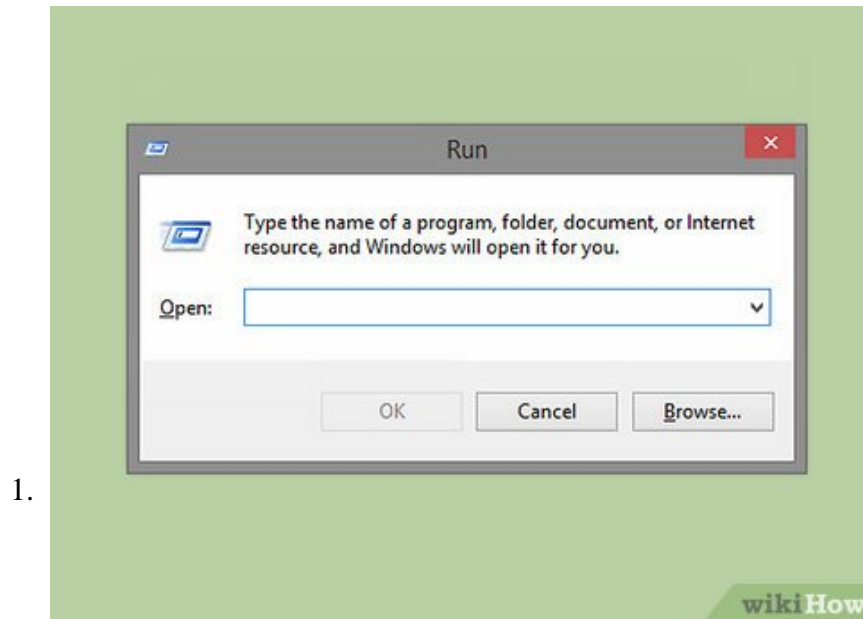


How to Start Windows 8 in Safe Mode

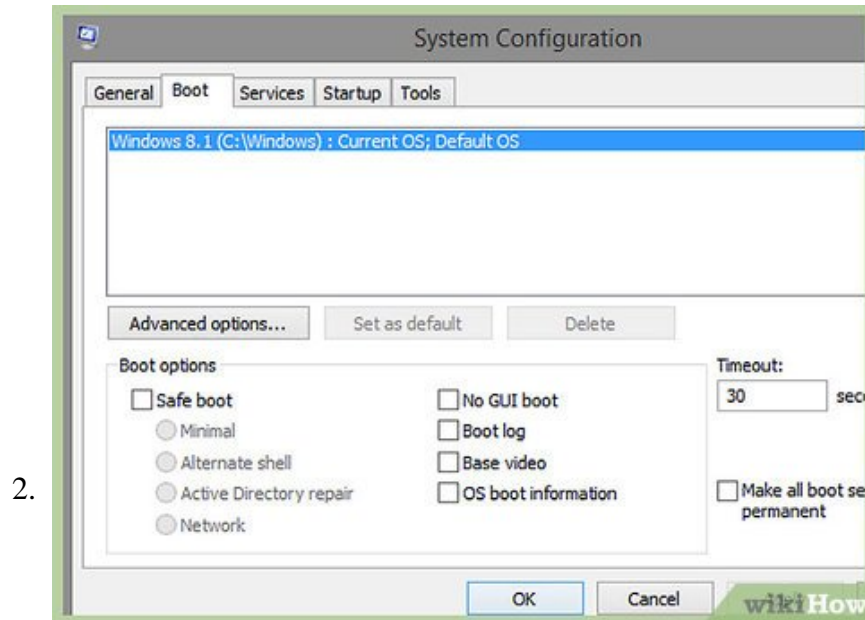
Safe mode is an advanced troubleshooting mode where Windows boots up without third-party software. Windows 8 starts up faster than earlier versions of Windows and optimizes various setting for touchscreen devices, therefore the procedures...

Method 1 of 3:

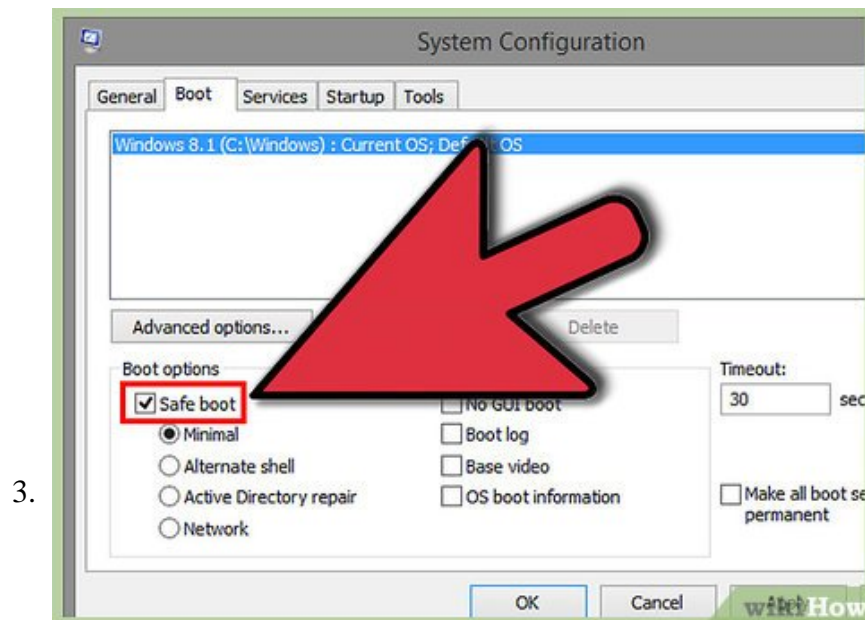
Using Safe Mode When the Computer is Running



Use the Run shortcut. Press the 'Win' button and the letter 'R' at the same time. The Run utility should pop up.

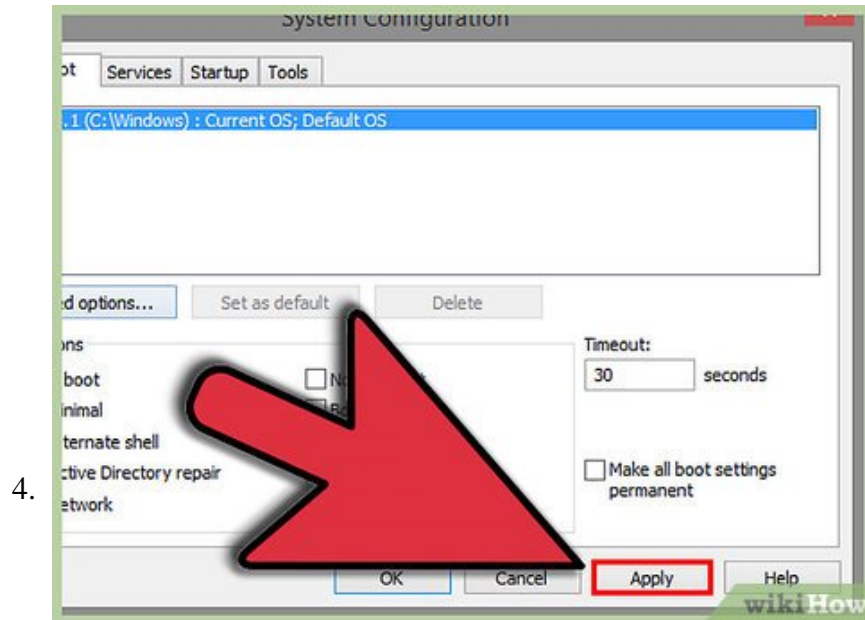


Select the Boot tab.

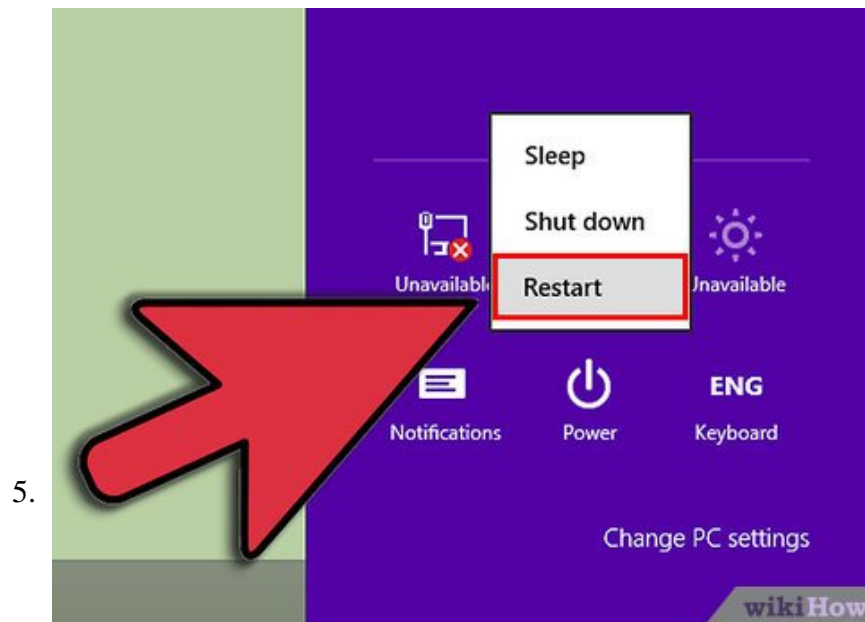


Click 'Safe Boot.' Check the box for the type of safe mode you want to perform. Choices include 'minimal,' 'directory repair,' 'network' and 'alternate shell.'

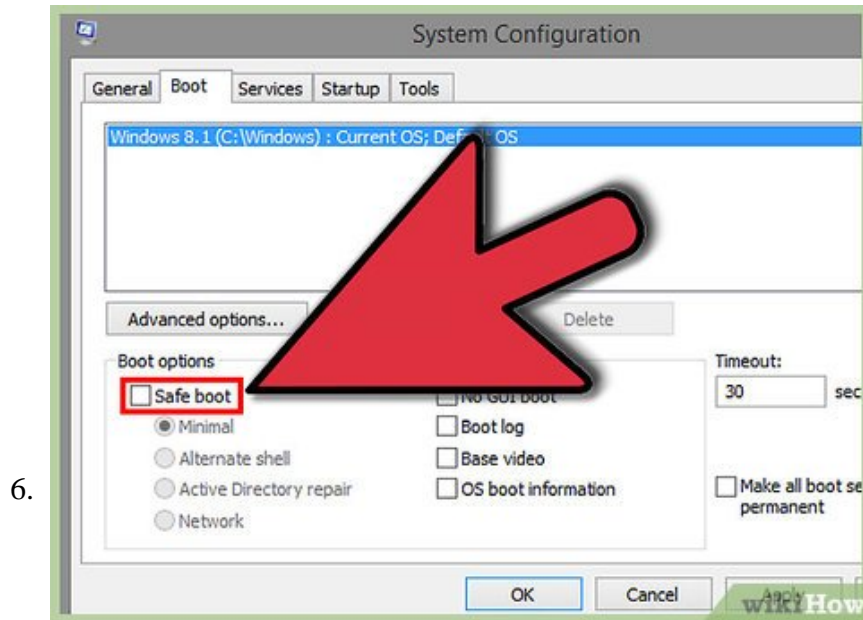
1. If you are simply fixing a few minor problems, the minimal option will work best.



Press the Apply button.



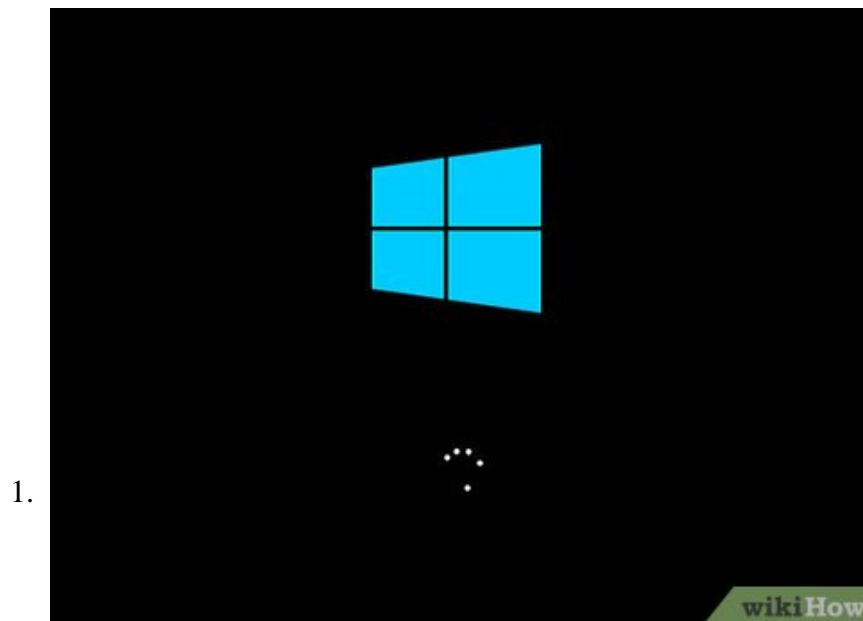
Restart your computer. It will boot into safe mode.



Repeat the Run shortcut to return to the same configuration settings and deselect safe mode. If you do not take it out of safe mode, it will reboot in this mode each time you restart your computer. [1]

Method 2 of 3:

Using Safe Mode When the Computer is Off



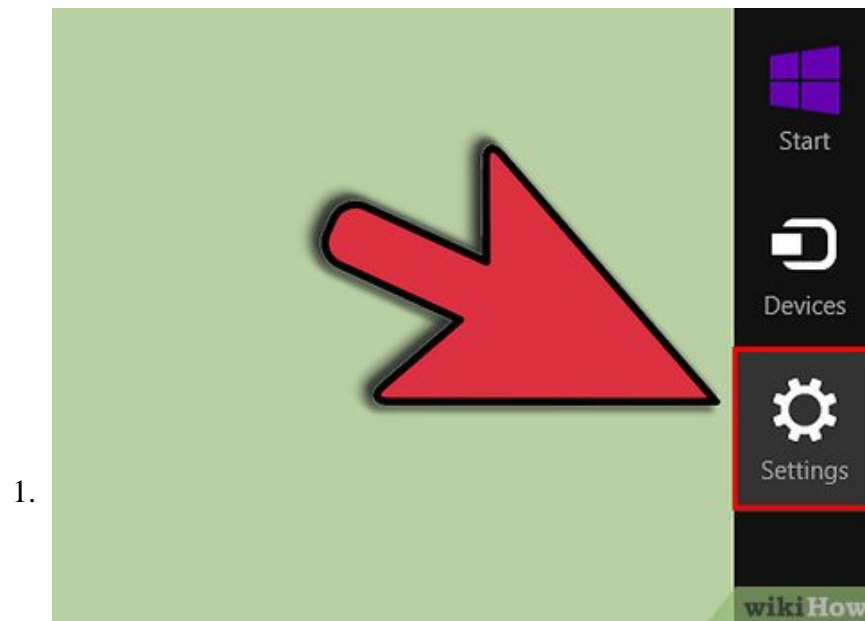
Click the Power button to start up the computer.



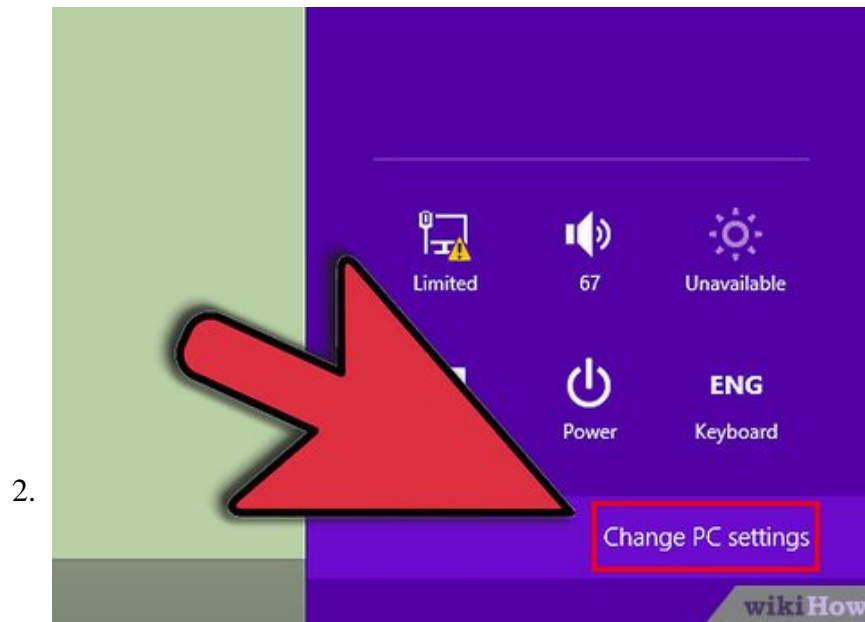
Do not sign in when you get to the login screen for windows. Instead, click the power icon on the bottom right of the screen, and then hold down the Shift button and click restart. ^[2]

Method 3 of 3:

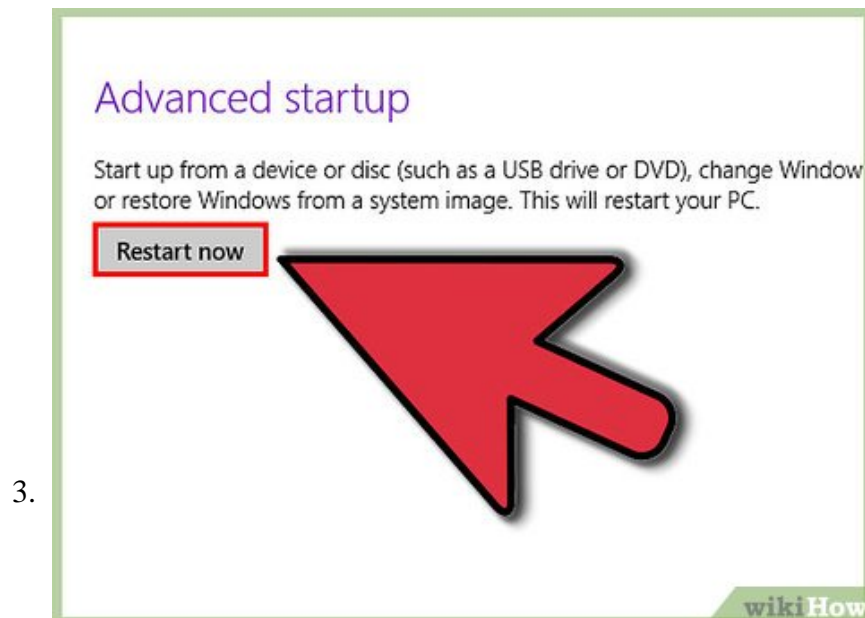
Using Safe Mode From the Settings Screen



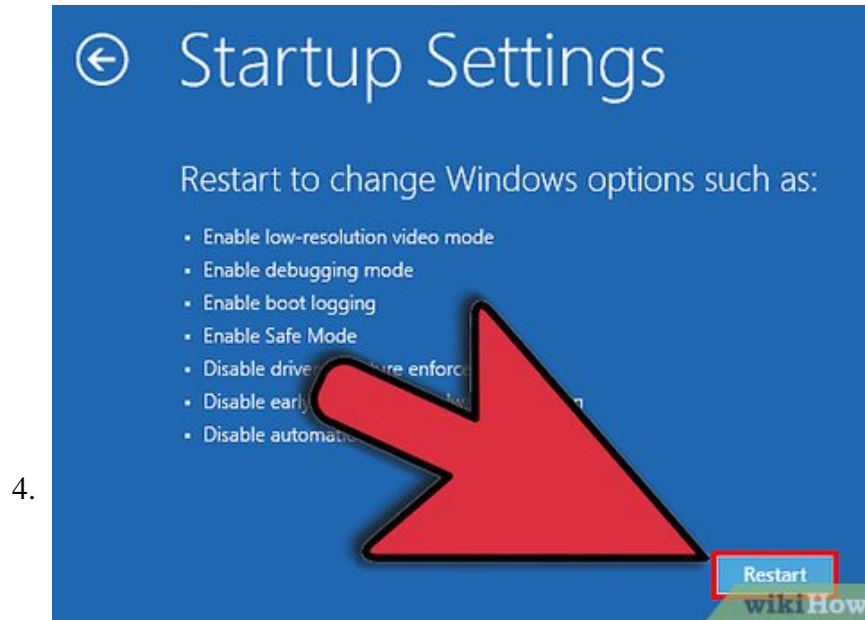
Move your mouse or index finger to the right edge of the screen. Select the Settings menu. This is the gear icon.



Choose 'Change PC Settings.' Select 'General.'



Select 'Advanced Startup' and then choose 'Restart now.' When you are asked to choose an option, select 'Troubleshoot.'



Choose 'Startup Settings' and then 'Restart.' You should arrive at a restart screen that allows you to sign in with safe mode.

1. This is the method provided by Windows 8 user manuals to adjust startup settings. However, this is the most time intensive of all 3 methods. ^[3]

You finished reading the article "**How to Start Windows 8 in Safe Mode**" edited by the [TipsMake](#) team. We hope this article has provided you with many useful tech tips and tricks. You can search for similar articles on tips and guides. Thank you for reading and for following us regularly.