

# How to split 1 cell into 2 cells in Excel - Split cells in Excel

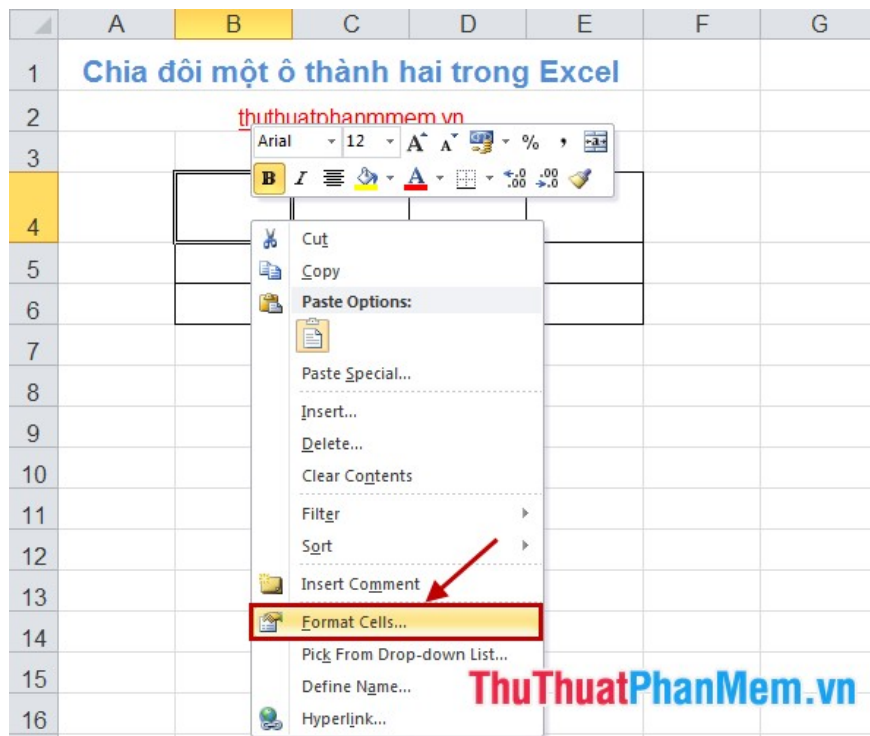
How to split 1 cell into 2 cells in Excel - Split cells in Excel. Depending on different purposes, you want to split a cell into two cells to enter two different data in one cell and still be able to calculate normally as other cells.

Depending on different purposes, you want to split a cell into two cells to enter two different data in one cell and still be able to calculate normally as other cells.

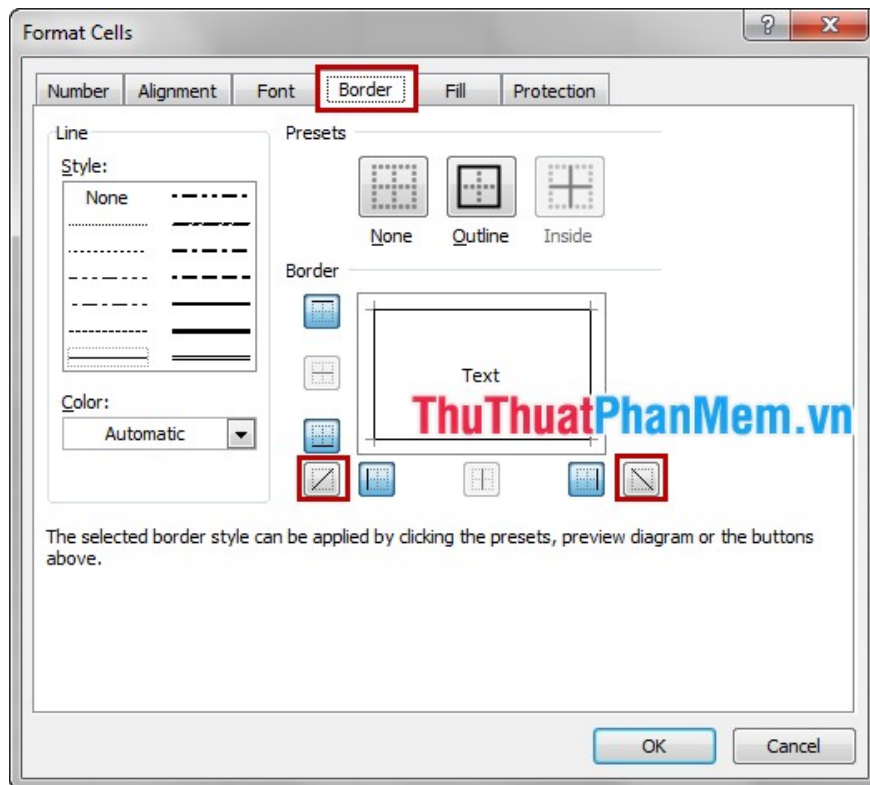


The following article guides you through the steps to split a cell into two in Excel.

**Step 1:** Right-click the cell in question and select **Format Cells** .



**Step 2:** The **Format Cells** dialog box appears , select the **Border** tab and select the diagonal from the top down or from the bottom to match your requirements as shown below. Then click **OK** .



**Step 3:** Now the cells you split have split into two cells divided by diagonal lines.

1	<b>Chia đôi một ô thành hai trong Excel</b>			
2	<a href="http://thuthuatphanmmem.vn">thuthuatphanmmem.vn</a>			
3				
4				
5				
6				
7	<b>ThuThuatPhanMem.vn</b>			
8				

You only need to enter data for the upper half cell and press **Alt + Enter** to enter data for the lower half.

You use the **Space** key (spacebar) to adjust the data accordingly into small cells.

1	<b>Chia đôi một ô thành hai trong Excel</b>			
2	<a href="http://thuthuatphanmmem.vn">thuthuatphanmmem.vn</a>			
3				
4				
5				
6				
7	<b>ThuThuatPhanMem.vn</b>			
8				

So with a simple trick, you can split a cell into two in Excel suitable for the purpose of use. Good luck!

You finished reading the article "**How to split 1 cell into 2 cells in Excel - Split cells in Excel**" edited by the [TipsMake](#) team. We hope this article has provided you with many useful tech tips and tricks. You can search for similar articles on tips and guides. Thank you for reading and for following us regularly.