

# How to speed up YouTube on Microsoft Edge Windows 10

New interface YouTube on Microsoft Edge is reflected more slowly than other browsers. If so, you can bring YouTube back to the old interface.

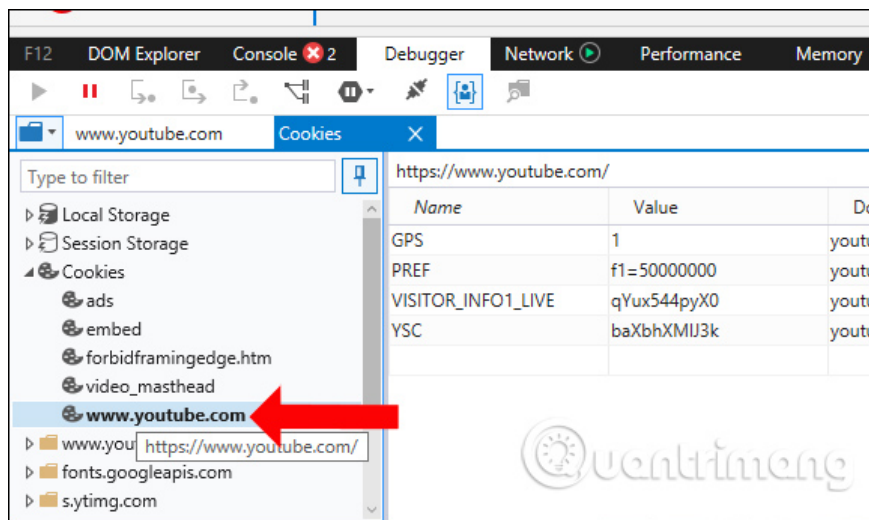
YouTube Edge on Microsoft Edge has been updated to the new interface, changing some parts compared to the old interface. However, many people reflect that the performance of YouTube on Microsoft Edge is slower when watching videos on Google Chrome, such as searching videos, loading videos on the page, etc. If so, you can put the YouTube interface on Microsoft Edge with the old interface.

1. Speed ??of downloading YouTube videos is as slow as slugs, this is a fix
2. Want to load page speed on Edge browser faster, enable this feature
3. Instructions for downloading YouTube videos on Edge browser

## Guide to speeding up YouTube on Microsoft Edge

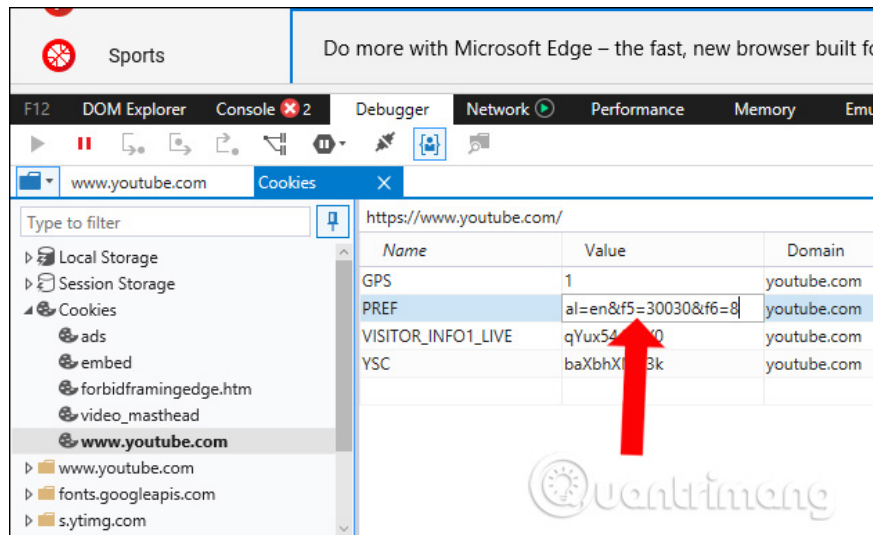
### Step 1:

You open the Microsoft Edge browser and access YouTube. Then press **F12** and enter the **Debugger tab** . Click **Cookies** and select **www.youtube.com** .



### Step 2:

Look at the content at the column Name to find **PREF** and **enter code al = en & f5 = 30030 & f6 = 8** as shown below. Then press F12 and reload the YouTube page and will see the page interface return to the old interface.



So we have accelerated YouTube activity on the Microsoft Edge browser, by bringing the site back to the old interface.

See more:

1. How to fix 5 common problems on Microsoft Edge browser
2. How to use the menu menu to speed up Microsoft Edge browser
3. Steps to change Download options on Edge browser Windows 10

I wish you all success!

You finished reading the article "**How to speed up YouTube on Microsoft Edge Windows 10**" edited by the [TipsMake](#) team. We hope this article has provided you with many useful tech tips and tricks. You can search for similar articles on tips and guides. Thank you for reading and for following us regularly.