

# How to specify the target feature update version in Windows 10

This guide will show you how to specify the TargetReleaseVersion version of Windows 10 you want to switch to or maintain in Windows Update, until the end of the service on Windows 10 Pro, Enterprise, or Education.

The new Policy TargetReleaseVersion is available in Windows 10 version 1803 and above, allowing you to specify which version of Windows 10 feature updates you want your computer to switch to and / or maintain until the version ends support. or when you reconfigure this policy.

1. If you do not update this policy before the device finishes supporting, the device will automatically be updated after 60 days of service for the device version.
2. If you specify TargetReleaseVersion the same as the current version, Windows 10 will stay there until the end of the service.
3. If you specify TargetReleaseVersion higher than the current version, Windows 10 will only update directly to the specified version, even if there is a higher version.

This guide will show you how to specify the TargetReleaseVersion version of Windows 10 you want to switch to or maintain in Windows Update, until the end of the service on Windows 10 Pro, Enterprise, or Education.

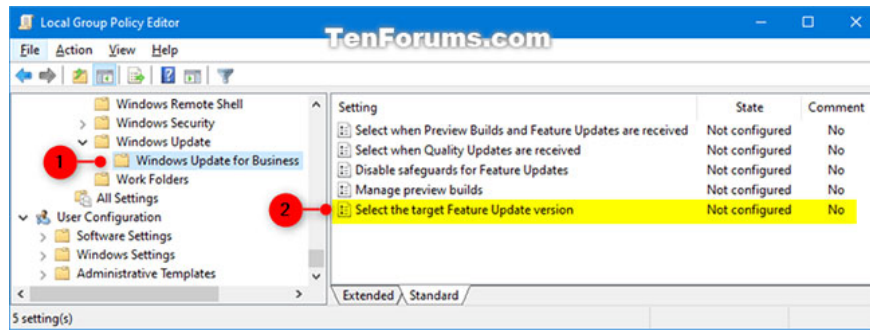
**Note** : You must be logged in as an administrator to specify the **TargetReleaseVersion** version for your Windows 10 computer.

## Specify the updated version of the target feature in the Local Group Policy Editor

This option is only available in versions of Windows 10 2004 and above.

1. Open Local Group Policy Editor.
2. Navigate to the location below in the left panel of the Local Group Policy Editor.

Computer Configuration > Administrative Templates > Windows Components > Windows



Navigate to the above position

3. On the right panel of **Windows Update for Business** , in the **Local Group Policy Editor** , double-click the policy **Select the target Feature Update version** to edit.

4. Follow step 5 (to specify) or step 6 (to undo) below, depending on what you want to do.

5. To specify the updated version of the target feature

A) Select **Enabled**.

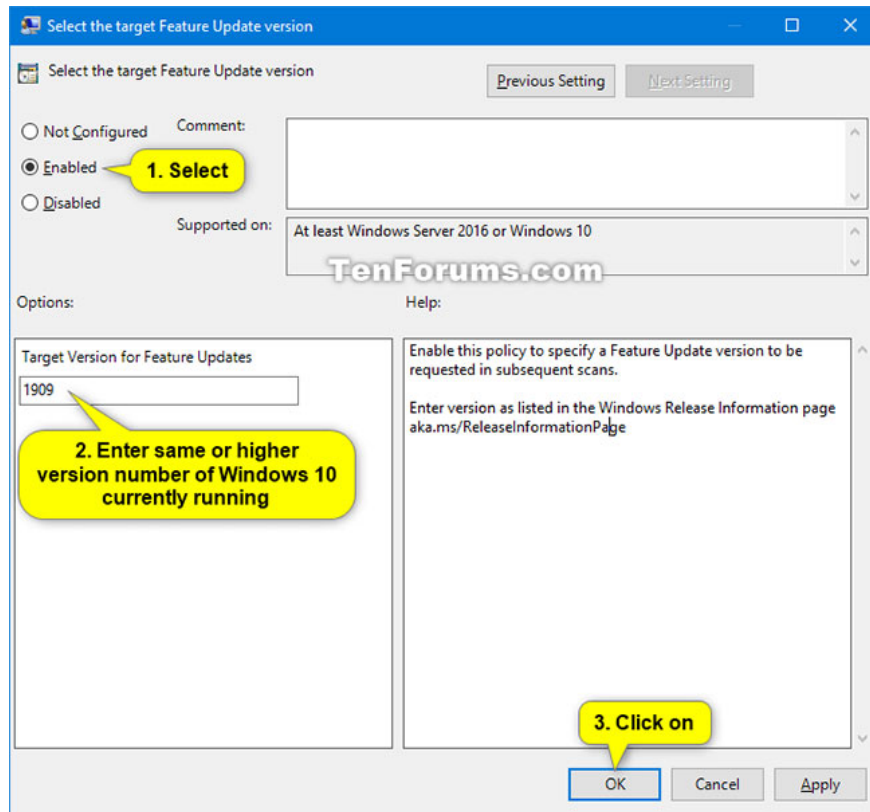
B) In **Options** , enter the version (eg "1909") you want to specify in the **Target Version for Feature Updates box** , click **OK** and go to step 7 below.

You can see the list of Windows 10 versions that will be used as values ??in the Windows 10 release information panel.

Version	Servicing option	Availability date	OS build	Latest revision date	End of service: Home, Pro, Pro Education, Pro for Workstations and IoT Core	End of service: Enterprise, Education and IoT Enterprise
2004	Semi-Annual Channel	2020-05-27	19041.331	2020-06-18	2021-12-14	2021-12-14
1909	Semi-Annual Channel	2019-11-12	18363.904	2020-06-16	2021-05-11	2022-05-10
1903	Semi-Annual Channel	2019-05-21	18362.904	2020-06-16	2020-12-08	2020-12-08
1809	Semi-Annual Channel	2019-03-28	17763.1294	2020-06-16	2020-11-10	2021-05-11
1809	Semi-Annual Channel (Targeted)	2018-11-13	17763.1294	2020-06-16	2020-11-10	2021-05-11
1803	Semi-Annual Channel	2018-07-10	17134.1553	2020-06-16	End of service	2020-11-10
1803	Semi-Annual Channel (Targeted)	2018-04-30	17134.1553	2020-06-16	End of service	2020-11-10

Windows 10 release information panel

6. To undo the specified version of the target feature update, select **Not Configured** or **Disabled** , click **OK** and go to step 7 below. **Not Configured** is the default setting.



Select Not Configured or Disabled

7. When done, you can close the Local Group Policy Editor.

## Specify the updated version of the target feature using the REG and Registry Editor files

**Note :** This option will only work in Windows 10 version 1803 and above.

1. Follow step 2 (to specify), step 3 (change the version to specify) or step 4 (undo - default) below, depending on what you want to do.

2. To specify the updated version of the target feature with the REG file:

A) Download the Specify\_target\_Feature\_Update\_version\_to\_1903.reg file.

(Contents of file.reg for reference)

### Code:

Windows Registry Editor Version 5.00 [HKEY\_LOCAL\_MACHINE\SOFTWARE\Policies\Microsoft\WindowsUpdate\WindowsUpdate] (REG\_DWORD) 0x00000000

Or file Specify\_target\_Feature\_Update\_version\_to\_1909.reg.

(The content of the .reg file for reference)

## Code:

```
Windows Registry Editor Version 5.00 [HKEY_LOCAL_MACHINE\SOFTWARE\Policies\Microsoft\WindowsUpdate
```

Or file Specify\_target\_Feature\_Update\_version\_to\_2004.reg.

(The content of the .reg file for reference)

## Code:

```
Windows Registry Editor Version 5.00 [HKEY_LOCAL_MACHINE\SOFTWARE\Policies\Microsoft\WindowsUpdate
```

B) Save the .reg file to the desktop.

C) Double click on the downloaded .reg file to merge it.

D) When prompted, click **Run> Yes (UAC)> Yes> OK** to approve the merge.

E) Now, you can delete the downloaded .reg file if you want.

**Note :** You can follow step 3 below if you want to change the version to what you want to specify instead.

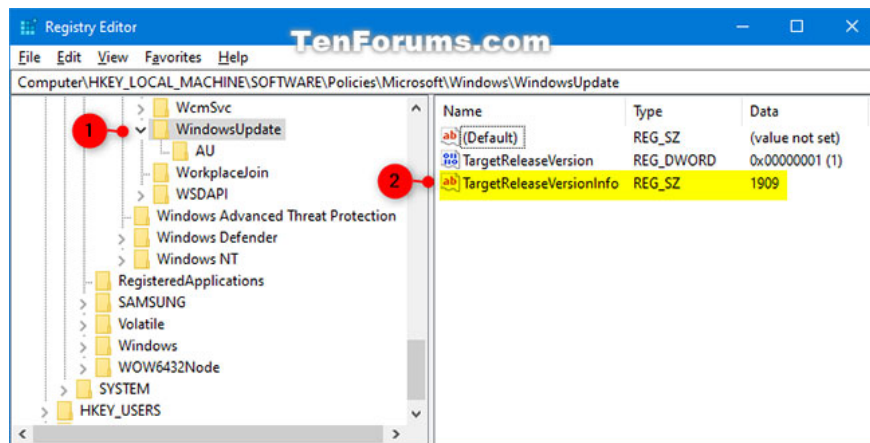
3. To change the designation of the target feature update version:

A) Follow step 2 to add the necessary registry keys and values ??for this.

B) Press the Win+ keys R to open the **Run** dialog , enter **regedit** into **Run**, and click **OK** to open Registry Editor.

C) Navigate to the key below in the left pane of the Registry Editor.

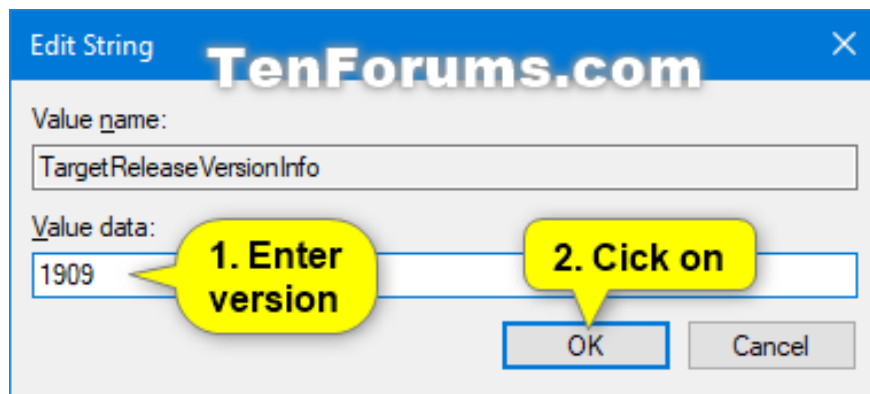
HKEY\_LOCAL\_MACHINE\SOFTWARE\Policies\Microsoft\Windows\WindowsUpdate



Navigate to the left key of Registry Editor

D) To the right of the **WindowsUpdate** key , double-click the string value of **TargetReleaseVersionInfo** (**REG\_SZ**) to modify it.

E) Enter the version (e.g. "1909") you want to specify in the **Value data** box and click **OK**.



Enter the version you want to specify in the Value data box  
F) You can now close Registry Editor.

4. To undo the designation of the target feature update version:

A) Download the Undo\_specify\_target\_Feature\_Update\_version.reg file.

(The content of the .reg file for reference)

**Code:**

```
Windows Registry Editor Version 5.00 [HKEY_LOCAL_MACHINE\SOFTWARE\Policies\Microsoft\WindowsUpdate\AU]
```

B) Save the .reg file to the desktop.

C) Double click on the downloaded .reg file to merge.

D) When prompted, click **Run> Yes (UAC)> Yes> OK** to approve the merge.

E) Now, you can delete the downloaded .reg file if you want.

You finished reading the article "**How to specify the target feature update version in Windows 10**" edited by the [TipsMake](#) team. We hope this article has provided you with many useful tech tips and tricks. You can search for similar articles on tips and guides. Thank you for reading and for following us regularly.