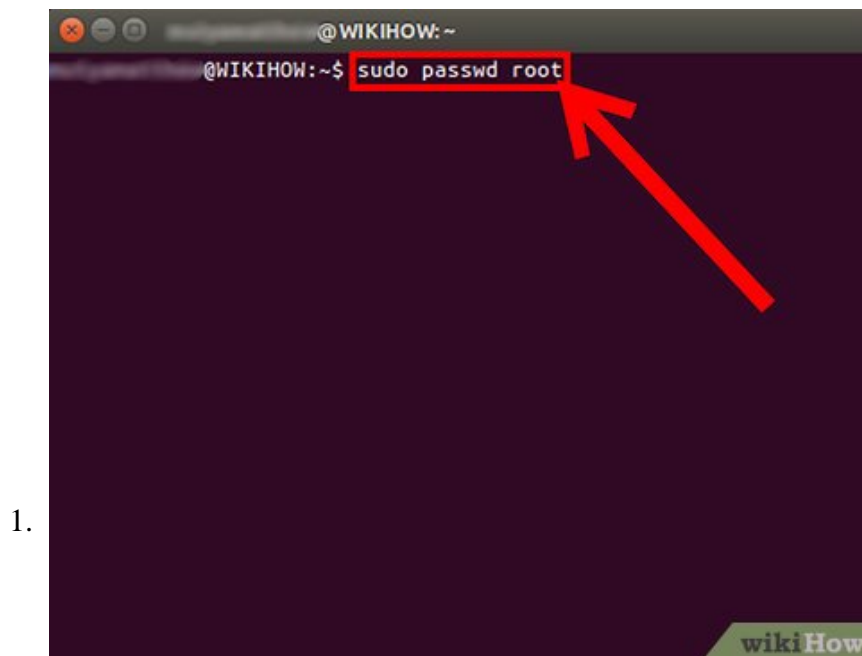


# How to Solve Incorrect Password ...Try Again Error in Ubuntu

This short article will show you how solve 'Incorrect password ...try again' error in Ubuntu 13.04 Raring Ringtail. You get this error mostly when you trying to run some software on your system that need root password. Why is That? It's...

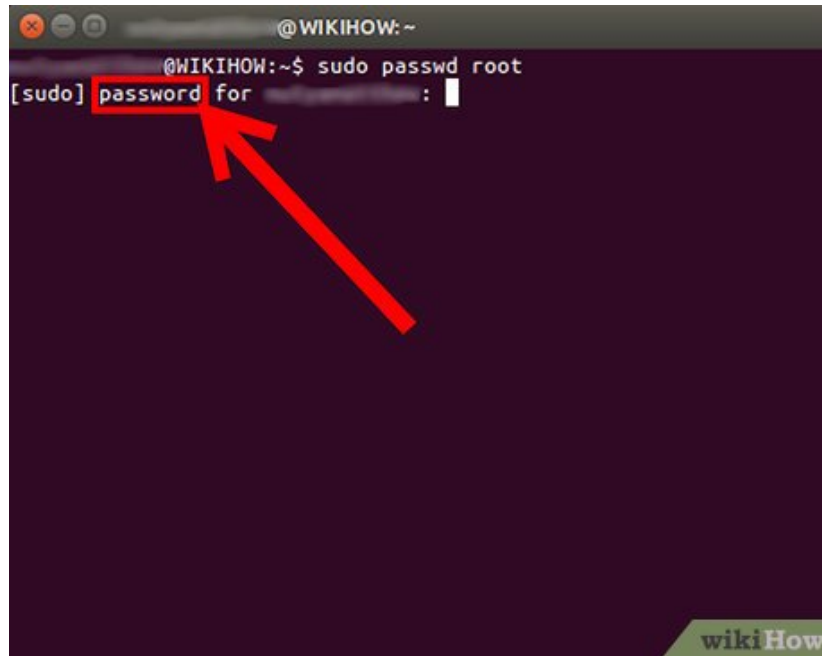
Method 1 of 1:

## Enable Root Account in Ubuntu



To enable your root account, you need to type following command to the Terminal (press **Ctrl+Alt+T** on your keyboard) or use **copy/paste method**: `sudo passwd root` (then hit Enter)

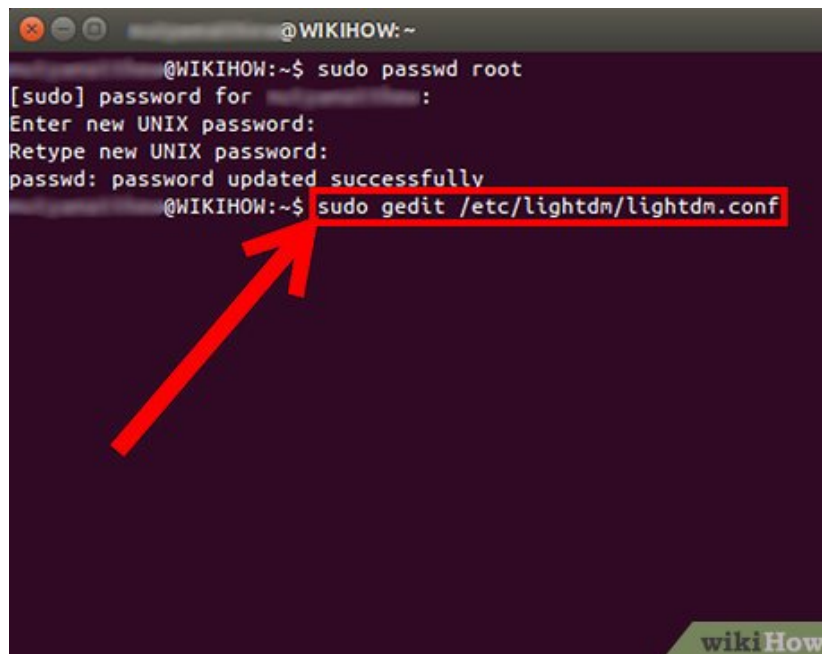
2.



```
@WIKIHOW:~  
@WIKIHOW:~$ sudo passwd root  
[sudo] password for root: 
```

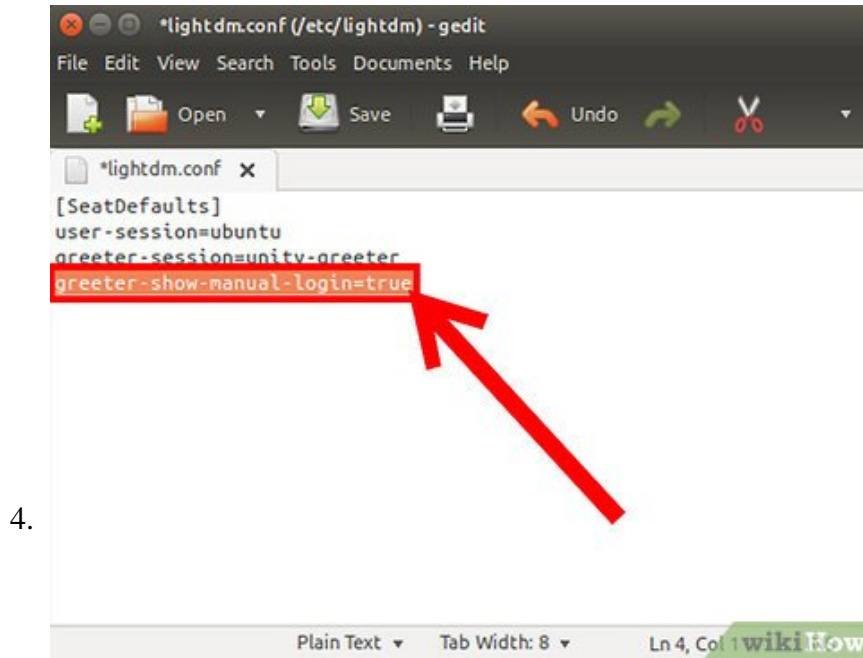
**When it asks you for password, don't be confused.** The password is that one, which you're using in the Login Screen. Password does not show up in the terminal when you type it. Just type your password and hit Enter. You will maybe prompt to enter user password for twice, so do that. If your password was entered correctly, the action will continue.

3.

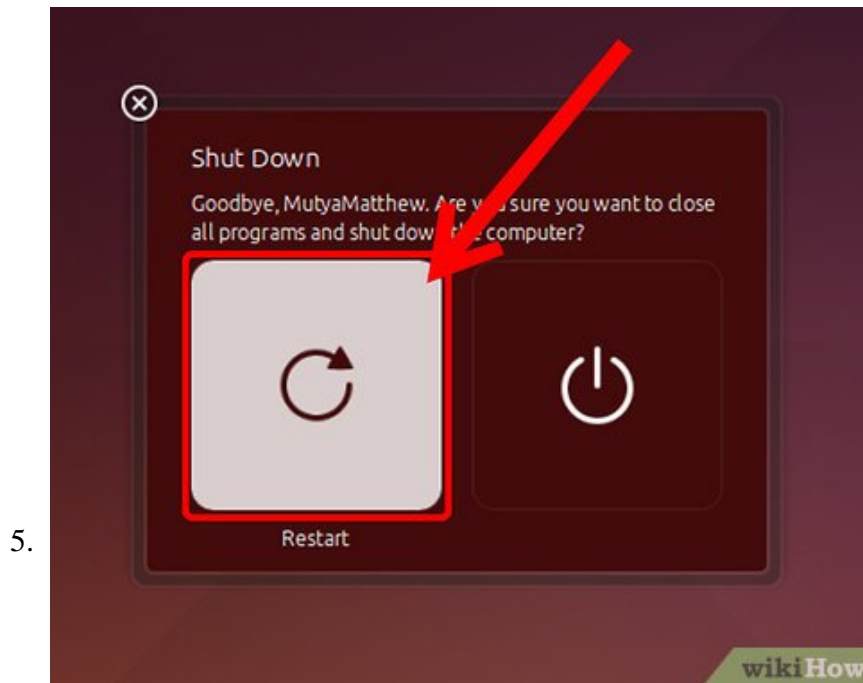


```
@WIKIHOW:~$ sudo passwd root  
[sudo] password for root:   
Enter new UNIX password:  
Retype new UNIX password:  
passwd: password updated successfully  
@WIKIHOW:~$ sudo gedit /etc/lightdm/lightdm.conf
```

**After that, you will need to configure LightDM to allow login as root account in the Login Screen.** To do that, you need to type following command to the Terminal to run LightDM: `sudo gedit /etc/lightdm/lightdm.conf` (then hit Enter)



Now, when LightDM is opened, you need to add this line to the end: greeter-show-manual-login=true (then save it and close LightDM).



The last step is to reboot your system and login with username and password you that you was set previously. Now it will works. If you will want to disable your root account, then you need to type following command to the Terminal (press Ctrl+Alt+T on your keyboard) or use copy/paste method: sudo passwd -l root (then hit Enter)

You finished reading the article "**How to Solve Incorrect Password ...Try Again Error in Ubuntu**" edited by the [TipsMake](#) team. We hope this article has provided you with many useful tech tips and tricks. You can search for similar articles on tips and guides. Thank you for reading and for following us regularly.

