

How to shut down a computer

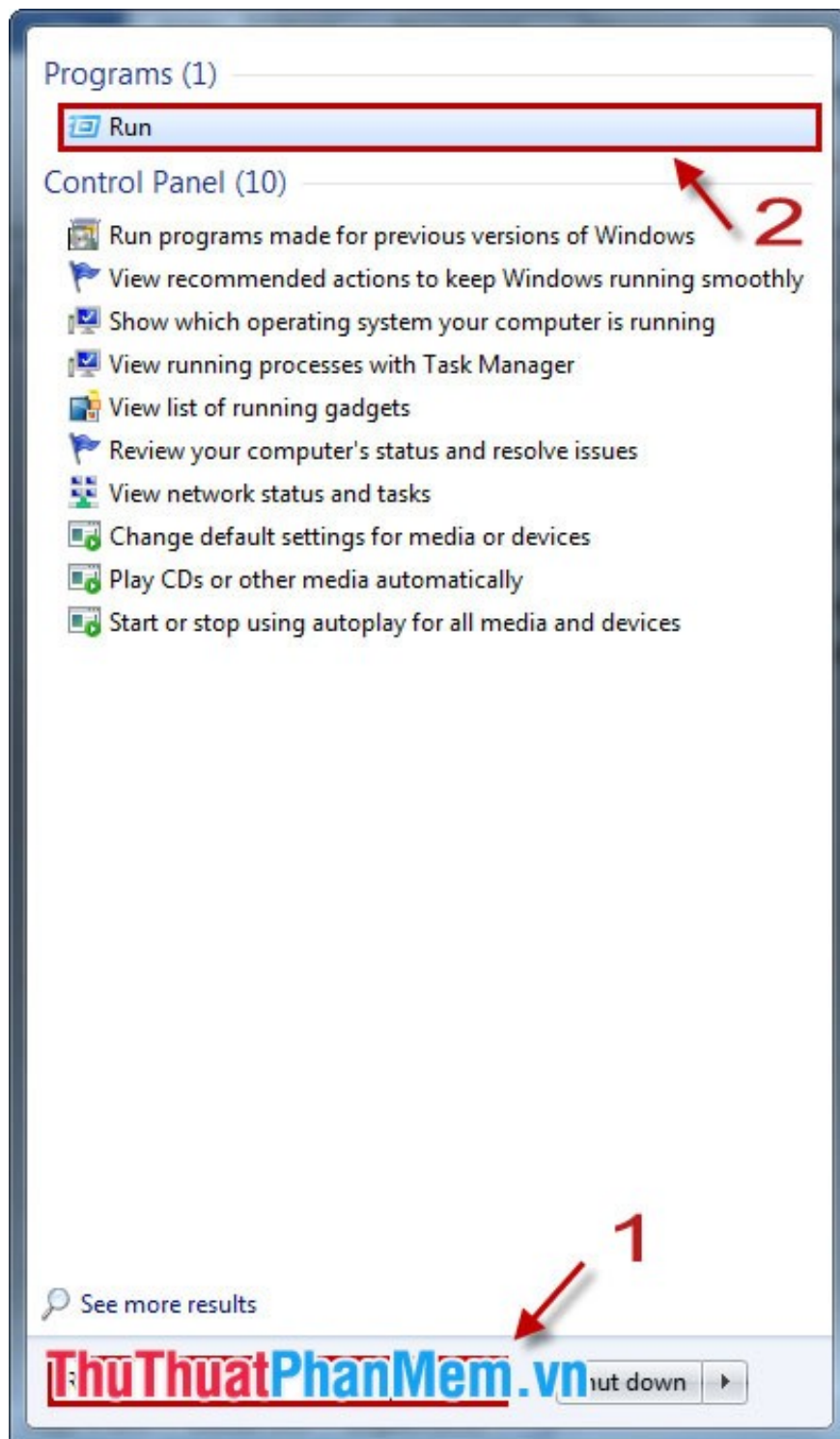
Surely everyone who has overslept did not turn off the computer, or it may have had many oversleeping while watching a movie or for various reasons, but forgot to turn off the computer. The count is still at rest after you have slept

Surely everyone who has overslept did not turn off the computer, or there may have been many times when you fell asleep watching a movie or for various reasons, forgot to turn off the computer. If you want the computer to rest after you have slept, the timer to turn off the computer is a good solution for you.

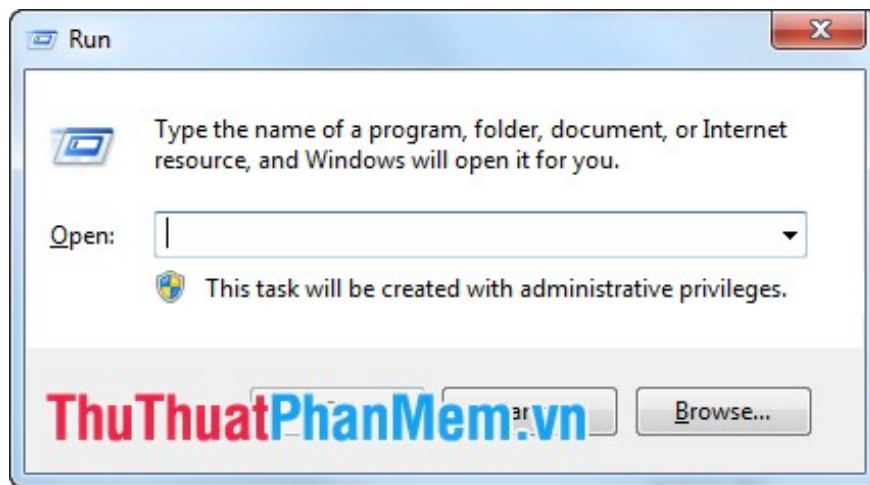
Here I will introduce you the 2 best ways to have a timer to turn off the computer, you can refer to and choose for yourself the most convenient way.

1. Timer to shutdown the computer without software (using commands directly in Windows).

Step 1: First, go to **Start** in the search box type **Run** -> Select **Run** (press **Enter**) or can press **Window + R** key combination .



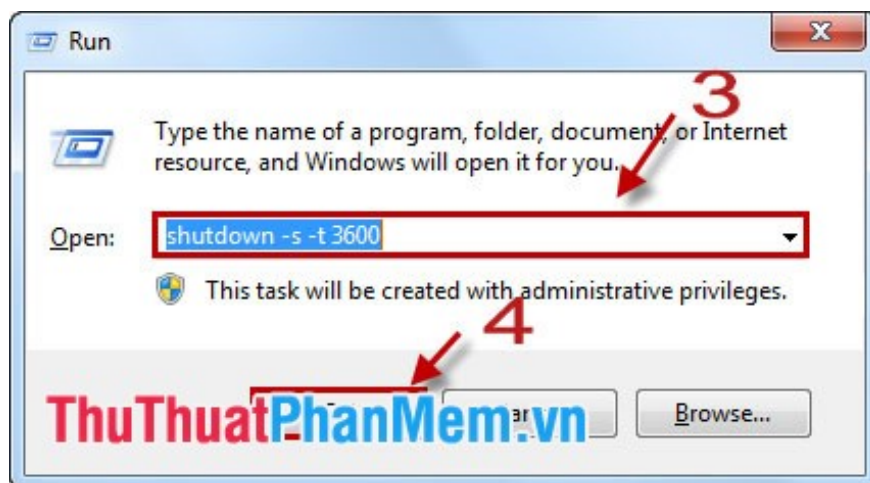
After selecting **Run** , a **Run** dialog box appears .



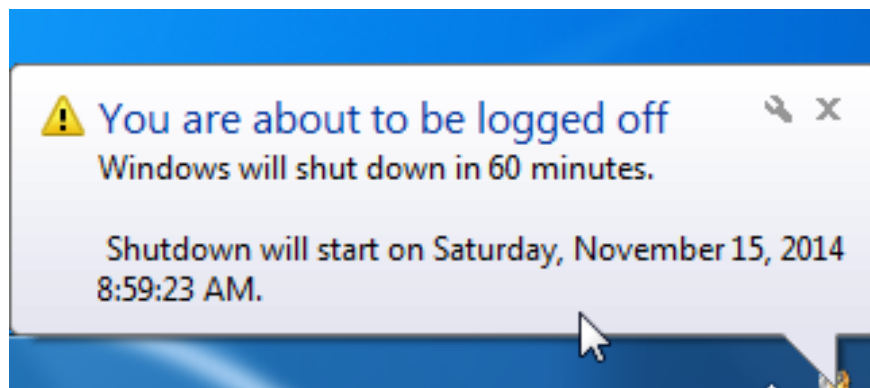
Step 2: At the **Open** dialog box **Run** the command to turn off computer timer: `shutdown -s -t 3600 -c "shutdown after 1 hour"` . Inside:

- **shutdown:** is the keyword.
- **s :** close windows (shutdown).
- **t:** symbol of time in seconds.
- **3600:** *The* time you want the computer to shut down from the moment you place the order (in seconds).
- **c:** note paragraph for notice board (usually omitting -c because it is not necessary).

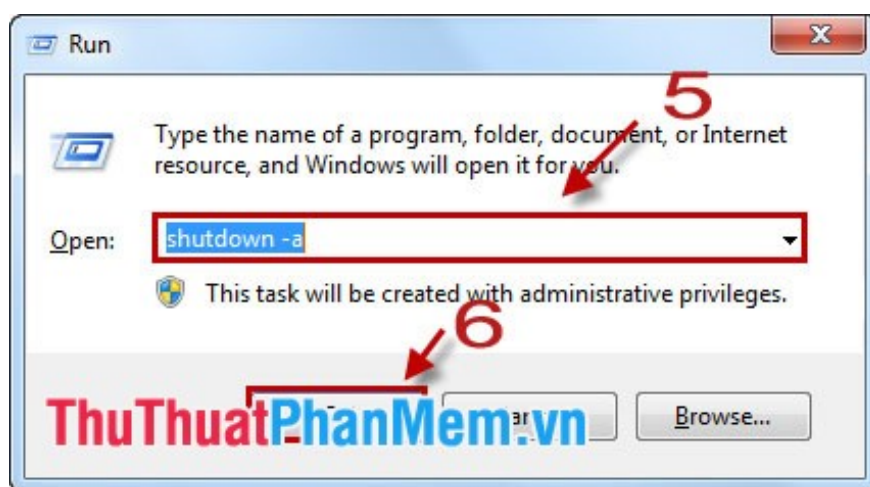
You can enter the command: `shutdown -s -t 3600` .



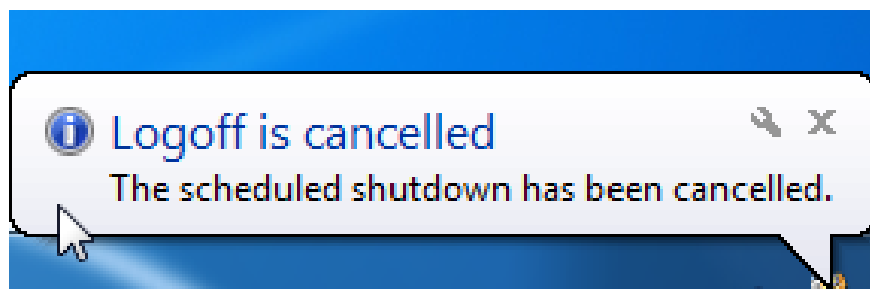
Then click **OK** . The computer will give specific notice as shown below.



Can be set to automatically start the computer with the above command replace `-t` with `-r` (r is restart) `shutdown -s -r 3600`. **Step 3:** When you do not want to shutdown, you can cancel the shutdown command. Go to **Run** and enter the command: `shutdown -a`.



Or you can open **Notepad** and enter `shutdown -a`. Then save the file with a `.cmd` or `.bat` extension (Save as type: All file, Encoding: ANSI). Every time you cancel the shutdown timer, you just need to click on the saved `.cmd` or `.bat` file. Click **OK**, the computer will issue a notice of canceling the command:



2. Use the software to schedule the computer to automatically turn off.

Currently there are many softwares that help you to schedule a simple shutdown such as:

- **Quick Shutdown:** Free software, shutdown timer, start the machine. when the **Quick Shutdown** timer is set, the success message is also displayed.

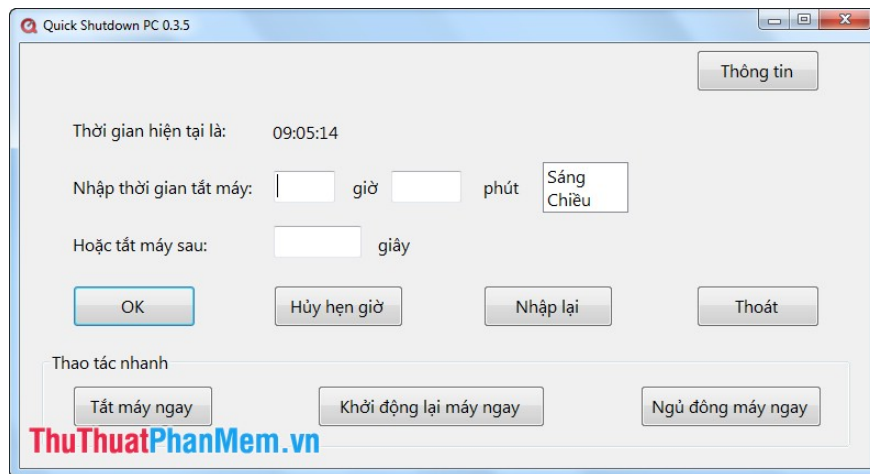
- **Counter Timer:** Free to use, there are some features such as: set the timer to automatically shutdown, restart the computer .

- **Auto shutdown:** Simple scientific interface, with the ability to turn off the computer after the number of minutes you set, or you can turn off the computer at a fixed time, minutes set by you.

- **Shutdowner:** Help you perform quick shutdown tasks including **Shutdown** , **Restart** , **Log off** or run any application program at a time specified by you.

There are also a lot of other software, below I will introduce how to use **Quick Shutdown** software to schedule automatic shutdown of the computer, this software is completely free.

Step 1: You can Download the Quick Shutdown software here. Then proceed with the normal installation. After installation, you should open the program and have a simple interface as follows:

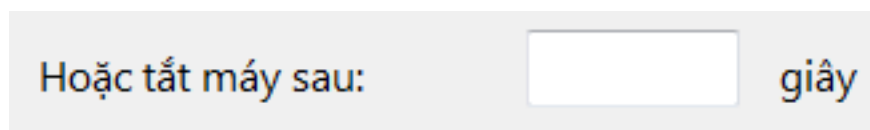


Step 2: You set the time to shutdown.

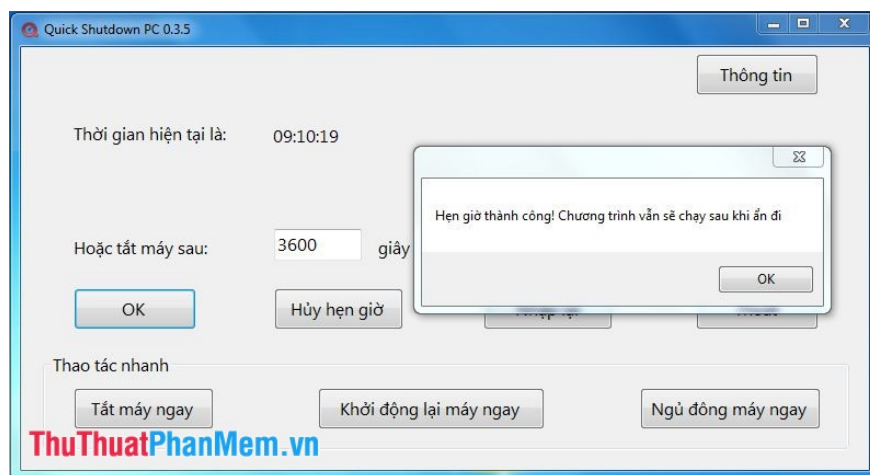
- You can enter the exact time for automatic shutdown in:



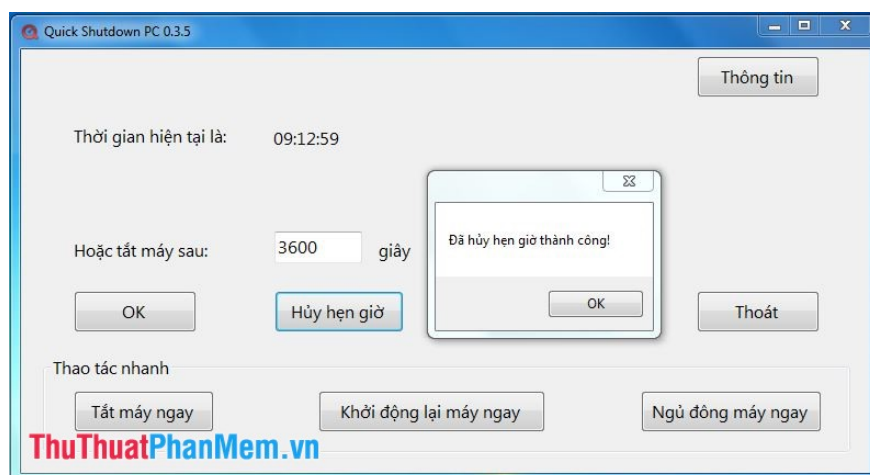
- Enter after setting how many seconds to the computer automatically shuts down.



Then click **OK** to start the program. The program will give a notice of successful installation.



Step 3: After setting the settings you want to cancel the shutdown timer you can click the **Cancel timer** button to cancel the setting.



To reset the timer, press the **Re- enter** button , the program will return to the initial interface for you to set the time.

Some quick operations of the program are also very useful, you can turn off, restart the computer directly when pressing the button on the program.

You finished reading the article "**How to shut down a computer**" edited by the [TipsMake](#) team. We hope this article has provided you with many useful tech tips and tricks. You can search for similar articles on tips and guides. Thank you for reading and for following us regularly.