

How to sharpen images using Photoshop

Taimienphi has covered the technique of sharpening images using Photoshop many times in previous articles on photo editing. In this article, Taimienphi will continue to guide you on how to use the Unsharp Mask and High Pass Sharpening tools to effectively sharpen details as desired.

You're probably familiar with Adobe Photoshop, the world's leading professional photo editing tool. If you're not yet familiar with Photoshop's interesting features, this article will be a helpful resource to enhance your skills in **Photoshop CS6** or CC versions.



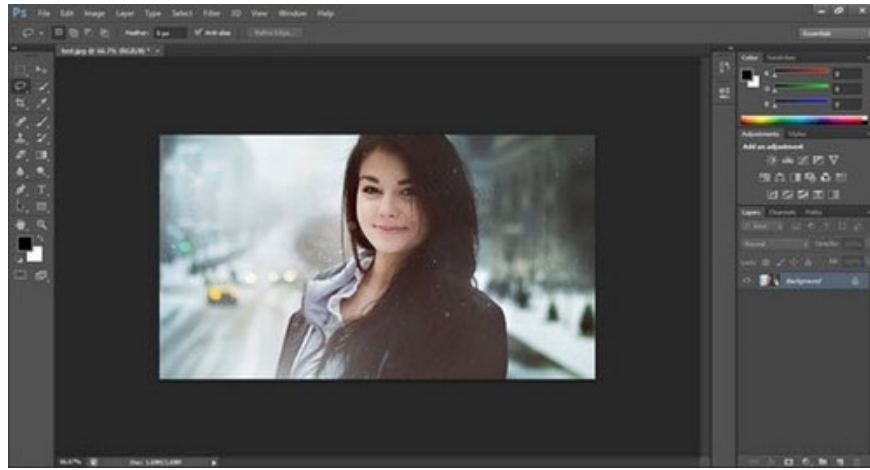
Guide to sharpening images using Photoshop

Instructions on how to sharpen images using Photoshop

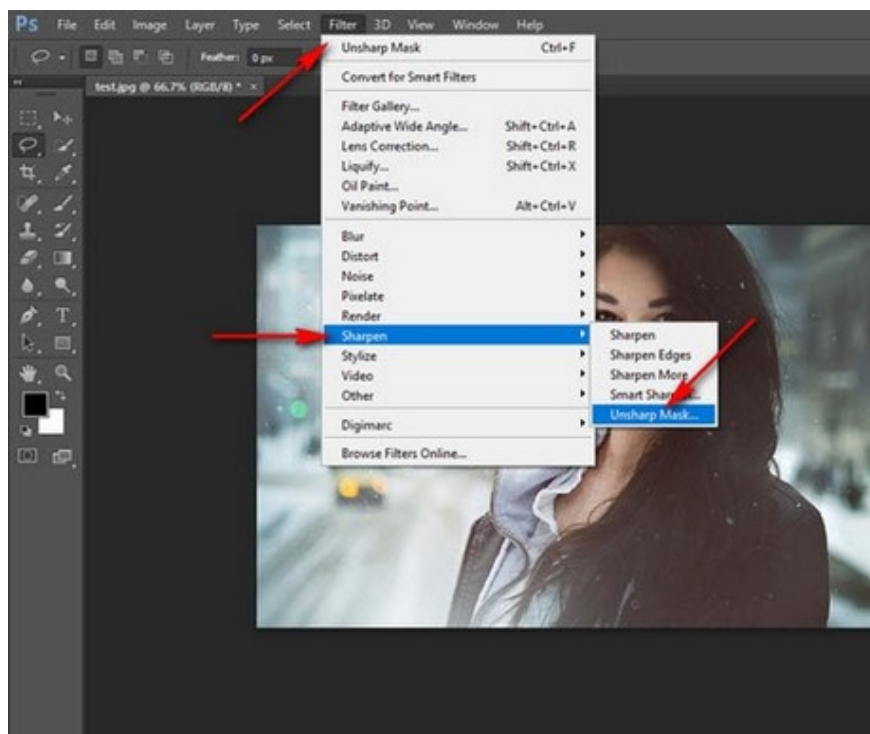
If you don't already have the world's leading photo editing software, **Adobe Photoshop** , download it here:
- Download Adobe Photoshop here: [Download Photoshop](#) .

Method 1: Using Unsharp Mask

Step 1: In Photoshop, open the image you need to sharpen and keep it as a single layer.

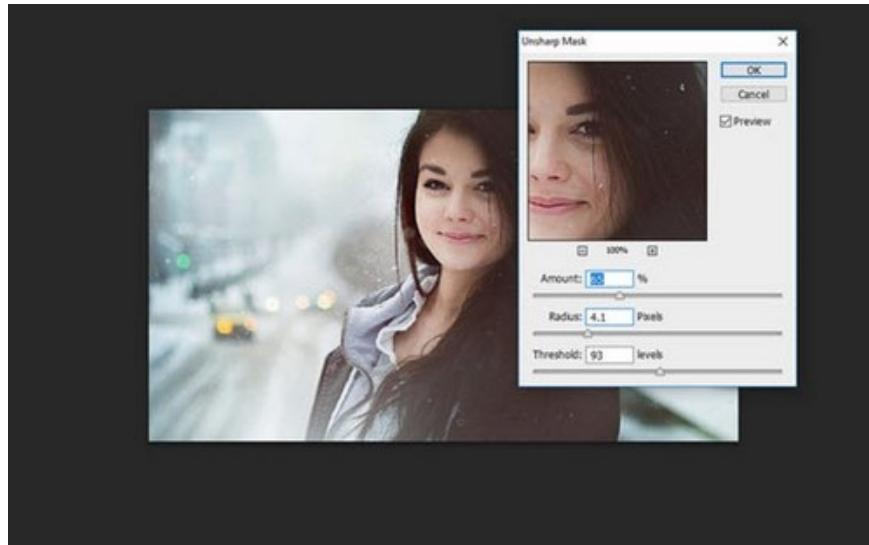


Step 2: Select the menu **Filter -> Sharpen -> Unsharp Mask**



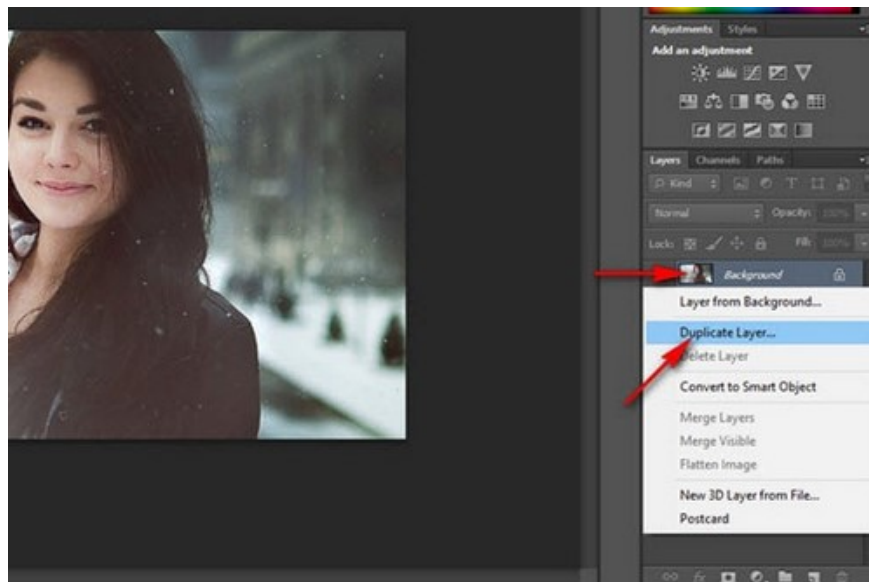
Step 3: In the Unsharp Mask window, you can adjust the image using 3 parameters:

- **Amount** : Enhances image details
- **Radius** : Adjusts the width of the halo along the edges
- **Threshold** : Determines the edge contrast value.

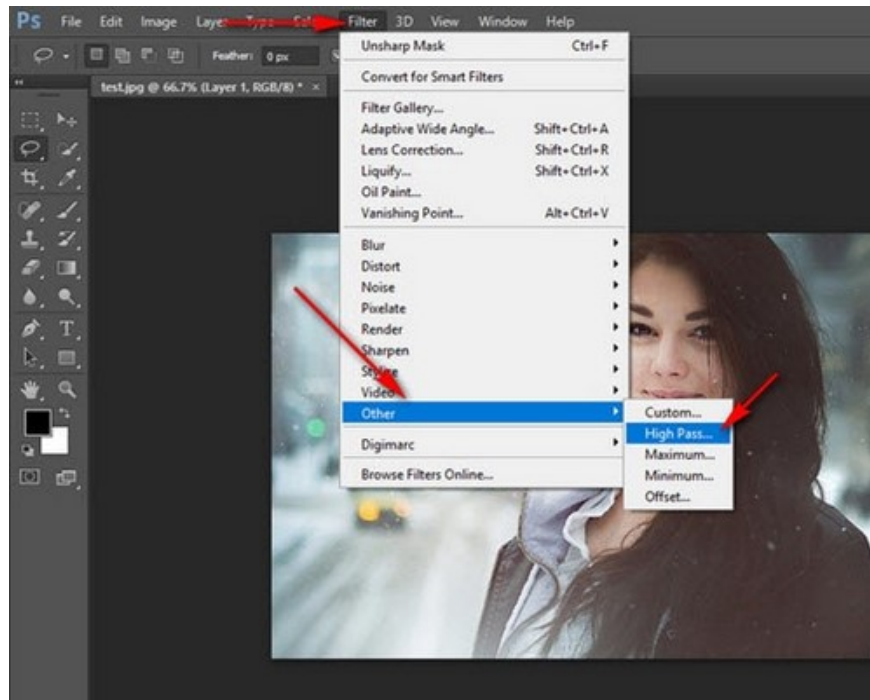


Method 2: Using High Pass Sharpening

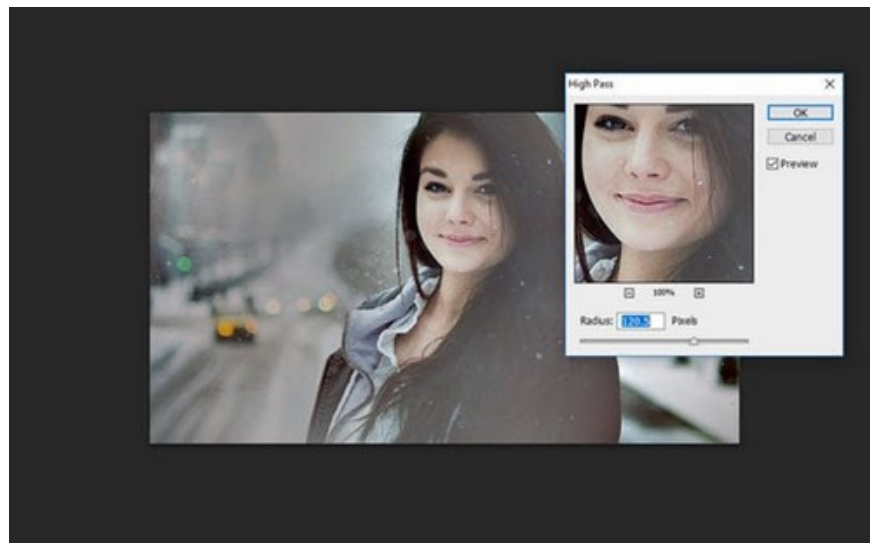
Step 1: After opening the image you want to edit in Photoshop, in the **Layers** pane, duplicate the layer by right-clicking on the Background layer and selecting **Duplicate Layer ...** or pressing the keyboard shortcut **Ctrl + J**.



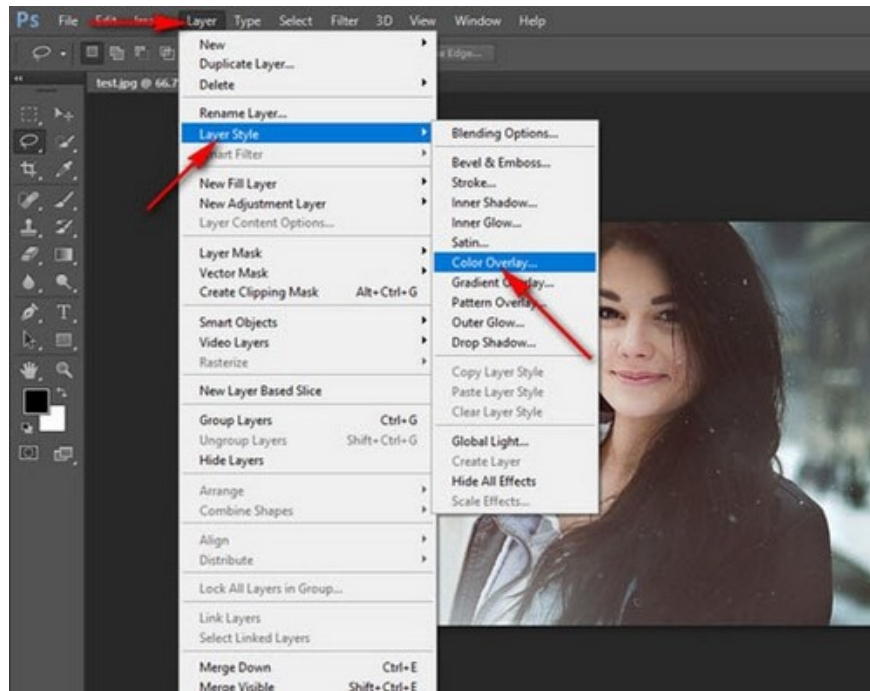
Step 2: On the second layer, select the menu **Filter -> Other -> High Pass ...**



Step 3: The High Pass window will appear, where you can adjust the details to suit your aesthetic preferences.



Additionally, you can use the Color Overlay tool to customize the background color of the image. To open the Color Overlay tool, select **Layer -> Layer Style -> Color Overlay...**



The Color Overlay tool gives you different blending modes such as Soft Light, Hard Light, Vivid Light, Linear Light, etc., and allows you to customize their color and **opacity** .

Hopefully, this article will help you create sharp images with vibrant colors. In addition, Taimienphi also guides you through many Photoshop skills, such as **separating people from the background** , or you can use Photoshop to create the currently trending animated images by following the **Photoshop animation** tutorial here.

Wishing you success!

You finished reading the article "**How to sharpen images using Photoshop**" edited by the [TipsMake](#) team. We hope this article has provided you with many useful tech tips and tricks. You can search for similar articles on tips and guides. Thank you for reading and for following us regularly.