

How to share printers in LAN on Windows, Mac, Linux

Windows, Mac or Linux computers can connect to each other, share files, and can even share a single printer if they have the same LAN.

Windows, Mac or Linux computers can connect to each other, share files with each other, and can even share a single printer if they have the same network connection .

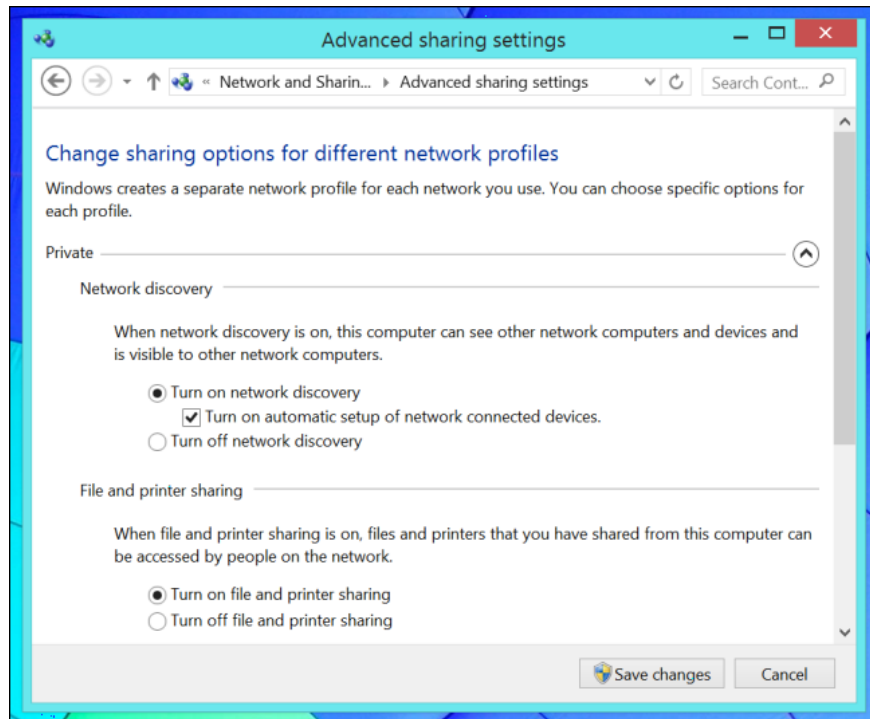


This is only really useful if you have a printer connected directly to a computer such as a USB printer. And modern wireless printers can connect to the network and share automatically, you can simply connect to that printer.

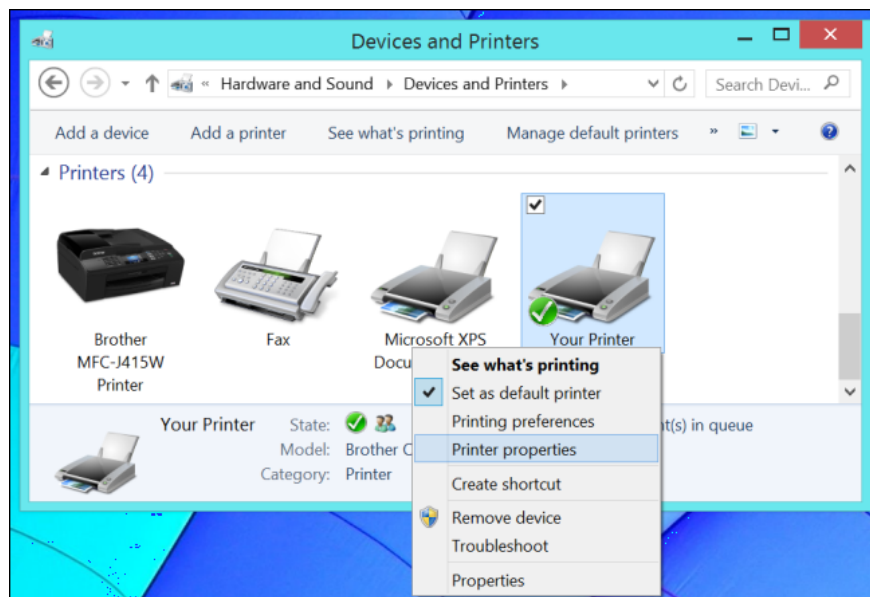
Share the printer from Windows

Similar to **file sharing** , just go to **Control Panel** , select *Network and Sharing Center* , then click on *Changed advanced sharing settings* . In this customization, navigate to the *File and print sharing group* and **check the Turn on button** .

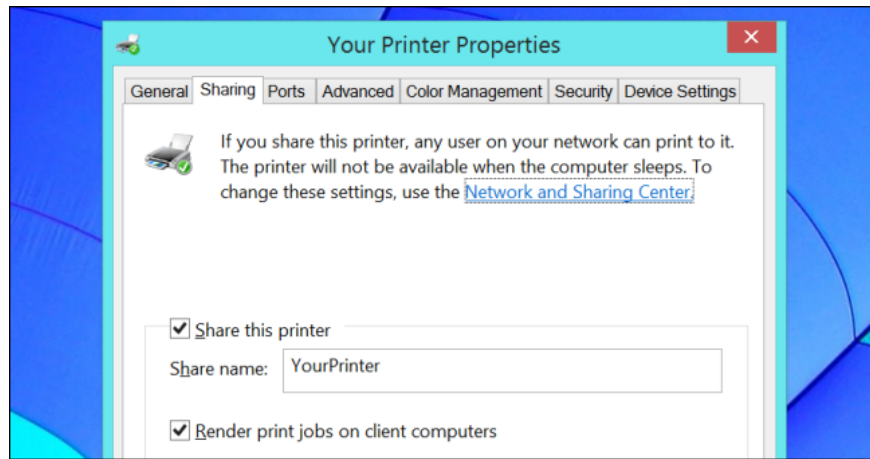
However, Mac and Linux computers cannot connect to homegroups and use sharing features like Windows, so for these machines, you must set up the printer sharing tool in an older way.



In **Control Panel 1**, pressing **Printers** displays the printer list. Then **right-click the printer** you share and choose **Printer Propertise** .

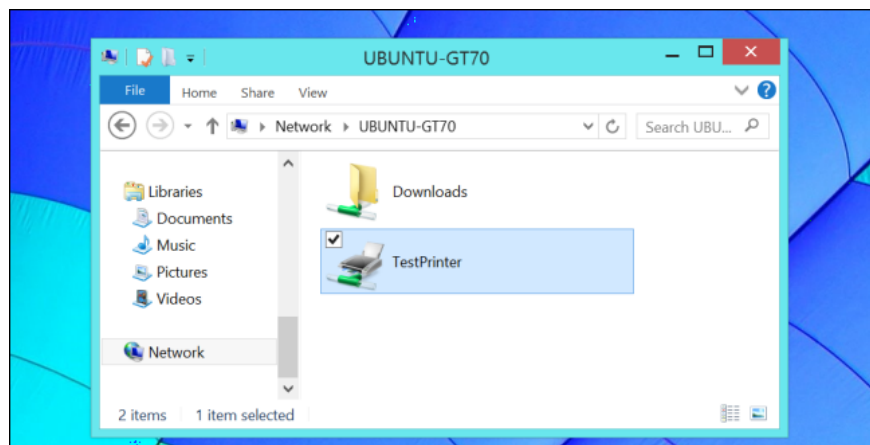


A setup window appears, click the **Sharing** tab and check the **Sharing this printer** item along with the **printer** name in the **Sharename** line.

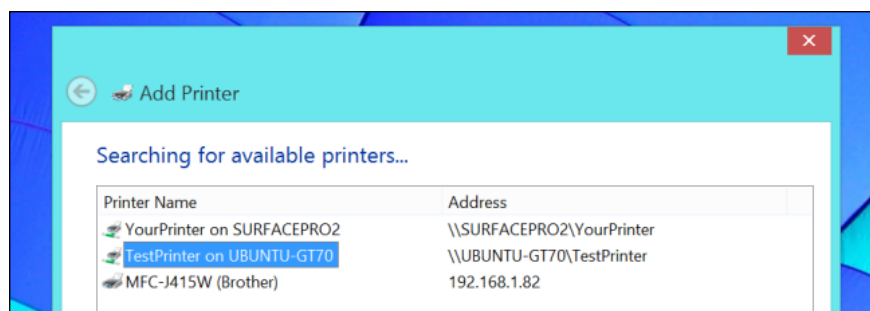


Access to the printer that has been shared by Windows

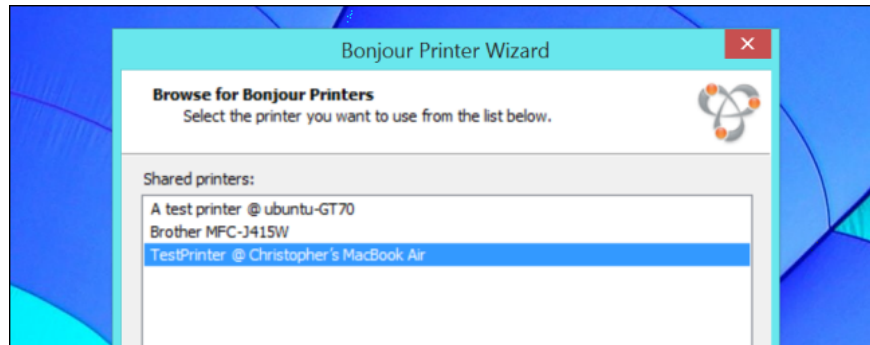
Open **Windows Explorer** or **File Explorer** and click the *Network* option, you will see a list of printers being shared with the network, now **double-click the printer** you want to access to establish connection settings. with it



You can also use the *Add Printer dialog box* in the *Devices and Printe* window, which automatically scans for shared printers near you and allows you to connect to it easily with a single click. mouse.

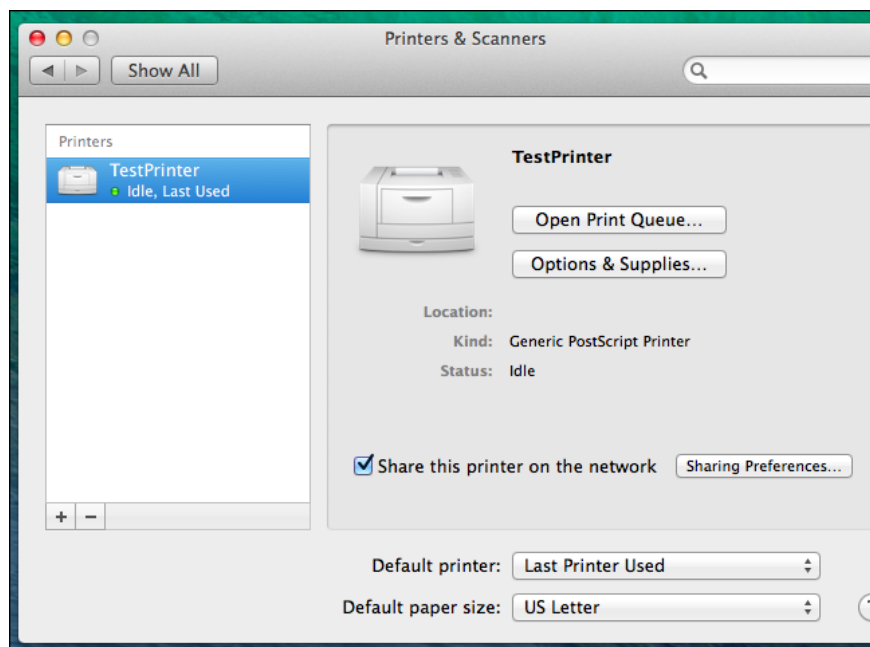


If you **share the printer from a Mac** , you'll need to install Apple's *Bonjour Print Services* for Windows and use the *Bonjour Printer Wizard* to add the printer to your Windows system.

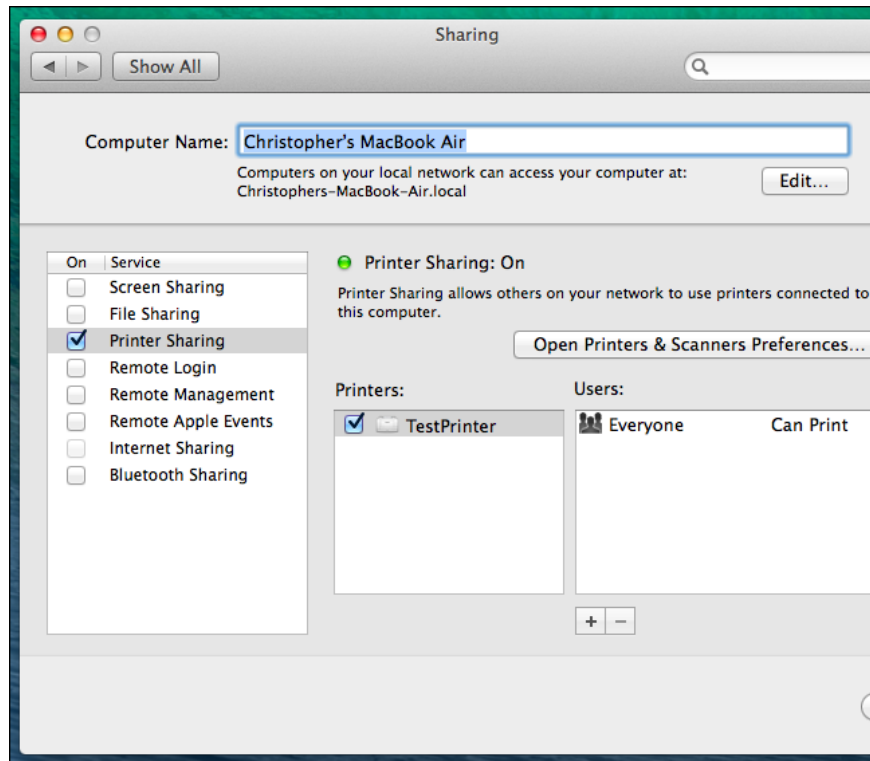


Share a printer from OS X

Click the **Apple** menu, in the *System Preferences* section, click *Printers and Scanners* . Select the printer you want to share and tick *Share this printer on the network*

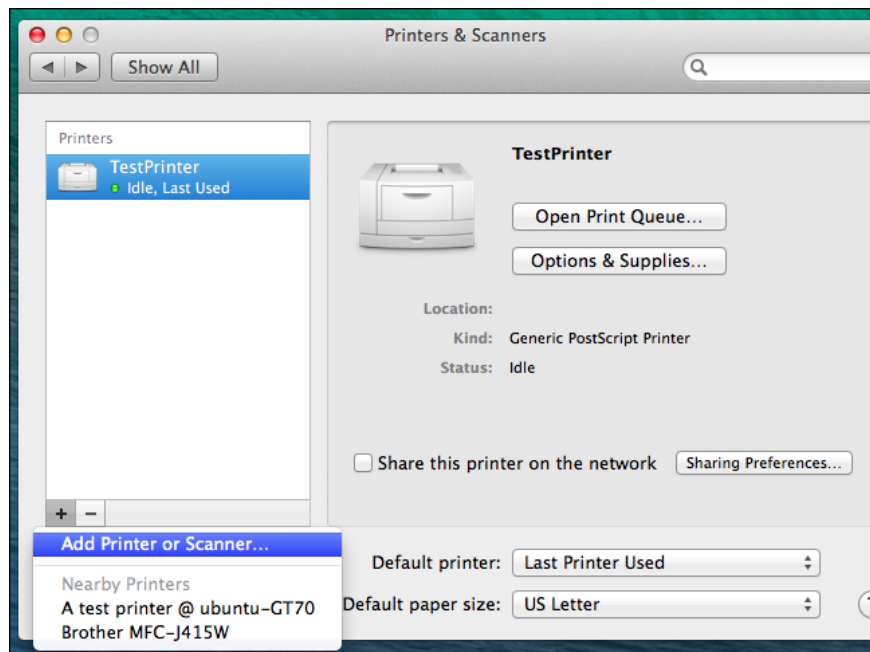


Click the *Sharing Preferences* button and check the *Printer Sharing* option

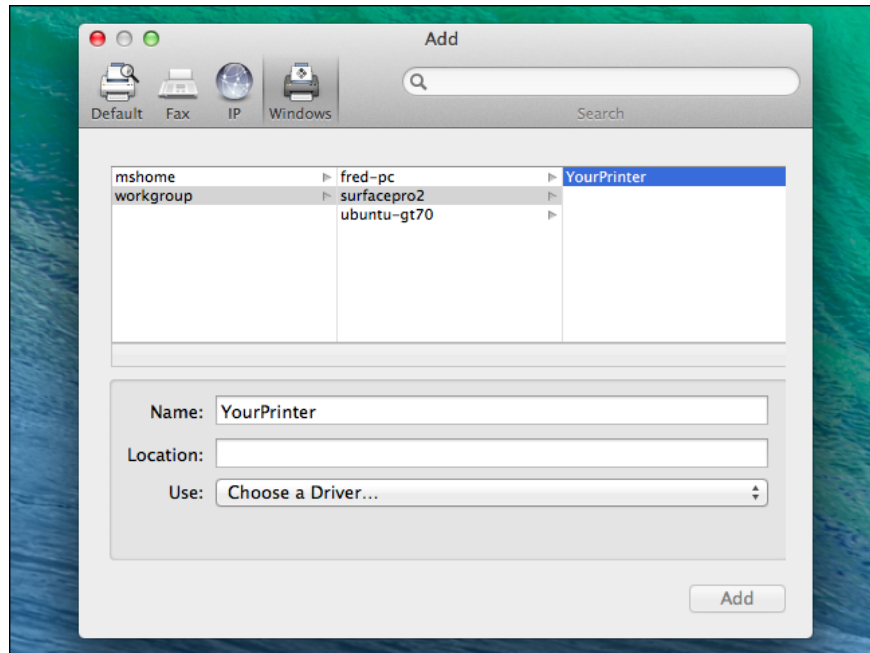


Connect to a printer shared by OS X

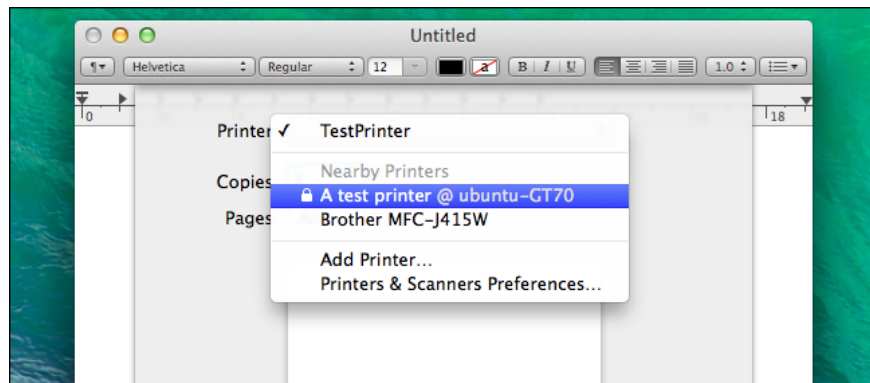
Go to *Printer and Scanners* and click on the '+' button, select *Add Printer or Scanner*. You can also add printers from the Print dialog box of any application - just click on the Printer box and select Add Printer to access the dialog box.



Then, click the **Windows** icon, select *Windows PC's workgroup* , click the name of the computer sharing the printer, select the printer's name, and then click *Add* .



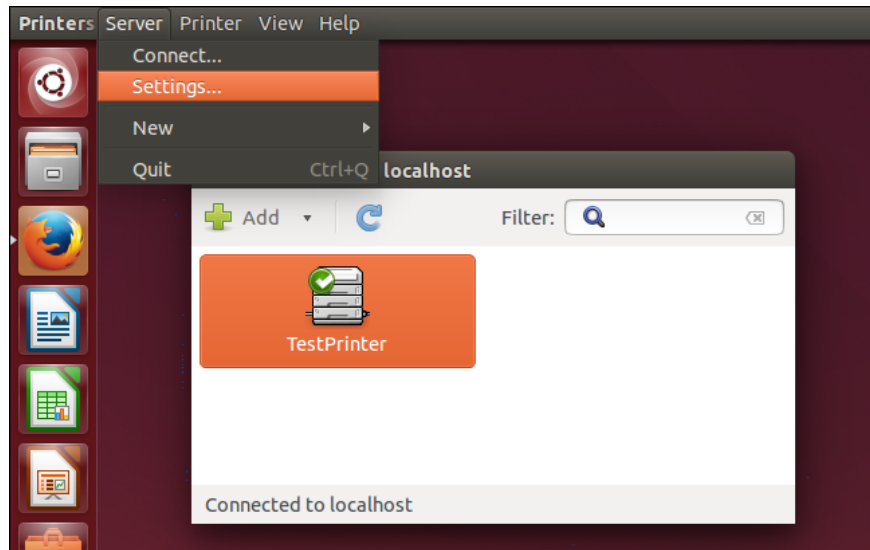
The printer shared from Mac OS will automatically search and provide as an option when you proceed to print



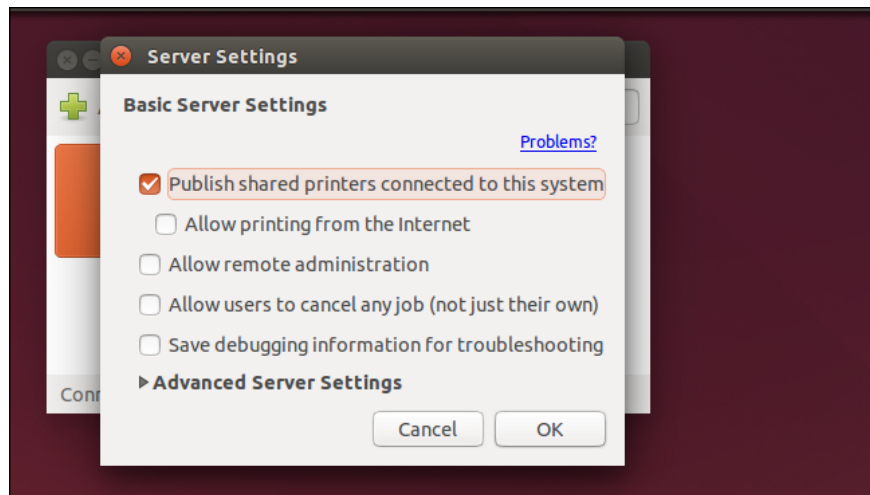
Share printer from Linux

Here we will use **Ubuntu 14.04** , if you use another distribution, the process will be the same.

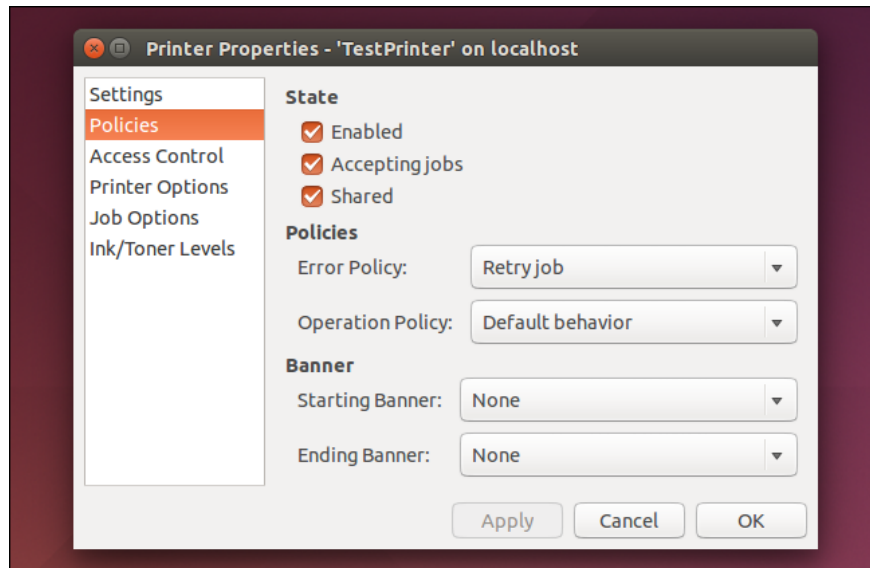
First, click the tool icon in the top bar and select *System Settings* , then click the *Printers* icon, select the **printer** to share. Continue to access **the Server** and select *Settings*



A custom window appears, check **the box *Publish shared printers connectd to this system*** and **click OK**

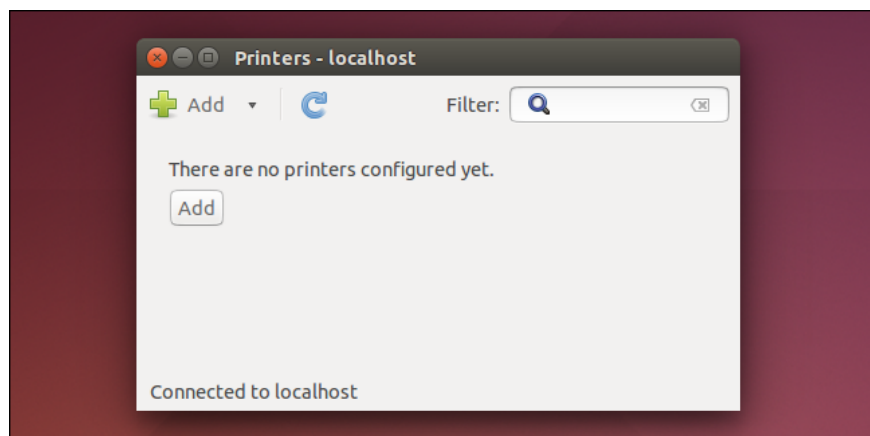


Back in the *Printers* section, **right-click the printer and select *Propertises*** , continue to click *Policies* and check the *Shared* tab so the printer can be shared.

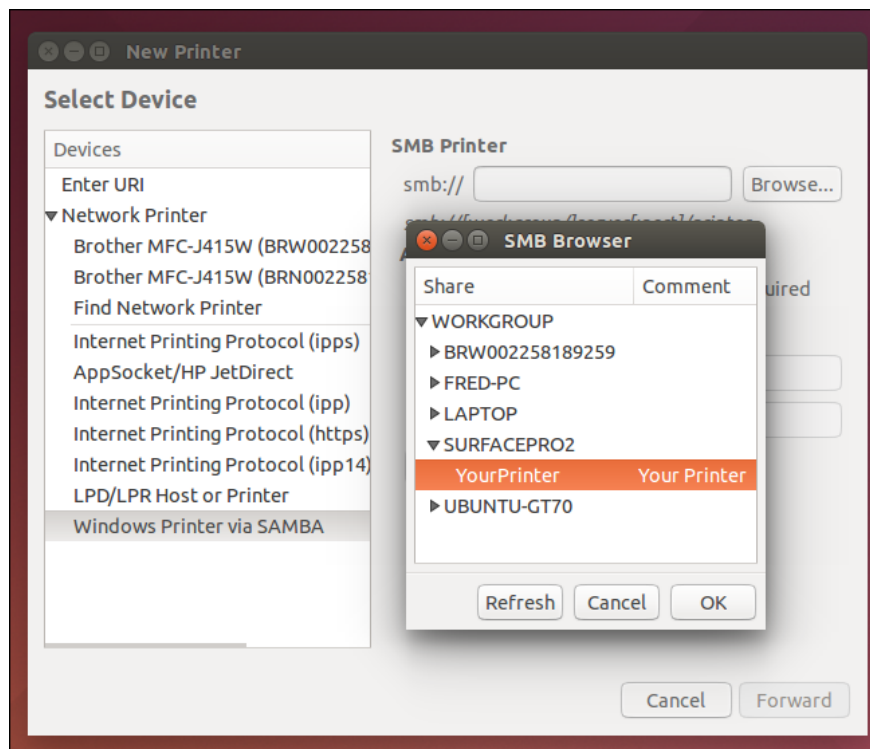


Connect to a printer shared by Linux

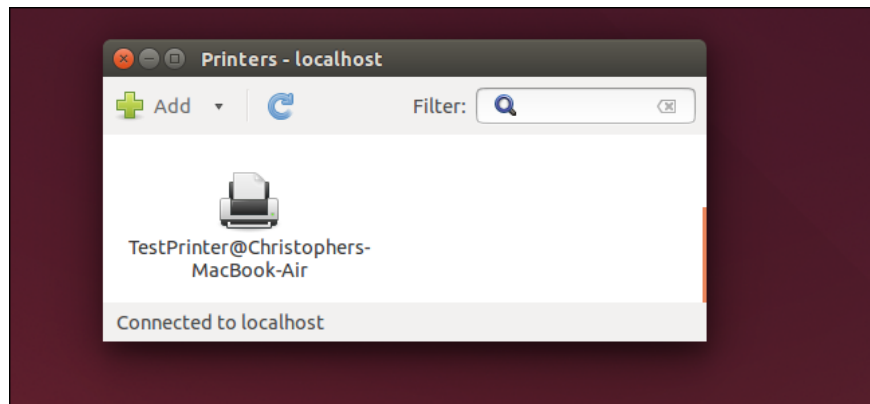
Open Ubuntu's *System Setting* window and click on the *Printers* icon. Then, **click the Add button** to add a new printer.



Expand the *Network Printer* section and select *Windows Printer* via SAMBA, then click *Browse* . You can also find printers connected to different computers on the same network. But sometimes you will need to install drivers so your computer can recognize the printer.



In addition, Ubuntu can find shared printers through the Mac's **Bonjour** service and automatically connect to them.



Modern **printers often have built-in Wi-Fi** so they can be shared with **any computer, phone or tablet easily** without having to follow the sharing steps above. Wi-Fi printers are an ideal choice if you want to share printers quickly and conveniently.

You finished reading the article "**How to share printers in LAN on Windows, Mac, Linux**" edited by the [TipsMake](#) team. We hope this article has provided you with many useful tech tips and tricks. You can search for similar articles on tips and guides. Thank you for reading and for following us regularly.