

How to share a printer via Lan network - So that 2 or more computers can print at the same time

TipsMake.com will guide you how to share a printer via a local LAN so that multiple computers can print documents. The article has 2 steps, 1 is to share the printer with another device and 2 is to connect to the shared printer.

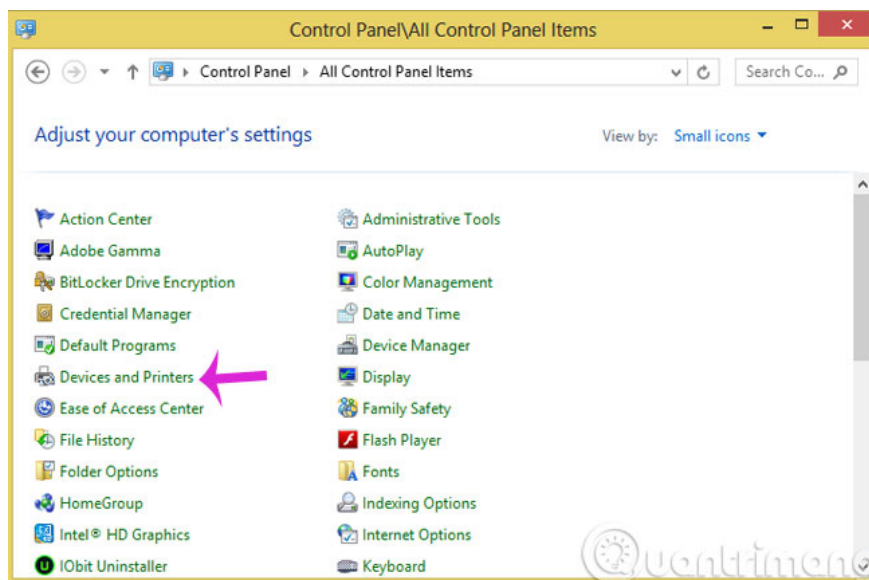
In the daily work of office workers, they often have to print many different documents for meetings or customer contact, but each office usually only has 1 printer. Therefore, each printing will take a lot of time, especially if you have to print in large quantities. Therefore, today, TipsMake.com will guide you how to share a printer via a local LAN so that multiple computers can print documents. The article has 2 steps, 1 is to share the printer with another device and 2 is to connect to the shared printer, please refer to it.

Note: First, you need to connect 2 computers together via Lan network and the printer will be plugged into one of the 2 computers. TipsMake.com recommends that you plug the printer into the computer used for printing the most, with the other machine only printing when the main machine is activated. At the same time, install printer drivers for computers on the network.

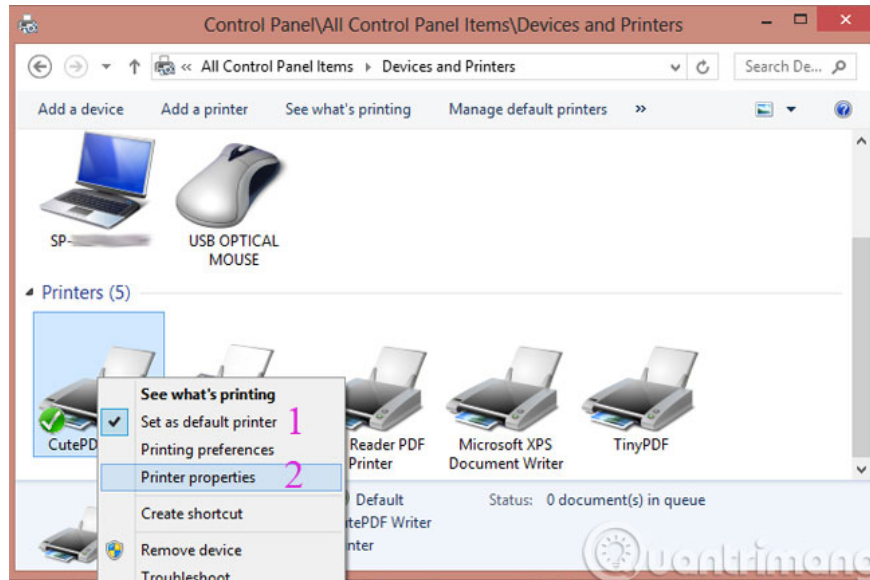
Step 1: Share the printer via LAN with another computer

This operation will be performed on the computer that is connected to the printer.

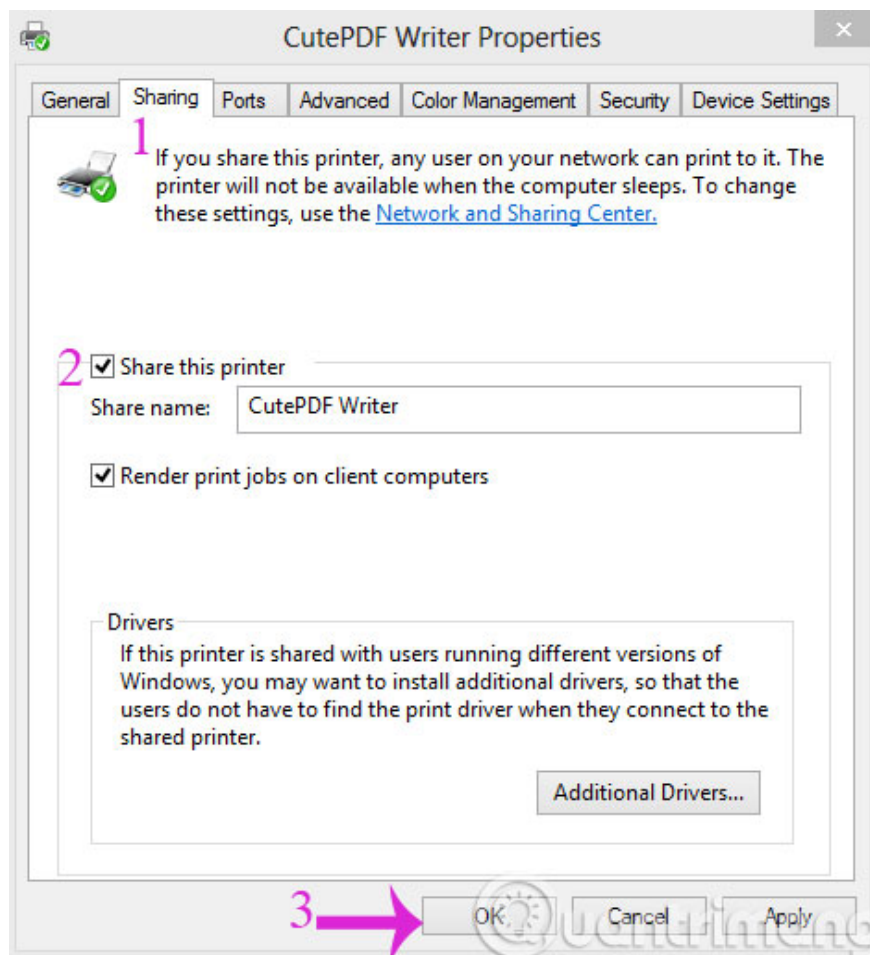
1. Go to **Control Panel** and select **Devices and Printers**



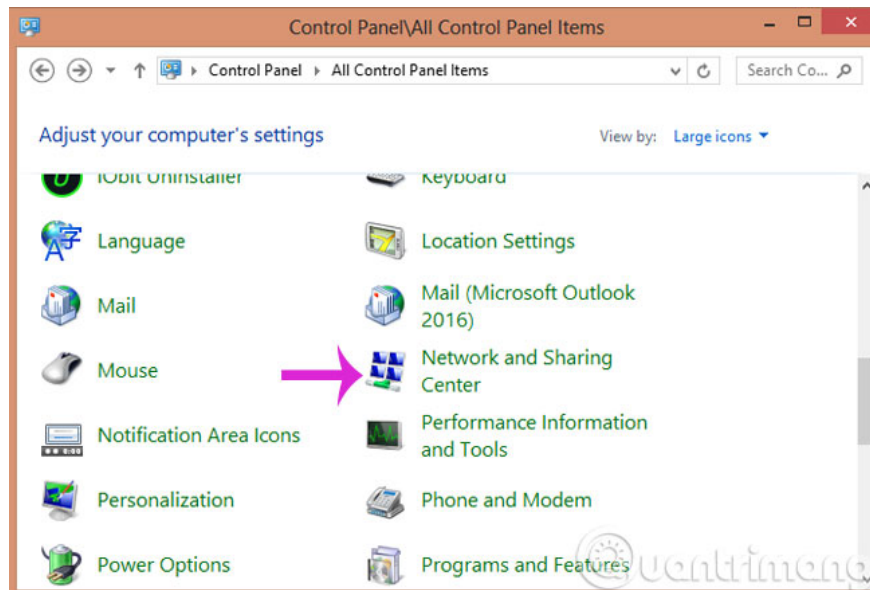
2. Next, check the **Set as default printer** line and click **Printer properties**



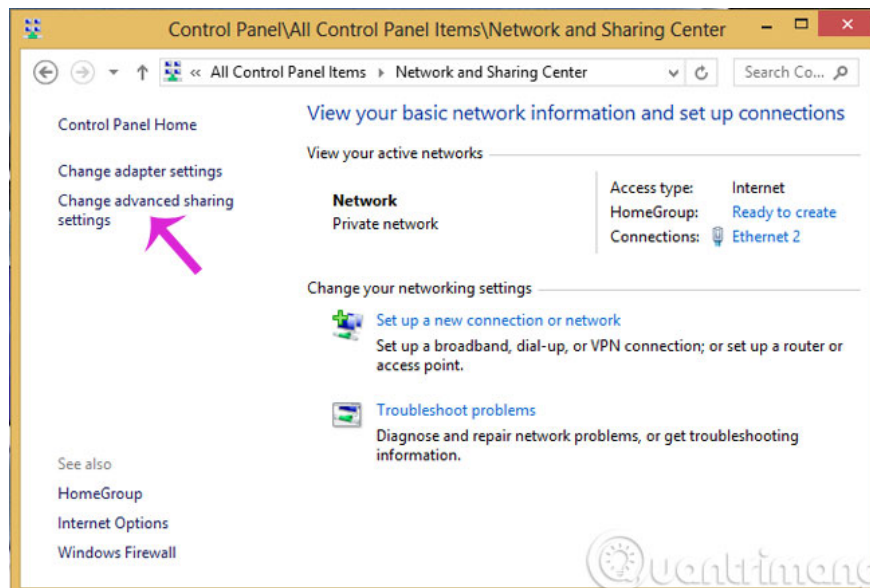
3. In the new dialog box that opens, select the **Sharing** tab and then check the **Share this printer** line . Then click **OK**



4. Return to **Control Panel** , click **Network and Sharing Center**




5. Click **Change advanced sharing settings**




6. Check the numbered options below

Change sharing options for different network profiles


Windows creates a separate network profile for each network you use. You can choose specific options for each profile.

Private (current profile) 

Network discovery 


When network discovery is on, this computer can see other network computers and devices and is visible to other network computers.

1 Turn on network discovery
 Turn on automatic setup of network connected devices.
 Turn off network discovery

File and printer sharing 


When file and printer sharing is on, files and printers that you have shared from this computer can be accessed by people on the network.


2 Turn on file and printer sharing
 Turn off file and printer sharing

HomeGroup connections 

Typically, Windows manages the connections to other homegroup computers. But if you have the same user accounts and passwords on all of your computers, you can have HomeGroup use your account instead.

3 Allow Windows to manage homegroup connections (recommended)
 Use user accounts and passwords to connect to other computers

Guest or Public 

All Networks 

7. Scroll down to the **Password protecting sharing** section and then check the **Turn off password protected sharing** option . Then, click **Save changes**

File sharing connections 

Windows uses 128-bit encryption to help protect file sharing connections. Some devices don't support 128-bit encryption and must use 40- or 56-bit encryption.

Use 128-bit encryption to help protect file sharing connections (recommended)
 Enable file sharing for devices that use 40- or 56-bit encryption

Password protected sharing 

When password protected sharing is on, only people who have a user account and password on this computer can access shared files, printers attached to this computer, and the Public folders. To give other people access, you must turn off password protected sharing.

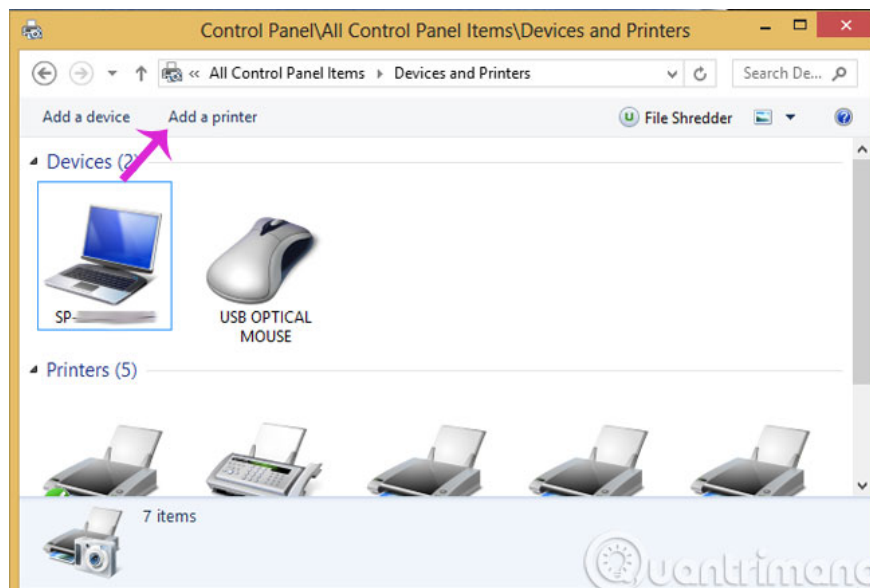
Turn on password protected sharing
1 Turn off password protected sharing

2   

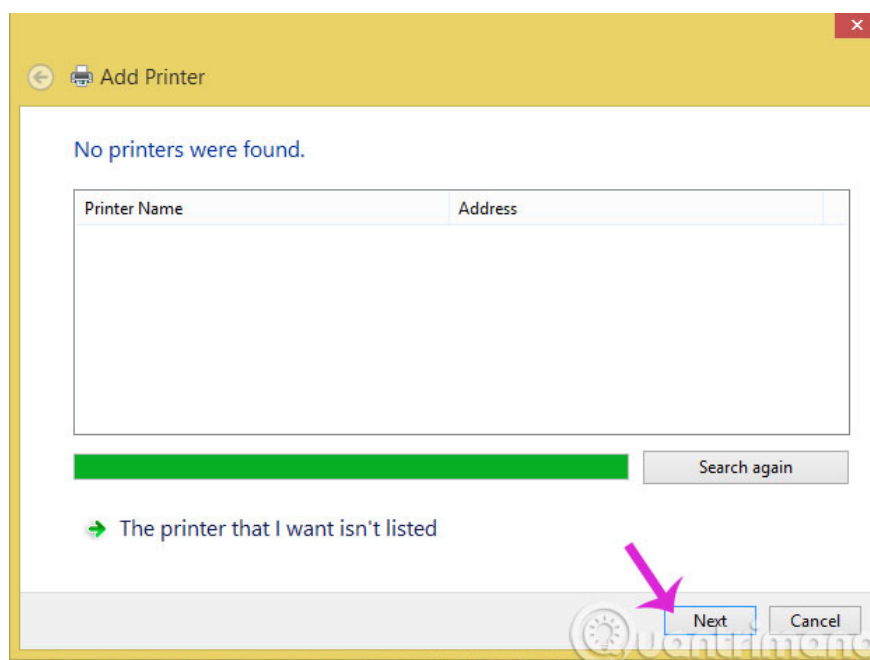
Step 2: Access the shared printer on the LAN

This operation will be performed on the computer where the document needs to be printed.

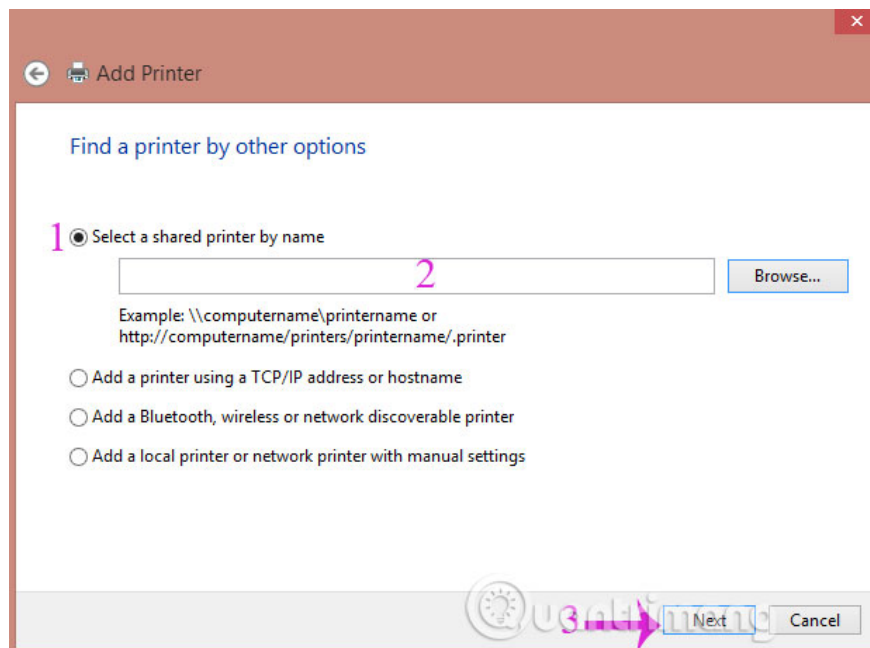
Go to **Control Panel > Devices and Printers** and click **Add a Printer**



In the window that appears, select **Add a network, Wireless or Bluetooth printer** . When the following window appears, select **The printer that I want isn't listed** .



Please check the **Select a shared printer by name** option and select the correct computer name that shared the printer and then click **Next** to finish.



In addition to adding a printer above, if you know the IP address of the computer sharing the printer, you can do the following, press Windows + R key to open the RUN window, enter the IP address of the computer connecting to the printer. Go to > **OK** .

A window appears with a list of devices shared by the other computer. Select the correct printer you need, double-click the left mouse button (or right-click and select Connect) to connect to the printer.

Above is how to share a printer on a LAN and how to connect to a shared printer. Hopefully this article will help you in connecting the printer to the computer.

Good luck!

You finished reading the article "**How to share a printer via Lan network - So that 2 or more computers can print at the same time**" edited by the [TipsMake](#) team. We hope this article has provided you with many useful tech tips and tricks. You can search for similar articles on tips and guides. Thank you for reading and for following us regularly.