

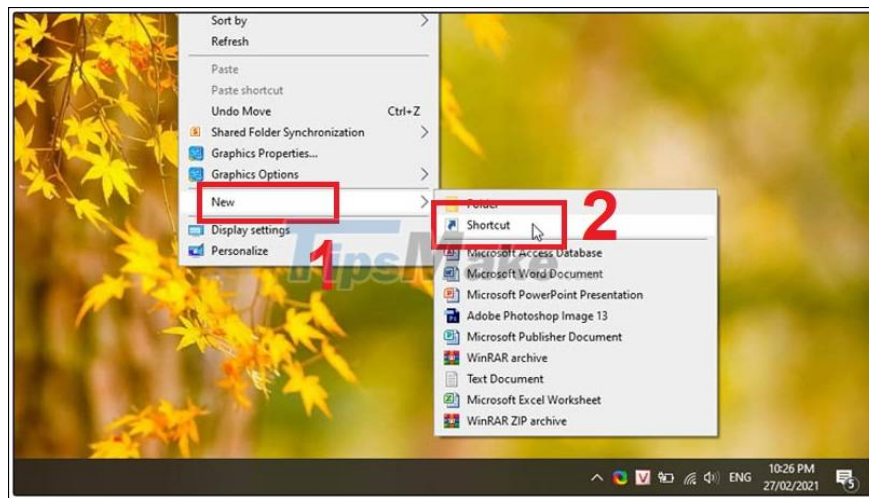
How to set up swipe screen to turn off computer on Windows 10

Have you ever thought that with a simple 'swipe', you can turn off your Windows 10 desktop or laptop without the touch screen?

Slide to Shutdown - Swipe to shutdown is quite familiar with tablets using Windows operating system. So have you ever thought that a desktop or laptop computer without a touchscreen can also have this convenient feature? Let's refer to how to install the screen swipe to turn off the computer on Windows 10 simply below!

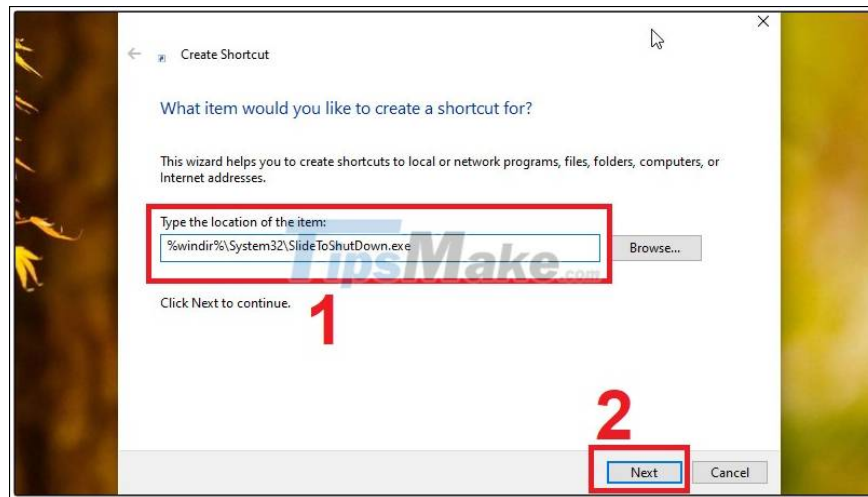
Step 1: Create a Shortcut

Right-click on the desktop then select **New** > Select **Shortcut**.



Step 2: Enter the command to create a Shortcut

Enter the command line '`%windir%\System32\SlideToShutDown.exe`' in the box **Type the location of the item** of the **Create Shortcut** panel > Select **Next**.



Step 3: Name the Shortcut

In the **Type a name for this shortcut box** . Give it any name you want, eg 'Slide to shutdown my PC'> Click **Finish** .



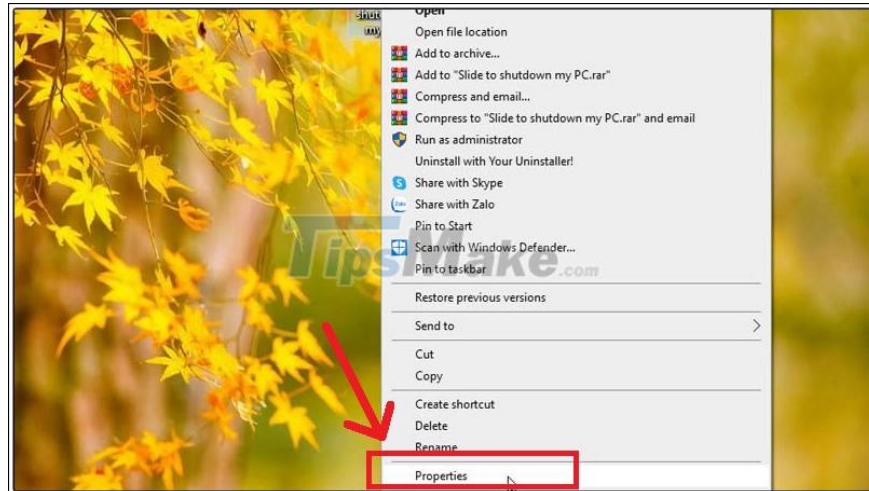
Step 4: Display the Shortcut on the desktop

When you double-click Shortcut on the desktop. The '**Slide to shutdown your PC**' interface will appear. Just **use the mouse and drag it down and** the computer will automatically shut down.

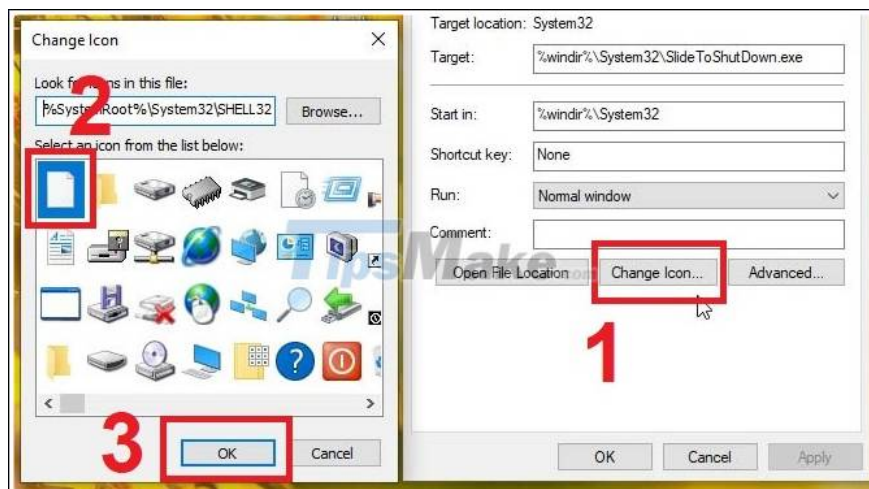


In addition, you can also change the icon for the Shortcut to look more friendly by: Right-clicking on the Shortcut> Select **Properties** .

?



Select **Change Icon** > Select new icon> Select **OK** .



You finished reading the article "**How to set up swipe screen to turn off computer on Windows 10**" edited by the [TipsMake](#) team. We hope this article has provided you with many useful tech tips and tricks. You can search for similar articles on tips and guides. Thank you for reading and for following us regularly.
