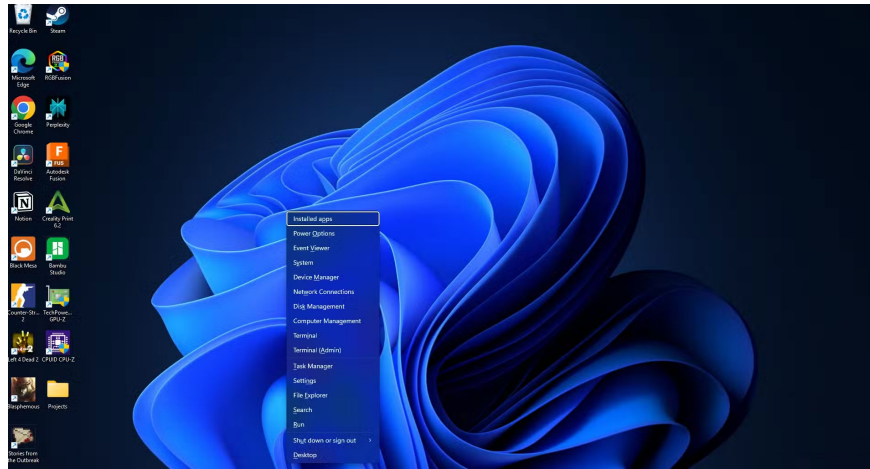


Before we continue, if you've taken steps to gain more control over Windows updates, you may have figured out how to stop Windows updates indefinitely. Since this setting requires the Windows Update Service, you should only use the **Pause updates** option in the settings panel, as disabling this service can disrupt your system.

Install the PSWindowsUpdate module



```
Administrator: Windows PowerShell
Windows PowerShell
Copyright (C) Microsoft Corporation. All rights reserved.

Install the latest PowerShell for new features and improvements! https://aka.ms/PSWindows

PS C:\Users\jricm> Set-ExecutionPolicy RemoteSigned -Force
PS C:\Users\jricm> |
```

```
Administrator: Windows PowerShell
Windows PowerShell
Copyright (C) Microsoft Corporation. All rights reserved.

Install the latest PowerShell for new features and improvements! https://aka.ms/PSWindows

PS C:\Users\jricm> Set-ExecutionPolicy RemoteSigned -Force
PS C:\Users\jricm> Install-Module -Name PSWindowsUpdate -Force

NuGet provider is required to continue
PowerShellGet requires NuGet provider version '2.8.5.201' or newer to interact with NuGet-based repositories. The NuGet
provider must be available in 'C:\Program Files\PackageManagement\ProviderAssemblies' or
'C:\Users\jricm\AppData\Local\PackageManagement\ProviderAssemblies'. You can also install the NuGet provider by running
'Install-PackageProvider -Name NuGet -MinimumVersion 2.8.5.201 -Force'. Do you want PowerShellGet to install and import the
NuGet provider now?
[Y] Yes [N] No [S] Suspend [?] Help (default is "Y"): y
```

```
Windows PowerShell
Copyright (C) Microsoft Corporation. All rights reserved.

Install the latest PowerShell for new features and improvements! https://aka.ms/PSWindows

PS C:\Users\jrcim> Set-ExecutionPolicy RemoteSigned -Force
PS C:\Users\jrcim> Install-Module -Name PSWindowsUpdate -Force

NuGet provider is required to continue
PowerShellGet requires NuGet provider version '2.8.5.201' or newer to interact with NuGet-based repositories. The NuGet
provider must be available in 'C:\Program Files\PackageManagement\ProviderAssemblies' or
'C:\Users\jrcim\AppData\Local\PackageManagement\ProviderAssemblies'. You can also install the NuGet provider by running
'Install-PackageProvider -Name NuGet -MinimumVersion 2.8.5.201 -Force'. Do you want PowerShellGet to install and import the
NuGet provider now?
[Y] Yes [N] No [S] Suspend [?] Help (default is "Y"): y
PS C:\Users\jrcim> Import-Module PSWindowsUpdate
PS C:\Users\jrcim> |
```

```
PS C:\Users\jrcim> Get-Command -Module PSWindowsUpdate

CommandType Name Version Source
-----
Alias Clear-WUJob 2.2.1.5 PSWindowsUpdate
Alias Download-WindowsUpdate 2.2.1.5 PSWindowsUpdate
Alias Get-WUInstall 2.2.1.5 PSWindowsUpdate
Alias Get-WUList 2.2.1.5 PSWindowsUpdate
Alias Hide-WindowsUpdate 2.2.1.5 PSWindowsUpdate
Alias Install-WindowsUpdate 2.2.1.5 PSWindowsUpdate
Alias Show-WindowsUpdate 2.2.1.5 PSWindowsUpdate
Alias UnHide-WindowsUpdate 2.2.1.5 PSWindowsUpdate
Alias Uninstall-WindowsUpdate 2.2.1.5 PSWindowsUpdate
Cmdlet Add-WUServiceManager 2.2.1.5 PSWindowsUpdate
Cmdlet Enable-WURemoting 2.2.1.5 PSWindowsUpdate
Cmdlet Get-WindowsUpdate 2.2.1.5 PSWindowsUpdate
Cmdlet Get-WUAppVersion 2.2.1.5 PSWindowsUpdate
Cmdlet Get-WUHistory 2.2.1.5 PSWindowsUpdate
Cmdlet Get-WUInstallerStatus 2.2.1.5 PSWindowsUpdate
Cmdlet Get-WUJob 2.2.1.5 PSWindowsUpdate
Cmdlet Get-WULastResults 2.2.1.5 PSWindowsUpdate
Cmdlet Get-WUOfflineMSU 2.2.1.5 PSWindowsUpdate
Cmdlet Get-WURobotStatus 2.2.1.5 PSWindowsUpdate
Cmdlet Get-WUServiceManager 2.2.1.5 PSWindowsUpdate
Cmdlet Get-WUSettings 2.2.1.5 PSWindowsUpdate
Cmdlet Invoke-WUJob 2.2.1.5 PSWindowsUpdate
Cmdlet Remove-WindowsUpdate 2.2.1.5 PSWindowsUpdate
Cmdlet Remove-WUServiceManager 2.2.1.5 PSWindowsUpdate
Cmdlet Reset-WUComponents 2.2.1.5 PSWindowsUpdate
Cmdlet Set-PSWUSettings 2.2.1.5 PSWindowsUpdate
Cmdlet Set-WUSettings 2.2.1.5 PSWindowsUpdate
Cmdlet Update-WUModule 2.2.1.5 PSWindowsUpdate
```

Start by opening PowerShell with admin rights by pressing **Windows key + X** to access the hidden Windows Start menu and clicking **Terminal(Admin)** . Alternatively, you can also right-click the **Start** button and search for **"PowerShell"** and press **Enter** . Once opened, enter this command:

```
Set-ExecutionPolicy RemoteSigned -Force
```

This change ensures the PSWindowsUpdate module can function properly while maintaining security for other scripts.

Next, install the module using:

```
Install-Module -Name PSWindowsUpdate -Force
```

This command will download the module from Microsoft's PowerShell Gallery and install it automatically. When prompted to install from an untrusted repository, type **"Y"** to continue. The PowerShell Gallery is an official Microsoft repository, so this warning is more of a formality than a real security concern.

Once installed, import the new module with the command:

```
Import-Module PSWindowsUpdate
```

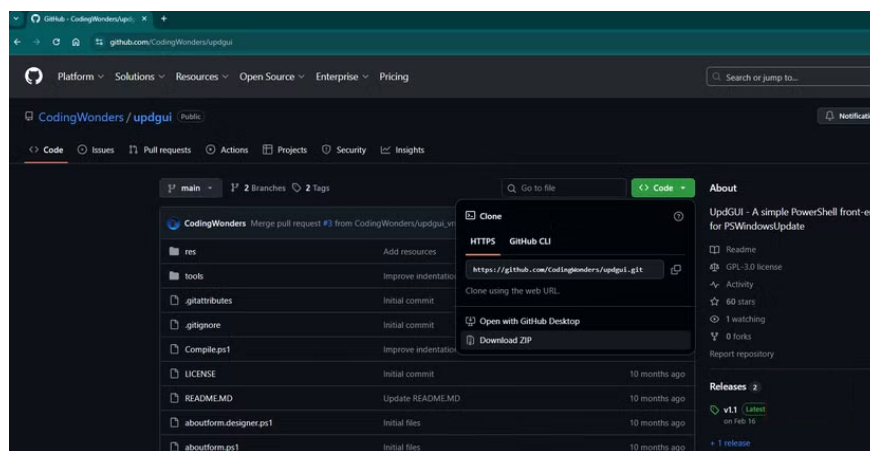
This command will load all the update management commands into your current PowerShell session. You can then verify everything is working correctly by typing:

```
Get-Command -Module PSWindowsUpdate
```

This command will display a list of all available commands for PSWindowsUpdate. Once confirmed, you can now use the module using the PowerShell command line interface. If you prefer to use a GUI instead of a terminal, try pairing PSWindowsUpdate with UpdGUI.

Prepare UpdGUI

UpdGUI acts as a graphical interface that makes PSWindowsUpdate easily accessible to everyone. Download the latest version from the official GitHub repository . The tool is integrated as a single PowerShell script , making installation as simple as downloading and running.



Place the updgui.ps1 file in a convenient location, such as your Documents folder or Desktop. You don't need to install anything or modify any system files. This script is one of those portable Windows tools that can be stored on a USB drive for easy access on the go. Just make sure you have admin rights when opening it in PowerShell.

Before running UpdGUI for the first time, check your PowerShell language mode by entering this command in the PowerShell admin window.

```
$ExecutionContext.SessionState.LanguageMode
```

```

Administrator: Windows PowerShell
Windows PowerShell
Copyright (C) Microsoft Corporation. All rights reserved.

Install the latest PowerShell for new features and improvements! https://aka.ms/PSWindows

PS C:\Users\jricm> $ExecutionContext.SessionState.LanguageMode
FullLanguage
PS C:\Users\jricm>

```

The output should show "**FullLanguage**" for UpdGUI to work properly. If it shows "**ConstrainedLanguage**", you will need to adjust your system's PowerShell execution policy.

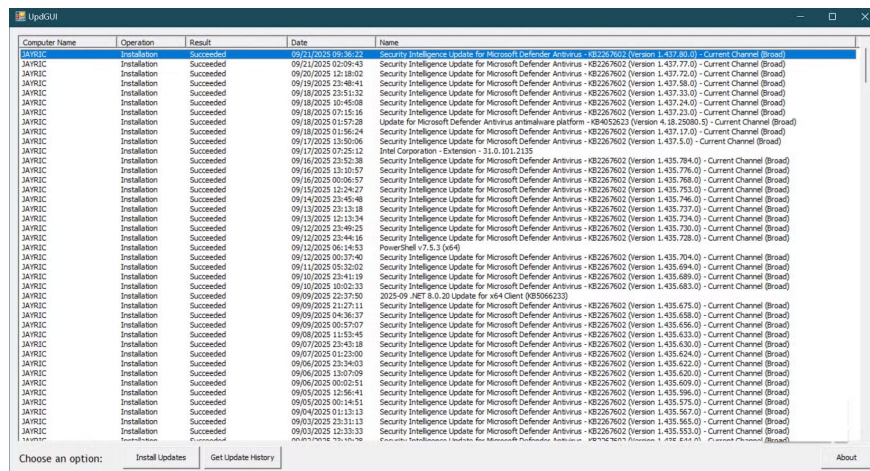
Easy to use setup

Once everything is installed, you have two powerful ways to manage Windows updates. The command line method offers maximum flexibility and automation potential, while the GUI offers point-and-click simplicity.

Working with the GUI interface

Launch the tool by right-clicking on updgui.ps1 and selecting **Run with PowerShell** or open it from an admin PowerShell session in the UpdGUI folder using:

```
. updgui.ps1
```



The interface displays the update history and available updates in a neat list format with checkboxes next to each item. You can quickly see the title, size, and importance of the update. Select the updates you want to install by checking their boxes, then click the **Install** button to start the process.

Using PowerShell commands

```

Install the latest PowerShell for new features and improvements! https://aka.ms/PSWindows

Install updates for JAVRIC
[0/1] Security Intelligence Update for Microsoft Defender Antivirus - KB2267602 (Version 1.437.93.0) - Current Channel (Broad) 2GB
[
]

JAVRIC ----- KB2267602 2GB Security Intelligence Update for Microsoft Defender Antivirus - KB2267602 (Version 1.437.93.0) - Cur...
JAVRIC ----- 2MB Intel - System - 4/12/2017 12:00:00 AM - 14.28.47.630
JAVRIC ----- 8MB LeMobile - Other hardware - Android Composite ADB Interface
JAVRIC ----- 46KB Intel - System - 9/19/2017 12:00:00 AM - 11.7.0.1000
JAVRIC ----- 70MB Intel Corporation - SoftwareComponent - 7/25/2019 12:00:00 AM - 21.40.1.0
JAVRIC ----- 429KB Lenovo Ltd. - Firmware - 1.0.0.0
JAVRIC ----- 5MB Lenovo Ltd. - Firmware - 1.07.0.0
JAVRIC ----- 323MB Intel Corporation - Display - 31.0.101.2135

PS C:\Users\jric> Get-WindowsUpdate -Category "Security Updates"
PS C:\Users\jric> Get-WindowsUpdate -Category "Drivers"

ComputerName Status KB Size Title
-----
JAVRIC ----- 2MB Intel - System - 4/12/2017 12:00:00 AM - 14.28.47.630
JAVRIC ----- 8MB LeMobile - Other hardware - Android Composite ADB Interface
JAVRIC ----- 46KB Intel - System - 9/19/2017 12:00:00 AM - 11.7.0.1000
JAVRIC ----- 70MB Intel Corporation - SoftwareComponent - 7/25/2019 12:00:00 AM - 21.40.1.0
JAVRIC ----- 429KB Lenovo Ltd. - Firmware - 1.0.0.0
JAVRIC ----- 5MB Lenovo Ltd. - Firmware - 1.07.0.0
JAVRIC ----- 323MB Intel Corporation - Display - 31.0.101.2135

PS C:\Users\jric> Get-WindowsUpdate -NotCategory "Drivers" -Install -AcceptAll
X ComputerName Result KB Size Title
-----
1 JAVRIC Accepted KB2267602 2GB Security Intelligence Update for Microsoft Defender Antivirus - KB2267602 (Version 1.437.93.0) - C...
2 JAVRIC Downloaded KB2267602 2GB Security Intelligence Update for Microsoft Defender Antivirus - KB2267602 (Version 1.437.93.0) - C...

```

The command line interface excels at both simple tasks and complex filtering scenarios. For a basic update check, use:

`Get-WindowsUpdate`

This command provides detailed information about each update, including its size and the components it affects.

But not all updates are created equal. Sometimes we just want the updates that are essential for smooth and secure operations. For security updates, you can use:

`Get-WindowsUpdate -Category "Security Updates" -Install -AcceptAll`

This command ensures your system stays protected from known vulnerabilities without the stability risks of other types of updates.

For driver updates, use:

`Get-WindowsUpdate -Category "Drivers"`

This command displays available hardware updates before you install them. Some driver updates improve performance, while others may cause compatibility issues with specialized hardware or software. Be sure to update when it's convenient for you.

When you are ready to install all updates except drivers, use:

`Get-WindowsUpdate -NotCategory "Drivers" -Install -AcceptAll`

This helps prevent hardware compatibility issues and ensures that security patches are installed promptly.

You finished reading the article "**How to Setup PSWindowsUpdate and UpdGUI to Get Rid of Windows Update Annoyingness**" edited by the [TipsMake](#) team. We hope this article has provided you with many useful tech tips and tricks. You can search for similar articles on tips and guides. Thank you for reading and for following us regularly.