

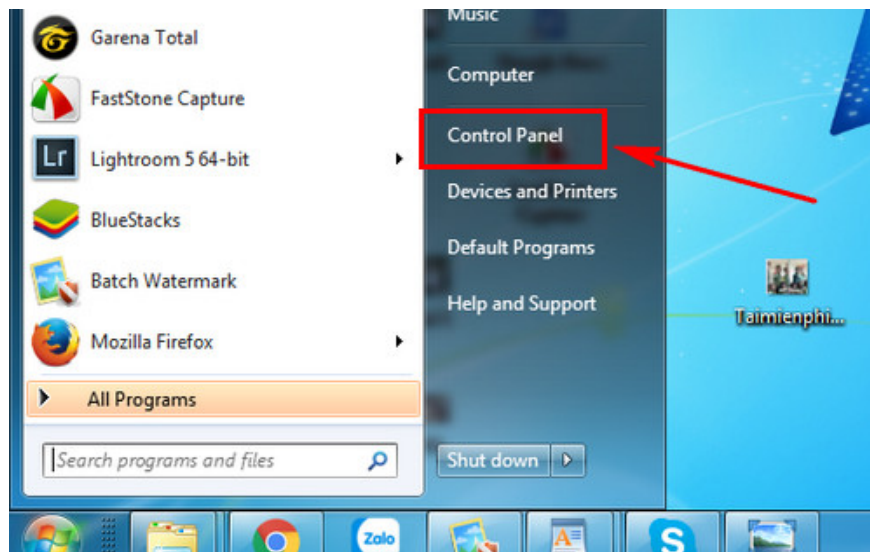
How to set up power off when closing the laptop lid.

Normally, laptops are set to enter Sleep mode by default when the screen is closed, meaning the machine temporarily stops working. However, many people want to turn off the power when closing their laptop to save time shutting it down. By following the settings below to turn off the power when closing your laptop, you can perform this trick.

Regarding screen customization, many people only focus on adjusting the laptop's brightness. For many others, setting the power off when closing the laptop lid is a completely new concept. This is because many people think that closing the lid only puts the laptop into Sleep mode. In reality, besides adjusting the laptop's brightness, there's a trick to switch the laptop from Sleep mode to Shutdown mode when closed. This trick mainly saves time when shutting down the laptop. When needed, you can quickly turn off the power when closing the lid without waiting for the laptop to shut down automatically.

How to set up power off when closing the laptop lid.

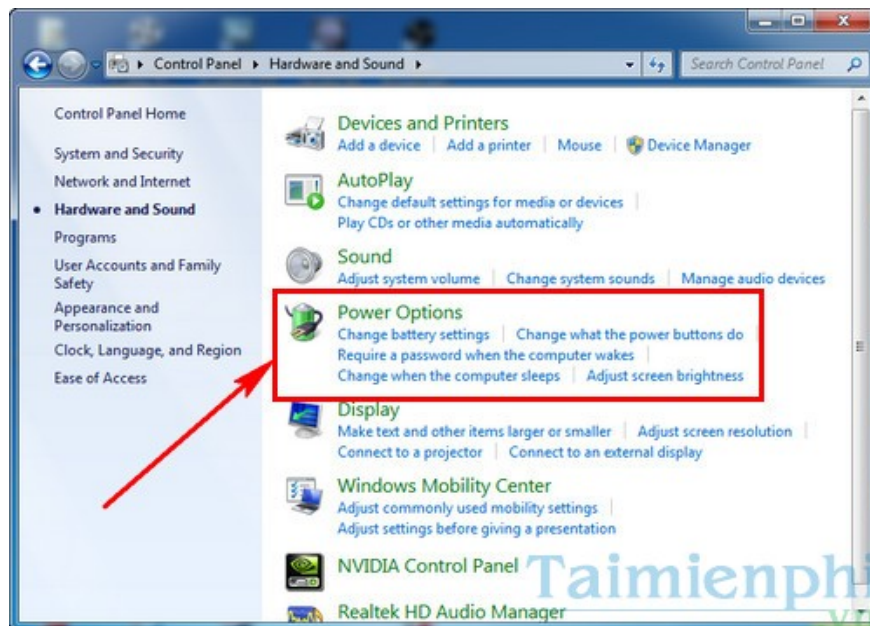
Step 1: On the Desktop, press **Start** or **the Windows key**. Select **Control Panel**.



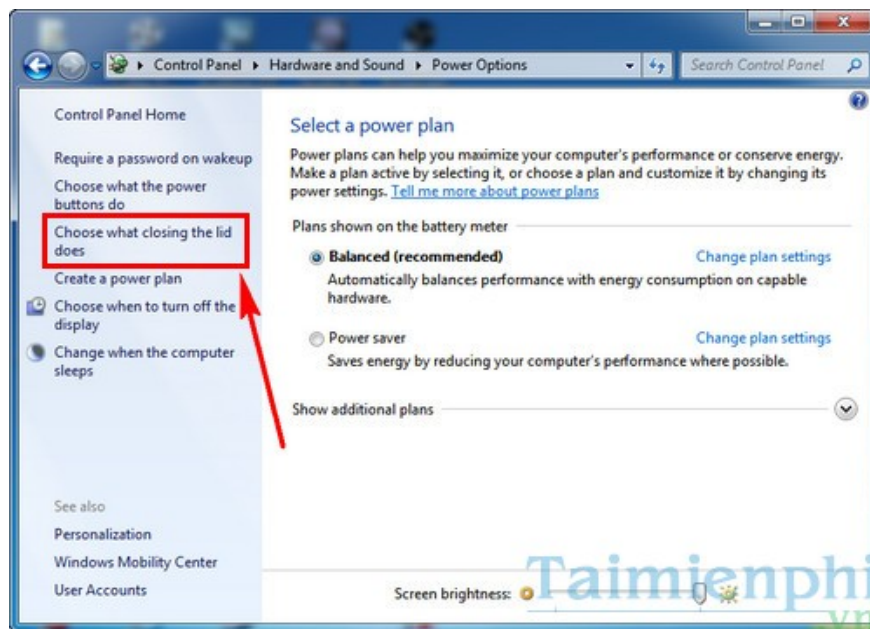
Step 2: Continue to **the Hardware and Sound** section in the Control Panel.



Step 3: Go to **Power Options** . This section adjusts the laptop's battery performance; you can adjust screen timeout, and different modes when plugged in and using the laptop on battery.



Step 4: In **Control Panel Home**, select **Choose what closing the lid does**.



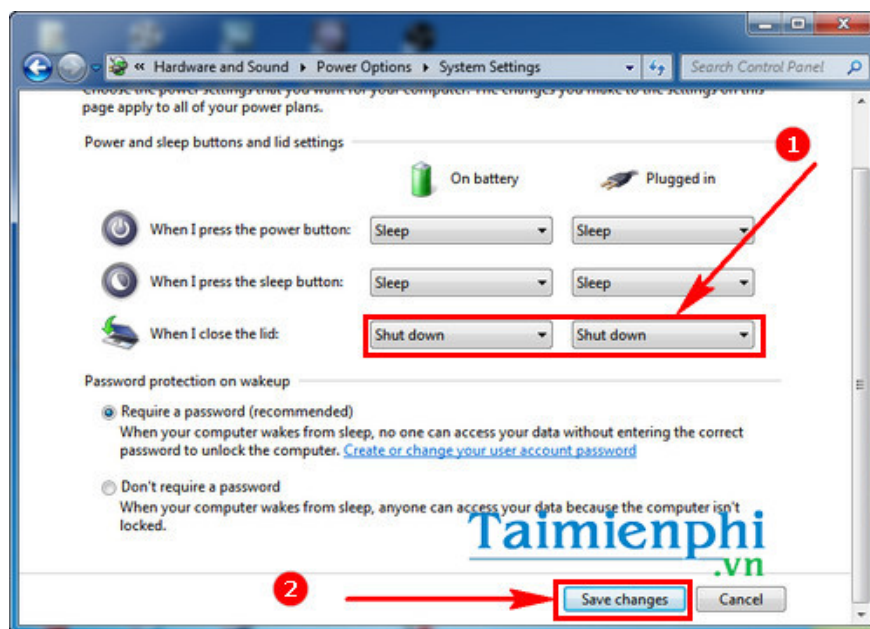
Step 5: Note that the " **When I close the lib**" section is set to **Sleep** mode . Therefore, when you close your laptop, the machine will only go into sleep mode.



Step 6: Click on the word Sleep and scroll down to **Shutdown** , which means turning off the laptop when you close the lid.



Step 7: Repeat the same steps for both **On battery** and **Plugged in** to shut down the laptop when the lid is closed, whether using battery power or plugged into a power outlet.



That's it! After performing these steps, simply close your laptop screen and it will automatically shut down. No need to manually shut down the screen after use. This trick can also be applied when you're using your laptop to access or view confidential content. If someone enters the room or approaches you, just close the laptop screen immediately. If they check your laptop, the screen will already be off by then.

For laptop users, a commonly used trick is listening to music on the laptop even when the lid is closed. To learn how to do this, please refer to the article **on listening to music on a laptop with the lid closed** here.

Windows 10 laptop users also have another interesting trick: enabling automatic brightness on Windows 10. If you need to watch movies, view photos, or read books on your laptop, having the screen constantly on is essential. Instead of constantly clicking the mouse or keyboard, simply enabling automatic brightness in

Windows 10 will keep the screen continuously bright while using your laptop.

However, some users may encounter a situation where they cannot adjust screen brightness and cannot follow the above steps. Actually, this is not a very serious error, and you can fix the Windows 10 screen brightness adjustment issue yourself. The problem lies in the device's drivers being incomplete; therefore, to fix the Windows 10 brightness adjustment error, you need to follow the instructions to update the drivers on your machine. You can apply these steps immediately if your computer cannot adjust screen brightness on Windows 10.

You finished reading the article "**How to set up power off when closing the laptop lid.**" edited by the [TipsMake](#) team. We hope this article has provided you with many useful tech tips and tricks. You can search for similar articles on tips and guides. Thank you for reading and for following us regularly.