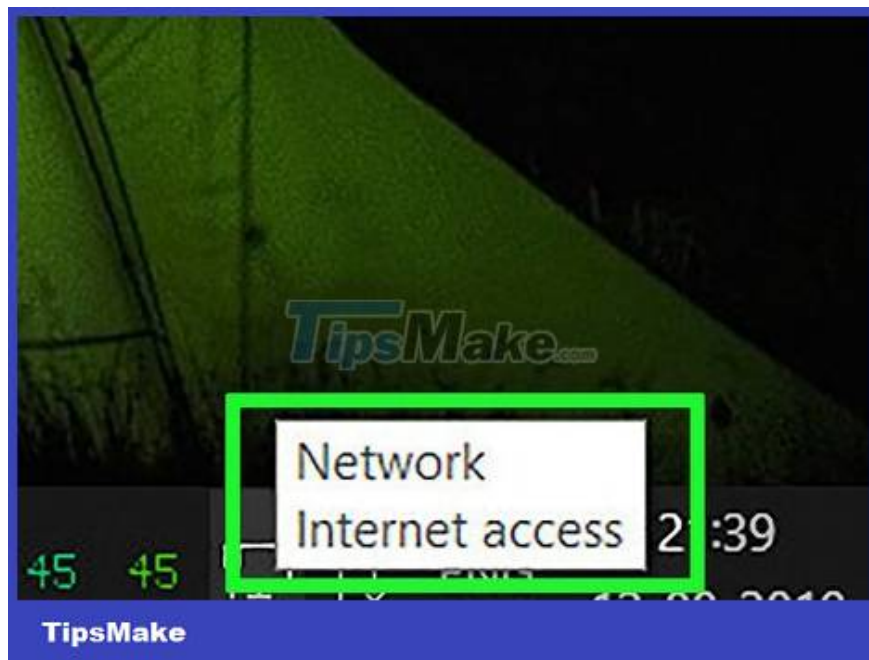


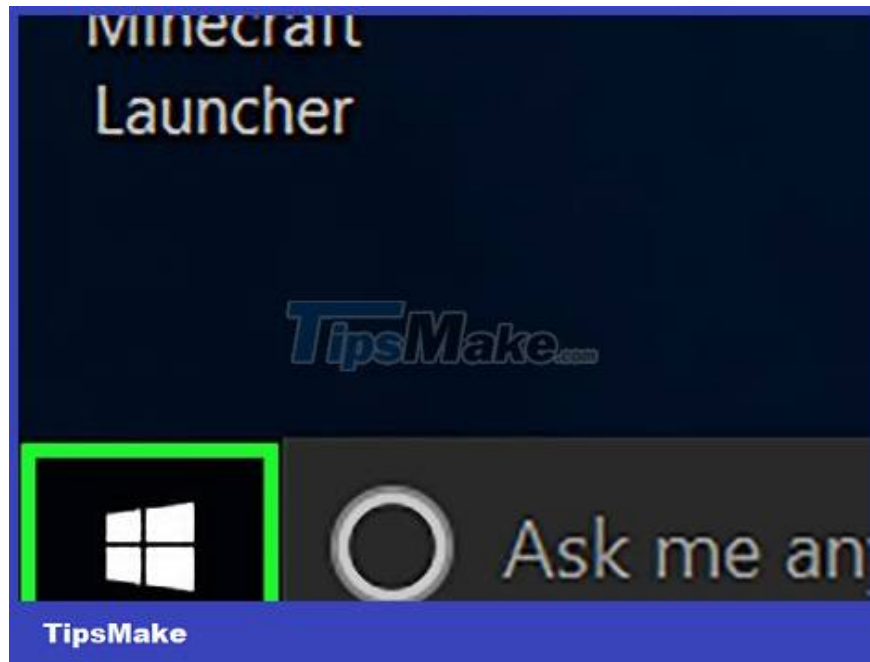
How to Set Up Port Forwarding on a Router

This is an article on how to open the port on the router (router) so that the application can access your network. Opening the port allows games, servers, BitTorrent clients, and other applications to bypass the router's normal security.

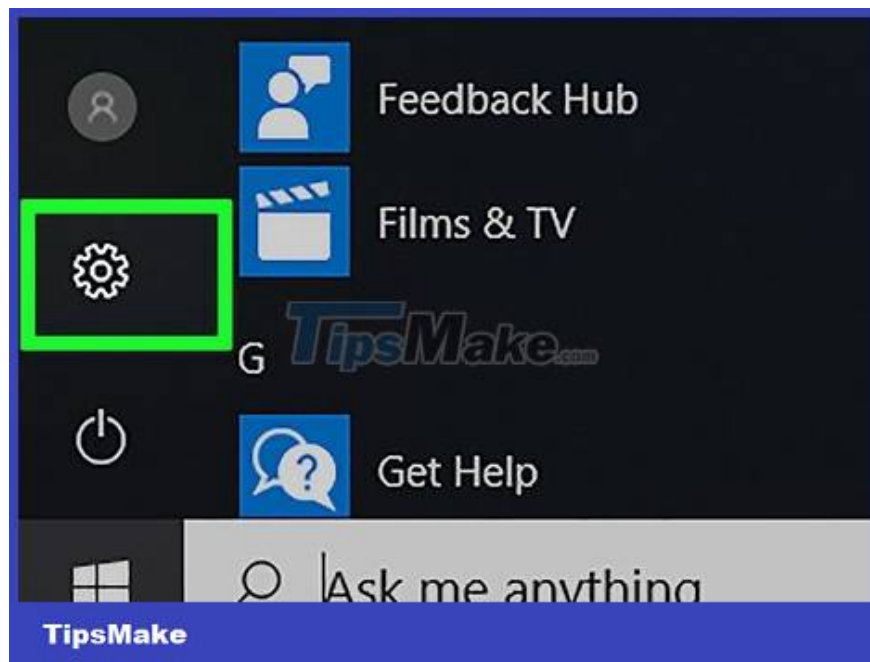
Access router on Windows 10



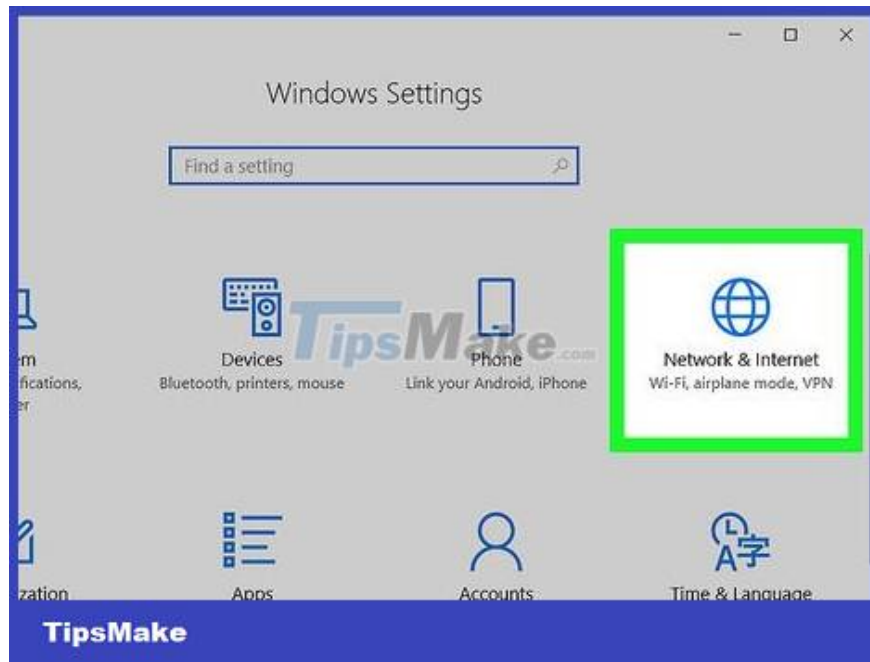
Make sure the computer is connected to the internet. Before accessing the router page, your computer needs an internet connection to see the correct address and connect to the router.



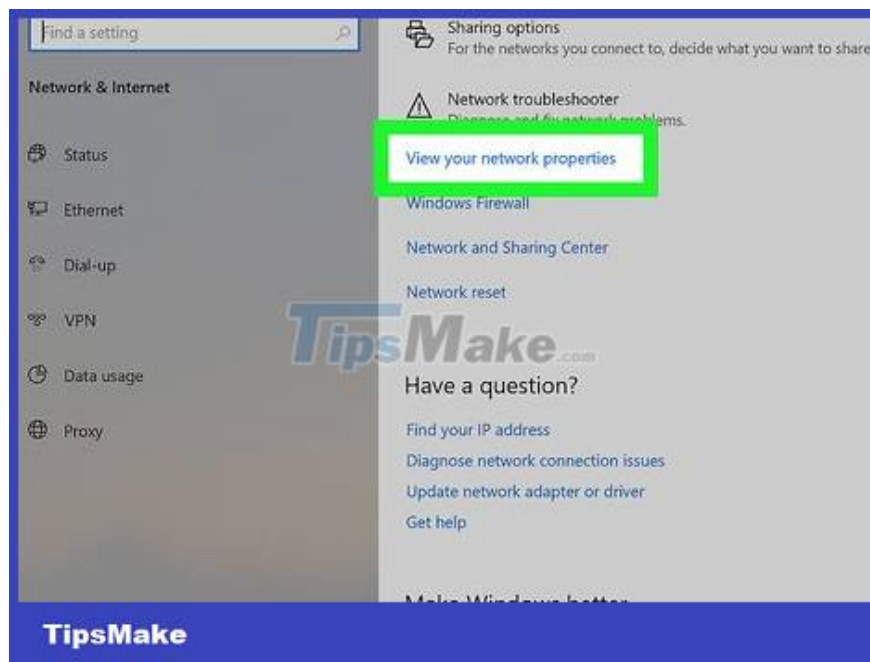
Open Start. Click the Windows icon in the lower left corner of the screen.



Open Settings. Click the gear icon in the lower left corner of the Start window. The Settings window immediately displays on the screen.



Click Network & Internet. It's the option with a globe icon displayed in the middle of the Settings window.



Click View your network properties . This link displays near the bottom of the window.

You may have to scroll down to see the path.

Status:	Operational
Maximum transmission unit:	1500
IPv4 address:	192.168.158.1/24
IPv6 address:	fe80::20c:29ff:fe00:0000/64
DNS servers:	192.168.158.1 192.168.158.1
Connectivity (IPv4/IPv6):	Disconnected
Name:	Wi-Fi
Description:	D-Link DWA-131 Wireless N Nano USB Adapter(rev.B)
Physical address (MAC):	84:ad:5d:00:00:00
Status:	Operational

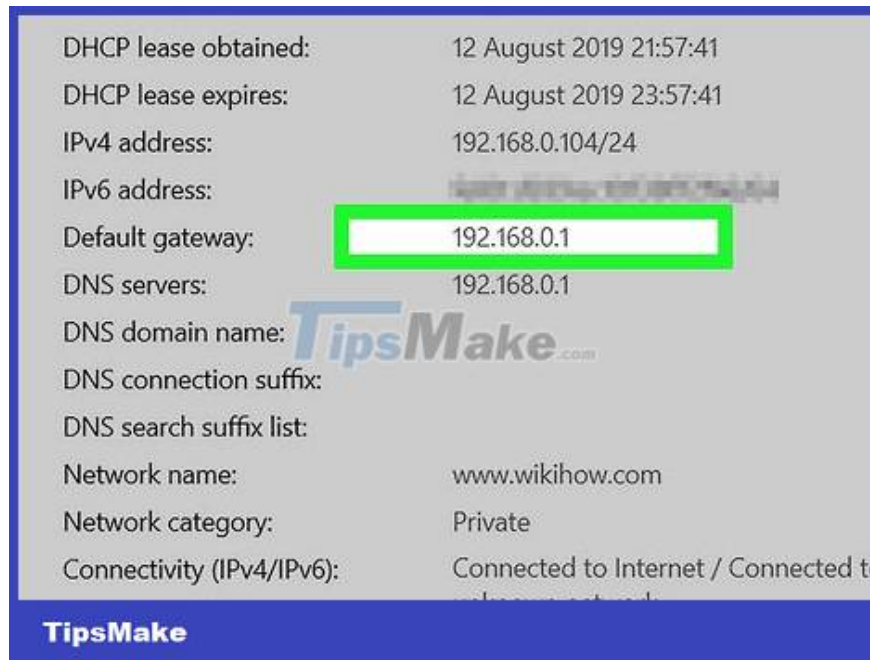
TipsMake

Drag the scroll bar down to the "Wi-Fi" section. You'll see a "Wi-Fi" heading to the right of one of the "Name:" headers on this page.

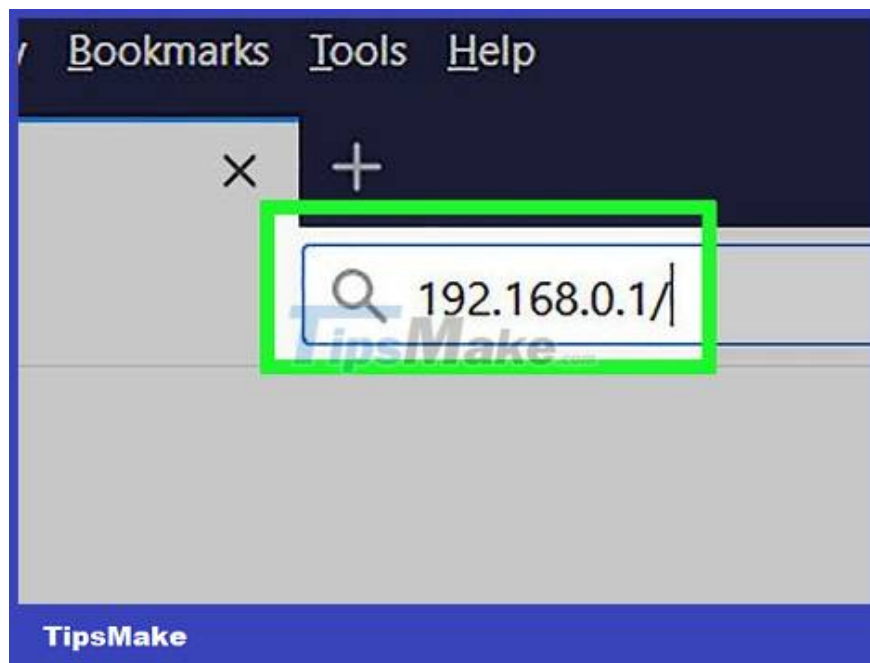
DHCP lease obtained:	12 August 2019 21:57:41
DHCP lease expires:	12 August 2019 23:57:41
IPv4 address:	192.168.0.104/24
IPv6 address:	fe80::20c:29ff:fe00:0000/64
Default gateway:	192.168.0.1
DNS servers:	192.168.0.1
DNS domain name:	
DNS connection suffix:	
DNS search suffix list:	
Network name:	www.wikihow.com
Network category:	Private
Connectivity (IPv4/IPv6):	Connected to Internet / Connected to Internet

TipsMake

Look for the "Default gateway" heading. This is the option near the bottom of the "Wi-Fi" section.



See the default port number. The number to the right of the "Default gateway" header is the router's address. This number displays as an IP address, and begins with 192.168.



Open the router page. Type the default port number in your browser's address bar and press ? Enter. For example, if the default port number is "192.168.1.1", you would enter 192.168.1.1 in the address bar.



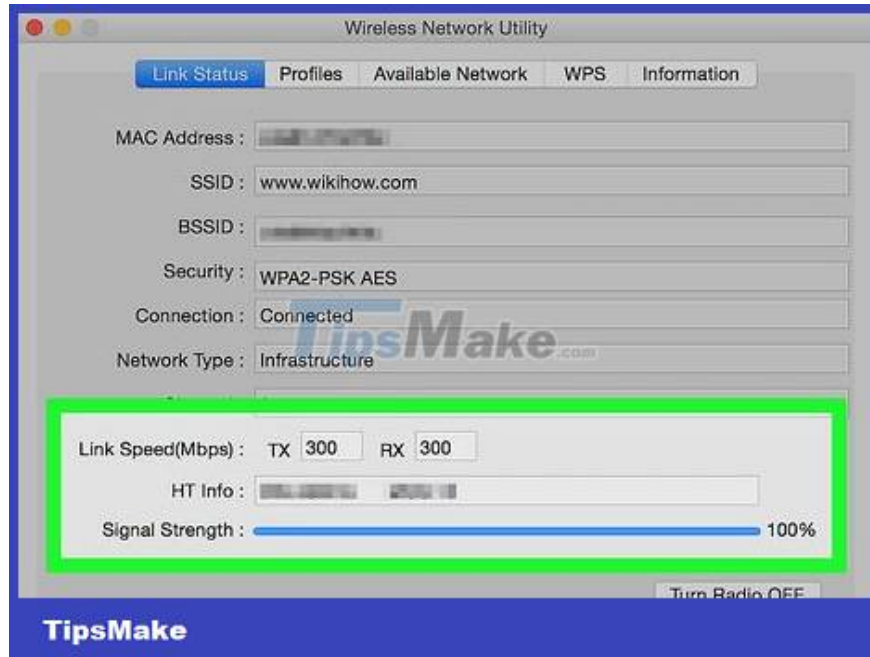
Enter username and password. Skip this step if you are not asked for a username and password. If you have already set up security settings for the router (such as during the first installation), enter the username and password that you chose at the time. Otherwise, common default logins include:

1. Linksys router — Enter admin in the username and password fields.
2. Netgear router — Enter admin in the username field and password in the password field.
3. See your router's manual to confirm the default username and password.
4. If you have forgotten your login information, you must reset the router.
5. You can also find the username and password on the router's label.



Wait for the router's settings page to display. When the router's page opens, you can perform port forwarding.

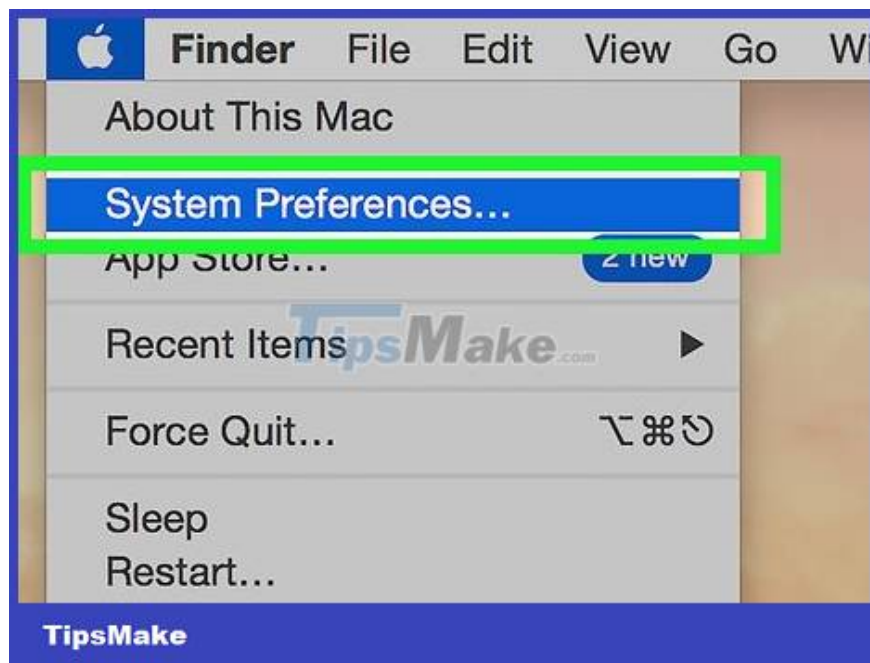
Access router on Mac



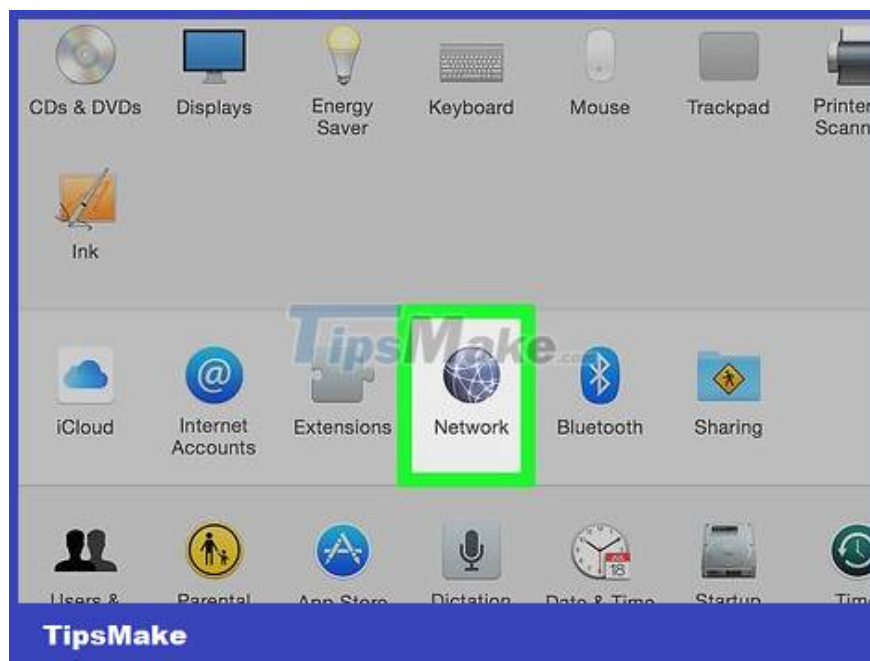
Make sure the computer is connected to the internet. Before accessing the router page, your computer needs an internet connection to see the correct address and connect to the router.



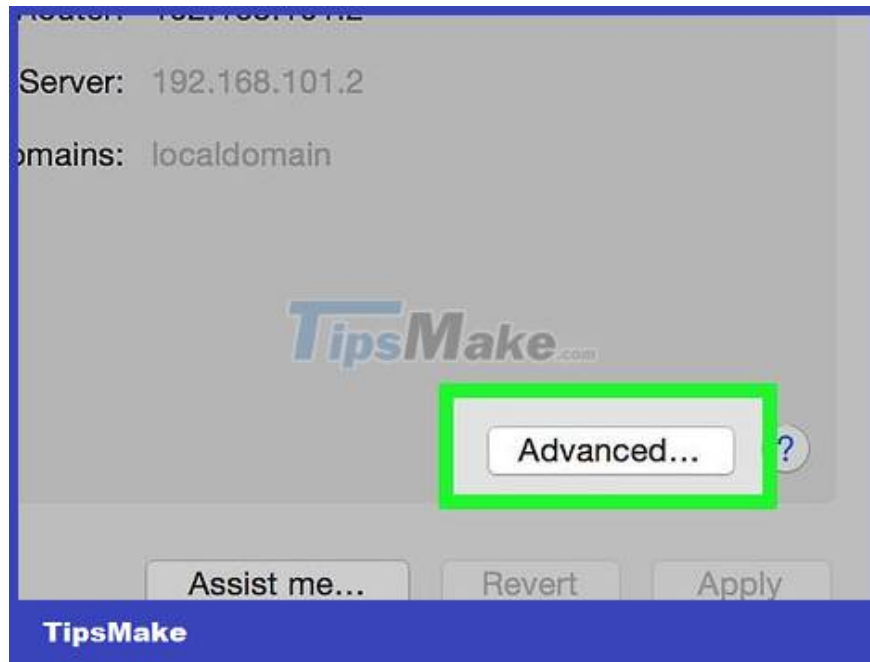
Open the Apple menu. Click the Apple icon in the upper left corner of the screen. A menu will appear here.



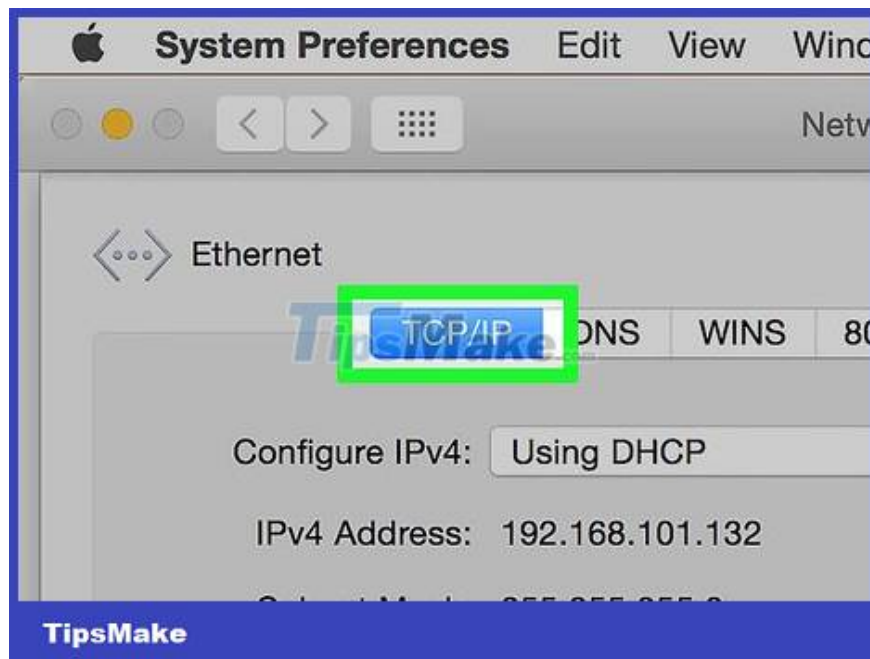
Click System Preferences... (System Preferences). That's the option in the menu that's showing up. This opens the System Preferences window.



Click Network . You'll find the globe icon in the System Preferences window. The Network window immediately appears.



Click Advanced... (Advanced). It's the option in the lower right corner of the window. You will see a new window appear.

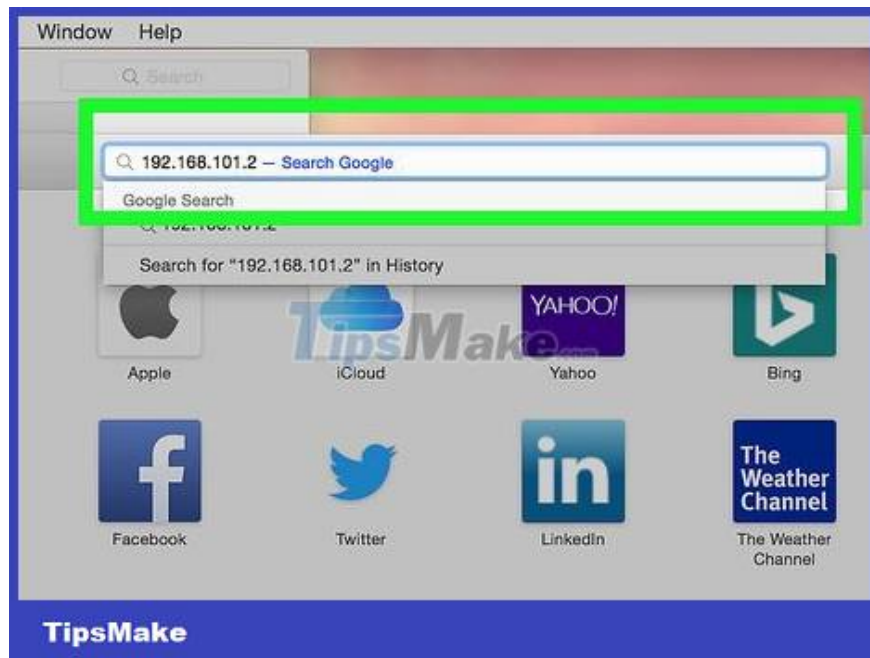


Click the TCP/IP tab . This is the selection at the top of the currently displayed window.



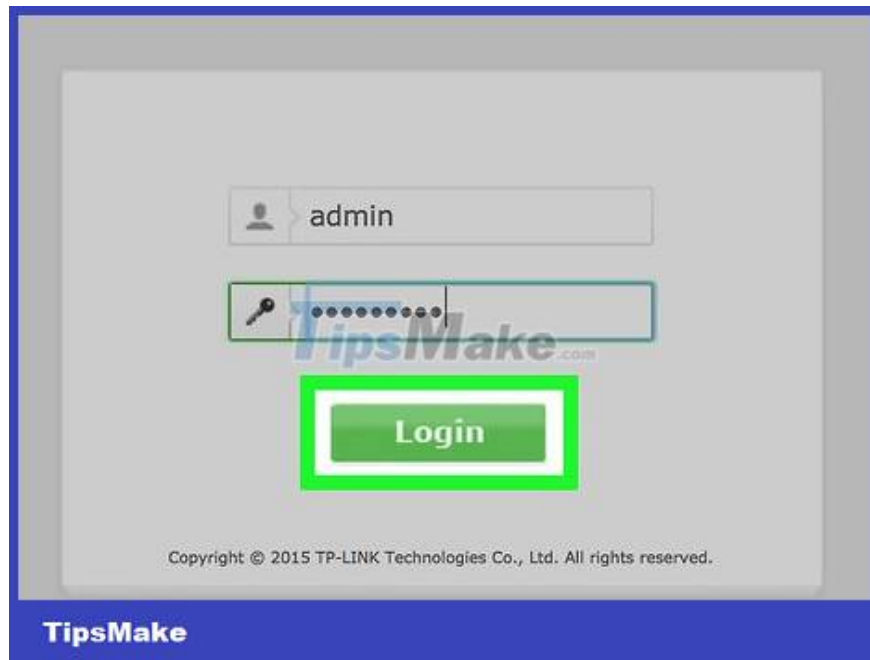
See the number next to the "Router" heading. The number displayed to the right of "Router:" is the router's address.

This number has the same format as an IP address and usually begins with 192.168.



Open the router's page. Enter the default port number in your browser's address bar and press ? Return.

For example, if the default port number is "192.168.1.1", you would enter 192.168.1.1 in the address bar.



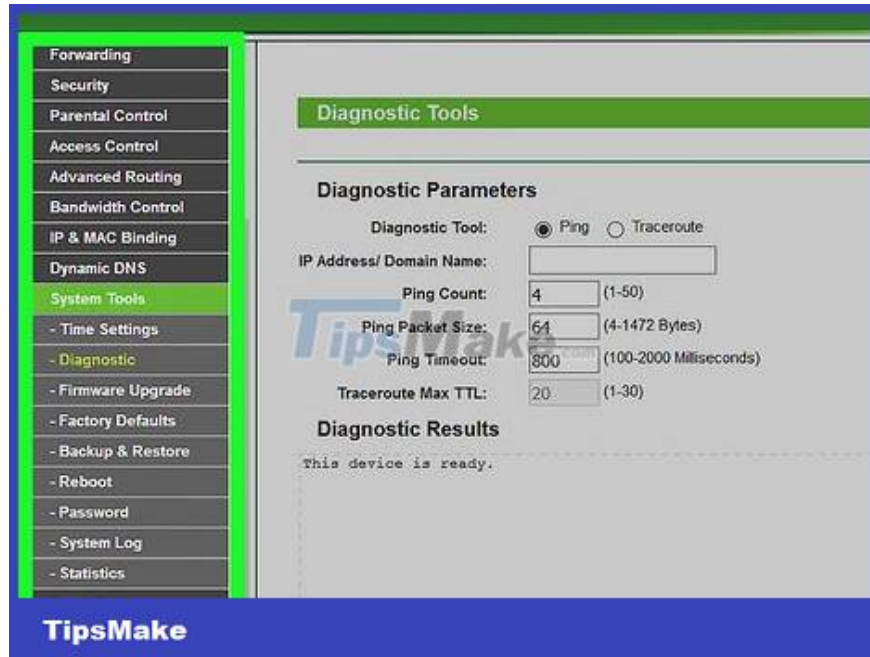
Enter username and password. Skip this step if you are not asked for a username and password. If you have already set up security settings for the router (such as during the first installation), enter the username and password that you chose at the time. Otherwise, common default logins include:

1. Linksys router — Enter admin in the username and password fields.
2. Netgear router — Enter admin in the username field and password in the password field.
3. See your router's manual to confirm the default username and password.
4. If you have forgotten your login information, you must reset the router.
5. You can also find the username and password on the router's label.



Wait for the router's settings page to display. When the router's page opens, you can perform port forwarding.

Port forwarding



Learn the router's interface. Every router has a different website, so you'll need to browse the page to find the port forwarding section. In most cases, the easiest way to find this is to look at your router's manual or online documentation.

For example, if you want to find the port forwarding on a Linksys router, enter linksys port forwarding and find the router's number from here.

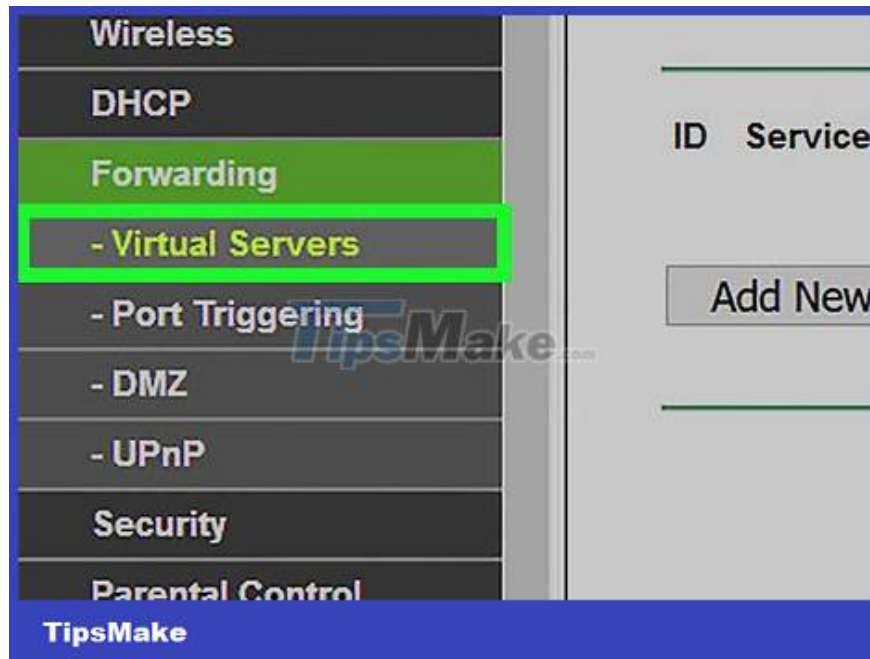
Try multiple options as you search for options on the router page; for example, if you don't see an "Advanced" option on the router page, keep looking - don't give up.



Find the Port Forwarding section. Although every router page is different, the options for port forwarding settings are usually "Port Forwarding", "Applications", "Gaming", "Virtual Servers" (Servers), "Firewall" and "Protected Setup".

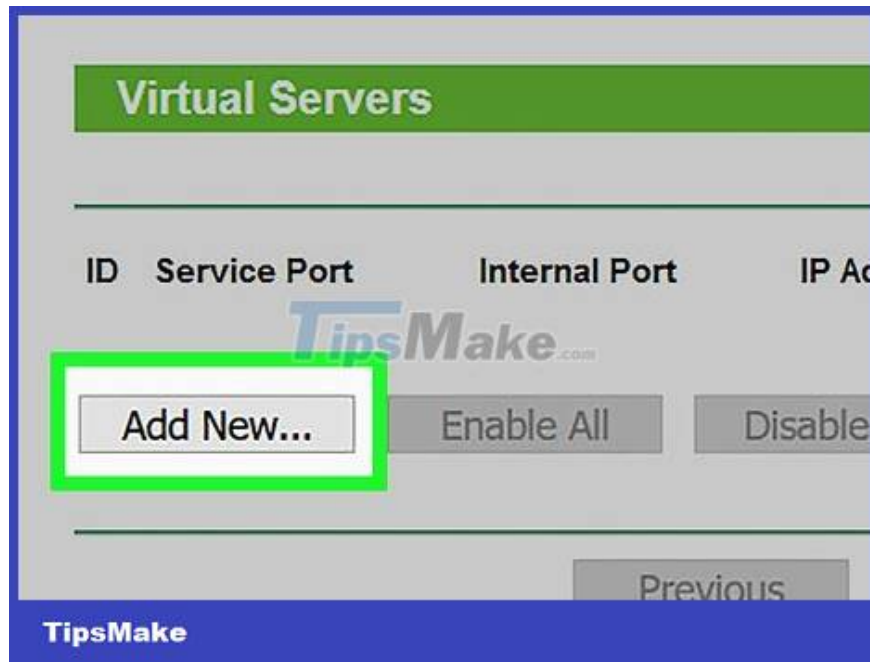
Any option that says "Port" is worth investigating.

If you don't see one of these or similar options, try "Advanced Settings" and look for a subsection called Port Forwarding.



Find presets for port forwarding. Many routers have menus with pre-set options for common applications. If you need to open the port for one of these applications, choose from the "Service Name" or "Application" menu or similar selection and save the changes by clicking Save (Save) or a similar option.

For example, Minecraft is a familiar program that many people choose to port forward, so you can find the Minecraft settings here.



Create custom items. If the program you want to add is not on the list, you need to create a custom port forwarding entry. Each router will have a slightly different implementation, but all have the same required information:

Name or Description - Enter a name for the service (such as "Minecraft"). This is optional information, but will help you keep track of port forwarding guidelines.

Type or Service Type - It can be TCP, UDP or both. If you don't know which to choose, click Both (Both) or TCP/UDP.

Inbound or Start - Enter the first port number here. You need to find out the selected port number to make sure it hasn't been set up for another application.

Private or End - Enter the second port number here. If you only want to open one port, re-enter the number of the first port; if you want to open a series of gates, enter the last number of the series in this field (such as entering "23" in the first field and "33" in the second field will open ports 23 through 33).

The screenshot shows a web form titled "Add or Modify a Virtual Server Entry". The form contains several input fields: "Service Port" with the value "1433" and a hint "(XX-XX or XX)"; "Internal Port" with an empty field and a hint "(XX, Enter a specific port"; "IP Address" with the value "192.168.0.101" and a blue selection box; "Protocol" with the value "192.168.0.101"; and "Status" with a dropdown menu set to "Enabled". At the bottom, there is a "Common Service Port" dropdown menu with "--Select One--". A blue "TipsMake" logo is visible at the bottom left of the form area.

Enter your computer's private IP address. You need to enter information in the "Private IP" or "Device IP" (Device IP) fields. You can find a private IP address on a Windows computer or on a Mac computer.

Depending on the router, the computer's IP address may already be entered here. If so, you will skip this step.

This screenshot shows the same "Add or Modify a Virtual Server Entry" form. The "IP Address" field now contains "192.168.0.101". The "Protocol" dropdown menu is set to "All". The "Status" dropdown menu is set to "Enabled". The "Common Service Port" dropdown menu remains at "--Select One--". At the bottom of the form, there are two buttons: "Save" and "Back". The "Save" button is highlighted with a green border. A blue "TipsMake" logo is visible at the bottom left of the form area.

Save settings. Click the Save or Apply button. When asked, you also need to allow the router to reboot to apply the changes.

You must also check the "Enabled" or "On" box next to the row of forwarded ports.

You finished reading the article "**How to Set Up Port Forwarding on a Router**" edited by the [TipsMake](#) team. We hope this article has provided you with many useful tech tips and tricks. You can search for similar articles on tips and guides. Thank you for reading and for following us regularly.

