

# How to set up Google as the default search engine for the Start menu on Windows 10

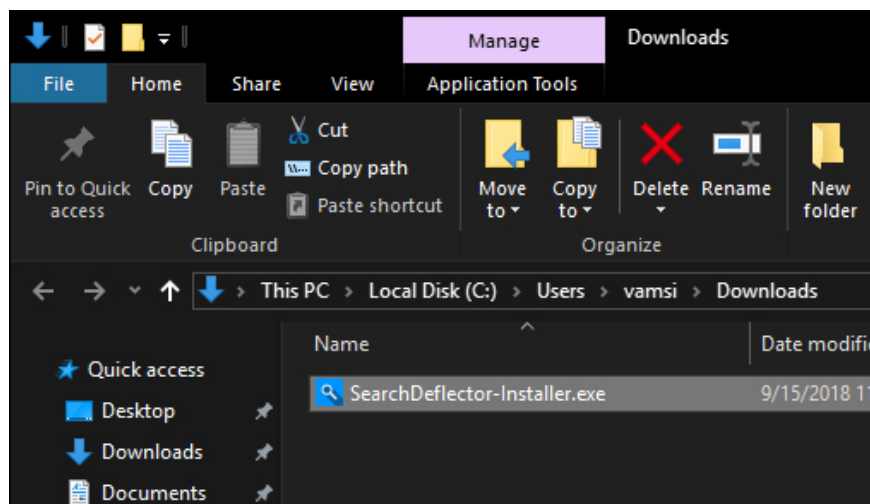
This article will show you how to set up Google as the default search engine for the Start menu on Windows 10.

If you use Cortana or search for something from the Start menu, Microsoft will use Bing as your default search engine. When you click on the search result, it will open in Edge browser even though this is not your default browser. While it is not possible to directly change the default search engine, Windows 10 can be used to use Google and open search results in your favorite browser. This article will show you how to set up Google as the default search engine for the Start menu

## How to set up Google as the default search engine for the Start menu

Because Windows 10 doesn't have the option to change the search engine or the default browser when searching on the Start menu, we'll use the open source Search Deflector software to redirect all searches to the preferred browser. other likes. You won't need to use Bing and the Edge browser anymore. All you need to do is install Search Deflector and set up the search engine and browser.

**Step 1** . First, visit the official GitHub page of the software and download the latest version of Search Deflector. After downloading, double click on the executable file .exe and install.



**Step 2** . During installation, Search Deflector will automatically find and display all the browsers you install on the system and ask you to select the browser you want to use. To select the browser, type its serial number in the list and press **Enter** . For example here using Firefox, we will type 3.

You can also select the ' **System Default** ' option to open search results in your current default browser. This option is handy when you have changed your default browser and do not need to reconfigure Search Deflector again.

**Step 3** . Determine the selection by pressing **Y**.

```
C:\Program Files (x86)\Search Deflector\0.2.1-master\updater.exe
Welcome to Search Deflector setup.
Just answer the prompts in this terminal to set your preferences, and you should be good to go.
If you have any questions, please email me at 'support@spikespaz.com',
or create an Issue on the GitHub repository (https://github.com/spikespaz/search-deflector/issues).
Don't forget to star the repository on GitHub so people see it!
Please make a selection of one of the browsers below.
[1]: Google Chrome ~ C:\Program Files (x86)\Google\Chrome\Application\chrome.exe
[2]: Internet Explorer ~ C:\Program Files\Internet Explorer\iexplore.exe
[3]: Mozilla Firefox ~ C:\Program Files\Mozilla Firefox\firefox.exe
[4]: System Default
[5]: Custom Path
Selection: 3
You chose 'Mozilla Firefox ~ C:\Program Files\Mozilla Firefox\firefox.exe'.
Is this correct? (Y/n): Y
```

**Step 4** . Select the search engine you want to use by pressing the number in the list. For example, if you want to use Google as your default search engine, type 7 and press **Enter** .

```
C:\Program Files (x86)\Search Deflector\0.2.1-master\updater.exe
Please make a selection of one of the browsers below.
[1]: Google Chrome ~ C:\Program Files (x86)\Google\Chrome\Application
[2]: Internet Explorer ~ C:\Program Files\Internet Explorer\iexplore.
[3]: Mozilla Firefox ~ C:\Program Files\Mozilla Firefox\firefox.exe
[4]: System Default
[5]: Custom Path
Selection: 3
You chose 'Mozilla Firefox ~ C:\Program Files\Mozilla Firefox\firefox
Is this correct? (Y/n): Y
Please make a selection of one of the search engines below.
[1]: Ask
[2]: Bing
[3]: Dictionary.com
[4]: DuckDuckGo
[5]: Ecosia
[6]: GitHub
[7]: Google
[8]: Stack Overflow
[9]: Thesaurus.com
[10]: Wikipedia
[11]: Wolfram Alpha
[12]: Yahoo
[13]: Custom URL
Selection: 7
```

**Step 5** . Then confirm your selection by entering **Y**.

**Step 6** . After completing the Search Deflector configuration, press **Enter** to close the configuration window.

```
C:\Program Files (x86)\Search Deflector\0.2.1-master\updater.exe

[1]: Ask
[2]: Bing
[3]: Dictionary.com
[4]: DuckDuckGo
[5]: Ecosia
[6]: GitHub
[7]: Google
[8]: Stack Overflow
[9]: Thesaurus.com
[10]: Wikipedia
[11]: Wolfram Alpha
[12]: Yahoo
[13]: Custom URL

Selection: 7

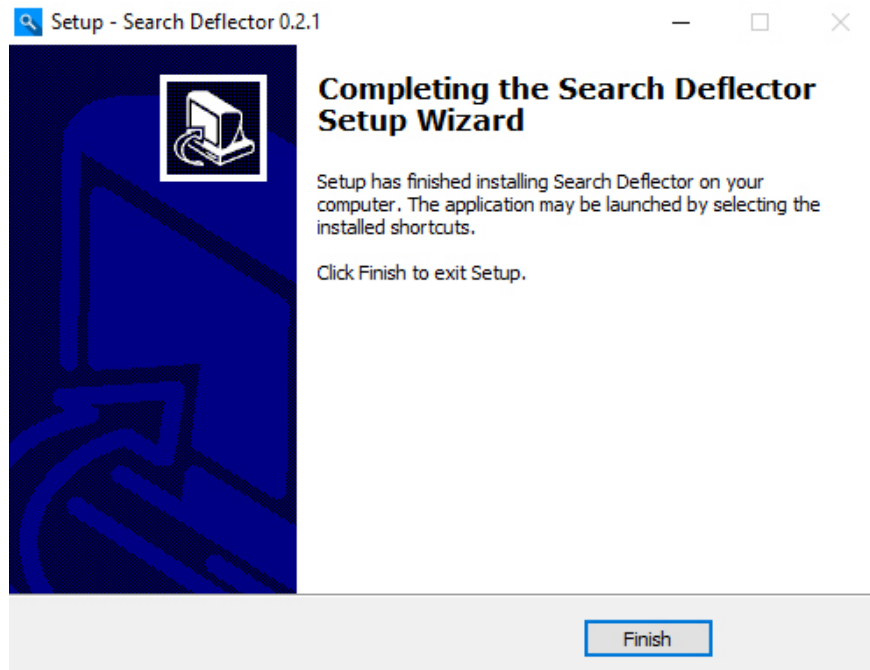
You chose 'Google'.
Is this correct? (Y/n): y

Search Deflector will be set up using the following variables.
If these are incorrect, run this executable again without any arguments.

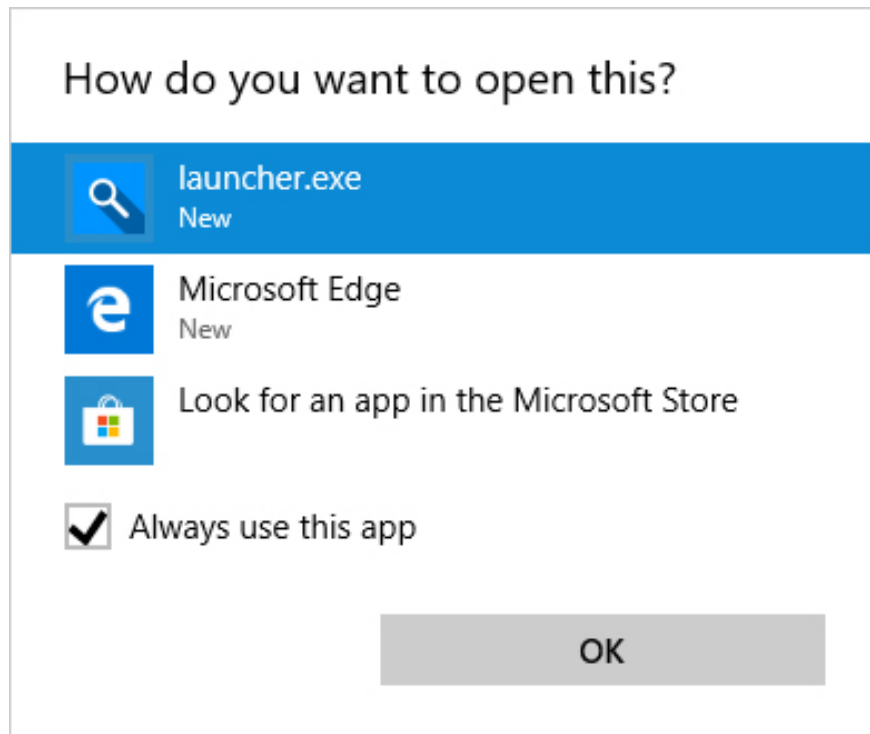
Search Engine: Google
Search Engine URL: google.com/search?q={{query}}
Browser Name: Mozilla Firefox
Browser Path: C:\Program Files\Mozilla Firefox\firefox.exe

Press Enter to close the setup.
```

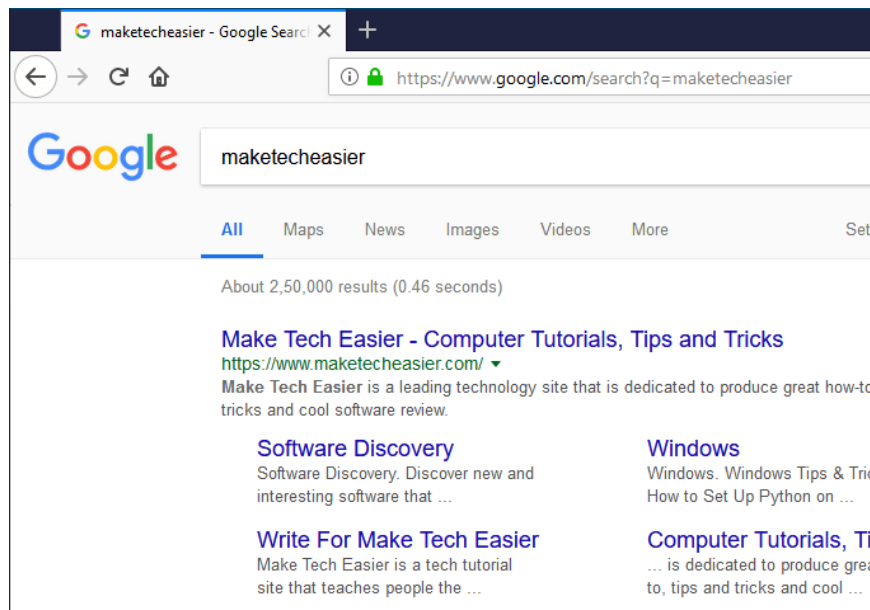
**Step 7** . On the main installation window, click the **Finish** button to complete the installation process.



To test, try searching for something related to the web on the Start menu and press **Enter** . When done for the first time, you will have to choose the default program, select **launcher.exe** and check the box **Always use this app** and click the **OK** button.



Search Deflector will redirect the search to the search engine you have selected and open it in your browser.



One thing to note is that when you perform a search through the Start menu or Cortana, you will still see quick search results with Bing in the right panel. When clicking on the result, Search Deflector will navigate according to the configuration you have set.

If you want to change the configuration of Search Deflector, open File Explorer, go to the Search Deflector installation folder and double-click the 'Setup.exe' file.

I wish you all success!

See more:

1. The default search engine changes on mobile devices
2. The trick to changing the search engine Safari browser on Mac OS X is quick and simple
3. How to remove the "junk" search bar from Chrome and Firefox browsers

You finished reading the article "**How to set up Google as the default search engine for the Start menu on Windows 10**" edited by the [TipsMake](#) team. We hope this article has provided you with many useful tech tips and tricks. You can search for similar articles on tips and guides. Thank you for reading and for following us regularly.