

# How to set up Bluetooth on your laptop quickly and easily.

Finding and installing Bluetooth on your laptop is essential for your laptop to function efficiently. Check out the installation instructions below.

Nowadays, most laptops on the market are equipped with Bluetooth connectivity to allow users to connect other devices such as headphones , keyboards , speakers, mice , etc. However, sometimes you can't connect via Bluetooth and don't know how to set up Bluetooth on your laptop.

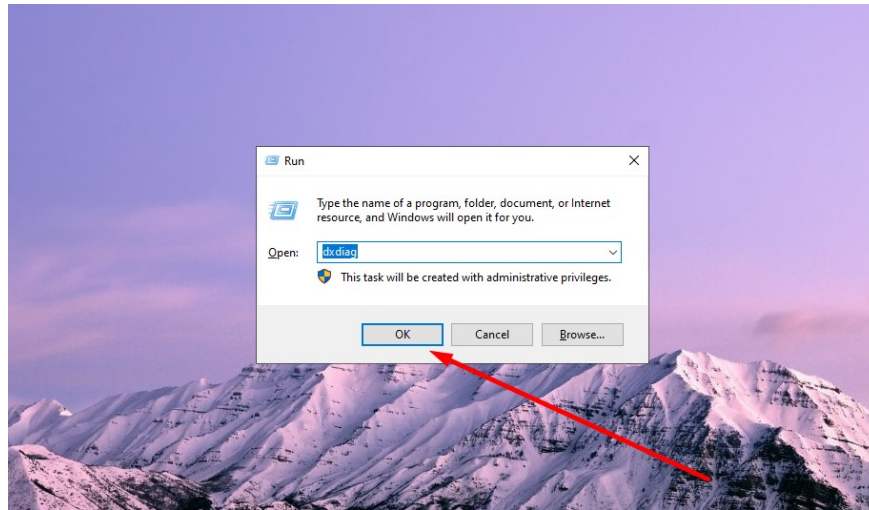
To learn how to set up Bluetooth on your laptop, please refer to the article below.



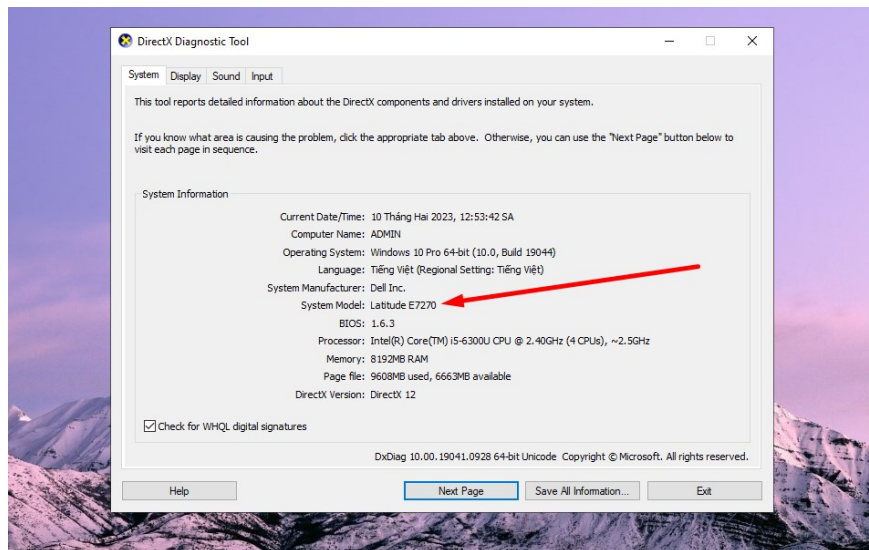
## Manually install Bluetooth on your laptop using Bluetooth drivers.

### Identify the brand name and model name of the laptop.

**Step 1:** First, check the brand of your laptop by pressing the **Windows + T** key combination , typing the keyword **dxdiag**, and clicking **OK** .



**Step 2:** Now, look at the **System Manufacturer** and **System Model** sections . Once you've checked, use **Google to search for** the product and find the appropriate driver for your Windows version.

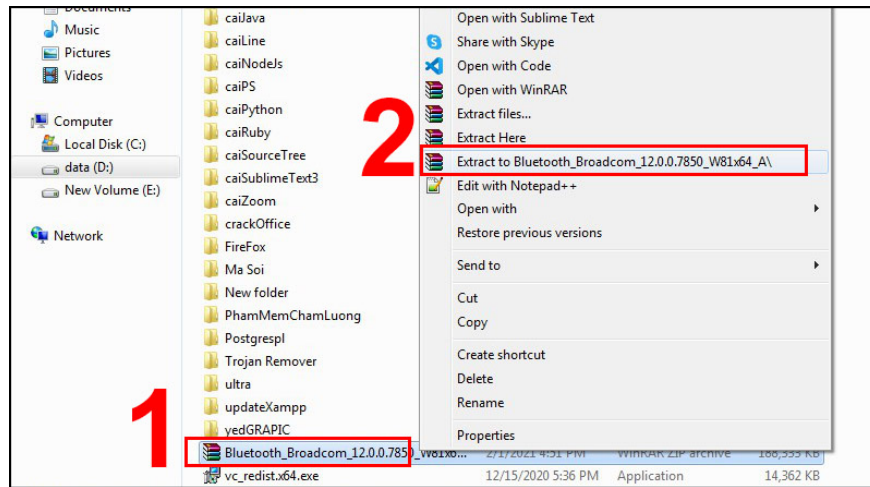


Below are the driver download pages for some major brands that you can refer to:

1. **Download the driver from Dell 's website [here](#) .**
2. **Download the driver from the [Asus website here](#) .**
3. **Download the driver from HP 's website [here](#) : [Link]**
4. **Download the driver from Lenovo's homepage [here](#) : [Link]**
5. **Download the driver from the [Sony Vaio homepage here](#) .**
6. **Download the driver from [Acer 's website here](#).**
7. **Download the driver from [MSI 's homepage here](#) : [Link]**

## **Install drivers on your laptop.**

**Step 1:** First, go to the homepage and **download the driver to your computer.** Once downloaded, extract **the file and proceed with the installation.**



**Step 2:** After the download is complete, proceed with the installation by clicking on **Setup.exe**.

**Step 3:** During the installation process, pay attention to the " **Installing device...**" section . If a message appears saying " **Ready to use,**" the installation is complete.

## Install Bluetooth drivers automatically for your laptop.

### Use Device Manager

Follow these steps to check and update your system drivers via Device Manager directly on your laptop:

**Step 1:** Click on **Start** and then click on **Device Manager** in the search bar.

**Step 2:** Next, click on **Open** .

**Step 3:** Here you will see the devices using drivers on your laptop. **Right-click** on the Bluetooth device you want to check and select **Properties**. **Step 4:** Then, select the **Driver** tab to check. Click on **Update driver** to update. If you see an error, select **Disable Device** to disable it and select **Uninstall Device** to uninstall the driver.

**Step 5:** If you want to **update the driver** and don't want to check other parameters, in the Manager interface, **right- click** on Bluetooth and select **Update Driver** to install Bluetooth on your laptop.

### Use Windows Update

Another method you can use to set up Bluetooth is to use Windows Update:

**Step 1:** Click **Start** , type "**Windows Update Settings**" into the search bar, and click **Open**.

**Step 2:** Next, in the **Windows Update** section , select the **Advanced Options** option .

**Step 3:** Next, go to **Options > Update > Click on Driver updates**.

**Step 4:** Here, the system will suggest **a list of drivers that need updating** . Select the driver that you feel is malfunctioning and update it. Then click the **Download & Install button**. **Step 5:** Finally, **the driver will download** and update automatically.

### Use Driver Talent software.

The final method we'd like to suggest is using a trusted third-party software called Driver Talent. Below are instructions on how to install Driver Talent.

**Step 1:** Click on the **Driver Talent** section to begin the download.

**Step 2:** Next, select **Free Download** .

**Step 3:** Once the download is complete, proceed with the installation on your laptop.

**Step 4:** If you want to use it, select **SCAN** to scan for drivers currently installed on your computer.

**Step 5:** Once the scan is complete, **Driver Talent** will notify you of the drivers that need updating. Choose **to update the Bluetooth driver for your laptop** if any errors are detected.

## In conclusion

So, that concludes our guide on how to easily and effectively set up Bluetooth on your laptop in a snap. We hope this information is helpful to you.

You finished reading the article "**How to set up Bluetooth on your laptop quickly and easily.**" edited by the [TipsMake](#) team. We hope this article has provided you with many useful tech tips and tricks. You can search for similar articles on tips and guides. Thank you for reading and for following us regularly.