

How to set up basic parameters for a computer

How to set up basic parameters for a computer

Each computer has a basic input-output control system (BIOS), which is a system installed on the main board (Mainboard) to help control the computer at the initial stage when the computer is turned on. BIOS reviews and tests devices and their parameters before putting them into operation.

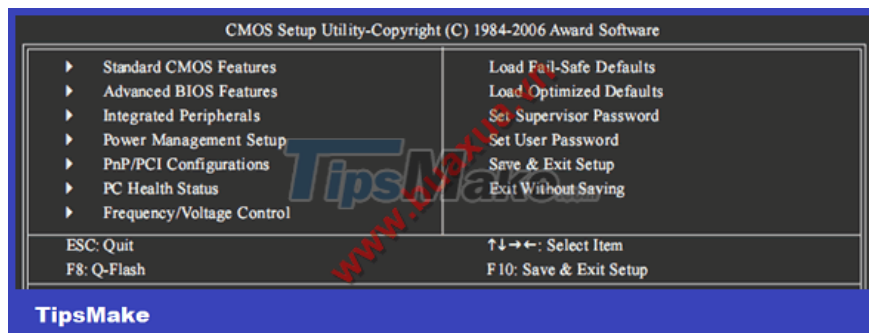
Access to the computer configuration parameter setting table - BIOS Setup

Correctly setting the parameters in the BIOS will help the computer work correctly and efficiently. Normally, you can access the BIOS settings (BIOS Setup) by pressing the **Delete (DEL)** key when the first screen appears immediately after turning on the machine, some machines use the **F1** , **F2** keys , **F10** , **Esc** , **Ctrl + Esc** , **Alt + Esc** , **Ctrl + Alt + Esc** , **Ctrl + Alt + Enter** , **Ins** .



Access to the computer configuration parameter setting table - BIOS Setup

The **BIOS Setup** screen appears with menus categorized for setting up different parameters.

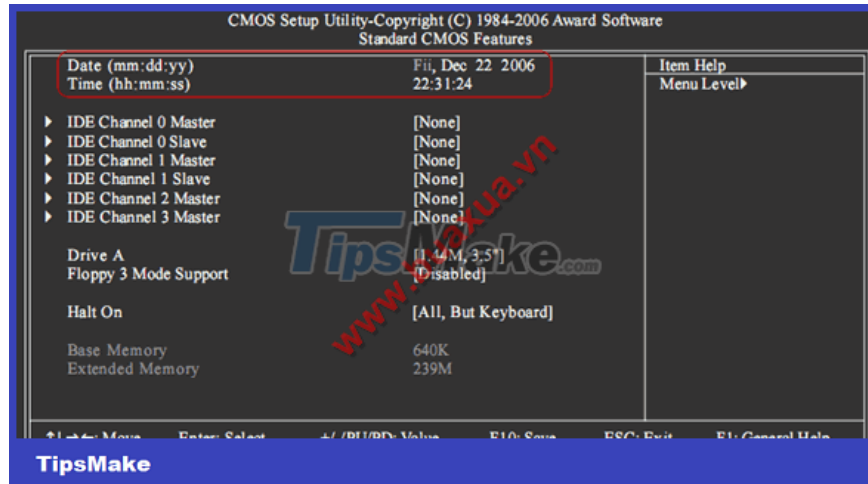


BIOS Setup screen

Basic settings in BIOS Setup

Set time

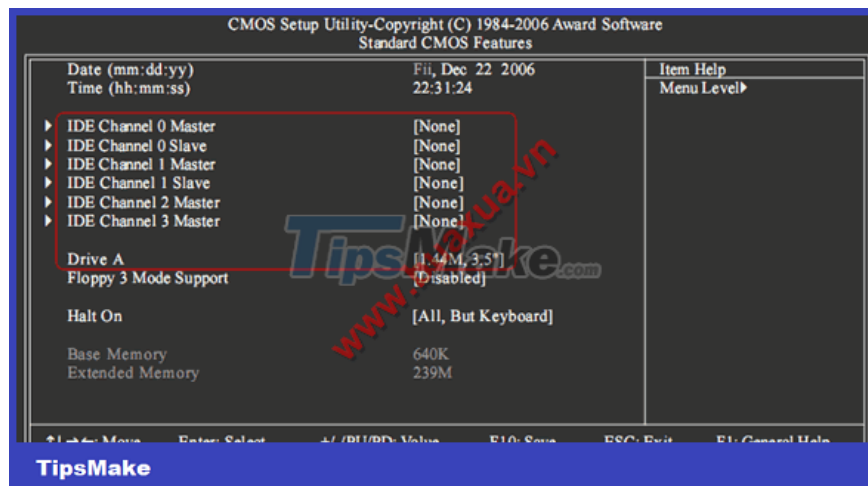
This setting makes the system time correct with the current time. **In the BIOS Setup Utility screen select Standard CMOS Features** , change the parameters in the items: day, month, day, year and hour, minute, second. After editing, press the **Esc** key to return to **the BIOS Setup Utility** .



Set time

Parameter setting for drives

Normally these settings are automatically (Auto) however in some special cases it is necessary to set these parameters manually. **In the BIOS Setup Utility screen select Standard CMOS Features** , **change the parameters in the IDE Channel entries** , each **IDE Channel** corresponds to a hard drive or CD-ROM.



Parameter setting for drives

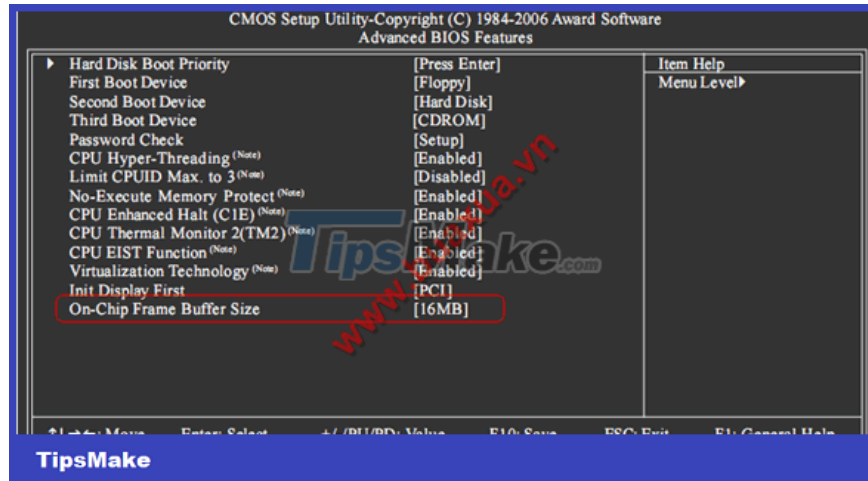
1. **Auto** : BIOS automatically finds and checks to set the parameters for the drive when booting.
2. **None** : Do not use the drive on this IDE Channell, the BIOS will skip the check, so it will reduce the boot time. This is also a way to lock, not allow the use of a certain drive.

3. **Manual** : The user manually sets the parameters for the drive.

If the system is not equipped with a floppy drive, select **Drive A** as **None** , BIOS will skip the check, so it will reduce boot time.

Set up memory for the graphics device

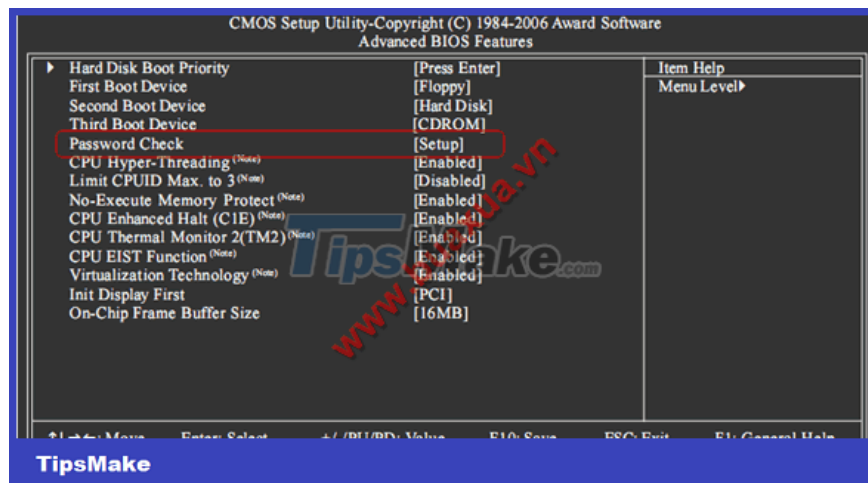
If the system has a graphics device (VGA Card) integrated on the mainboard (Mainboard), this VGA shares memory (RAM) with the system and can increase or decrease this memory capacity. **In the BIOS Setup Utility** screen select **Advanced BIOS Features** , change the parameter in the **On-Chip Frame Buffer Size** section .



Set up memory for the graphics device

Set up password protection

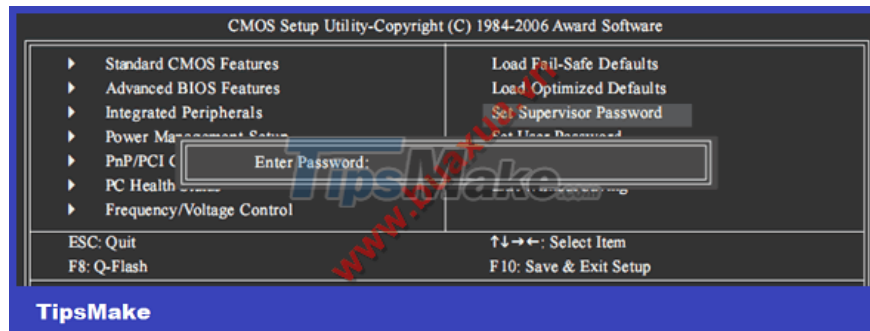
If you want to prevent others from using your computer, you can set up a password, which will block it from the beginning, so it's very safe. **In the BIOS Setup Utility** screen, select **Advanced BIOS Features** , change the parameters in the **Password Check** section :



1. **Setup** : Only prevents access to the BIOS Setup program.
2. **System** : Prevents using the system and accessing the BIOS Setup program.

Select **System** and press the **Esc** key to return to the **BIOS Setup Utility** screen .

Select **Set Supervisor Password** and press **Enter** key , enter the password and press **Enter** key , continue to re-enter the same password as before to confirm and press **Enter** key . This is the password that allows to use the system and access to edit parameters in the BIOS Setup program.



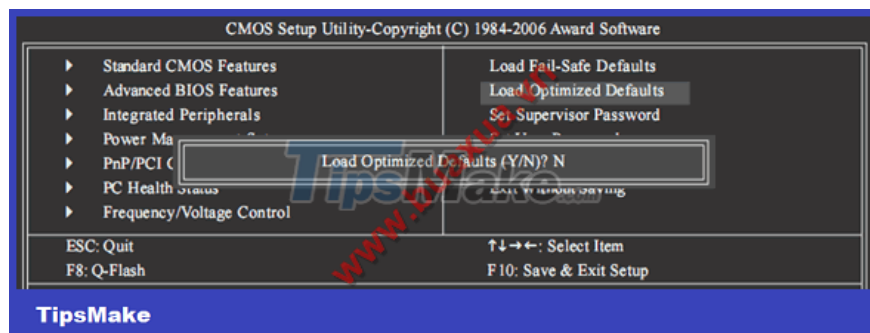
Set password protection

In addition, you can choose to add **Set User Password** , this password only allows using the system but cannot edit the parameters in the BIOS Setup program.

To change or delete the password just select **Set Supervisor Password** or **Set User Password** , enter a new password to change or leave it blank and press **Enter** twice to remove the password.

Set back to default state

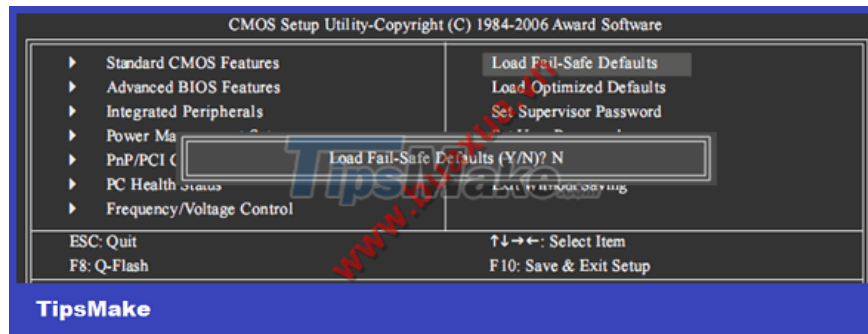
This setting returns all modified parameters to the state set by the manufacturer, which for the average user and in most cases is the best setting. **In the BIOS Setup Utility** screen , select **Load Optimized Defaults** and press **Y** (Yes) to agree.



Set back to default state

Safe setting

This setting reduces the operation of the devices in the system, is used when the system is malfunctioning, unstable or for diagnosing system failures. **In the BIOS Setup Utility** screen select **Load Fail-Safe Defaults** and press **Y** (Yes) to agree.



Safe setting

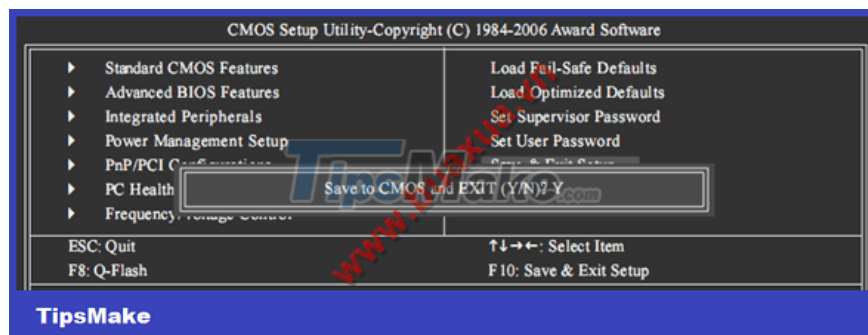
Note:

1. Use arrow keys to move, key + / - or **Page-Up** / **Page-Down** to change parameters, **Enter** key to select, **F7** key to return to default parameters, **Esc** key to rotate. return to the previous screen or exit the program.



Use arrow keys to select

1. After completing the parameter changes in BIOS Setup, press **F10** or select **Save & Exit Setup** , Press **Y** (Yes) key to agree to save the changes and exit the BIOS Setup program.



Save the changes and exit the BIOS Setup program

1. If you do not want to save the changes and exit the BIOS Setup program, select **Exit Without Saving** and press **the Y** (Yes) key to agree.



Do not save changes and exit the BIOS Setup program

You finished reading the article "**How to set up basic parameters for a computer**" edited by the [TipsMake](#) team. We hope this article has provided you with many useful tech tips and tricks. You can search for similar articles on tips and guides. Thank you for reading and for following us regularly.
