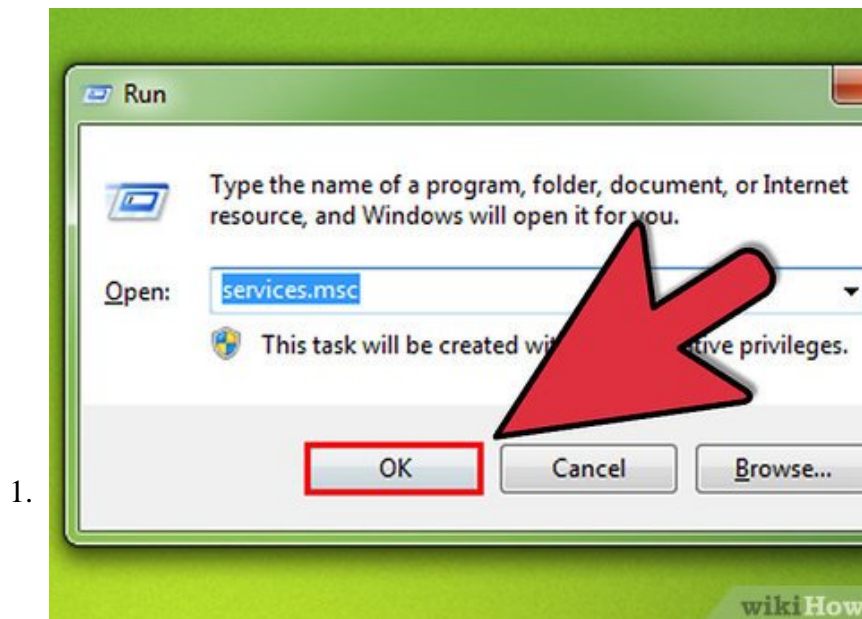


How to Set Up an Ad Hoc Peer to Peer Network

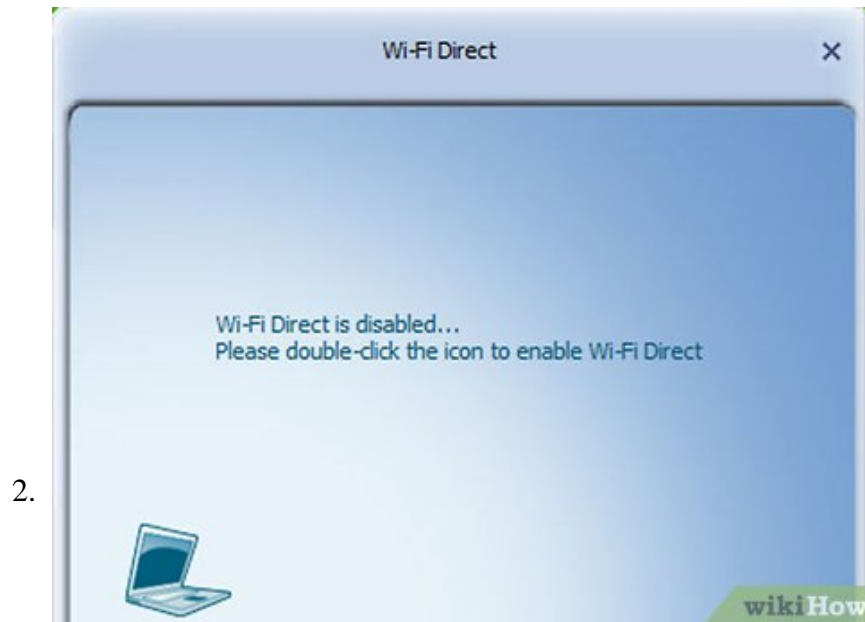
How to setup an 'AD-HOC' Peer-to-Peer Network between one Windows XP desktop computer and one Windows 7 laptop computer using two 'RALINK' USB Wireless adapters. Load the Ralink software (CD) and attach one Ralink USB adapter (hardware)...

Method 1 of 1:

Windows XP and Windows 7



- Go to Start, run, and enter 'services.msc' and hit Ok.** Under 'Name' find the following list of 'services' and make sure each one is 'Started' and set to Automatic or Manual (to change settings double click on the Name): Network Connections (Started, Manual) DSN Client (Started, Automatic) Server (Start, Automatic) COM+ Event System (Started, Automatic) TCP/IP NetBIOS Helper (Started, Automatic) *Computer Browser (Started, Automatic)
1. Workstation (Started, Automatic) SSDP Discovery (Started, Automatic)
 2. NOTE: Activate (Started, Automatic) 'Workstation' service BEFORE activating 'Computer Browser' Remember, if you change any setting in 'services.msc' you have to reboot your computer.



Now, launch the Ralink Config Utility on both computers. Go to the 'Network' heading (I). You should see your new network listed on both computers. If you don't see it, go back to 'Profile' (A), highlight your network and click 'Activate' (on each computer). Return to the 'Network' screen (I) and highlight your network name and click 'Connect' (again, do this on both computers). You should now see your network and its signal strength displayed as a colored bar graph.

You finished reading the article "**How to Set Up an Ad Hoc Peer to Peer Network**" edited by the [TipsMake](#) team. We hope this article has provided you with many useful tech tips and tricks. You can search for similar articles on tips and guides. Thank you for reading and for following us regularly.