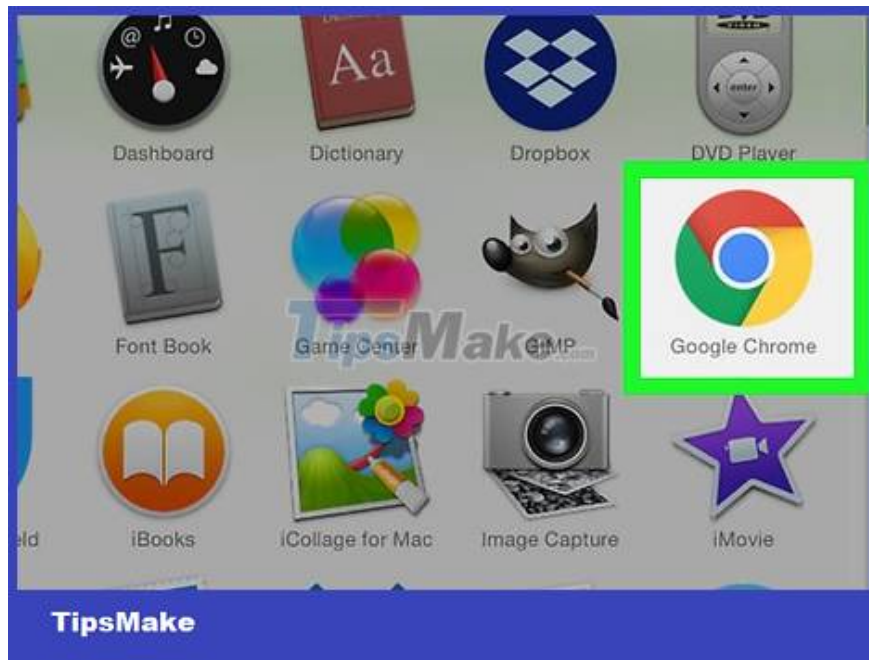


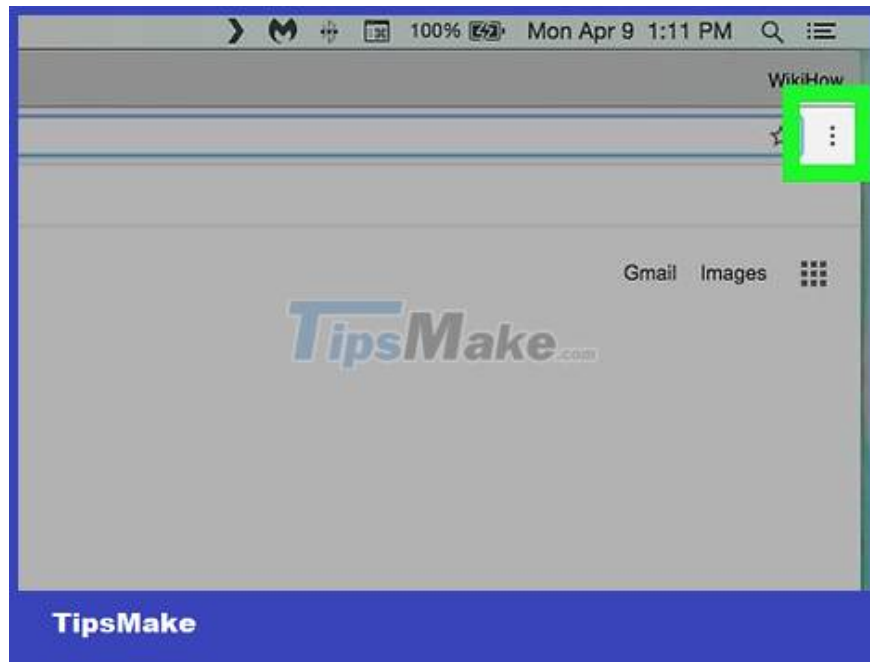
How to Set Up a Personalized Google Chrome Homepage

Today's TipsMake will guide you to set up your Google Chrome homepage by tweaking your browser settings, then you just need to use themes and extensions to change the background image along with the homepage layout. . Remember, you cannot personalize the Chrome homepage from the Google Chrome mobile app.

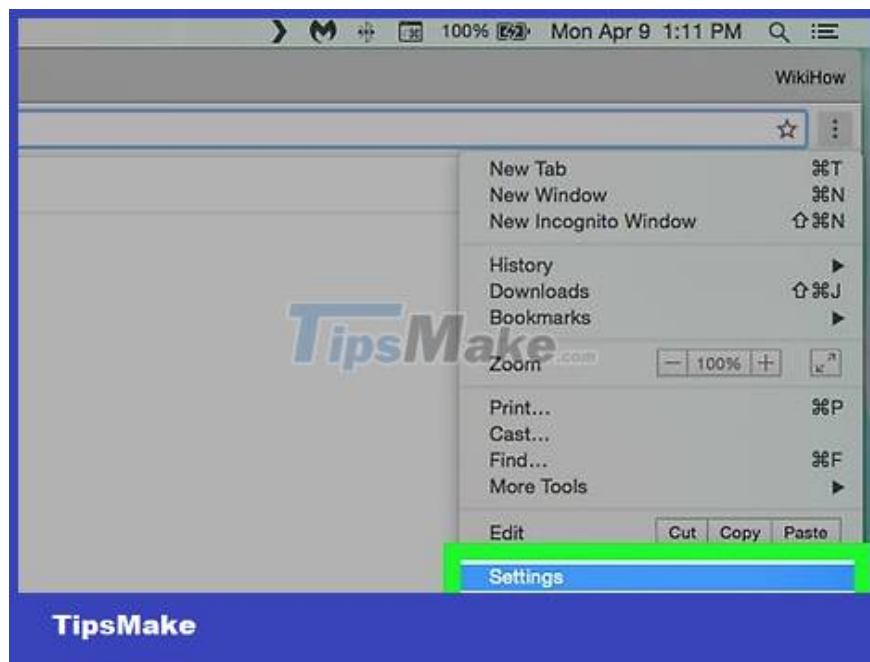
Create homepage



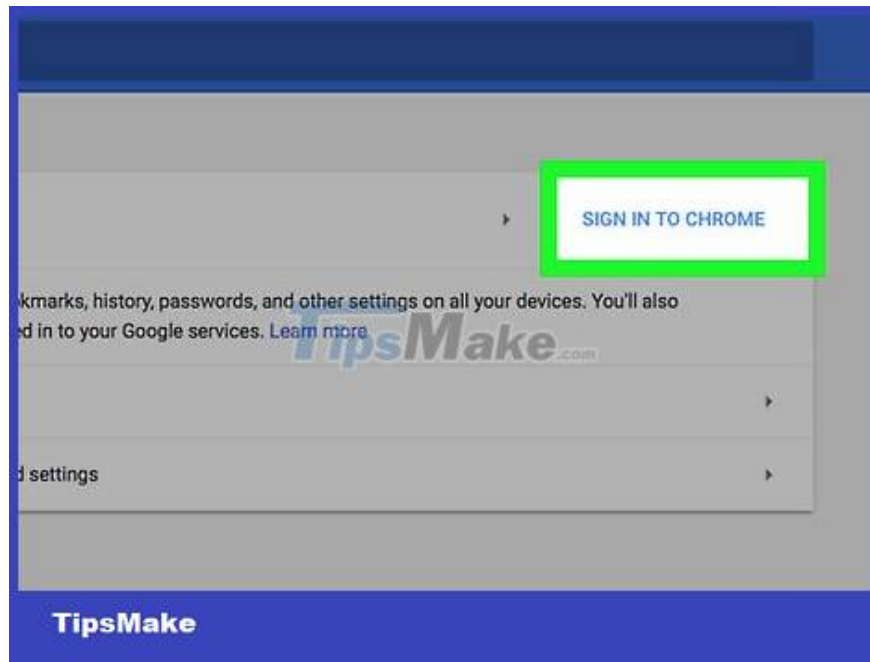
Open Google Chrome. The app has green, red, yellow and blue spherical icons.



Click the ? sign in the upper-right corner of the Chrome window. A drop-down menu will pop up.



Click Settings located in the drop-down menu. The Settings page will open.

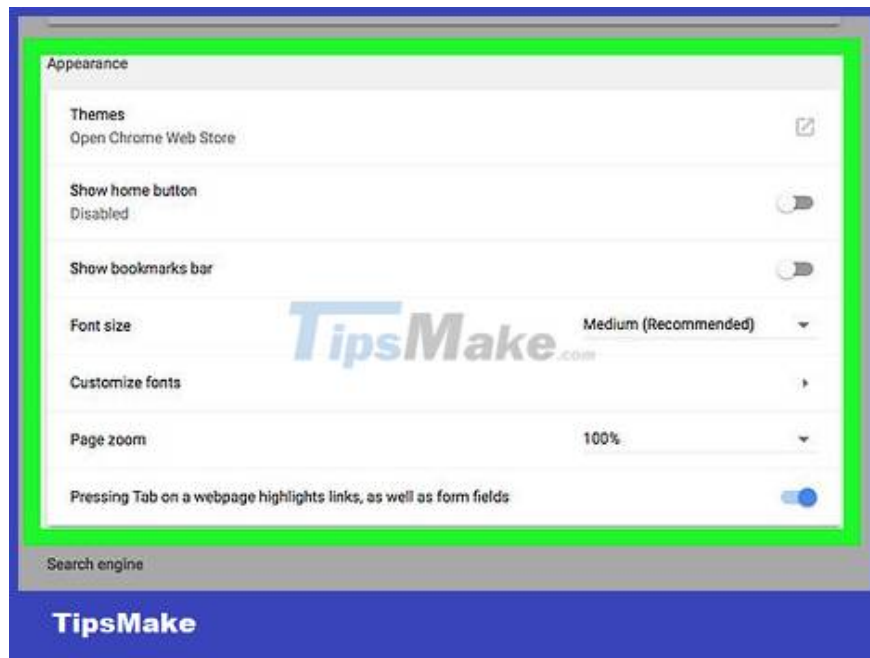


Sign in to Google Chrome if necessary. Signing in to Chrome allows you to save any subsequent settings to your Google account, which means you'll be able to access the personalized homepage on any computer where you're signed into Chrome. To do this, we need:

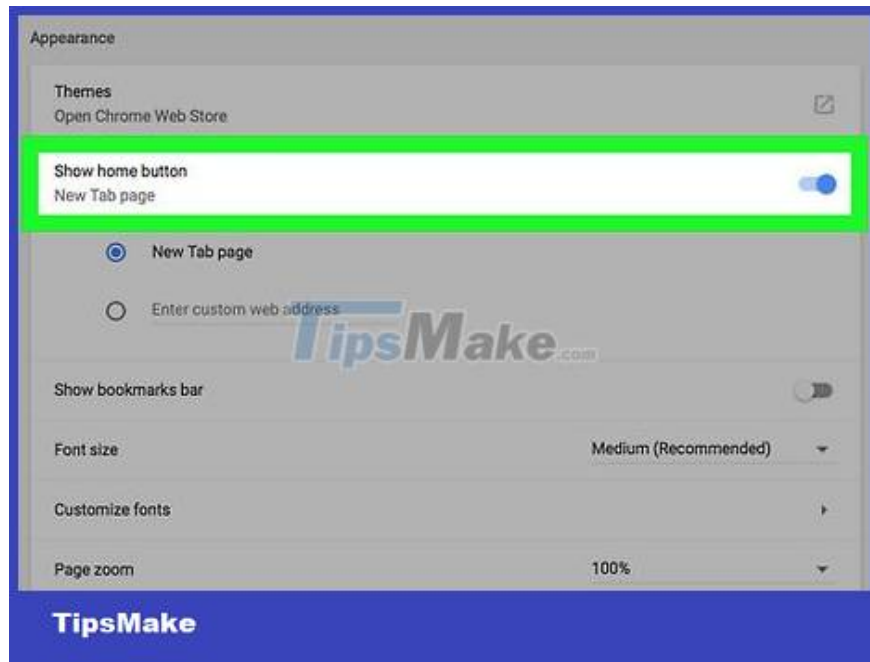
Click SIGN INTO CHROME at the top of the Settings page.

Enter email address and click NEXT (NEXT)

Enter the password and click NEXT



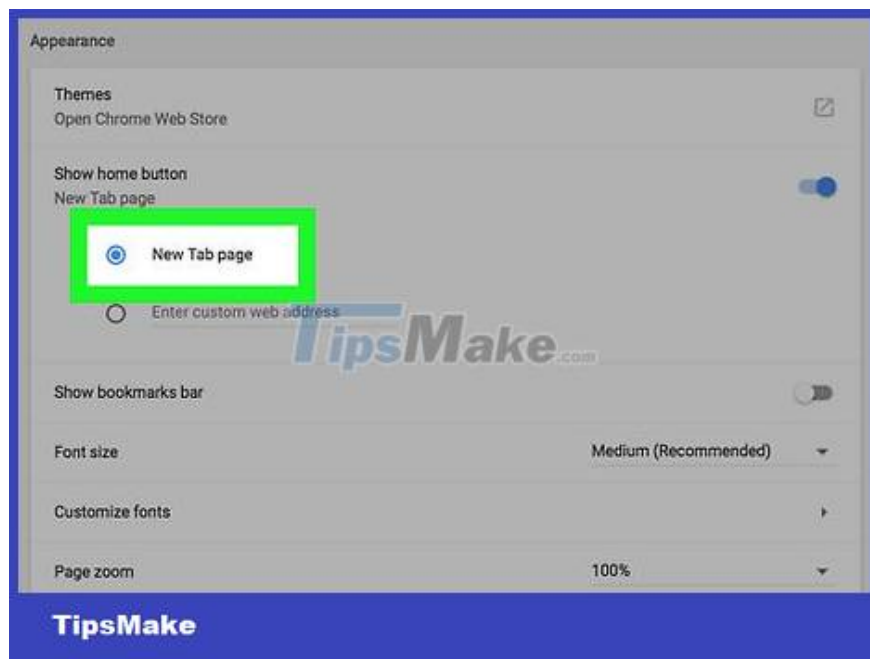
Scroll down to the "Appearance" section near the top of the Settings page.



Turn on the "Home" button. If the switch next to "Show Home button" is gray, click it to bring up the home button. The switch will turn blue.

If the switch is blue and you see the house icon in the upper-left corner of the Chrome window, the Home button is enabled.

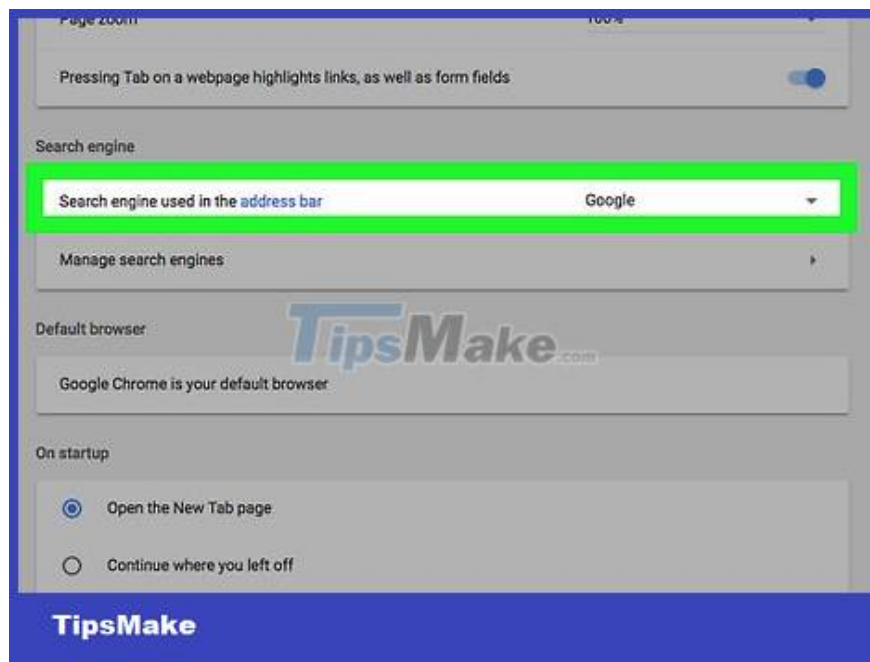
The Home button allows you to return to the home page immediately after clicking.



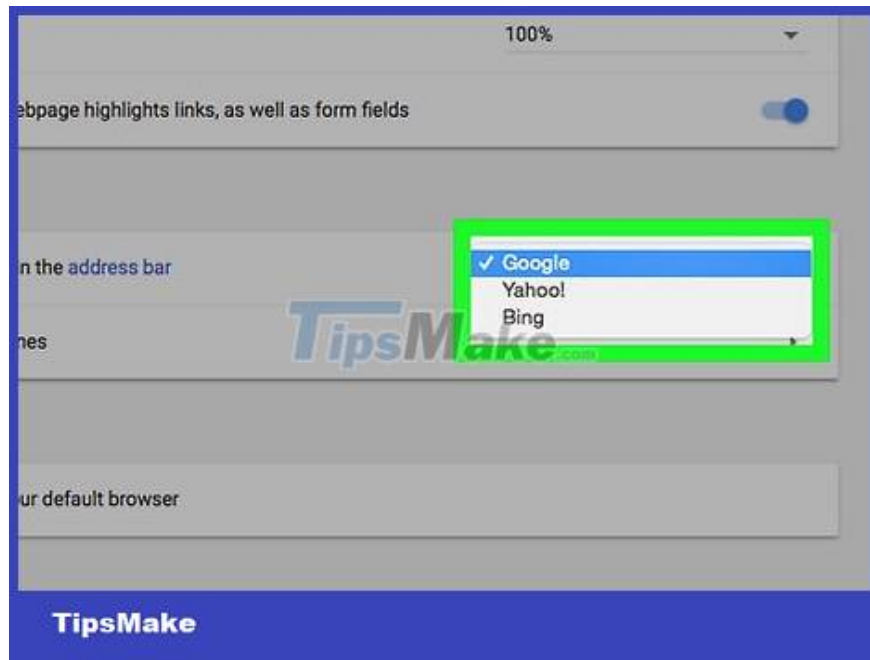
Check the "New Tab page" box just below the "Show Home button" line. The "New Tab" page will be set as the homepage; This is quite important because New Tab is the easiest page to customize.



Scroll down to the "Search engine" section near the middle of the Settings page.

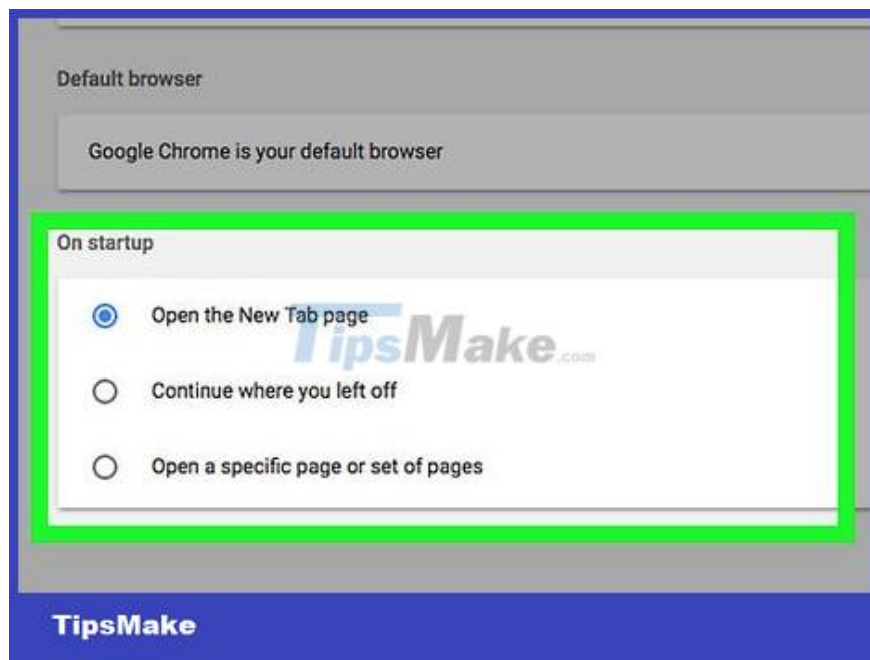


Click the "Search engine used in the address bar" box at the top of the "Search engine" section. A menu will drop down.

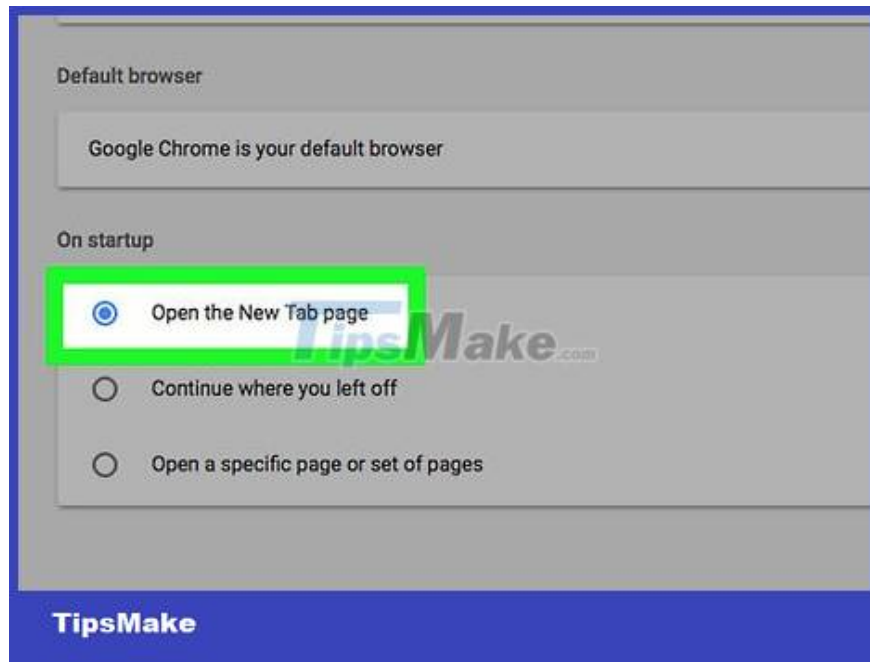


Choose the search engine that you usually use. In the drop-down menu just now, click the search engine you want to use (eg Google). You can choose one of the following tools:

1. Google
2. Bing
3. Ask
4. AOL

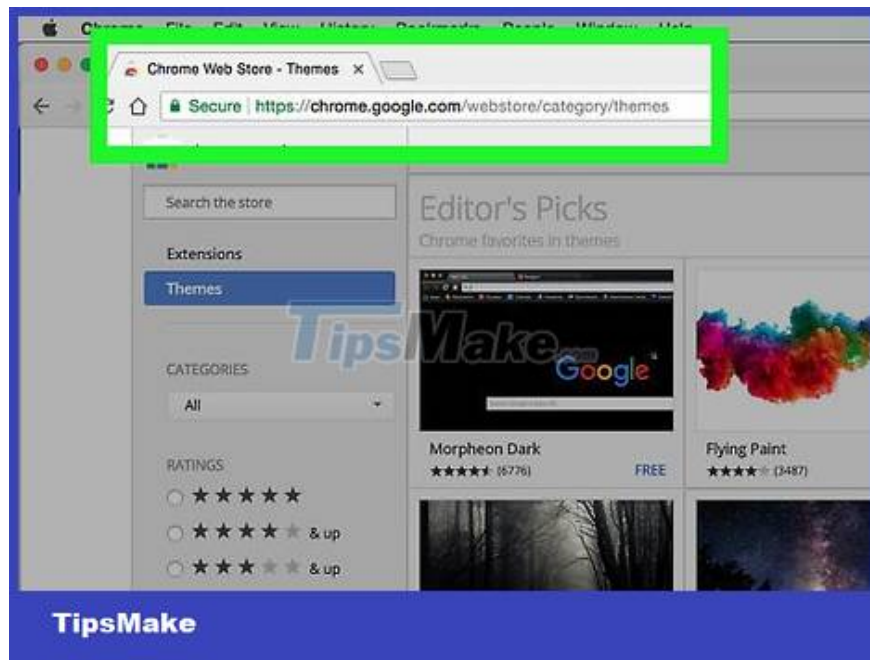


Scroll down to the "On start-up" section at the bottom of the Settings page.



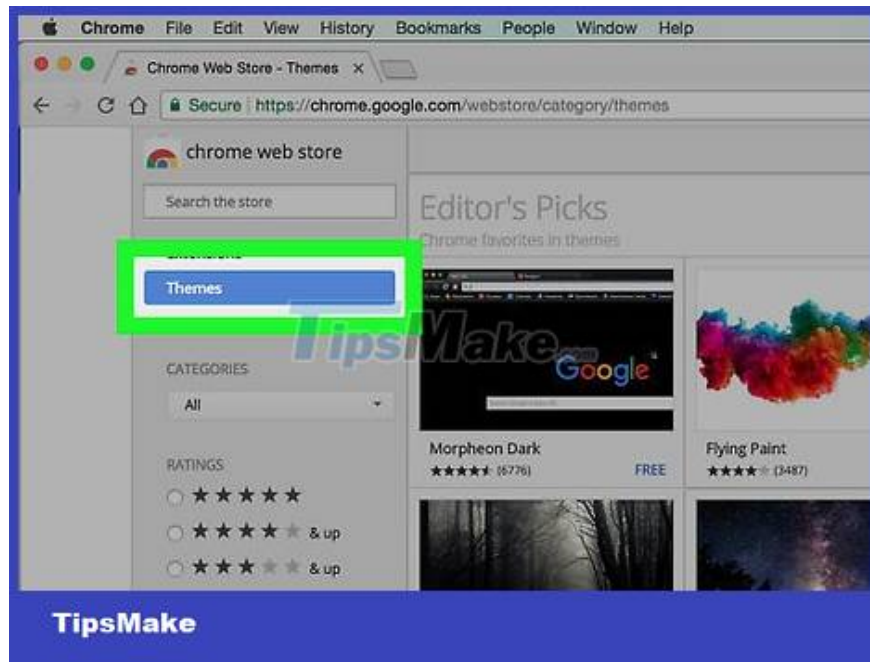
Check the box "Open the New Tab page". Thus, the personalized homepage will appear when you open Google Chrome.

More wallpapers



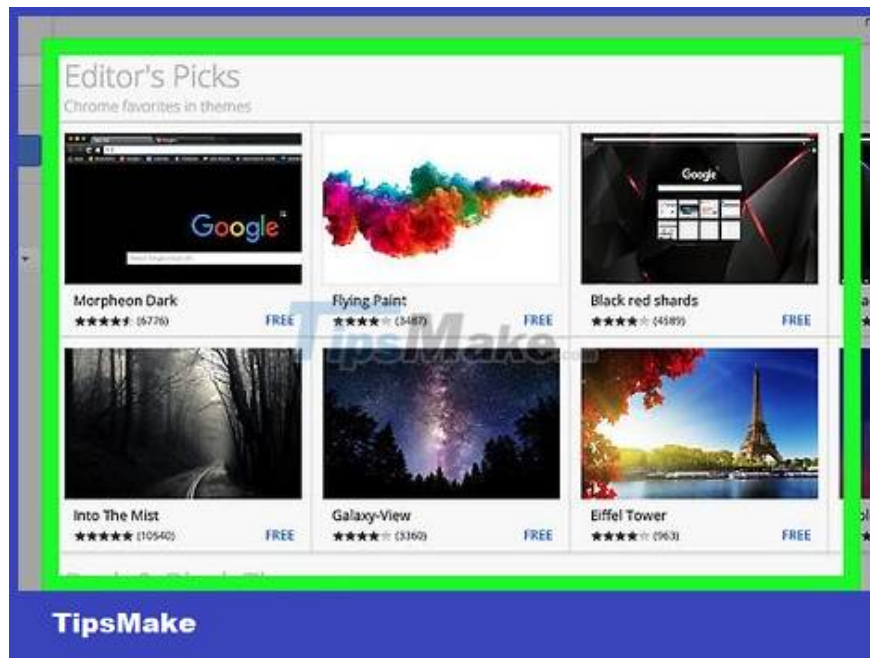
Open Chrome Web Store (Chrome Web Store). Go to <https://chrome.google.com/webstore/> using the Chrome browser. At the Chrome Web Store, you can install free wallpapers, themes, and customizations for your homepage.

You can also scroll up to the "Appearance" section and click Themes to open the Web Store.



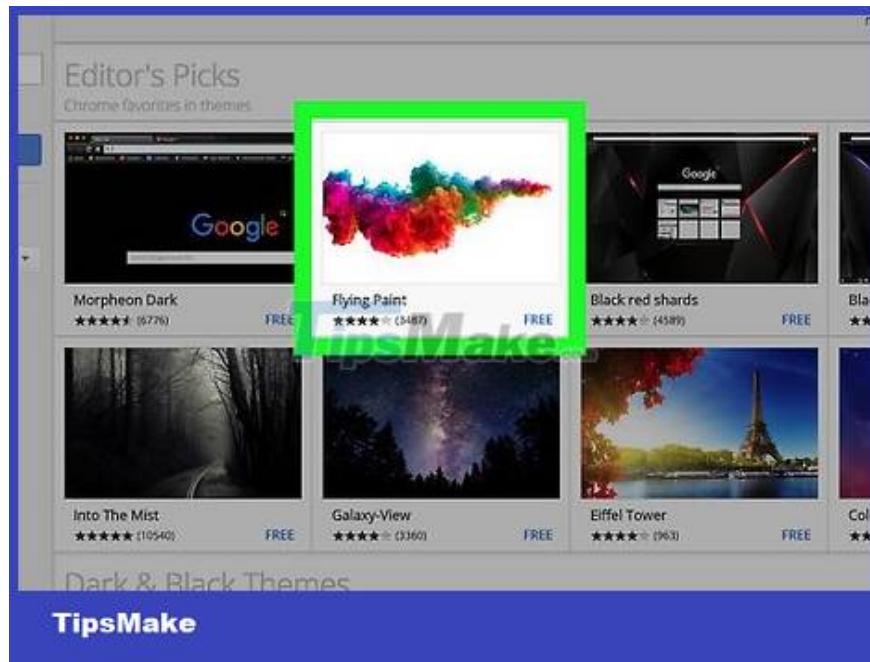
Click the Themes tab at the top left of the Chrome Web Store, just below the Search bar. A list of wallpapers and visual themes for the Chrome browser will appear.

Skip this step if you clicked the Themes button of the Settings page to open the Chrome Web Store.

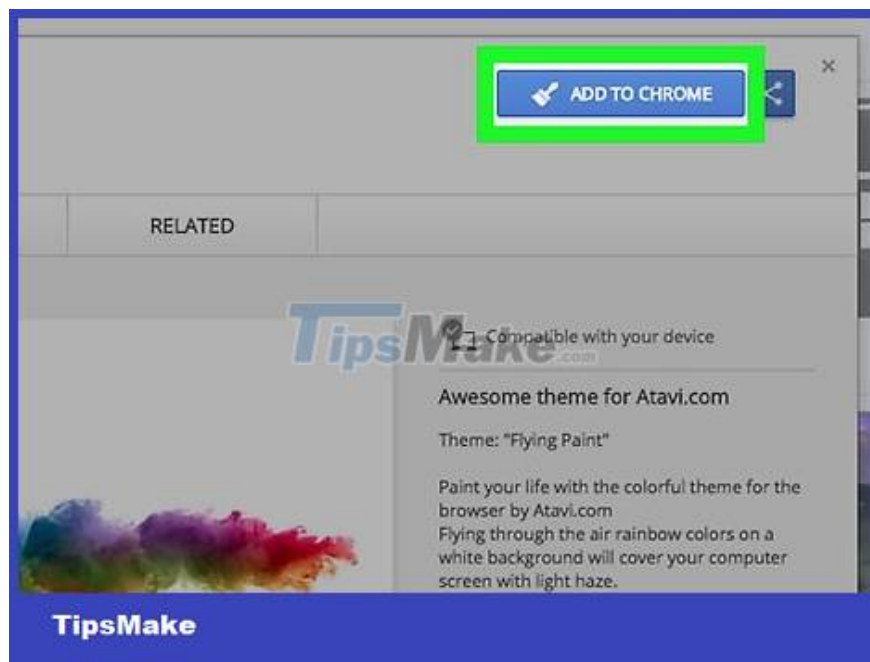


Browse the available themes. Scroll down through the image wallpapers and themes until you find a good choice.

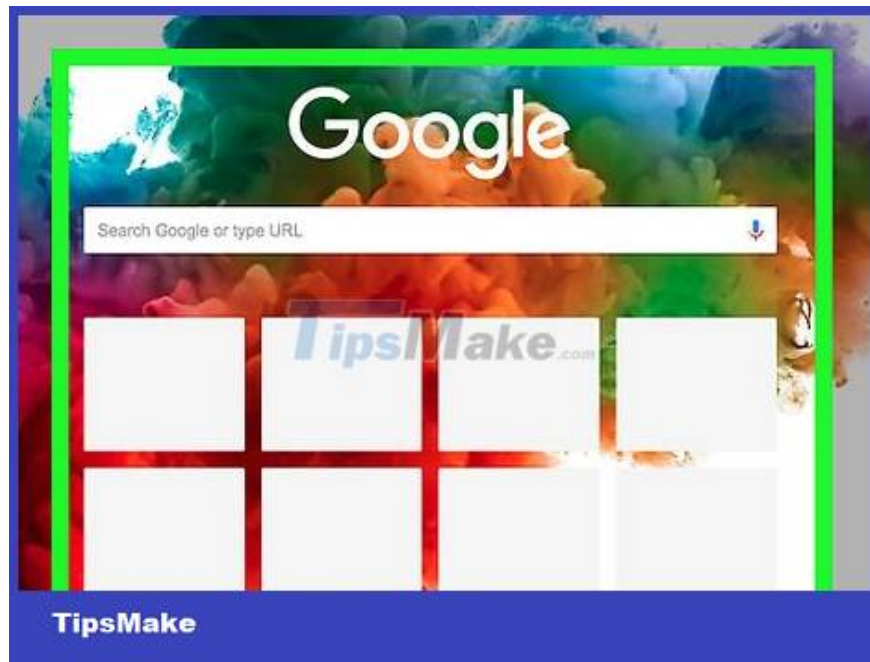
Remember, the selected theme becomes the background image for your homepage, as well as some Google pages.



Choose a topic. Click on the theme that you want to use for your homepage. The theme's page will open.

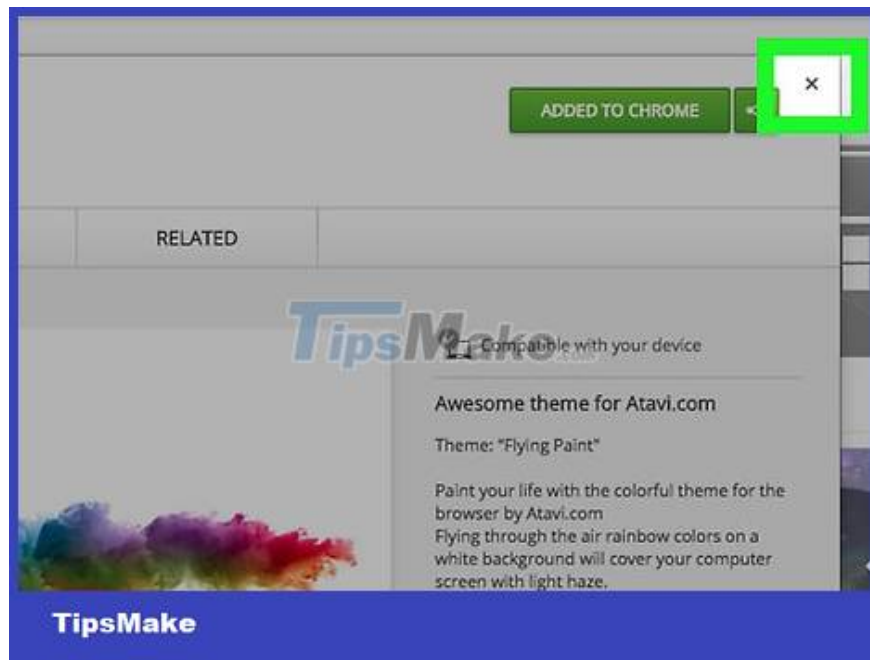


Click ADD TO CHROME . This blue button is located in the upper right corner of the theme's page.



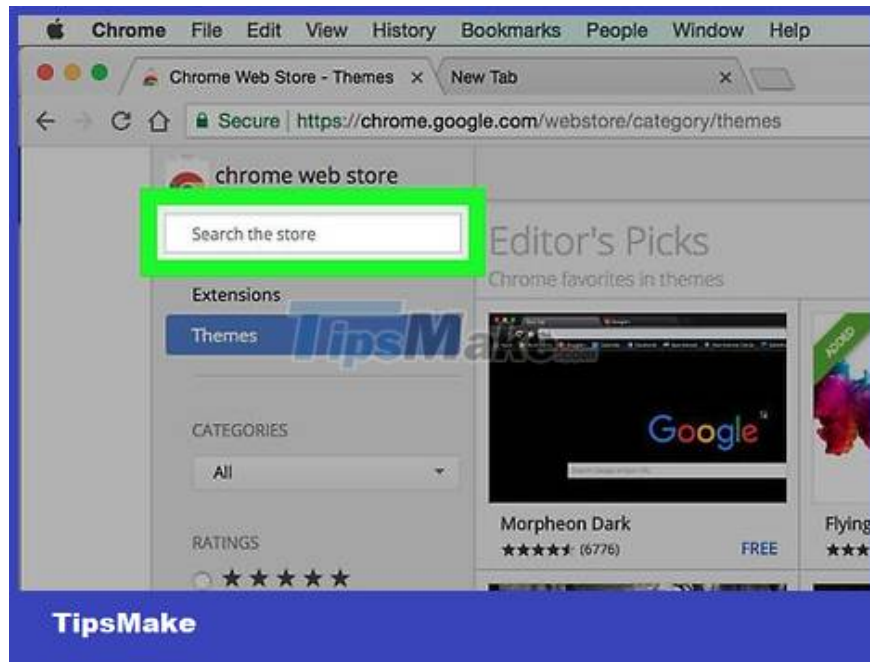
Wait for the theme to finish installing. Once the installation is complete, your browser will refresh and show the changes.

Add new layout

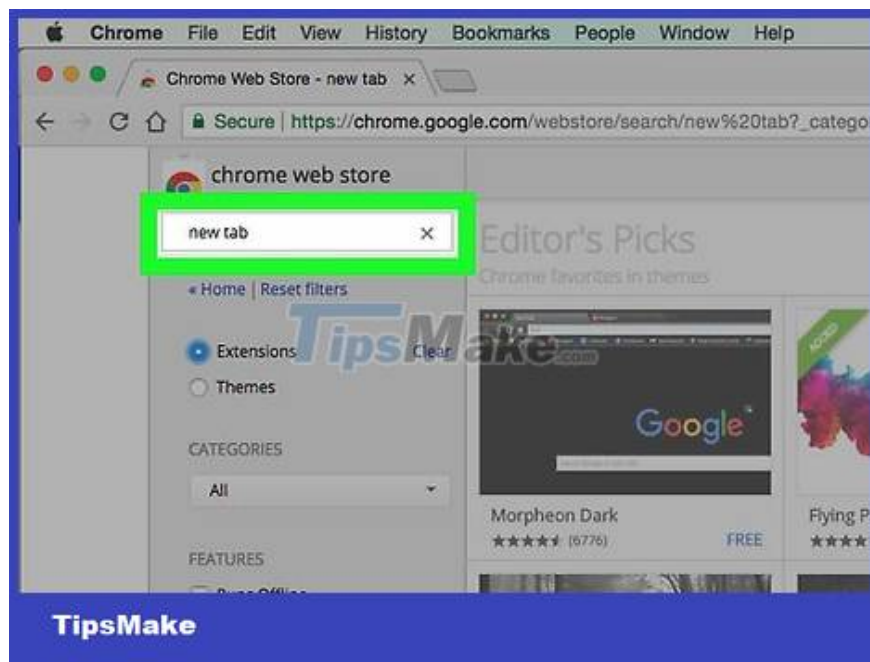


Close the selected theme window again. Click the little x in the upper right corner of the theme window to close it. Now, after you've changed the background image, you can add features and widgets to the homepage.

If you closed the Chrome Web Store, reopen it before continuing.

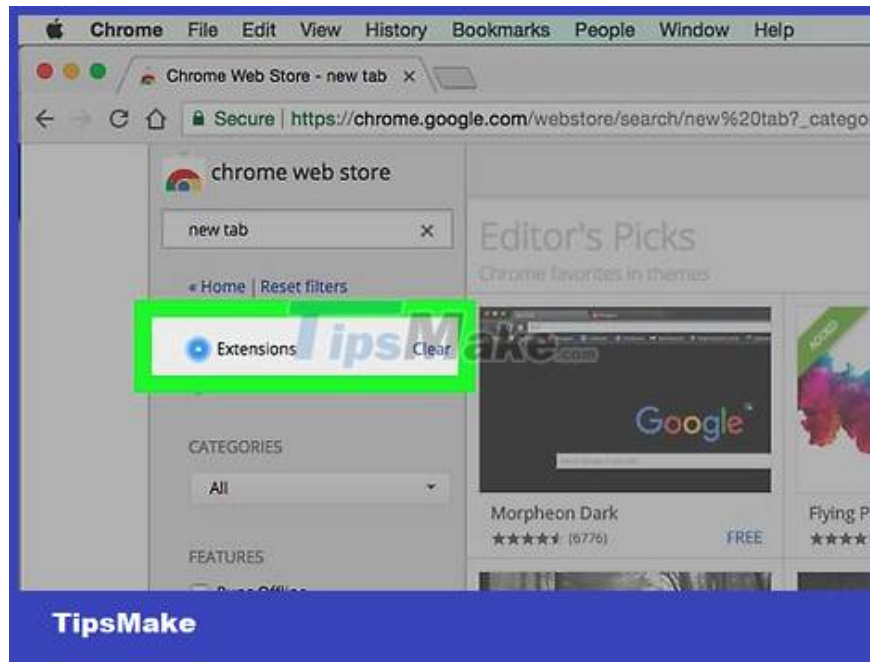


Click the search bar in the upper-left corner of the Chrome Web Store page.

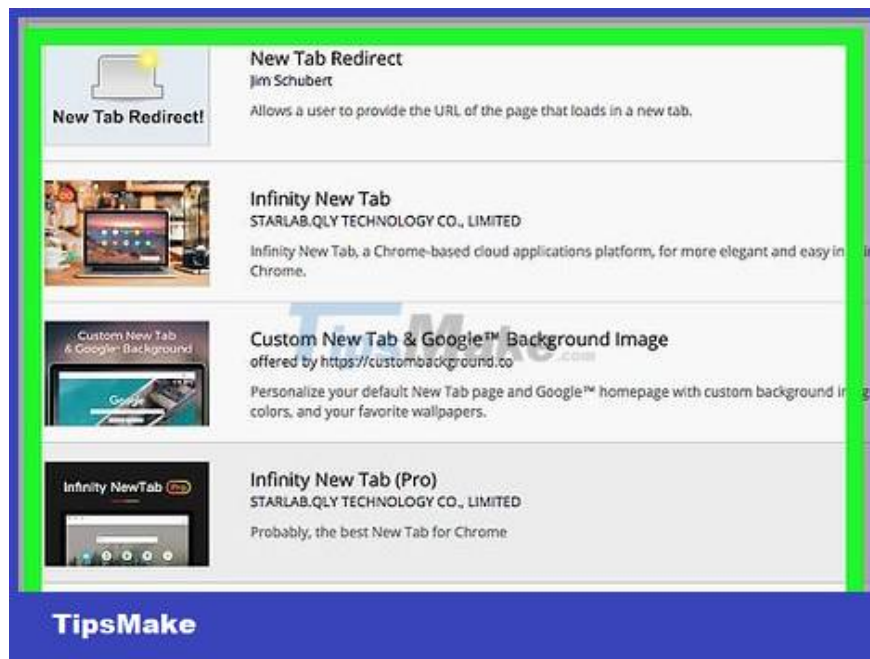


Type new tab and press ? Enter. This will search the Chrome Web Store for New Tab layouts that differ from standard Google Chrome features.

For example, the New Tab layout could include a weather widget or an updated search interface.



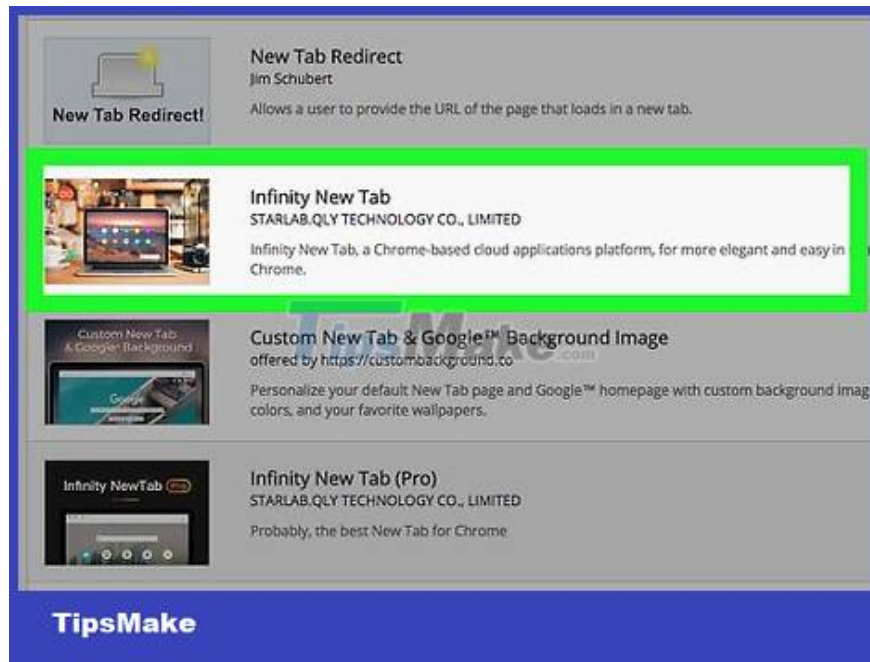
Check the "Extensions" box in the upper left corner of the page. This will ensure that you only see results for extensions.



Browse the available extensions. Scroll down on the New Tab layouts until you find the one you like.

INFINITY NEW TAB and Speed ??Dial are two examples of completely redesigned New Tab extensions for user homepages.

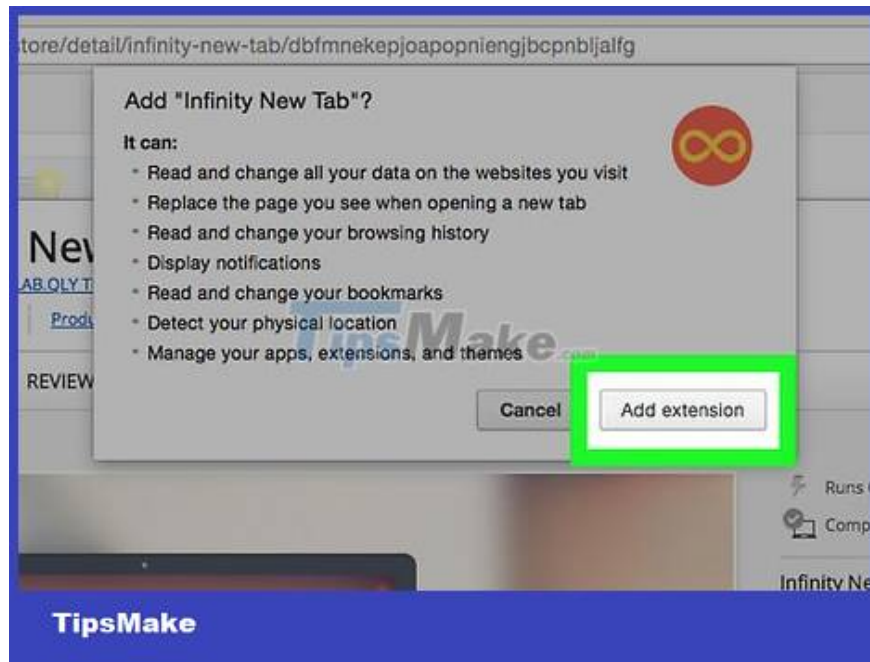
You should keep in mind that some New Tab layouts may remove the New Tab background image.



Choose a New Tab layout. Click on a New Tab layout you like to go through its information and screenshots.

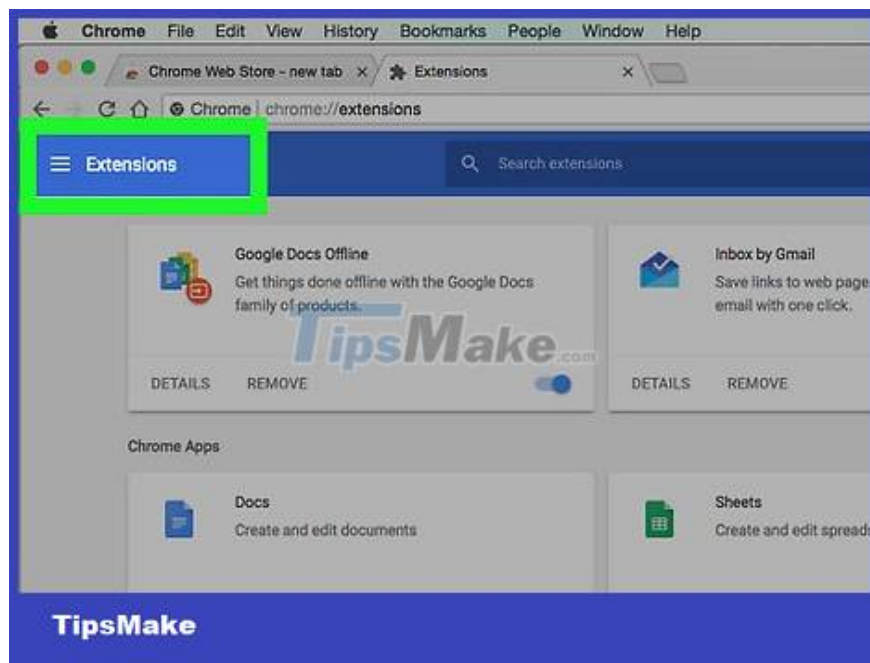


Click the blue ADD TO CHROME button located in the upper-right corner of the page.

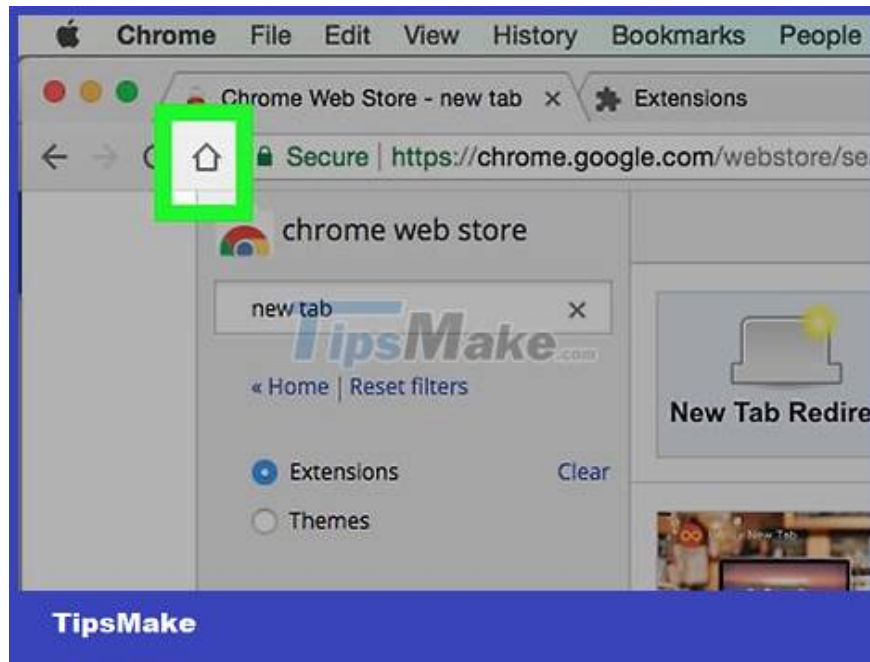


Click Add extension when it appears. As such, the extension will be added to the Google Chrome browser.

It is possible that your browser will restart once the extension is added.



Click Keep changes when it appears. If the New Tab layout extension makes significant changes to the New Tab page, you may have to accept it by clicking Keep changes when it appears in the pop-up window.



Click the Home button in the upper-left corner of the Chrome page. You will be taken to a new personalized homepage.

You can access the homepage from any page, at any time by clicking the Home button.

You finished reading the article "**How to Set Up a Personalized Google Chrome Homepage**" edited by the [TipsMake](#) team. We hope this article has provided you with many useful tech tips and tricks. You can search for similar articles on tips and guides. Thank you for reading and for following us regularly.