

# How to set the interface on the iPhone line

If you want a more prominent iPhone line interface than other iPhones, follow the instructions in this article.

The interface for iPhone, iPhone theme is limited and not as customizable as Android's. However, there are still many ways for users to customize the look of their iPhone without having to intervene deeply into the system like Jailbreak.

If you want your iPhone to stand out from the crowd, follow the interface changing tips below. The interface that you are about to implement below this article is called the "line" interface because it will turn the list of applications on the screen into separate application panes.

## Instructions for changing the bezel interface on iPhone

**Step 1:** Visit the interface link below and select the interface that suits your iPhone. In particular, the screen sizes of iPhone models such as 4 inch (iPhone SE, iPod Touch 7), 4.7 inch (iPhone 6 - iPhone 8), 5.5 inch (iPhone 6 Plus vs iPhone 8 Plus), 5.8 inch (iPhone X, Xs, 11 Pro), 6.1 inches (iPhone 11, iPhone Xr), 6.5 inches (iPhone Xs Max, iPhone 11 Pro Max).

[Link iPhone bezel interface](#)



For full screen models.

iOS 13.2-

22 sets each



## ベゼルの棚壁紙 2

ホームボタンモデル用

ベゼルと繋がる棚壁紙。

Shelf integrated with the bezel.

For Home button models.

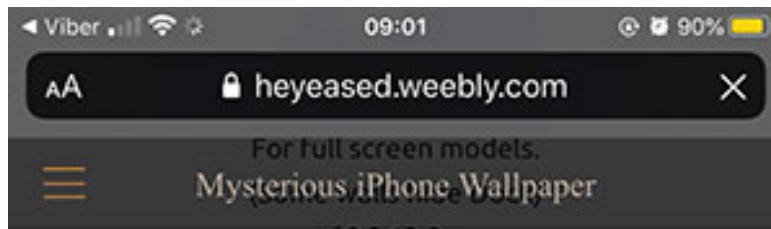


住宅展示場も事前にネット予約  
駒沢公園HG  
駒沢公園ハウジングギャラリーなら、混み合う週末もスムーズに見学できます！

開く

- Bezel Shelf 2 Plus  
 8 Plus  7 Plus  6s Plus >
- Bezel Shelf 2 mini  
 8  7  6s >
- Bezel Shelf 2 micro  
 SE  touch 7 >

**Step 2:** Besides, there is a border pattern interface only for the rabbit ears iPhone line. When you have selected the ratio of the iPhone screen to the current owner, select the wallpaper you want to display on the list.



**iOS 13.2-**  
15 sheets each



**Lacy Bezel 3 Max**  
 11 Pro Max  XS Max >

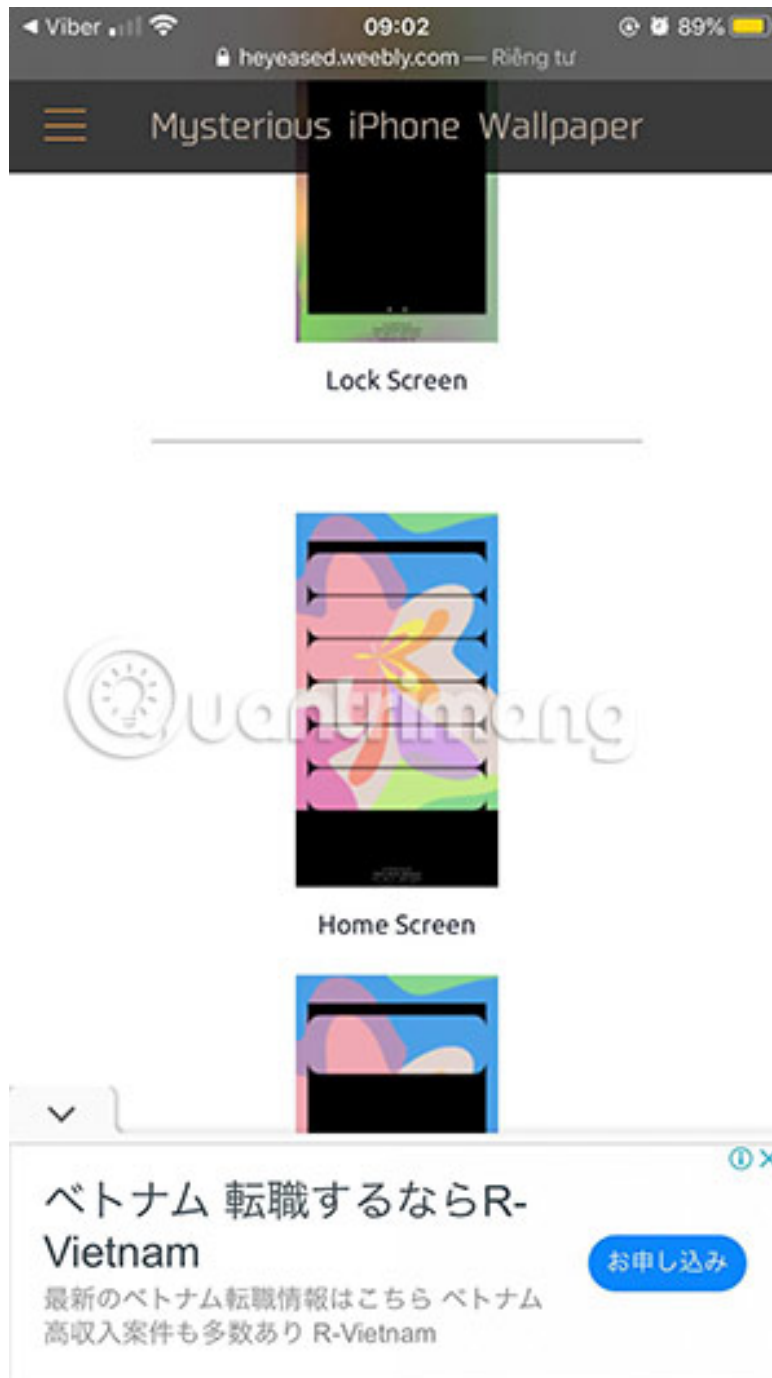
**Lacy Bezel 3 Pro**  
 11 Pro  XS  X >

**Lacy Bezel 3**  
 11  XR >

---

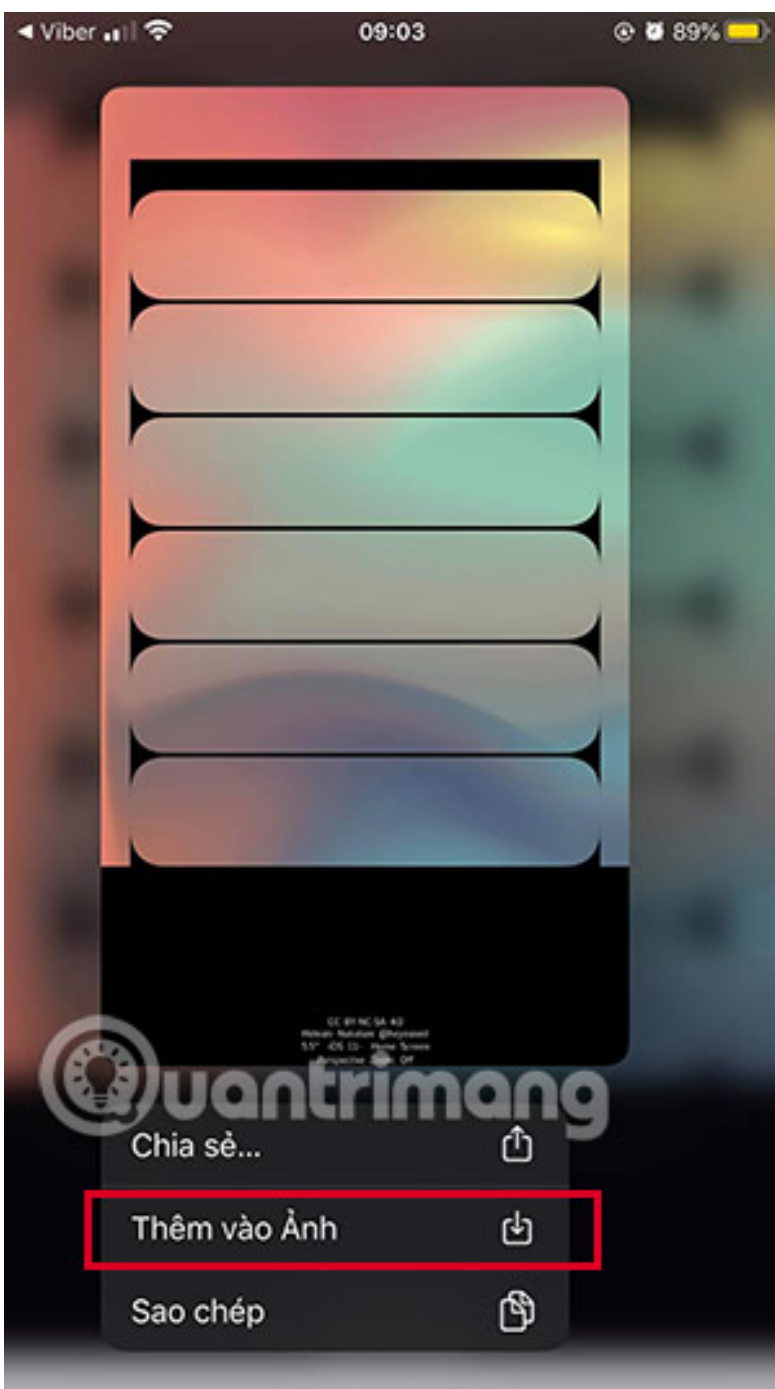
**iOS 7-13.1**





**Step 3:** If you choose a wallpaper with a pre-made color, simply save it to your computer and select it as the wallpaper for the main screen and a wallpaper of the same color but for the lock screen.

As for the black and white border beside you, you can insert your own background image.



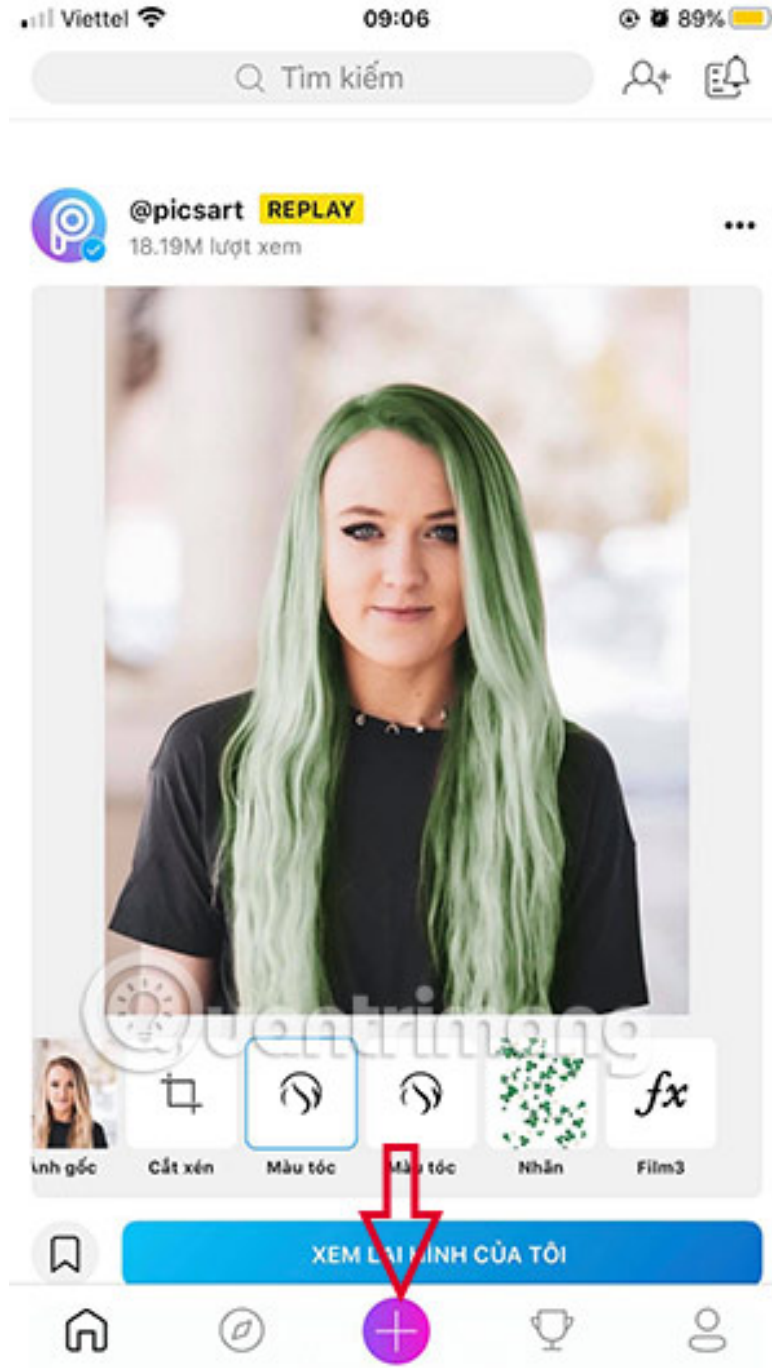


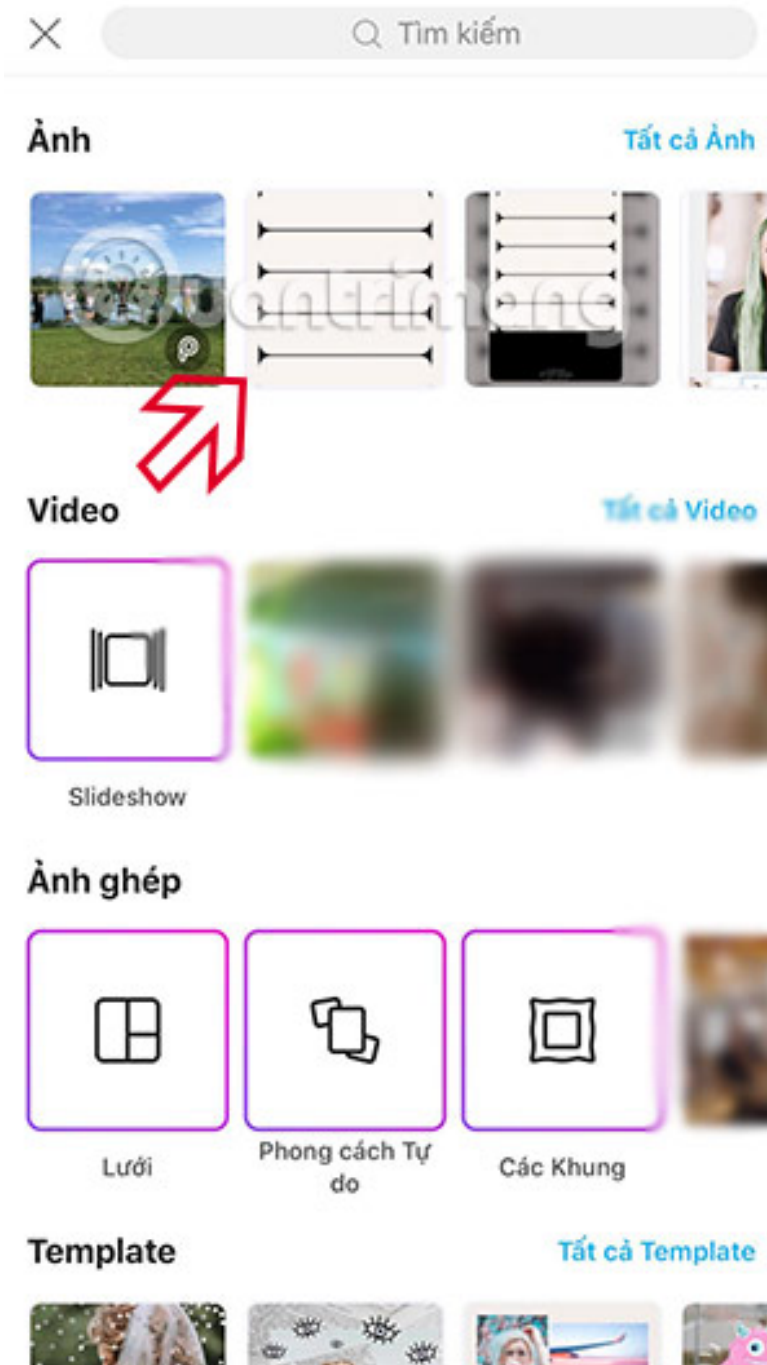
## Edit the line interface according to your wallpaper

**Step 1:** To edit the line interface according to your wallpaper, download the PicsArt application using the link below.

Download PicsArt for iPhone

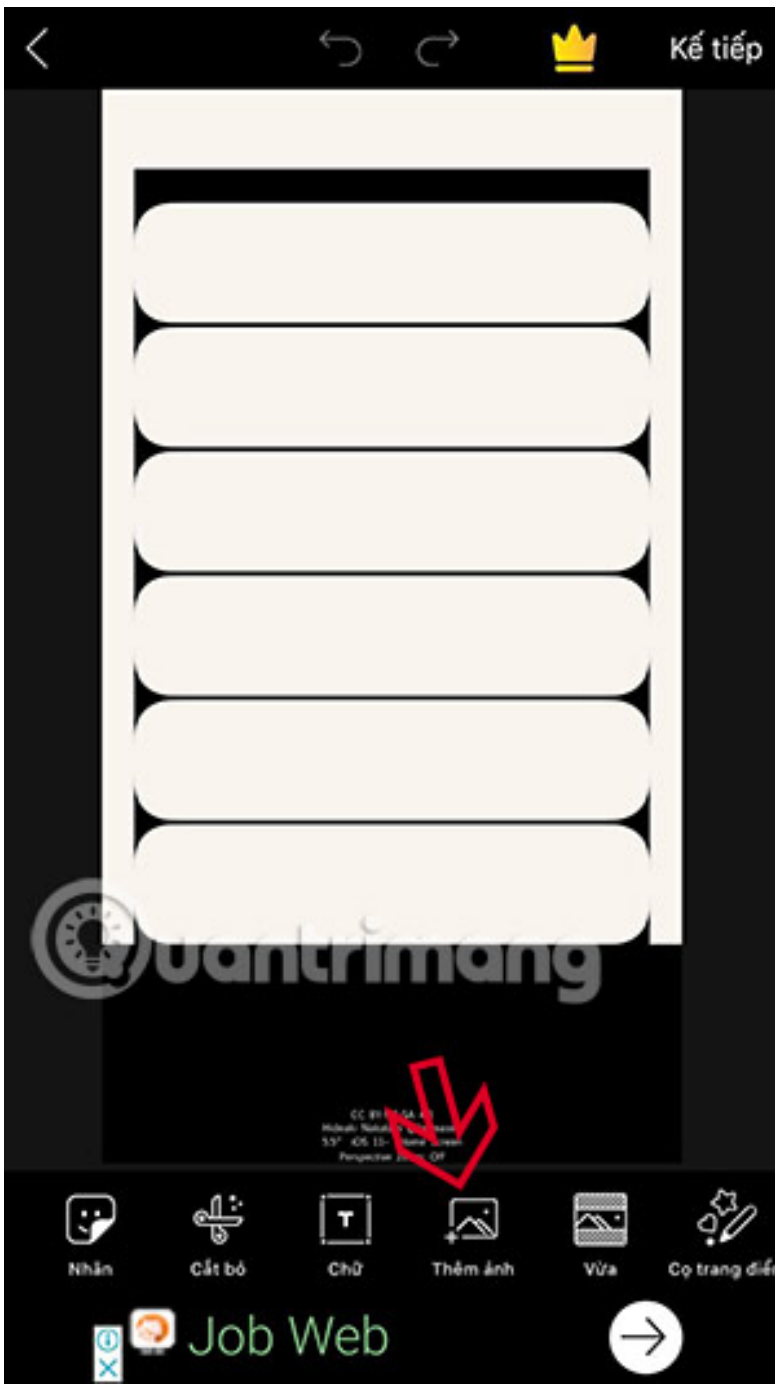
Then launch PicsArt and in the main interface, select the plus sign as in the image below and add the black border background image just downloaded above.

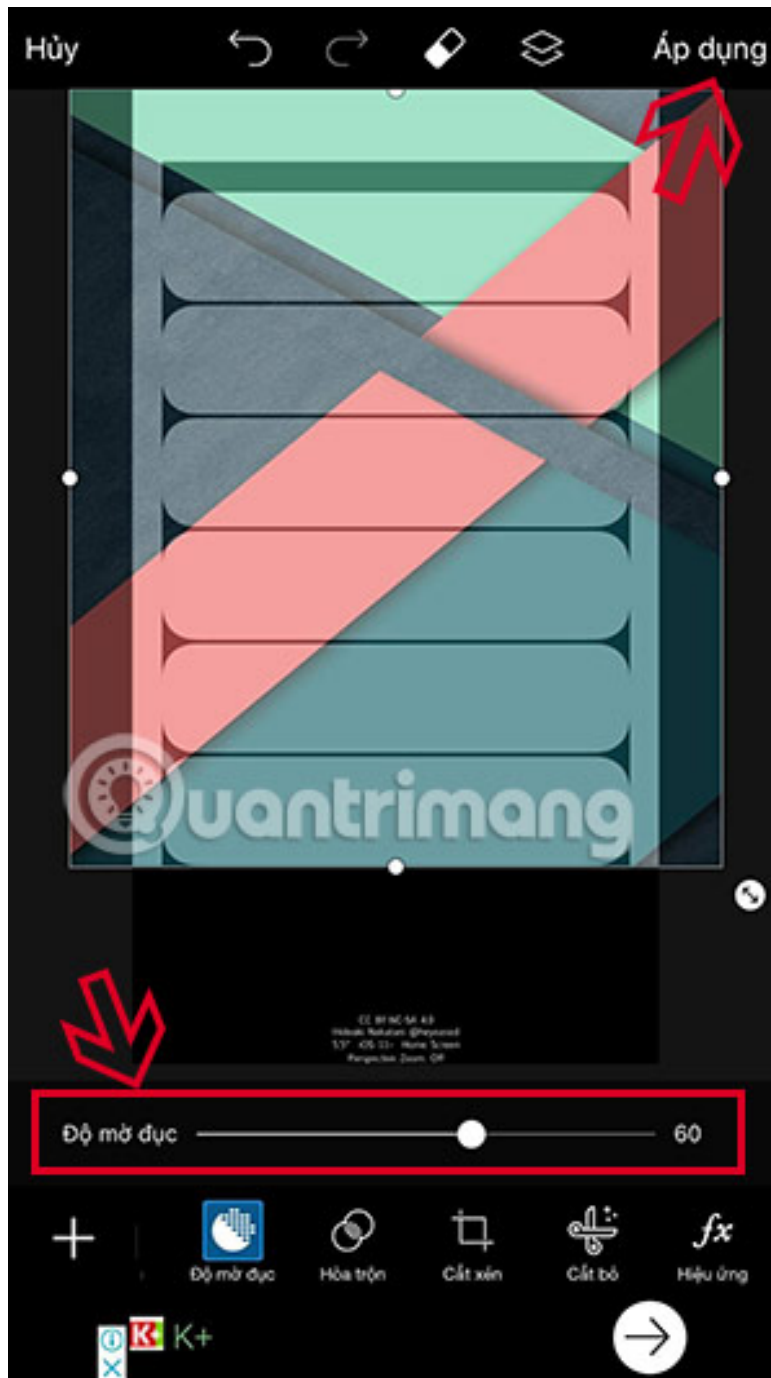




**Step 2:** Next, click Add Photo to add the background image you want to nest into the black border white picture. Choose the wallpaper you like and then keep the white dots on the 4 sides of the wallpaper to pull them out

Next, drag the opacity bar down below to see the line, then click Apply> Next in the upper right corner.





**Step 3:** Finally click save> download wallpapers to your device and go to **Settings> Wallpaper** . Select a previously saved wallpaper and set it as wallpaper for the home screen and lock screen.



## Chia sẻ



Nói một điều gì đó với #tag @tên



Replay



Vị trí



Tự doChinhsửa



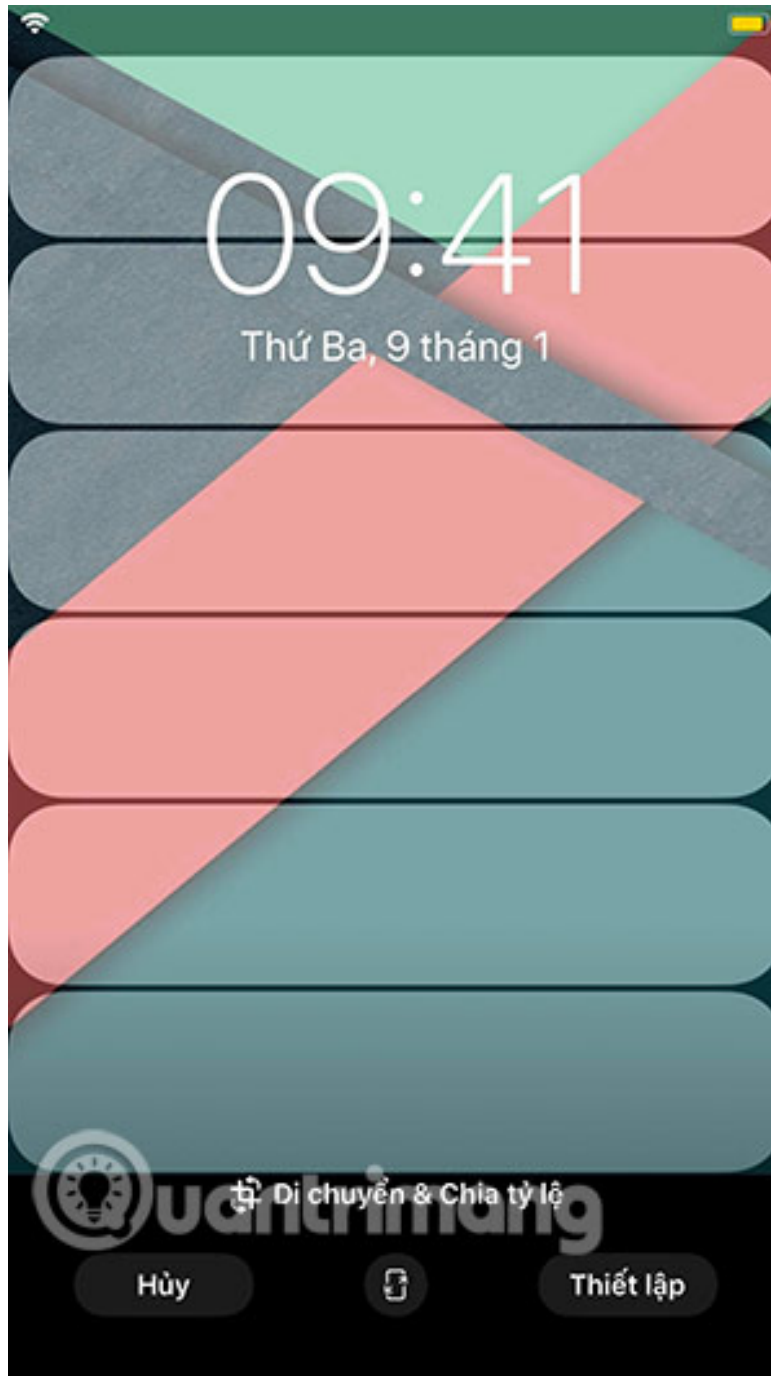
Lưu

Đăng

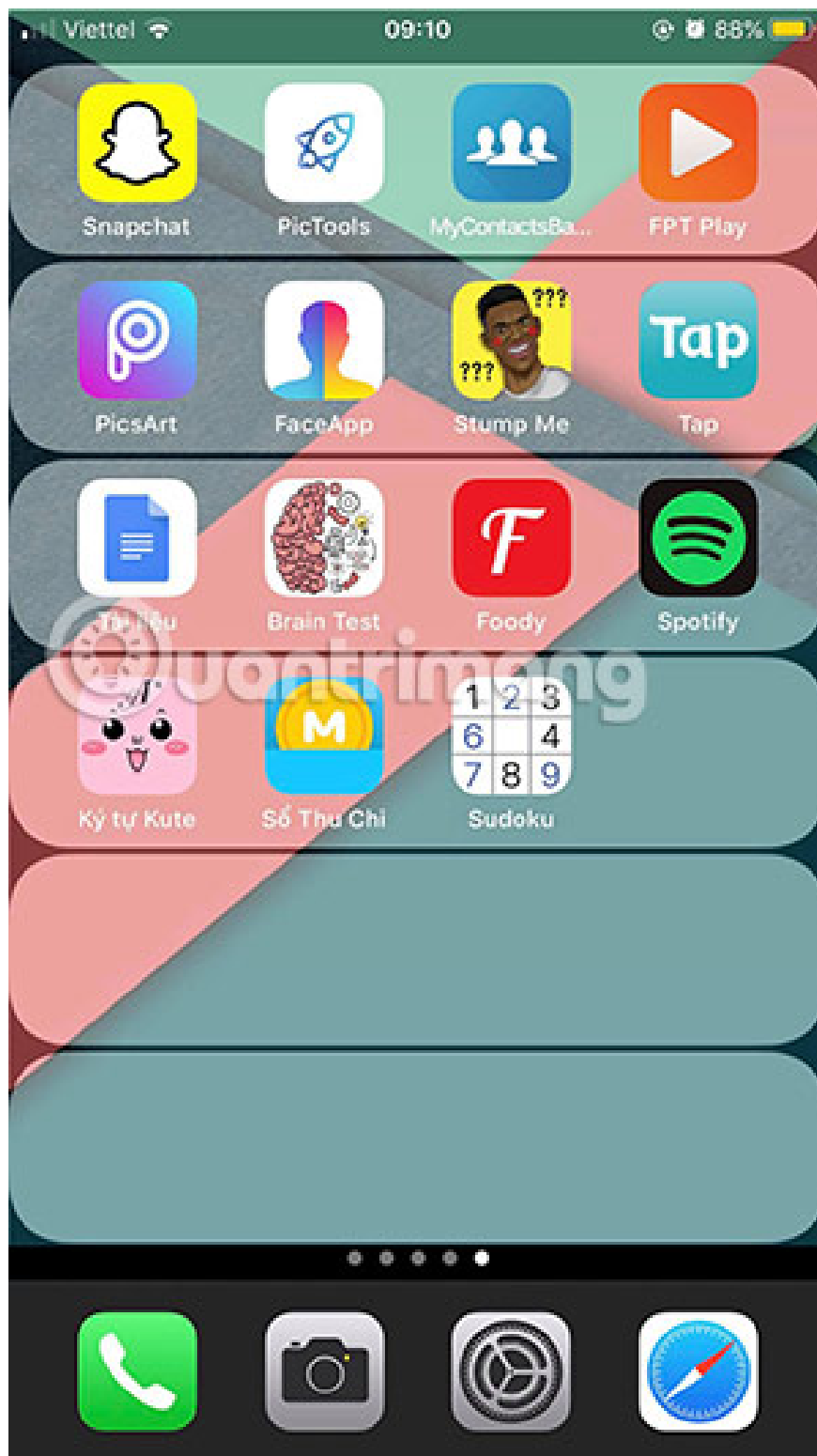


Gia Dụng Kangaroo Quà Đến 500K





Now your applications will be clearly separated by lines.



Compared to normal wallpaper, the separation of applications with the lines according to the instructions above will make your iPhone more prominent.

You finished reading the article "**How to set the interface on the iPhone line**" edited by the [TipsMake](#) team. We hope this article has provided you with many useful tech tips and tricks. You can search for similar articles on tips and guides. Thank you for reading and for following us regularly.

---

