

# How to Set Specific Country on Tor Browser

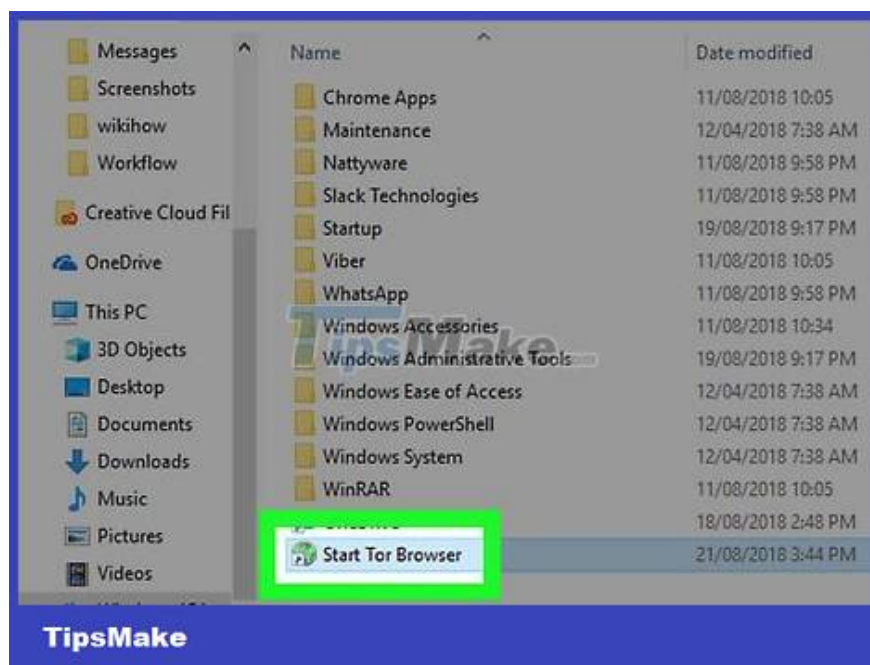
Today's TipsMake will show you how to customize the access and exit countries on the Tor desktop browser. As such, Tor will use a specific server in another country and allow you to bypass web restrictions in your current region. Note: not all countries allow the use of Tor, so certain countries may not have access and exit options.

## On Windows

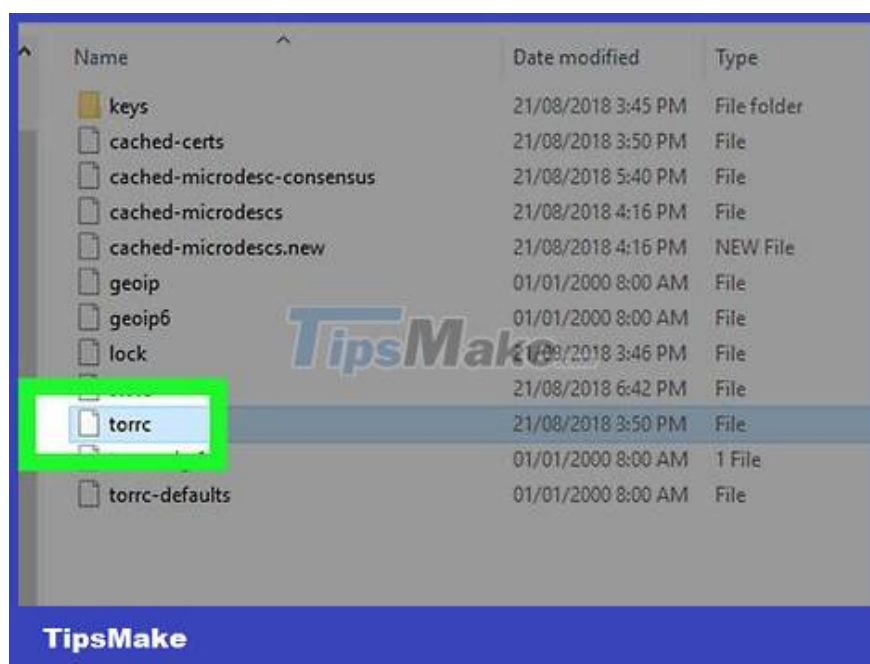


You need to make sure that Tor has been started at least once. In order for the file "torrc" (which determines the visibility of the exit node on Tor) to appear, the browser needs to be launched on the computer at least once.

You can launch Tor by double-clicking the browser icon and then selecting Connect.

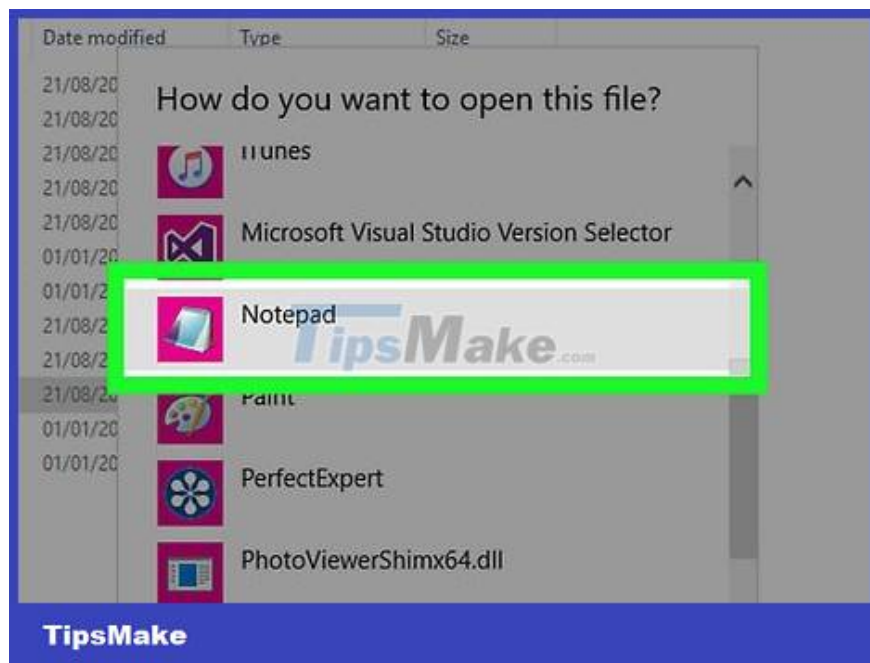


Open the Tor folder. Go to the folder where you installed Tor and double-click the browser to open it.

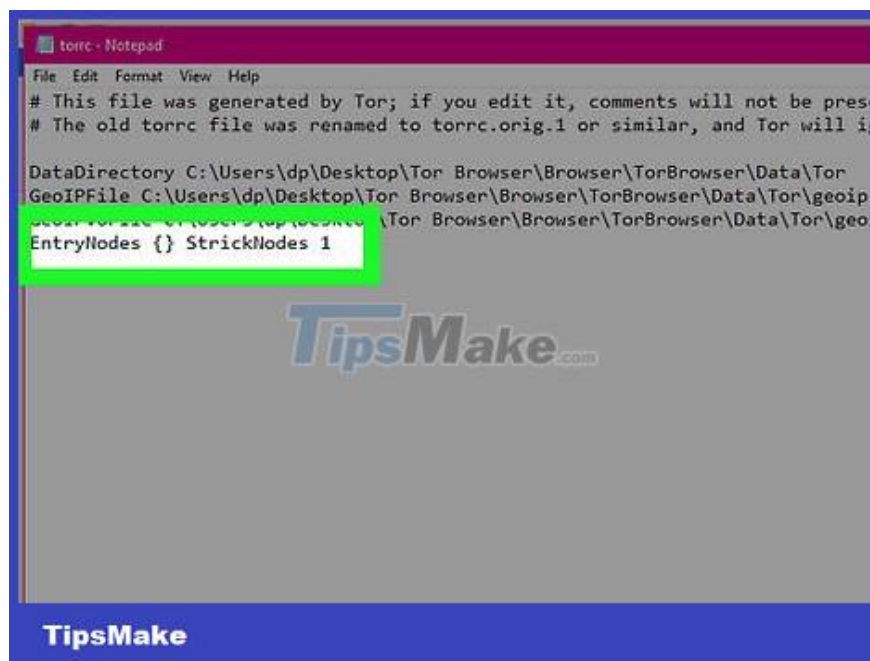


Find the file "torrc". You can navigate to the "torrc" file in the Tor installation directory by:

1. Double-click the Browser folder.
2. Double-click the TorBrowser folder.
3. Double-click the Data folder.
4. Double-click the Tor folder.



Double click to open "torrc" document with Notepad. After you double click on the "torrc" file, the "Open with" window will appear, select Notepad and click Open. You should be able to edit the contents of the "torrc" file.



Add the line "EntryNodes". Place your cursor below the last line in the document, then type EntryNodes {} StrictNodes 1 and then press ? Enter.

```
torrc - Notepad
File Edit Format View Help
# This file was generated by Tor; if you edit it, comment
# The old torrc file was renamed to torrc.orig.1 or simil

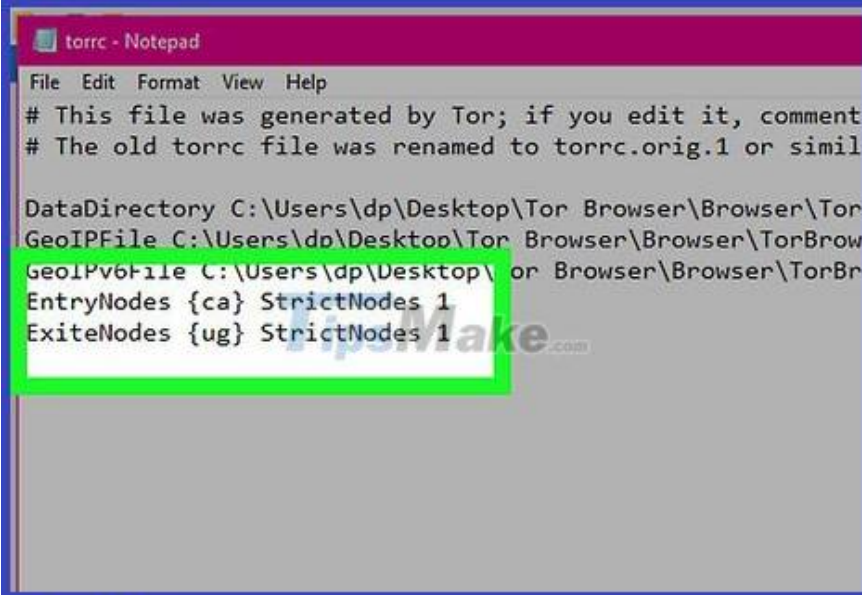
DataDirectory C:\Users\dp\Desktop\Tor Browser\Browser\Tor
GeoIPFile C:\Users\dp\Desktop\Tor Browser\Browser\TorBrow
GeoIPv6File C:\Users\dp\Desktop\Tor Browser\Browser\TorBr
ExitNodes {ca} StrictNodes 1
ExitNodes {ug} StrictNodes 1
```

Add the line "ExitNodes". You type ExitNodes { } StrictNodes 1 and press ? Enter.



Find the access and exit country codes. Go to <https://web.archive.org/web/20180328074444/http://www.b3rn3d.com/blog/2014/03/05/tor-country-codes/> using a desktop web browser, scroll down titled "List of country codes for Tor", then find the code for the country you want to use as the access and exit node.

For example, if you want your Tor browsing session to start in Canada and end in the Republic of Uganda, look for the codes for "Canada" (ca) and "Uganda" (ug).



```
torrc - Notepad
File Edit Format View Help
# This file was generated by Tor; if you edit it, comment
# The old torrc file was renamed to torrc.orig.1 or simil

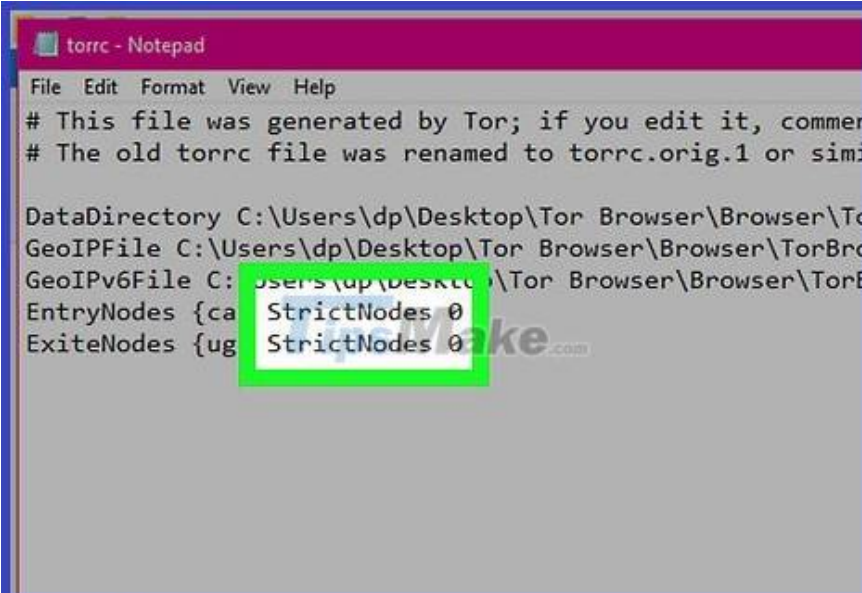
DataDirectory C:\Users\dp\Desktop\Tor Browser\Browser\Tor
GeoIPFile C:\Users\dp\Desktop\Tor Browser\Browser\TorBro
GeoIPv6File C:\Users\dp\Desktop\Tor Browser\Browser\TorBr
EntryNodes {ca} StrictNodes 1
ExitNodes {ug} StrictNodes 1
```

TipsMake

Enter the country code to access and exit. Enter the code for the country you want to use to start your browsing session between the curly braces { } to the right of the "EntryNodes" line, then do the same for the exit country in the "ExitNodes" line. For example, if you want to access in Canada and exit in Uganda, you would enter the following:

```
EntryNodes {ca} StrictNodes1
```

```
ExitNodes {ug} StrictNodes1
```

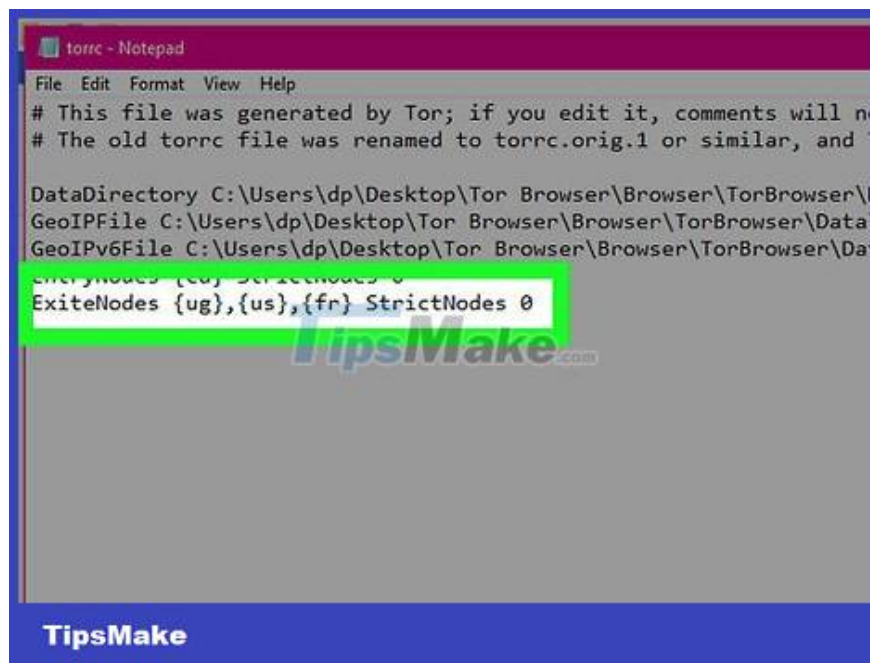


```
torrc - Notepad
File Edit Format View Help
# This file was generated by Tor; if you edit it, commer
# The old torrc file was renamed to torrc.orig.1 or simi

DataDirectory C:\Users\dp\Desktop\Tor Browser\Browser\To
GeoIPFile C:\Users\dp\Desktop\Tor Browser\Browser\TorBro
GeoIPv6File C:\Users\dp\Desktop\Tor Browser\Browser\TorB
EntryNodes {ca} StrictNodes 0
ExitNodes {ug} StrictNodes 0
```

TipsMake

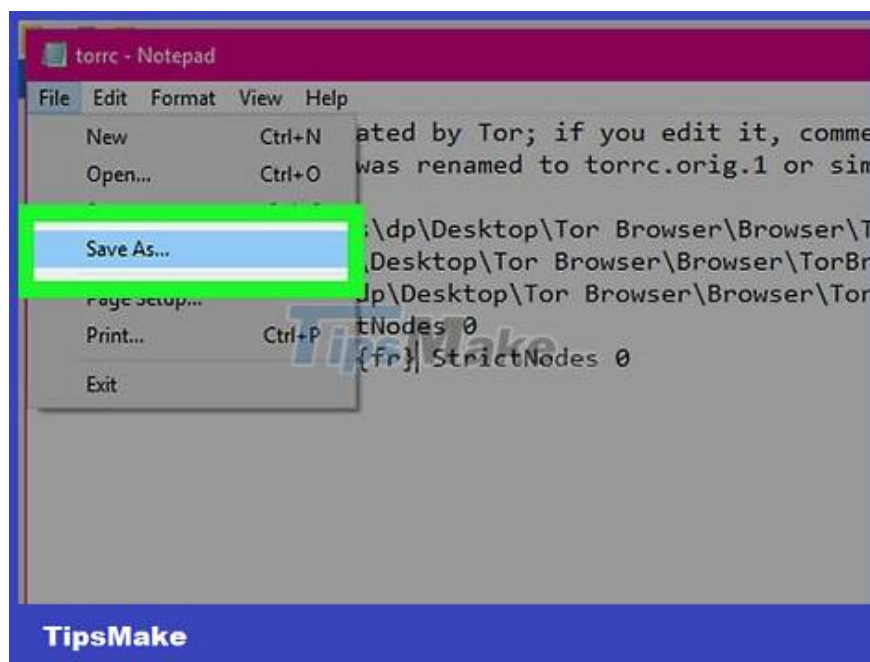
Consider disabling the strict node. You can proceed to replace StrictNodes 1 with StrictNodes 0 to ensure that Tor will still use a different country code if the specified country does not work.



Add more country options to strict network node. If you want a strict node enabled with an access node and/or an exit node, consider adding multiple countries instead of just one. You can add by typing each country code in a pair of curly braces and delimiting them with commas. For example, to add the United States and France to the Uganda "ExitNodes" line, you would enter:

```
ExitNodes {ug},{us},{fr} StrictNodes 1
```

You need to make sure that there are no spaces between each country within angle brackets.



Replace the original "torrc" file with the updated file. This will ensure that the browser's country settings are saved:

Click File (File)

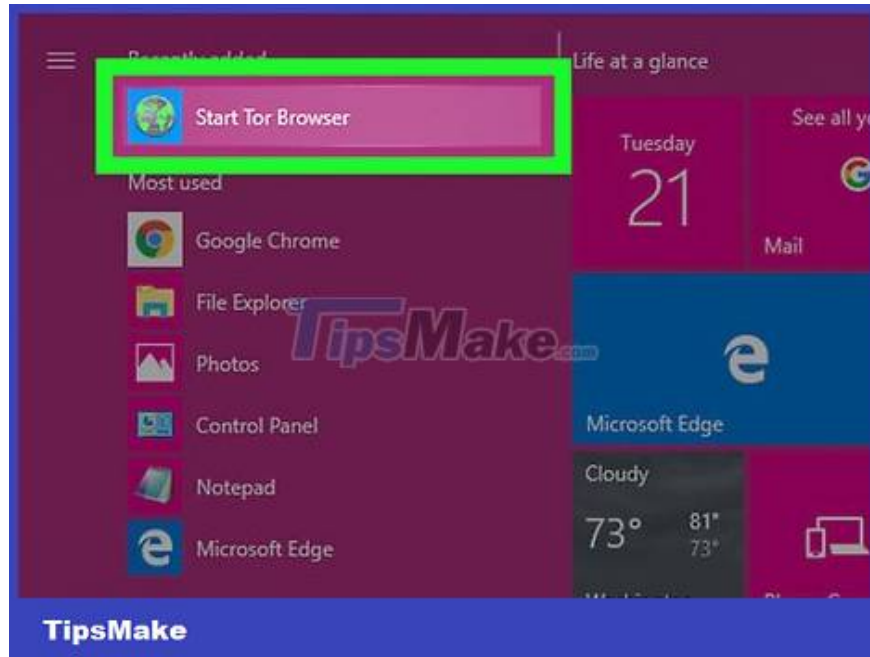
Click Save As. (Save As)

Click the "Save as type" drop-down box and select All Files.

Click the file "torrc" in the main window to select it.

Click Save

Click Yes when the option appears.



Open Tor. Tor may take a few seconds longer to launch at this point, especially if you select a remote country.



Check the access and exit network nodes of the Tor circuit. Visit any website (for example, <https://www.google.com/>) using the Tor browser, then click the onion icon in the top left of the page. A drop-down menu titled "Tor circuit for this site" will appear with the browser, the access node, the intermediate connection, the exit node, and the Internet data, all listed from top to bottom.

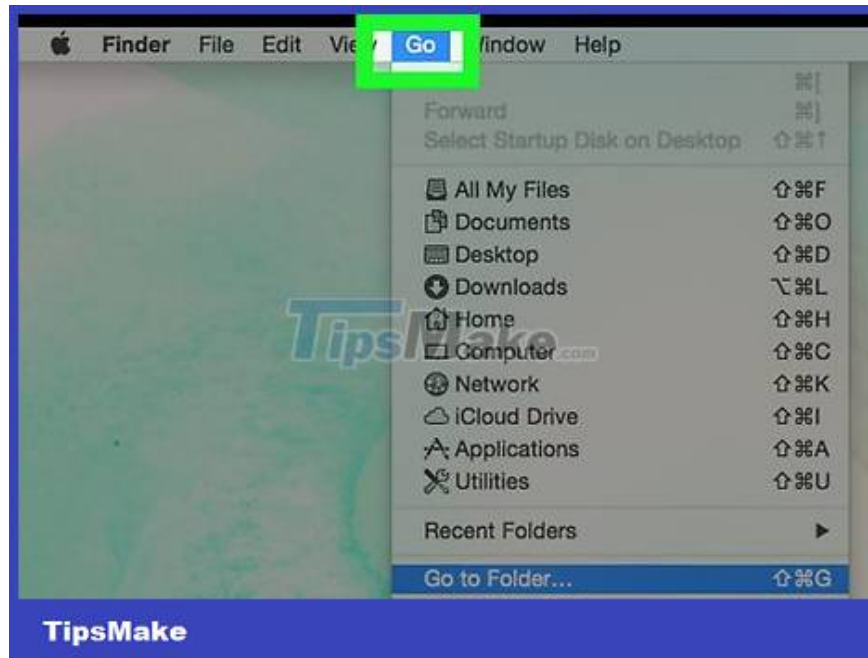
In this example you would see: This Browser > Canada [IP address] > [Country] [IP address] > Uganda [IP address] > Internet

## On Mac



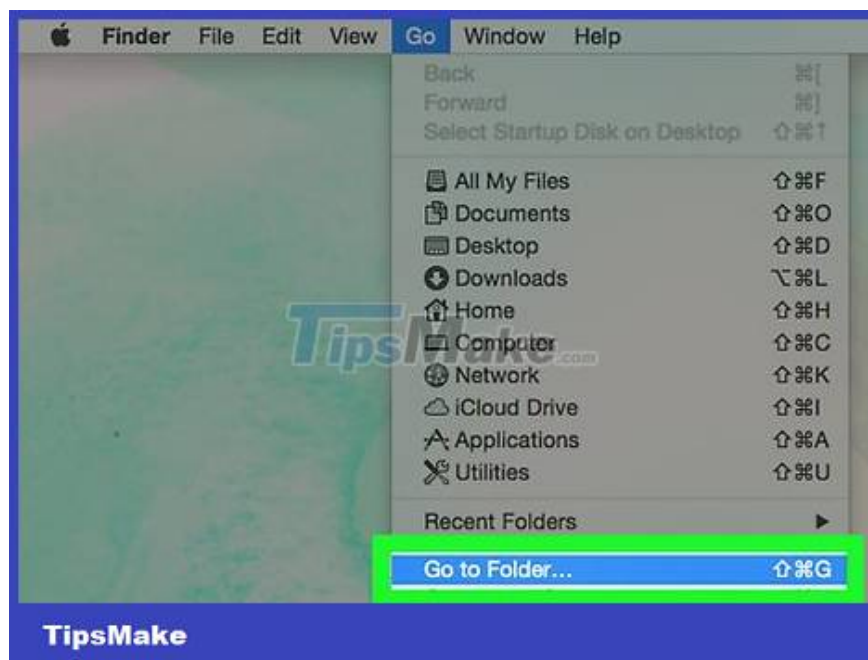
You need to make sure that Tor has been launched at least once. In order for the file "torrc" (which determines the visibility of the exit node on Tor) to appear, the browser needs to be launched on the computer at least once.

You can launch Tor by double-clicking the browser icon and then selecting Connect.

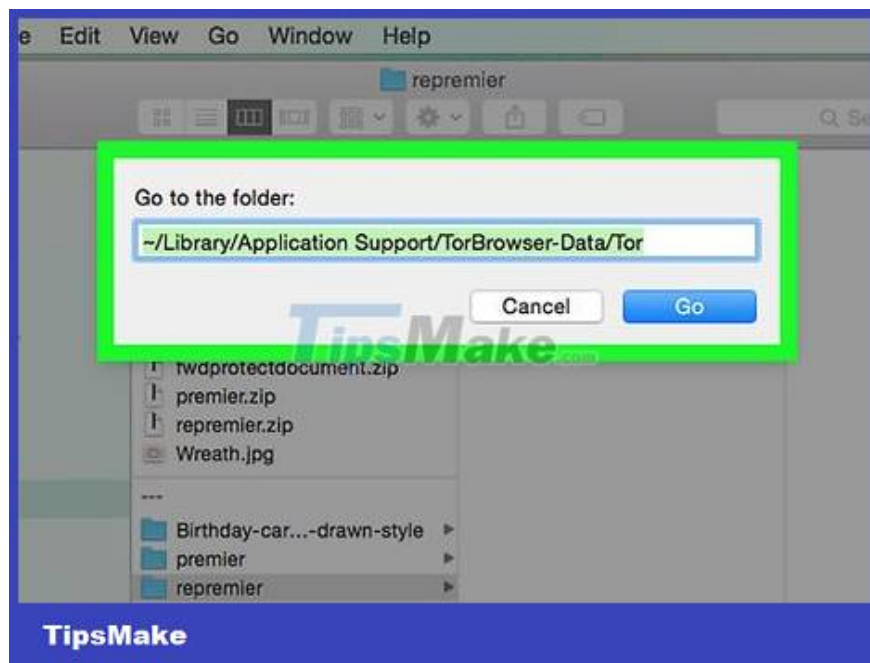


Click Go . This menu item is at the top of the screen. A drop-down menu will appear.

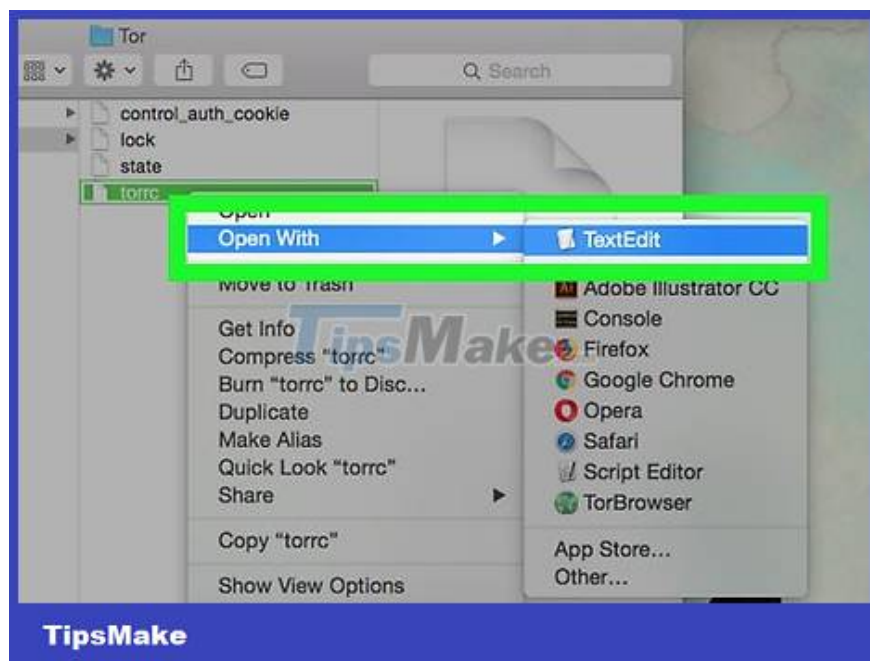
If you can't find this menu item, you'll need to click on the desktop or open Finder first.



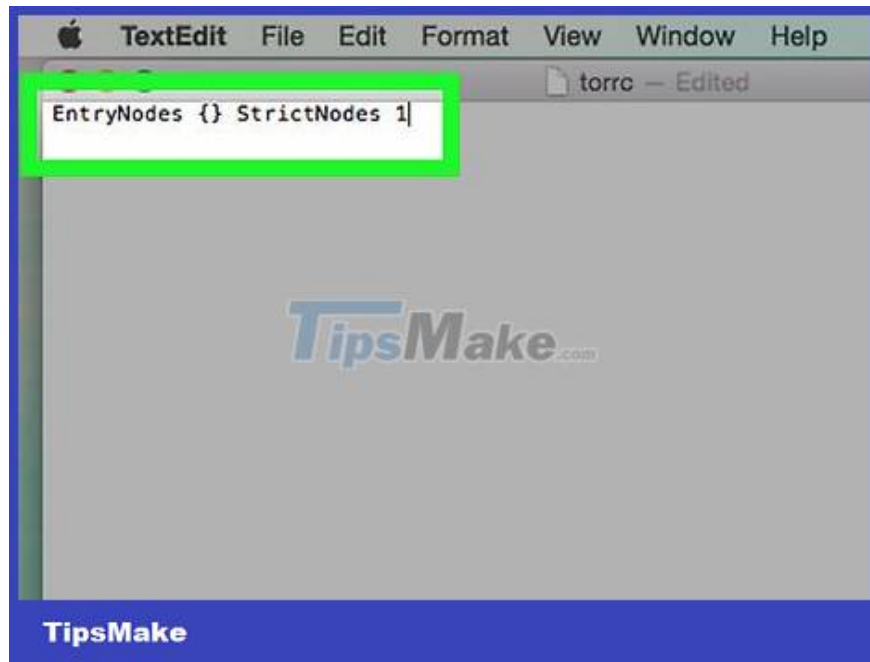
Click Go to Folder . This option is at the bottom of the drop-down menu. A text frame will appear in the center of the screen.



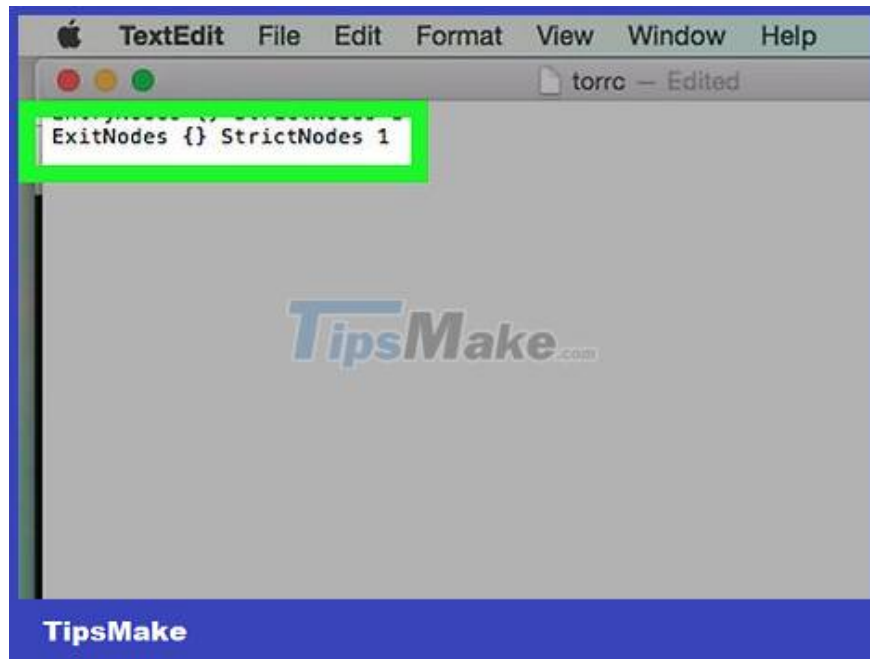
Enter the Tor directory address. Type ~/Library/Application Support/TorBrowser-Data/Tor/ and then press ? Return. The directory containing the file "torrc" will open.



Open the file "torrc" with TextEdit. Double-click the "torrc" file, then select TextEdit when the computer asks you to choose a program. This will allow you to edit the contents of the "torrc" file.



Add the line "EntryNodes". Place your mouse pointer below the last line in the document, then type EntryNodes {} StrictNodes 1 and then press ? Return.

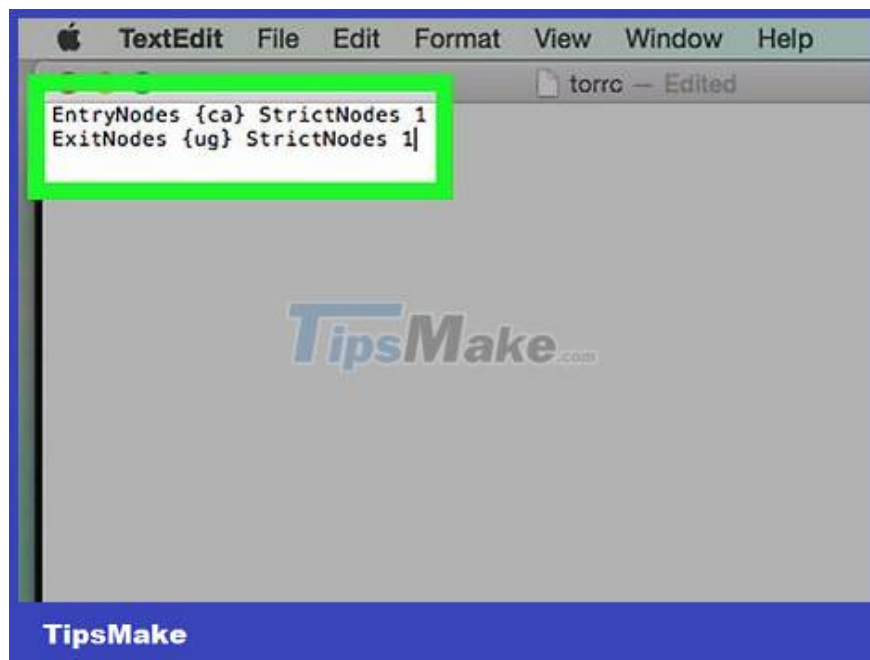


Add the line "ExitNodes". You enter ExitNodes {} StrictNodes 1 and press ? Return.



Find the access and exit country codes. Go to <https://web.archive.org/web/20180328074444/http://www.b3rn3d.com/blog/2014/03/05/tor-country-codes/> using a desktop web browser, scroll down to the "List of country codes for Tor" heading, then find the code for the country you want to use as the access and exit node.

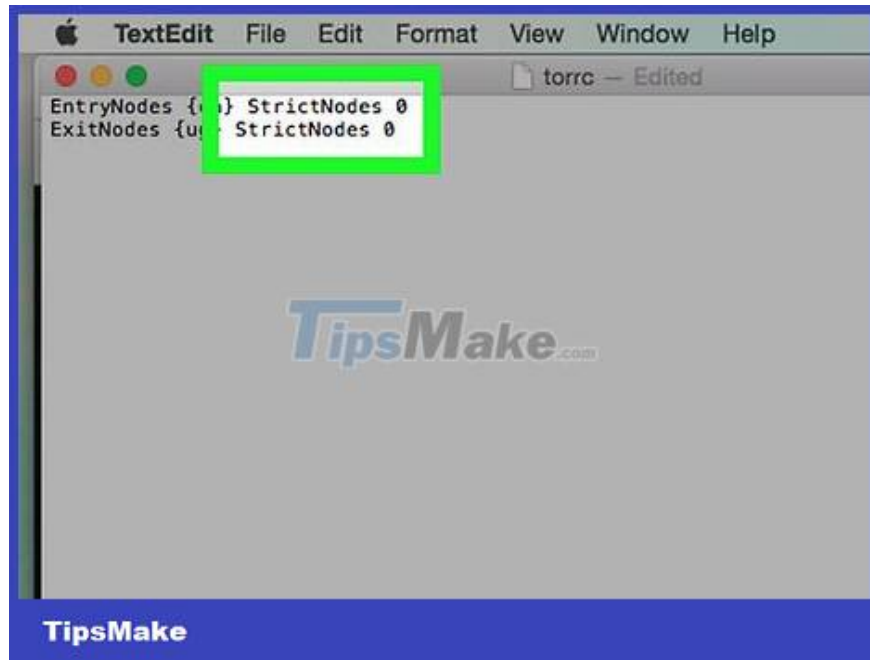
For example, if you want your Tor browsing session to start in Canada and end in the Republic of Uganda, look for the codes for "Canada" (ca) and "Uganda" (ug).



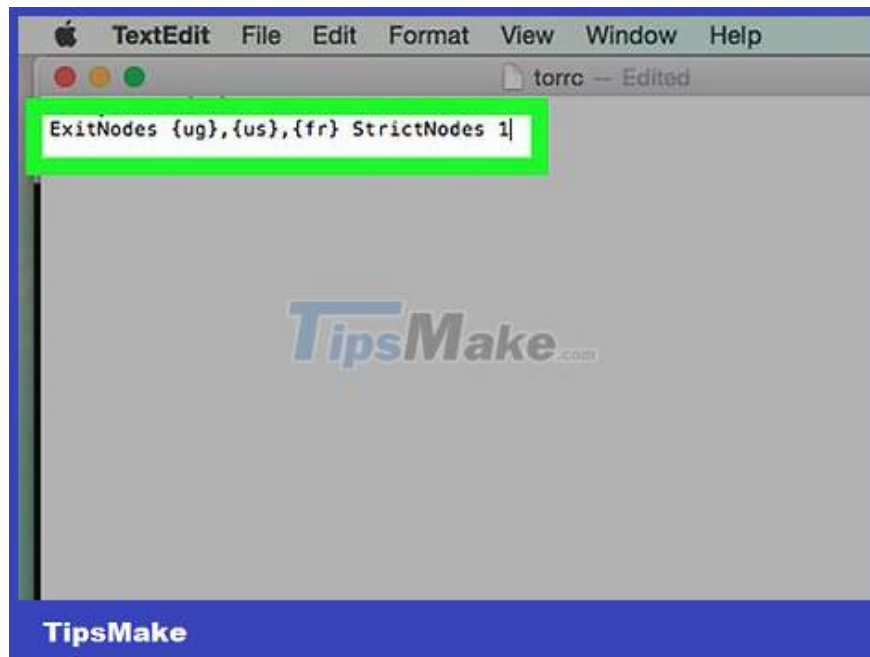
Enter the country code to access and exit. Enter the code for the country you want to use to start your browsing session between the curly braces {} to the right of the "EntryNodes" line, then do the same for the exit country in the "ExitNodes" line. For example, if you want to access in Canada and exit in Uganda, you would enter the following:

EntryNodes {ca} StrictNodes 1

ExitNodes {ug} StrictNodes 1



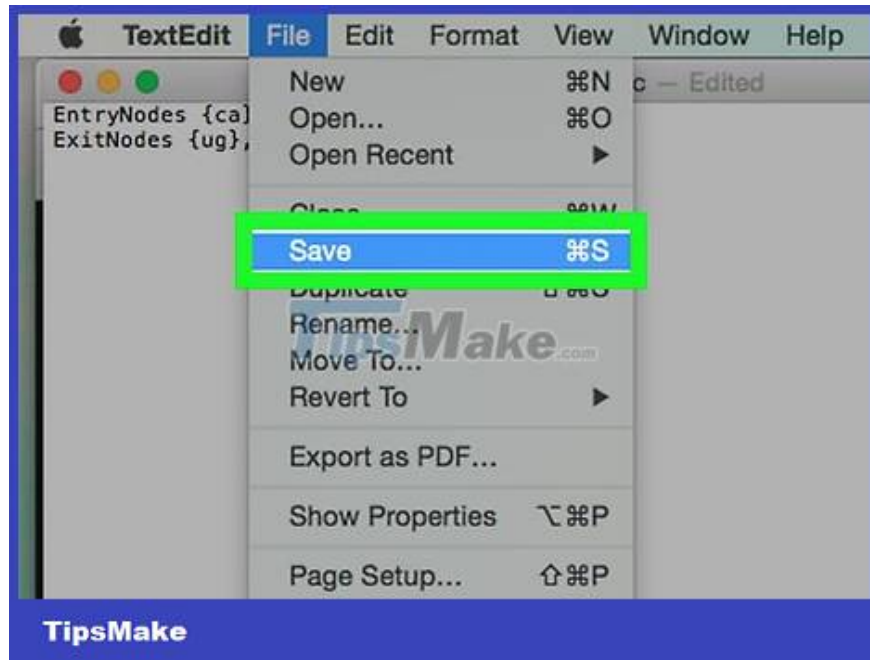
Consider disabling the node strictly. You can proceed to replace StrictNodes 1 with StrictNodes 0 to ensure that Tor will still use a different country code if the specified country does not work.



Add more country options to strict network node. If you want a strict node enabled with an access node and/or an exit node, consider adding multiple countries instead of just one. You can add by typing each country code in a pair of curly braces and delimiting them with commas. For example, to add the United States and France to the Uganda "ExitNodes" line, you would enter:

ExitNodes {ug},{us},{fr} StrictNodes 1

You need to make sure that there is no space between each pair of curly braces and the country inside.



Replace the original "torrc" file with the updated file. Press ? Command+S, then exit TextEdit. The contents of the original "torrc" file will be updated.



Open Tor. Tor may take a few seconds longer to launch at this point, especially if you select a remote country.



Check the access and exit network nodes of the Tor circuit. Visit any website (for example, <https://www.google.com/>) using the Tor browser, then click the onion icon in the top left of the page. A drop-down menu titled "Tor circuit for this site" will appear with the browser, the access node, the intermediate connection, the exit node, and the Internet data, all listed from top to bottom.

In this example you would see: This Browser > Canada [IP address] > [Country] [IP address] > Uganda [IP address] > Internet

You finished reading the article "**How to Set Specific Country on Tor Browser**" edited by the [TipsMake](#) team. We hope this article has provided you with many useful tech tips and tricks. You can search for similar articles on tips and guides. Thank you for reading and for following us regularly.