

# How to set SD card as default storage on Android

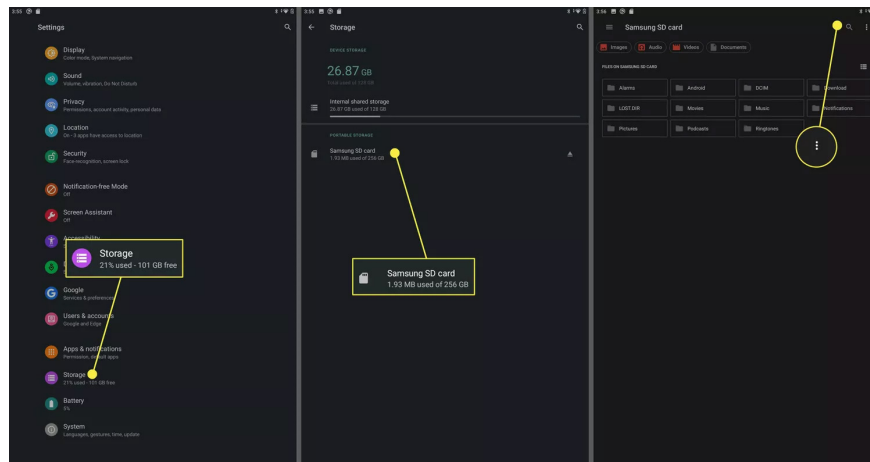
Many people choose microSD cards to expand the storage capacity on their Android phones. Here's how to set an SD card as the default storage on your Android phone.

Most phones have a maximum storage limit. When the default storage capacity on an Android phone is used up, it will affect the storage of personal information. Many people choose microSD cards to expand the storage capacity on their Android phones. Here are instructions for setting an SD card as the default storage on an Android phone.

## How to set SD card as default storage on Android

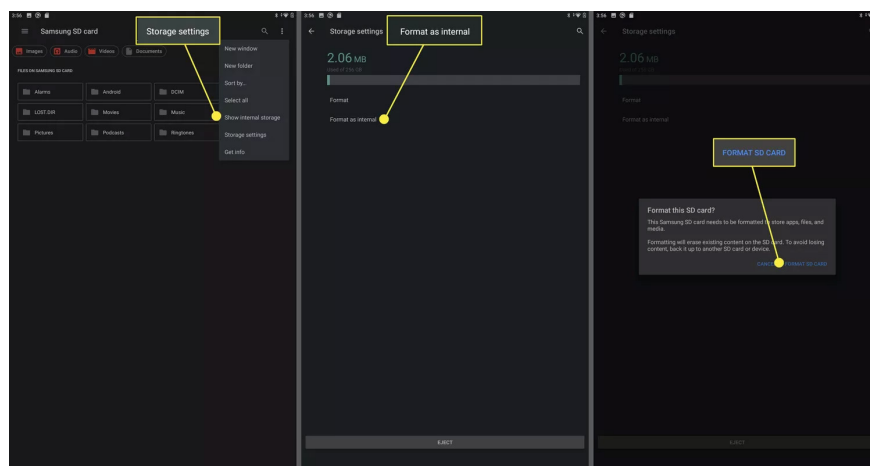
### Step 1:

Insert the SD card into your phone, then tap **Settings > Storage** . Tap the **SD card** that is inserted into your phone, then tap **the 3-dot icon** in the top right corner.



### Step 2:

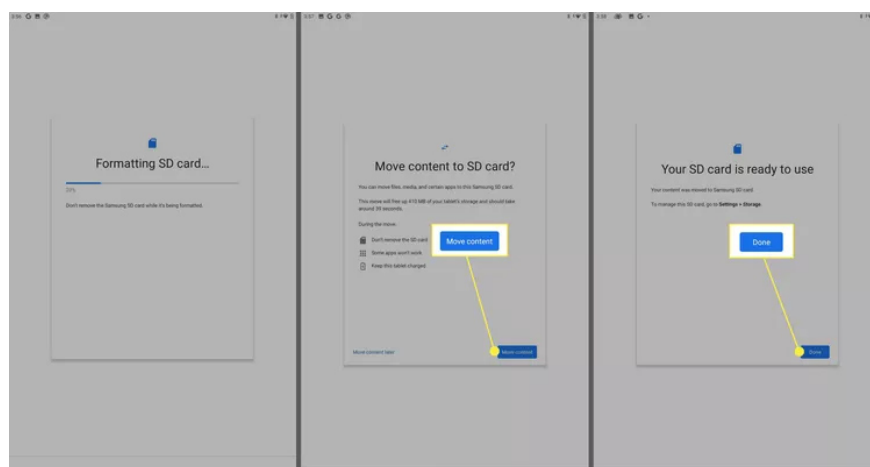
In the displayed menu, **click Storage settings** to adjust the storage on your Android phone. **Next, click Format as internal** and **select Format SD card** to set the SD card as the default memory on your phone.



Formatting an SD card will erase all of its contents. Back up any data you want to keep before completing this step.

### Step 3:

You **continue to select Move content** to transfer data to the SD card connected to the phone. Press Done when this process is complete.



Depending on your phone, there will be some limitations on how you can use your new SD card and what you can store on it. Some devices won't let you store apps or games on the SD card, but you can store additional data there.

You finished reading the article "**How to set SD card as default storage on Android**" edited by the [TipsMake](#) team. We hope this article has provided you with many useful tech tips and tricks. You can search for similar articles on tips and guides. Thank you for reading and for following us regularly.