

How to set priorities for applications in Windows 10

If a process (application) has a higher priority, it will receive more processor resources for better performance than a process with a lower priority.

Windows shares processor resources for all running processes based on their priority. If a process (application) has a higher priority, it will receive more processor resources for better performance than a process with a lower priority.

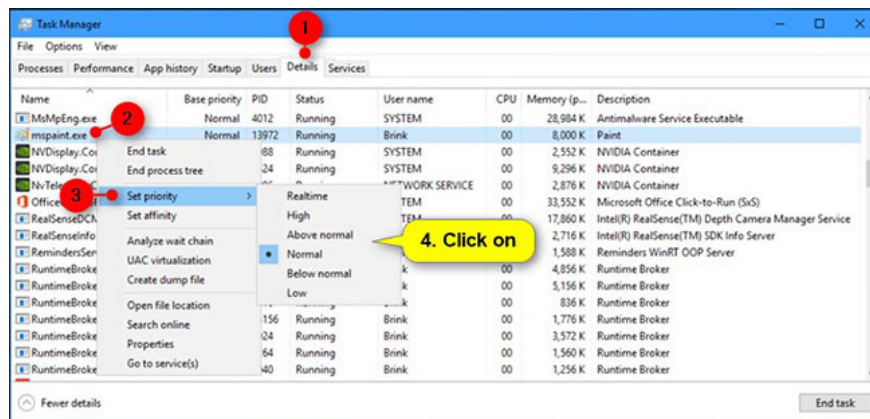
If you prefer, you can set the priority manually for processes to run with **Realtime, High, Above normal, Normal, Below normal** or **Low** priority in Windows, based on your own needs instead. because of the default priority. The changes you make to the priority of a process (application) are temporary and not permanently set. When the application is closed or you restart the computer, Windows will forget the priority you set for it.

This tutorial will show you how to change the priority of an application to processor resources in Windows 10.

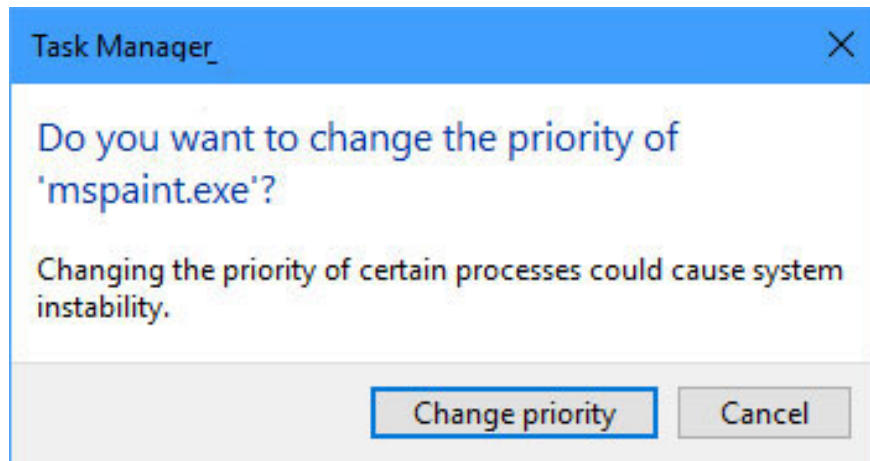
Important note : Do not set up processes with real-time priority (Realtime), because it can reduce the performance of the system, by making all processes lower priority than not. have the resources they need.

Method 1: Change the priority of the running process in Task Manager

1. Open Task Manager in a more detailed view.
2. Click the **Details** tab, right-click or hold and hold the process name (for example, "**mspaint.exe**"), select **Set priority** and set the priority you want to give the process (**Realtime, respectively. High, Above normal, Normal, Below normal** or **Low**).



3. Click **Change priority** to confirm.



4. When done, you can close Task Manager if you like.

Method 2: Change the priority of the process running in PowerShell

1. Open PowerShell.

2. Enter the command below into PowerShell and press Enter .

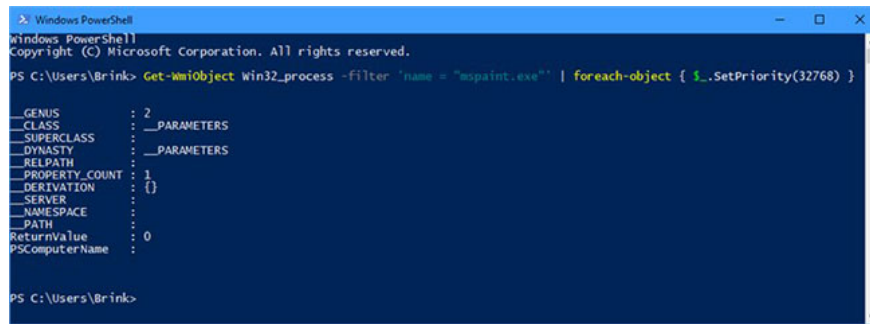
```
Get-WmiObject Win32_process -filter 'name = "ProcessName"' | foreach-object { $_
```

Note : Replace **ProcessName** in the above command with the actual name of the running process (for example, "**mspaint.exe**") that you want to change the priority of. Replace the **PriorityLevelID** in the above command with the number (for example, "**32768**") in the table below for the priority (for example, "**Above normal**") you want to set for this process. For example:

```
Get-WmiObject Win32_process -filter 'name = "mspaint.exe"' | foreach-object { $_
```

Priority ID	Priority ID	256	Realtime	128	High	32768	Above normal	32	Normal	16384	Below normal	64	Low
--------------------	--------------------	-----	----------	-----	------	-------	--------------	----	--------	-------	--------------	----	-----

3. When done, you can close PowerShell if you like.



```
Windows PowerShell
Copyright (C) Microsoft Corporation. All rights reserved.

PS C:\Users\Brink> Get-WmiObject win32_process -filter 'name = "mspaint.exe"' | foreach-object { $_.SetPriority(32768) }

__GENUS          : 2
__CLASS          : __PARAMETERS
__SUPERCLASS    : __PARAMETERS
__DYNASTY       : __PARAMETERS
__RELPATH       :
__PROPERTY_COUNT : 1
__DERIVATION    : {}
__SERVER        :
__NAMESPACE     :
__PATH          :
ReturnValue     : 0
PSComputerName  :
```

Method 3: Change the priority of the running process in the Command Prompt

1. Open Command Prompt.
2. Type the command below you want to use into the Command Prompt and press Enter .

```
wmic process where name="ProcessName" CALL setpriority "PriorityLevelName"
```

Or:

```
wmic process where name="ProcessName" CALL setpriority PriorityLevelID
```

Note : Replace **ProcessName** in the above command with the actual name of the running process (for example, "**mspaint.exe**") that you want to change the priority of.

Replace **PriorityLevelName** in the above command with the priority name (for example, "**Above normal**") in the table below that you want to set for this process.

Replace the **PriorityLevelID** in the above command with the number (for example, "**32768**") in the table below for the priority (for example, "**Above normal**") you want to set for this process.

For example:

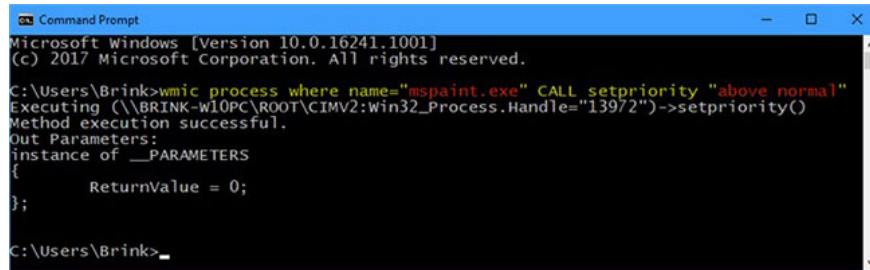
```
wmic process where name="mspaint.exe" CALL setpriority "Above normal"
```

Or:

```
wmic process where name="mspaint.exe" CALL setpriority 32768
```

Priority ID **Priority ID** 256 Realtime 128 High 32768 Above normal 32 Normal 16384 Below normal 64 Low

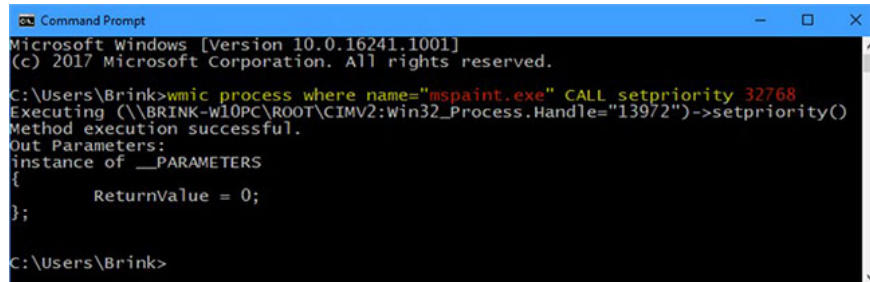
3. When done, you can close the Command Prompt.



```
Microsoft Windows [Version 10.0.16241.1001]
(c) 2017 Microsoft Corporation. All rights reserved.

C:\Users\Brink>wmic process where name="mspaint.exe" CALL setpriority "above normal"
Executing (\\BRINK-W10PC\ROOT\CIMV2:win32_Process.Handle="13972")->setpriority()
Method execution successful.
Out Parameters:
Instance of __PARAMETERS
{
    ReturnValue = 0;
};

C:\Users\Brink>
```



```
Microsoft Windows [Version 10.0.16241.1001]
(c) 2017 Microsoft Corporation. All rights reserved.

C:\Users\Brink>wmic process where name="mspaint.exe" CALL setpriority 32768
Executing (\\BRINK-W10PC\ROOT\CIMV2:win32_Process.Handle="13972")->setpriority()
Method execution successful.
Out Parameters:
Instance of __PARAMETERS
{
    ReturnValue = 0;
};

C:\Users\Brink>
```

Start the application with the priority set in the Command Prompt

1. Open **Command Prompt** .
2. Enter the command below into the Command Prompt and press Enter .

```
start "" /PriorityLevelName "??ng d?n ??y ?? c?a file ?ng d?ng"
```

If you like, you can use the command below to create a shortcut that will always open the application with the priority set.

```
cmd /c start "" /PriorityLevelName "??ng d?n ??y ?? c?a file ?ng d?ng"
```

Note : Replace the **PriorityLevelName** in the above command with the priority name (for example, **"AboveNormal"**) in the table below that you want to set for this process.

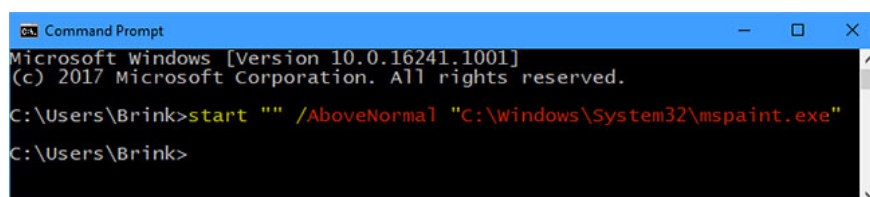
Replace the **'Full path of the application file'** in the above command with the actual full path of the application file (for example, **"C: WindowsSystem32mspaint.exe"**) you want to start.

For example:

```
start "" /AboveNormal "C:WindowsSystem32mspaint.exe"
```

Name of priority Realtime High AboveNormal Normal BelowNormal Low

3. Once done, you can close the Command Prompt if you like.



```
Microsoft Windows [Version 10.0.16241.1001]
(c) 2017 Microsoft Corporation. All rights reserved.

C:\Users\Brink>start "" /AboveNormal "C:\Windows\System32\mspaint.exe"

C:\Users\Brink>
```

All operations are completed!

Hope you are succesful.

You finished reading the article "**How to set priorities for applications in Windows 10**" edited by the [TipsMake](#) team. We hope this article has provided you with many useful tech tips and tricks. You can search for similar articles on tips and guides. Thank you for reading and for following us regularly.
