

How to set Google as the default search engine on Chrome, Coc Coc, Edge, Firefox

How to set Google as the default search engine on Chrome, Coc Coc, Edge, Firefox. Currently there are some software that takes advantage of user alertness that changes the default Google search engine on the browser.

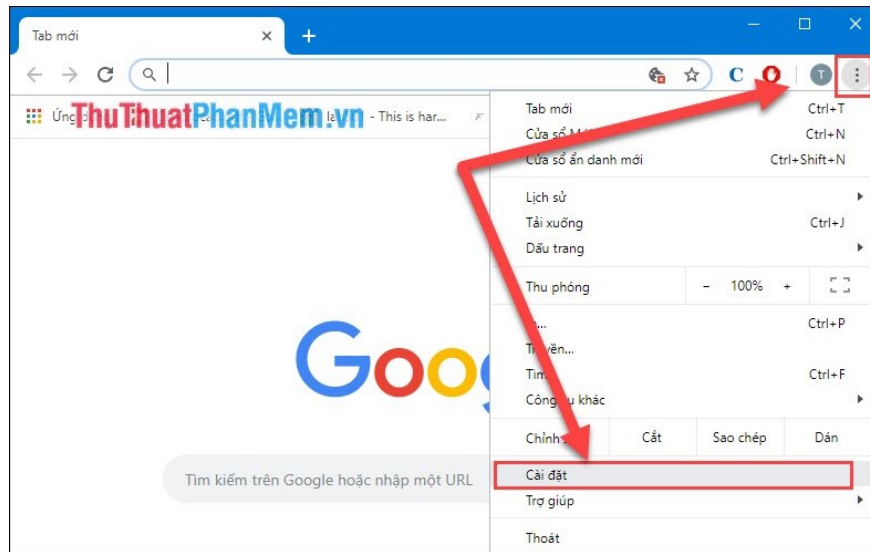
The Google Search is one of the most powerful search engines in the world today. The amount of data (data) on Google's server system meets all requirements of the user. Thanks to that helped Google become popular and outperform other data-poor tools. But now there are some software that takes advantage of the user's alertness to change the default Google search engine on the browser. Today, Software Tips will guide you How to make Google the default search engine on Chrome, Coc Coc, Edge, Firefox.



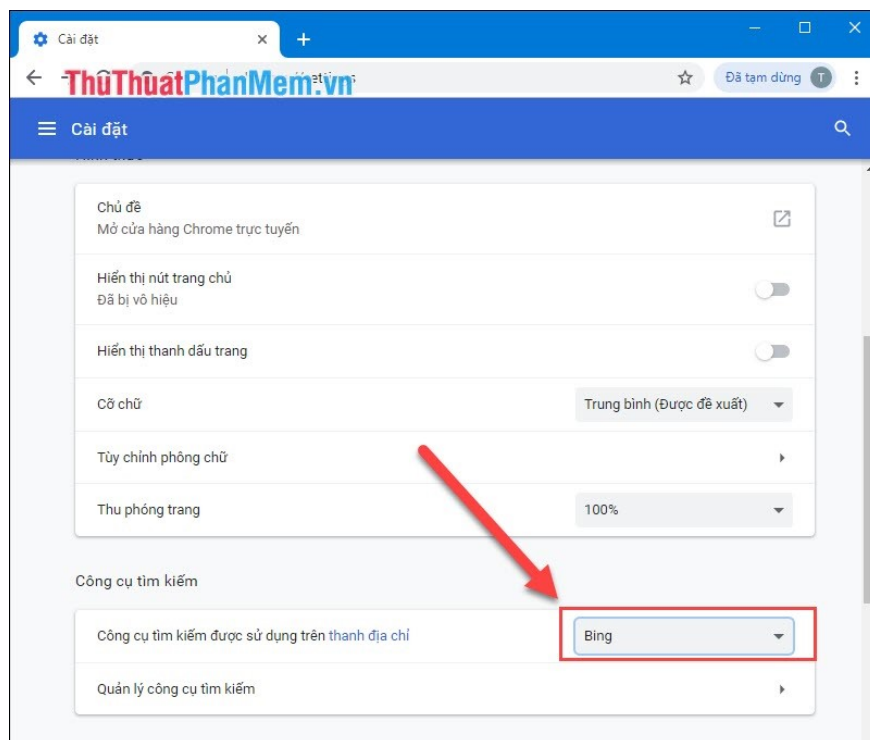
1. Chrome browser

For your home browser, the default is Google Chrome, but for some reason Google no longer searches automatically, you proceed to do the following:

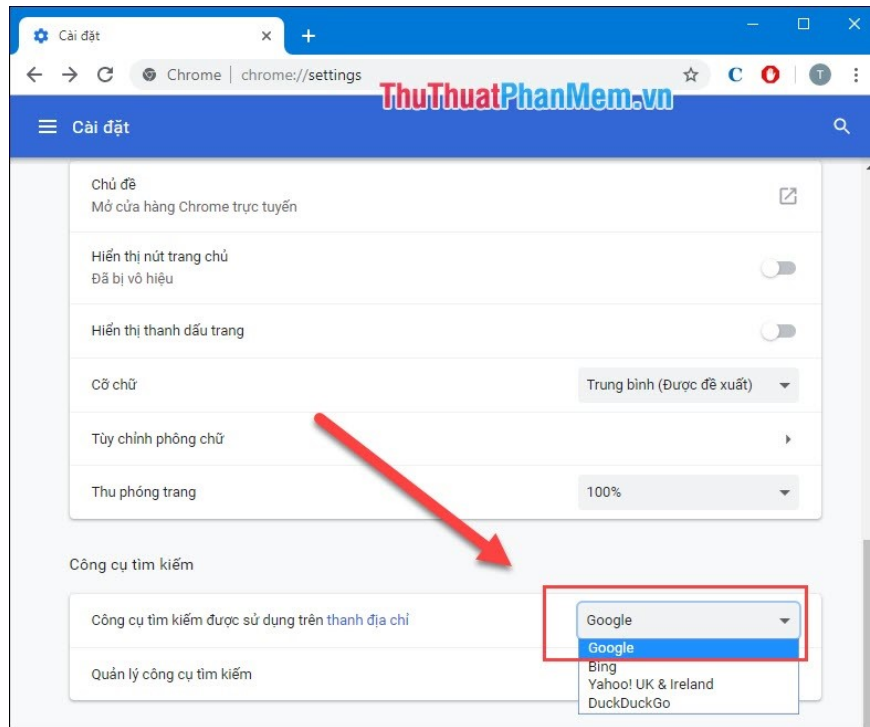
Step 1: Click on the "3 dots" in the right corner of the screen and select **Settings** .



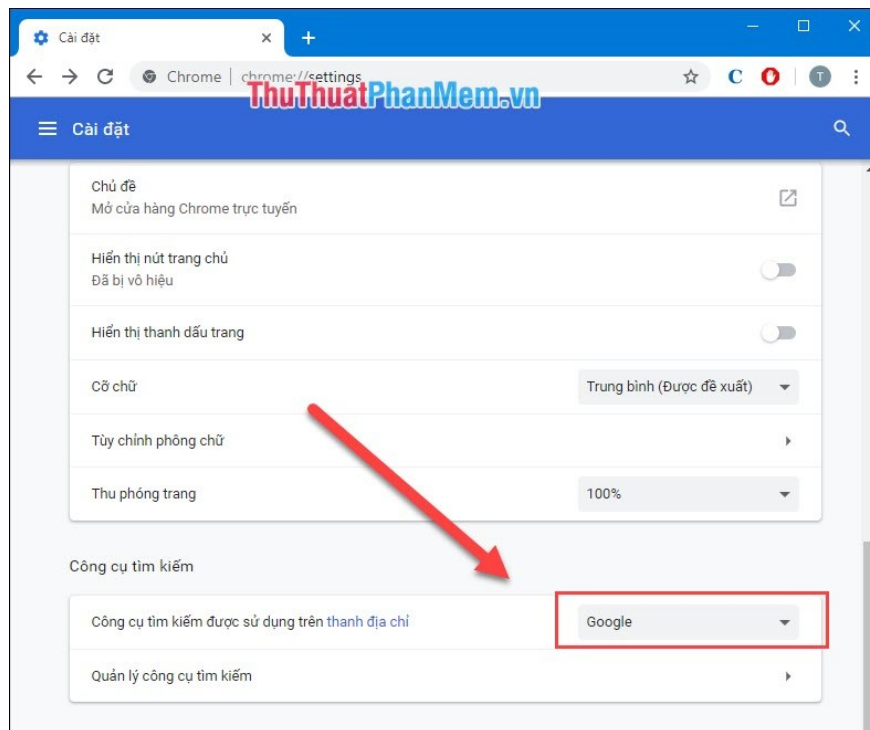
Step 2: When the installation window appears, scroll down to the bottom and find the **Search Engine** section .



Step 3: Click on **the search engine** used in the address bar and select **Google** .



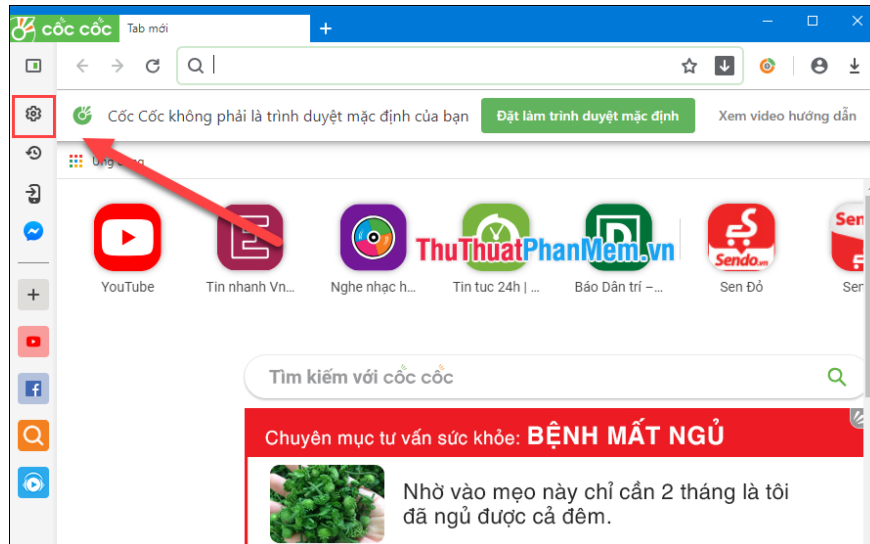
Step 4: After that, restart your browser and you're done.



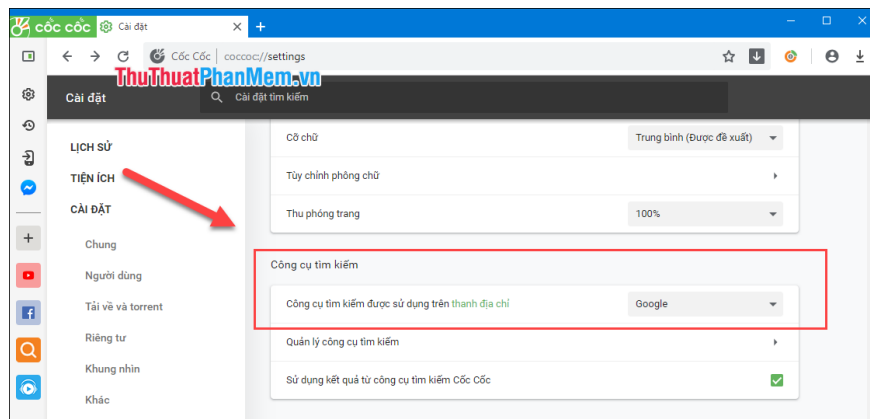
2. C?c C?c browser

Coc Coc browser uses the same Chromium core as Google Chrome so the method is not much different.

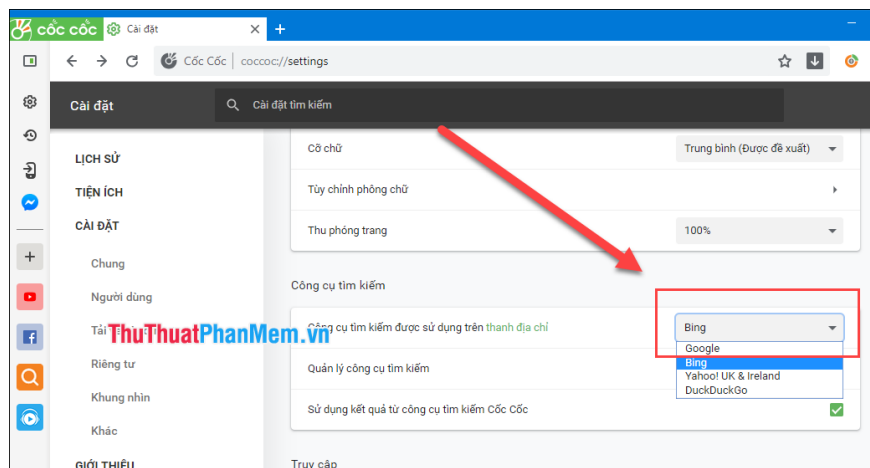
Step 1: You proceed to access **Settings** of Coc Coc.



Step 2: Scroll down to find the " *Search engines* " section.



Step 3: Then click on **the Search Engine** used in the address bar and change to **Google** .

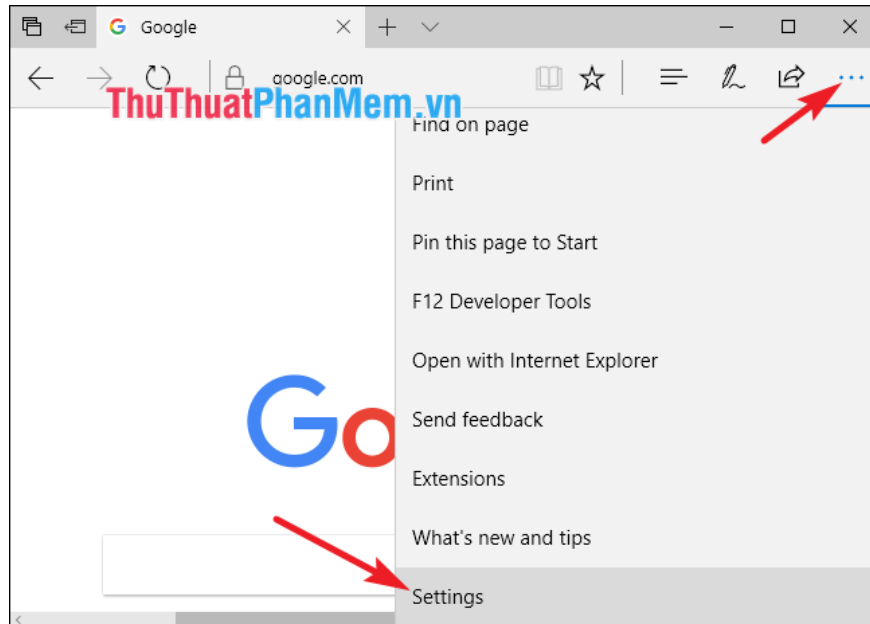


After the change is complete, restart your browser for the changes to apply.

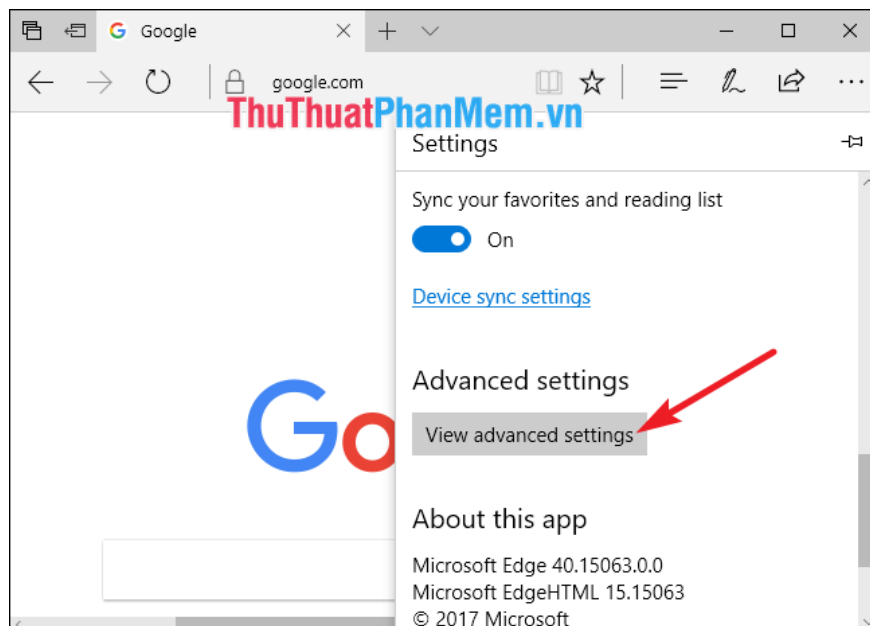
3. Edge browser

Browser **Edge** is a browser that comes on the Windows version. With the advantages of light and easy to use, but Edge does not have Vietnamese support, so this is also a major inadequacy for users.

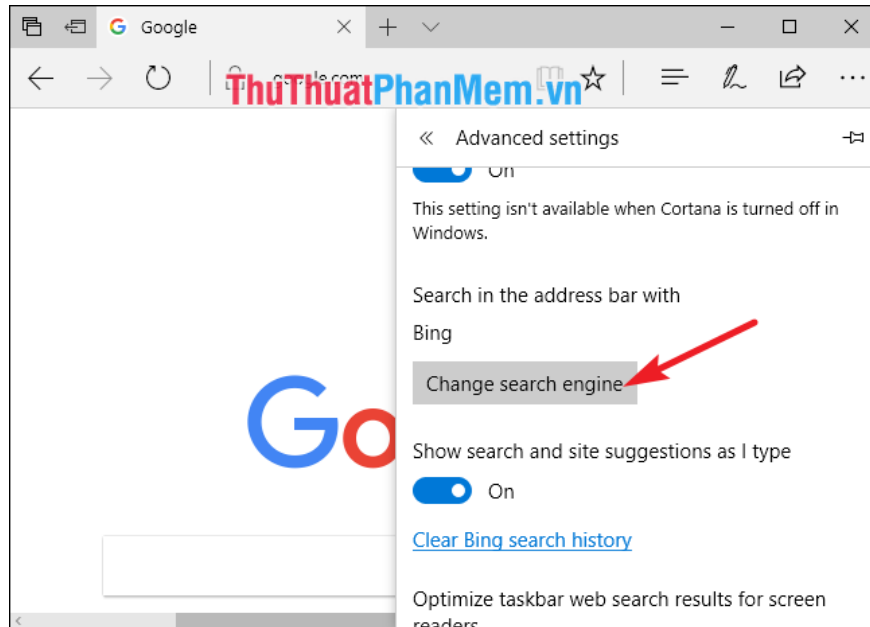
Step 1: Click on the three dots and select **Settings** .



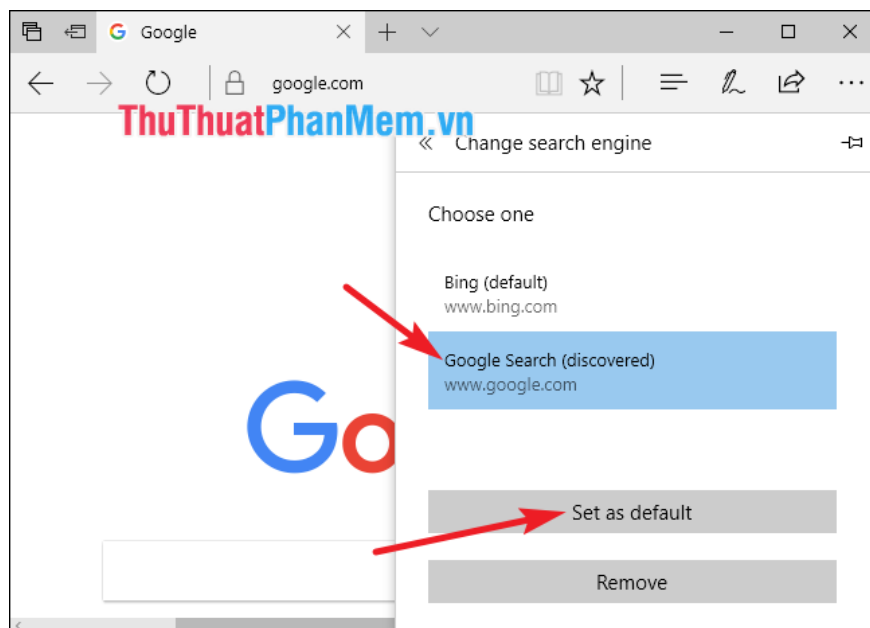
Step 2: After entering the **Setting** , you scroll down and find **Advanced Settings** and select **View Advanced Settings** .



Step 3: In **Advanced Settings** , scroll down to find **Search in the address bar with** and select **Change search engine** .



Step 4: Here, you proceed to **Google Search** and click **Set as default** .

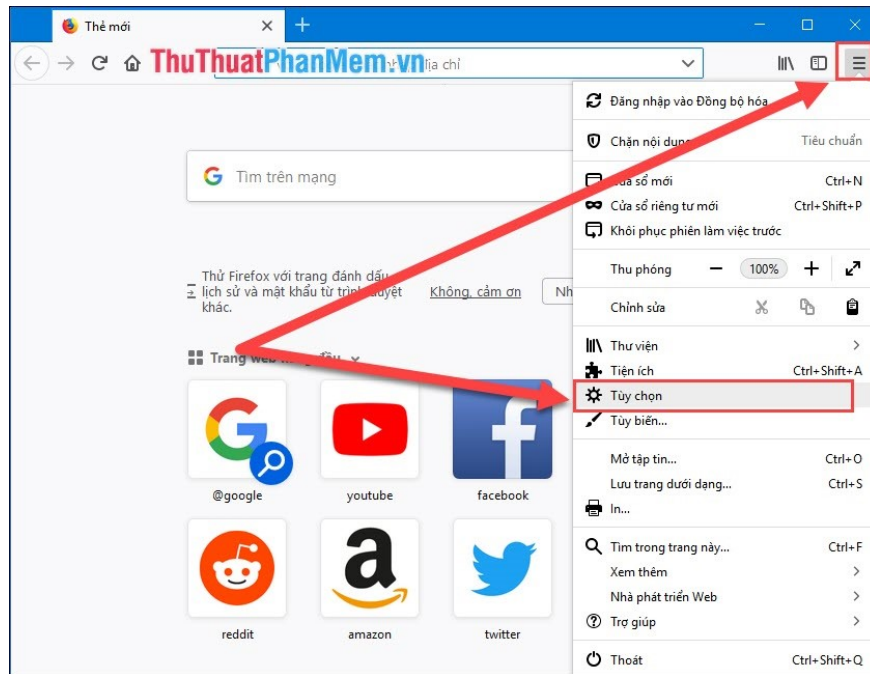


Then, restart your browser as the above settings apply.

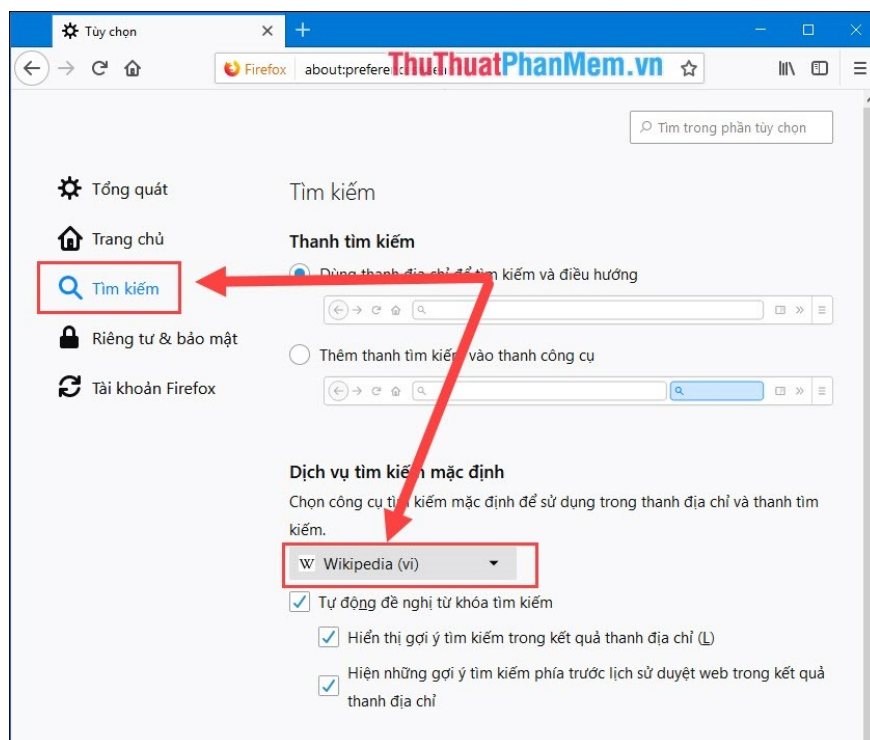
4. Firefox browser

If you use FireFox browser then you proceed to do the following:

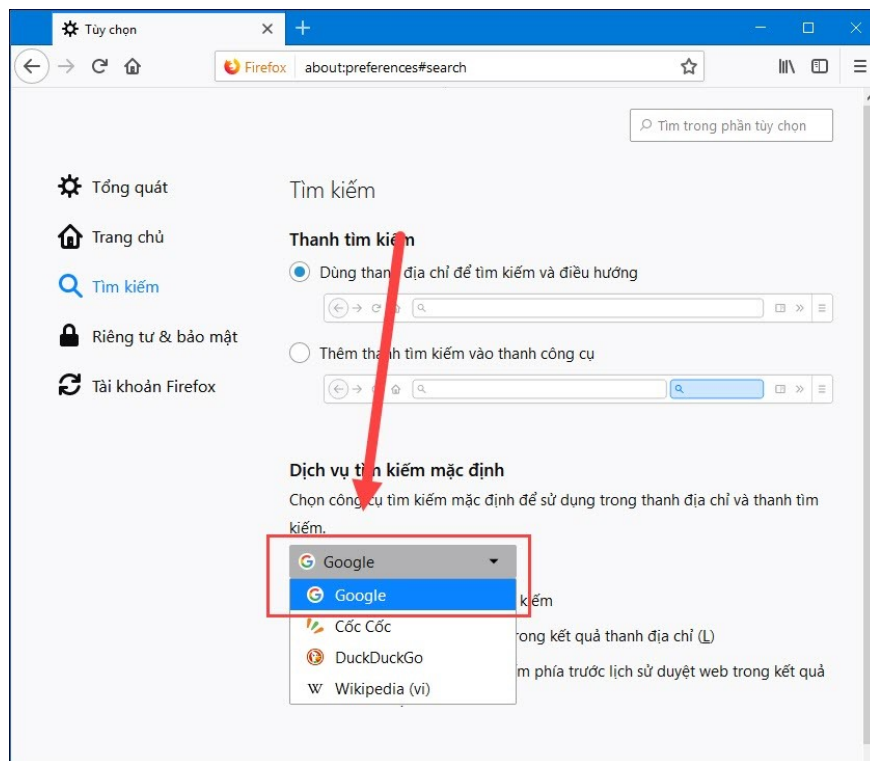
Step 1: Click on the "3 dashes" icon and select **Options** .



Step 2: Next, you select the **Search** section and in the **default Search Services** section you proceed to change to **Google** .



Step 3: After changing to Google, close the browser and restart it to apply the settings.



Thus, Software Tips have instructed you How to set Google as the default search engine on Chrome, Coc Coc, Edge, Firefox. With these ways you can change Google to search quickly, if you do not find Google search at settings, please reset your browser and try again. Good luck!

You finished reading the article "**How to set Google as the default search engine on Chrome, Coc Coc, Edge, Firefox**" edited by the [TipsMake](#) team. We hope this article has provided you with many useful tech tips and tricks. You can search for similar articles on tips and guides. Thank you for reading and for following us regularly.