

How to set a Windows 11 computer password

To protect as well as prevent unauthorized access to personal information and data on the computer from strangers, users need to set a password, if you are wondering how to set a password on your Windows 11 computer. Let's do it together with Taimienphi.

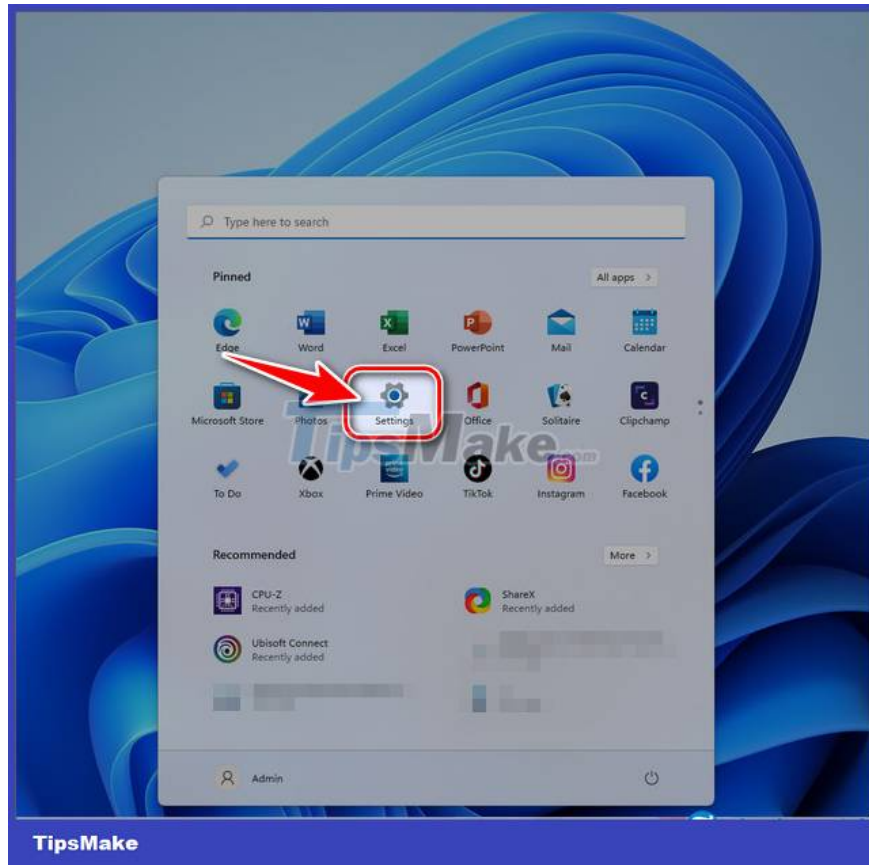
The Windows 11 version has been modified and optimized by Microsoft with many features and interfaces, so it is completely different from Windows 10/8/7, which also means that setting a **computer password on Windows 11** also will be different, but the steps are extremely simple.



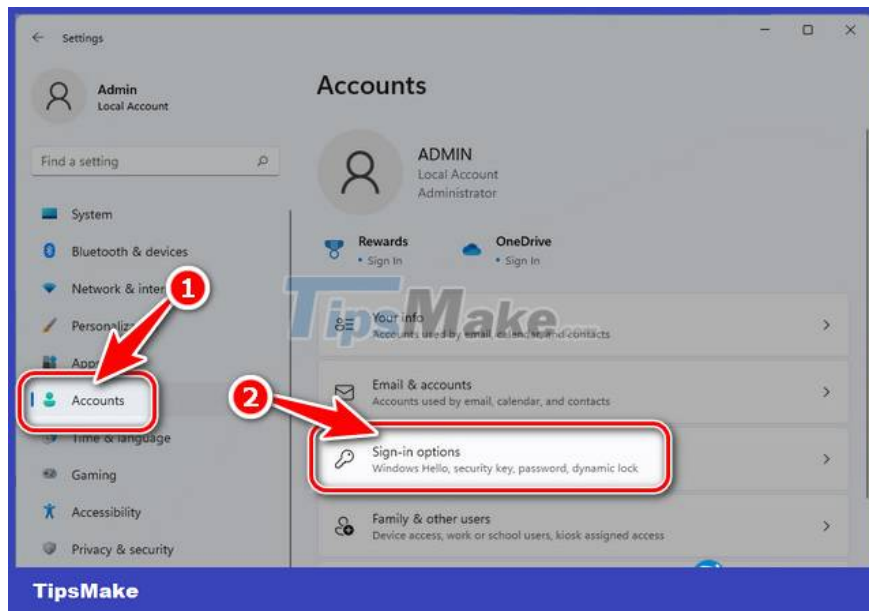
How to set a password on Windows 11 to protect your computer

Instructions for setting password on Windows 11 computers

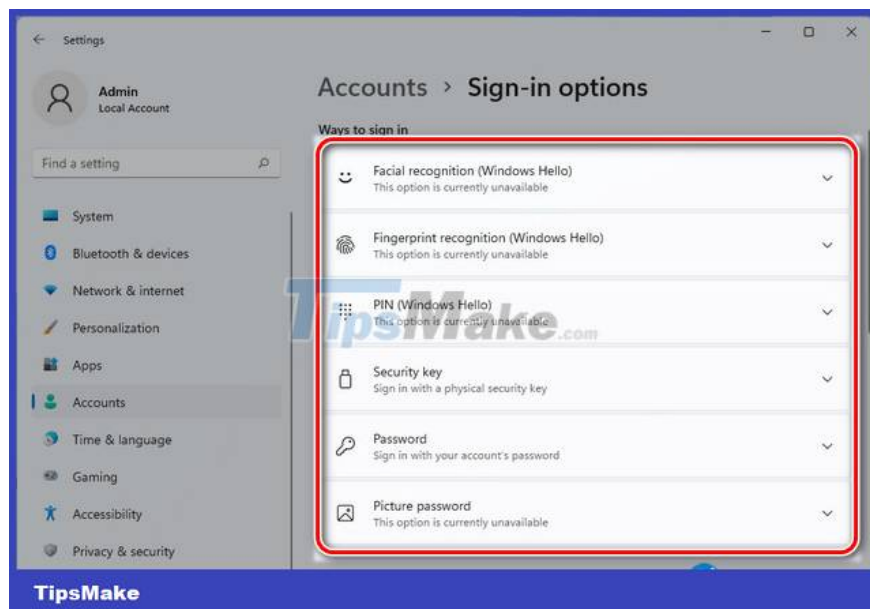
Step 1: Press **the Windows + i** key combination or click **Icon Setting** at **the Start Menu**



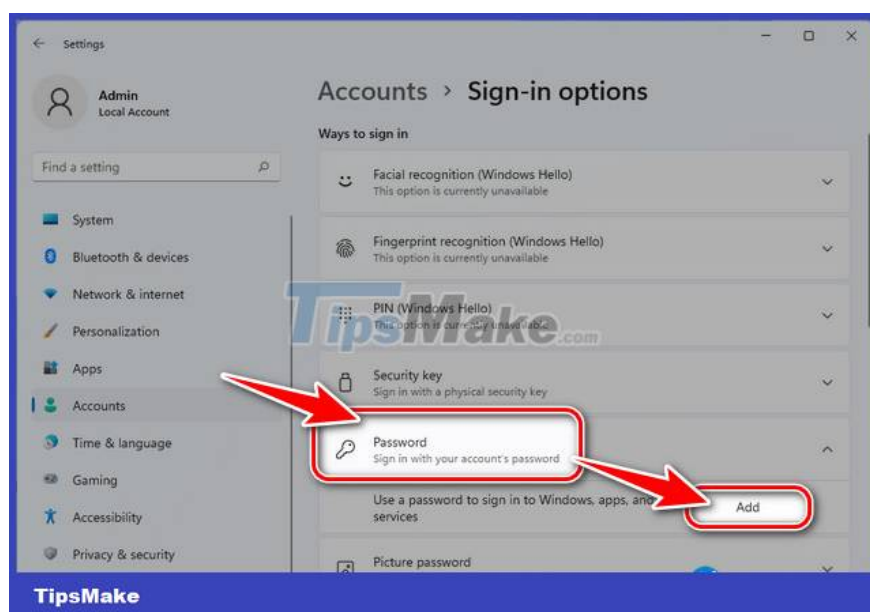
Step 2: In the **Setting** panel , select **Account** => click **Sign-in Options** on the right.



Step 3: Here you can set Windows 11 password by many methods such as **face recognition** , **fingerprint** , **pin code** , **security code** , **password** , **picture password** .



- For example, Taimienphi chooses to set the Windows 11 computer password with Password, select **Password** => click **Add** in the new table that appears.



Step 4: Enter the Windows 11 computer **password** you need to put in the **New Password** box => **re-enter the password in Confirm Password** => enter **the password hint** at **Password Hint** => click **Next** => **Finish** to complete.

- **New Password** and **Confirm Password** must be the same

- **Password Hint** : is a password hint, the system will automatically suggest in case you don't remember what the password you have set is (eg the main password is 24/02// 2021, then you can set Password Hint to be immediatelyinhcuacn to suggest the password you have set).



<https://thuthuat.taimienphi.vn/cach-cai-mat-khau-may-tinh-windows-11-65308n.aspx>

In case if you want to **change your Windows 11 computer password** , just click Change, enter old password and then click Next and follow the same steps as Taimienphi instructed above, if you want to delete the password, leave it all blank.

You finished reading the article "**How to set a Windows 11 computer password**" edited by the [TipsMake](#) team. We hope this article has provided you with many useful tech tips and tricks. You can search for similar articles on tips and guides. Thank you for reading and for following us regularly.