

# How to set a password in Windows 10: Easy and detailed instructions.

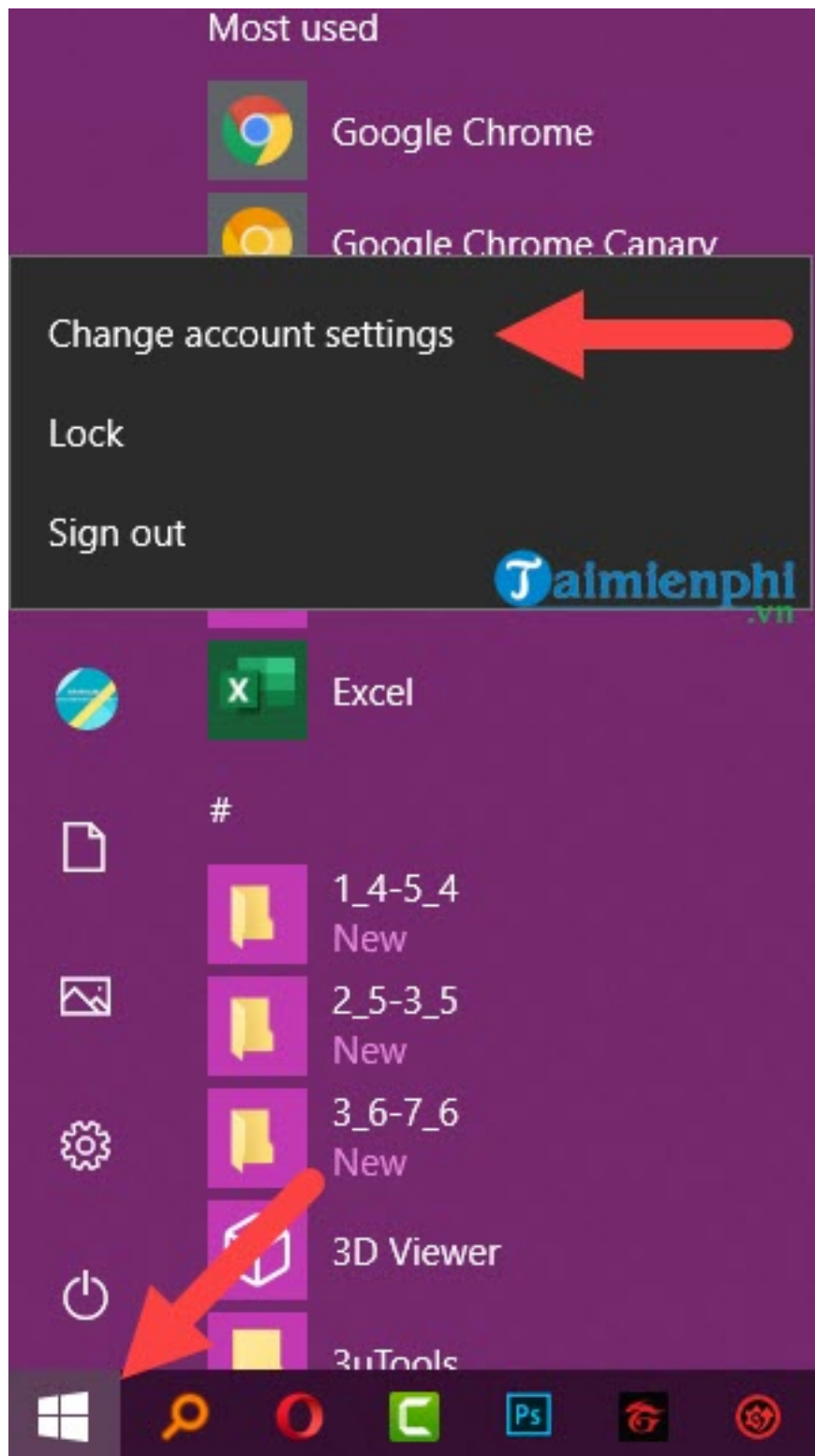
Setting a password for your Windows 10 computer helps protect your data and privacy. This guide from Tai Mien Phi helps you set it up quickly and securely, avoiding the loss of important information.

## *Instructions on setting a password in Windows 10*

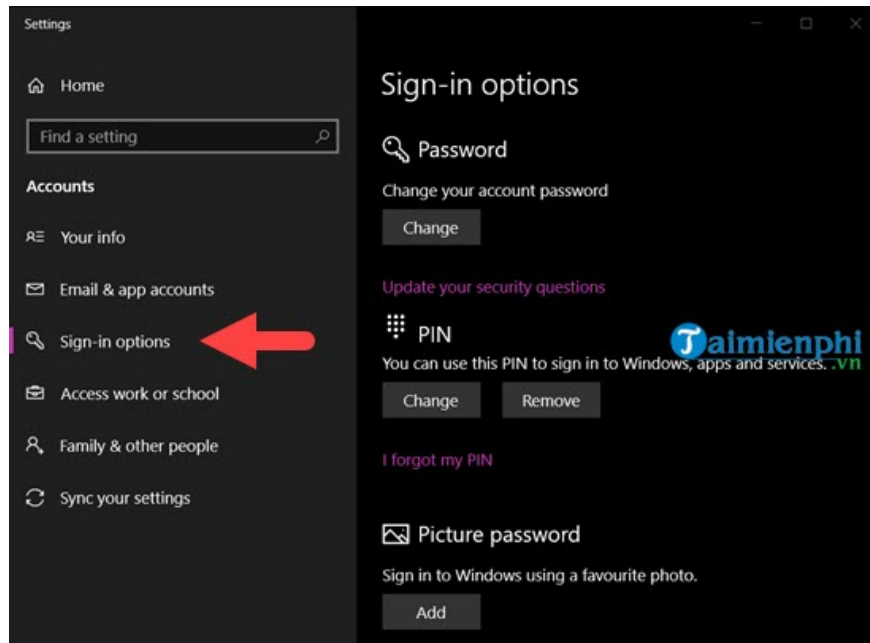
First, let's consider the case where your Windows 10 account is Local, not yet connected to Microsoft.

### *1. The most common method*

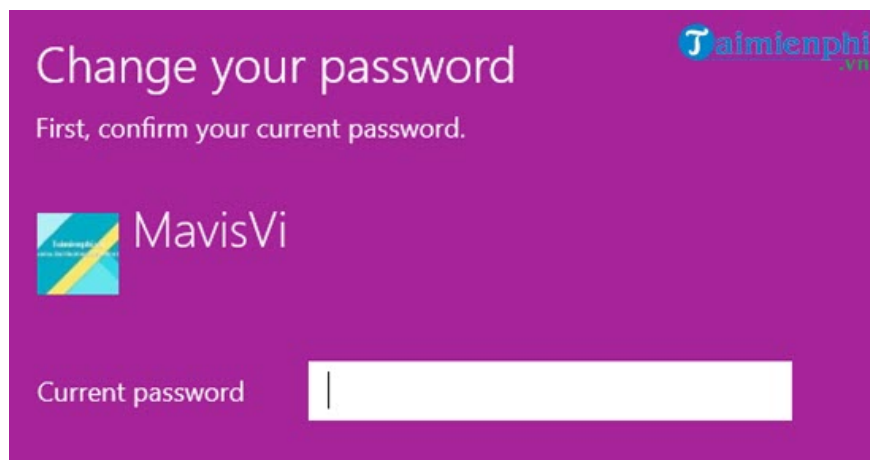
*Step 1:* With this method, simply open **the Start Menu** , click on your account icon, and select **Change Account settings** .



Step 2: In the **Settings** interface , go to **Sign-in Options** . There are three methods here.



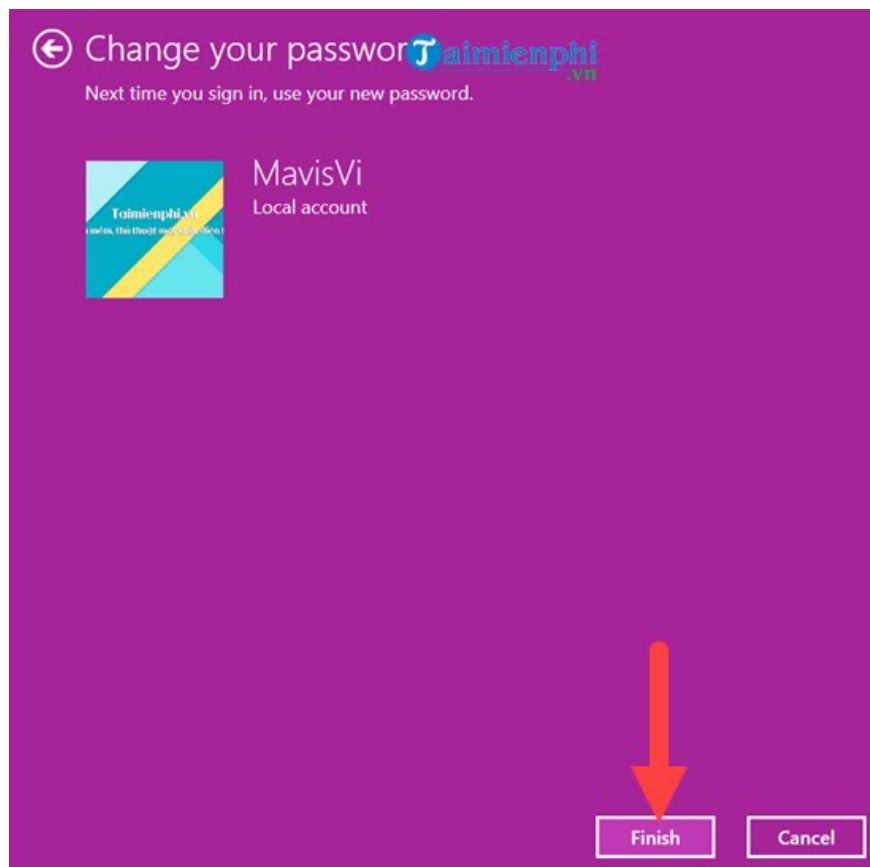
*Step 3:* First, enter your regular password; this determines whether the other methods will be enabled.



*Step 4:* Then, enter your new password twice consecutively. You can also enter a **password hint** as a message to help you remember your password.



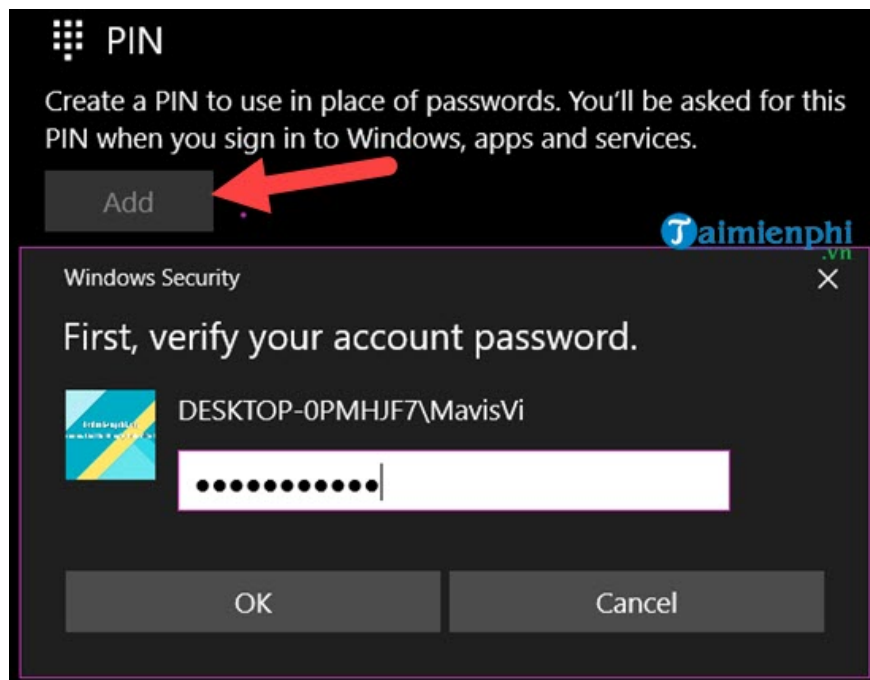
*Step 5:* Once all steps are complete, simply click **Finish** to complete this first method.



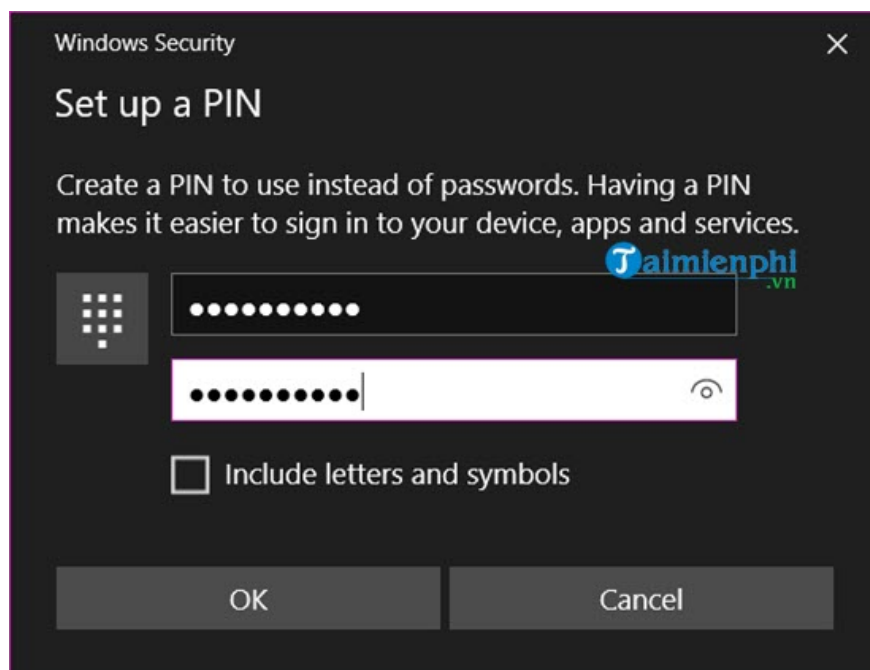
## ***2. Use a PIN code***

Setting up a PIN is quick and easy; just enter it correctly to log into Windows 10.

*Step 1:* Still in **Settings** as shown above, click on **PIN** > select add and enter your current password.



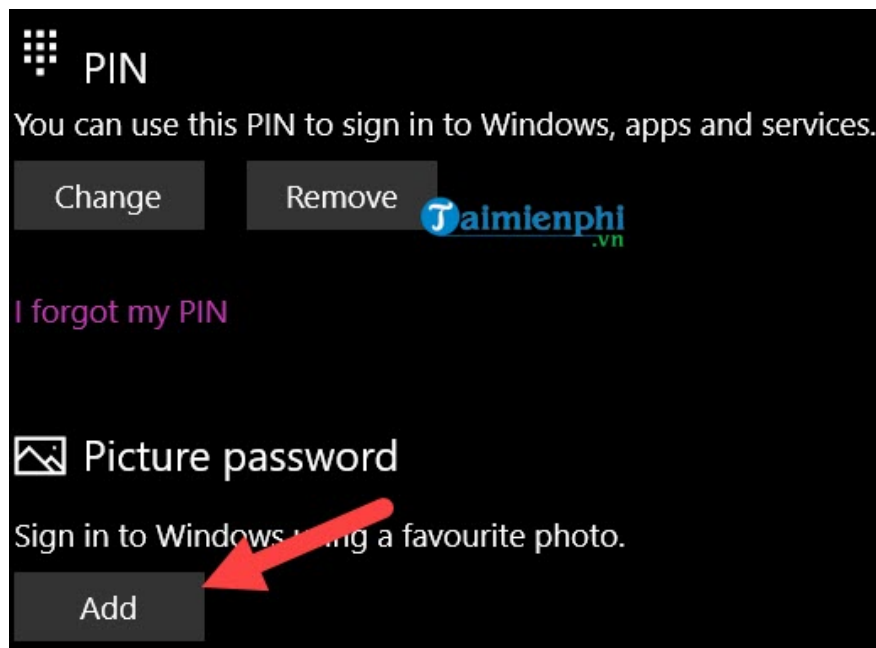
*Step 2:* Then proceed to **set up a PIN** with all numbers. You can also choose **Include letters and symbols** to add letters and special characters if you want to further enhance security.



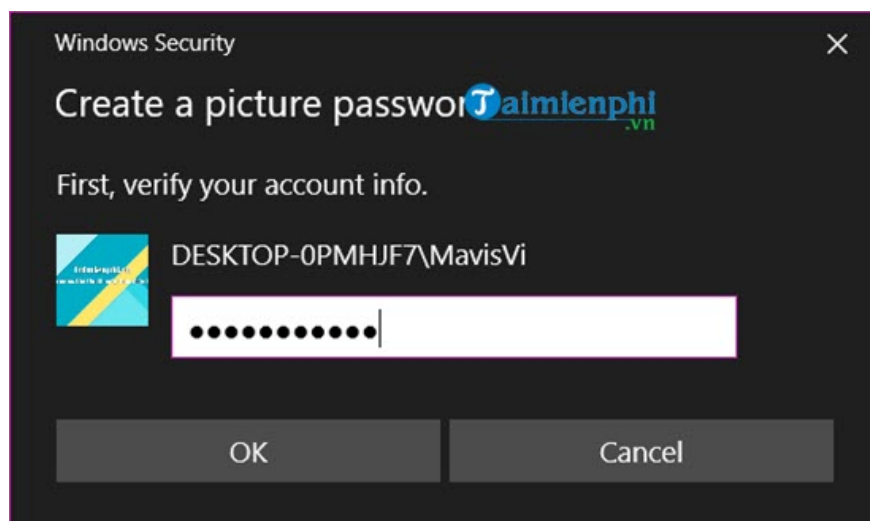
### **3. Use photos**

This feature has been around for a while, but setting a Windows 10 computer password using an image isn't really useful because it's inconvenient and the security method is easily copied.

*Step 1:* In the same section, click **Add** under **Picture Password**.



*Step 2:* Of course, you'll need to enter your computer password first. Here you'll see the **Picture Password**



interface . *Step 3:* On the interface, click **Select picture** to change the default image for this feature. *Step 4:* Choose your favorite picture from your computer to set as your password screen. *Step 5:* Click Use this picture to confirm using that picture. *Step 6:* Here, the mode will let you move your mouse three times as desired. Remember these actions because they are your unlock actions. After each action, a faint arrow will appear to show how you moved your mouse; note that the position is not fixed. *Step 7:* When the "**Congratulations**" message appears, it means the process was successful.

When password

### Welcome to picture password

Picture password is a new way to help you protect your touch-screen PC. You choose the picture — and the gestures you use with it — to create a password that's uniquely yours.

Once you've chosen a picture, "draw" directly on the touchscreen to create a combination of dots, straight lines and taps. The size, position and direction of your gestures become part of your picture password.

Select picture

Cancel



Jaimienphi.vn


10:01 AM

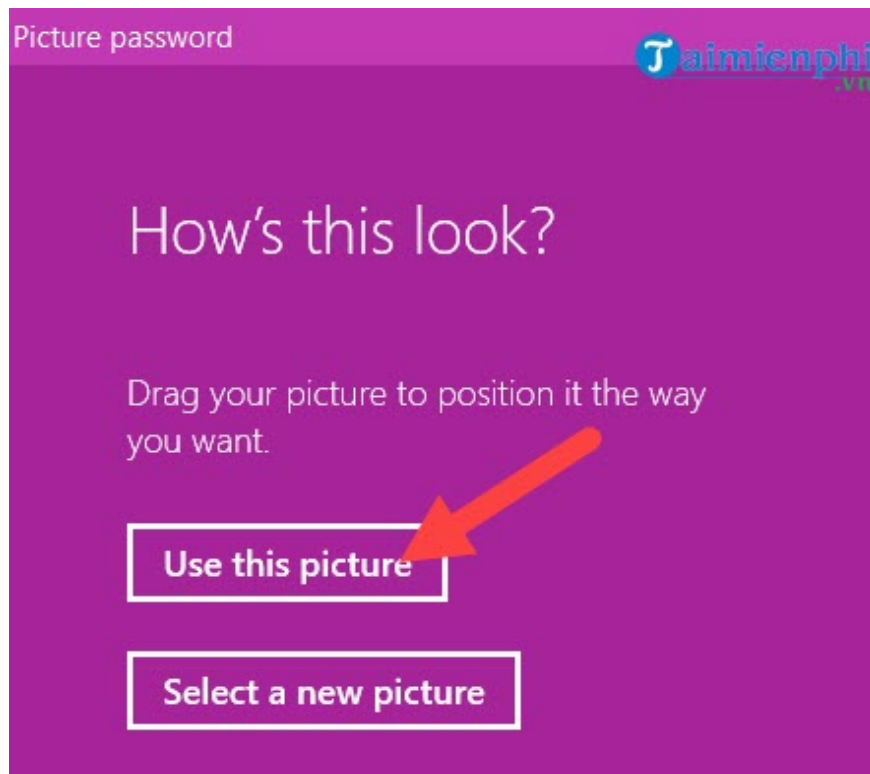
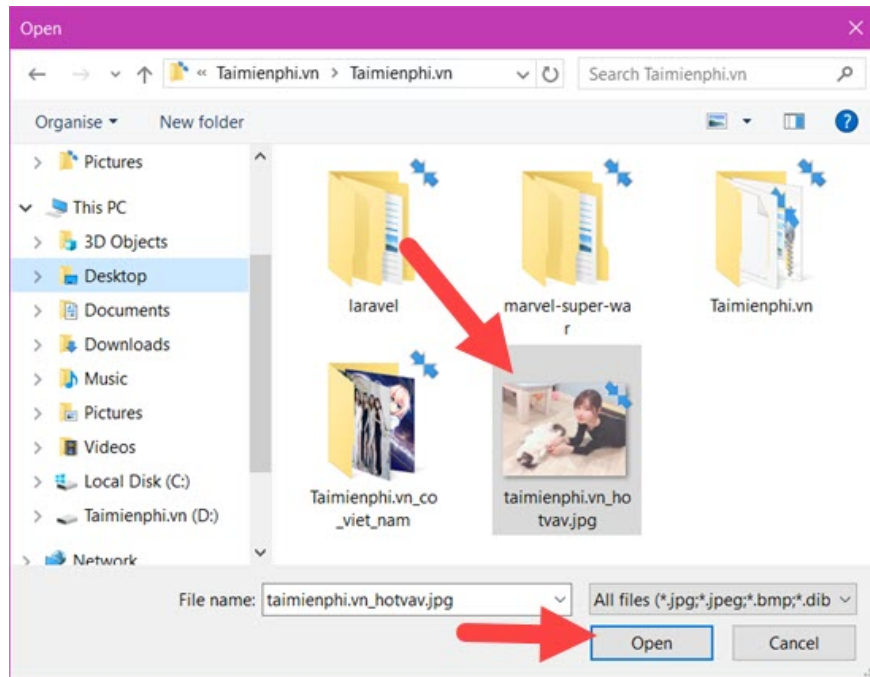
# Welcome to picture password

Picture password is a new way to help you protect your touchscreen PC. You choose the picture – and the gestures you use with it – to create a password that's uniquely yours.

Once you've chosen a picture, "draw" directly on the touchscreen to create a combination of circles, straight lines and taps. The size, position and direction of your gestures become part of your picture password.

Select picture



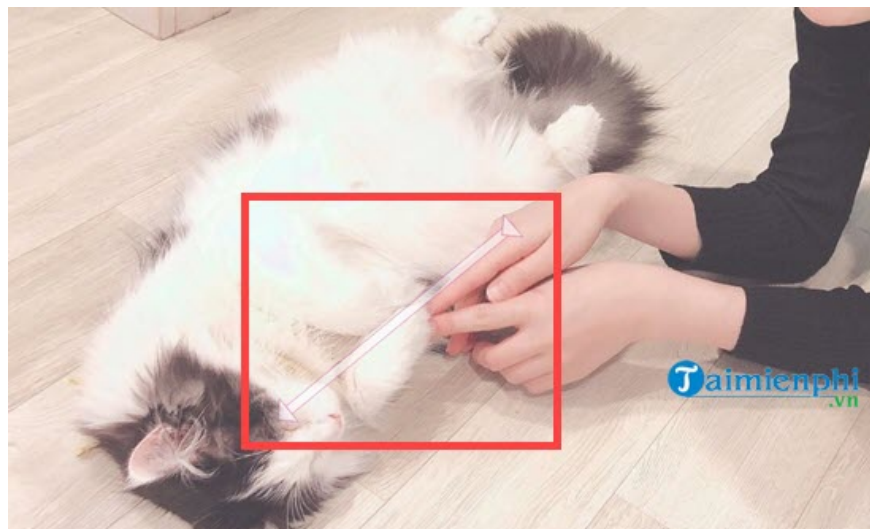


# Set up your gestures

Draw three gestures on your picture. You can use any combination of circles, straight lines and tap 

Remember: the size, position and direction of your gestures – and the order in which you make them – become part of your picture password.

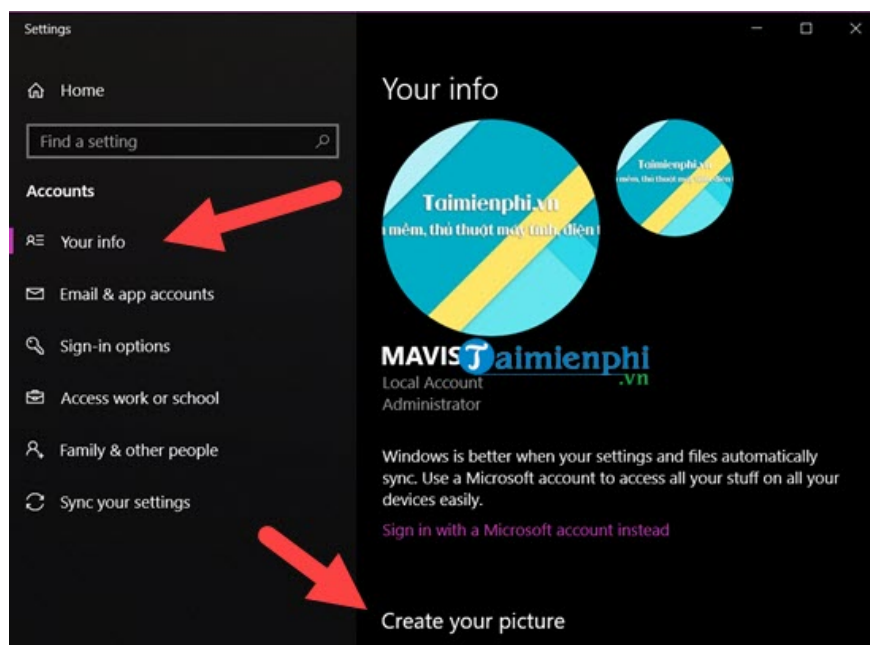
1 2 3





## Set a Windows 10 password with a Microsoft account.

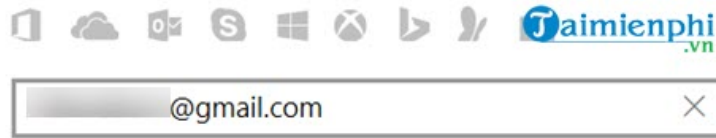
*Step 1:* Still in the settings, select Your info and click Sign in with a Microsoft account instead.




*Step 2:* **Log in** by entering your Microsoft account.

## Make it yours

Your Microsoft account opens up a world of benefits. [Learn more](#)



**Enter your password** to complete the login process.

Enter password 

Enter the password for  @gmail.com

[Forgotten my password](#)

*Step 3:* Finally, enter your password to complete the process.

## Sign in to this computer using your Microsoft account

From now on, you'll unlock this device using either the password for your Microsoft account or, if you've set one up, your PIN. That way, you can get help from Cortana and find your device if you lose it, and your settings will sync automatically.

To make sure it's really you, we'll need your current Windows password one last time. Next time you sign in to Windows, you'll use your Microsoft account password.

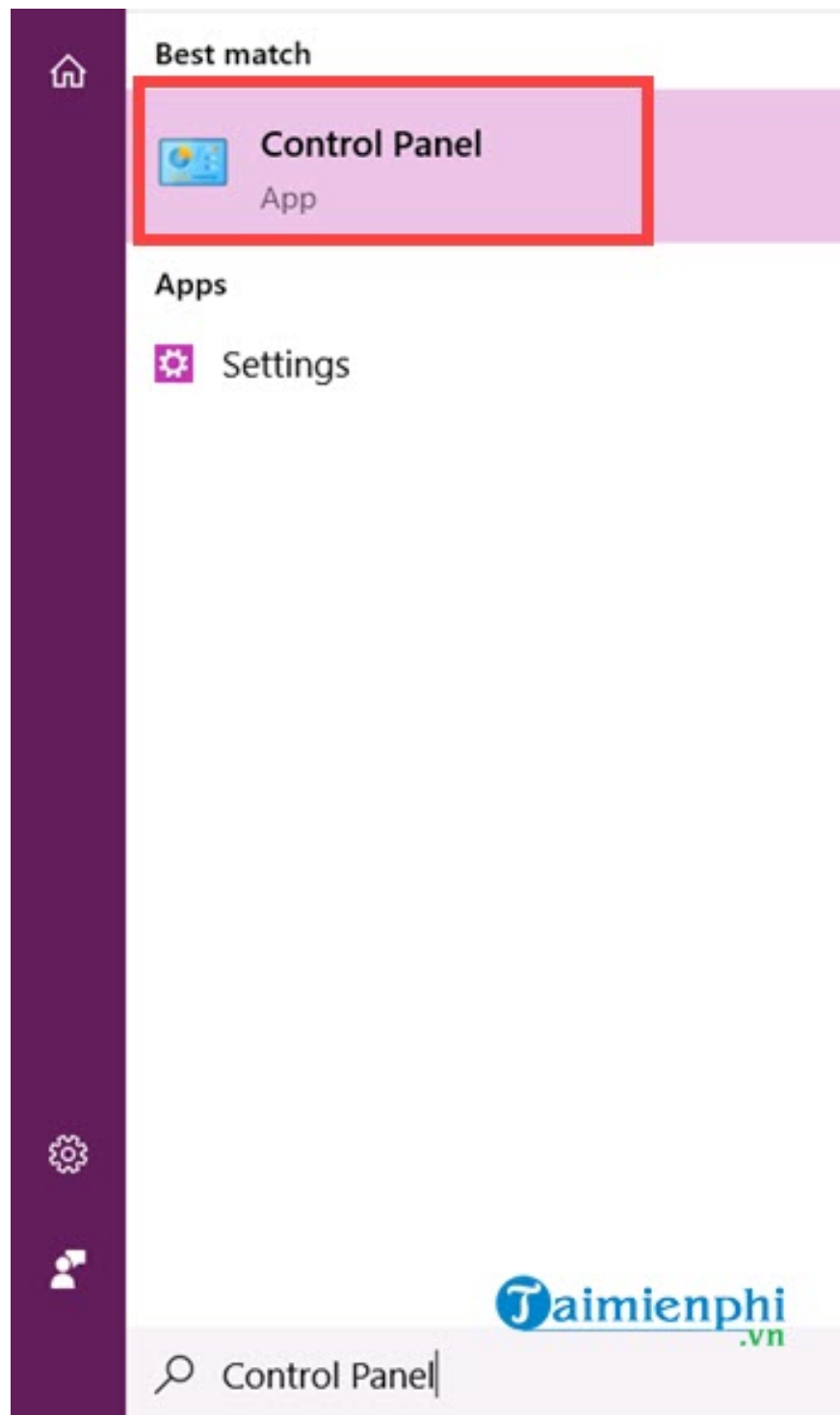
If you don't have a Windows password, just leave the box blank and select Next.

Current Windows password 

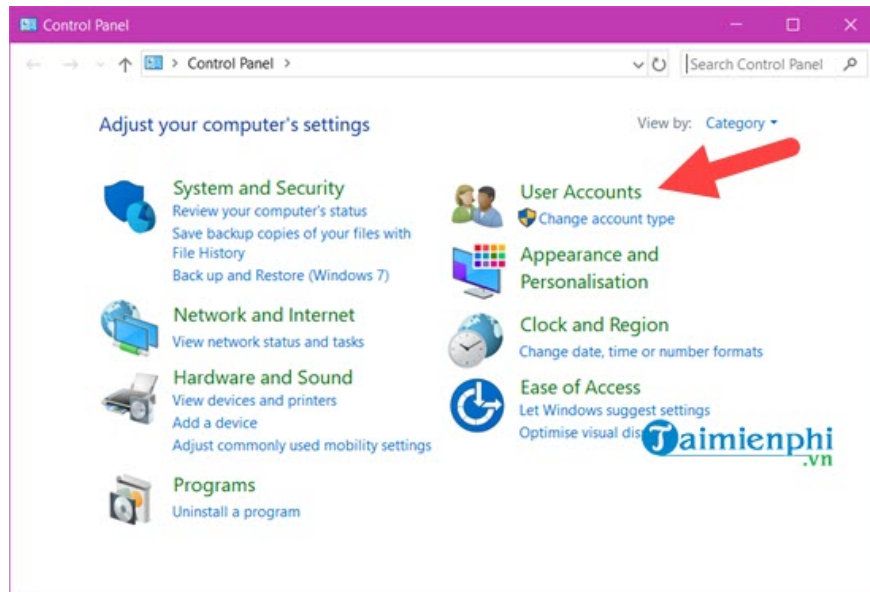
 

# Using Control Panel to set a password in Windows 10

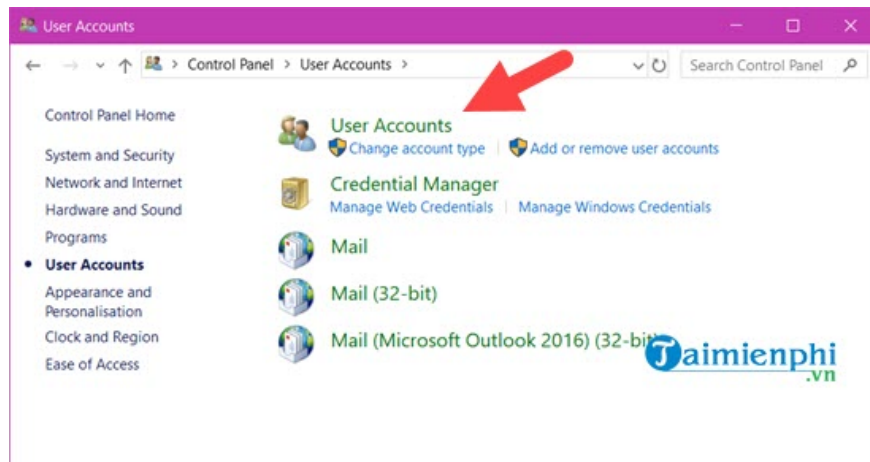
*Step 1:* First, open the **Start Menu** , then type "**Control Panel**" and access the search result.



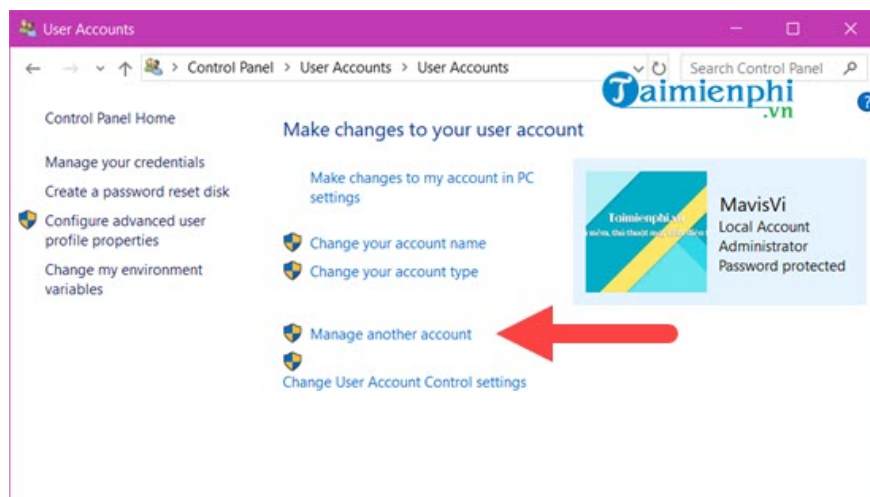
*Step 2:* The **Control Panel** interface will appear. Click on "**User Accounts**" (Note: click the correct word to access the correct section).



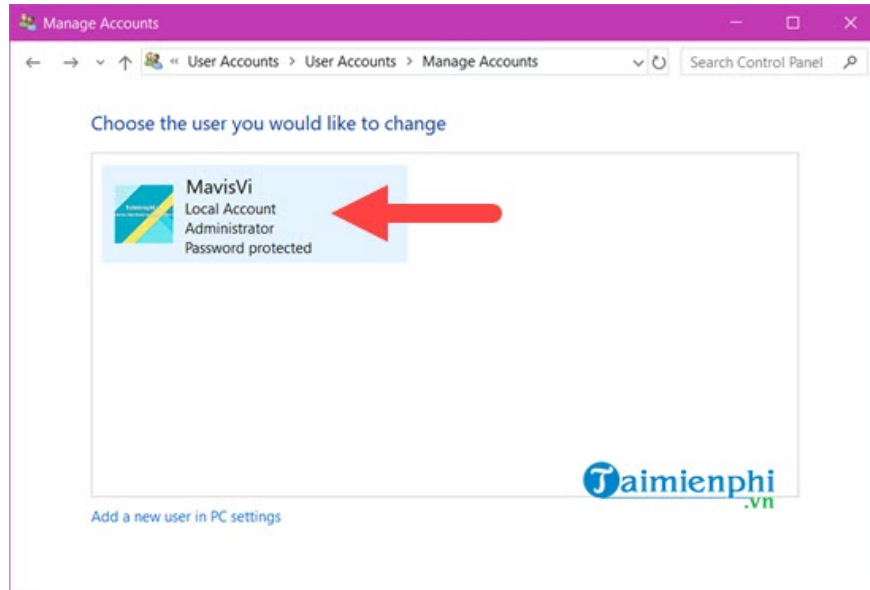
Step 3: In the "User Accounts" section , click on "User Accounts" again.



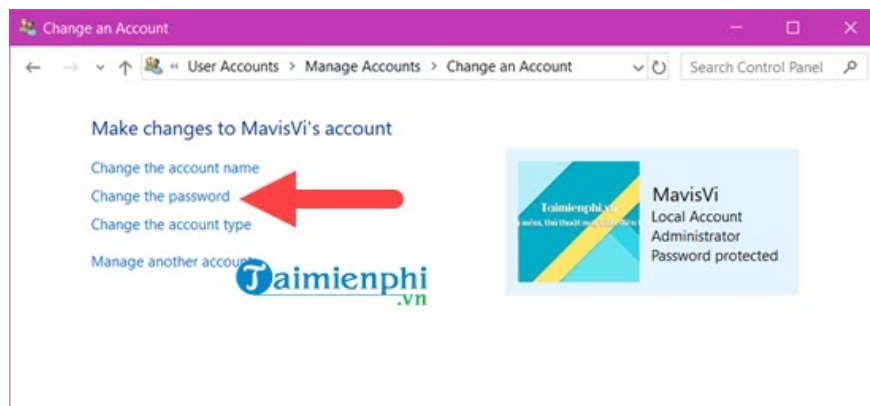
Step 4: Here, select "Manage another account" to manage any accounts on your computer.



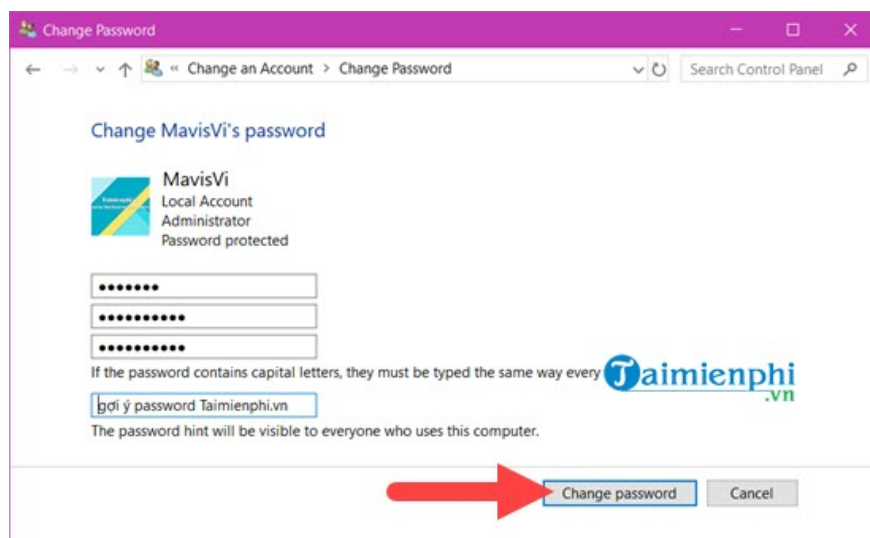
Step 5: Click on the account you want to set a password for. Of course, if you just installed the computer, this will be your main account.



Step 6: Select "**Change the password**" to change the password if you set it previously, or "**Create the password**" if this is your first time setting a password.



Step 7: Finally, enter your old password (leave it blank if it's your first time) and enter your new password twice. Below is a password hint, so you can choose whatever you like.



Setting a password on Windows 10 helps protect personal data and prevent unauthorized access. If you want to learn more computer security tips, check out [Free Downloads](#) now.

You finished reading the article "**How to set a password in Windows 10: Easy and detailed instructions.**" edited by the [TipsMake](#) team. We hope this article has provided you with many useful tech tips and tricks. You can search for similar articles on tips and guides. Thank you for reading and for following us regularly.