

How to set a password for Windows 10 computer, how to change Windows 10 password

Setting a computer password will help secure your computer better. In addition to setting a new password for your computer, TipsMake.com will also guide you how to change your Windows 10 computer password. Stay tuned.

From Windows XP to Windows 10, users always set up passwords to protect their personal computers. This is a simple and effective measure for computer users. On Windows 10 computers, the system interface has changed so we may have difficulty setting a password for the computer. If you are new to the Windows 10 interface, or do not know how to set a password for your Windows 10 computer, please follow the article below from Network Administrator.

How to set a Windows 10 password

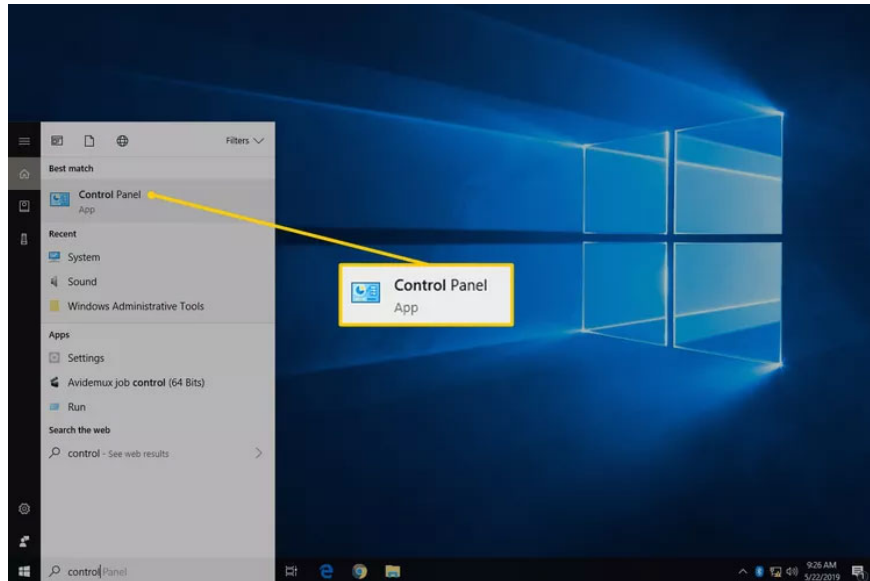
Should I use a PIN or password?

Both PINs and passwords have pros and cons when it comes to account protection. Although passwords can be more secure, because they include letters, symbols, and numbers, entering them can also be boring during the startup process, especially if the password is too complex. Conversely, a PIN may be easier to enter, but a simple PIN may not provide the level of security you desire.

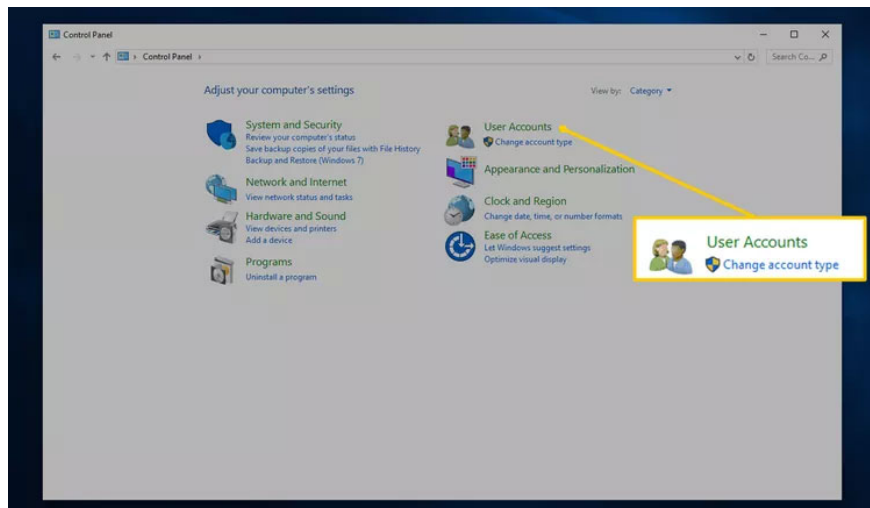
While you can set up a complex password that includes numbers, letters, and symbols, failing to secure it means that someone who gets your login information will have full access. into your Microsoft account.

How to set a password for your computer through Control Panel

1. Open Control Panel. The easiest way to do that is to type **control** from the Start menu or Run dialog box.

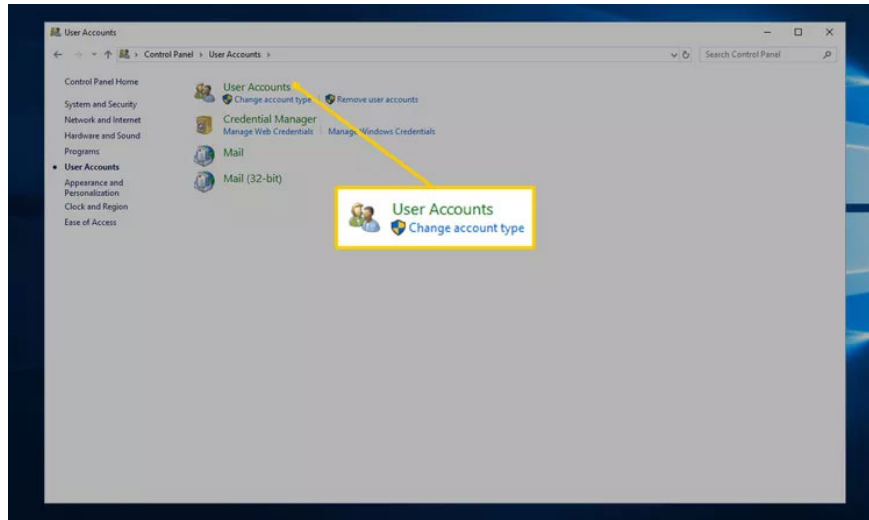


2. Select **User Accounts** .

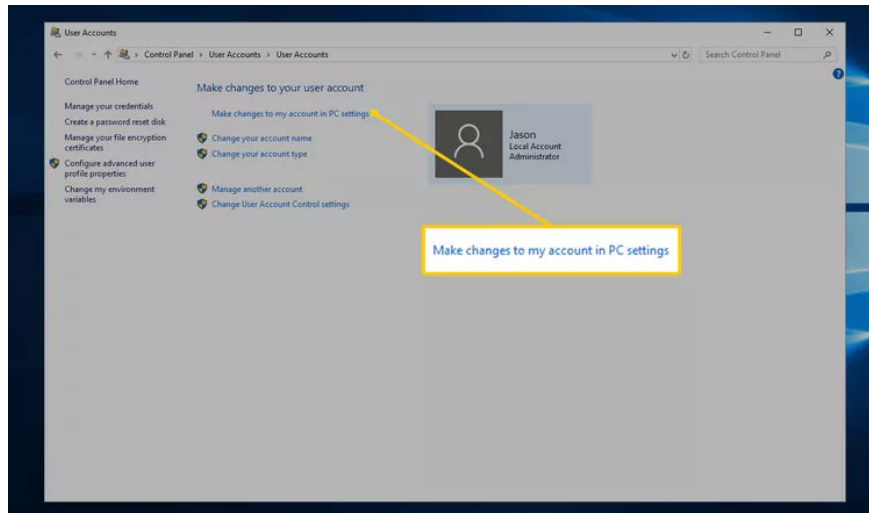


Note : If you are viewing applets by their icons instead of in category view on Windows 10, skip to step 4 after selecting **User Accounts** .

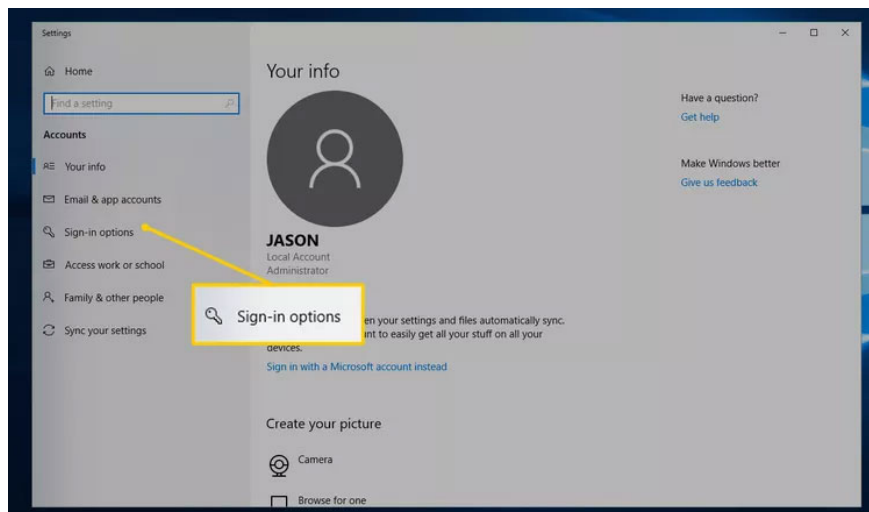
3. Open **User Accounts** .



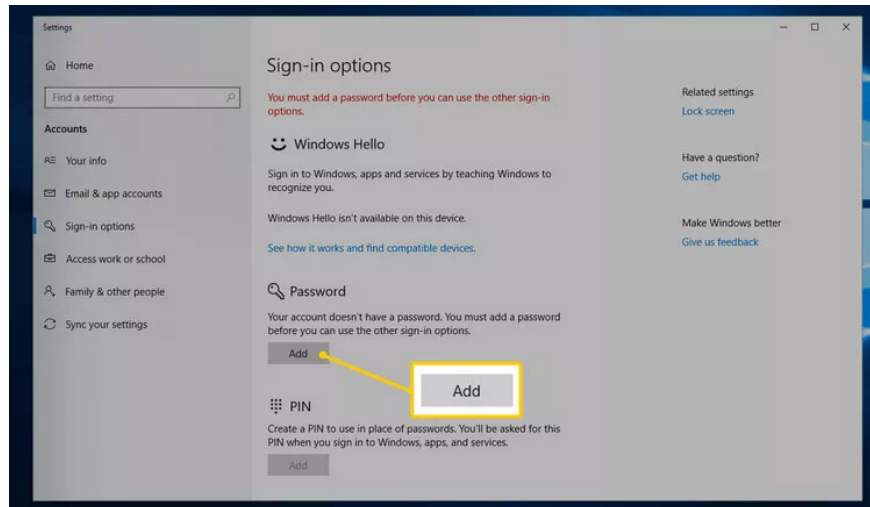
4. Select **Make changes to my account in PC settings** .



5. Select **Sign-in options** .

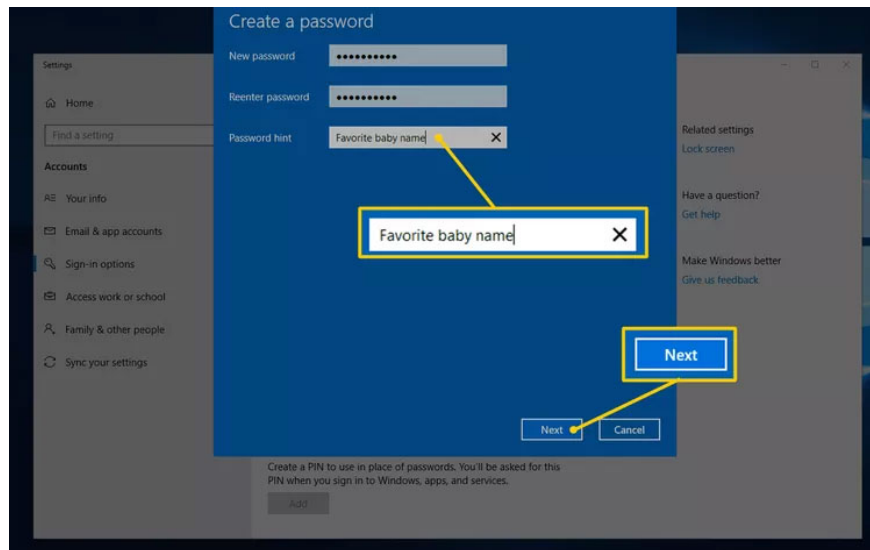


6. In the Password area , select **Add** .

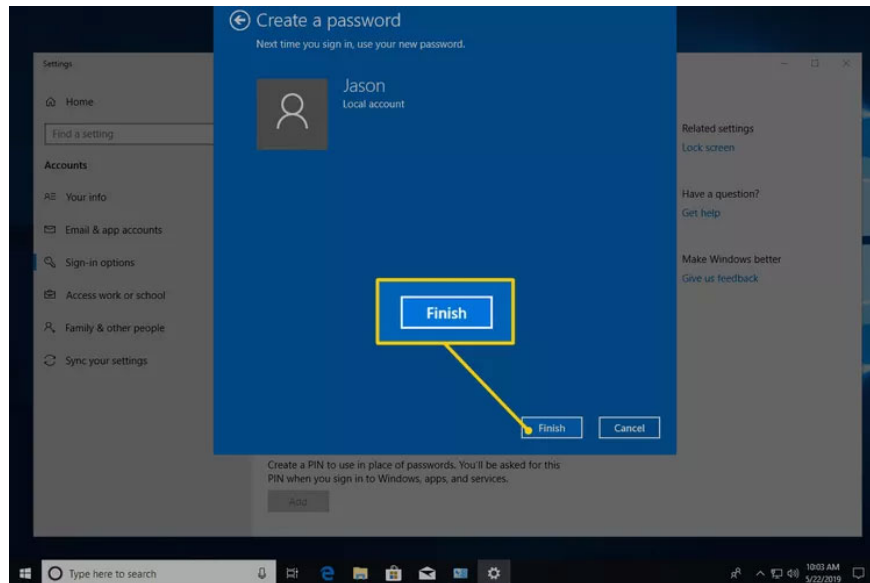


7. Enter the new password in the first two text fields. You must do it twice to ensure you type the password correctly.

8. In the **Password hint** field , enter something that will help you remember your password if you forget it, then select **Next** .



9. Click **Finish** to complete setting up the new password.

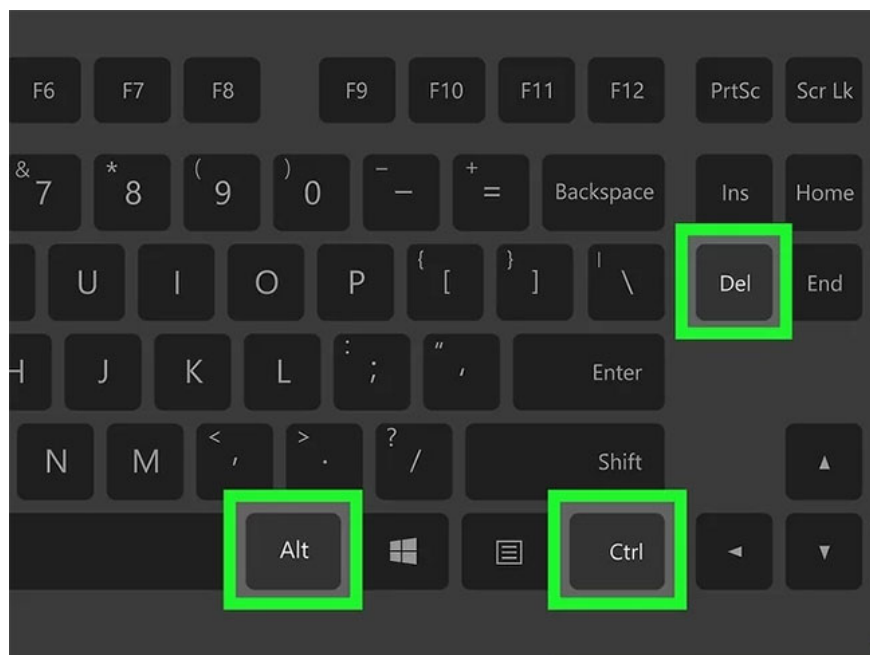


10. Now you can exit any windows you opened to create your password, like **Settings** or **PC settings** .

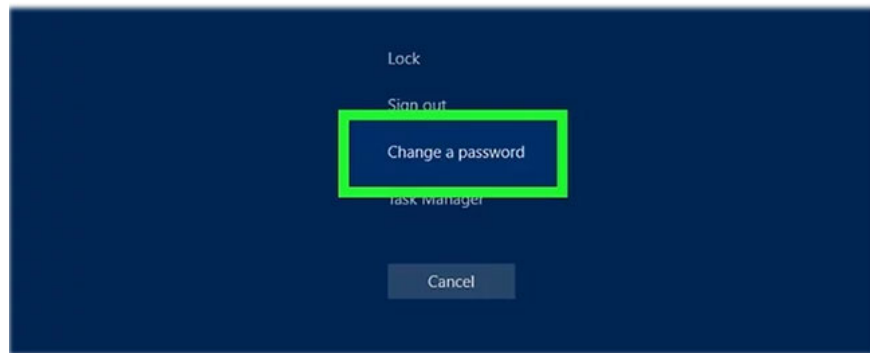
Note : You should create a password reset drive after creating a new password. If your password is really complex and you don't want to create a reset drive, consider storing it in a password manager.

How to set a password for your computer via Ctrl + Alt + Delete

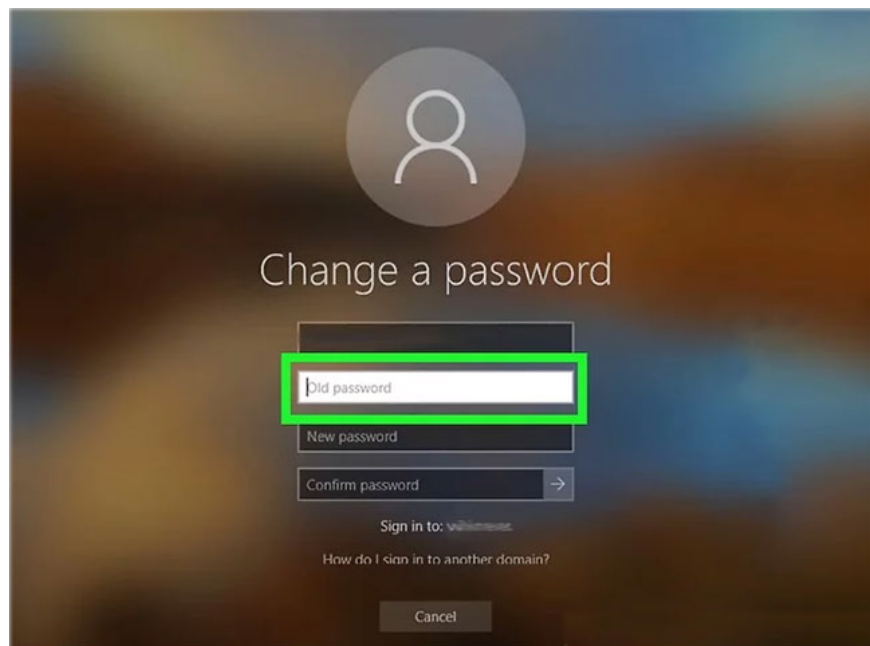
1. Press **Ctrl + Alt + Del** .



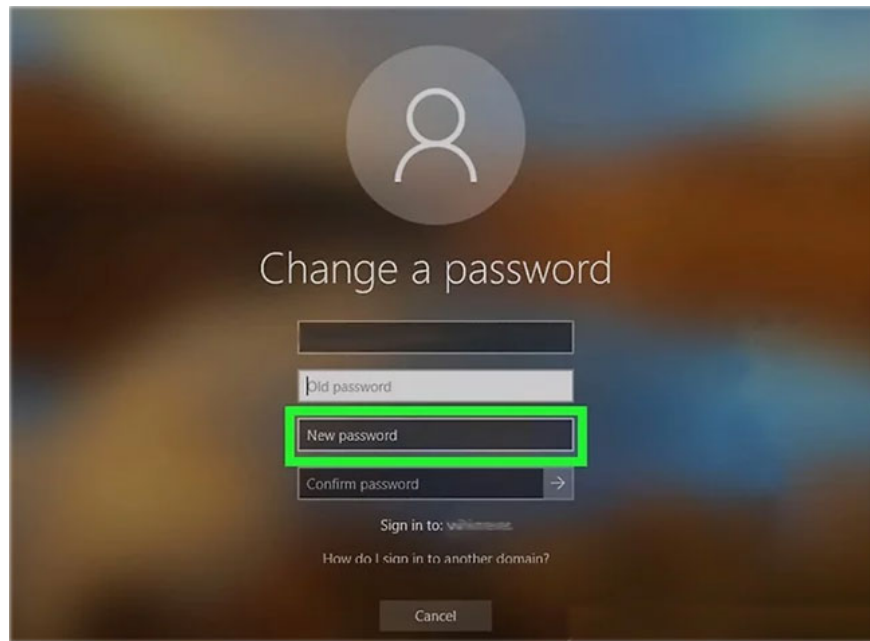
2. Click **Change a password** .



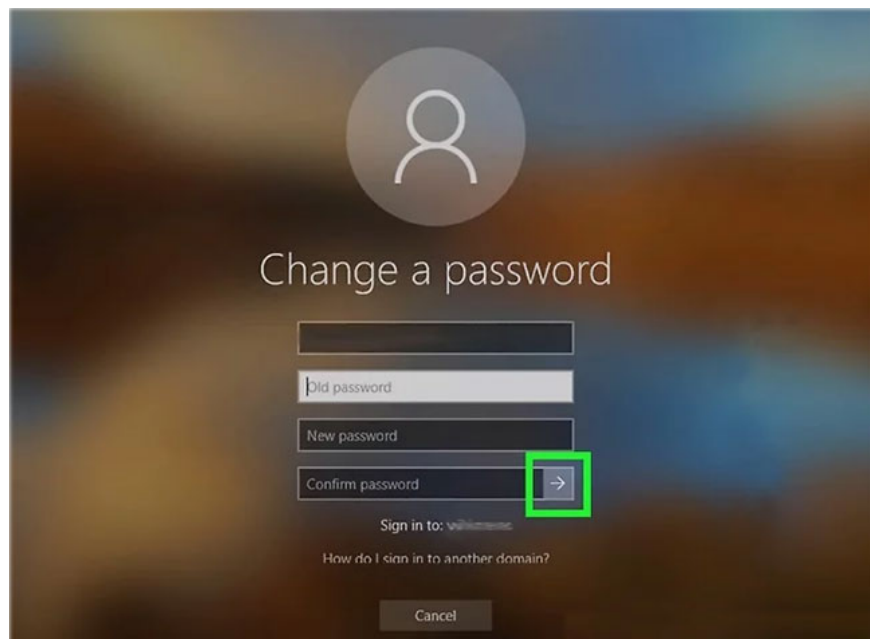
3. Enter your old password. If you have never set a password, leave this box blank.



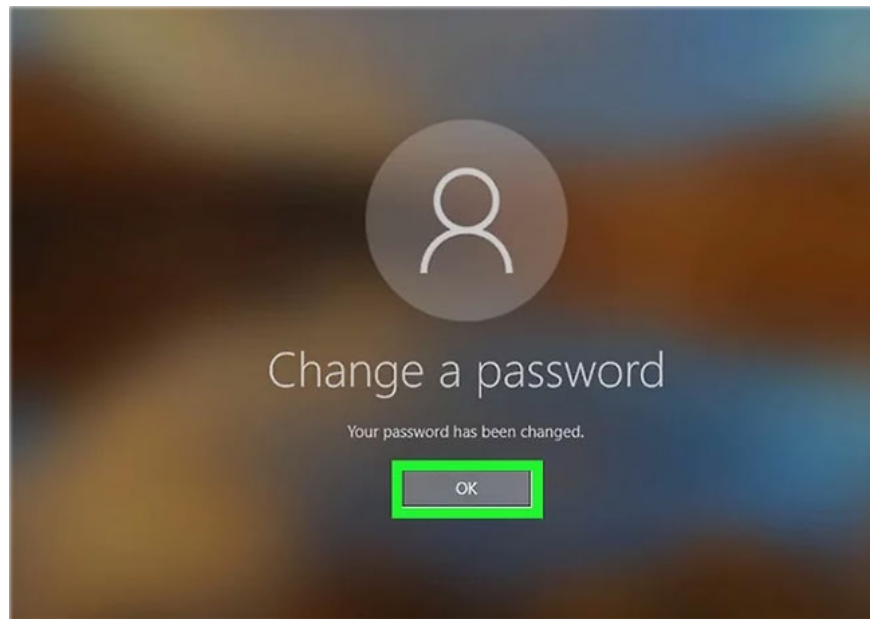
4. Enter your new password. You will have to enter it twice to make sure you don't make a mistake.



5. Click **Submit**. It is the arrow at the bottom of the **Confirm password** box.



6. Click **OK**.

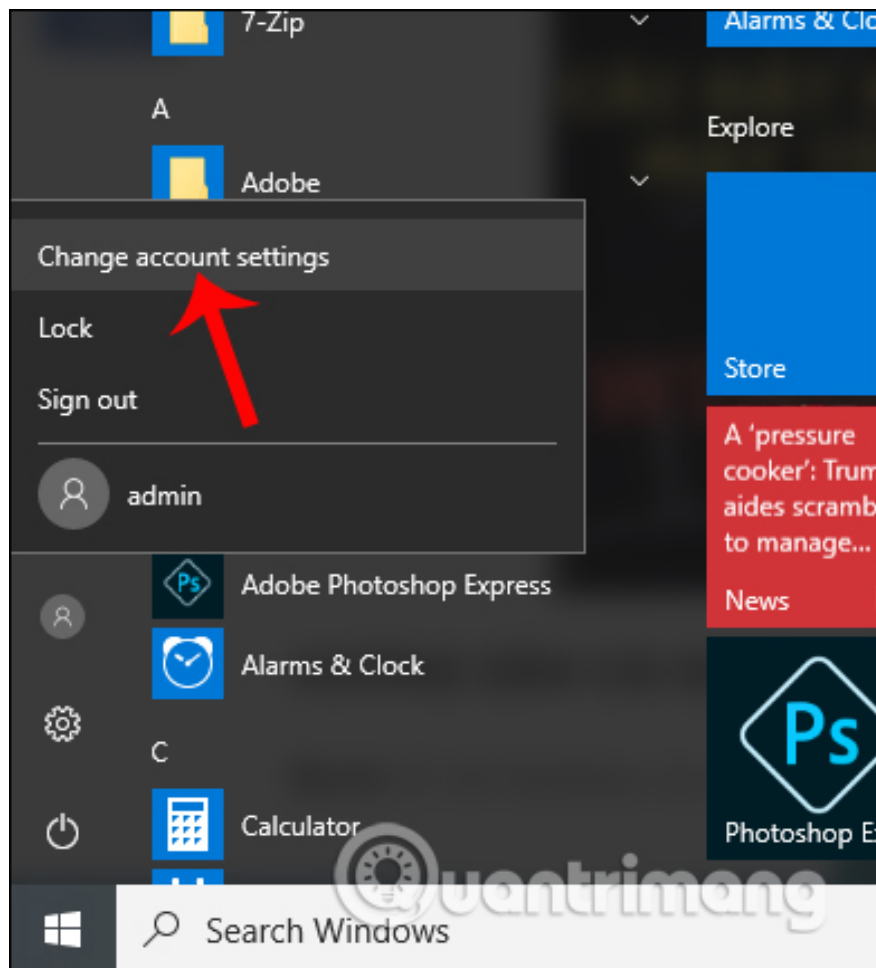


Now. You have successfully set a password on your computer. Whenever you log in, you will have to enter this password.

How to set a password for your computer through Settings

Step 1:

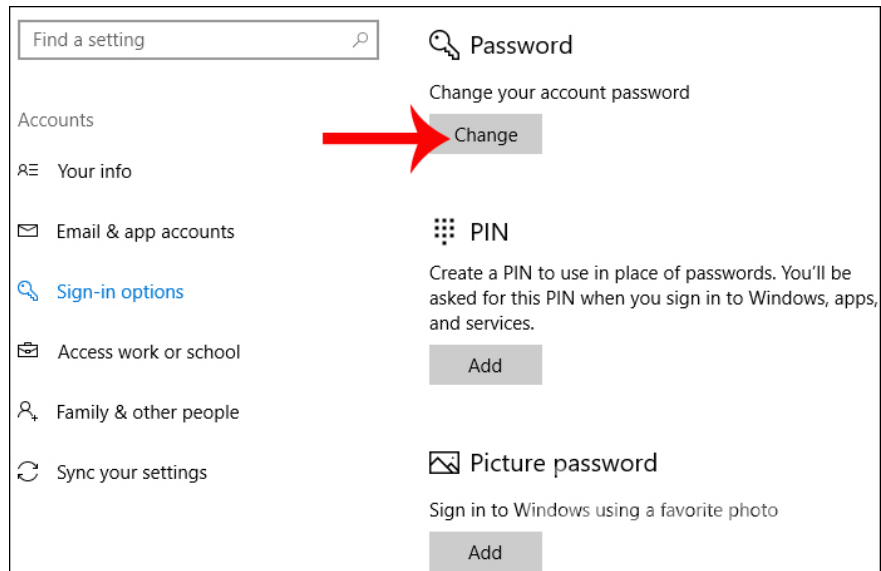
We click on **the Start icon** in the bottom left corner of the computer, select **the humanoid icon** and click on **Change account settings**.



Step 2:

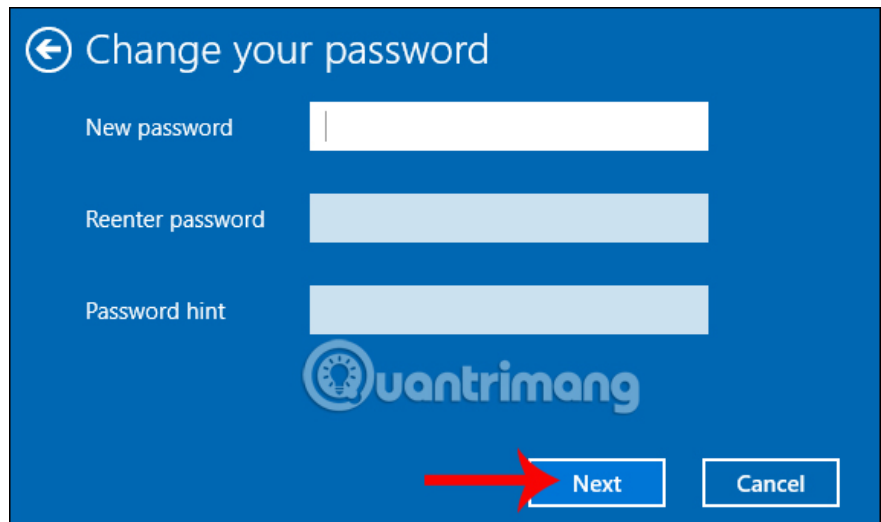
In the Accounts interface, click on **Sign-in options** . Then, if you look at the content on the right, you will see 3 options for creating a password for Windows 10, including creating a regular password (Password), creating a password with a pin code that only uses numbers (PIN), and creating a login password with Picture (Picture password).

If you want **to create a regular Windows 10 security password** , click **Change at Password** .



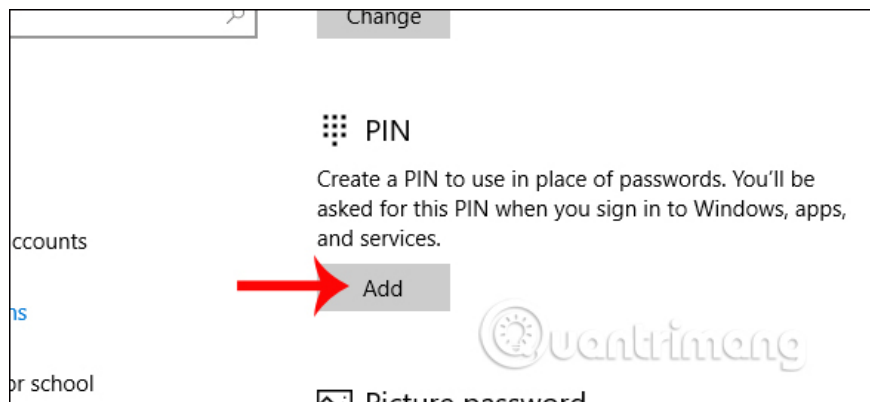
Step 3:

We will enter the password in **the New password box**, repeat the password in Reenter password, type a password hint in Password hint if you forget your computer login password. Then **click Next** below. Finally click Finish to complete setting the password.

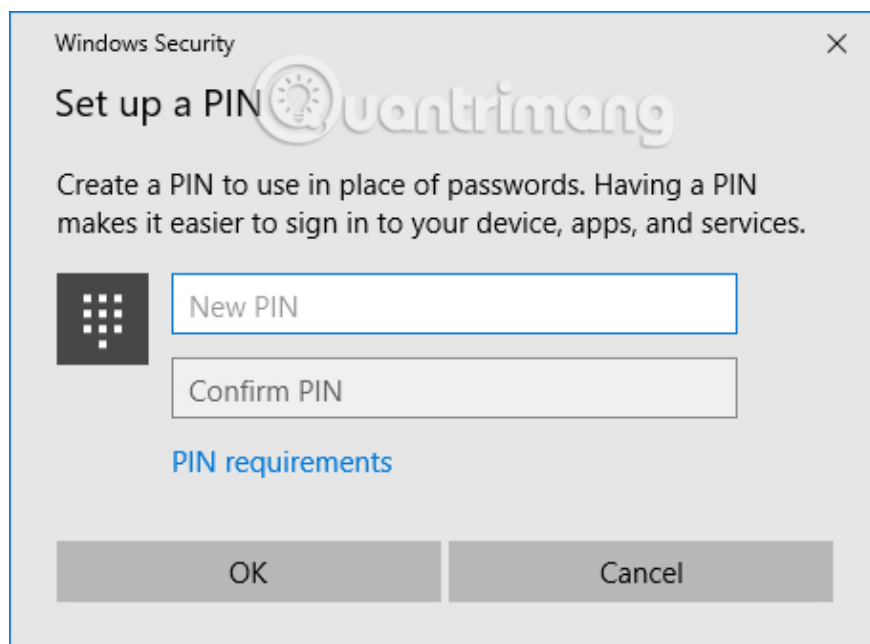


Step 4:

If you want to use a **PIN** to set a **Windows 10 login password**, click **Add** in the **PIN** section .



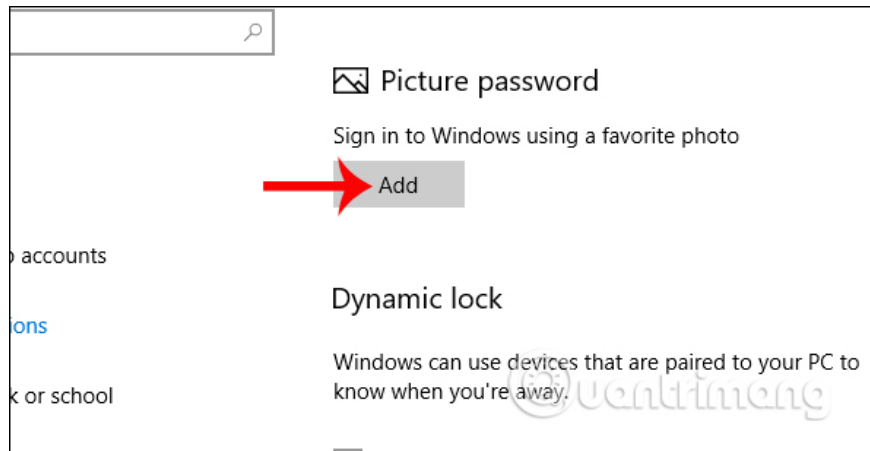
Then we enter the PIN code as numbers into this interface.



Besides, we can customize the length and shortness of the PIN code or the usage time for the PIN code on Windows 10 according to the article below.

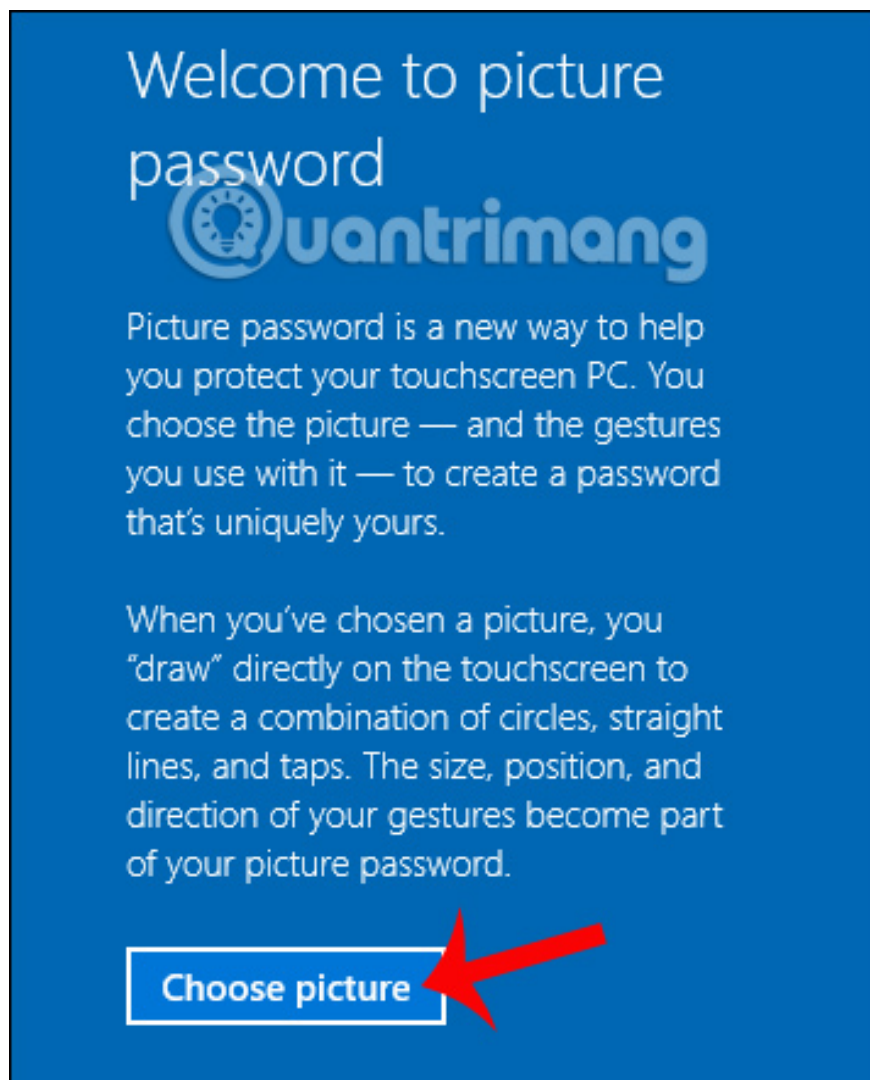
Step 5:

If you want to **set a Windows 10 password with a picture** , click **Add** in the **Picture Password** section .



Then click **Choose picture** to select an image to use as your Windows 10 computer login password. However, this method is quite complicated because you will need to identify 3 pixels and draw a pattern to unlock the computer.

Therefore, you should choose to create a regular password or use a PIN code to create a login password on Windows 10.



So when logging into your computer, you will need to enter the correct password you created before.

How to change Windows 10 password

Some notes about changing passwords on Windows 10

In Windows 10, it is possible to choose between two different account types: Microsoft account and local account.

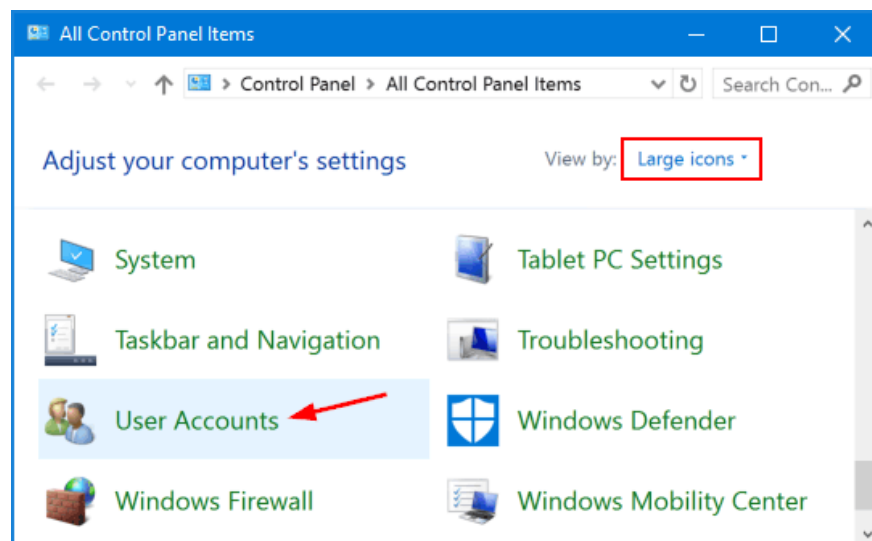
A Microsoft account requires Internet access, allows you to sign in to multiple computers with the same credentials, and allows access to the Microsoft Store. In contrast, local accounts are reserved for personal computers only.

Changing a local account password does not affect any other services. However, changing your Microsoft account password means the new password must be used everywhere the account is located.

Quick tip: If you don't have a Microsoft account and want to create one, read TipsMake's article on how to create a Microsoft account.

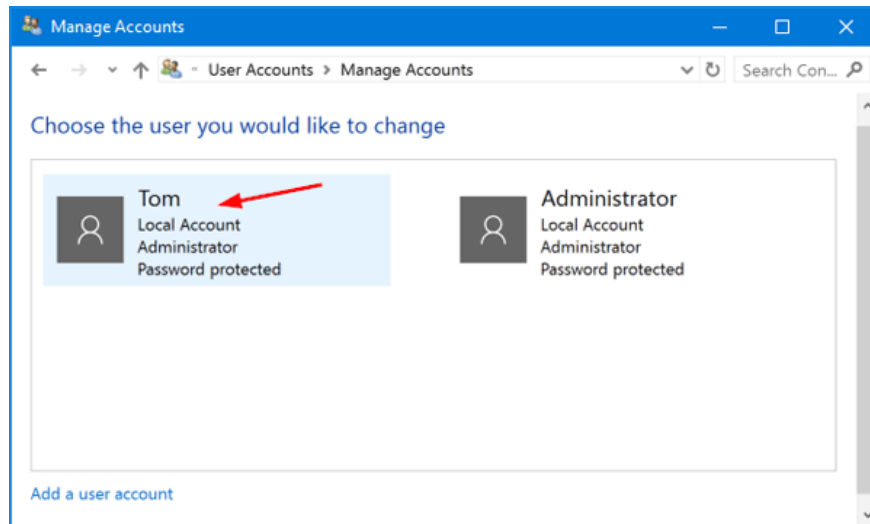
Change Windows 10 password from Control Panel

1. Open Control Panel. Set the **View by** option to **Large icons**. Click **User Accounts**.



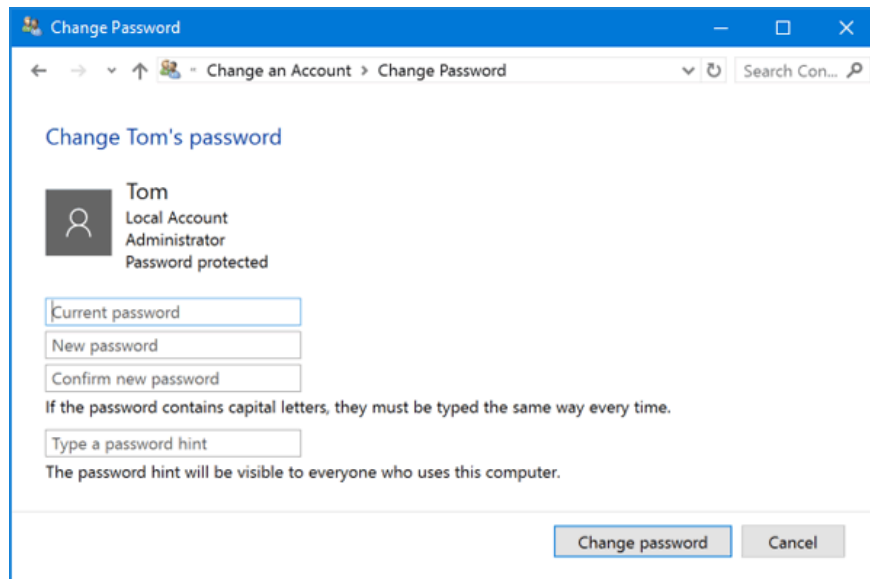
2. Click the **Manage another account** link .

3. Click the user account for which you want to change the password.



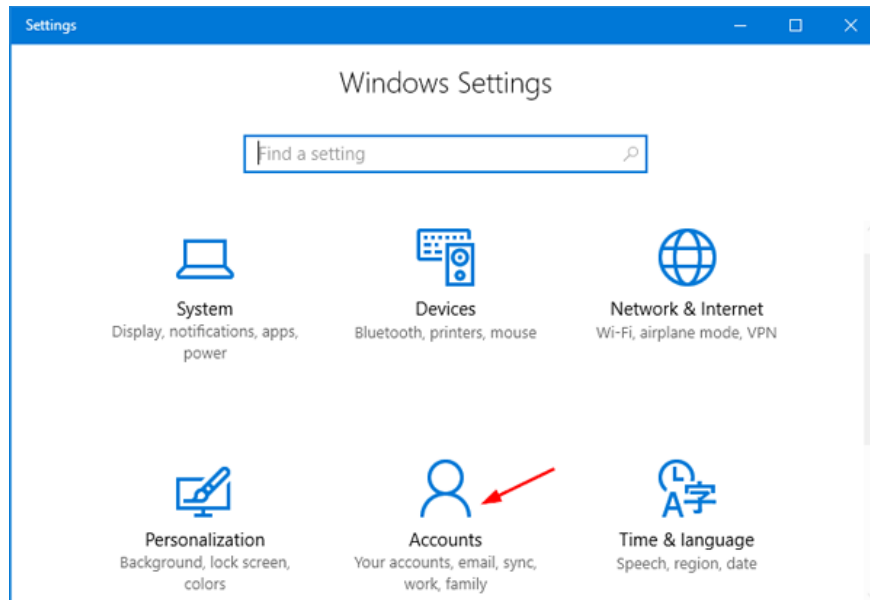
4. On the next screen, click on the **Change the password** option.

5. Enter the current password and then enter the new password you want to use. Click **Change password**.

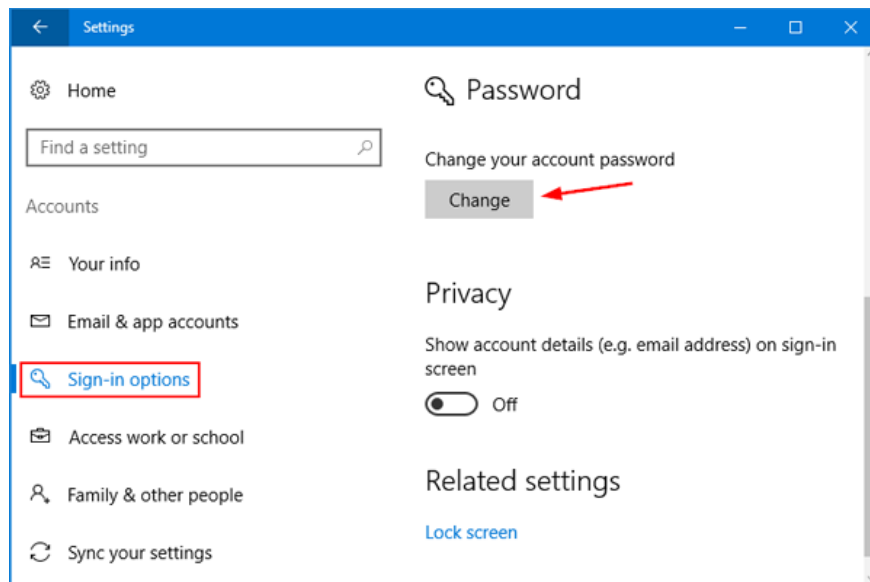


Change Windows 10 password from PC Settings

Win+I. Press the + keys I to open the Settings application. Click **Accounts**.

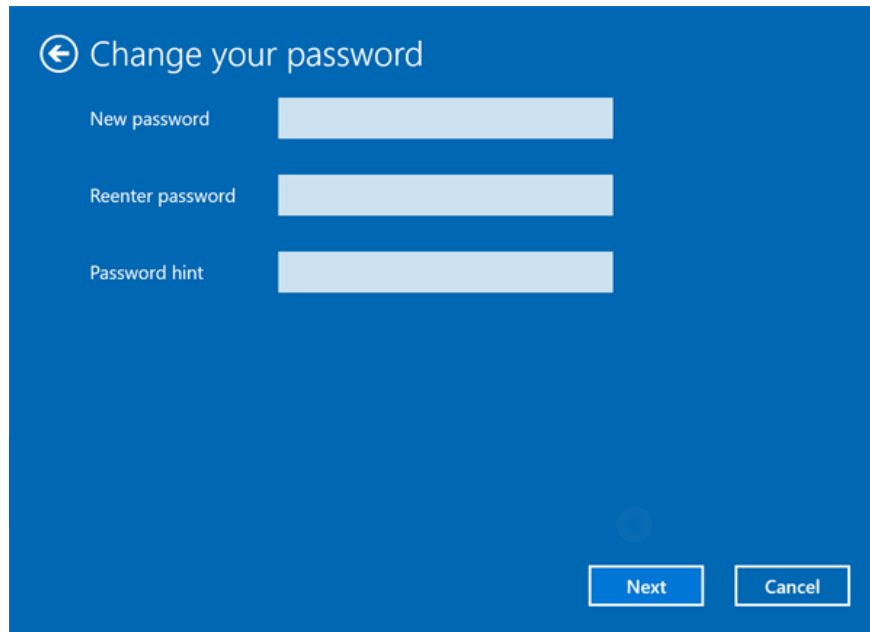


2. Click the **Sign-in** option on the left and click the **Change** button in the **Password** section on the right.



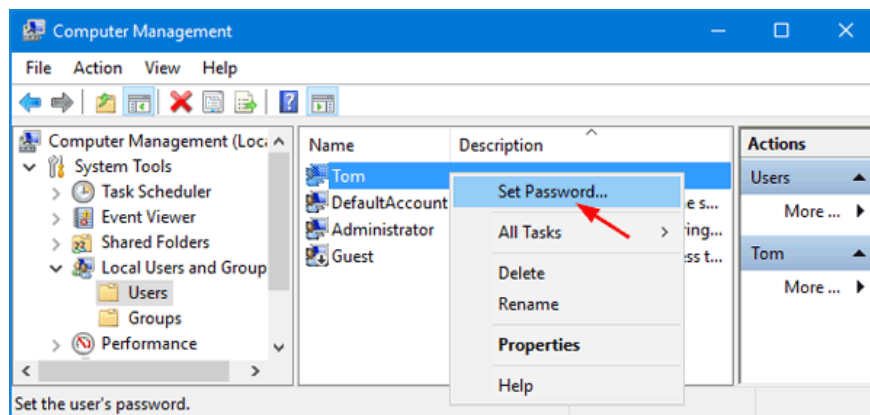
3. Enter your current password and click **Next**.

4. Enter the new password twice and set a password hint. Click **Next**.

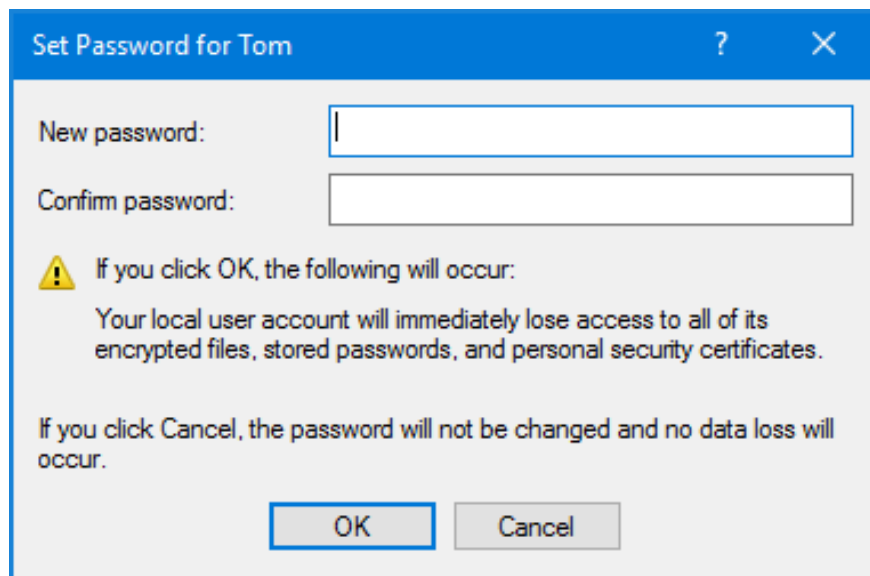


Change Windows 10 password from Computer Management

1. **Right-click the This PC icon** on the desktop and then select **Manage**.
2. In **Computer Management** , expand **Local Users and Groups > Users** on the left. Right-click the desired user in the middle, then select **Set Password**.



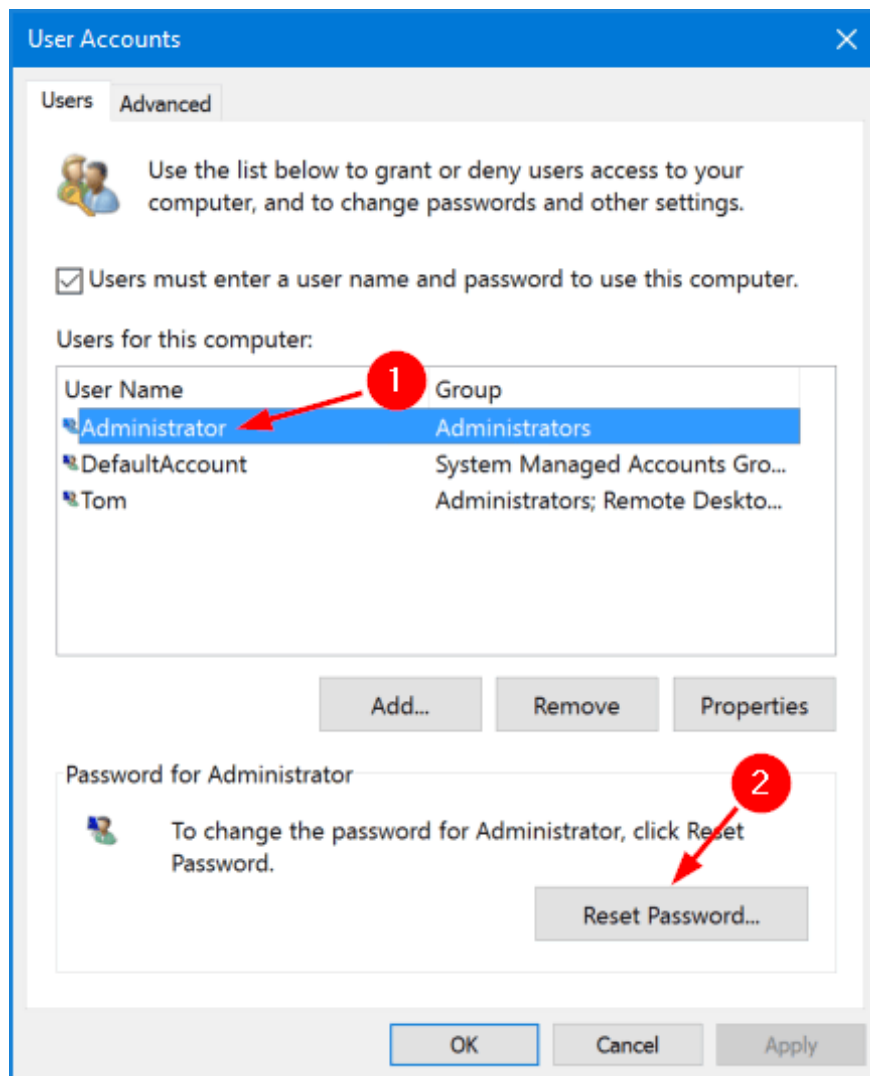
3. Click the **Proceed** button to confirm.
4. Enter the new password twice and click **OK**.



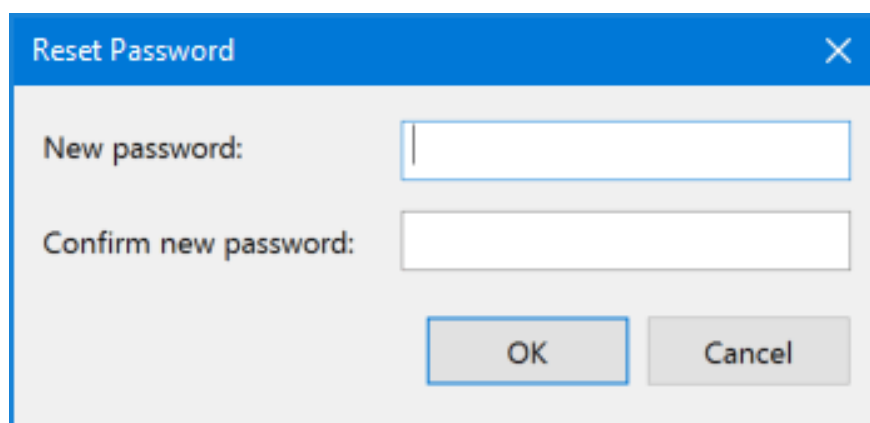
Change Windows 10 password with Netplwiz

Win+R. Press the + keys R together to open the **Run box**. Type **netplwiz** and press Enter.

2. In the User Accounts window , select a user account whose password you want to change and then click the **Reset Password** button.



3. Enter the new password for the user account, then click **OK**.

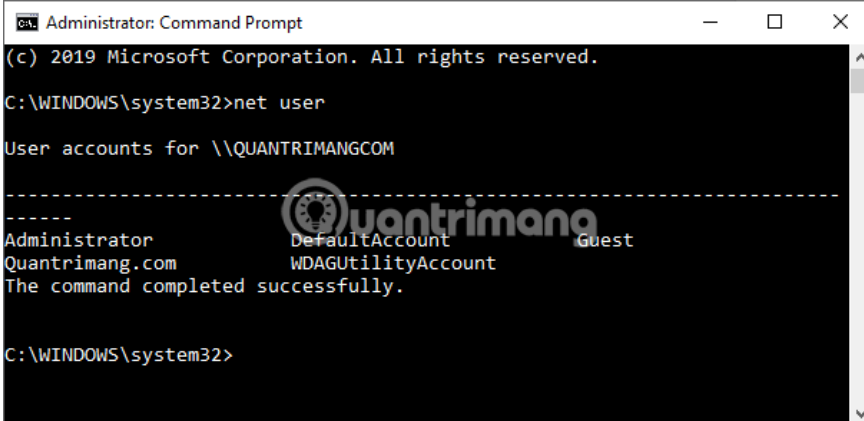


How to change Windows 10 password using cmd command

In addition to using settings to set and change passwords, you can use cmd commands to do this on all versions of Windows. Follow these steps:

1. , enter the following command to list all existing accounts on the device and press Enter:

```
net users
```



```
Administrator: Command Prompt
(c) 2019 Microsoft Corporation. All rights reserved.
C:\WINDOWS\system32>net user

User accounts for \\QUANTRIMANGCOM

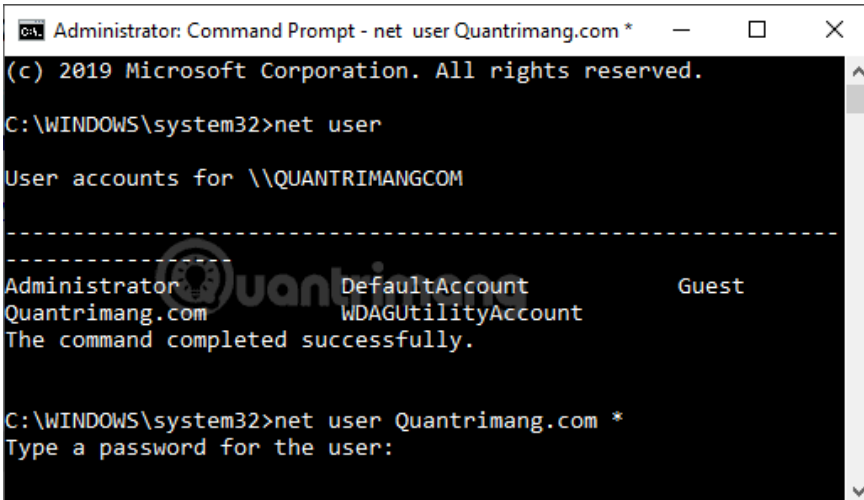
-----
Administrator          DefaultAccount          Guest
Quantrimang.com        WDAGUtilityAccount
The command completed successfully.

C:\WINDOWS\system32>
```

1. Enter the following command to change the password for the account and press Enter:

```
net user USERNAME *
```

1. In this command, you change USERNAME to the account name that needs to change the password. For example, here I want to change the password for the TipsMake account, the command will become: **net user TipsMake *** as below:



```
Administrator: Command Prompt - net user Quantrimang.com *
(c) 2019 Microsoft Corporation. All rights reserved.
C:\WINDOWS\system32>net user

User accounts for \\QUANTRIMANGCOM

-----
Administrator          DefaultAccount          Guest
Quantrimang.com        WDAGUtilityAccount
The command completed successfully.

C:\WINDOWS\system32>net user Quantrimang.com *
Type a password for the user:
```

1. Enter a new password for the user and press Enter.
2. Enter the new password again to confirm and press Enter.

Once you complete the above steps, sign out of your Windows 10 account and sign back in to use the new password. If the account on your Windows 10 computer is linked to a Microsoft account, the above steps to change the password will not be applicable. You need to change your Microsoft account password to do so.

How to change Microsoft account password

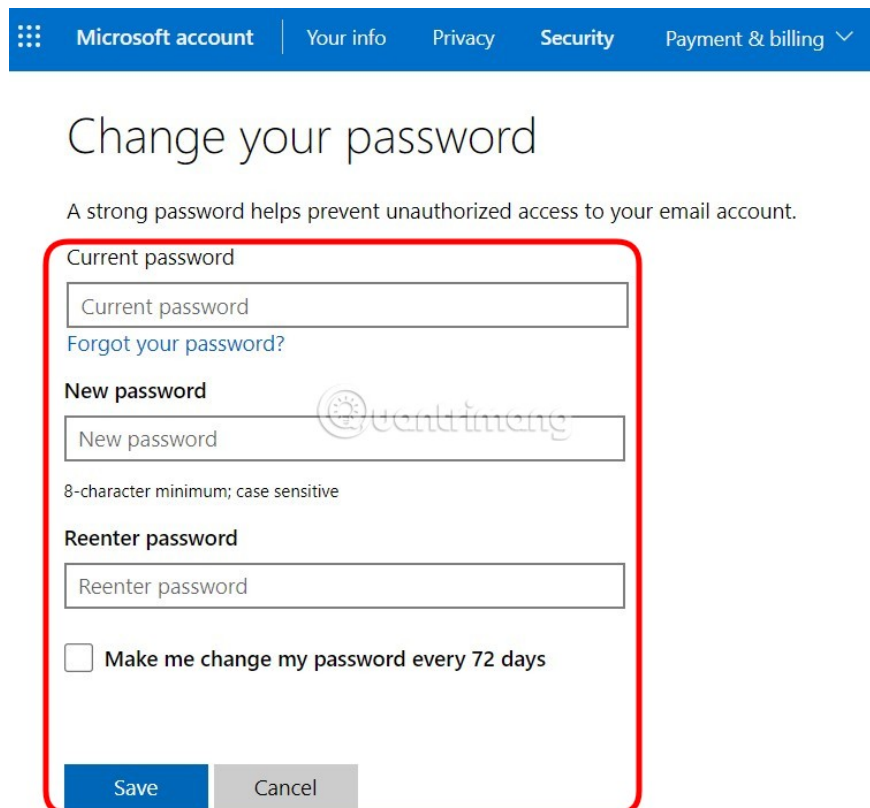
When you link your computer to your Microsoft account, the Microsoft account password will be used as your computer login password. At that time, if you want to change your computer login password, you need to change your Microsoft account password. The steps are as follows:

Step 1 : Open any browser you like and go to Microsoft Account Management Page.

Step 2 : Click **Change password**.



Step 3 : Here, enter your current password in the **Current password box**, click the new password in the **New password box** and re-enter the new password in the **Reentered password box**.



Step 4 : After entering the password, click **Save** to complete. If you want Microsoft to remind you to change your password every 72 days to ensure safety, you can check the box next to the words " **Make my change my**

password every 72 days ".

Remove Windows 10 computer password

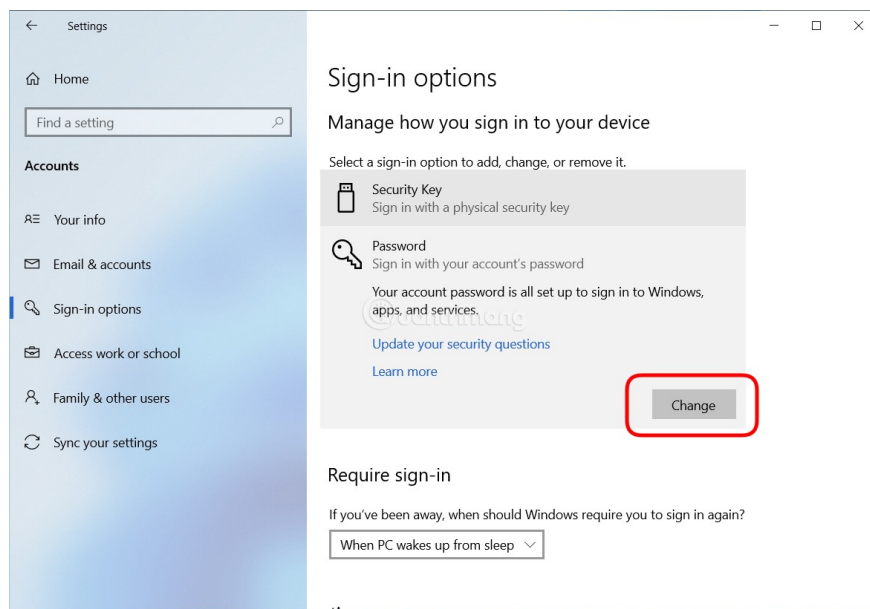
In addition to changing your password to another password, many people also need to delete their password to log in quickly. Removing your password will help you access your computer faster, but it does not guarantee safety if you have "confidential documents" stored on your computer. Therefore, please consider before doing it.

Step 1 : Press **Win + I** to open **Settings**.

Step 2: Click **Accounts**.

Step 3 : Click **Sign-in options**.


Step 4 : In the **Password** section , click the **Change** button.




Step 5 : Enter your current password and click **Next**.

Change your password

First, confirm your current password.

 user

Current password



Step 6 : Do not enter anything, click **Next** , then click **Finish** to complete the account deletion.

The image shows a blue-themed user interface for changing a password. At the top left, there is a back arrow icon followed by the text 'Change your password'. Below this, there are three input fields: 'New password', 'Confirm password', and 'Password hint'. Each field is represented by a light blue rectangular box. In the center of the screen, there is a logo for 'uantrimang' which consists of a circular icon with a gear-like pattern and the text 'uantrimang' to its right. At the bottom right, there are two buttons: 'Next' and 'Cancel'. The 'Next' button is highlighted with a red rectangular border.

What is the strongest password on a computer?

Oddly enough, most passwords can be found quite easily and quickly by curious people. Besides, the secret of any good password is not only its reliability but also its memorability.

Regardless, if you want to effectively password protect your system, you should follow these effective tips and rules:

1. Use both uppercase and lowercase letters,
2. Add additional numbers, special symbols and signs,
3. Don't use information that everyone knows, such as your name, date of birth, and location,
4. Create a password with at least 5 to 6 characters,
5. Try to remember all your passwords, instead of writing them down.
6. Only a complex password can be a good barrier to securing your data. In any case, unreasonably long passwords (more than 8-10 characters) can become a problem for users, as they can be easy to forget and difficult to recall.

Why is it so important to set a password on your PC?

There's no doubt that protecting your desktop or laptop with a password is as important as the data you need to secure. Remember that it will limit the individuals who can access your computer. This way, your data will be protected and you won't run the risk of someone else taking any personal information without your consent.

Then again, it's important to highlight what a suitable password means, which means adopting a password that only you know and is easy for you to remember, but not for other users.

Furthermore, the article recommends that you take into account the security tips given above when logging into Windows 10, to avoid being stolen.

Above is how to set a password for a Windows 10 computer, in 3 different ways set by regular password, by PIN code and by image. However, the simple and effective way that many people choose is to set a regular password and use a PIN code.

Wishing you success!

You finished reading the article "**How to set a password for Windows 10 computer, how to change Windows 10 password**" edited by the [TipsMake](#) team. We hope this article has provided you with many useful tech tips and tricks. You can search for similar articles on tips and guides. Thank you for reading and for following us regularly.