

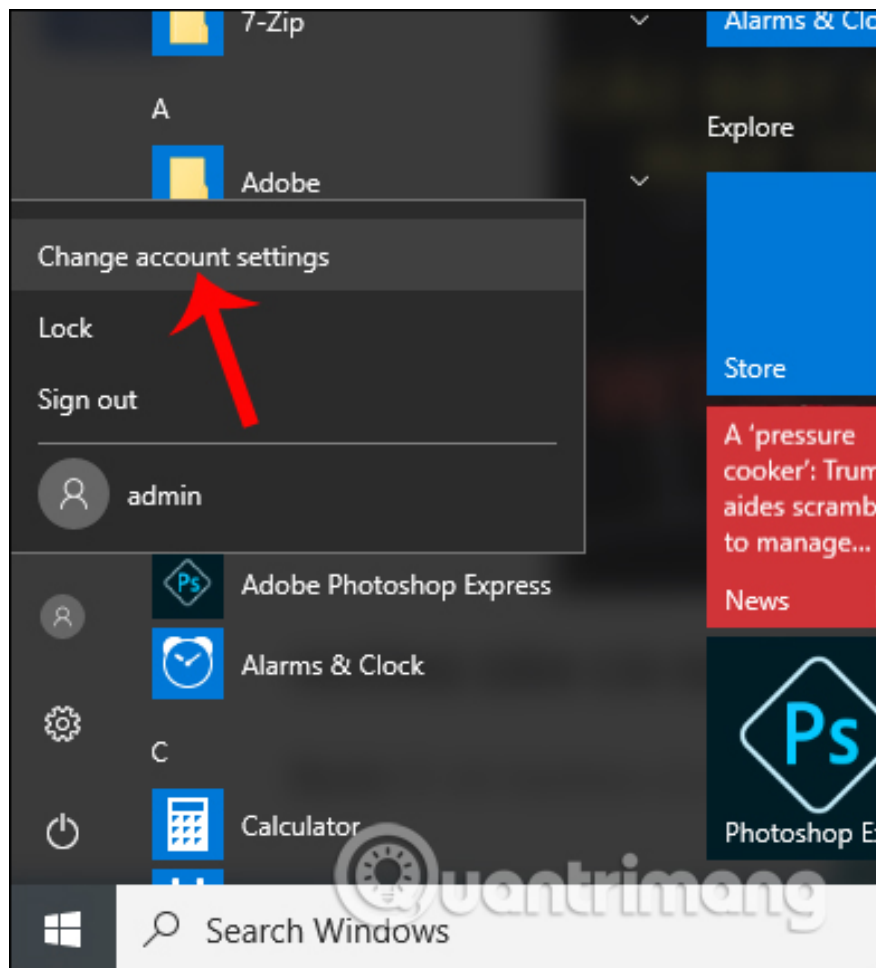
How to set a password for a Windows 10 computer

Setting a password for Windows 10 computer will help users to secure personal information, data on the computer, avoid being looked at by others.

Installing computer passwords is the most secure and popular way of securing computers. From Windows XP to Windows 10, users always set a password to protect their personal computers. This is a simple and effective measure for the security of computer users. On Windows 10 computers, the system interface has changed so that we will probably have difficulty installing the password for the computer. If you are new to the Windows 10 interface, or do not know how to set a password for a Windows 10 computer, follow the article below of Network Administrator.

Step 1:

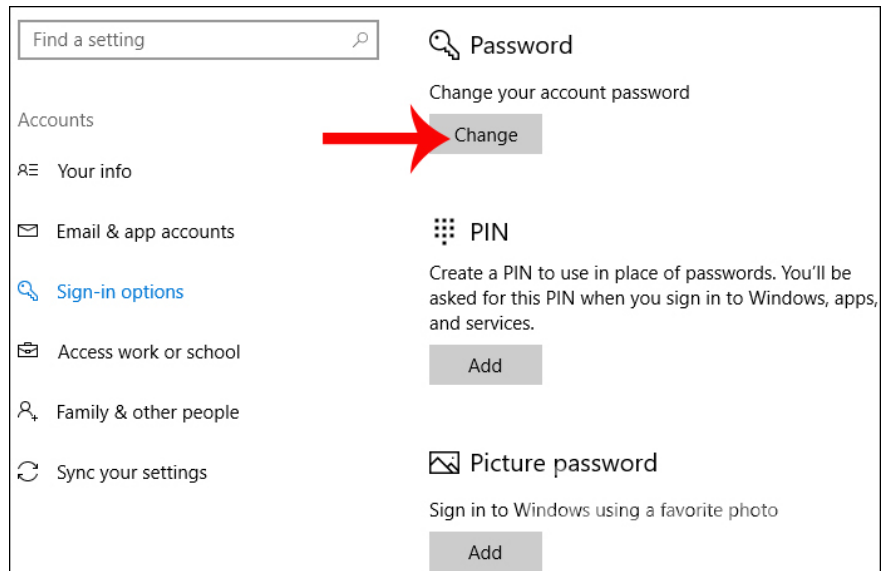
We click on **the Start icon** in the bottom left corner of the computer, select **the human icon** and click on **Change account settings**.



Step 2:

In the Accounts interface click on **Sign-in options** . Then you look at the content on the right to see there are 3 options to create a password for Windows 10, including creating a normal password (Password) to create a password with a pin-only number (PIN) and create a login password with image (Picture password).

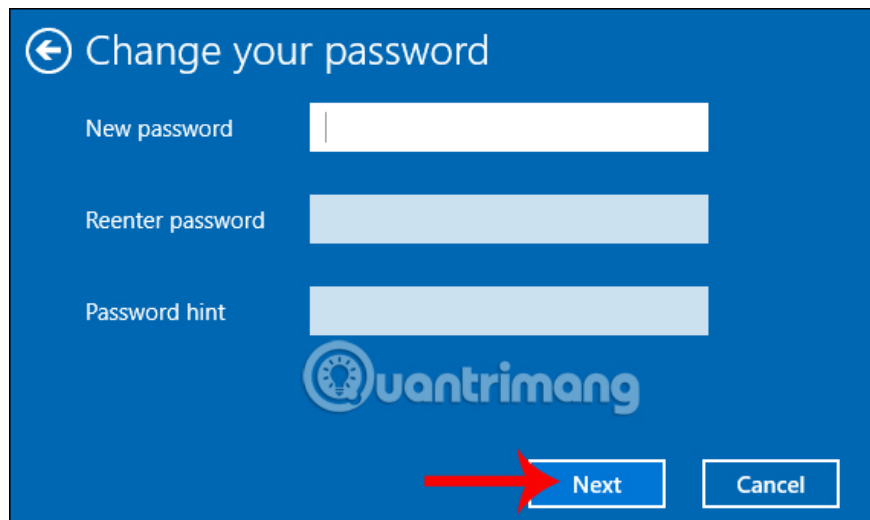
If you want to **create a secure Windows 10 password** , click **Change at Password** .



Step 3:

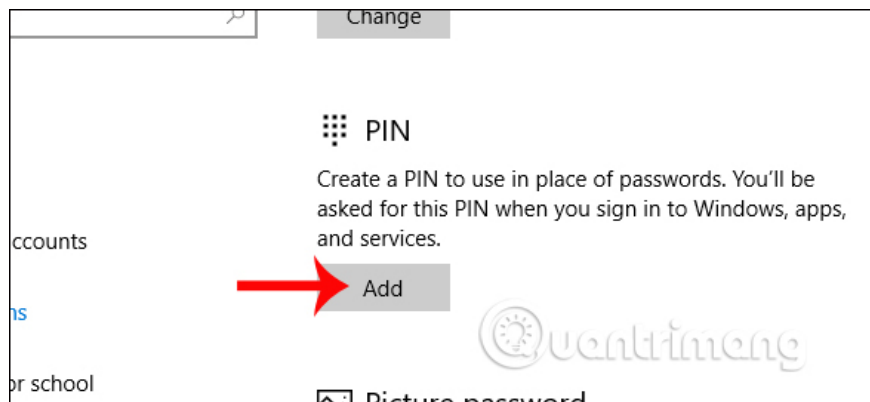
We will enter the password into **the New password box**, repeat the password to Reenter password, type the password hint at Password hint if you forget the login password. Then **click Next** below. Finally click Finish to complete the password.

1. Forget Windows 10 password, this is how to break password Win 10 without using 3rd tool

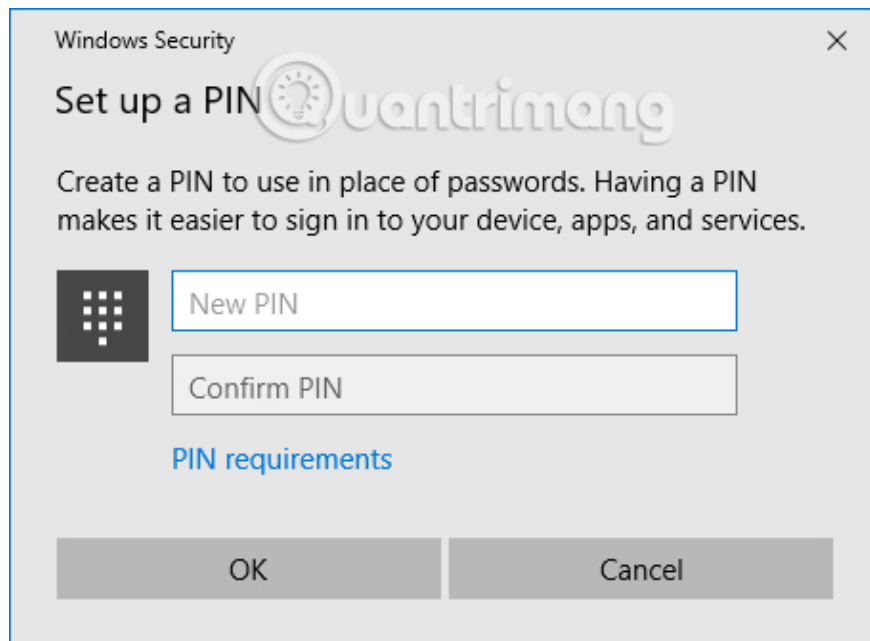


Step 4:

If you want to use **PIN code to set Windows 10 login password**, click **Add at PIN**.



We then enter the PIN as the numbers entered in this interface.

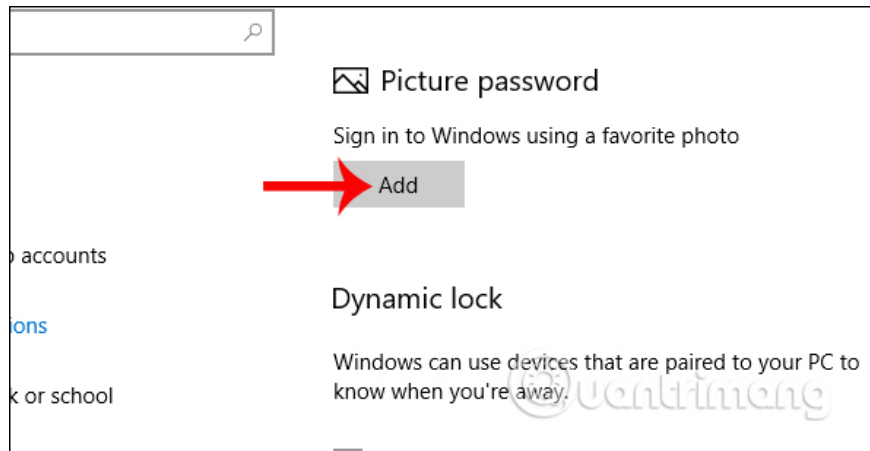


Besides, we can customize the length, short for PIN code or time used for PIN on Windows 10 according to the article below.

1. How to customize the Windows 10 PIN code limit
2. How to activate a self-destruct PIN on Windows 10

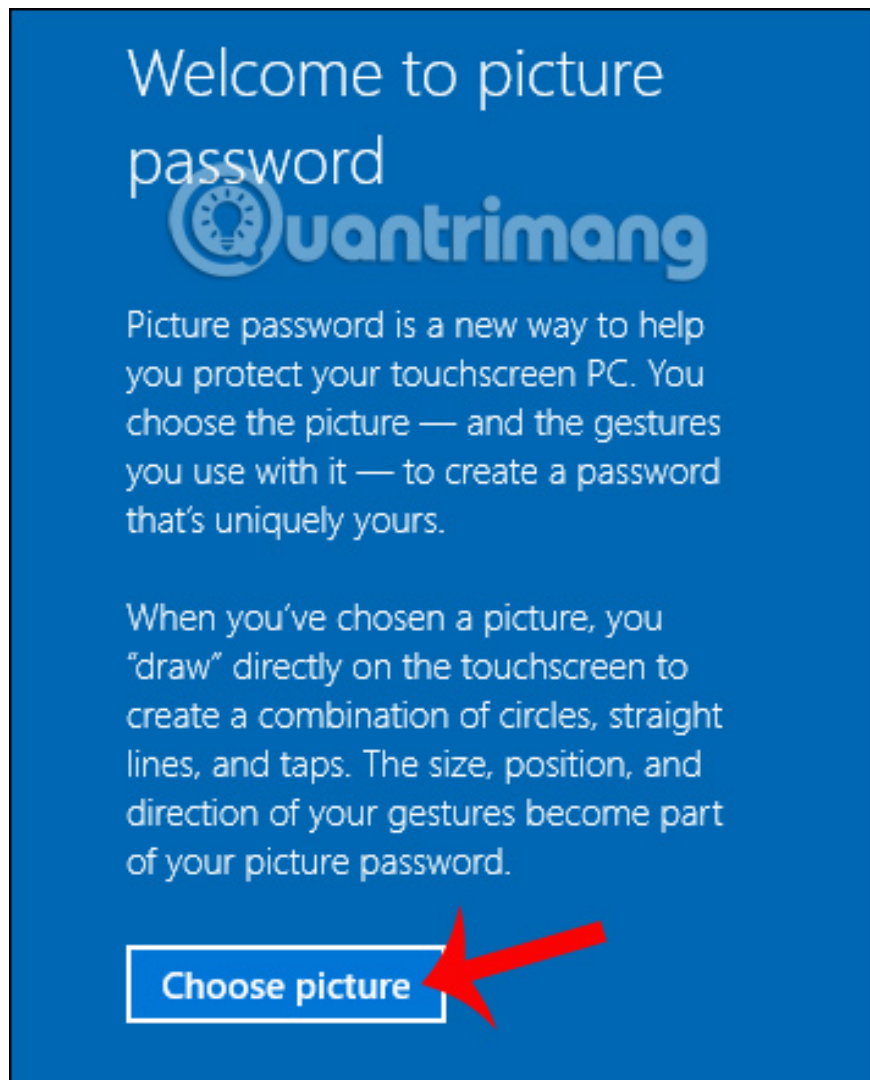
Step 5:

If you want to **set up Windows 10 password by image** , click **Add** in the **Picture Password** section .



Then click **Choose picture** to select the image to make the Windows 10 computer login password. However, this approach is quite complicated because you will need to specify 3 pixels and draw a model to unlock the computer.

So you should choose to create a regular password or use a PIN to create a login pass on Windows 10.



So when you log in, you will need to enter the correct password you created earlier.

Above is how to set a password for Windows 10 computer, in 3 different ways to set a normal password, follow the PIN code and follow the image. However, the simple and effective way that many people choose is to set a normal password and use a PIN code.

I wish you all success!

You finished reading the article "**How to set a password for a Windows 10 computer**" edited by the [TipsMake](#) team. We hope this article has provided you with many useful tech tips and tricks. You can search for similar articles on tips and guides. Thank you for reading and for following us regularly.