

# How to separate hair from the background in Photoshop

How to separate hair from the background in Photoshop. The character's hair is always the part that makes newbie brothers have a headache when they want to separate. Normally, if you only use the Lasso Tool, it is impossible to separate the entire hair with complex small details. There is a very simple way

The character's hair is always the part that makes newbie brothers have a headache when they want to separate. Normally, if you only use the Lasso Tool, it is impossible to separate the entire hair with complex small details.

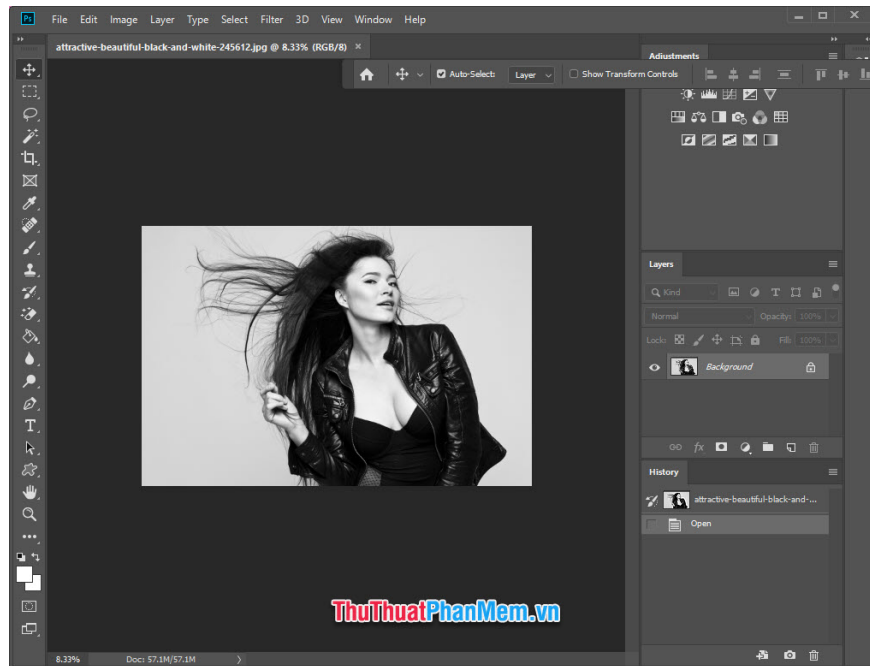


In fact, there is a very simple way to isolate the character and that messy hair from the background using the Channels function.

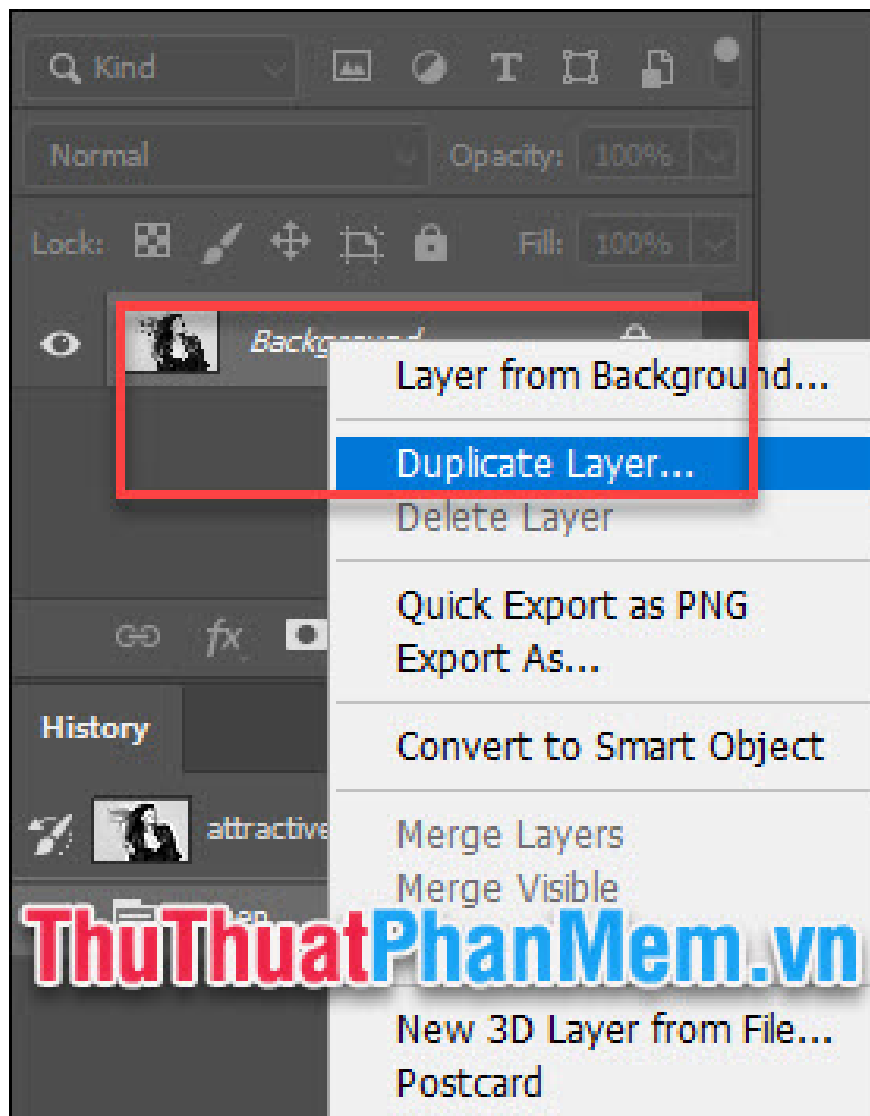
Stay tuned for this article!

## Separate hair from background in Photoshop

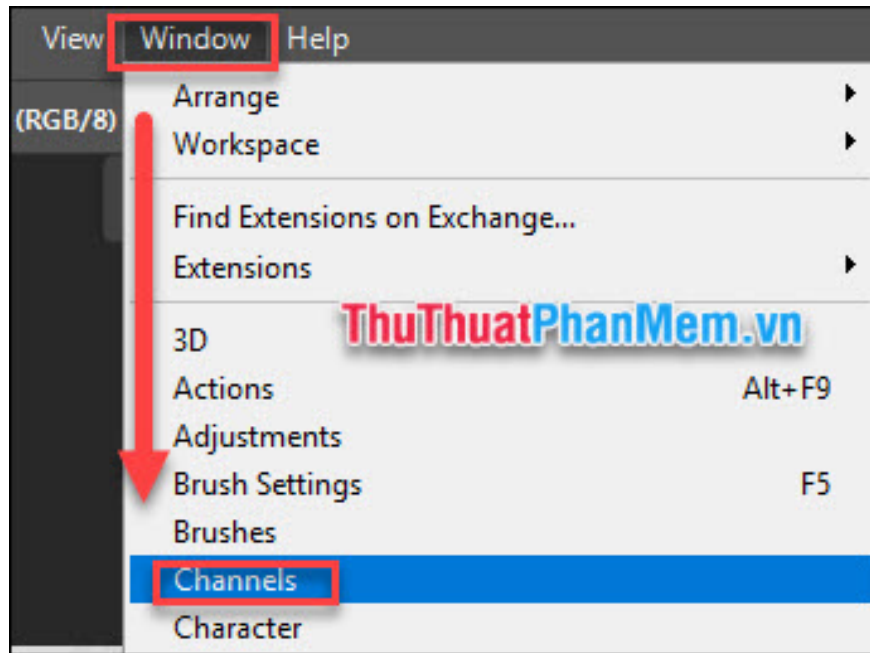
Step 1: Open the image you want to process in Adobe Photoshop.



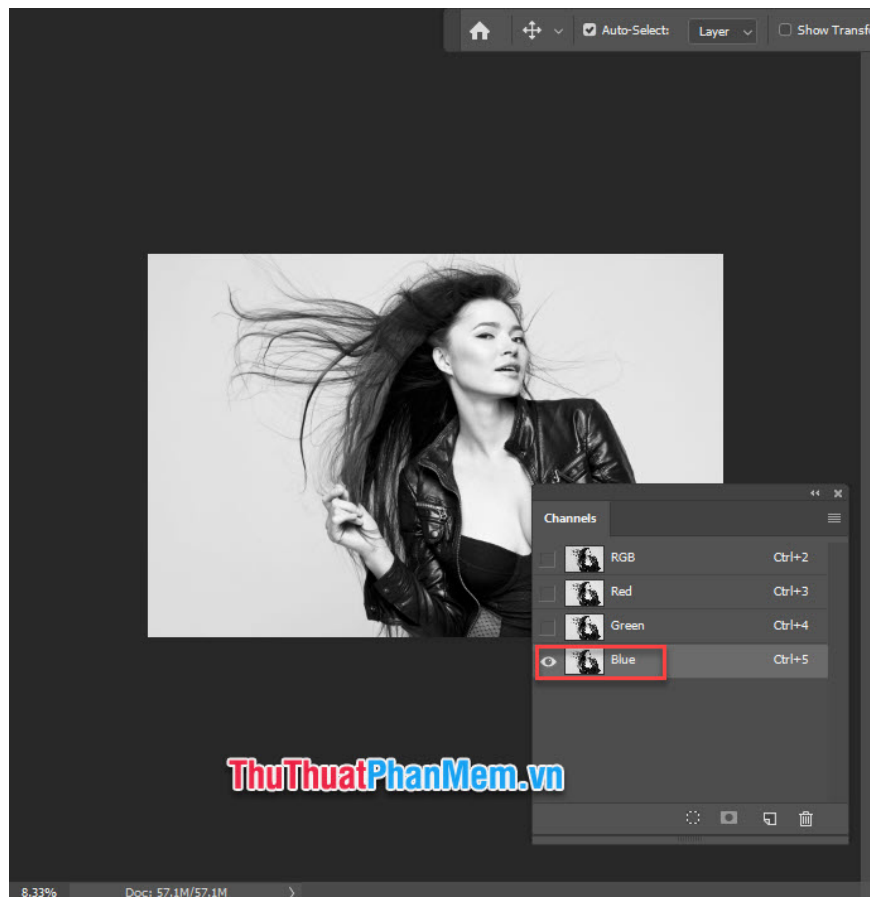
Step 2: Right-click on the image layer, select 'Duplicate Layer .' to create a Layer copy.



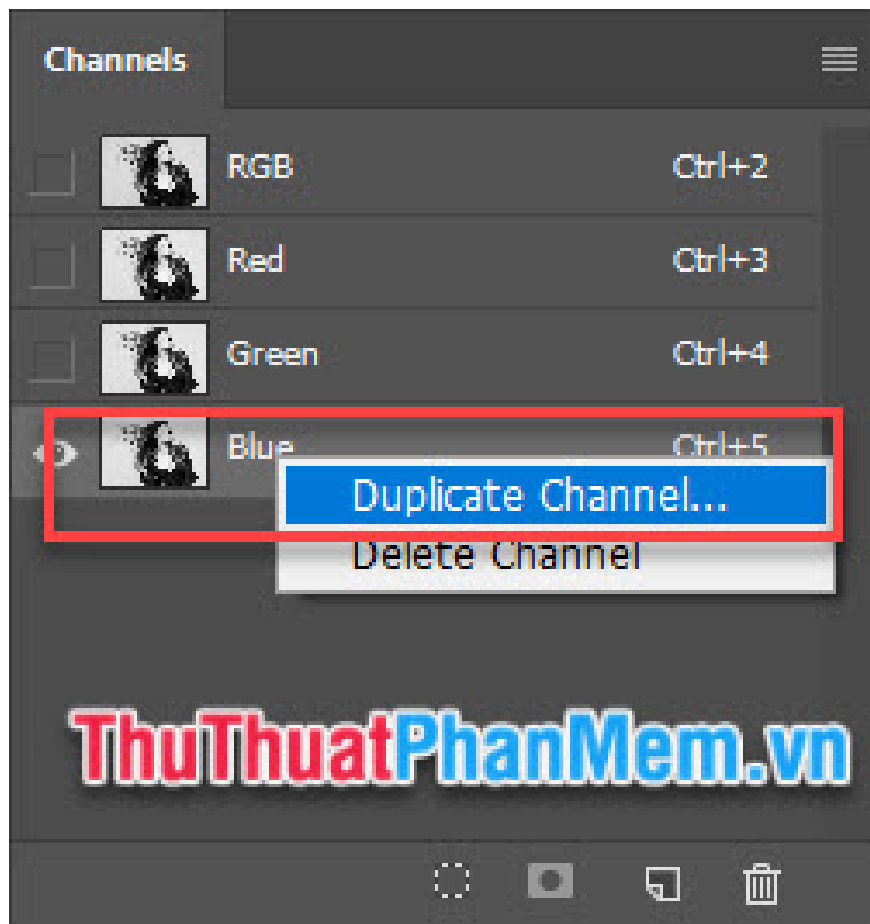
Step 3: Select the Channel function in Windows >> Channels.



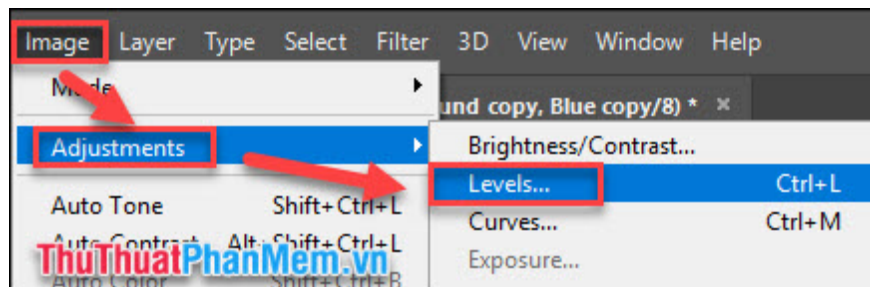
Step 4: In the Channels window, select the channel that shows the most contrast in the image. In this photo, it's Blue.



Step 5: Right-click on the Blue channel, select Duplicate Channel . to make a copy for the channel.



Step 6: In the newly copied Channel, adjust the contrast between the object and the background for greater clarity using the Levels: Image >> Adjustment >> Levels function.

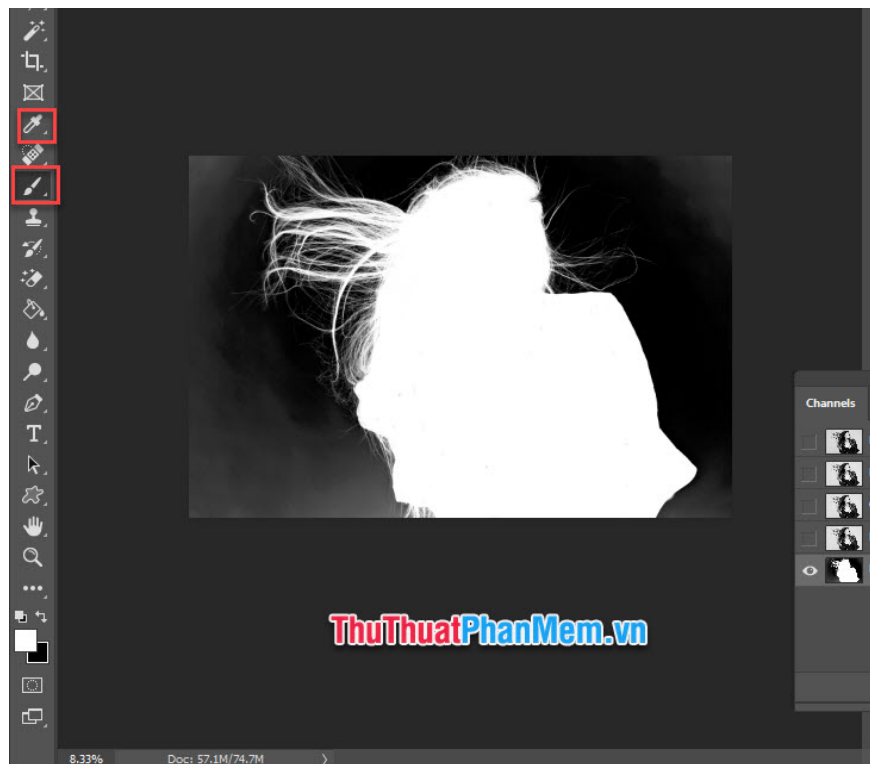


Adjust the contrast so that you see it most clearly (highlight the difference between people and the background).

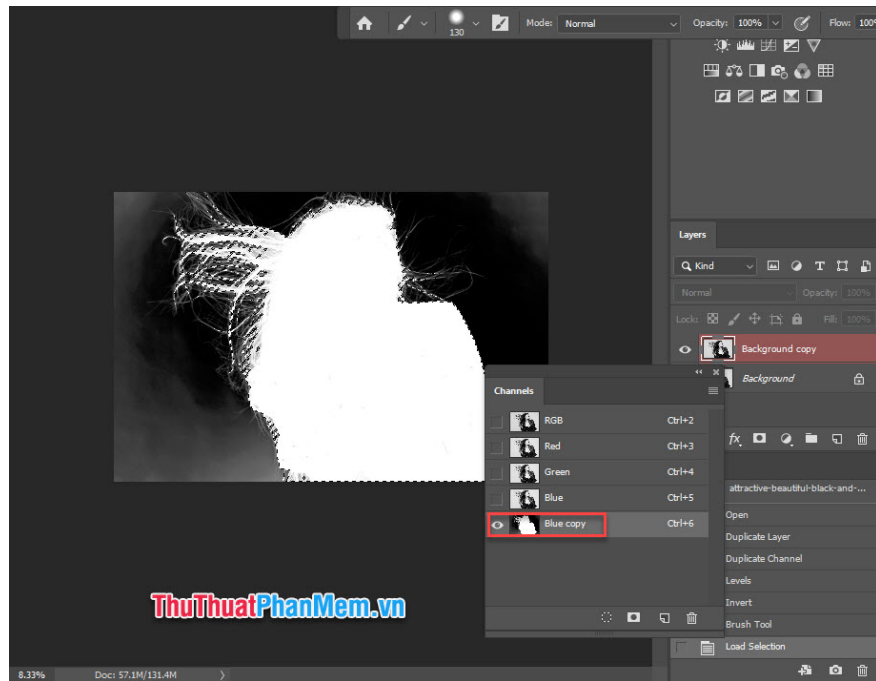
Step 7: Press Ctrl + I to invert the colors.



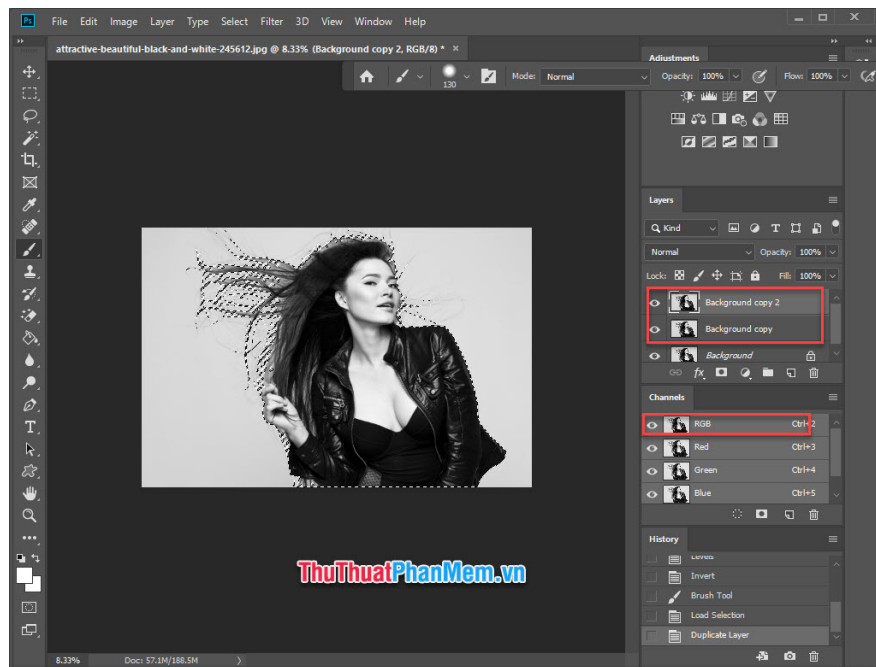
Step 8: Use the Eyedropper tool (I) to copy the white color and the Brush to whiten the whole character.



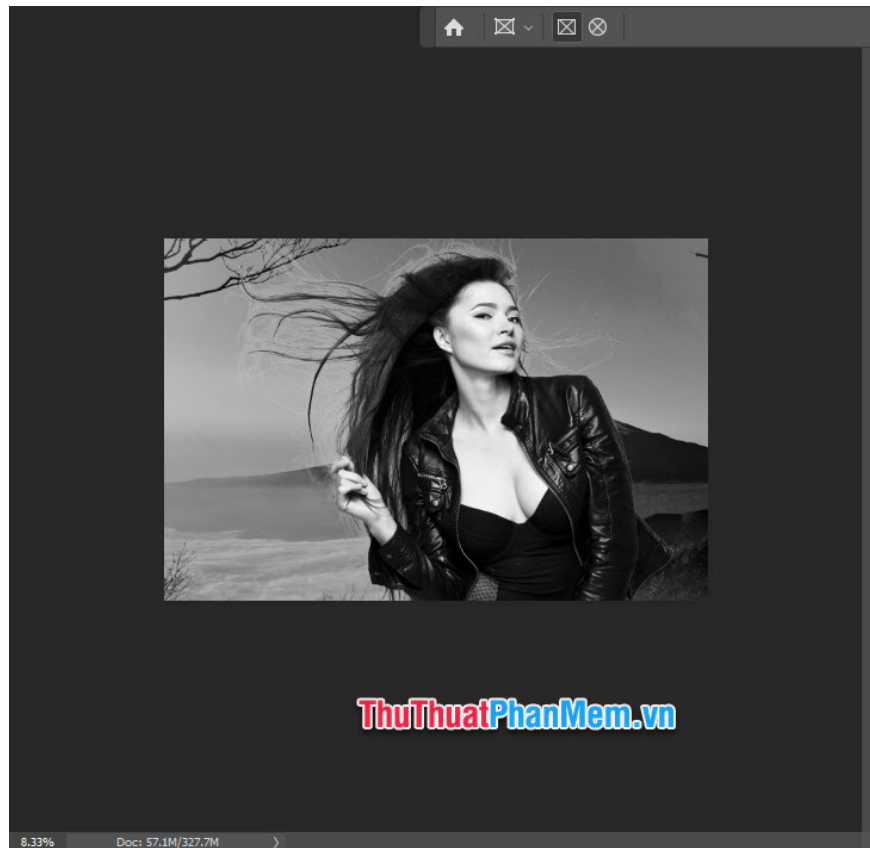
Step 9: Hold Ctrl and click on Channel Blue Copy, all characters will be highlighted.



Step 10: Select again Channel RGB, make a copy of the working layer.



So you've successfully separated the character and hair from the background correctly. Now just add a background image you want.



Thank you for watching the article!

You finished reading the article "**How to separate hair from the background in Photoshop**" edited by the [TipsMake](#) team. We hope this article has provided you with many useful tech tips and tricks. You can search for similar articles on tips and guides. Thank you for reading and for following us regularly.