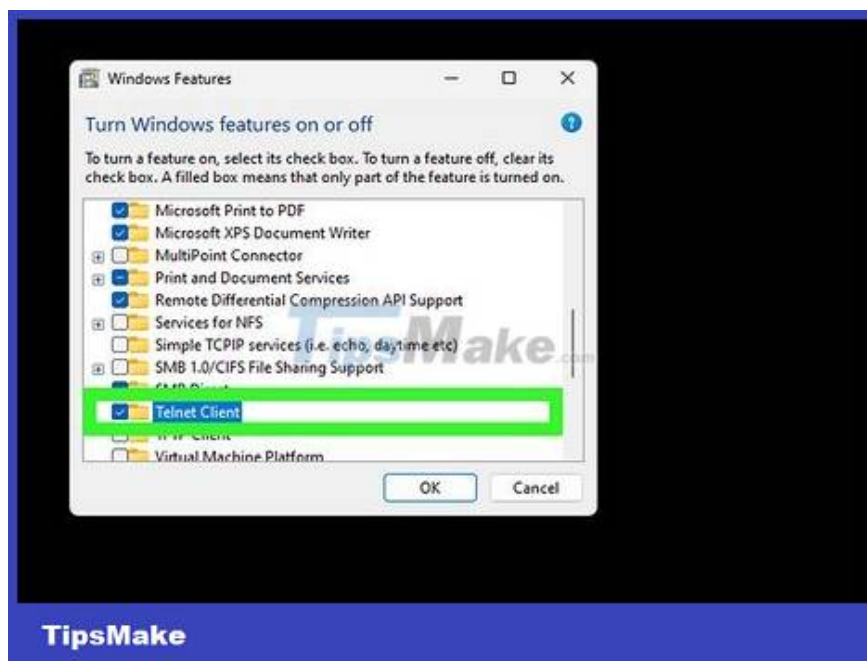


How to Send Email with Telnet

Software like Thunderbird and Outlook make sending emails magical. But who knows, your email may not reach where it needs to go. How do you know what happens after you click the 'Send' button? One way is to try sending emails from the email service provider's external server using telnet - a small application built into the computer. You will receive an error message if the email software does not send the message.

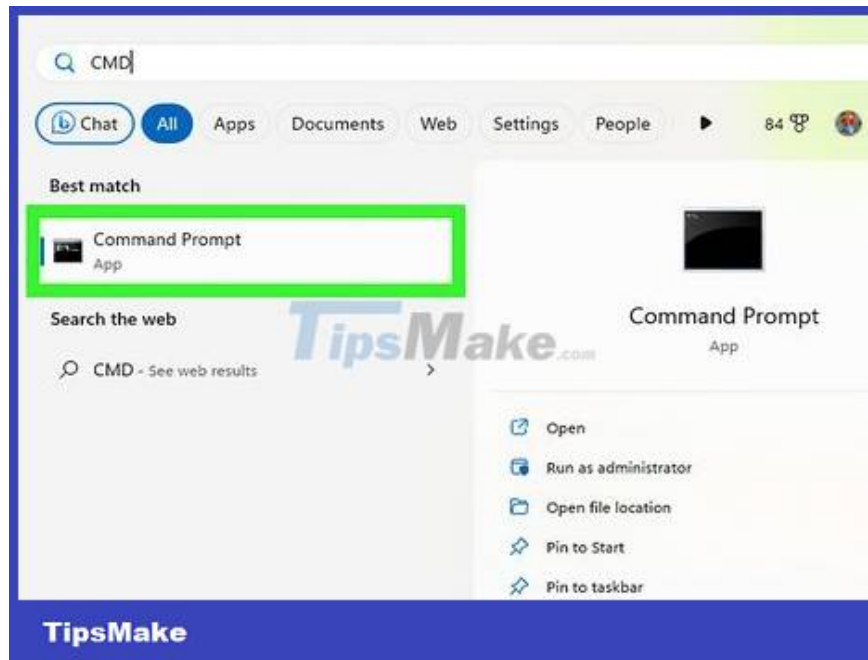
Connect the email server to Telnet



Prepare telnet. If you are using MacOS or Windows XP, the telnet version is ready to use. If it is Windows Vista, Server 2008, 7, 8.1 or 10, you need to enable telnet to use it.

On Windows Vista, Server 2008, 7 and 8.1: Click Start Menu, select Control Panel. Then click Programs and select 'Turn Windows features on or off'. A list of Windows Features will appear. Scroll down to find 'Telnet Client' then check the box next to it. Click 'OK.'

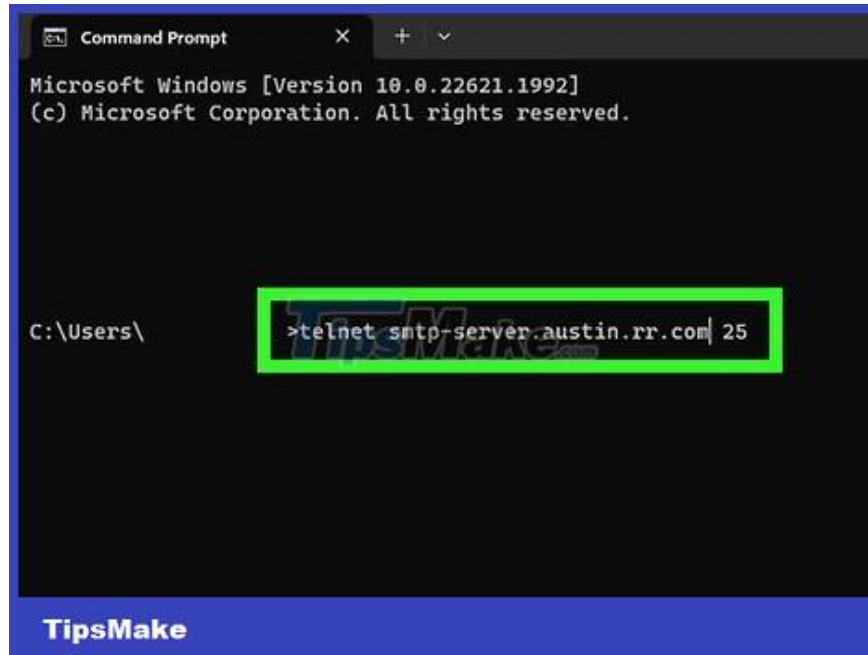
On Windows 10: Right-click the Start Menu and select Programs and Features. Click 'Turn Windows features on or off' in the left menu. In the pop-up list, check the box next to 'Telnet client' and click 'OK.'



Open a terminal window. This process will be different on Windows and Mac.

On all versions of Windows: Press ? Win+ R, type cmd then press ? Enter.

On Mac: In Finder, select 'Applications' then 'Utilities.' Then, double click on the 'Terminal' icon. You can also access Terminal by entering the program name in Launchpad and then clicking the application.



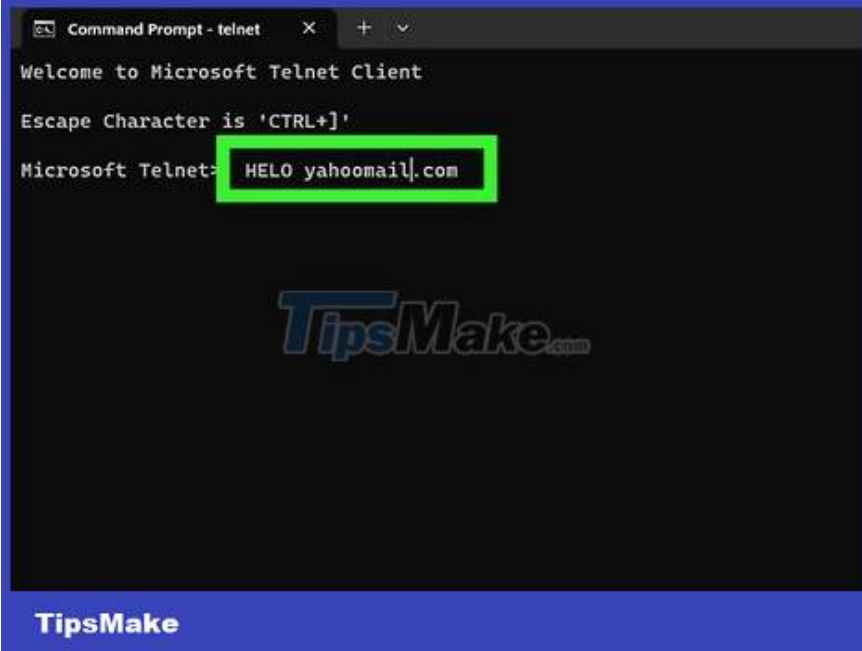
Start a telnet connection. Enter `telnet mail.server.com 25`, where "mail.server.com" is the SMTP (Internet email transfer protocol) server name of your email service provider (such as smtp-server.austin.rr.com) and 25 is the port used by the SMTP service.

You will receive a response saying '220 mail.server.com.'

Port 25 is the port for most mail servers, but some network administrators often switch SMTP to another port such as 465 (secure port) or 587 (for Microsoft Outlook users). Ask your administrator (or check your account information) for the correct port.

If the system reports an error, such as "Cannot connect to host on port 25" but you are confident that port 25 is the correct port, it may be an email server. are having trouble.

Send email



```
Command Prompt - telnet
Welcome to Microsoft Telnet Client
Escape Character is 'CTRL+]'
Microsoft Telnet> HELO yahoo[.]com
```

Hello server. The rest of the process is similar on all operating systems. Enter `HELO yourdomain.com`, where `yourdomain.com` is the domain name you use to send emails. Note that the word `HELO` has only one `L`. Then press `Enter`.

You will receive a response with the content "250 mail.server.com Hello yourdomain.com pleased to meet you."

If there is no response, or you receive an error message, `EHLouse HELO`. Some servers prefer `EHLO`.

```
554 p-impout008.msg.pkvw.co.charter.net cmsmtpl  
C:\Users\  
> mail from: you@gmail|.com
```

Enter the sender information in the 'subject' section. Enter mail from: you@server.com, remember to use your email address. Don't miss the space after mail from:. Press ? Enter.

You'll get a response saying something like '250 Sender OK.'

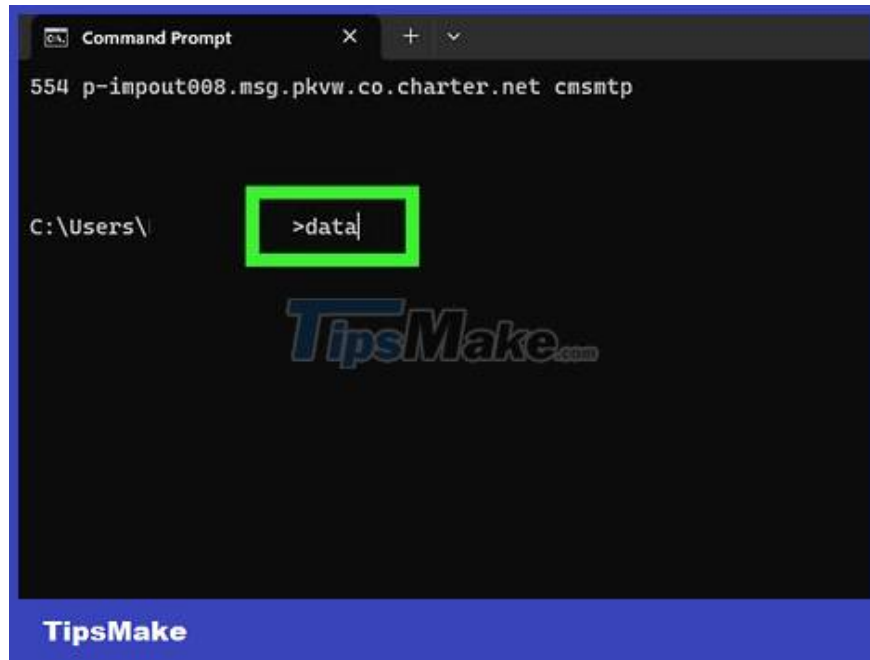
If the machine reports an error, check to see if the email address you are using has the same domain name as the server. For example, the server will not allow you to send emails with the address yahoo.com.

```
554 p-impout008.msg.pkvw.co.charter.net cmsmtpl  
C:\Users\  
>rcpt to: friend@friendsdomain.com|
```

Enter the recipient's email address. Type rcpt to: friend@friendsdomain.comin, remembering to use the actual recipient's email address. Then press ? Enter.

You will receive a notification along the lines above saying "250 OK – MAIL FROM you@yourdomain.com".

If your device reports an error, the email address you're sending the message to may be blocked.



Compose. You need to enter some commands to format and send the email.

Enter data and press ? Enter.

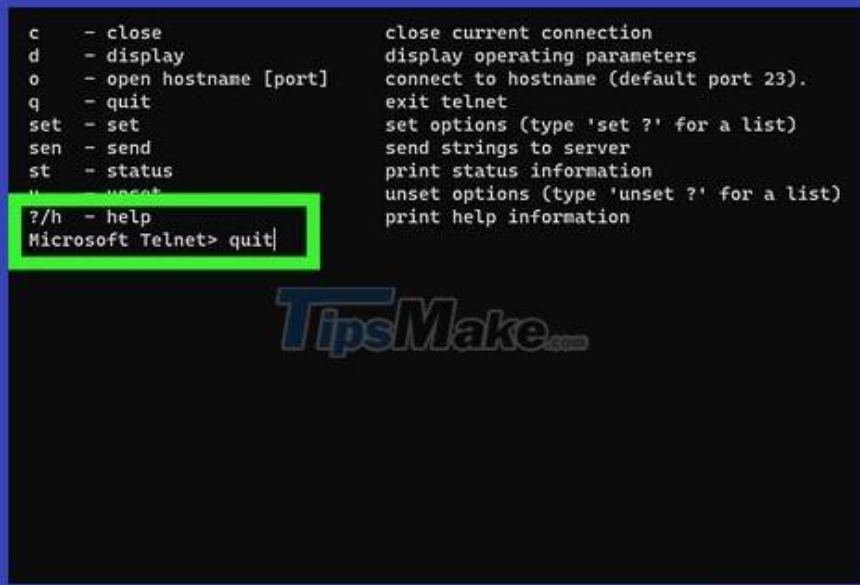
On the next line, type subject: test and press ? Enter twice. Replace 'test' with the theme you want to use.

Compose the message content. Click ? Enter when done.

Type a mark . to end the message, then press ? Enter. You'll see a confirmation message that your email has been accepted or is pending. This message will vary depending on the server.

If you see any error messages, write them down to contact your email service provider.

```
c - close          close current connection
d - display       display operating parameters
o - open hostname [port] connect to hostname (default port 23).
q - quit         exit telnet
set - set        set options (type 'set ?' for a list)
sen - send      send strings to server
st - status     print status information
u - unset      unset options (type 'unset ?' for a list)
?/h - help     print help information
Microsoft Telnet> quit
```



TipsMake

Enter quit to exit telnet. Then press ? Enter.

You finished reading the article "**How to Send Email with Telnet**" edited by the [TipsMake](#) team. We hope this article has provided you with many useful tech tips and tricks. You can search for similar articles on tips and guides. Thank you for reading and for following us regularly.