

How to send commands Ctrl-Alt-Delete in Remote Desktop

How to send commands Ctrl-Alt-Delete in Remote Desktop. Instead of using Ctrl + Alt + Delete in Remote Desktop, Microsoft allows us to use the alternative combination is Ctrl + Alt + End on keyboard with the same function as normal Ctrl + Alt + Delete.

Ctrl + Alt + Delete is a combination of "divine" shortcut keys that help us get rid of application crash status quickly. But what if we use this combination on the Remote Desktop? Invite you to read along to follow the instructions below.

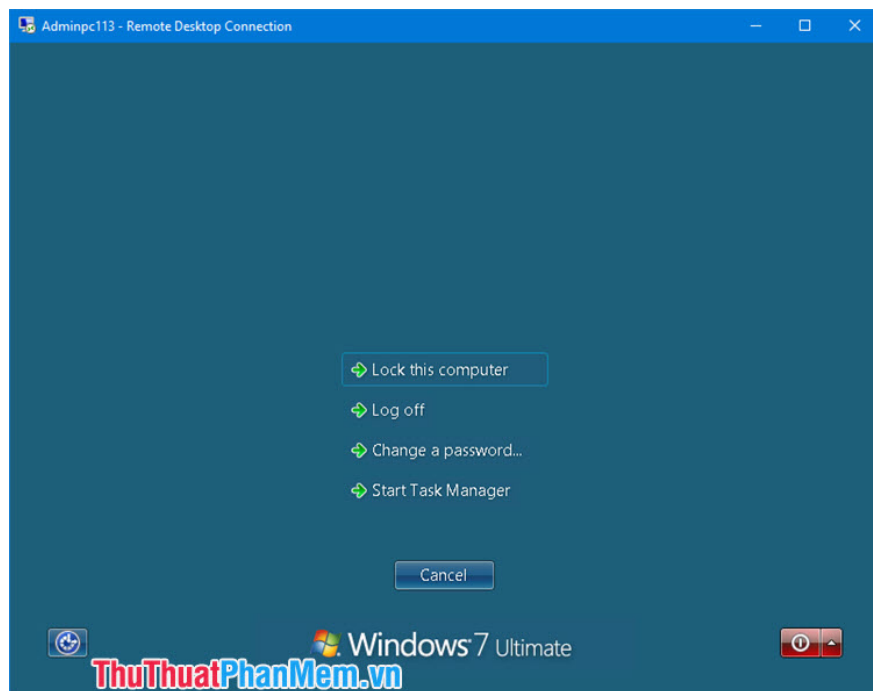


1. Send commands in Remote Desktop with Ctrl + Alt + End

Instead of using **Ctrl + Alt + Delete** in Remote Desktop, Microsoft allows us to use the alternative combination is **Ctrl + Alt + End** on keyboard with the same function as normal **Ctrl + Alt + Delete** .



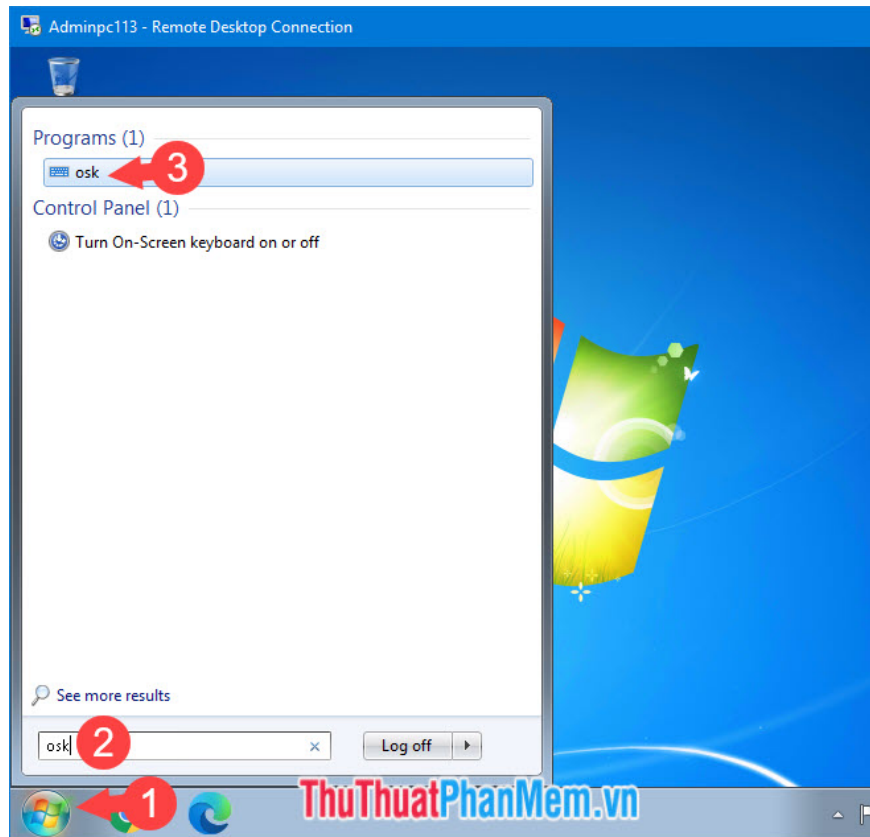
And after using **Ctrl + Alt + End** , the multi-function management screen is shown as shown below. You can operate such as opening Task manager, shutdown, changing accounts .



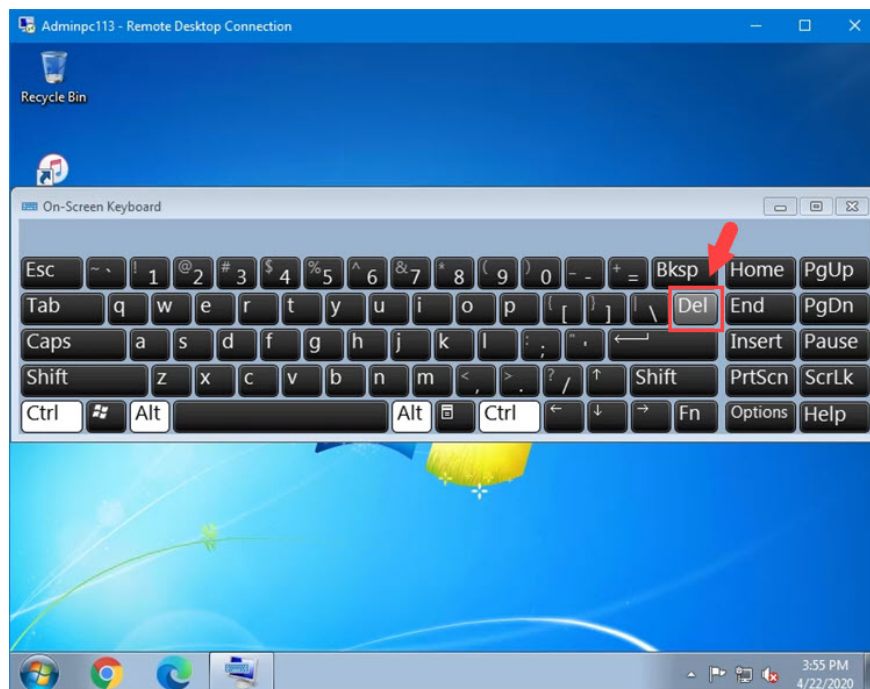
2. Send command **Ctrl + Alt + Delete** via virtual keyboard.

A very interesting way to send **Ctrl + Alt + Delete** commands to the Remote Desktop is to use the virtual keyboard (On-screen keyboard). Proceed as follows:

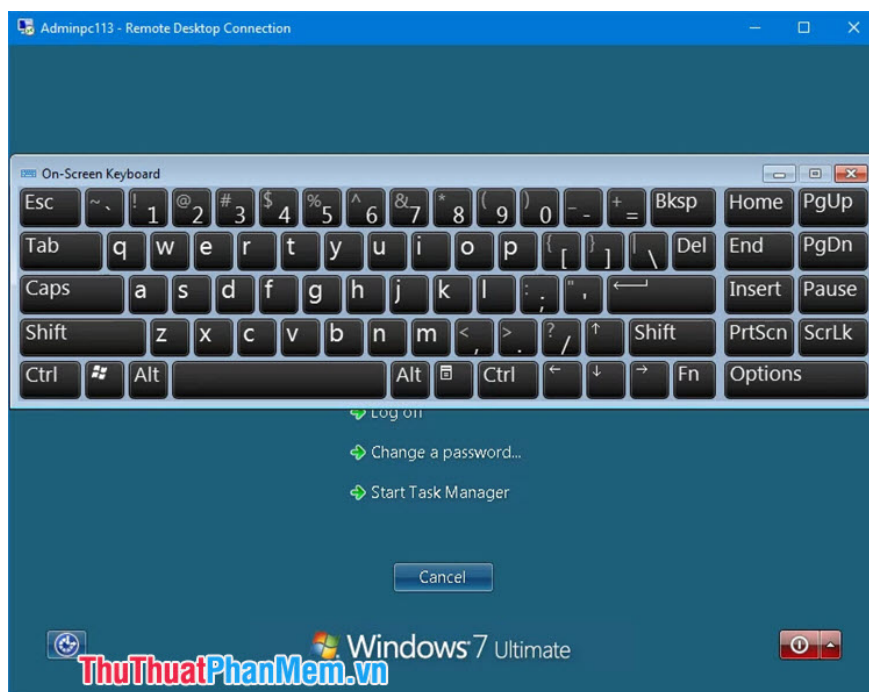
Step 1: Go to **Start** (1) => search with the keyword **osk** (2) => click on the **osk** application (3) . For Windows 10, press the **Windows + S** keyboard shortcut to open the search tool and select the **On-Screen Keyboard** application .



Step 2: You press the key combination **Ctrl + Alt** above your real keyboard. You keep the same combination and click on the **Del** key in the virtual keyboard. So we have successfully created the key combination **Ctrl + Alt + Del** in Remote Desktop.



After doing the above, the " *Ctrl + Alt + Delete* " screen will display as usual. Once done, you can exit the virtual key to manipulate other functions more easily.



After reading this article, you see sending **commands *Ctrl + Alt + Delete*** in Remote Desktop is simple and easy right? Good luck!

You finished reading the article "**How to send commands *Ctrl-Alt-Delete* in Remote Desktop**" edited by the [TipsMake](#) team. We hope this article has provided you with many useful tech tips and tricks. You can search for similar articles on tips and guides. Thank you for reading and for following us regularly.