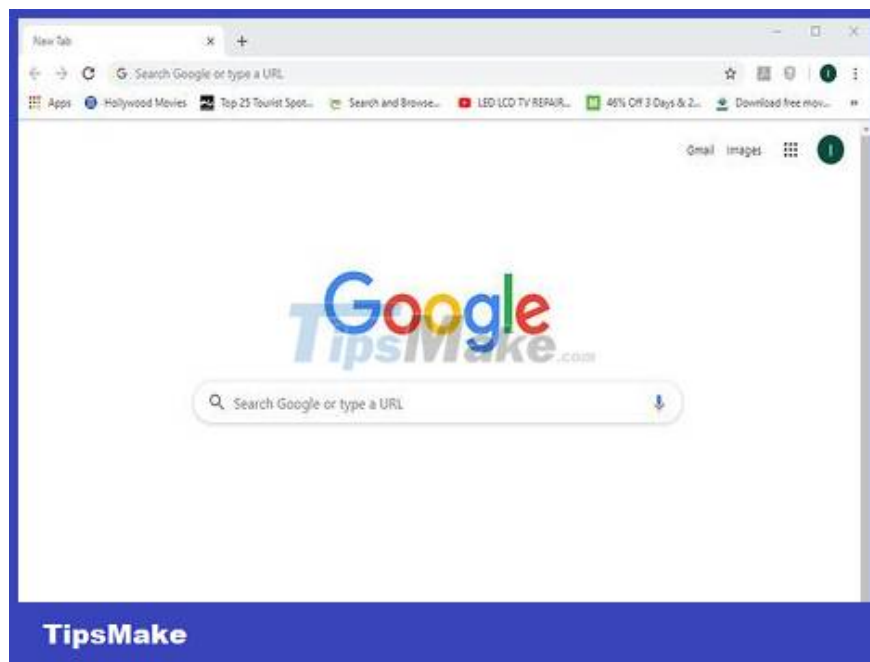


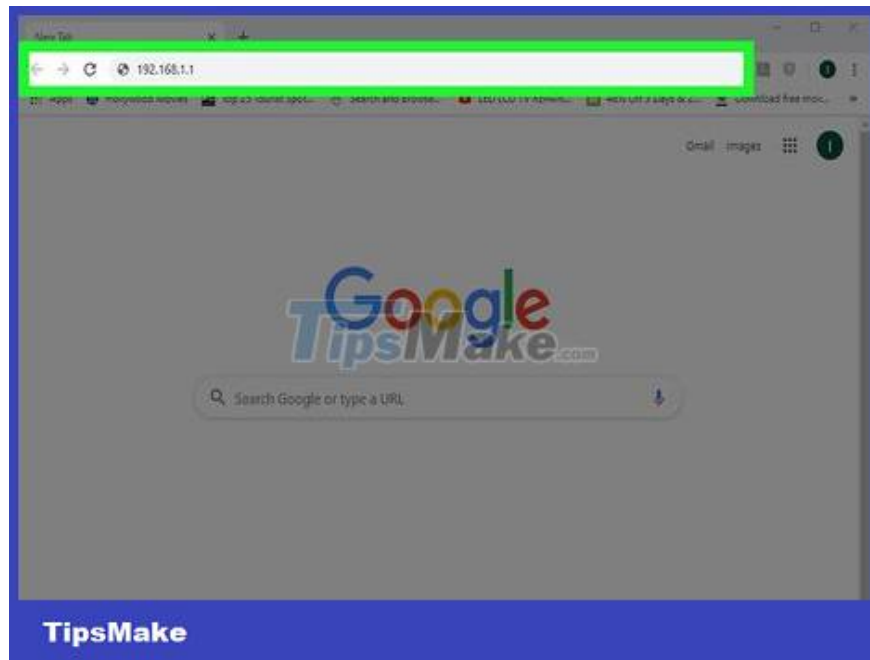
# How to See Who's Connected to Your Wi Fi

Do you suspect someone has accessed your Wi-Fi? If you want to know which devices are connecting to your Wi-Fi, you've come to the right place. There are many ways to help you find information! This article will guide you to check who has connected to your Wi-Fi.

## Use a wireless router



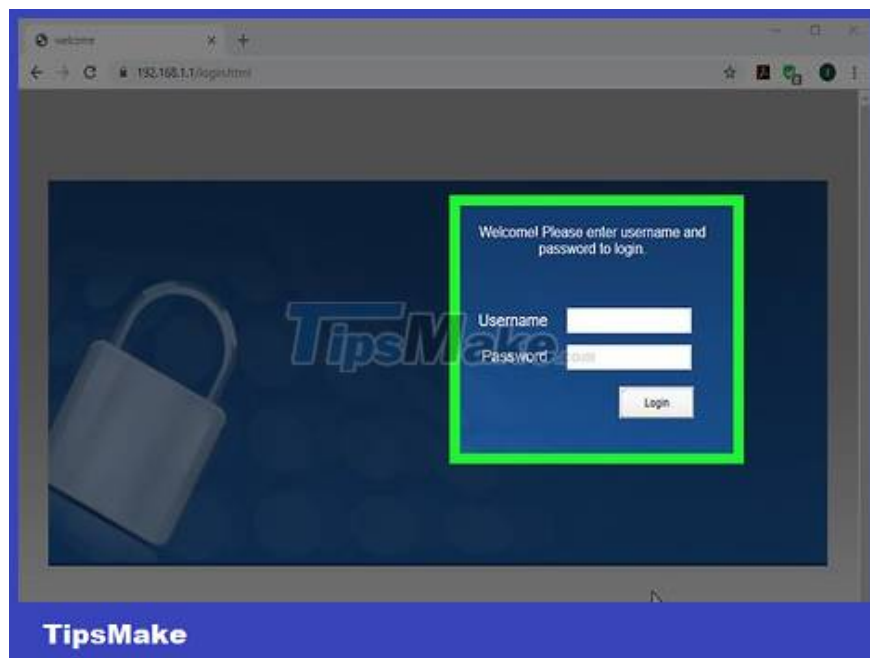
**Open browser.** You can use your browser to log in to the web interface for your wireless router. This is the place that allows you to perform settings and changes to the wireless network configuration and check who is connected to the wireless router.



**Enter the router's IP address in the address bar.** This takes you to the web interface for the wireless router. The IP address of the wireless router will vary depending on the manufacturer and product line. Refer to the user manual or the manufacturer's website to find the IP address specific to your wireless router.

The router's IP address is usually **192.168.1.1** and **10.0.0.1** .

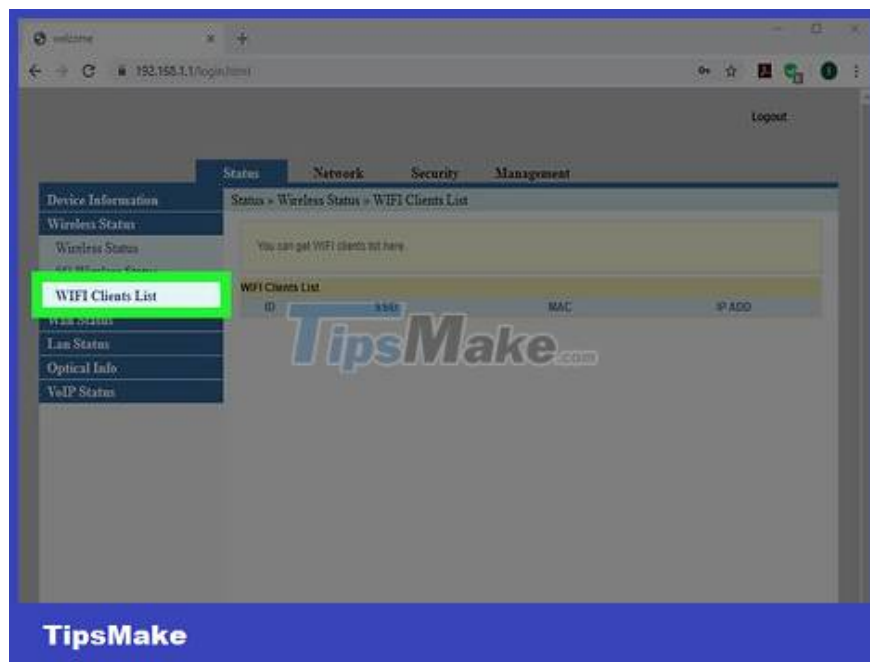
You can find the router's IP address using Command Prompt on Windows. Open the Start menu and enter CMD to see the Command Prompt option. Click the program name to open it. Enter `ipconfig /all` and press `?` Enter. Find the IP address displayed to the right of "Default Gateway".



**Enter username and password.** If you haven't changed your username and password, enter the default information. This information will vary depending on the manufacturer and router model. Refer to the user

manual or the manufacturer's website to find the default username and password for your router.

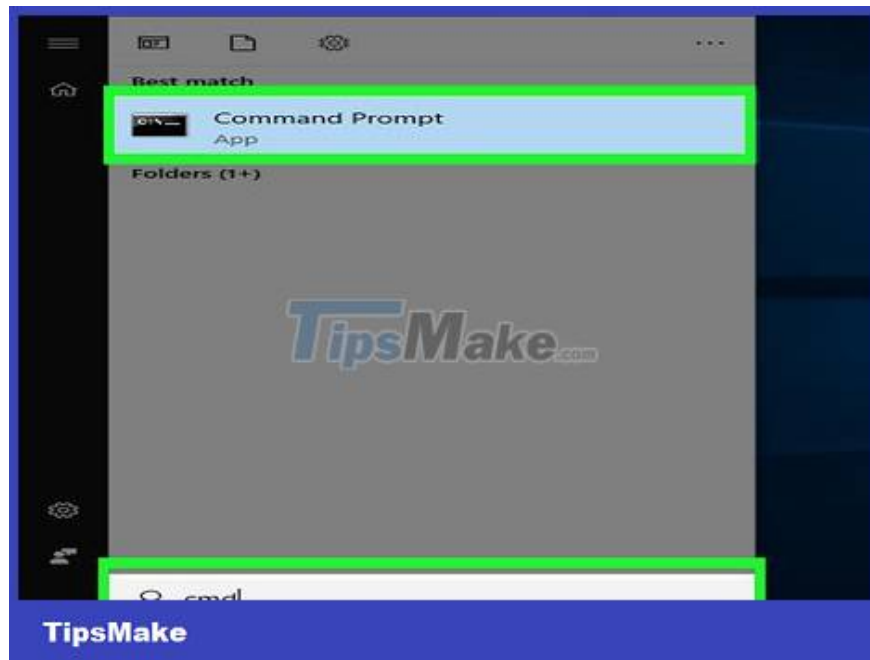
Common usernames and passwords are usually "admin" and "password".



**Find the device list.** You can find a list of connected devices on the router's web interface. The information displayed here will vary depending on the manufacturer and router model. You may see the option "Connected devices" or "Attached devices" or something similar. This is a list that displays the device name and MAC address of each connected device.

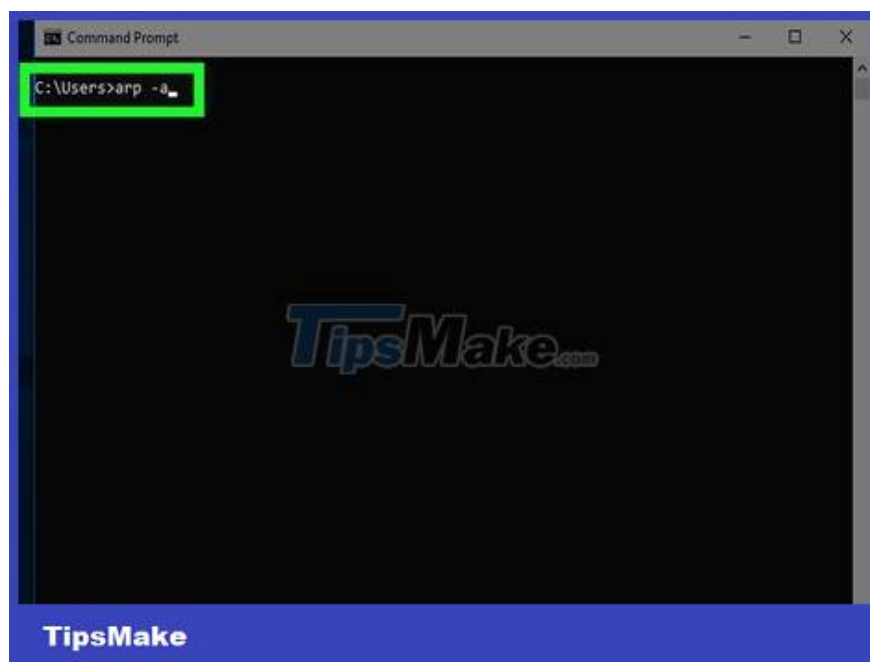
If you see a strange device, change your Wi-Fi password. Don't forget to use WPA2-PSK encryption if available. This is an operation that requires all connected devices to re-enter the new password to continue connecting.

## Use Command Prompt



**Open Command Prompt.** This is a program found on Windows 8 or later operating systems by pressing the Windows key and typing "CMD".

On Mac, you can do the operation in the terminal. Click on the magnifying glass icon in the top right corner and type `terminal` in the search bar and click on terminal.



Type "`arp -a`" into the window.

```
C:\Users>arp -a

Interface: 192.168.1.11 --- 0x9
Internet Address      Physical Address      Type
192.168.1.1          cc-06-77-b5-07-60    dynamic
192.168.1.255        ff-ff-ff-ff-ff-ff    static
224.0.0.22           01-00-5e-00-00-16    static
224.0.0.251          01-00-5e-00-00-fb    static
224.0.0.252          01-00-5e-00-00-fc    static
239.255.255.250      01-00-5e-7f-ff-fa    static
255.255.255.255      ff-ff-ff-ff-ff-ff    static

Interface: 192.168.56.1 --- 0xf
Internet Address      Physical Address      Type
192.168.56.255       ff-ff-ff-ff-ff-ff    static
224.0.0.22           01-00-5e-00-00-16    static
224.0.0.251          01-00-5e-00-00-fb    static
224.0.0.252          01-00-5e-00-00-fc    static
239.255.255.250      01-00-5e-7f-ff-fa    static
255.255.255.255      ff-ff-ff-ff-ff-ff    static

C:\Users>
```

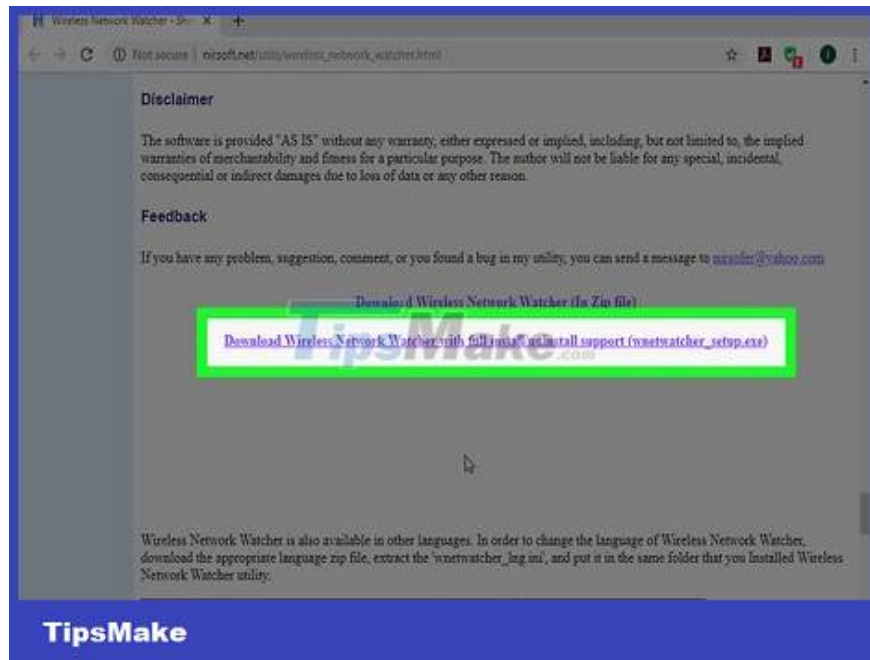
**View IP address.** This IP address usually has the same prefix as the router's IP address (such as 192.168) that is connected to the router. You will see the IP address and MAC address of each connected device.

Each device connected to the internet has a unique MAC address. You can usually find your device's MAC address in the Settings menu under Network or Internet Settings or in the device information section. You will easily find the MAC address of Windows, Mac, iPhone, Samsung Galaxy computers.

## Using Wireless Network Watcher (Windows only)



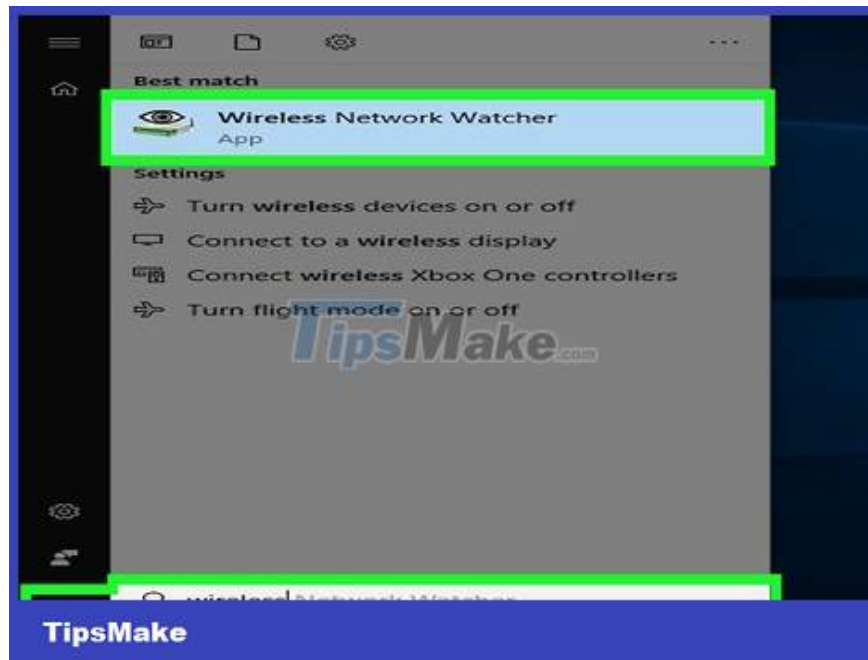
Visit [http://www.nirsoft.net/utills/wireless\\_network\\_watcher.html](http://www.nirsoft.net/utills/wireless_network_watcher.html) using a web browser. You can use any browser.



**Scroll down and click Download Wireless Network Watcher with full install (Download the full installation version of Wireless Network Watcher).** It's the second link below the "Feedback" section of the page.

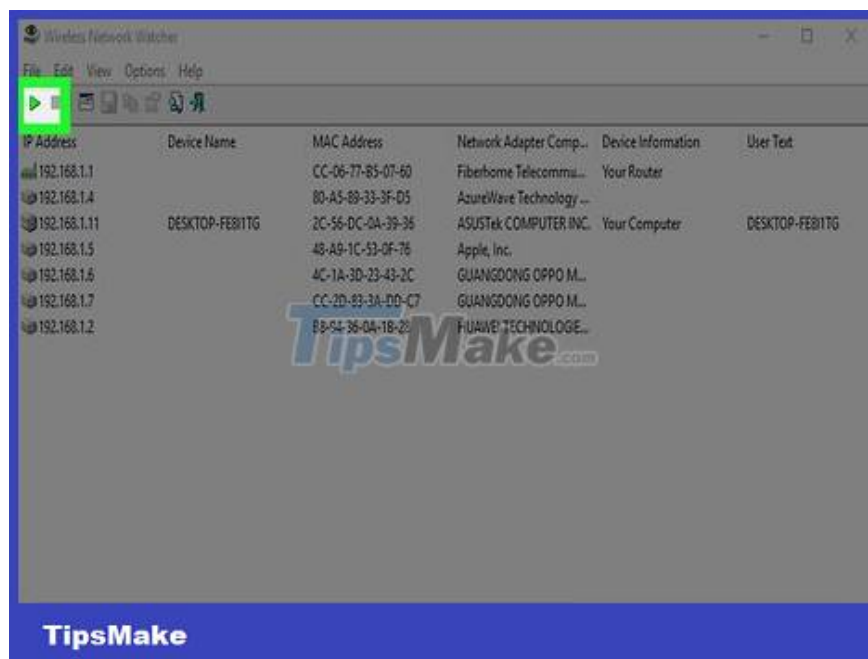


**Click on the installation file and follow the instructions.** By default, downloaded files are found in the Downloads folder. Click on the file named "wnetwatcher\_setup.exe". This opens the Wireless Network Watcher installation program. Follow the on-screen instructions to complete the installation. The Wireless Network Watcher program opens immediately when the installation process is complete.



**Open Wireless Network Watcher.** It's the program with the eyeball icon on the wireless router. To find the program, simply click the Windows Start menu and type Wireless Network Watcher. Click the program's icon to open it. The Wireless Network Watcher program will automatically scan the network and display a list of connected devices after startup.

Use the "Device Name" column to see the name of each device connected to the network and router.



**Click the triangular 'Play' icon.** This is the option in the upper left corner of the Wireless Network Watcher program. This will rescan the network and display a list of connected devices.

You finished reading the article "**How to See Who's Connected to Your Wi Fi**" edited by the [TipsMake](#) team. We hope this article has provided you with many useful tech tips and tricks. You can search for similar articles on tips and guides. Thank you for reading and for following us regularly.

