

# How to schedule your computer to shut down automatically without software.

Scheduling a computer shutdown is a popular trick that allows you to automatically turn off your computer after installing an application or downloading a software program, saving you from waiting too long. This article from TipsMake will guide you on how to schedule a computer shutdown quickly and effectively without using any software.

There are many ways to schedule your computer to shut down, including scheduling shutdowns without software or with software. Not using software gives you more control if there isn't any automatic shutdown software available ; however, using automatic shutdown software allows for more customization and ease of use.



**Now I can shut down my computer without any software.**

But whether you're scheduling your computer to shut down without software or using software, this article from TipsMake will provide you with the most complete and detailed instructions so you can choose the most convenient and appropriate method depending on the situation.

## Table of Contents:

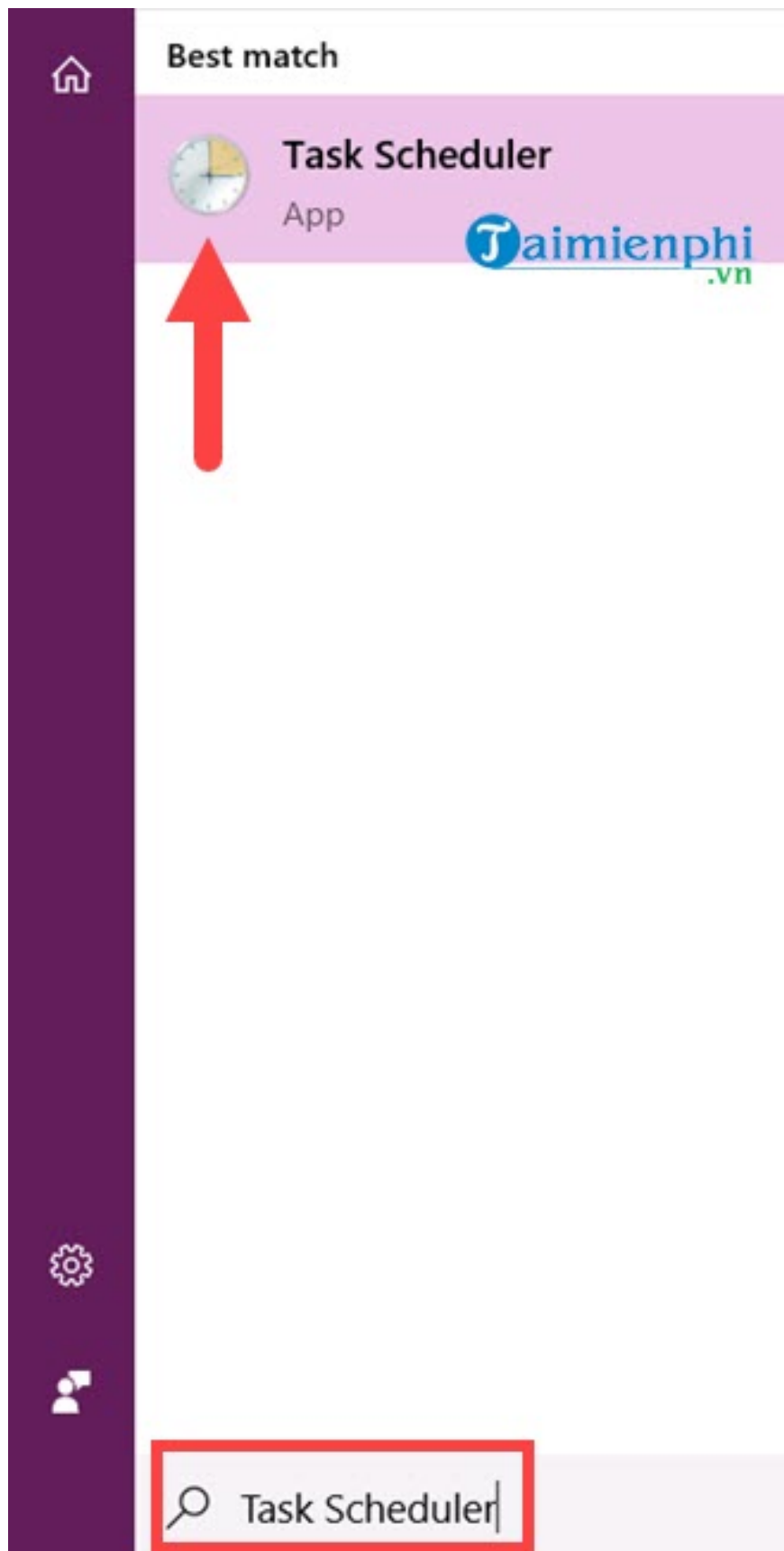
1. Scheduling a computer shutdown using Task Scheduler .
2. How to schedule a computer/laptop shutdown .
3. How to schedule a shutdown with Counter Timer .
4. Using IDM software to schedule a computer shutdown .

# **A guide to the simplest and most effective ways to schedule your computer to shut down.**

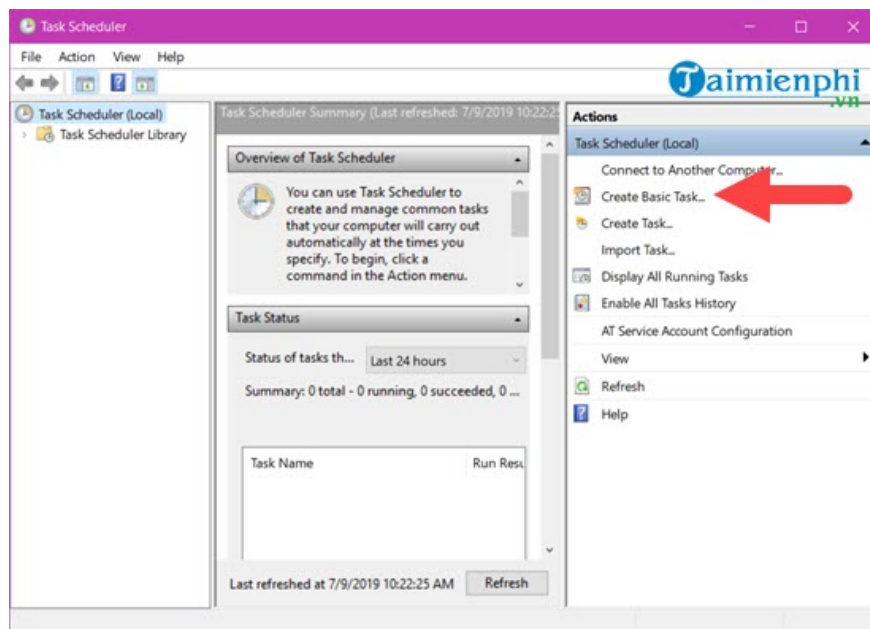
## *1. Schedule your computer to shut down using Task Scheduler.*

**Task Scheduler** is a tool that allows you to schedule a software program, a program, or a piece of code on your Windows system to shut down. Task Scheduler isn't as well-known because it's a bit more complex to use. However, scheduling a shutdown with Task Scheduler is actually quite simple, and you can consider this a basic lesson if you want to explore the world of Task Scheduler.

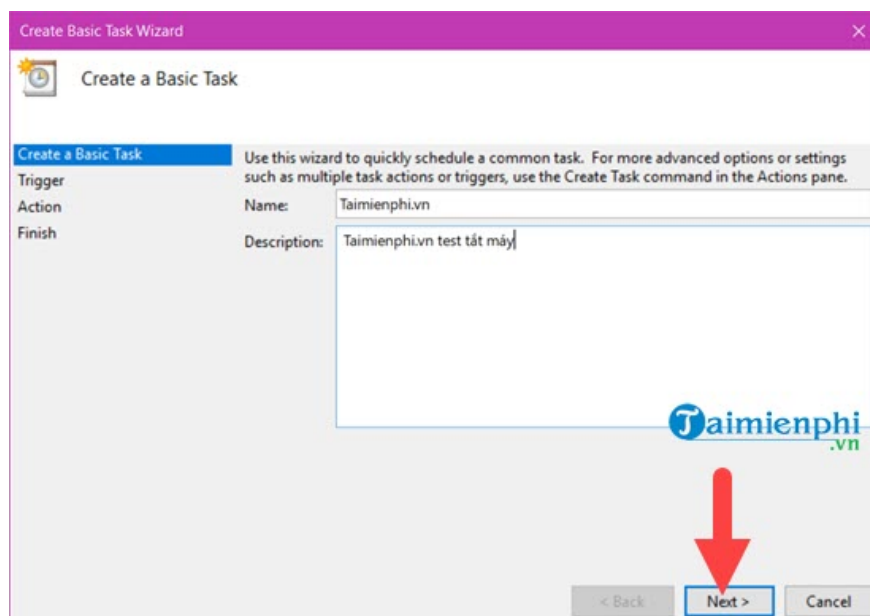
**Step 1:** To activate **Task Scheduler** on your computer, first open **the Start Menu** , then type Task Scheduler and click on the displayed result.



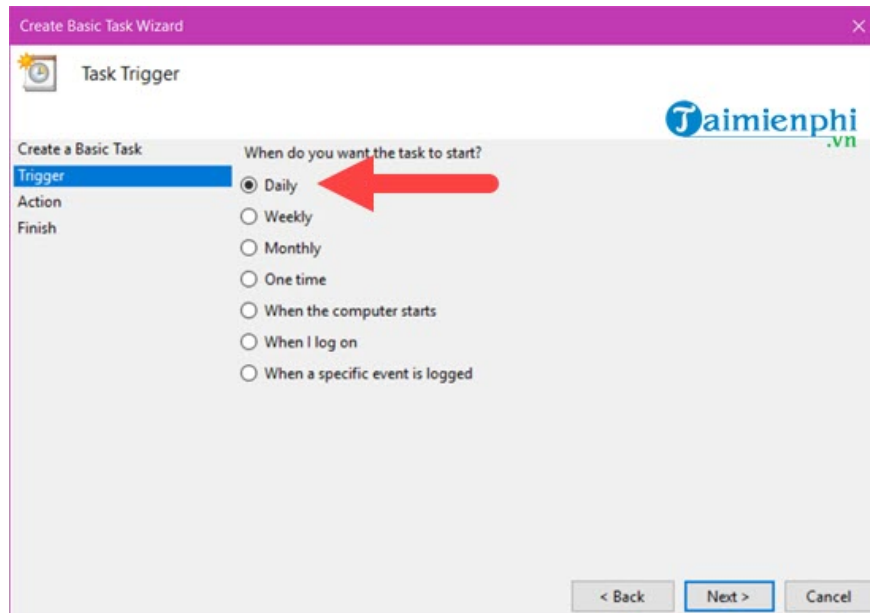
**Step 2:** On the Task Scheduler interface, simply look to the right; you'll see a row of functions. Click on **"Create basic Task"** to create a new scheduled session.



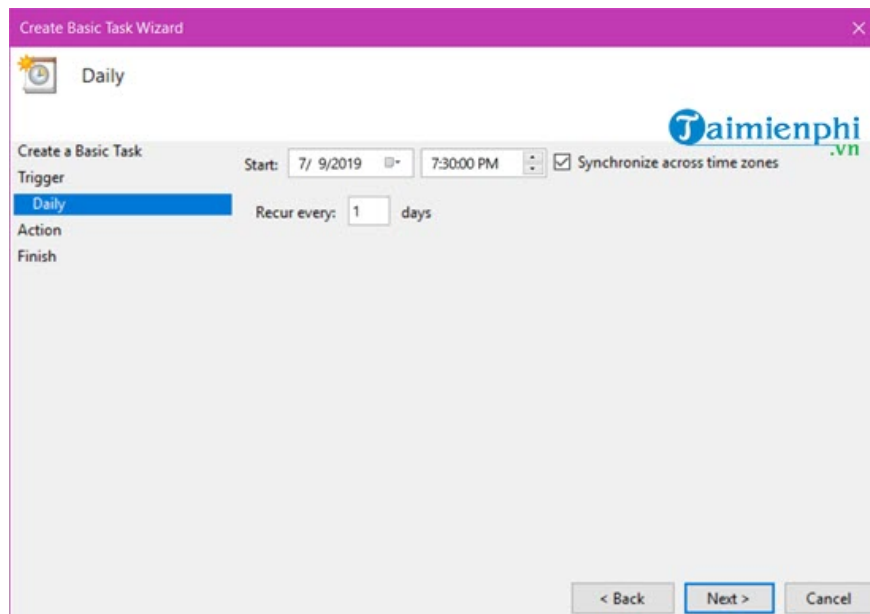
**Step 3:** Name this **new Task** and describe its purpose, then select **Next** to continue.



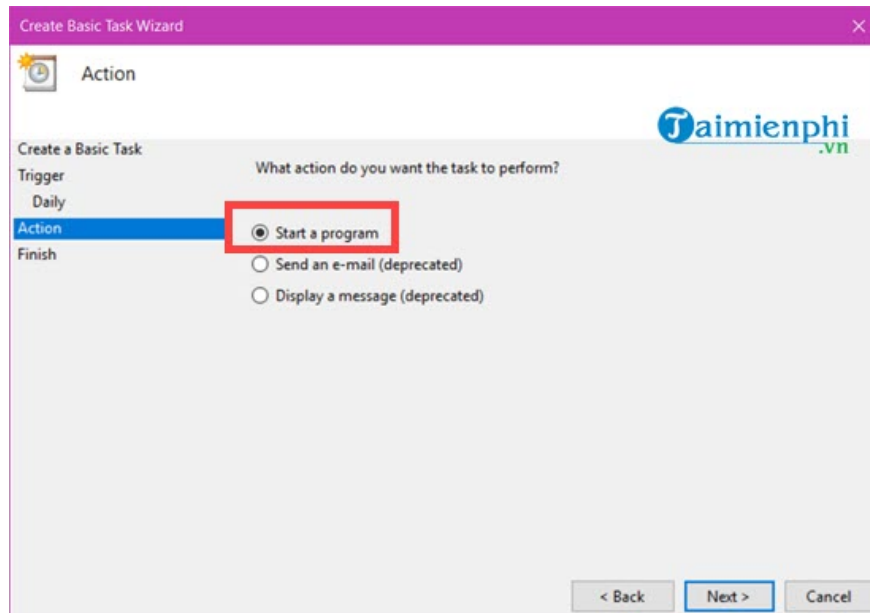
**Step 4:** In the next step, Task Scheduler will ask you how you want this task to run, whether it's daily, weekly, monthly, once a week, or several other options.



**Step 5:** The next step is to choose the start time for the Task, which in this article is the time to shut down the computer. TipsMake chooses **7:30 PM** and then selects Next.



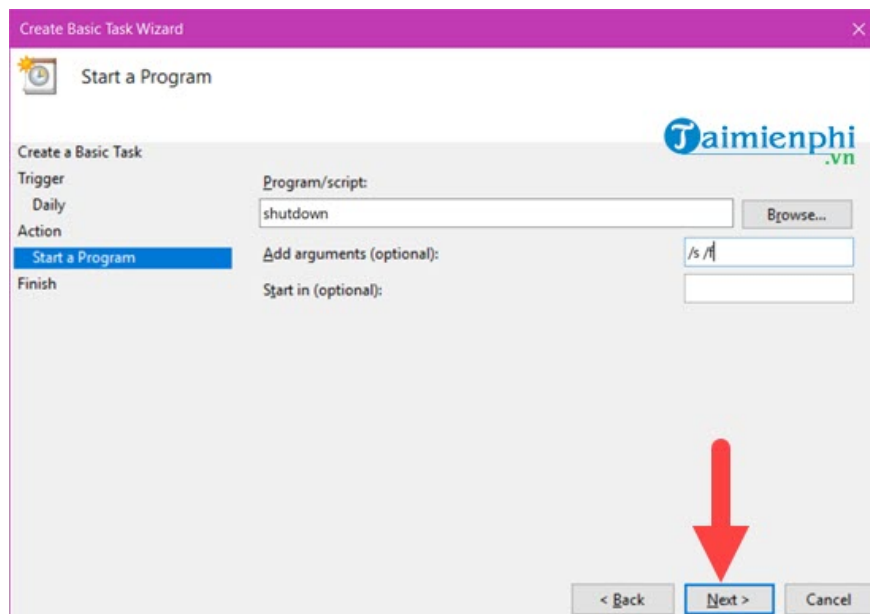
**Step 6:** Task Scheduler will ask you how you want to run this new task. To run it, you must select " **Start a program**" and then select "Next" .



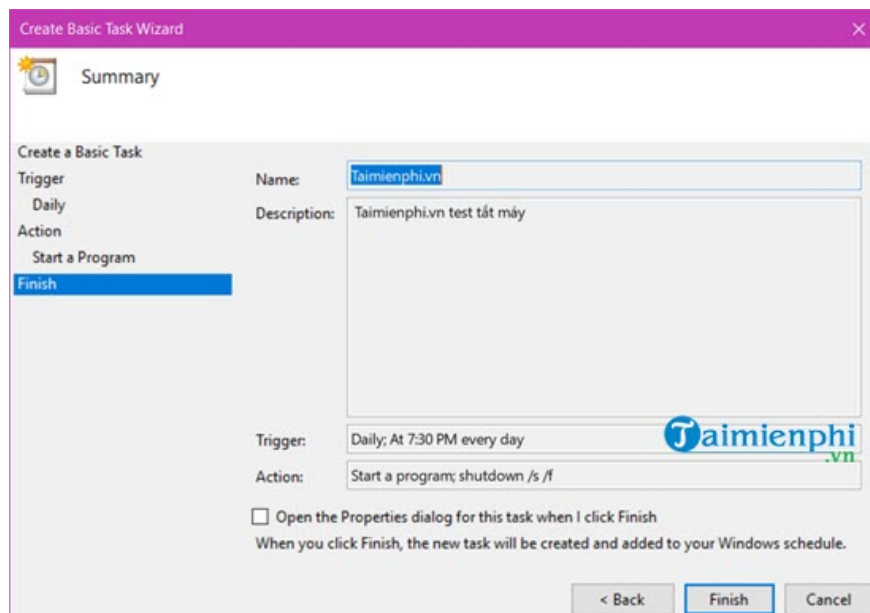
**Step 7:** In the Start a Program section, simply fill in the following information accurately:

- **Program/script** : shutdown.
- **Add arguments (optional)** : /s /f.
- **Start in (optional)** : Leave blank.

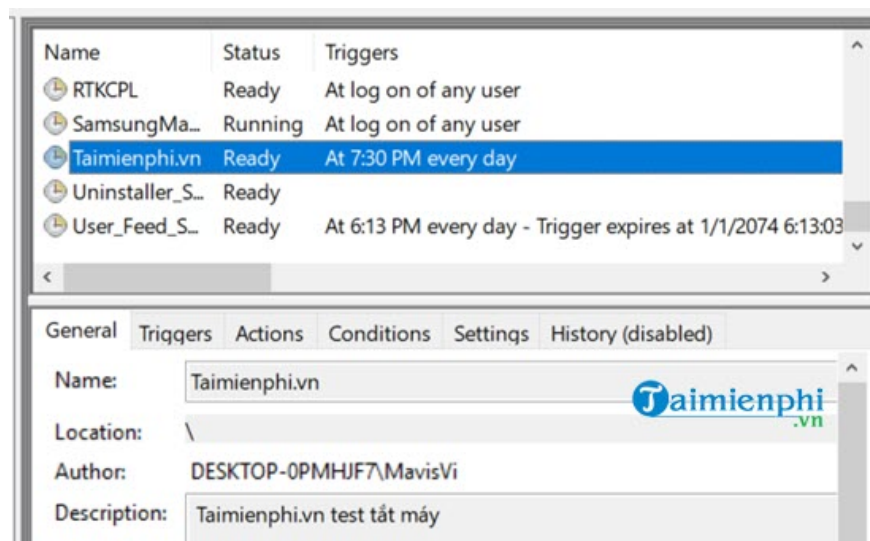
Then click Next to finish scheduling the computer shutdown.



**Step 8:** Finally, double-check all the information to ensure accuracy before completing the new task creation process by clicking **Finish** to shut down your computer.



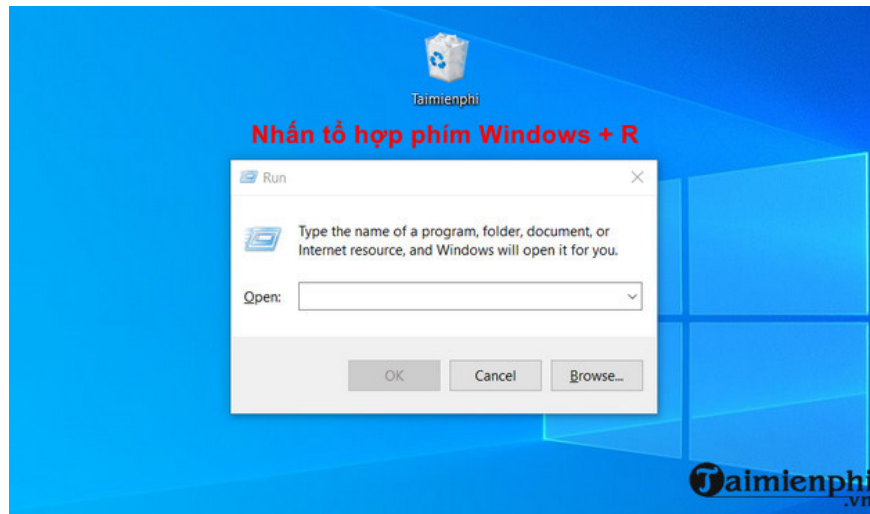
So, we have now completed the process of shutting down the computer using Task Scheduler. You can check the tasks running in Task Scheduler to see if they have actually started.



## *2. Instructions on how to schedule a computer or laptop to shut down.*

### *2.1. How to schedule your computer to shut down without software*

**Step 1:** Press the **Windows key + R** to open **Run** in the Windows system --> then press **Enter**.



**Step 2:** Now you can enter the command below in the blank box.

You type the command there: **shutdown -s -t 600 -c "Shut down the computer after 600, please pay attention"**

**Shutdown** : General shutdown command

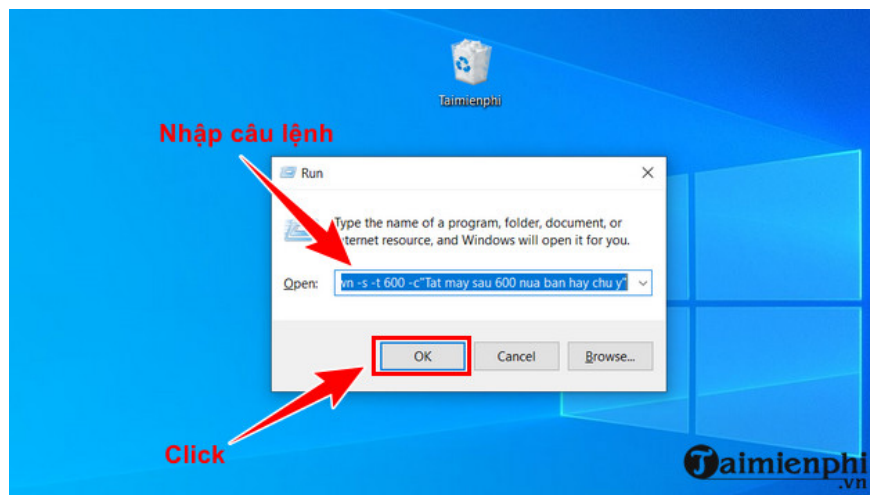
**-s** : Action to perform (here, shut down -s = shutdown)

**-t** : Time command in DOS, measured in seconds

**600** : How many seconds will it take to shut down the computer. Here, it means after 600 seconds, or 10 minutes, the computer will automatically shut down.

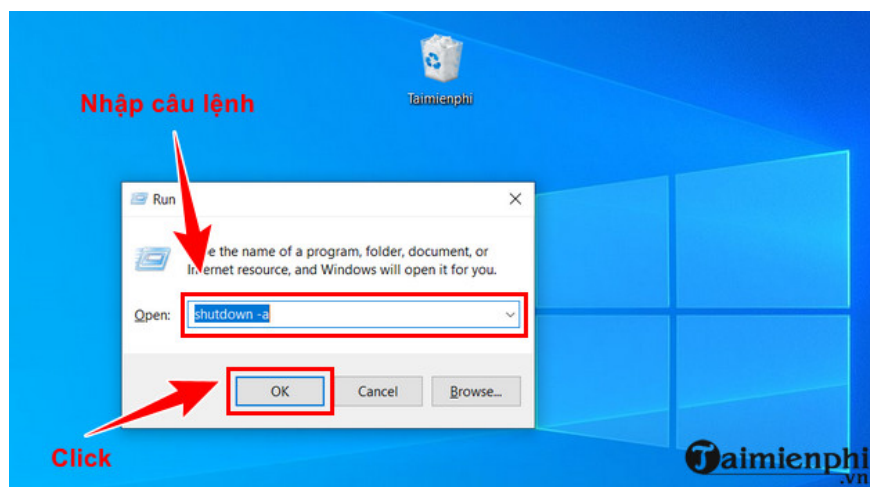
**-c** : Comment for the notification panel (the -c.' part can be omitted).

To finish the command, press **OK** .



**Step 3:** The system will execute the command in **Command Prompt** and then exit automatically.

**Step 4:** If you don't want to shut down the computer, or want to change the shutdown time, simply reopen **Run** and enter the command: **shutdown -a** --> Click **OK**.



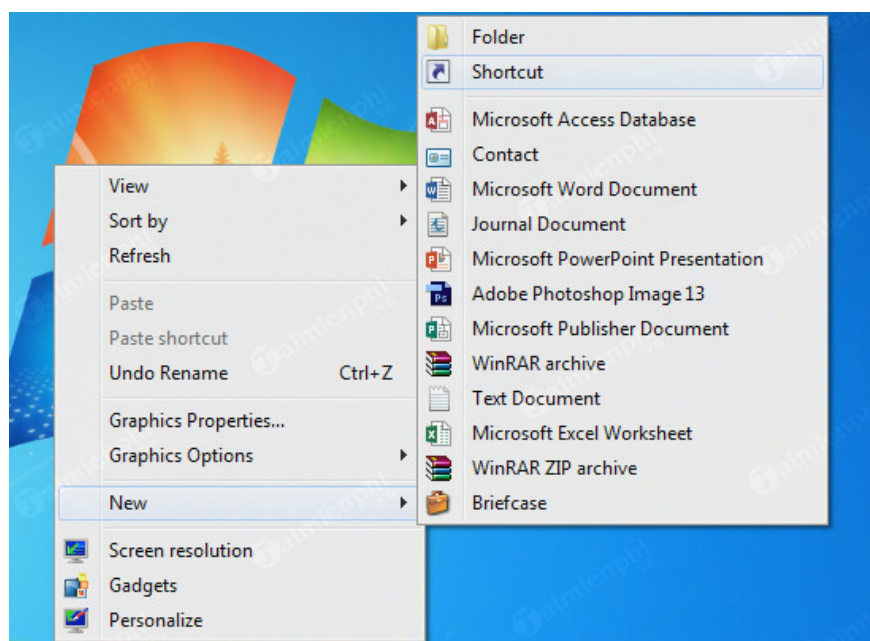
**Step 5:** The system will display a notification about this cancellation.

The above is a method for scheduling automatic shutdown that you can apply without any software that consumes system resources, yet it is still very effective. Additionally, using commands to schedule shutdowns gives you more control over the process on any computer.

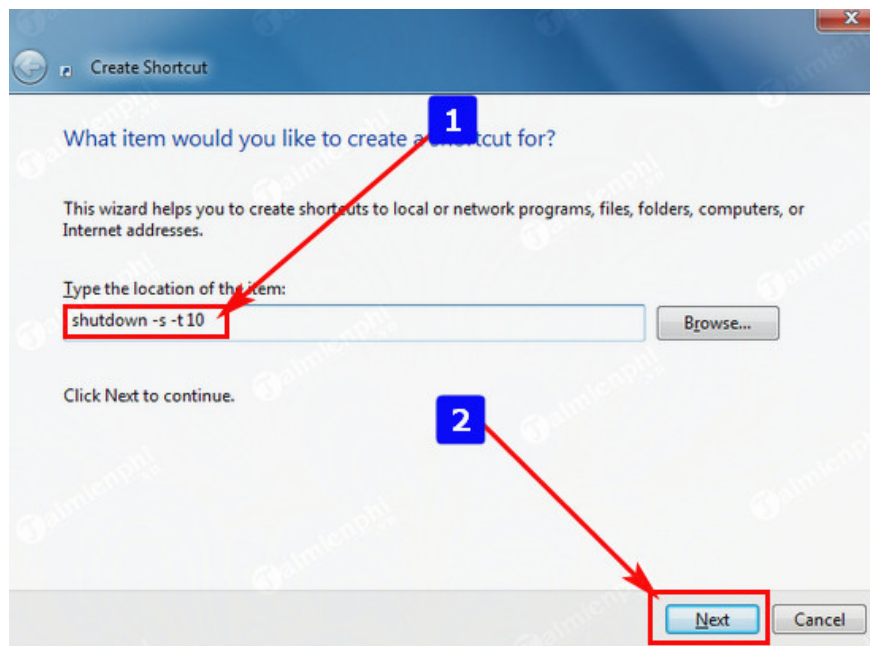
## 2.2. Create a shortcut to schedule a shutdown.

Similarly to shutting down the computer using the command `shutdown -s -t` as above, we will create a shortcut to quickly shut down the computer instead of typing the command, especially for those who have difficulty remembering the command.

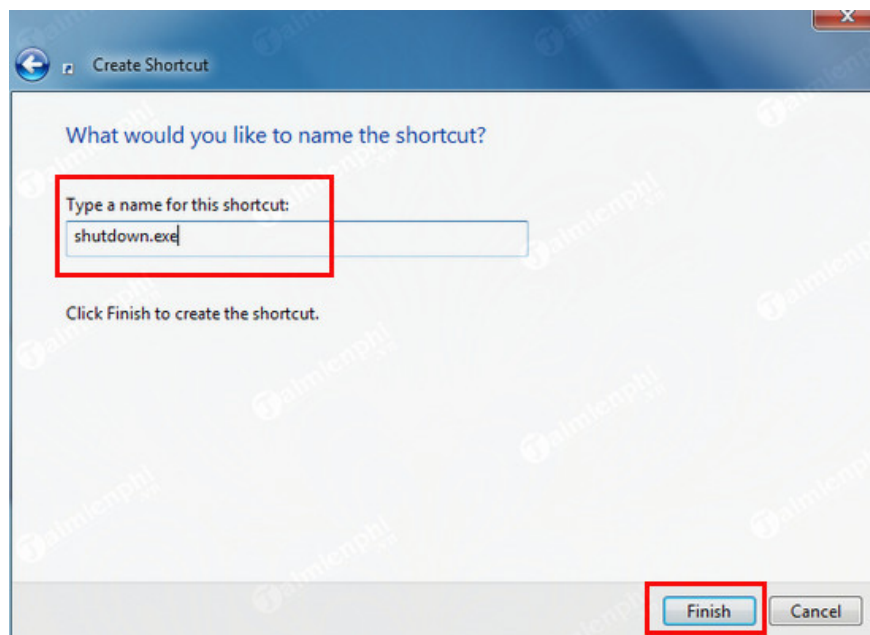
**Step 1:** Right-click on the Desktop, select **New => Shortcut**



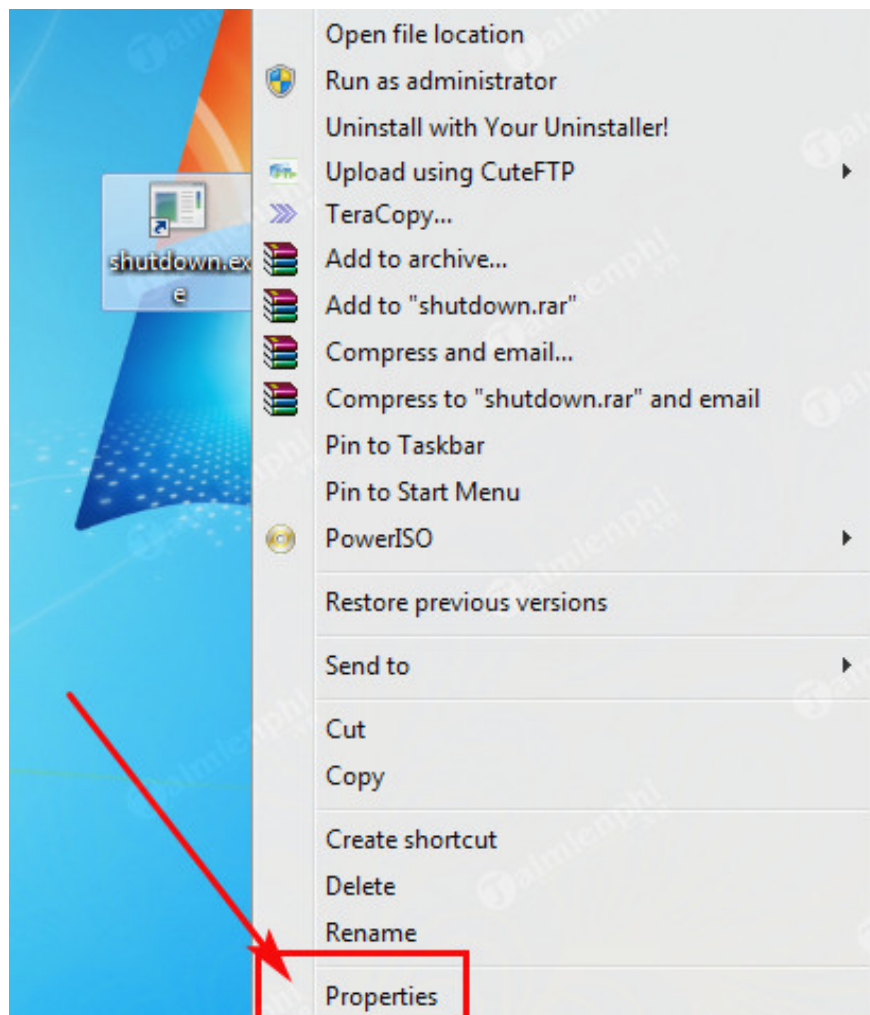
**Step 2:** Click on the shortcut you just created. In the "Type the location of the item" field, enter `shutdown -s -t 10`, where **10** is **the number of seconds**. You can change this number of seconds as you wish; this is just the initial input. Click **Next** to continue.



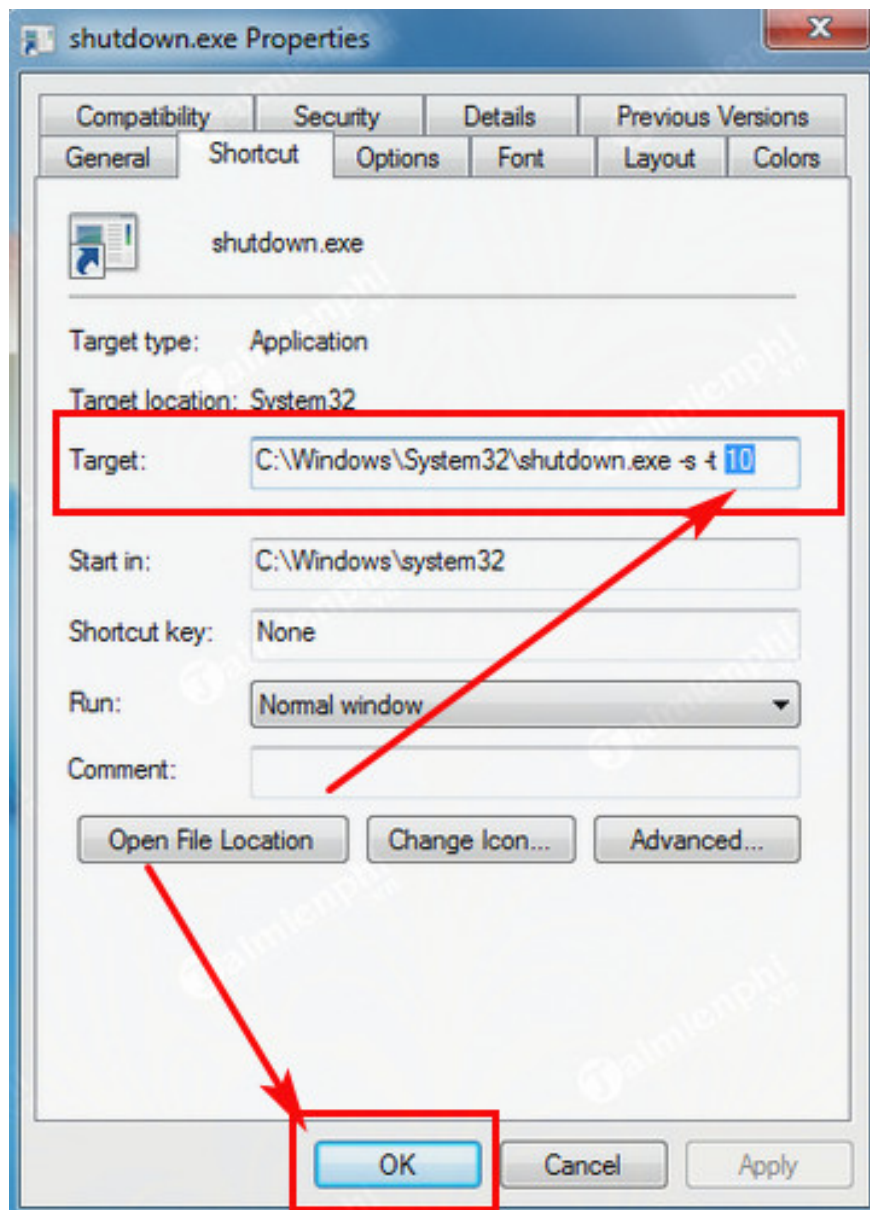
**Step 3:** Enter a name for the shortcut you just created and click **Finish** to complete the process.



**Step 4:** To change the shutdown timer, right-click on the shortcut you just created and select **Properties**.



**Step 5:** You can change the shutdown time by changing the value to "10" in the **Target** field , then click **OK** to confirm.

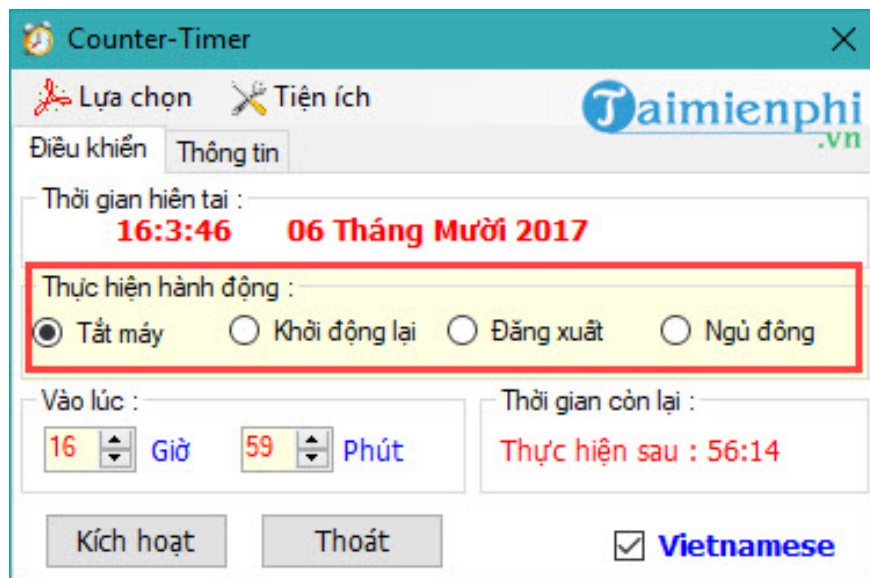


### ***3. How to set a shutdown timer using a Counter Timer***

While using a software-free computer shutdown timer is effective and proactive, not everyone remembers the commands, and you also have to calculate in seconds to convert to the desired time. Counter Timer software will do all of that for you, plus it has many advanced features and a counter that displays the remaining hours before the computer shuts down.

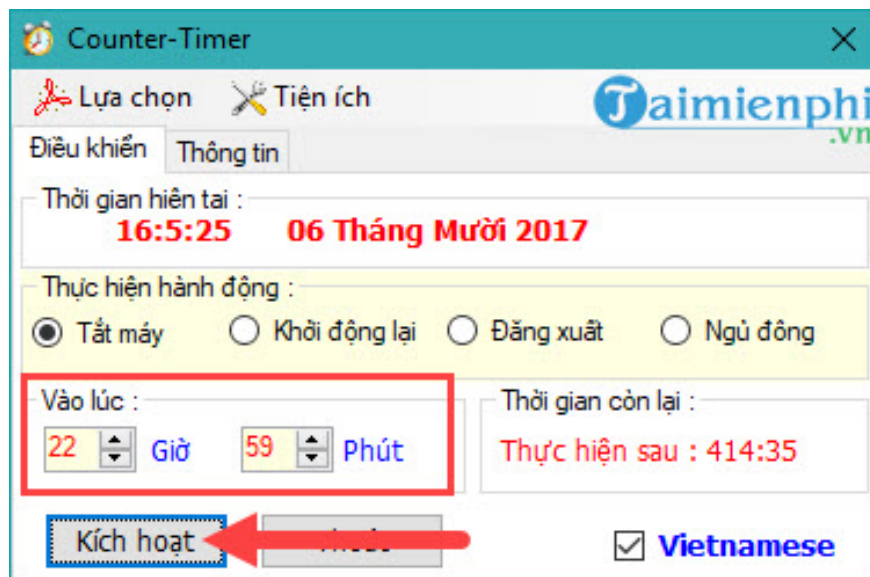
Download **Counter Timer** [here](#).

**Step 1:** Immediately after TipsMake Counter Timer finishes, simply **double-click to schedule your computer to shut down** .

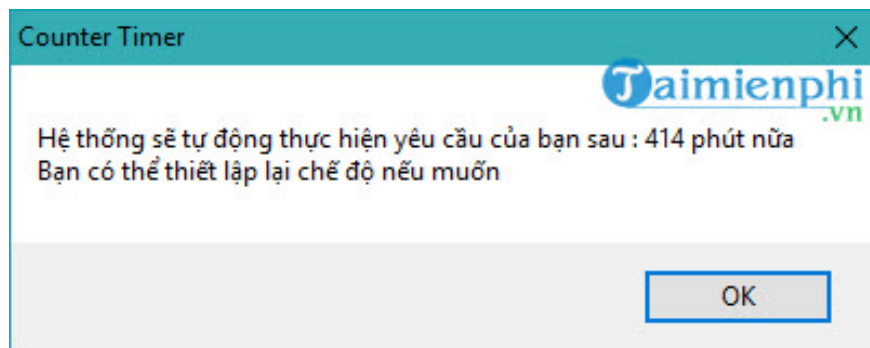


Counter Timer includes four main functions: shutting down the computer, restarting the computer, scheduling a logout from the user account, and putting the computer into sleep mode.

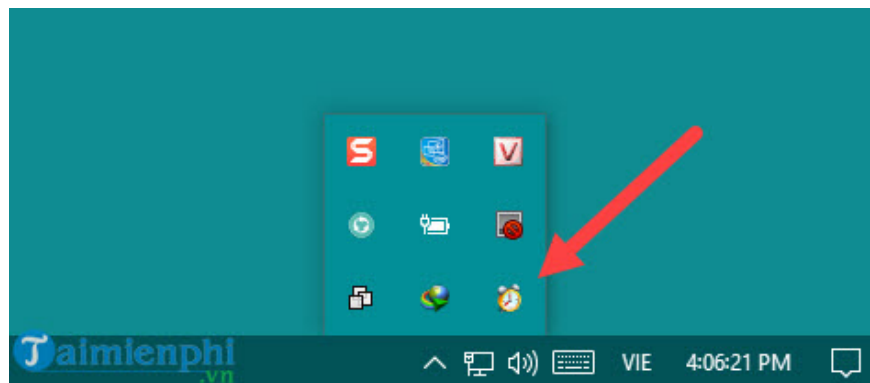
**Step 2:** Since the software displays in Vietnamese, you can easily adjust the desired time to set for the computer to shut down. The remaining time, shown in minutes, is displayed on the right. To set a shutdown timer, click "Activate".



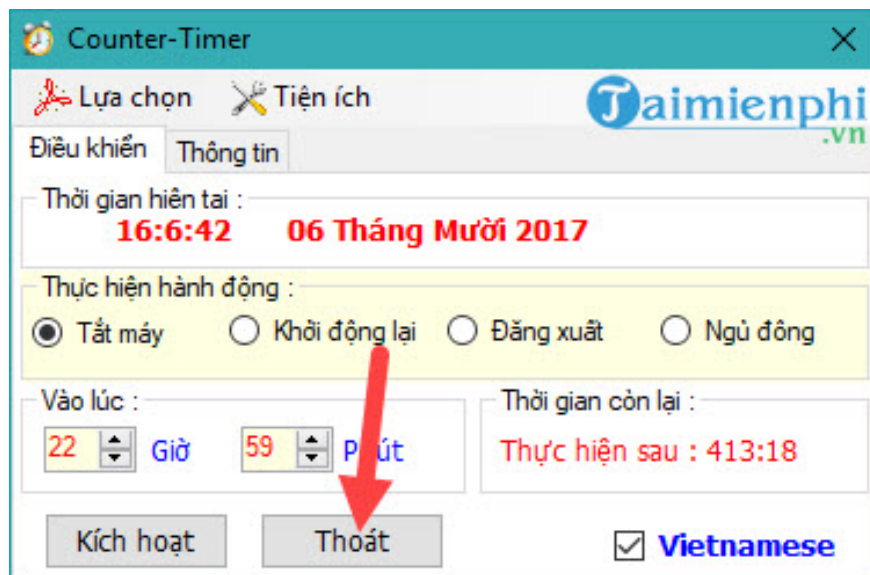
**Step 3:** Upon successful activation, a system notification will appear stating that the request will be automatically processed in . minutes.



**Step 4:** After activating the computer shutdown timer, the system will automatically turn the software into a hidden state. You can reactivate the software from the Taskbar.



**Step 5:** To disable the computer shutdown timer using the software, simply click "Exit" and you're done. It's that simple, isn't it?



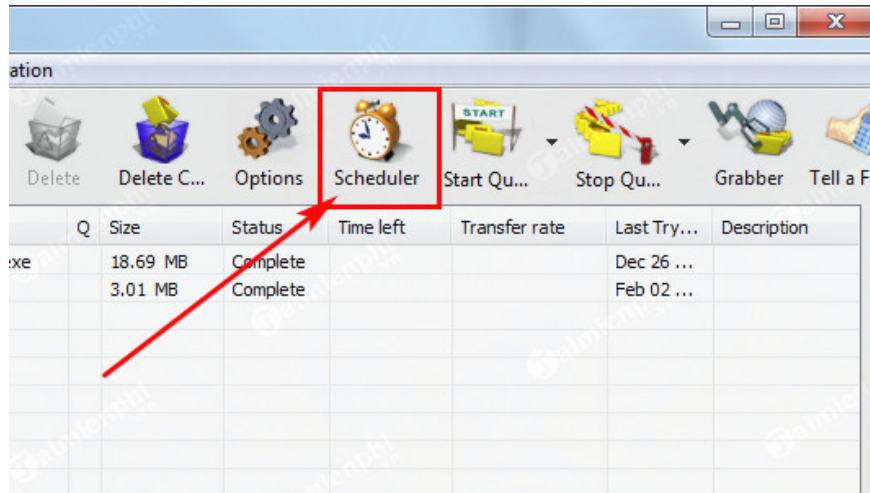
There are many other features in Counter Timer that you can explore on your own, but what TipsMake has introduced is enough for you to schedule your computer or laptop to shut down.

#### 4. Using IDM software, shut down your computer after the file download is complete.

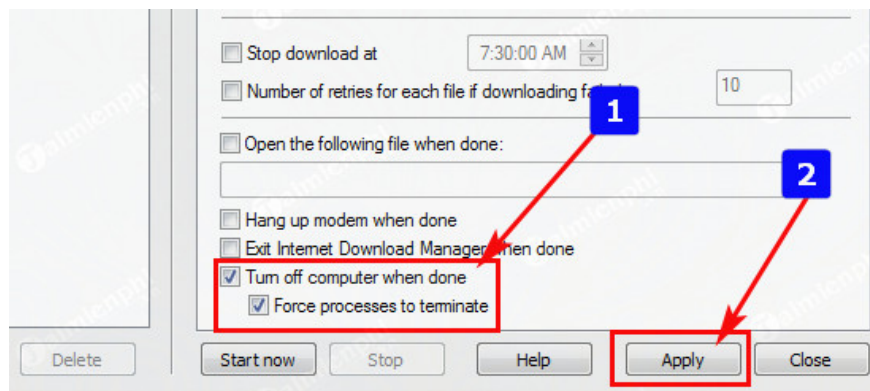
IDM is a very popular software for downloading files and videos. If you also use this software, you can use the feature to schedule your computer to shut down after the download is complete.

- Link to download the latest version of **IDM** .

**Step 1:** In the IDM software interface, select **Scheduler**.



**Step 2:** In the dialog box that appears, select the two options: **Turn off computer when done** and **Force processes to terminate**, then click **Apply** to apply the changes.



Above are four ways to schedule automatic shutdown, including methods that use both software and software. Each method has its own advantages, disadvantages, and conveniences. Choose the method that best suits your needs and preferences.

Besides the two methods of scheduling laptop shutdown mentioned above, TipsMake also recommends another method widely used: scheduling a computer shutdown using Auto Shutdown, one of the best shutdown scheduling software currently available. If the four options above don't satisfy you, choosing to shut down your computer using Auto Shutdown is also a great option.

Setting a shutdown timer in Windows 10 is a common desire among many computer users, especially when they have unfinished tasks but can't sit at their computer to monitor it. If you're unsure how to set a shutdown timer, you can refer to the tutorial on TipsMake sharing various methods for scheduling a shutdown in Windows 10 .

You finished reading the article "**How to schedule your computer to shut down automatically without software.**" edited by the [TipsMake](#) team. We hope this article has provided you with many useful tech tips and tricks. You can search for similar articles on tips and guides. Thank you for reading and for following us regularly.