

# How to schedule a computer to turn off on Windows 10

The following article details instructions How to turn off the computer on Windows 10 - a very optimal feature for those who listen to music before going to bed.

You often work through the night, but in some cases you've fallen asleep without forgetting to turn off your PC. The following article details instructions **How to turn off the computer on Windows 10** - a very optimal feature for those who listen to music before going to bed.

## Method 1: You want to schedule a shutdown after a period of time.

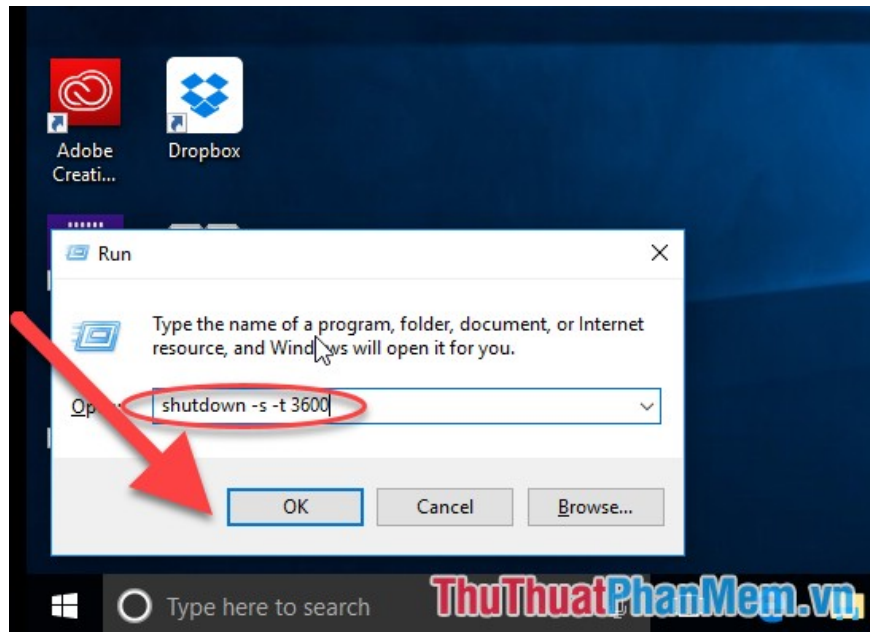
To simplify shutdown timer, you do not need to install any additional software. Extremely simple operation:

**Step 1:** Press the Windows + R key combination to open the **Run** dialog box enter the command:

**Shutdown -s -t 3600**

Inside:

- **Shutdown:** Turn off the computer
- **s:** Abbreviation for shutdown
- **t:** stands for time
- **3600:** The time in seconds is the shutdown timer, this value is set at your discretion.

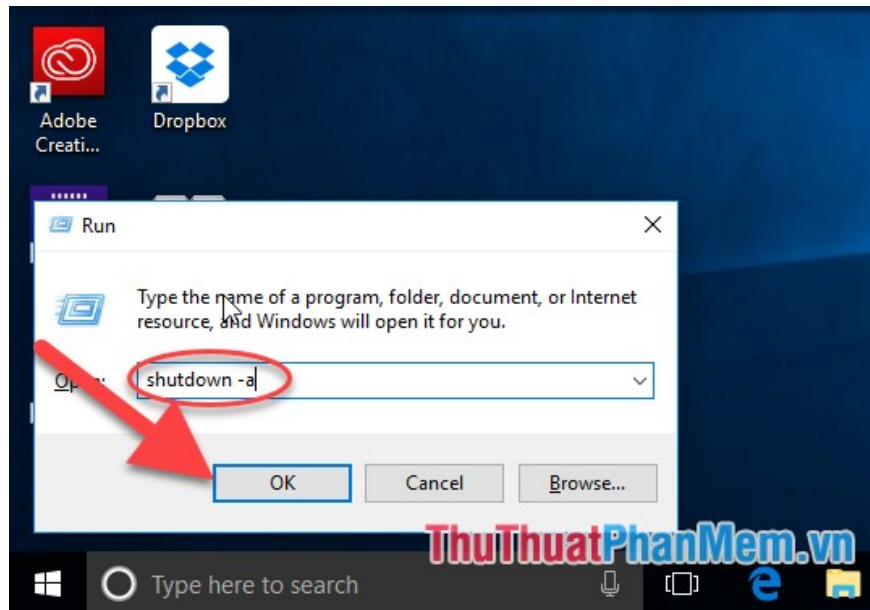


**Step 2:** Press **Enter** to display the message that the computer will automatically turn off after a period of time you've just set:

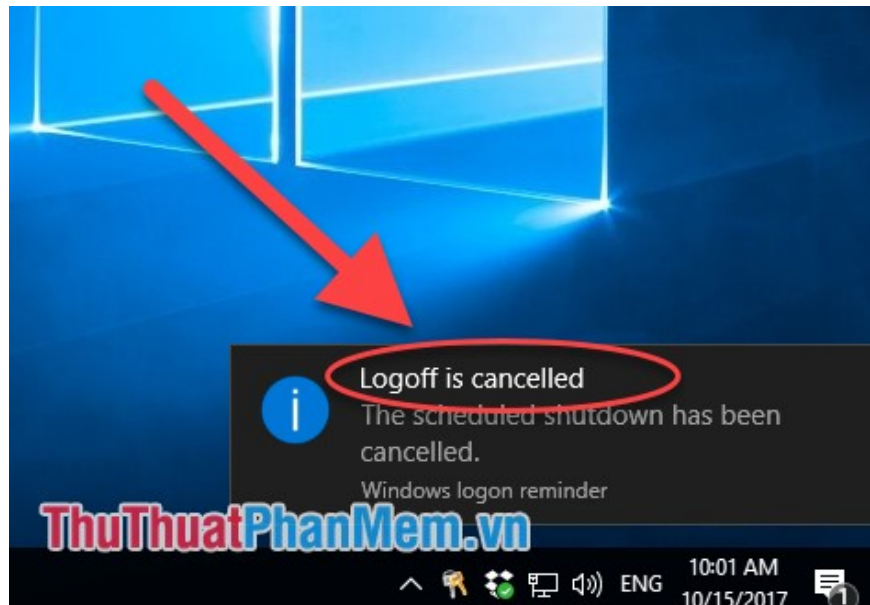


- In case if you continue working with the computer, want to eliminate the automatic shutdown - press the key combination **Windows + R** to enter the command:

**Shutdown -a**



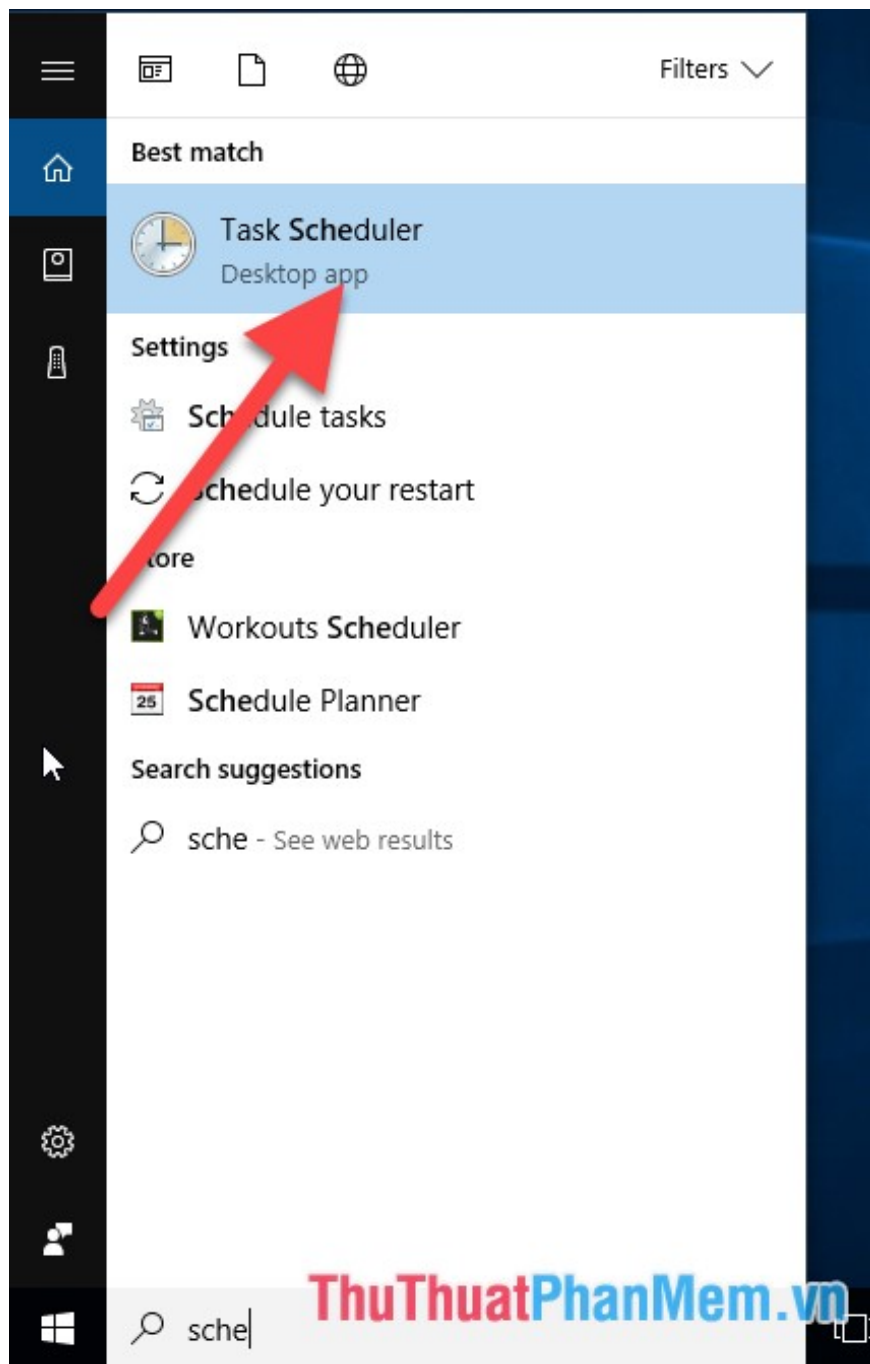
- Pressing **Enter** displays the message that you have canceled the command to turn off the computer:



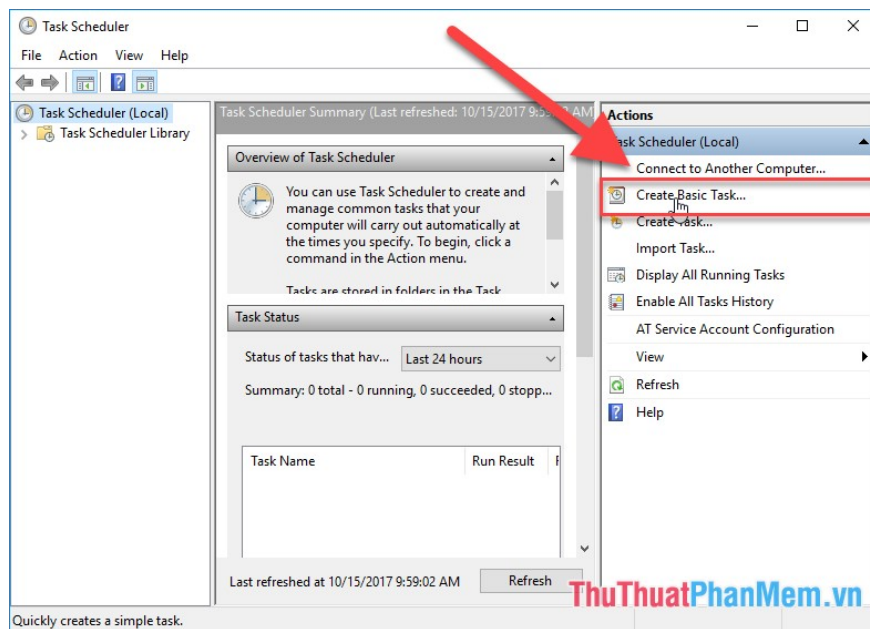
## 2. Schedule shutdown by Task Scheduler for several days

Shutdown via Shutdown in Part 1 can only perform a shutdown timer once and when you want to continue, the computer will still shut down at the set time. Here if you use the **Scheduler**, you can schedule a shutdown of the computer over several days with a built-in calendar and fix the above disadvantages.

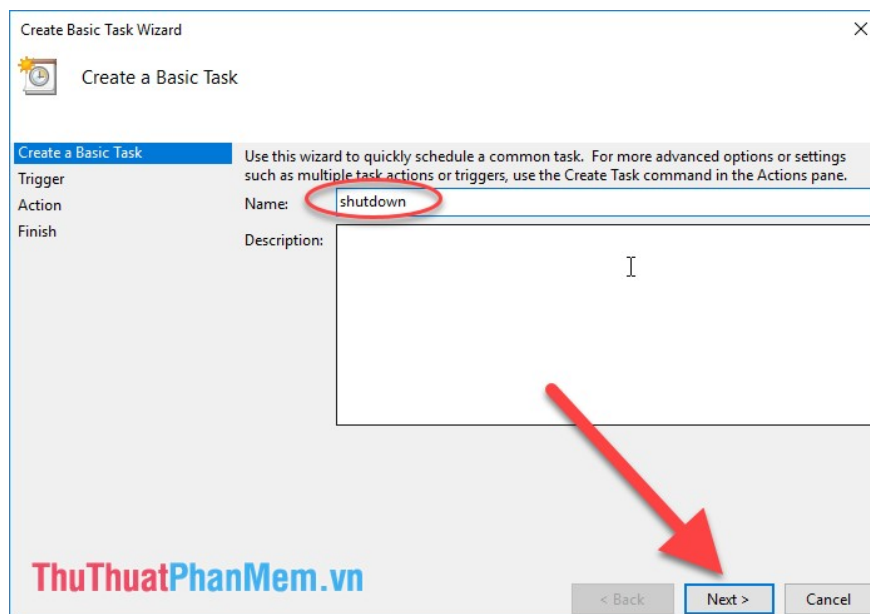
**Step 1:** Type the keyword **Scheduler** to open **Task Scheduler**



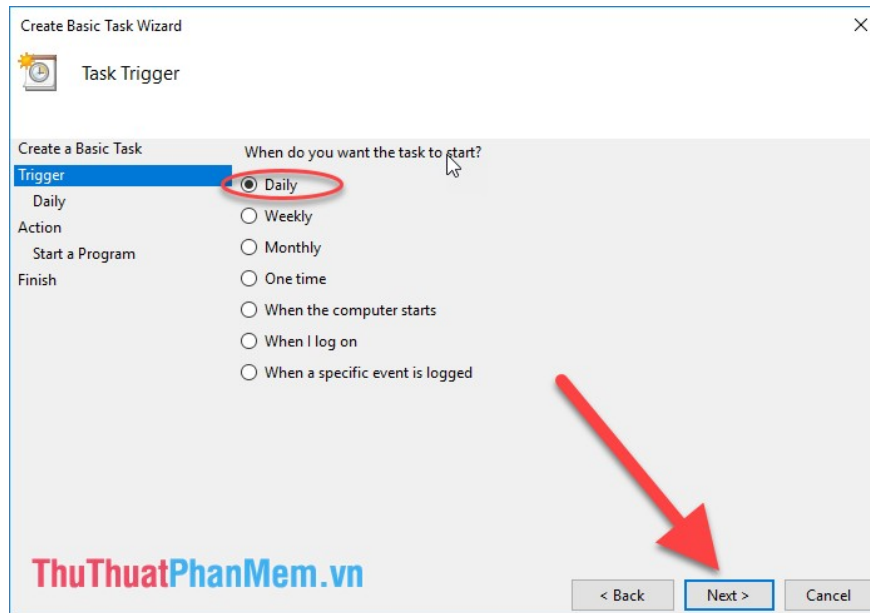
**Step 2: Click Create Basic Task:**



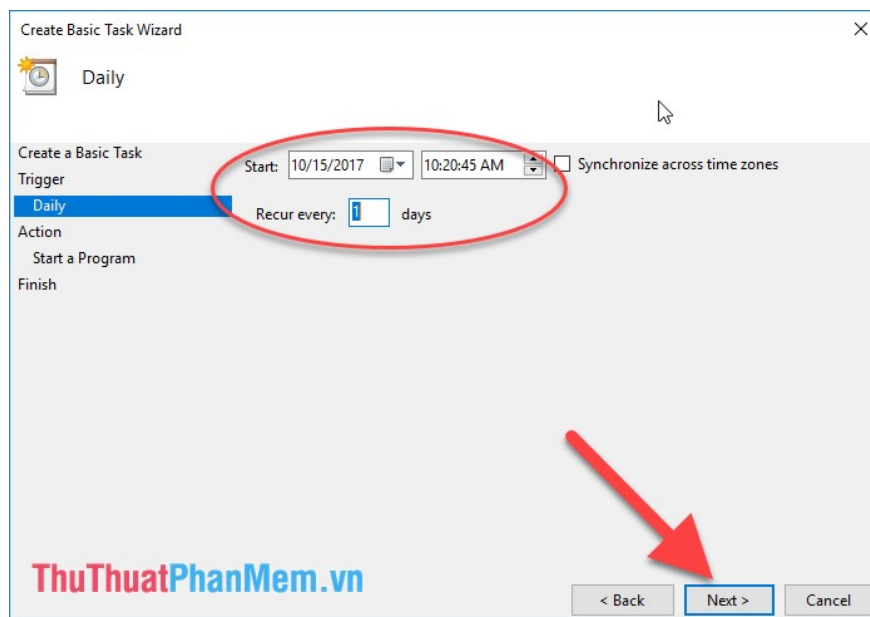
**Step 3:** Enter the name you want to give the task, for example, here shutdown -> click **Next:**



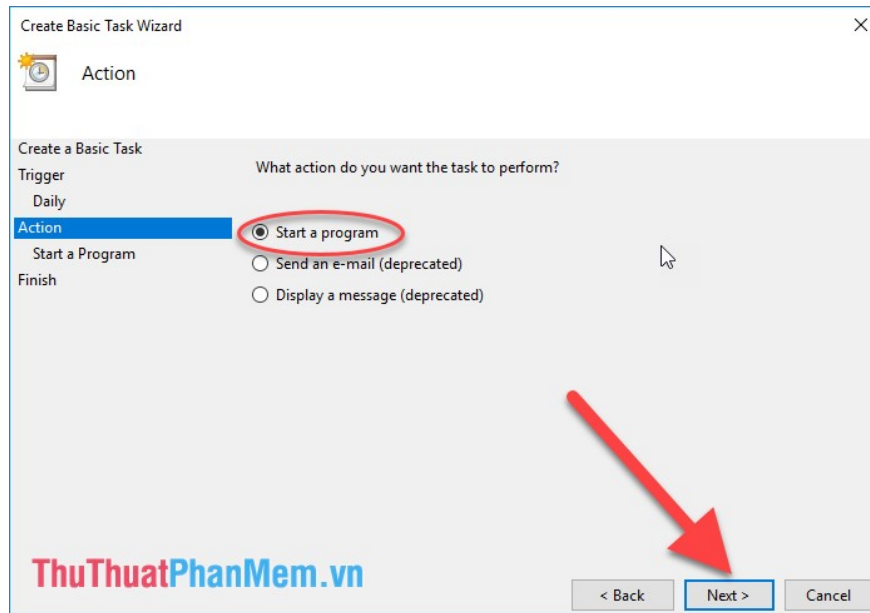
**Step 4:** Select the time to apply the shutdown, for example, select **Daily** to set the shutdown daily, weekly: weekly . Options according to your wishes and work -> click **Next:**



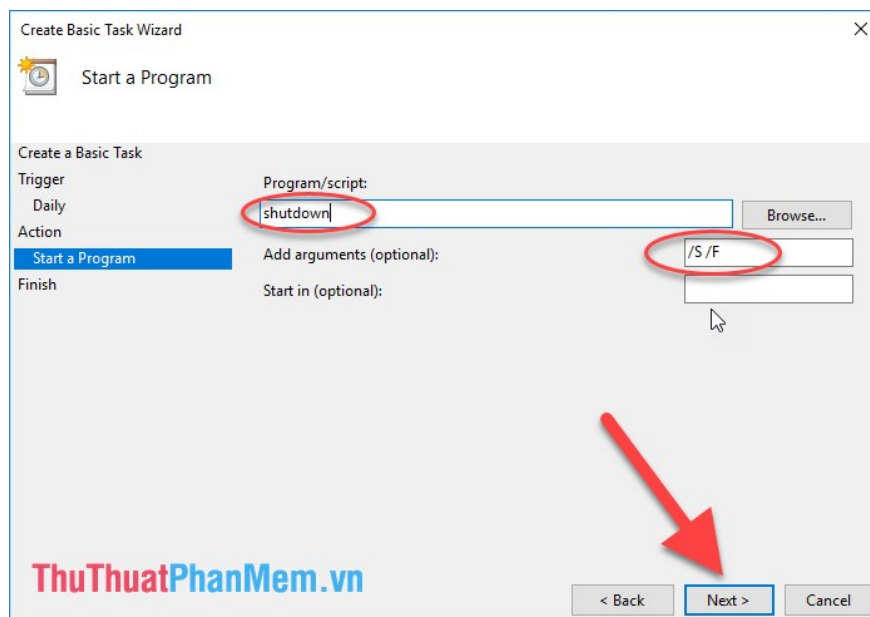
**Step 5:** Select the automatic shutdown time and start date to make this setting. In the Recur Every section, apply daily settings -> click **Next:**



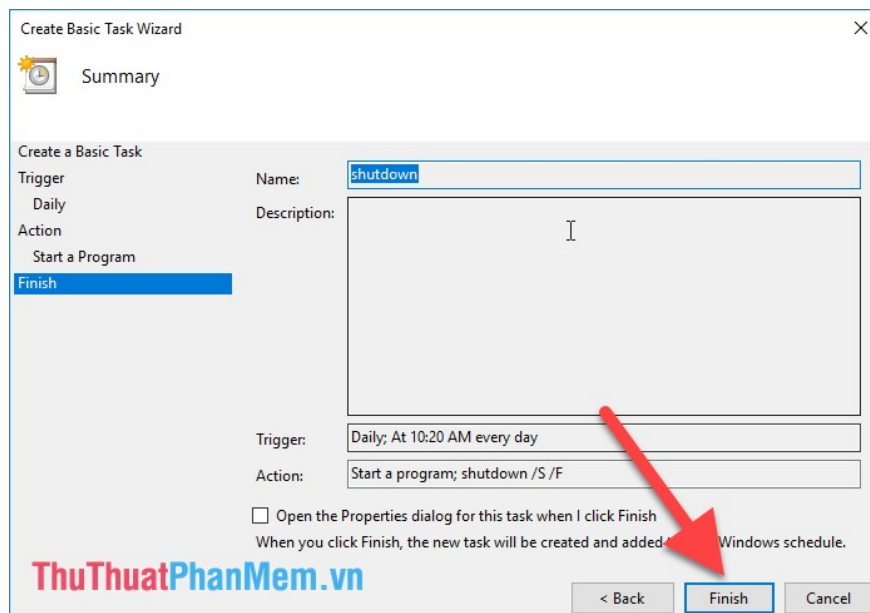
**Step 6:** Click **Start program** -> **Next:**



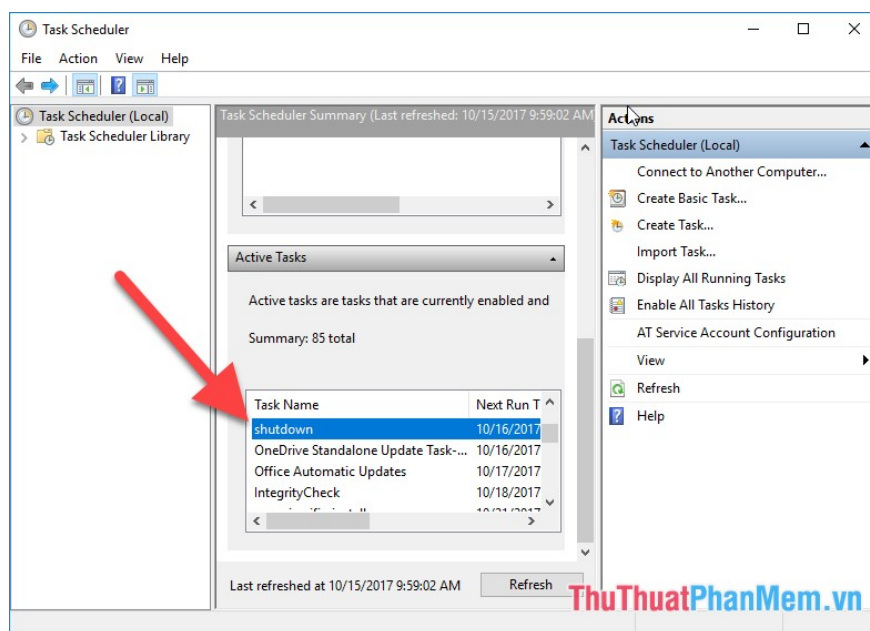
**Step 7:** In the **Program / Script** section, enter **Shutdown**, in the **Add Argument** section, enter **/ S / F** ( between / S and / F contains spaces) -> click **Next**:



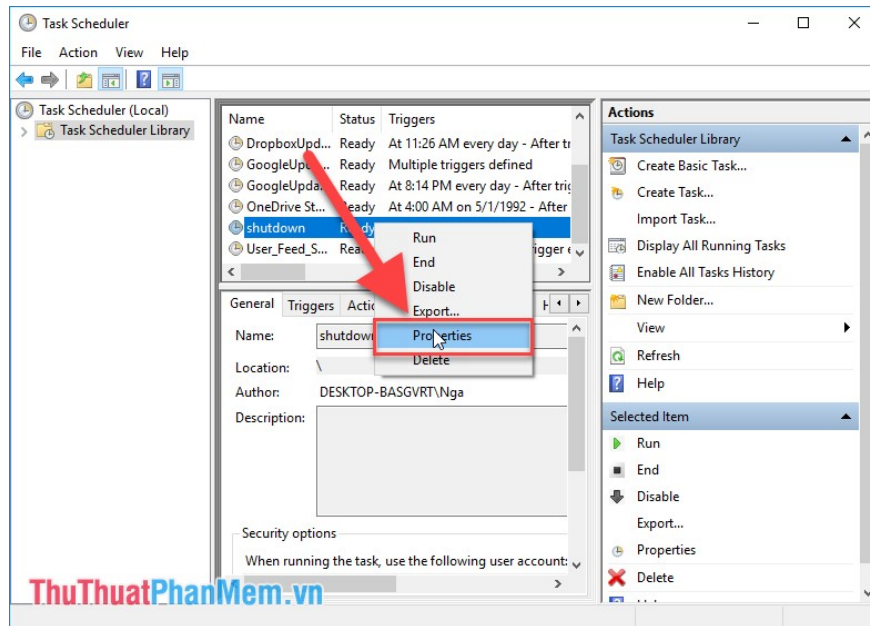
**Step 7:** Finally, click **Finish** and you have created the automatic shutdown timer task:



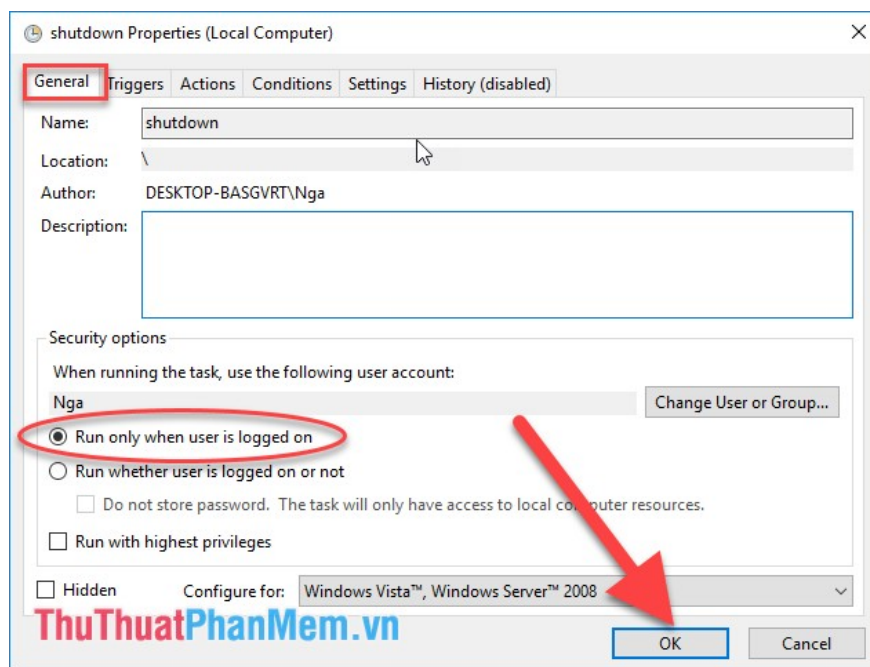
- So you have a daily shutdown timer, but for the shutdown to be accurate and customizable in some cases you need to make the following additional options. Click on the newly created Shutdown task:



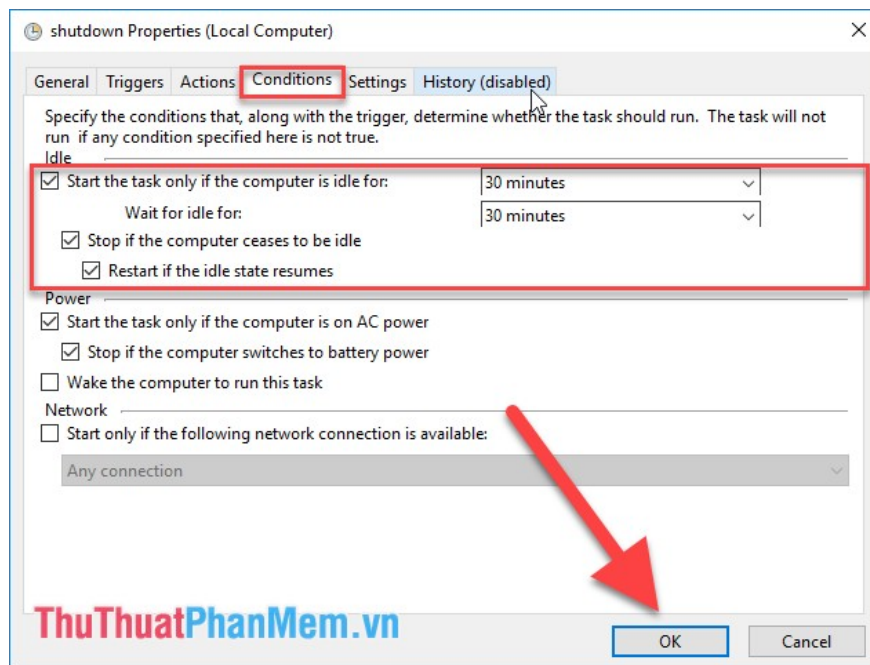
+ Right click on the **Shutdown** task -> **Properties:**



+ In the **General** tab, select **Run only when user is logged on** to prioritize running this task -> click **OK**:



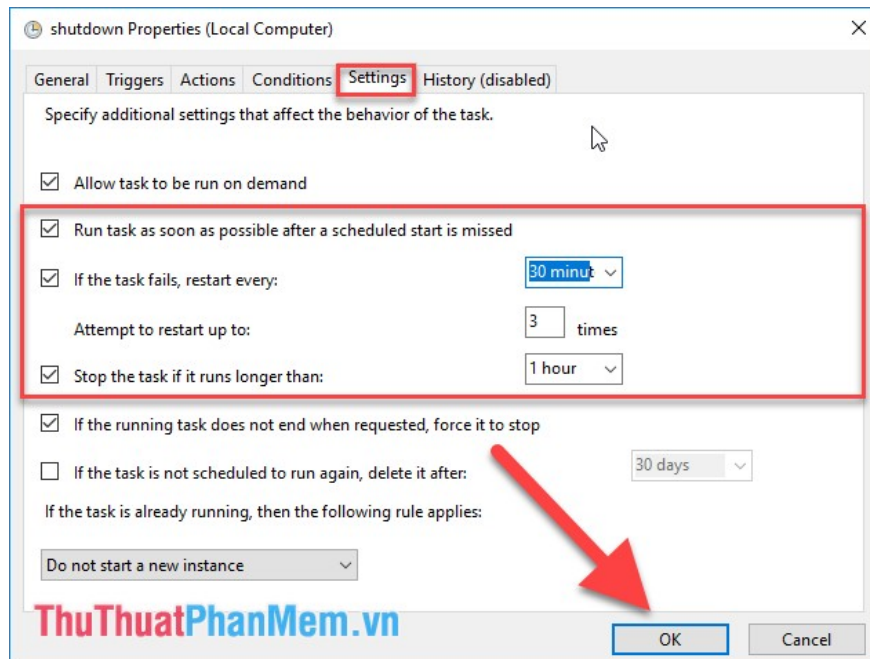
+ Move to the **Conditions** tab to make changes as in the frame (you can change other time values). For example, here select the value of 30 minutes ie during the Shutdown task run it check within 30 minutes before shutdown if you are still using a keyboard or mouse, the machine will wait for another 30 minutes to perform shutdown. This feature is very good when you want to work with your computer:



+ Finally move to the Settings tab to change features like frames. This configuration aims to:

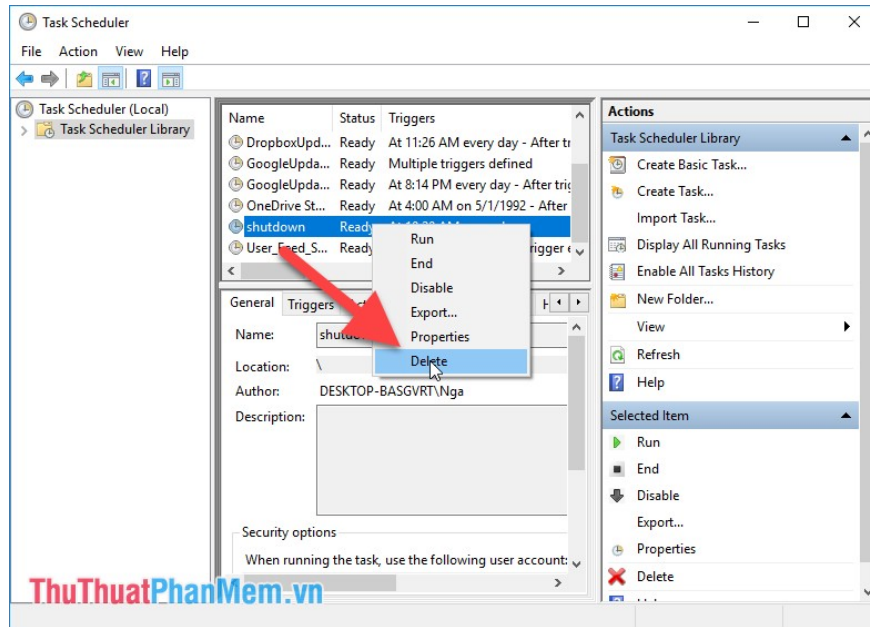
\* If the Shutdown run task fails during the first run it will automatically run again after 30 minutes.

\* If the task runs more than 1 hour compared to the time you set the shutdown in the task, the task stops running ie it does not shut down at the scheduled time and the computer will only turn off when you turn it off.



- The value of runtime and running time compared to the scheduled time you can customize as you like.

- If you have removed the night-working habit and want to eliminate the shutdown timer, right-click the task and select **Delete**:



Above are 2 ways to turn off the computer on Windows 10. Depending on your habits and work needs, choose a reasonable shutdown timer. Good luck!

You finished reading the article "**How to schedule a computer to turn off on Windows 10**" edited by the [TipsMake](#) team. We hope this article has provided you with many useful tech tips and tricks. You can search for similar articles on tips and guides. Thank you for reading and for following us regularly.