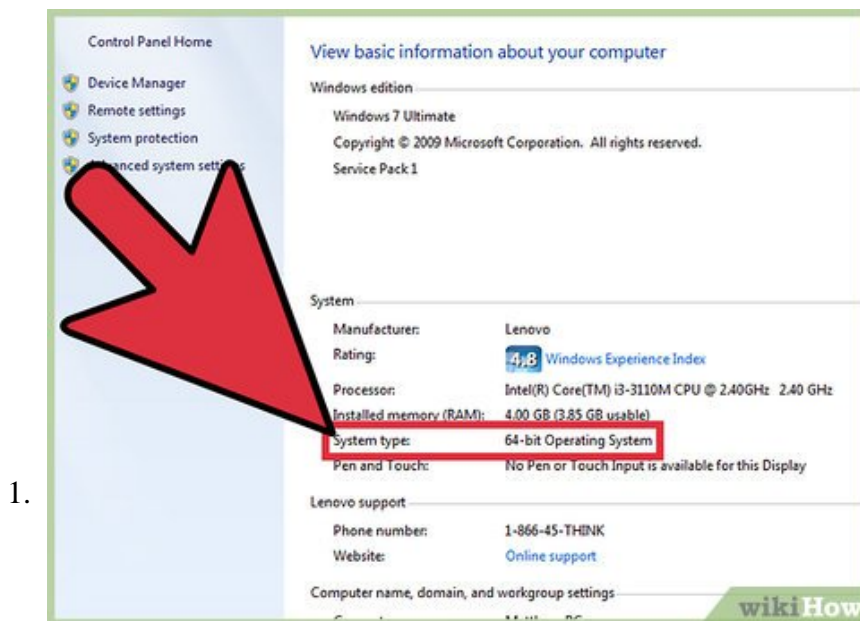


# How to Run Ubuntu from Windows as an Executable

Virtual machine software allows you to take other operating systems such as Ubuntu in your Windows environment to try out the operating system. Running Ubuntu in a virtual machine will not give you the full potential of your hardware, but...

Part 1 of 2:

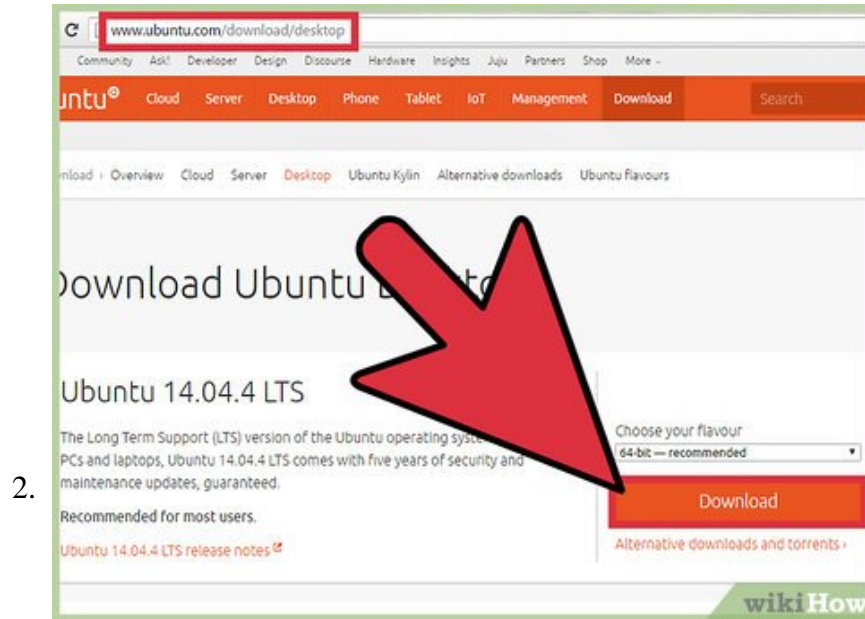
## Installing Virtual Machine Software



**Determine the CPU type of your computer.** You will need to set up a virtual machine and download the ubuntu operating system that works best with your hardware. On your Windows host computer, going to your Control Panel then viewing your system information will show you this information. It will show either x86 (32-bit) or x64 (64-bit).

1. On Windows 7 and other previous versions you can click on 'Start', click on 'Control Panel' then click on 'System.'
2. If You are running Windows 8, right click on the Windows icon, click 'Control Panel' to open the Control Panel. In the top right corner, search for 'System.' You should see an option that says 'System' in green text that appears bigger than the other options on screen.
3. You can get to the Control Panel through the file explorer by holding **Win** and pressing the **E** key simultaneously. In the left column click on 'This PC' or 'My Computer' then in the ribbon at the top of the window will show an option that says 'Open Control Panel' to open the control panel. In the

top right corner, search for 'System.' You should see an option that says 'System' in green text that appears bigger than the other options on screen.

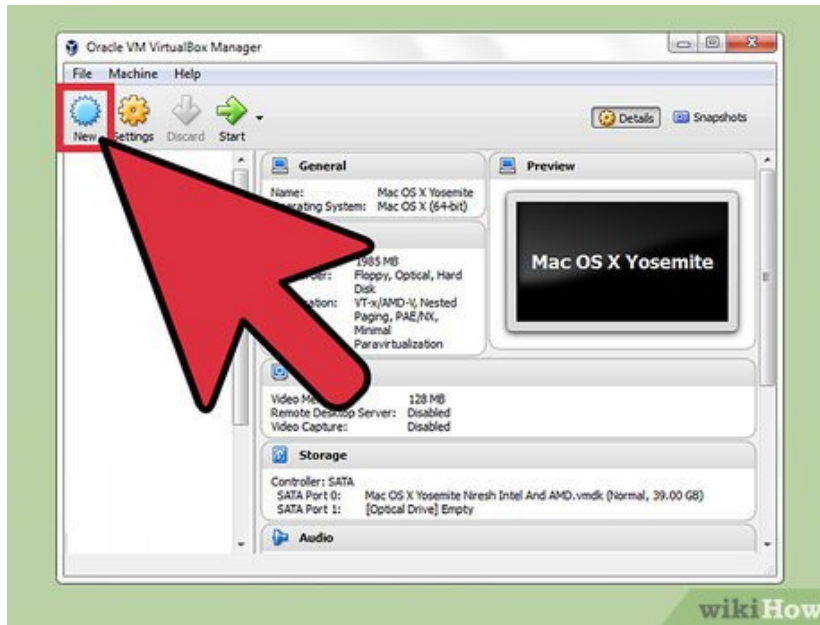


**Download the Ubuntu operating system.** You can use your web browser to navigate to the official Ubuntu website. Be sure to download an operating system that is optimized for your x86 or x64 CPU. You will receive a file that will be in a disk image format also known as an ISO file.<sup>[1]</sup>



**Download and install virtual machine software.** You can make use of software such as Oracle VirtualBox or VMware Workstation Player. You are able to download the software for free so long as it is for personal use.<sup>[2]</sup>

4.



**Create a virtual machine.** Open your virtual machine software. Depending on which program you are using will require different steps.

1. In Oracle VirtualBox, you can create a virtual machine by clicking on the 'Machine' menu at the top of the window, clicking the 'New' icon at the top of the window or hold **Ctrl** and **N** at the same time
2. In VMWare Workstation Player, click on the 'Home' option in the left column of the window, then click on 'Create a New Virtual Machine' on the right hand side.

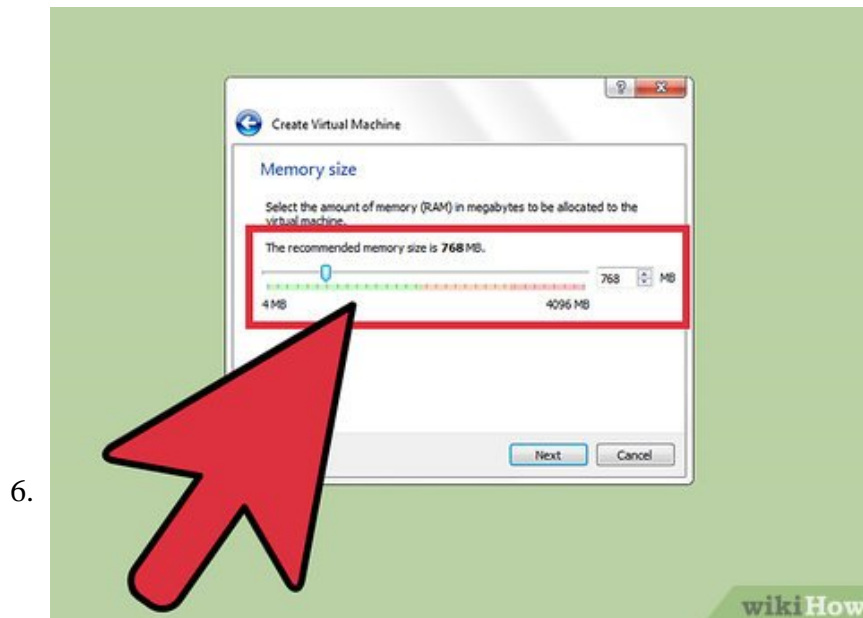
5.



**Choose the Ubuntu operating system for your virtual machine.** You will receive several prompts to configure your virtual machine.

1. In Oracle VirtualBox, provide a name for your virtual machine. You will see two drop down options for the operating system. Specify the operating system type as 'Linux' and change the version to be 'Ubuntu.' There will be 32-bit and 64-bit operating system types.

2. In VMWare Workstation Player, you can choose to locate the ISO or CD containing the Ubuntu installation which will auto detect your operating system and CPU type, then click on Next. You will need to provide information for your account on the system by providing your full name, your user name and a password then click on 'Next.' You will need to provide a name for your Ubuntu machine and provide a location on where to save your machine.



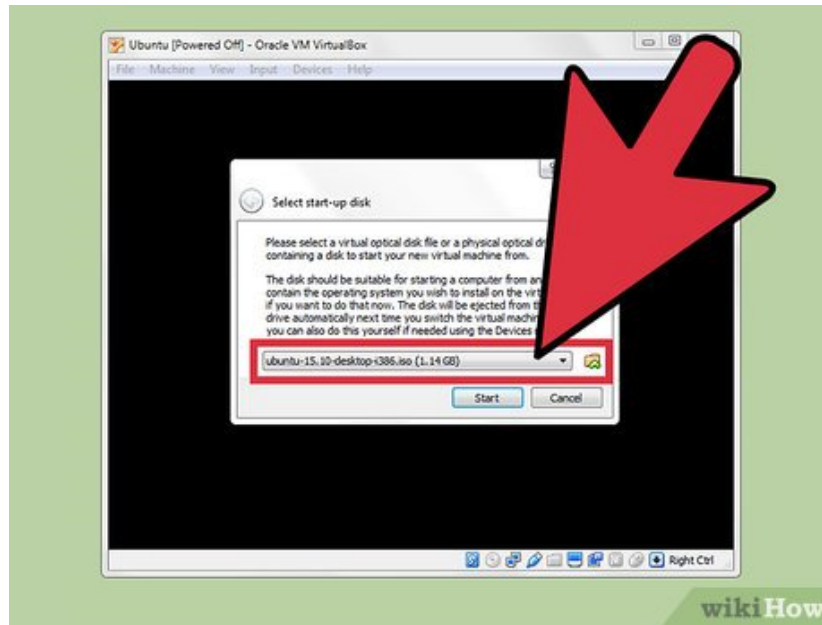
**Allocate system resources to your virtual machine.** You will need to specify the amount of memory (RAM) and hard disk space for your virtual machine and click "Next" to continue to the next prompt. Your virtual machine will be created onto the list of virtual machines in your manager window.

1. VMWare Workstation Player will provide the recommended settings for RAM, but you can change this once you receive a prompt that shows the specifications of your virtual machine after you provide the option to allocate hard disk space. Click on 'Customize Hardware' then click on memory from the left hand column. You will be able to adjust the slider located on the right hand column to allocate the amount of RAM for your virtual machine.
2. Your virtual machine will need resources allocated from your actual hardware. Be sure to leave enough resources for your host machine.
3. Provide over 6.7GB of disk space for your installation as Ubuntu requires this for installation.

Part 2 of 2:

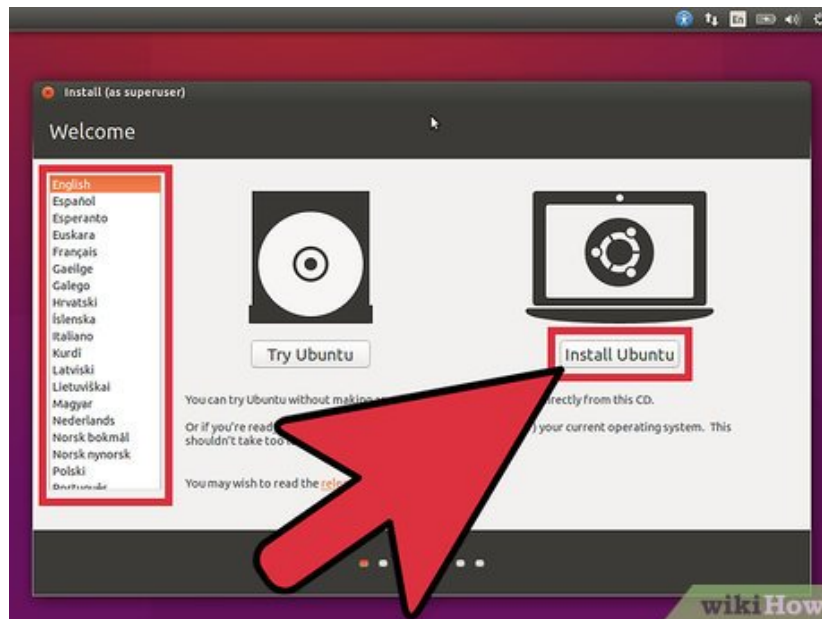
## **Installing Ubuntu on your Virtual Machine**

1.



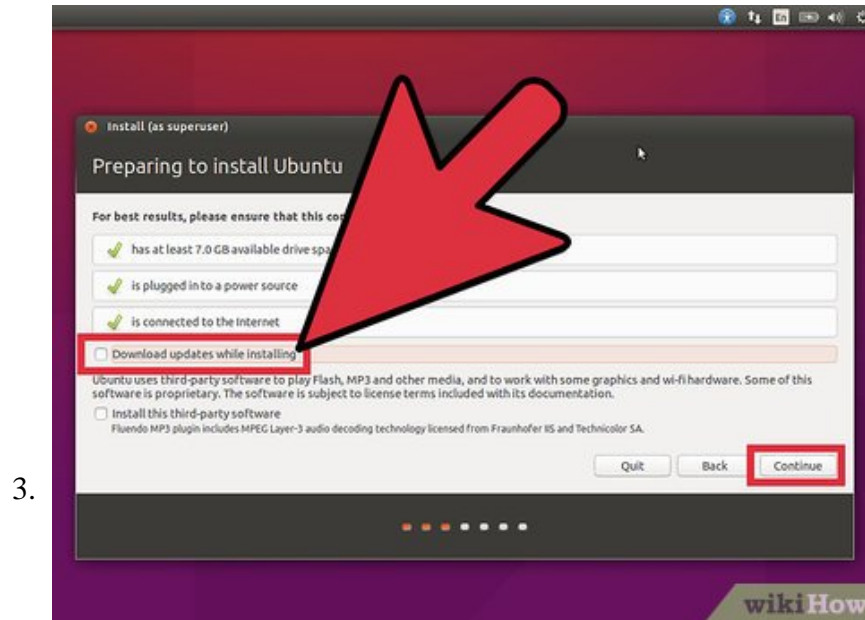
**Mount the Ubuntu ISO to your virtual machine.** Start your Ubuntu virtual machine by double clicking on it from the list on your virtual machine manager. It will prompt for an ISO to install the operating system. Browse your computer to locate where the ISO was downloaded to. Start your virtual machine to proceed to the startup sequence.

2.



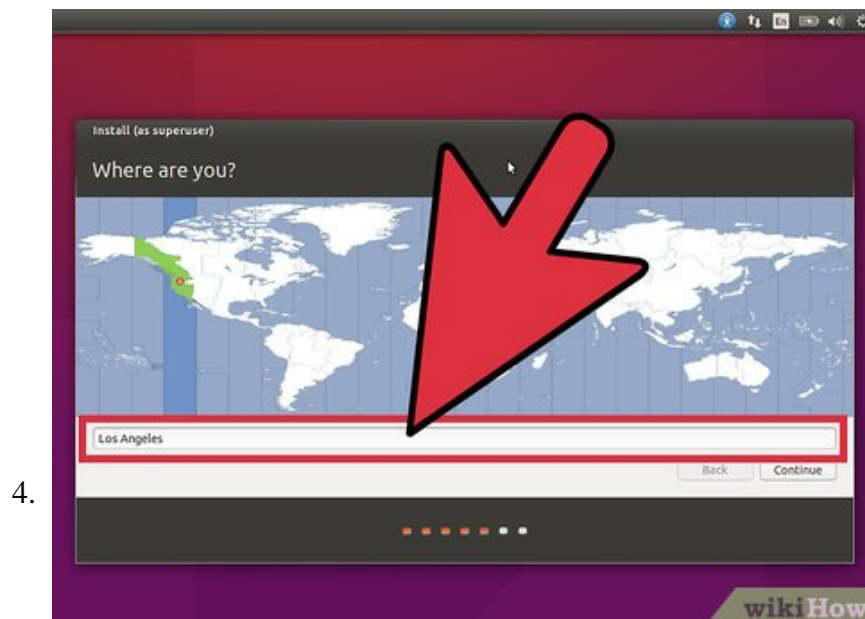
**Choose your language and install Ubuntu.** After the startup sequence, you will see a language selection option and two buttons. With your mouse, choose your preferred language and then click on the 'Install Ubuntu' button.

1. The prompts will indicate what will happen to the current virtual machine and will not affect your main Windows computer.



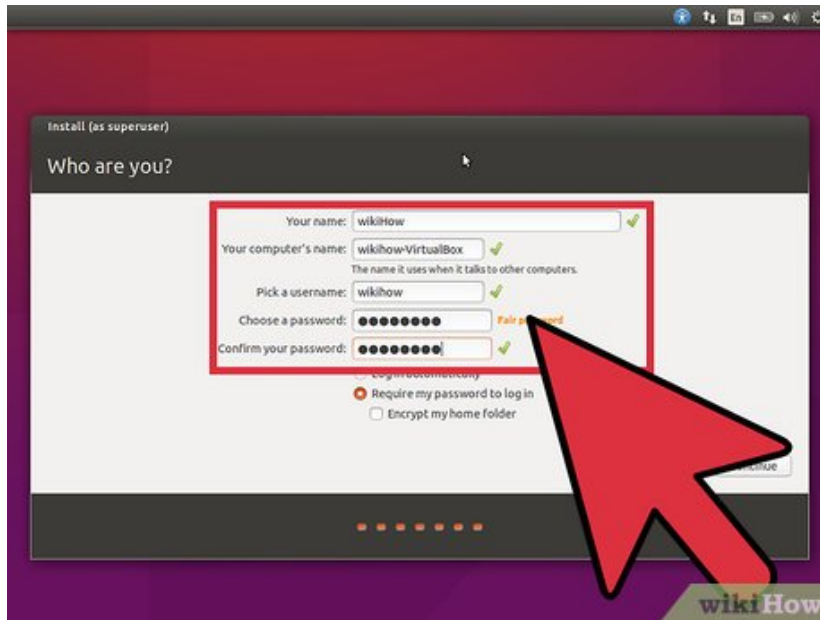
**Follow the installation prompts.** Ubuntu will check your virtual machine's resources.<sup>[3]</sup> You can opt to install updates and install third party software then click on 'Continue.'

1. If your virtual machine setup does not meet the installation requirements, you can shut down Ubuntu and turn off your virtual machine to change the hardware specifications of your virtual machine through the virtual machine manager software.
2. If you choose to install additional software or updates it will require a network connection on your virtual machine and you may be prompted for additional configuration if you are using a wireless connection.



**Choose your time zone.** You will receive a prompt for what time zone you currently reside in. Choose your time zone then click on 'Continue.'

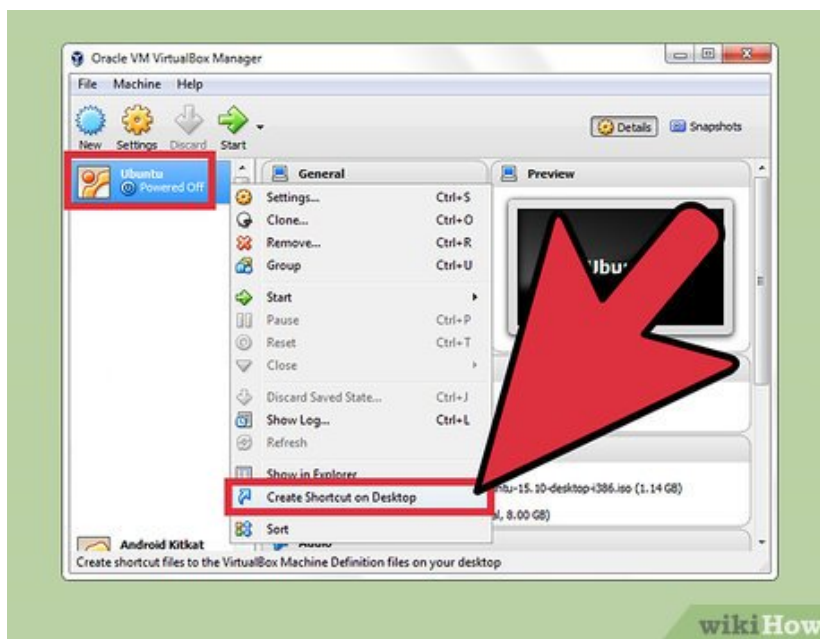
5.



**Create a profile for your computer and username.** Ubuntu will ask you to provide a name for your computer as well as a username and password for your login. Click on 'Continue' to let the installation process complete.

1. Be sure to note down your password. You can set your login to happen automatically when Ubuntu boots up, but when your virtual machine goes to sleep or if you are looking to install software that requires superuser privileges, you will need to use your password.

6.



**Create a shortcut of your virtual machine to your desktop.**

1. In Oracle VirtualBox, you can create a desktop shortcut by right clicking on the desktop from the list of virtual machines or by using file menu commands.
2. VMWare Workstation Player does not provide a native way to make a desktop shortcut. Instead, right click on your desktop, choose 'New' and click on 'Shortcut.' In the new window you will see a location field. Type in 'The path to the vmware program' '-X' 'The path to your virtual machine's

\*.vmx file' The -X command tells the shortcut to open the program and to start the identified virtual machine. Be sure to use quotation marks as well. Click on 'Next'. Provide a name for the shortcut then click on 'Finish.'<sup>[4]</sup>

You finished reading the article "**How to Run Ubuntu from Windows as an Executable**" edited by the [TipsMake](#) team. We hope this article has provided you with many useful tech tips and tricks. You can search for similar articles on tips and guides. Thank you for reading and for following us regularly.

---