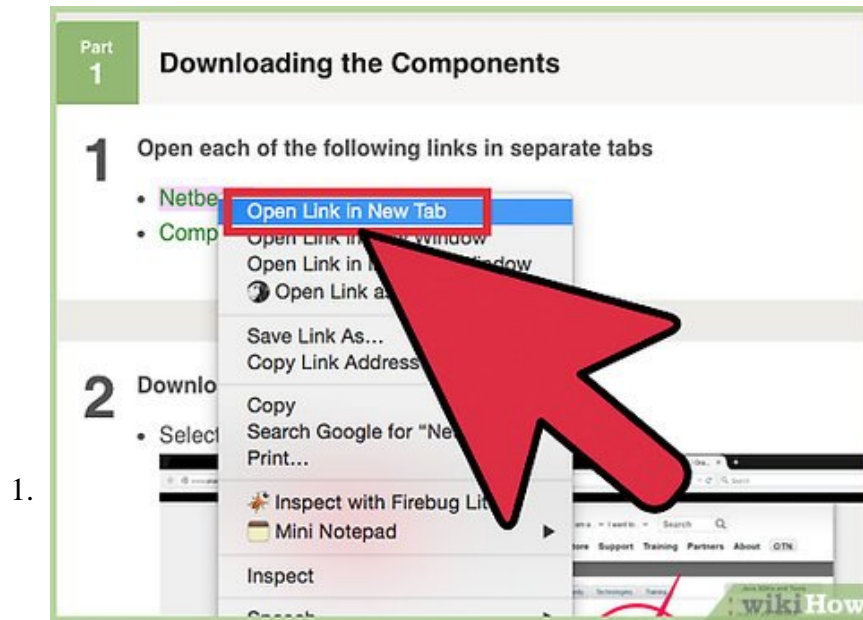


How to Run C/C++ Program in Netbeans on Windows

This tutorial will take you through the process of running a C/C++ program with the Netbeans IDE (Integrated Development Environment) using screenshots as tools for understanding and clarity. This article is written for use with Windows,...

Part 1 of 5:

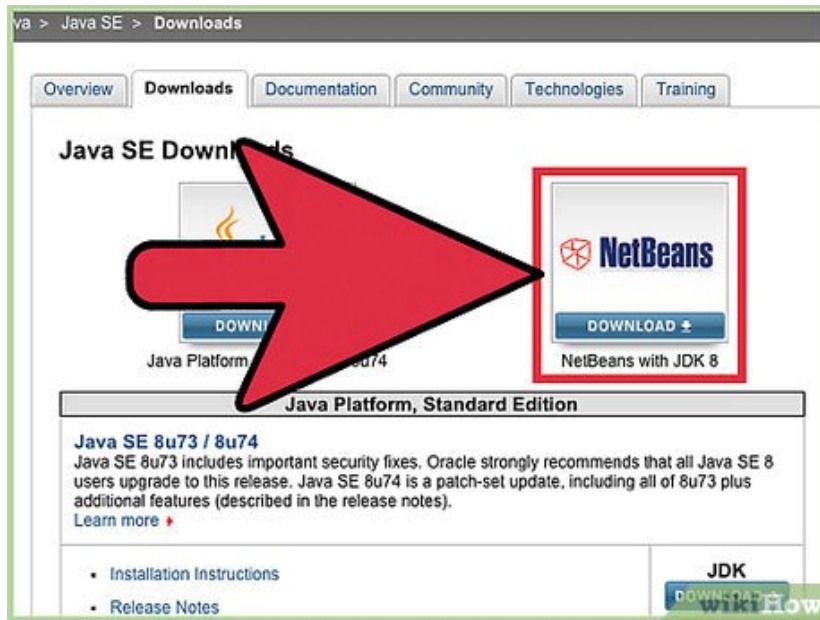
Downloading the Components



Open each of the following links in separate tabs.

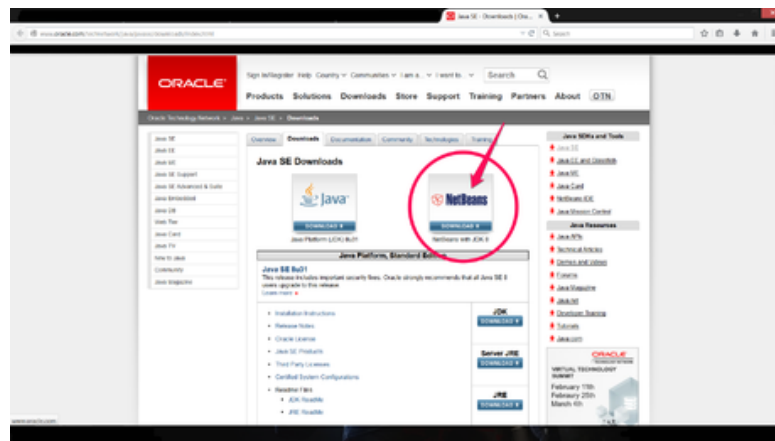
1. Netbeans
2. Compiler and Debugger

2.

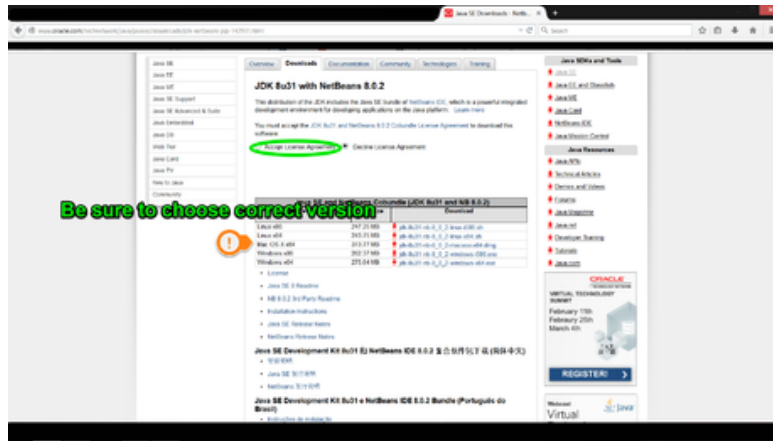


Download Netbeans

1. Select the Graphic on the right



2. Accept the user agreement, and then select the correct software from the list. Choose either the file ending in i586 for a 32-bit system or the file ending in x64 for a 64-bit system. Save to your Desktop.



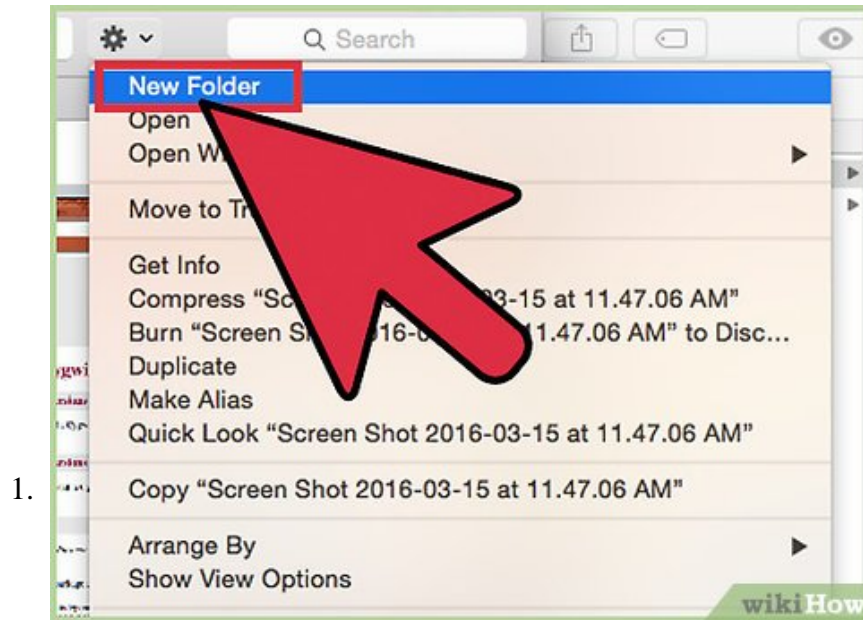
3. Download Compiler and Debugger

1. Select the Correct File for your System and Save it to your desktop



Part 2 of 5:

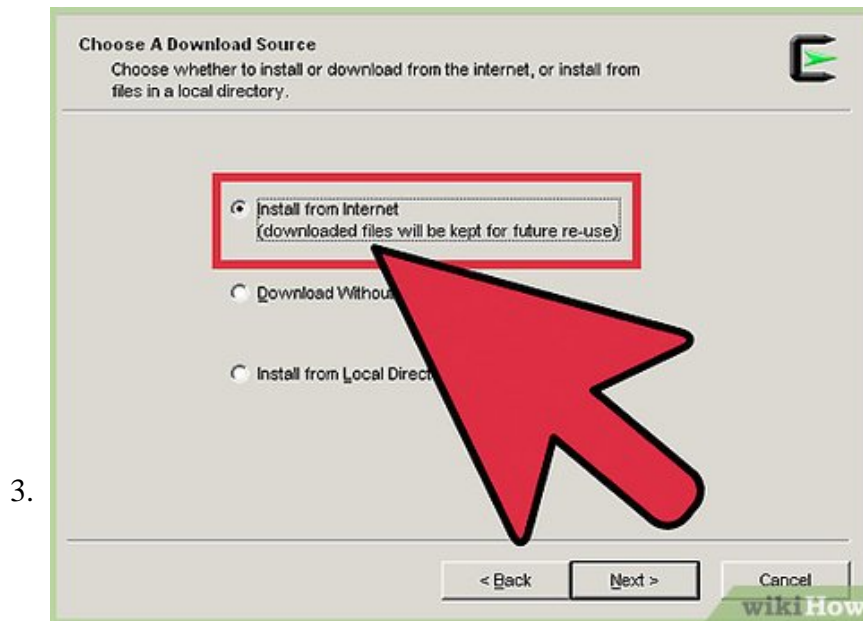
Installing Cygwin Compiler and Debugger



Create a Folder on the Desktop and name it Cygwin

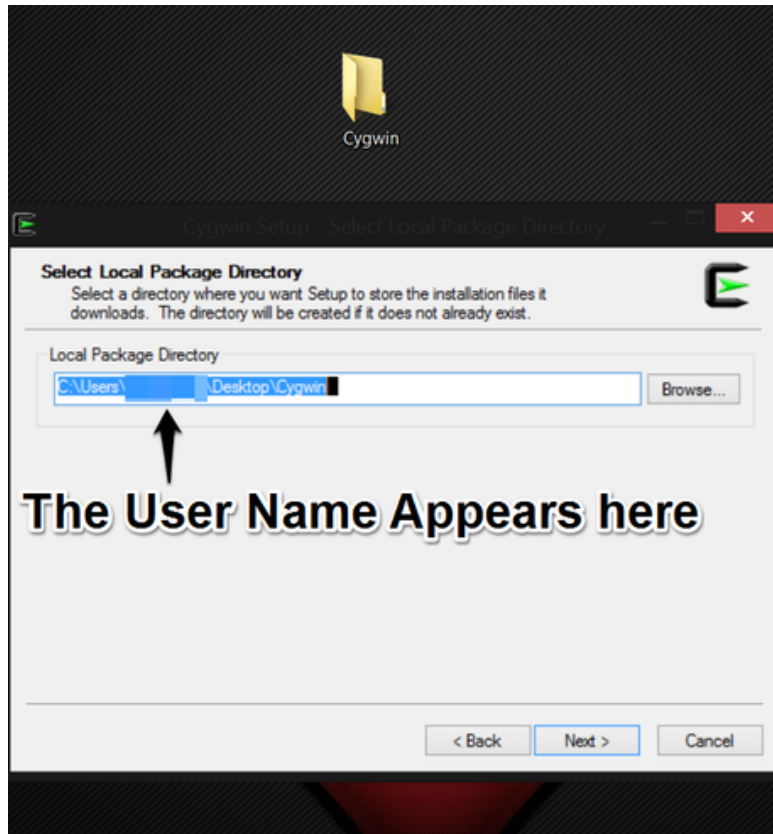
2. Open the Cygwin Installer

1. Click the "Next" button on the window that comes up



Click Install from Internet, Click Next, then Click Next on the Second window

1. Make sure on the Third Window that the path is setup to the desktop folder



4. Select a Download Site and click Next

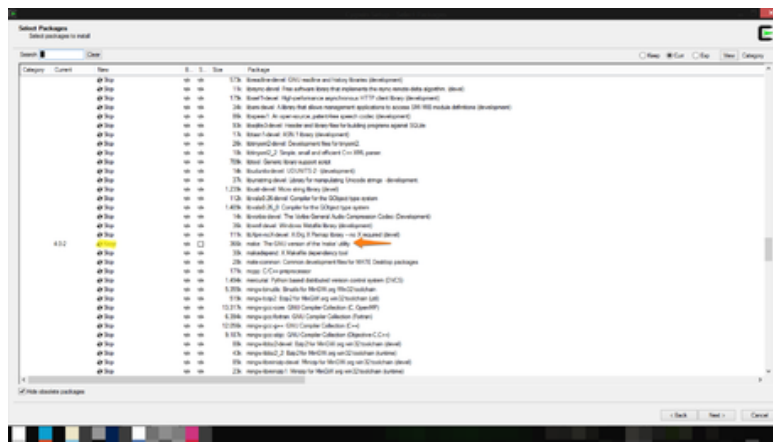
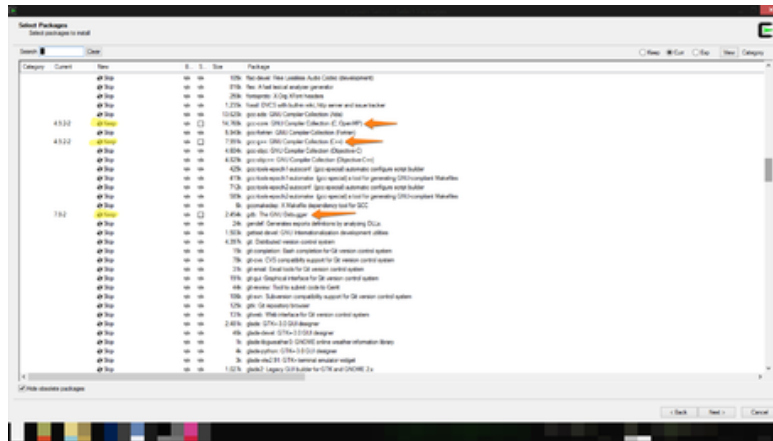
1. Really does not matter what site is chosen, however download speed may be affected

5. Install Compiler and Debugger

1. On the Window that pops-up select the '+' next to Devel



2. Find the files called gcc-core, gcc-g++, gdb: GNU Debugger, and 'make', and click the 'Skip' button to the left ONCE.



3. Click Next

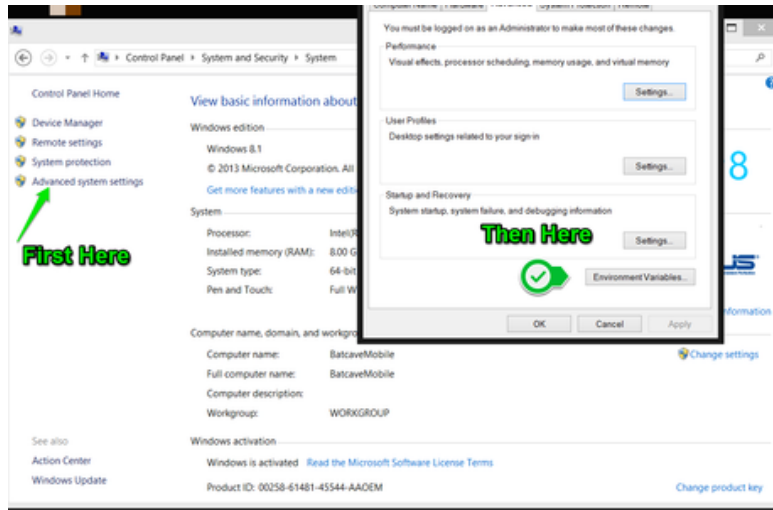
4. It will install the parts and then ask if you want shortcuts, you do not need these

6. Create the Cygwin Path

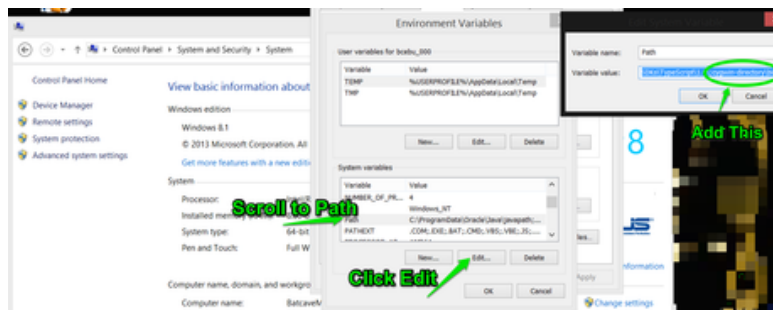
1. Open your control panel and select "System and Security", then select "System"

2. Click Advanced System Settings

3. Near the bottom of the new window there will be a button called "Environmental Variables", select it

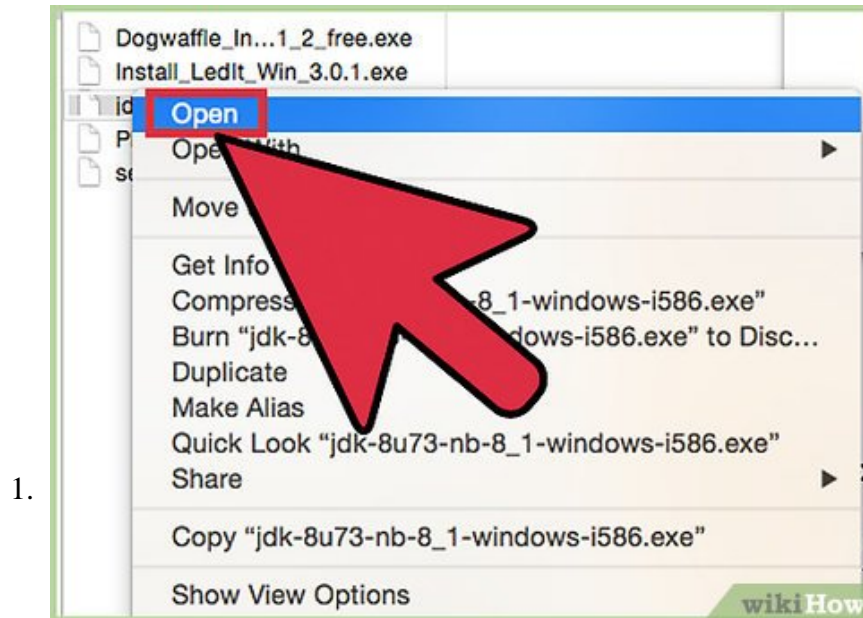


4. In the window that pops up scroll down to Path, select it and click Edit
5. At the end of the highlighted text (DON'T DELETE IT) add, with no spaces at all, ";cygwin-directorybin"



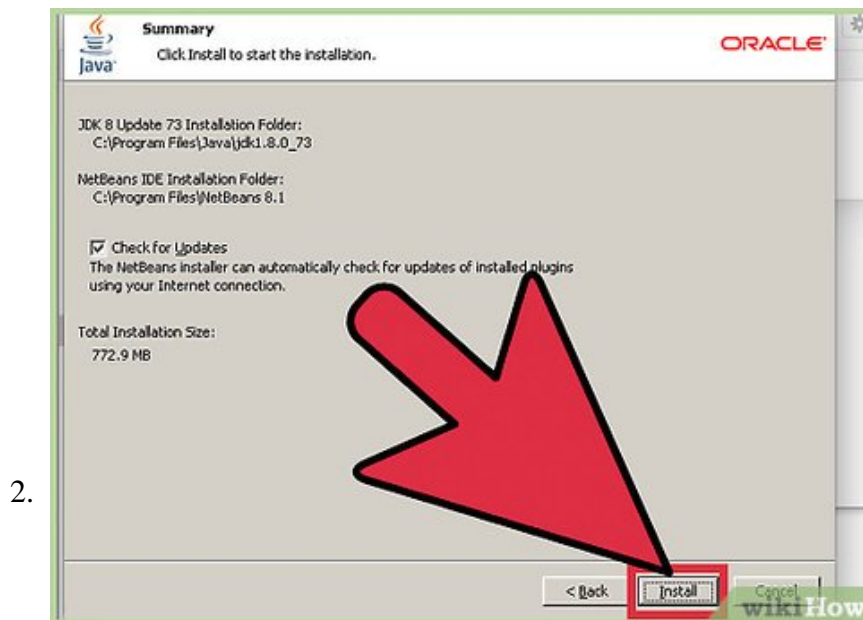
Part 3 of 5:

Installing Netbeans



Open the Netbeans Installer

1. Allow program to run, if asked for permission, and wait for installer to configure



When the installer Opens

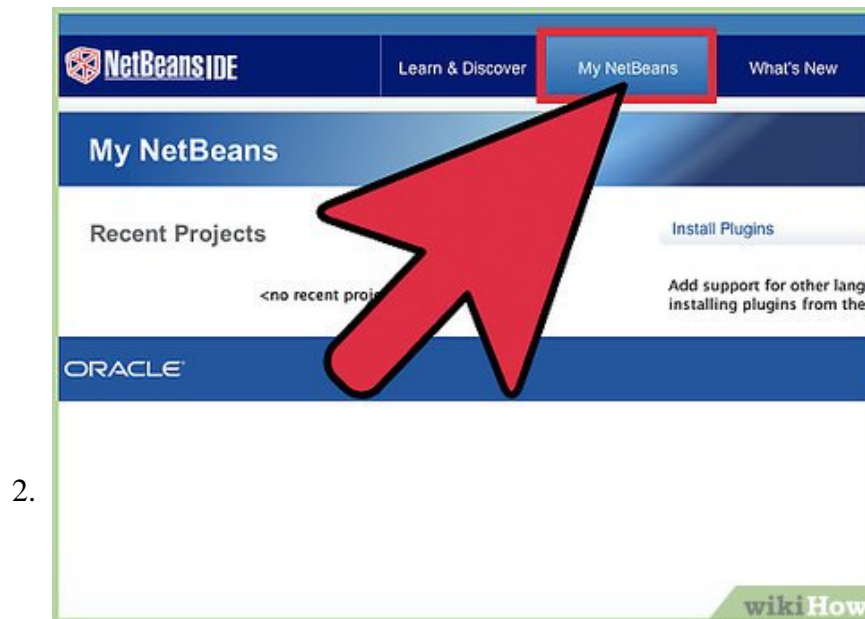
1. Click Next
2. Agree to the user agreement and select Next
3. Allow the installer to save and install the files on the next two windows to the default locations
4. Click Install
5. You can choose whether to send usage data or not

Part 4 of 5:

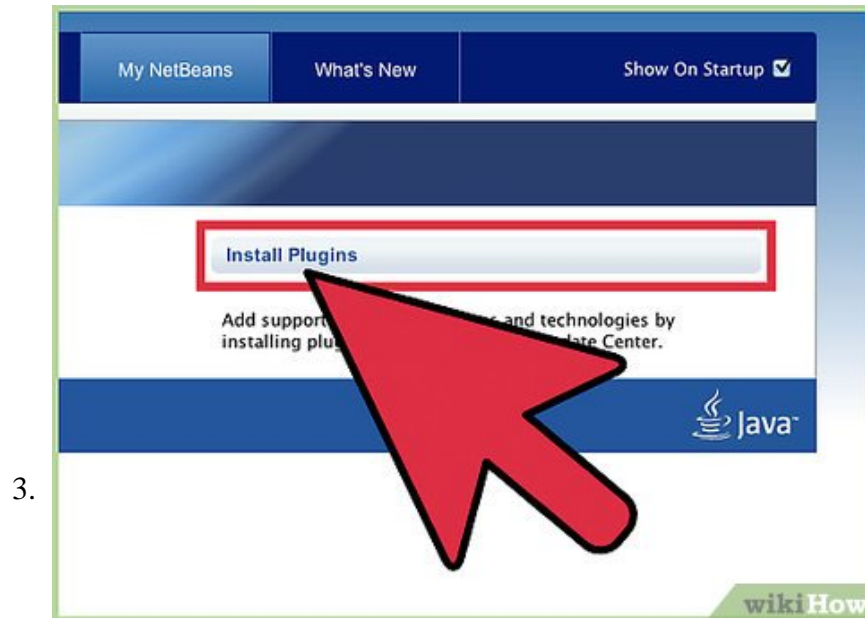
Running the Program



Open Netbeans

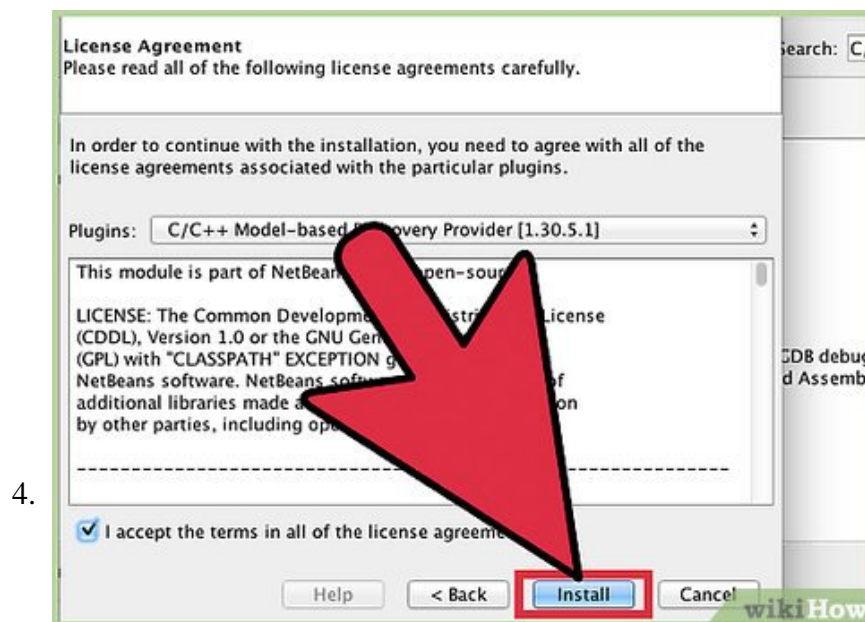


Click the "My Netbeans" tab



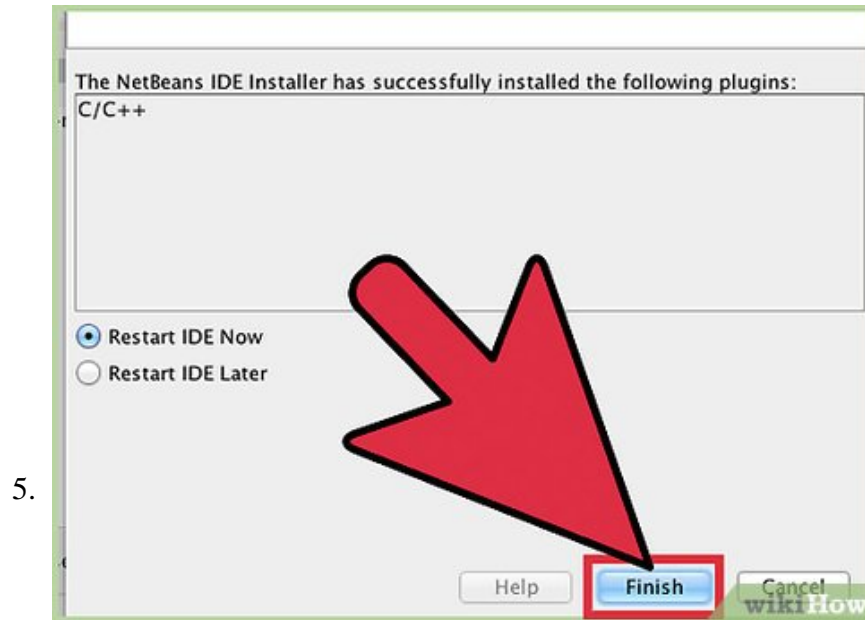
Click Install Plugins

1. In the search bar type C/C++
2. Select the result that has the same name and click it
3. Click Install

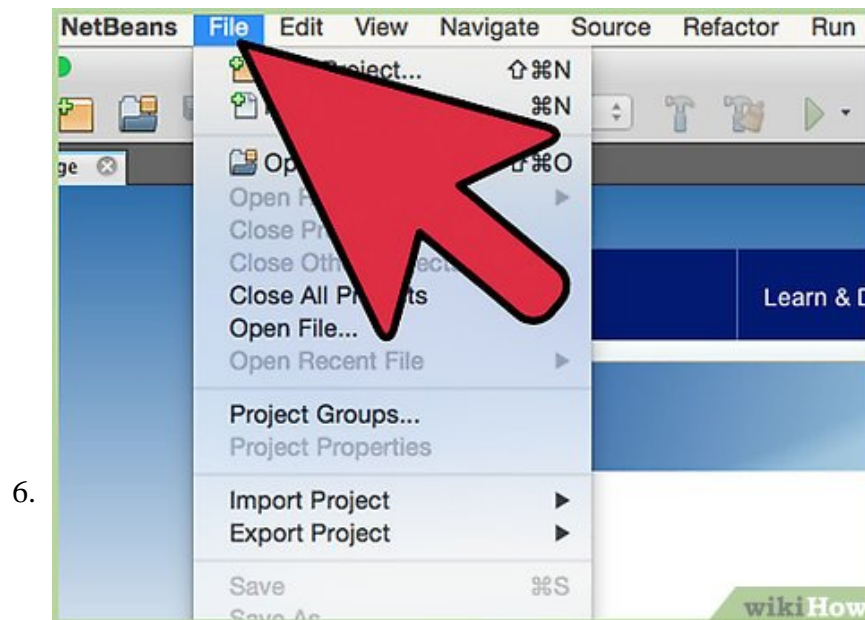


Click Next in the new window

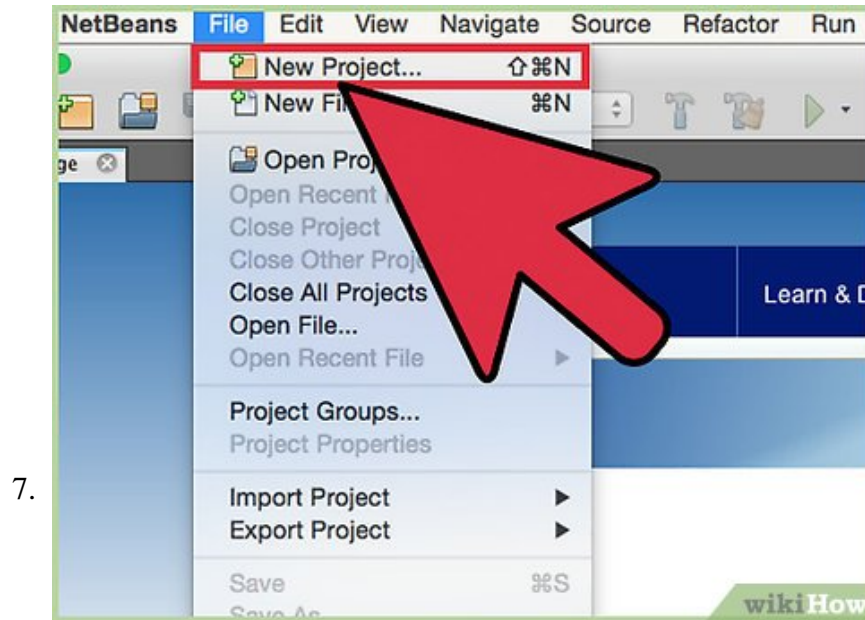
1. Accept the User Agreement and Click Install



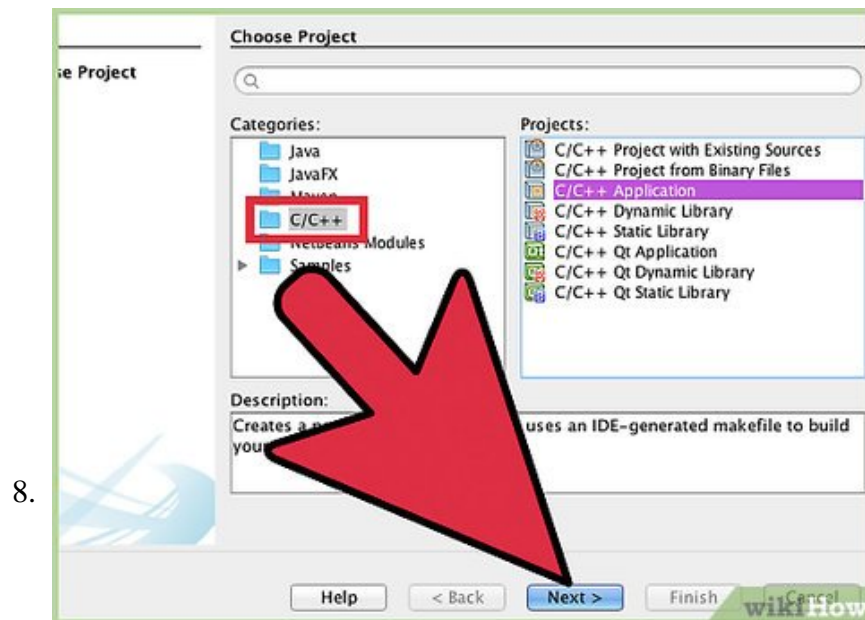
Exit the Plugin Window



Click File in the top left corner

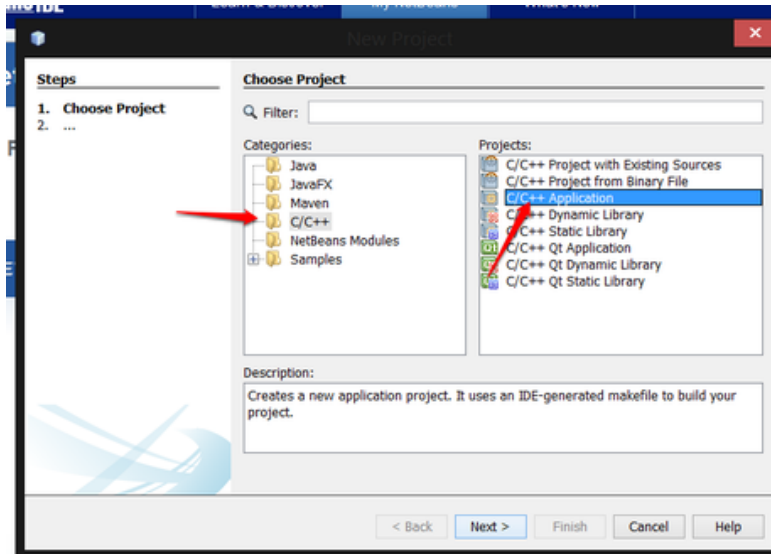


Click New Project

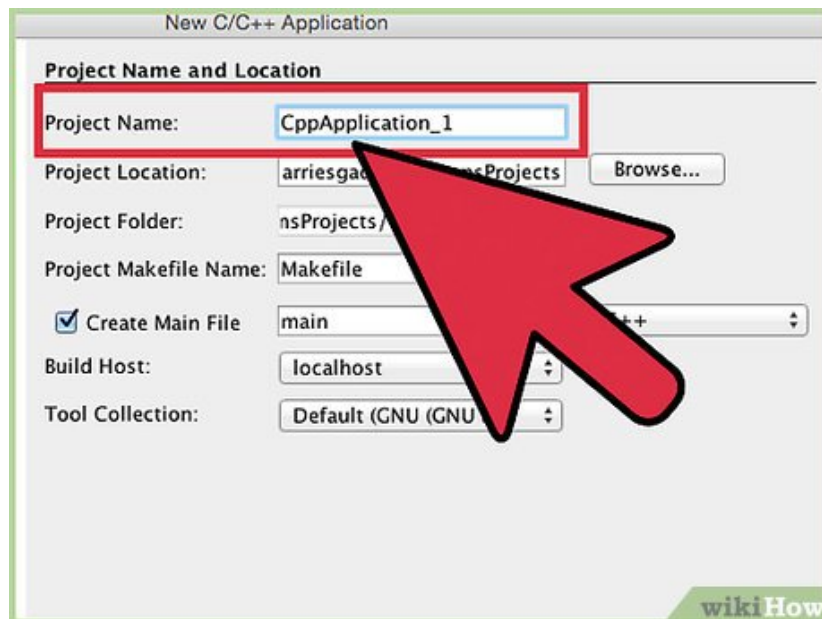


Select C/C++ in the new window

1. Select C++ Application on the right side



2. Select Next

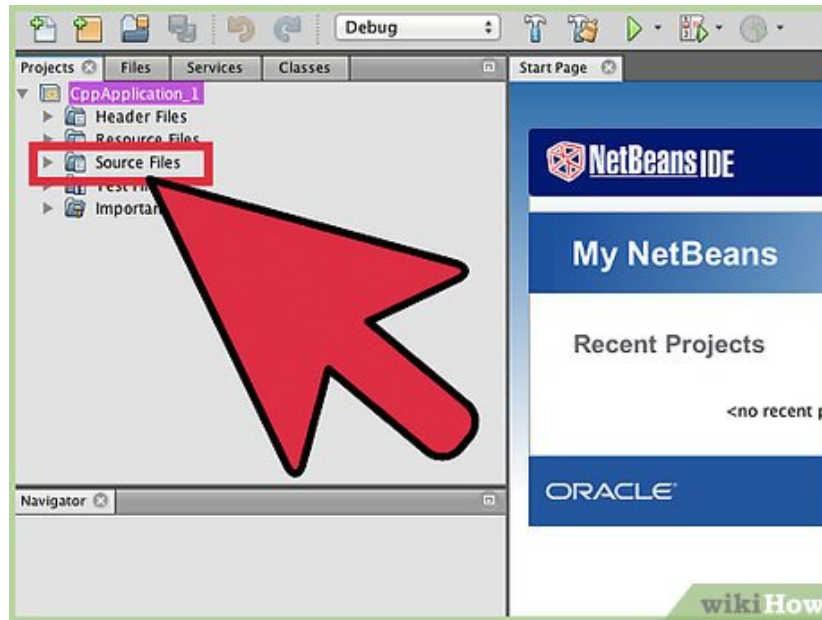


9.

Name the Project whatever you'd like, and make sure that the tool collection field has Cygwin in it

1. Click Finish

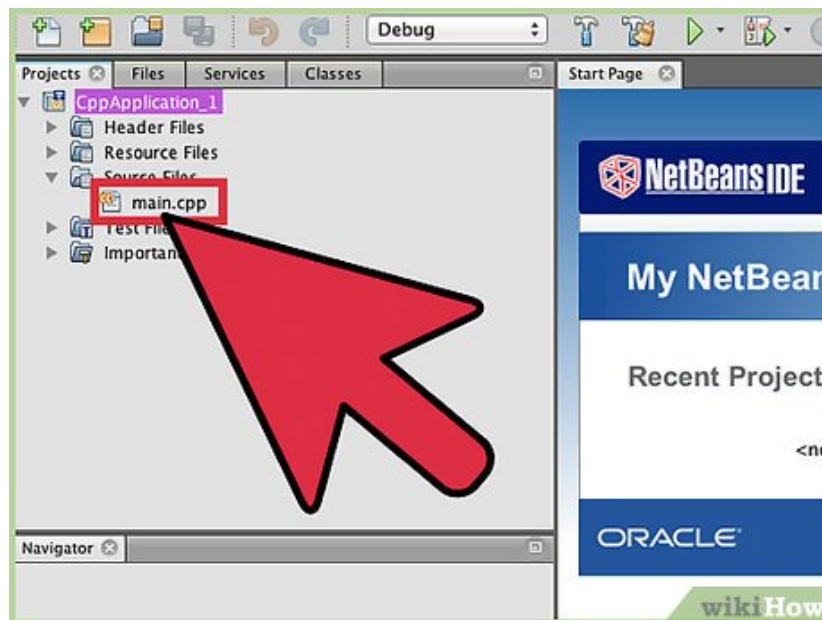
10.



Double-Click the Project on the left-side of the screen

1. Click the '+' next to Source Files

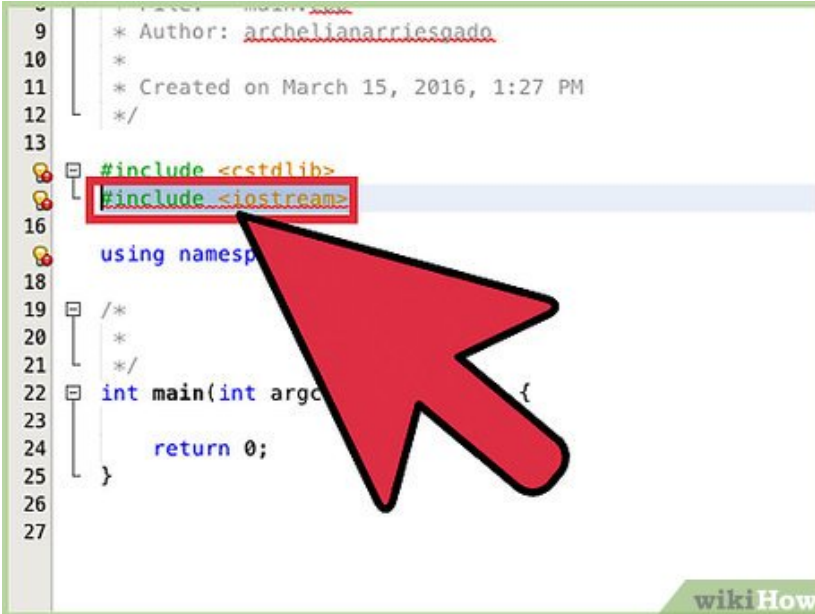
11.



Double-Click main.cpp

12.

```
9 | * Author: archelianarriesgado  
10 | *  
11 | * Created on March 15, 2016, 1:27 PM  
12 | */  
13 |  
14 | #include <cstdlib>  
15 | #include <iostream>  
16 |  
17 | using namespace std;  
18 |  
19 | /*  
20 | *  
21 | */  
22 | int main(int argc, char** argv) {  
23 |  
24 |     return 0;  
25 | }  
26 |  
27 |
```



Insert the phrase (No quotes) "#include " underneath the other include phrase

13.

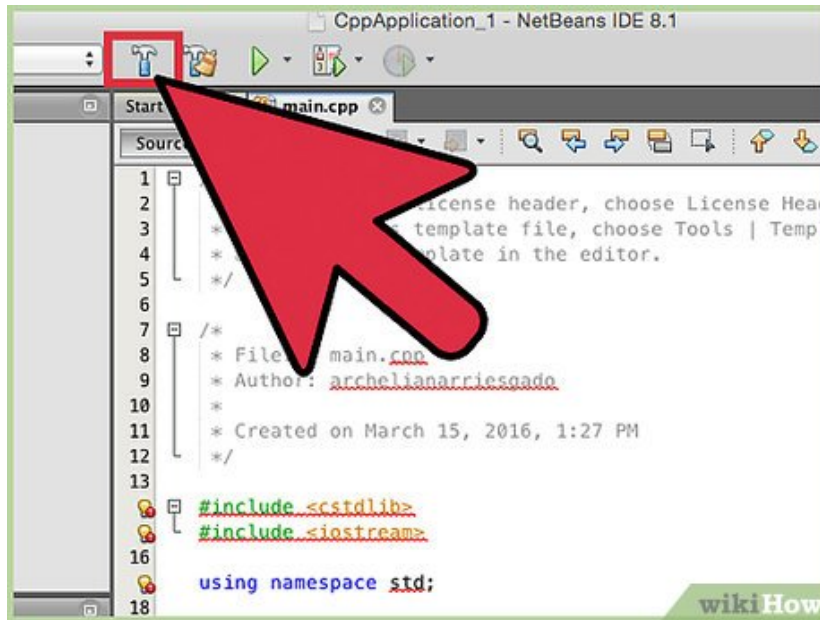
```
1 | #include <cstdlib>  
2 | #include <iostream>  
3 |  
4 | using namespace std;  
5 |  
6 | /*  
7 | *  
8 | */  
9 | int main(int argc, char** argv) {  
10 |     cout << "Hello World" << endl;  
11 |     return 0;  
12 | }
```



Insert any code inside the curly brackets of the main function

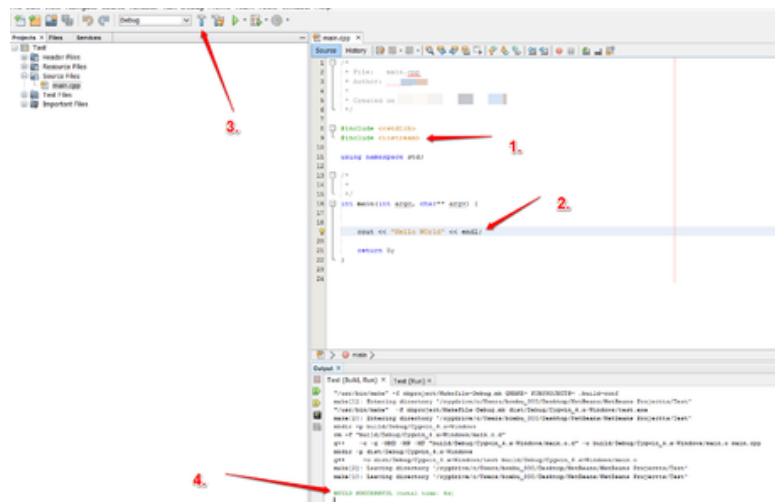
1. For example insert (no quotes) "cout "Hello World" endl;"

14.

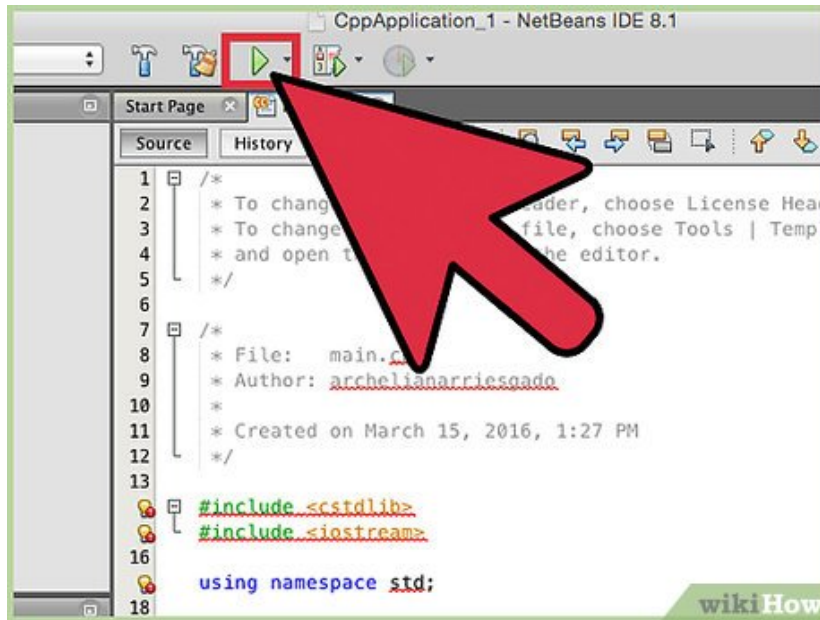


Click the hammer icon at the top to build the solution

1. If done correctly at the bottom in green, a message will appear that reads "Build Successful"

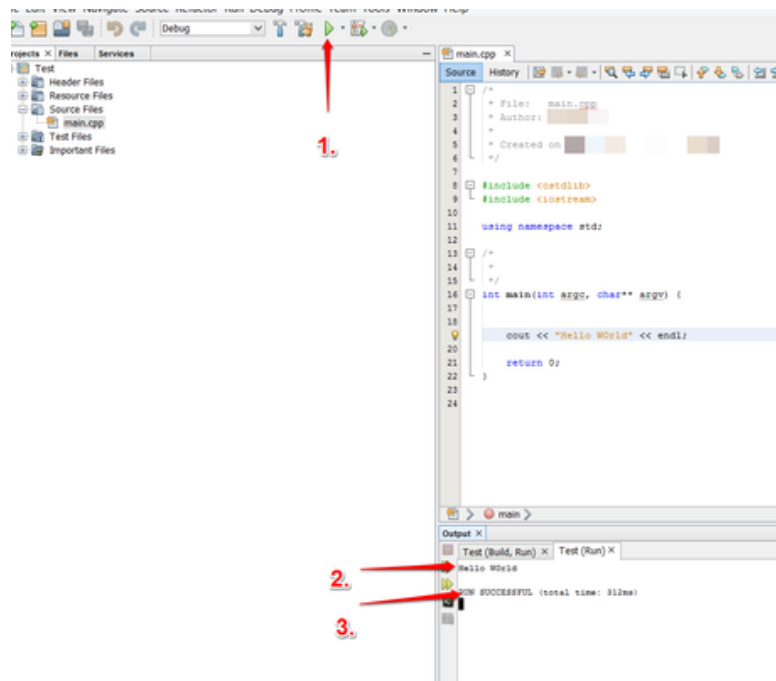


15.



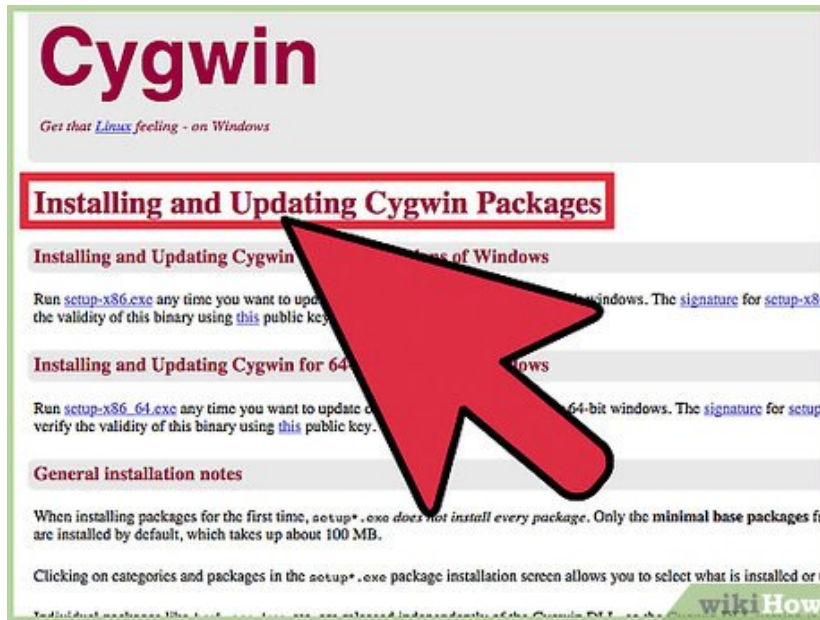
Run the code by clicking the play button

1. At the bottom your output should be there, followed by a message that reads "Run Successful" with total runtime of your program



Part 5 of 5:

Troubleshooting



1. Be sure to install the Cygwin compiler and debugger first. It allows the IDE to auto-find it in your system
2. If Cygwin does not appear in the tool collection field, be sure that its path is added to the Environment Variables
3. If the project does not build or run correctly, be sure to look carefully at the final screenshot and make sure that all parts in the text editor look the same

You finished reading the article "**How to Run C/C++ Program in Netbeans on Windows**" edited by the [TipsMake](#) team. We hope this article has provided you with many useful tech tips and tricks. You can search for similar articles on tips and guides. Thank you for reading and for following us regularly.