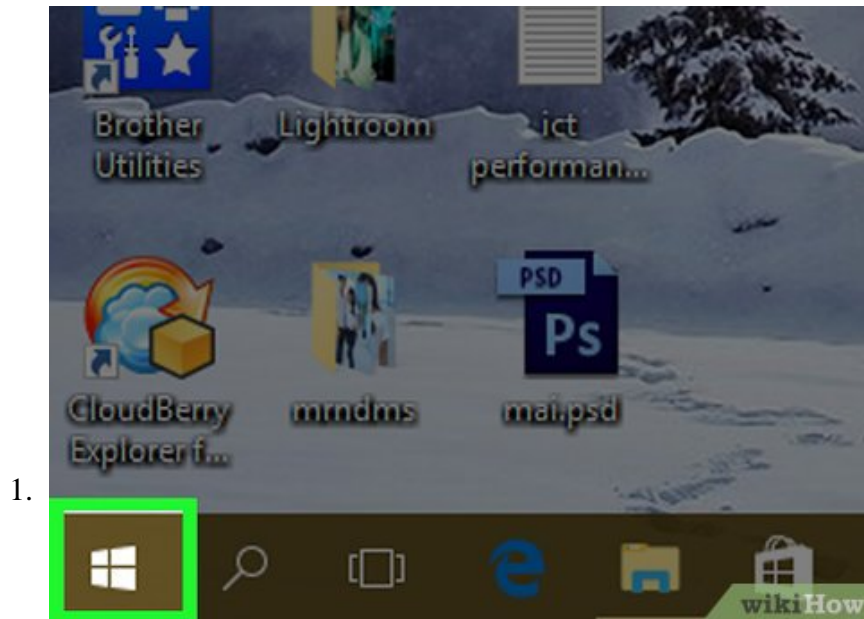


# How to Run a Program on Command Prompt

This wikiHow teaches you how to start a program on your Windows computer from within the Command Prompt app. You can only run programs that are installed in Windows-created folders (e.g., the Desktop), though you can add a program's folder...

Method 1 of 2:

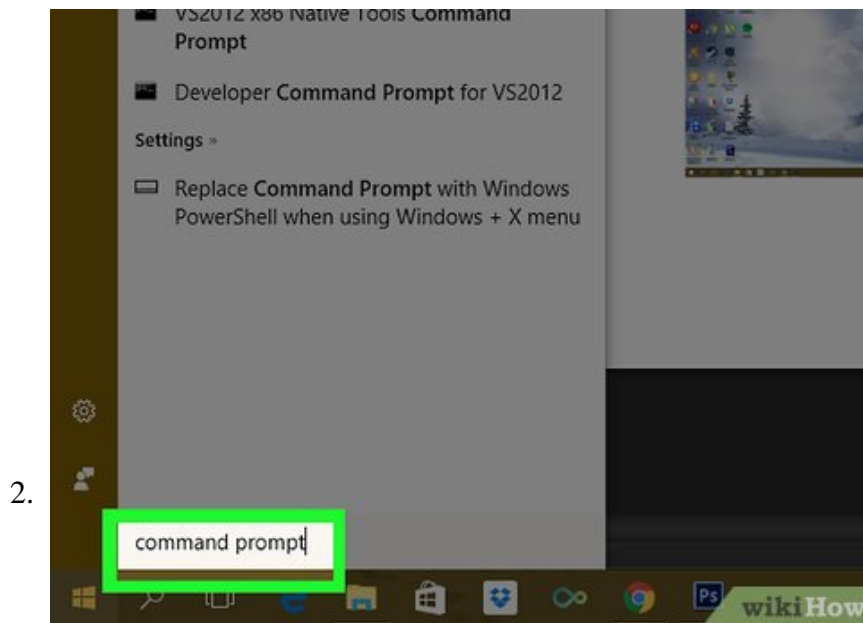
## Opening Basic Programs



Open Start

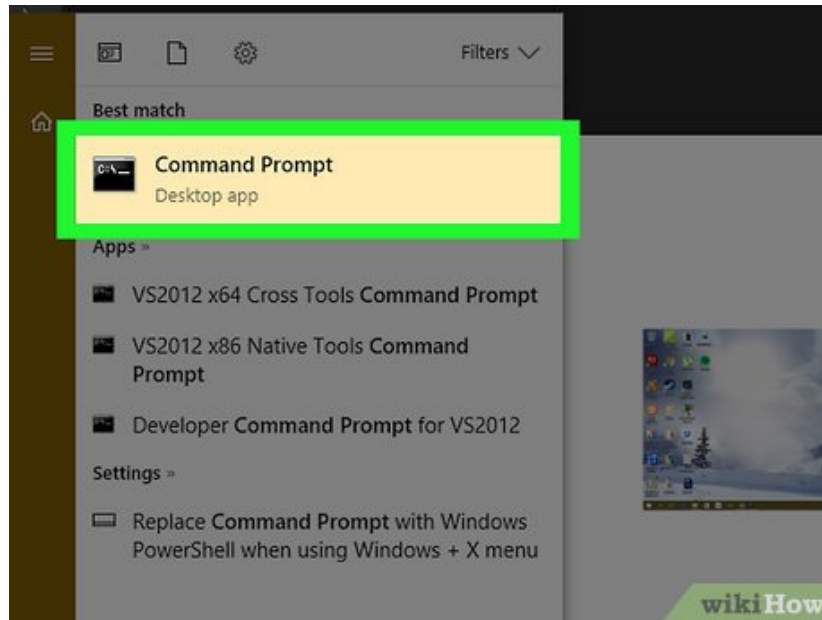


- . Click the Windows logo in the bottom-left corner of the screen, or find the Windows logo key on your computer's keyboard and press it.
1. If you're using Windows 8, instead place your mouse cursor in the top-right side of the screen and then click the magnifying glass icon in the pop-out window.



Type **command prompt** into Start. Doing so will search your computer for the Command Prompt program.

3.

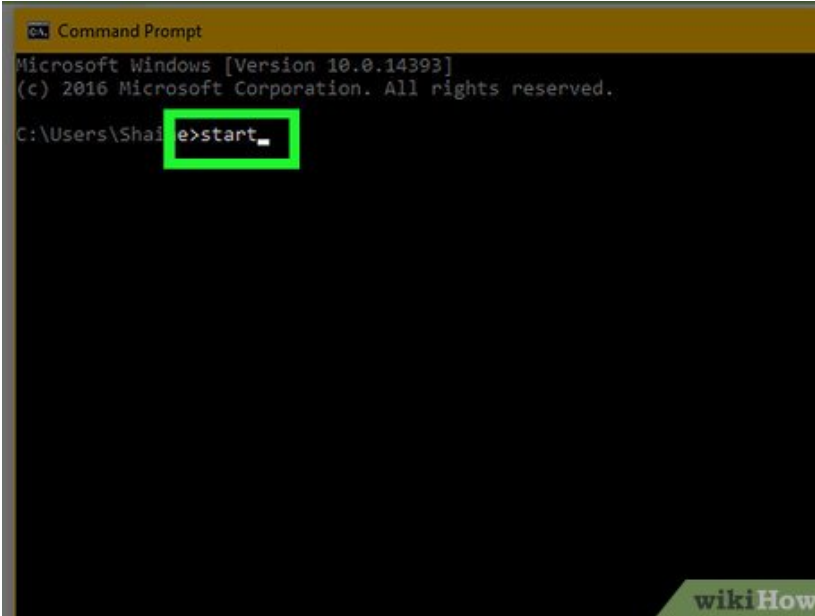


**Click Command Prompt**



- . It's the black box at the top of the Start window. Command Prompt will open.
  1. If you're using a computer with restricted privileges, you may not be able to open Command Prompt.

4.

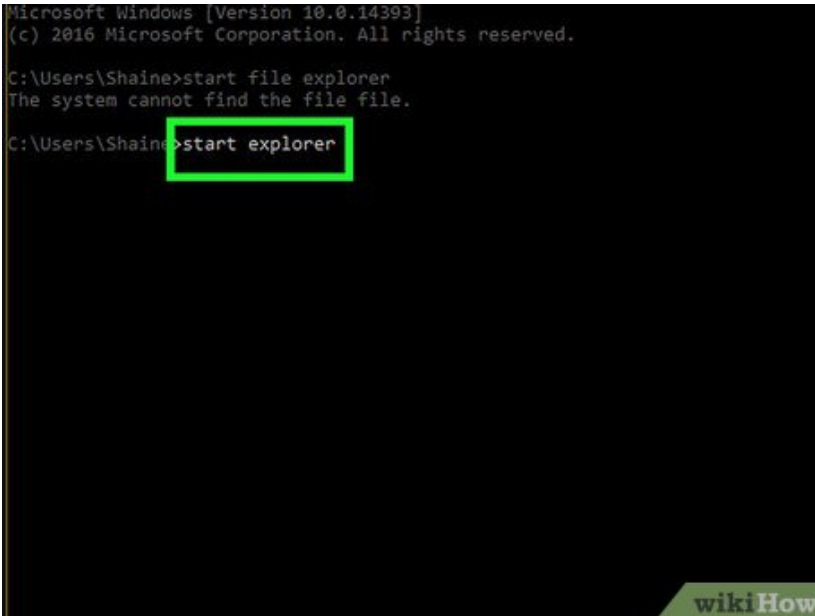


```
Command Prompt
Microsoft Windows [Version 10.0.14393]
(c) 2016 Microsoft Corporation. All rights reserved.
C:\Users\Shaine>start
```

A screenshot of a Windows Command Prompt window. The title bar reads "Command Prompt". The text inside shows the Windows version and copyright information. The current directory is "C:\Users\Shaine". The command "start" has been typed and is highlighted with a green box.

Type `start` into Command Prompt. Make sure you place a space after `start`.

5.

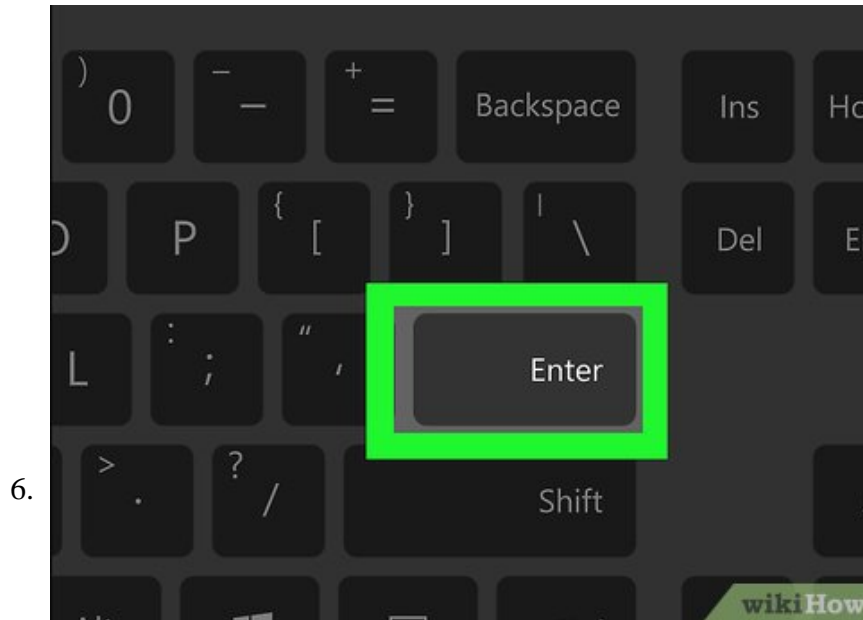


```
Microsoft Windows [Version 10.0.14393]
(c) 2016 Microsoft Corporation. All rights reserved.
C:\Users\Shaine>start file explorer
The system cannot find the file file.
C:\Users\Shaine>start explorer
```

A screenshot of a Windows Command Prompt window. The title bar reads "Command Prompt". The text inside shows the Windows version and copyright information. The current directory is "C:\Users\Shaine". The command "start file explorer" has been typed and resulted in an error message: "The system cannot find the file file." The command "start explorer" has been typed and is highlighted with a green box.

Type the program's name into Command Prompt. This must be the file's system name, not its shortcut name (for example, Command Prompt's system name is `cmd`). Common program names include the following:

1. **File Explorer** - `explorer`
2. **Calculator** - `calc`
3. **Notepad** - `notepad`
4. **Character Map** - `charmap`
5. **Paint** - `mspaint`
6. **Command Prompt (new window)** - `cmd`
7. **Windows Media Player** - `wmplayer`
8. **Task Manager** - `taskmgr`

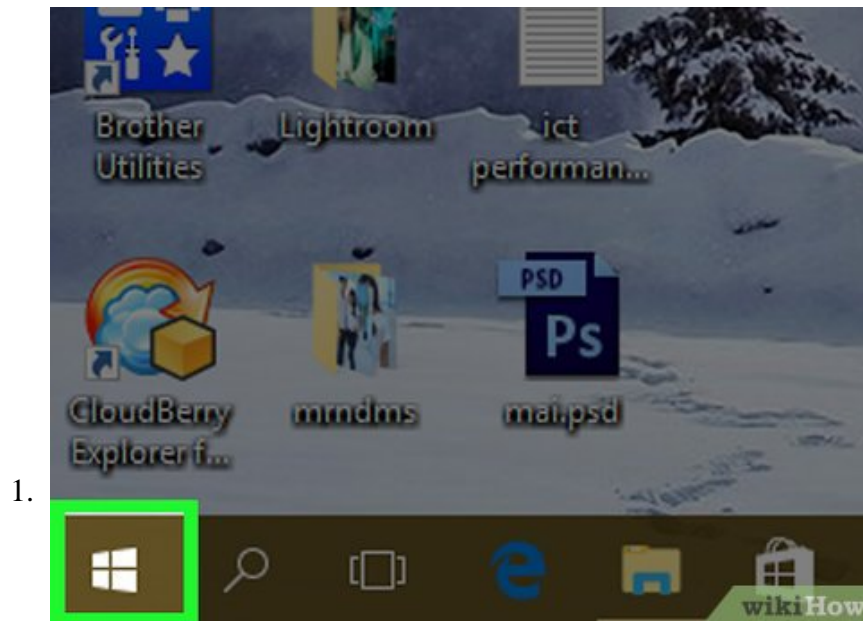


**Press ? Enter**. Once your command resembles `start program_name`, doing so will run the "start" command for your selected program. You should see the program open within a few seconds of entering the command.

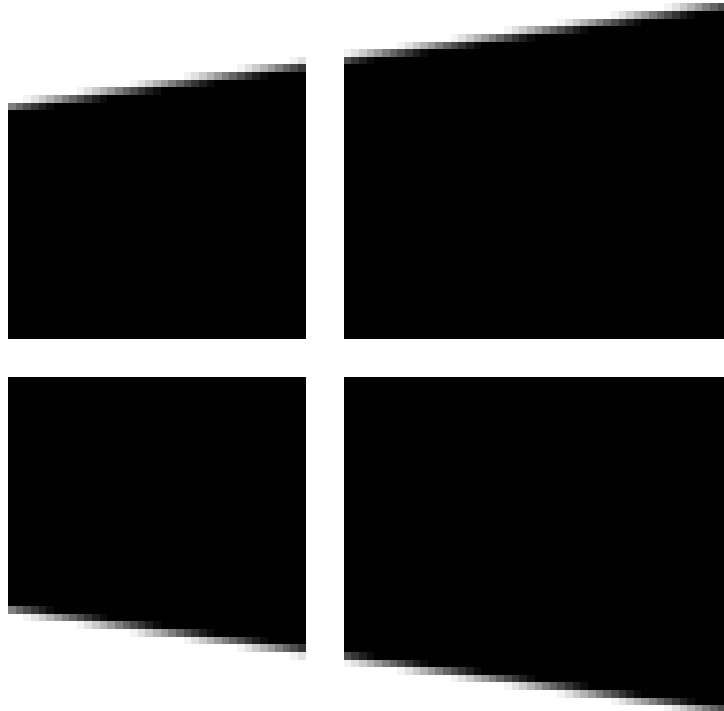
1. If your selected program won't run, it is most likely in a folder that isn't in the Command Prompt's search path. You can add the program's folder to the Command Prompt path to fix this problem.

Method 2 of 2:

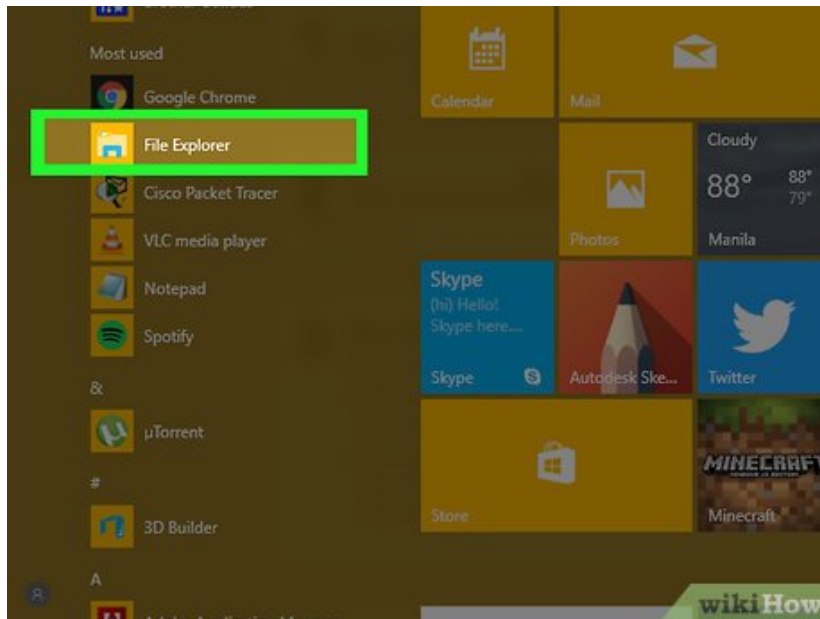
## Opening Specific Programs



**Open Start**

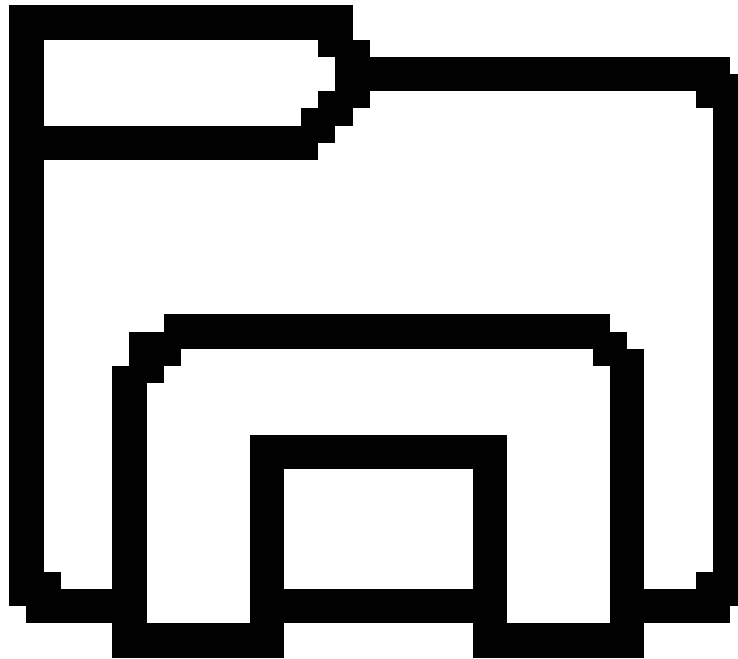


. Click the Windows logo in the bottom-left corner of the screen. You can also press the Windows key on your computer's keyboard.

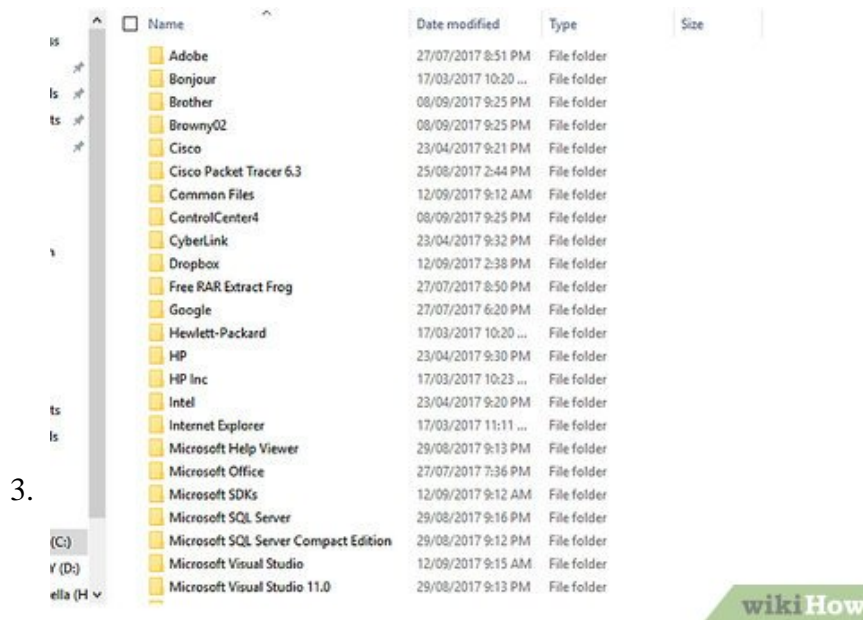


2.

**Open File Explorer**

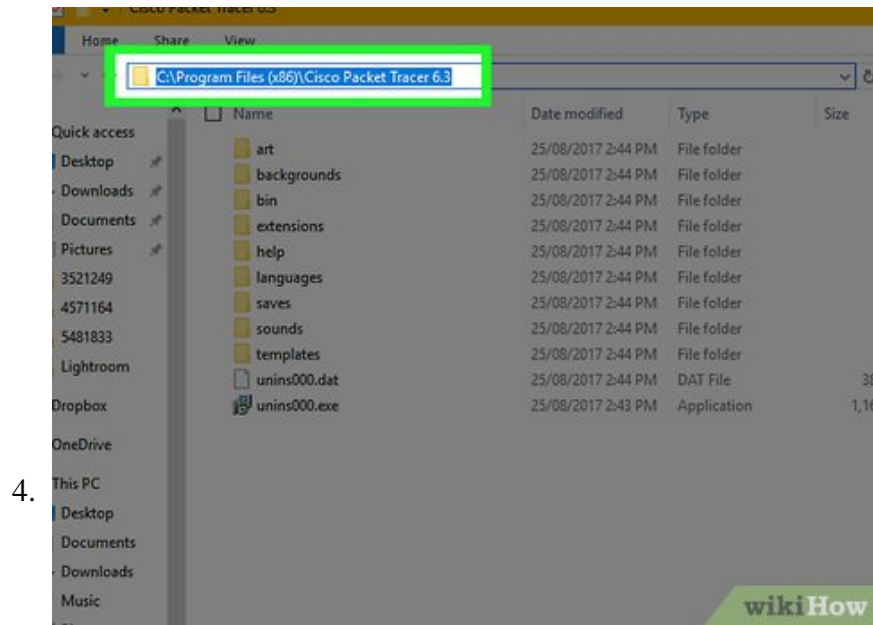


. Click the folder-shaped icon in the lower-left side of the Start window.

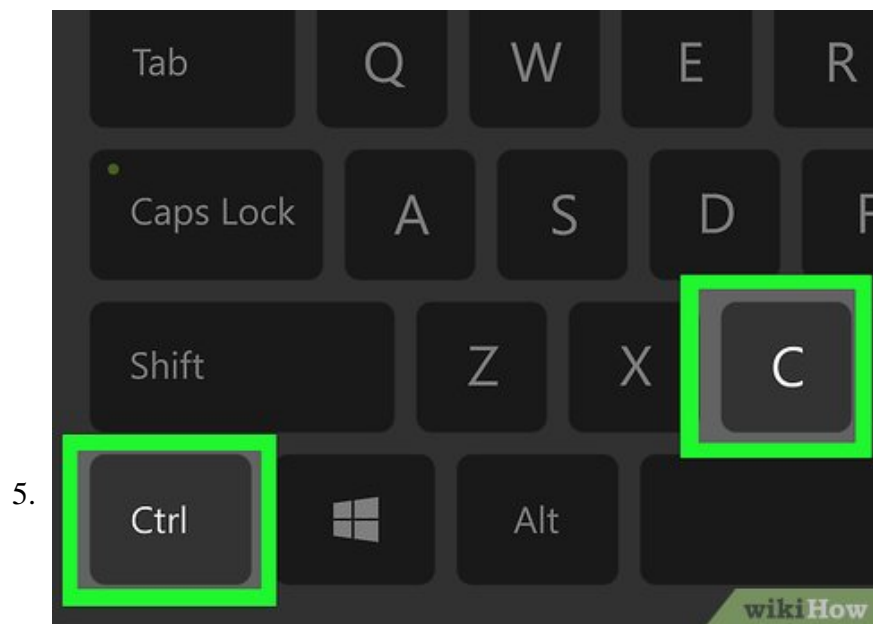


**Open the folder your program is in.** Navigate to the folder that has the program you want to open by clicking on any folders needed to get to it.

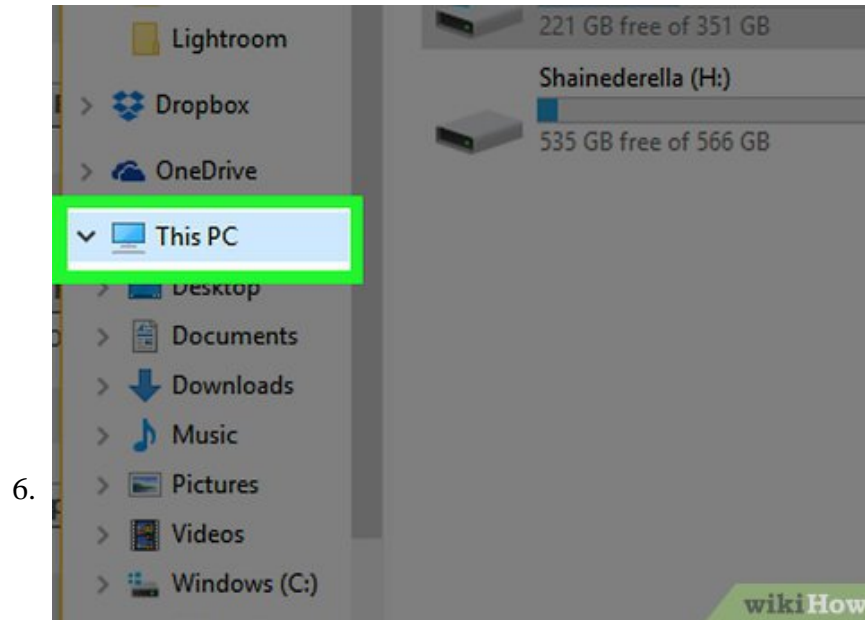
1. When the icon for the program you want to open in Command Prompt displays in the middle of the File Explorer window, you're in the correct folder.
2. If you don't know the location of the program, many programs are often located in the "Program Files" folder on the hard drive, or you can search for it in the search bar at the top.



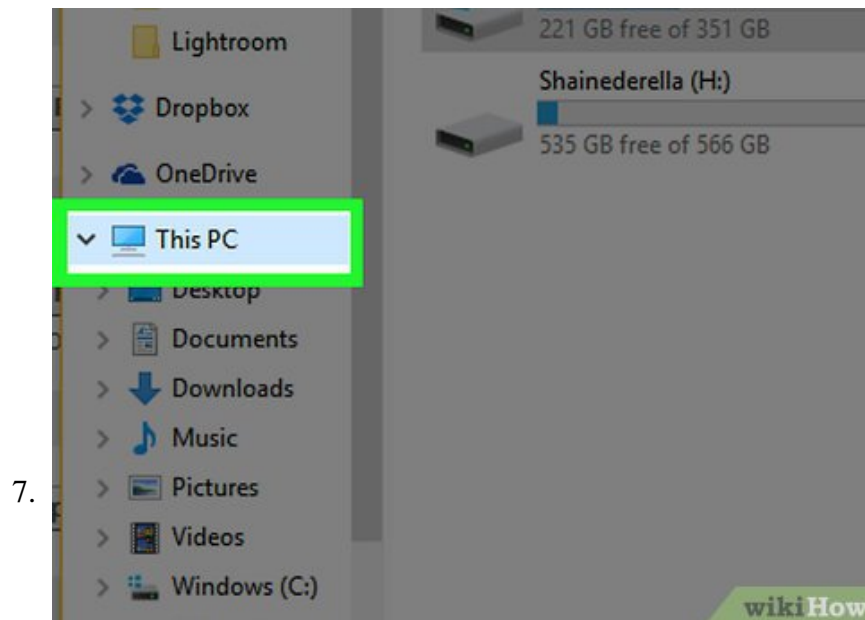
**Select the program's folder's path.** Click the right side of the address bar that's at the top of the File Explorer window. You should see a blue box highlight the address bar's contents.



**Copy the path.** Press `Ctrl` and `C` at the same time.

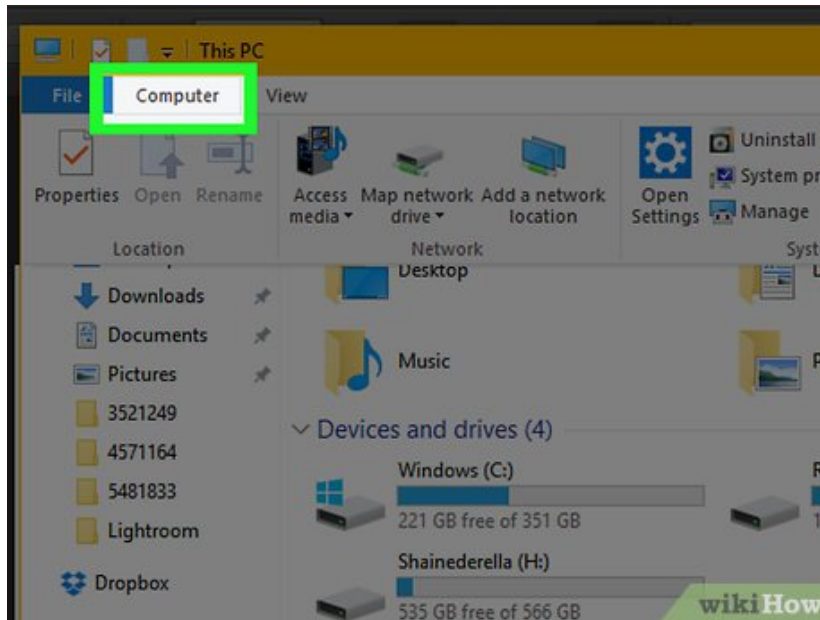


Click **This PC**. This folder is on the left side of the File Explorer window.



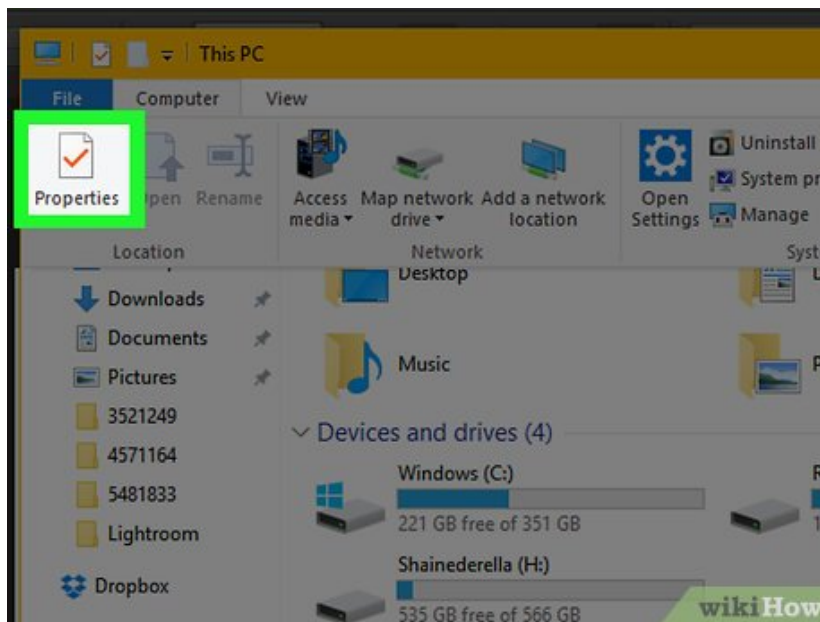
Click **This PC** again. Doing so will de-select any folders in the **This PC** folder, which will allow you to open the **This PC** folder's properties.

8.



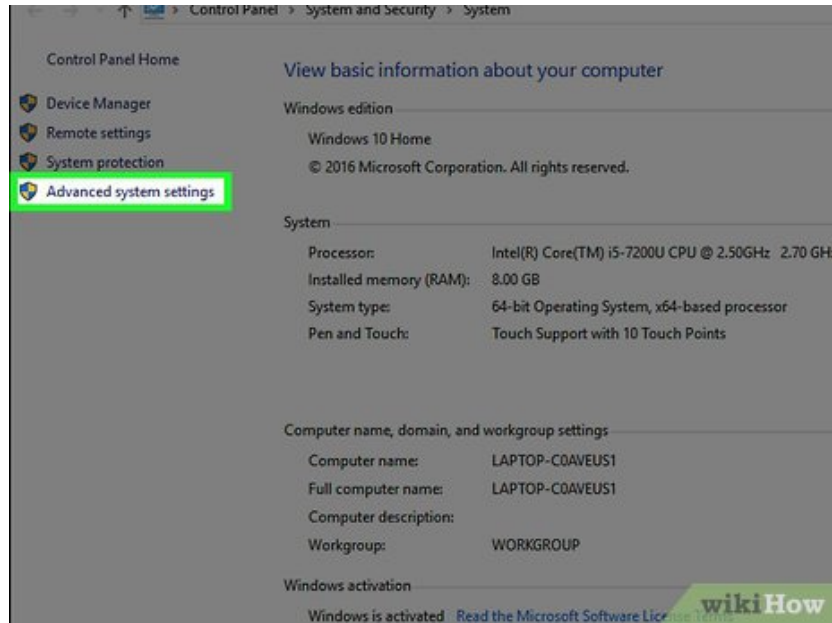
Click **Computer**. It's a tab in the upper-left side of the page. A toolbar will appear.

9.



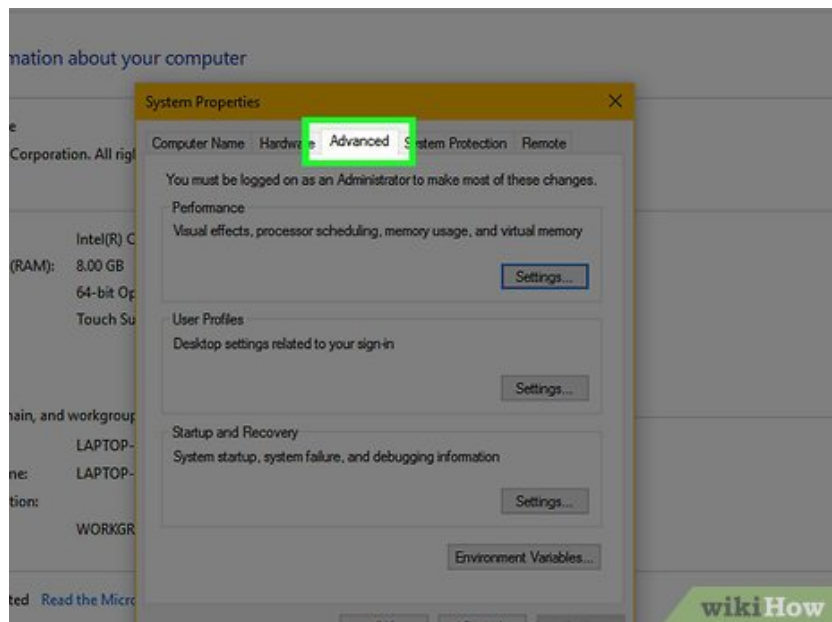
Click **Properties**. This icon resembles a white box with a red checkmark in it. Clicking it prompts a pop-up window to appear.

10.



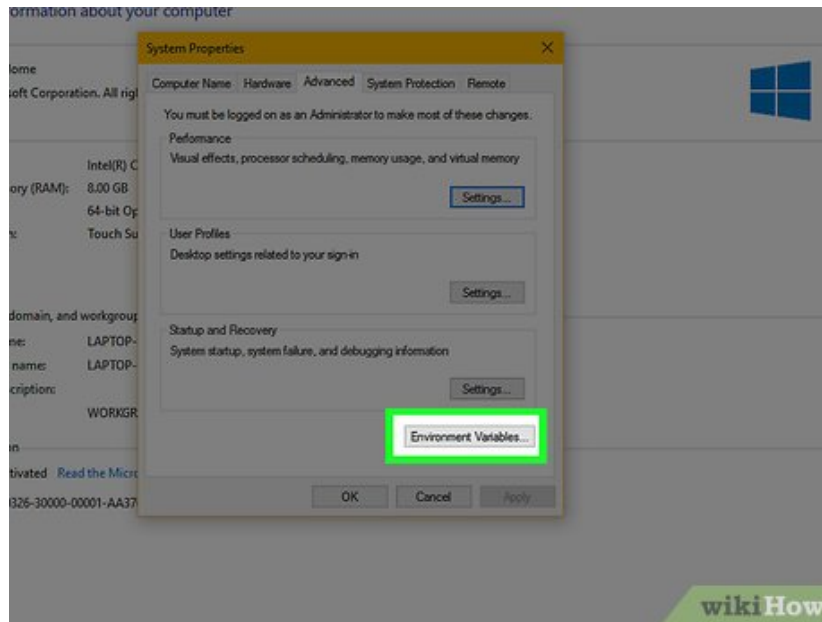
Click **Advanced system settings**. It's a link in the upper-left side of the window. Doing so opens another pop-up window.

11.



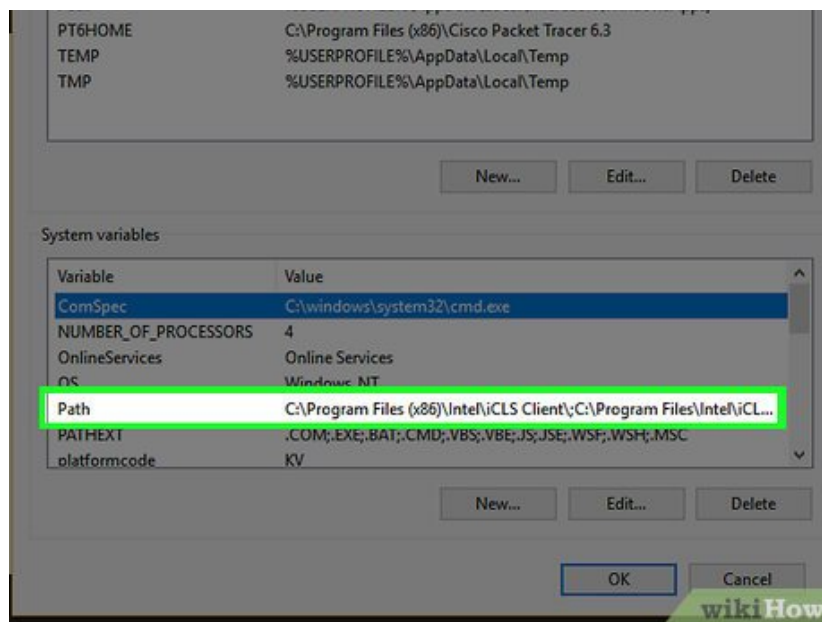
Click the **Advanced** tab. It's at the top of the window.

12.



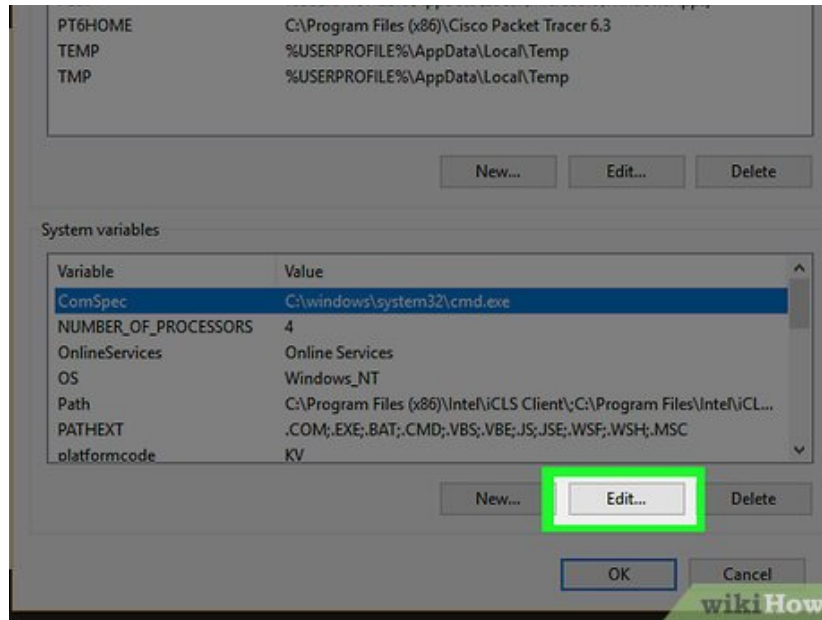
Click **Environment Variables...**. This option is at the bottom of the window. Another window will appear.

13.



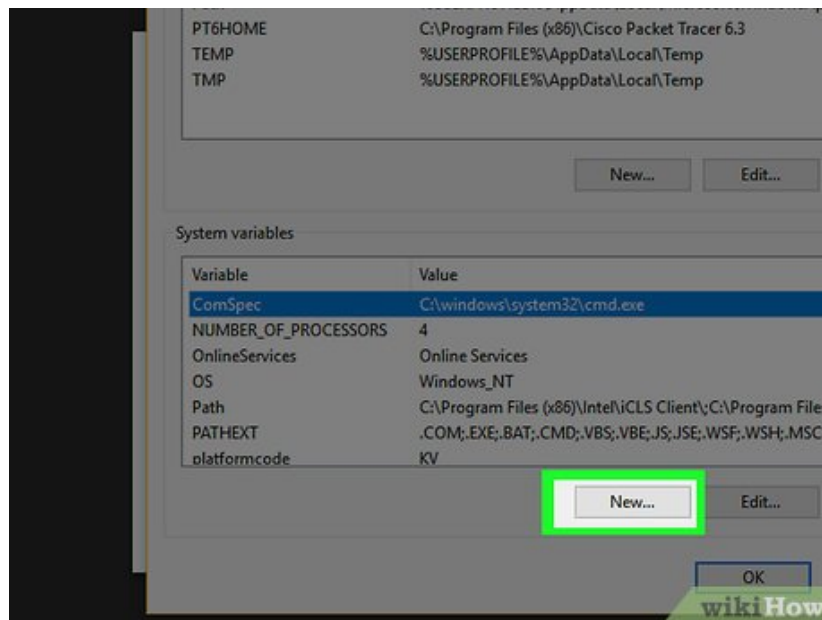
Click **Path**. It's in the "System variables" window near the bottom of the page.

14.

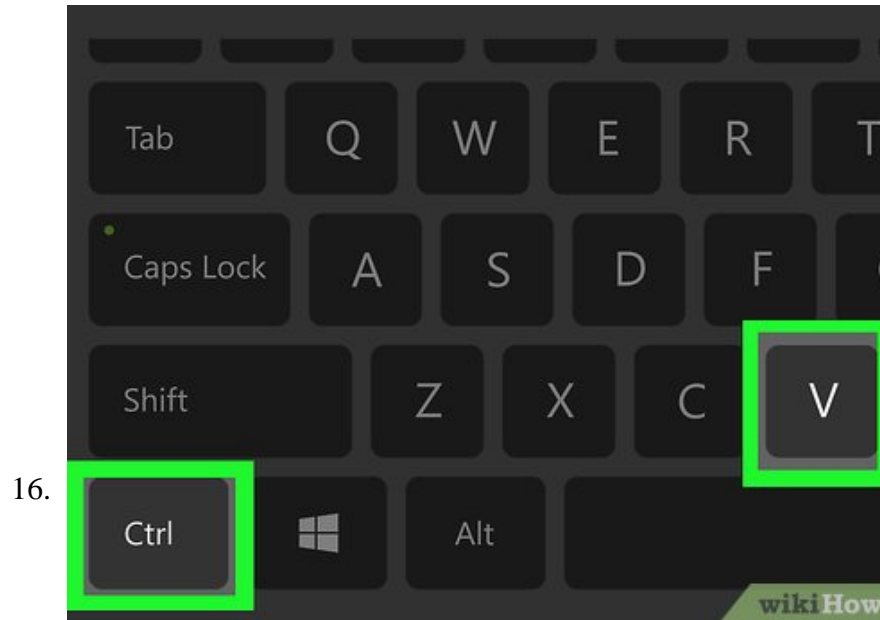


Click **Edit...**. This option is at the bottom of the page.

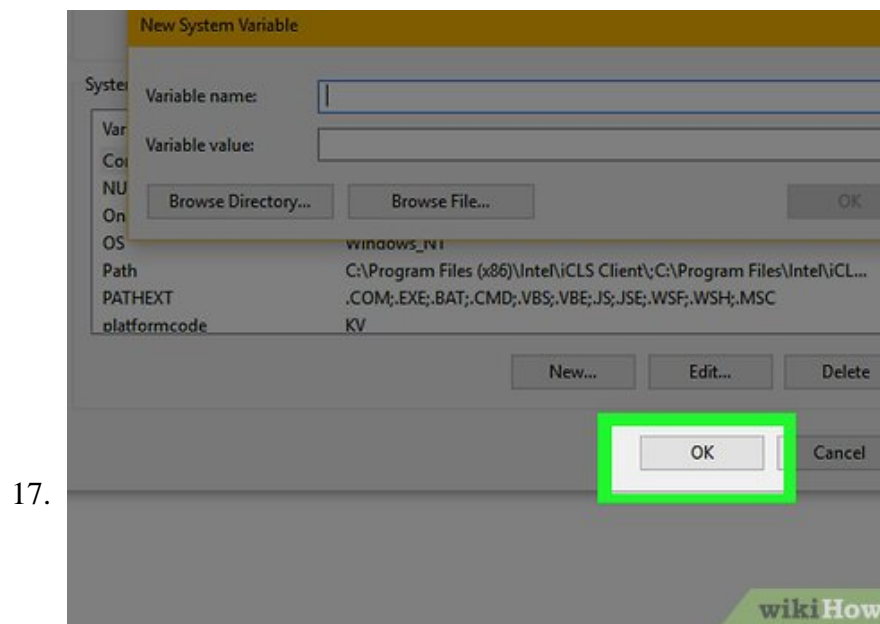
15.



Click **New**. It's in the top-right side of the Edit page.

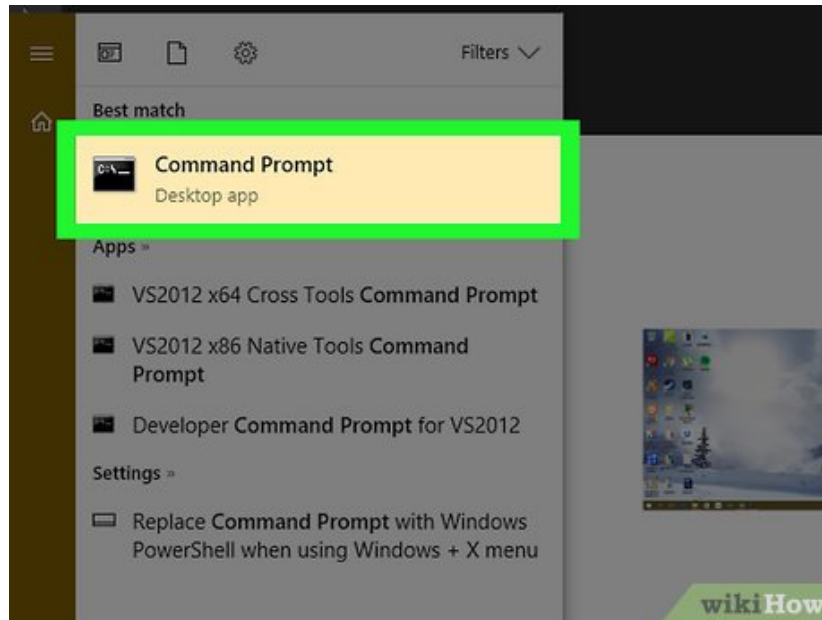


**Paste in your program's path.** Press **Ctrl** and **V** at the same time to paste the path into the Path window.



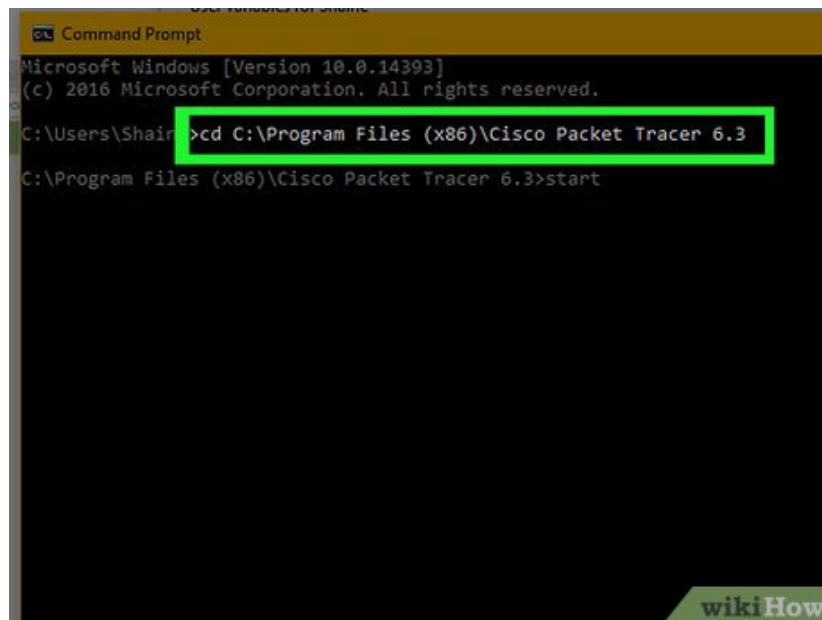
Click **OK**. This will save your path.

18.



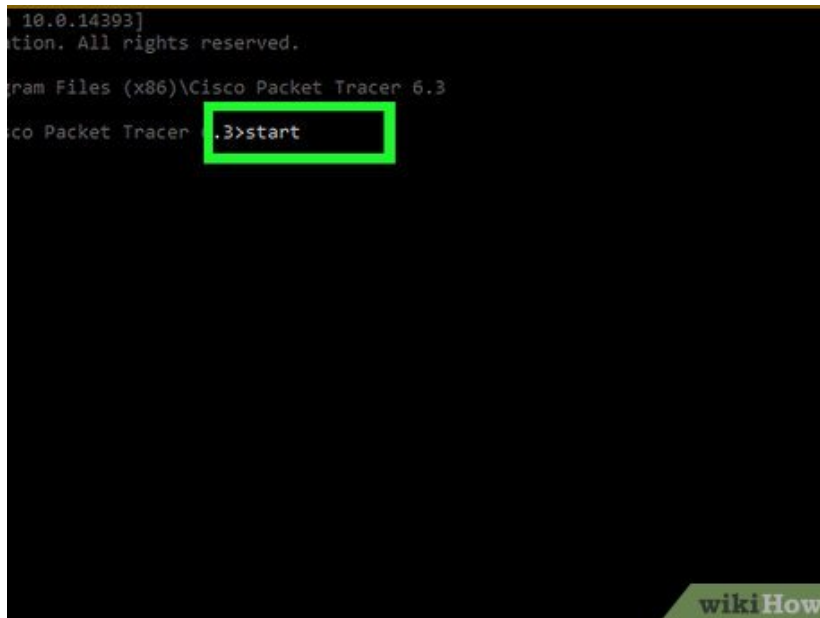
**Open Command Prompt.**

19.



**Open your path.** Type `cd` into Command Prompt, type one space, press `Ctrl + V` to enter your program's path, and press `Enter`.

20.



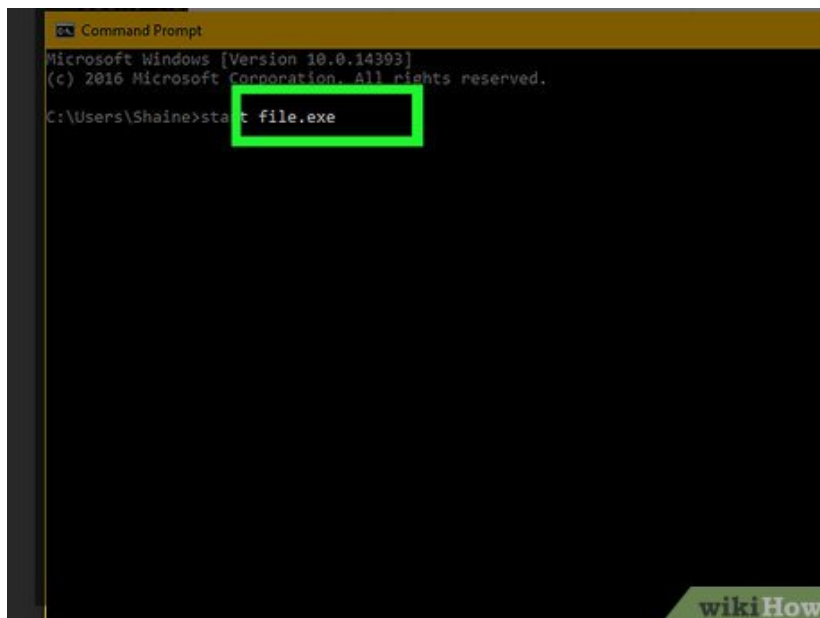
```
10.0.14393]
tion. All rights reserved.

ram Files (x86)\Cisco Packet Tracer 6.3
co Packet Tracer .3>start
```

A screenshot of a Command Prompt window with a black background and white text. The text shows the IP address 10.0.14393, a copyright notice, and the path C:\Program Files (x86)\Cisco Packet Tracer 6.3. The command prompt shows '.3>start' with a green rectangular highlight around the word 'start'.

Type `start` into Command Prompt. Make sure you leave a space after `start`.

21.



```
Command Prompt
Microsoft Windows [Version 10.0.14393]
(c) 2016 Microsoft Corporation. All rights reserved.
C:\Users\Shaine>start file.exe
```

A screenshot of a Command Prompt window with a black background and white text. The title bar says 'Command Prompt'. The text shows 'Microsoft Windows [Version 10.0.14393]', '(c) 2016 Microsoft Corporation. All rights reserved.', and the path 'C:\Users\Shaine>start file.exe' with a green rectangular highlight around the command.

**Enter your program's name.** Type in the name of the program exactly as it appears in the folder, then press `Enter`. The program will run.

1. If there are spaces in the program's name, place an underscore (" \_ ") where a space should go (e.g., `system_shock` rather than `system shock`).
2. Alternatively, you can enclose the path in double quotes. (eg: `start "C:\Program Files\Windows Media Player\wmplayer.exe"` )

You finished reading the article "**How to Run a Program on Command Prompt**" edited by the [TipsMake](#) team. We hope this article has provided you with many useful tech tips and tricks. You can search for similar articles on tips and guides. Thank you for reading and for following us regularly.

---

