

# How to reverse the direction of the mouse scroll on Windows 10

Microsoft provides the option for users of the touchpad, the mouse changes the direction of the mouse scroll in Windows 10 and this is how it works.

On Windows 10, mouse and touchpads are essential input devices that make it easy to navigate and interact with on-screen elements.

However, they have the default scrolling direction (scroll down to scroll up), although it works with most users, but that's not a hobby that everyone agrees or needs. Left-handed people may also prefer the opposite direction.

Microsoft provides the option for the touchpad user to change the mouse scroll direction in Windows 10. However, you do not have the corresponding option to change the mouse scroll direction for the mouse wheel. If you want, you need to edit the value in the registry.

1. How to change mouse settings in Windows
2. How to use the mouse scroll bar to quickly open the folder?
3. Summary of Touchpad operations on Windows 10

## How to reverse the direction of scrolling on the Windows 10 touchpad

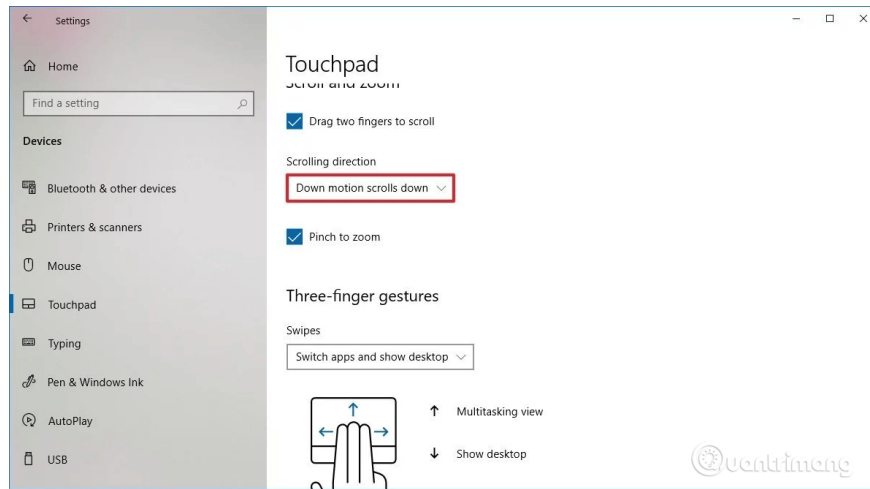
To reverse the direction of scrolling, follow the steps below:

**Step 1** . Open the Windows **Settings** application.

**Step 2** . Navigate to **Devices** .

**Step 3** . Select the **Touchpad** option. It will only appear if the touchpad is supported by Microsoft. Most high-end or mid-range computers have this option.

**Step 4** . On the **Scroll and Zoom section** , select **Down Motion Scrolls Down** from the **Scrolling Direction** drop-down menu. Now your scrolling direction has been reversed.



To return to the normal direction, simply reverse the above process.

## How to reverse the direction of the mouse scroll on Windows 10

If you use the mouse to navigate on Windows 10, the **Settings** application does not have the option to reverse the direction of scrolling. However, you can still modify the mouse scrolling behavior using the Registry.

**Warning:** Editing the Registry can cause a malfunction or even a system failure if not done correctly. Therefore, you should back up the registry before doing so to prevent a problem.

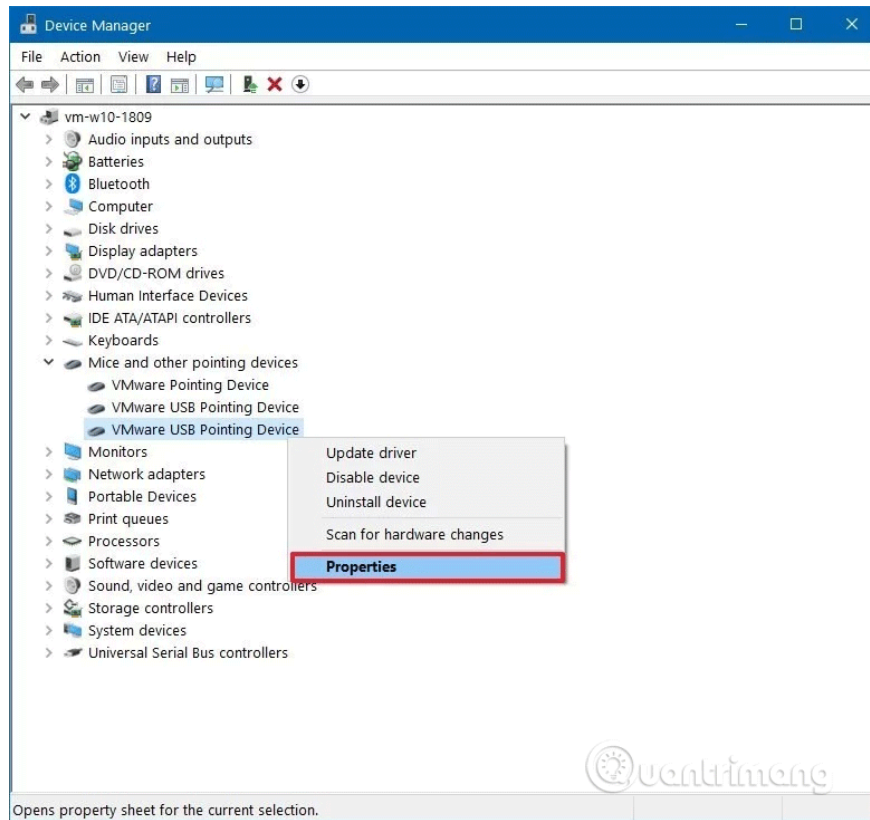
First, we need to find the mouse identifier on Windows 10, follow these steps:

**Step 1 .** Open **Start** .

**Step 2 .** Search for **Device Manager** , click on the appropriate result.

**Step 3 .** Expand the **Mice and other pointing devices** section .

**Step 4 .** Right-click on the mouse in use and select the **Properties** option.

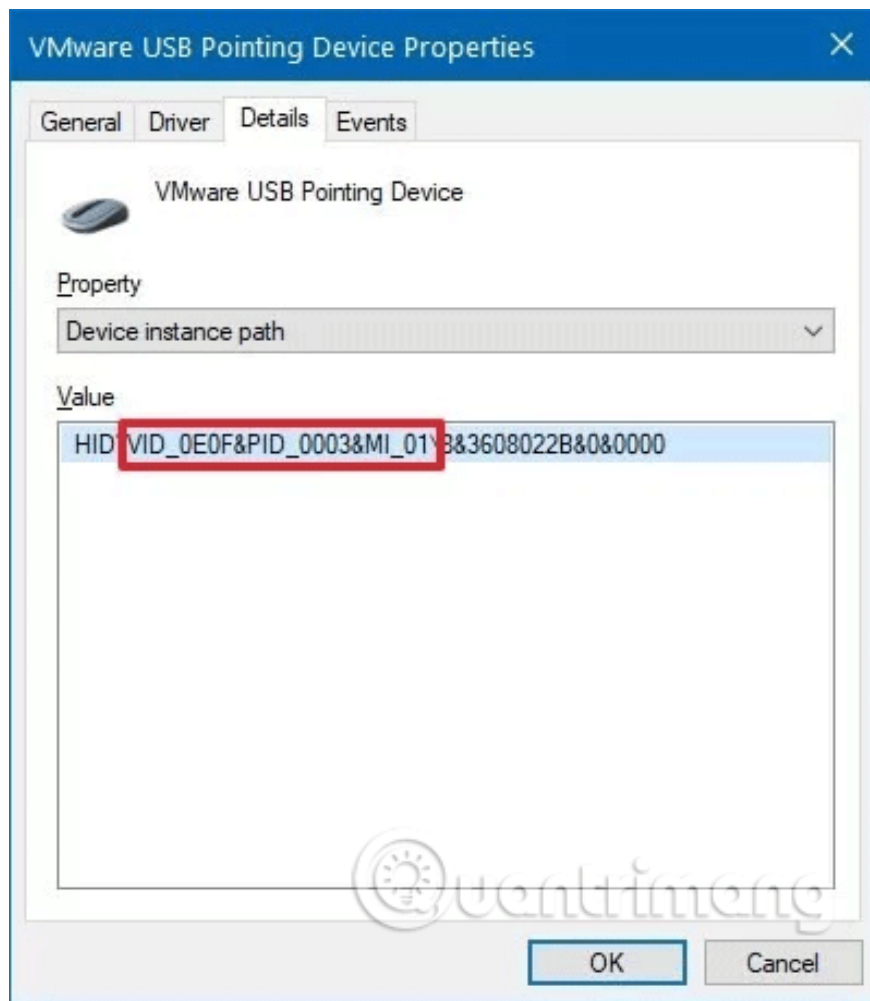


**Step 5** . Click on the **Details** tab.

**Step 6** . Use the **Property** drop-down menu and select **Device instance path** .

**Step 7** . Record the mouse VID ID value.

For example: VID\_0E0F & PID\_0003 & MI\_01.



After obtaining the mouse ID, perform the following steps to reverse the direction of the mouse scroll using the Registry.

**Step 1** . Press Win + R to open **Run** .

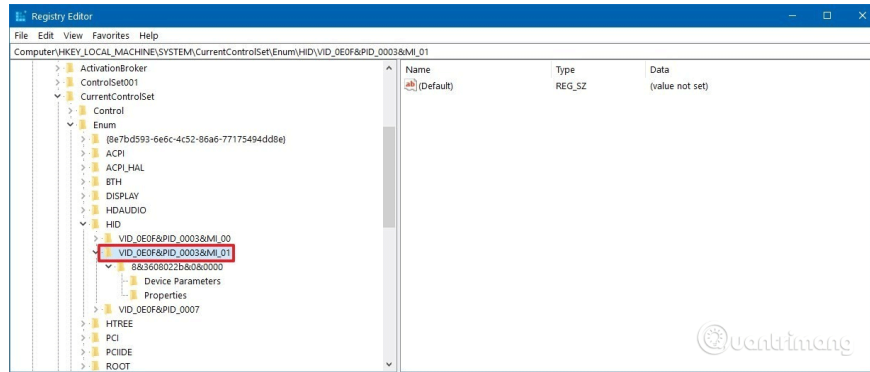
**Step 2** . Type **regedit** , click **Ok** to open the Registry.

**Step 3** . Browse to the following location:

```
Computer\HKEY_LOCAL_MACHINE\SYSTEM\CurrentControlSet\Enum\HID
```

**Tip:** On Windows 10, you can now copy and paste the path into the address bar of the Registry to quickly move to the main destination.

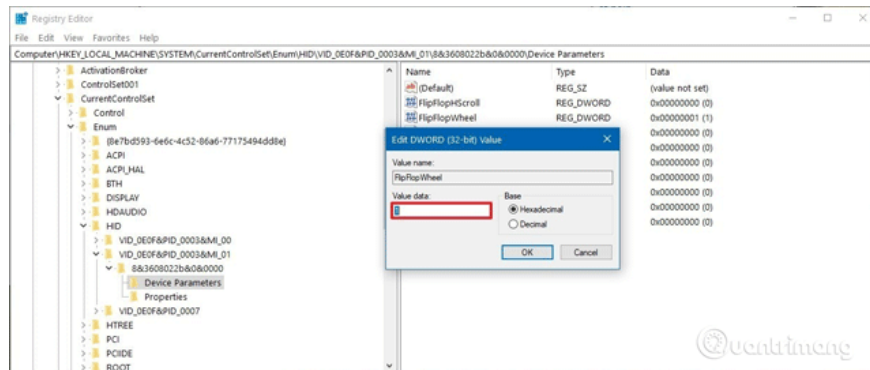
**Step 4** . Expand the key (directory) that matches the mouse's VID ID. For example: VID\_0E0F & PID\_0003 & MI\_01.



**Step 5** . Extended key available.

**Step 6** . Select key **Device Parameters** .

**Step 7** . Double-click **FlipFlopWheel DWORD** and set the value from **0** to **1** .



**Step 8** . Click **OK** .

**Step 9** . Restart the computer.

If you want to return to the default scrolling direction. Just reset the value from **1** to **0** .

I wish you all success!

You finished reading the article "**How to reverse the direction of the mouse scroll on Windows 10**" edited by the [TipsMake](#) team. We hope this article has provided you with many useful tech tips and tricks. You can search for similar articles on tips and guides. Thank you for reading and for following us regularly.