

How to restore the classic blue PowerShell interface in Windows 11

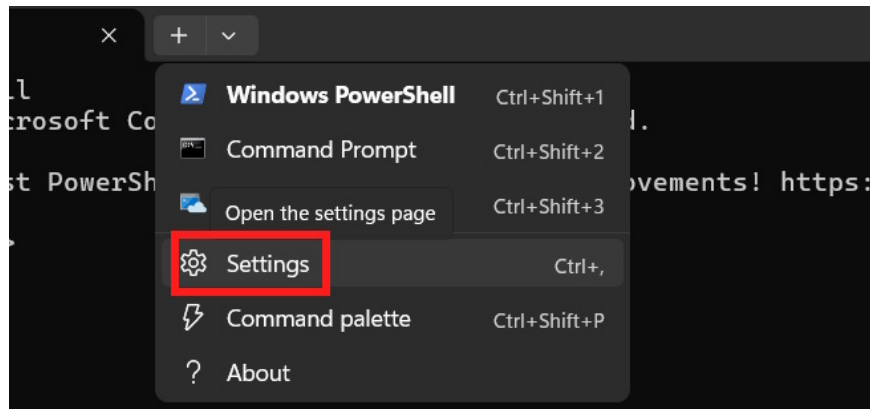
Windows Terminal has set a dark theme to apply to all command-line configurations. However, many users are more familiar with the classic blue color of PowerShell.

On Windows 11, the Windows Terminal uses a dark theme applied to all command-line configurations. This design choice helps create a consistent experience when switching between Command Prompt, PowerShell, and other shells within the same window. However, many people are more familiar with the classic blue PowerShell interface because it's easier to distinguish which environment to work in. Below are instructions on how to restore the blue PowerShell interface.

Restore the classic PowerShell blue color via Terminal.

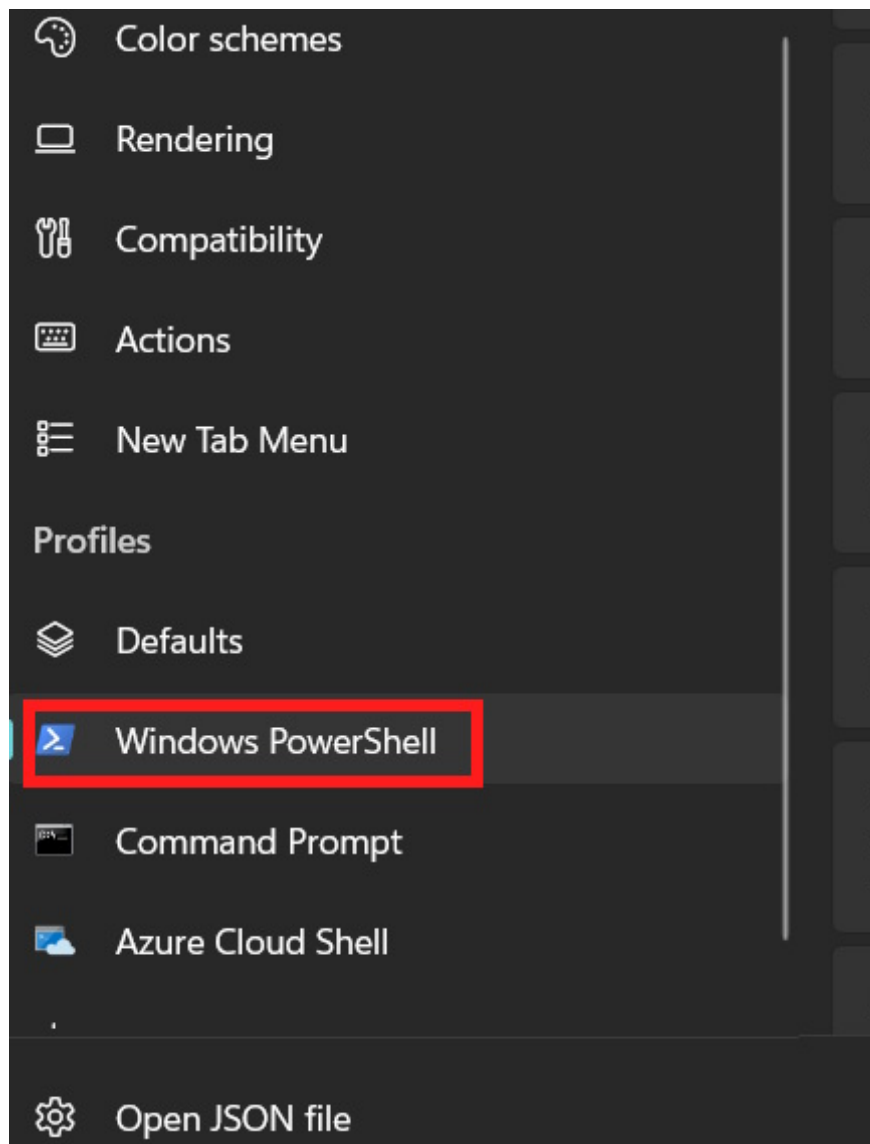
Step 1:

Open **Terminal** on your computer, then click **the arrow icon** and select **Settings** .

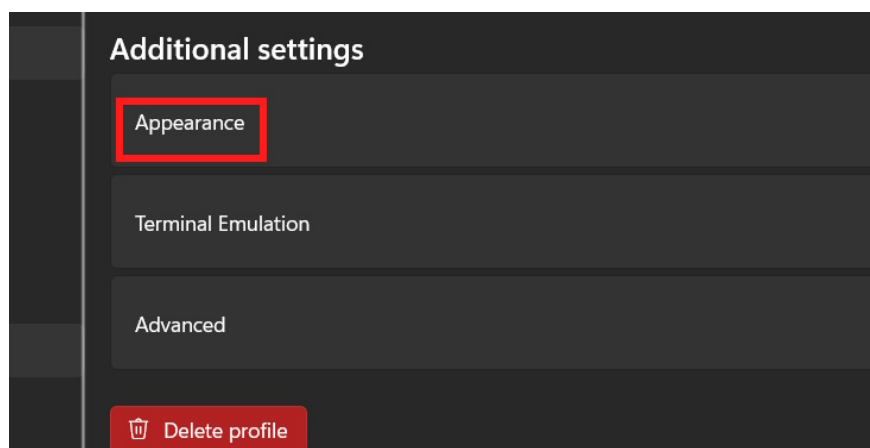


Step 2:

Once the settings interface is displayed, **click on Windows PowerShell** to make changes.



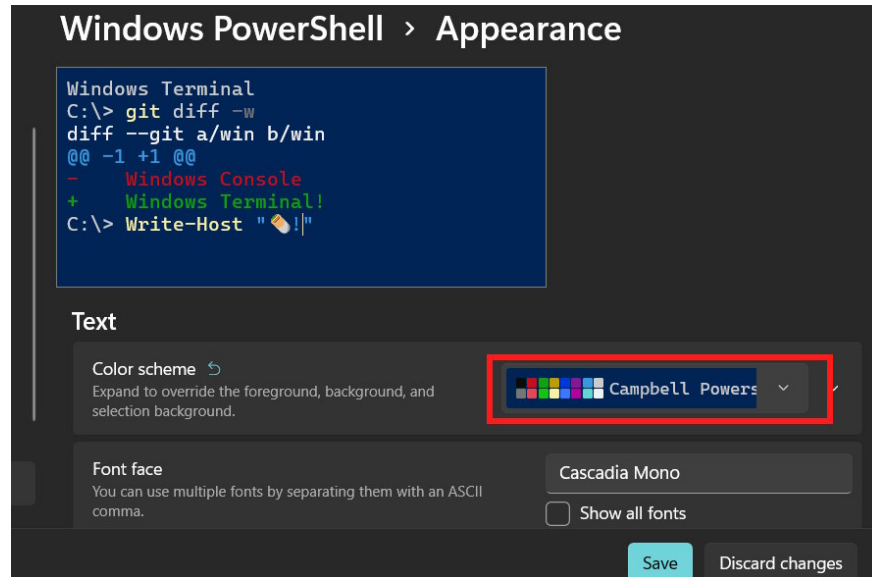
Look to the side and click on **Appearance** to customize the look and feel of Windows PowerShell.



Step 3:

In the interface shown in the image, under **the Color scheme section** , select **Campbell PowerShell** from the list. You will then see the PowerShell interface turn blue as shown in the image.

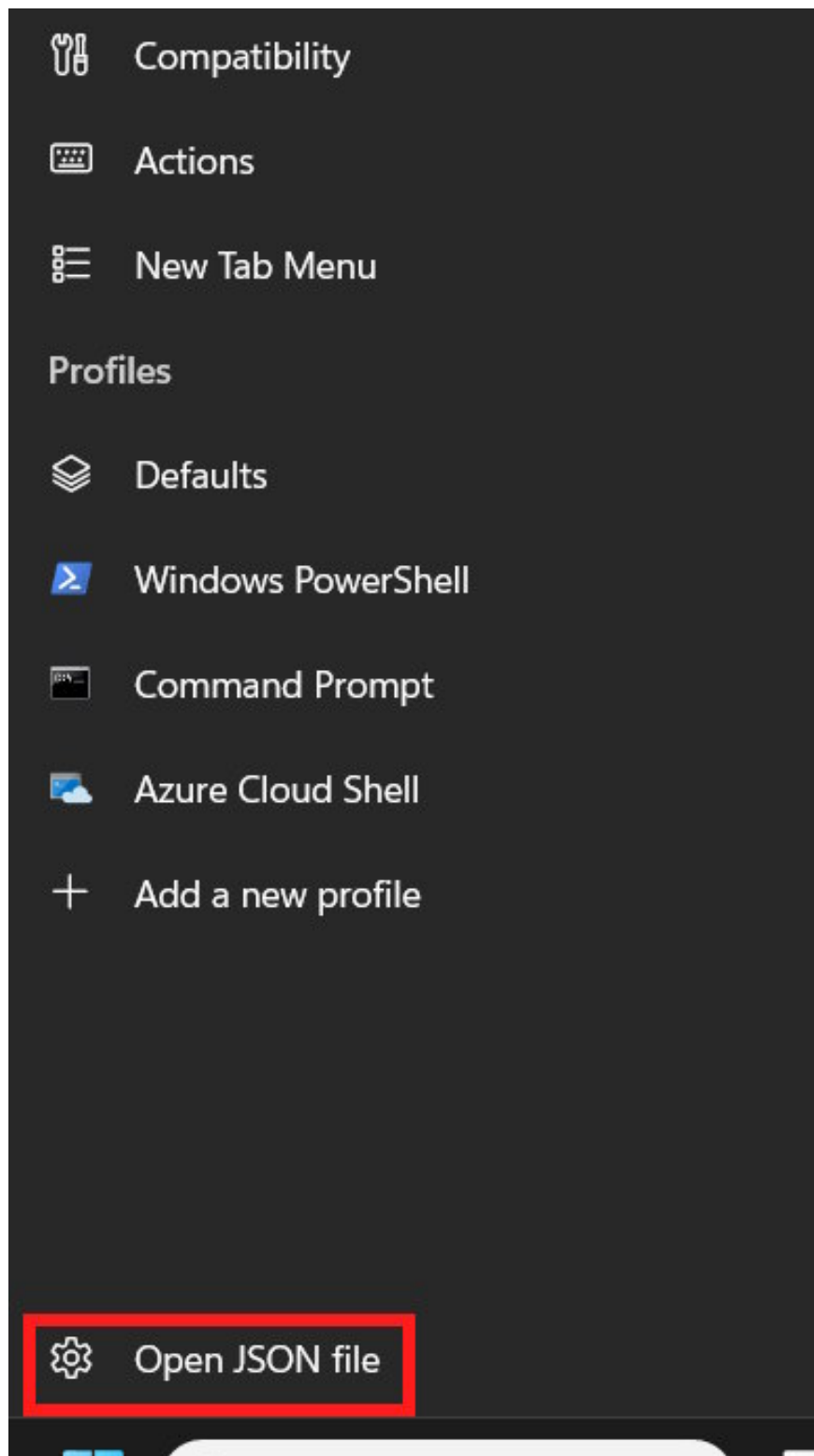
Finally, **click Save** to save the new changes to the interface.



How to revert to classic green PowerShell colors via JSON file

Step 1:

In the PowerShell settings interface, select **"Open JSON file"** at the bottom of the interface.



Step 2:

In the JSON file opener, find **the profiles section** , scroll down to **the square brackets** , and paste the command below to change the information.

```
"colorScheme": "Campbell Powershell"
```

Finally, press **Ctrl + S** to save .

```
},
"profiles":
{
  "defaults":
  {
    "rightClickContextMenu": true
  },
  "list":
  [
    { "colorScheme": "Campbell Powershell"
      "commandline": "%SystemRoot%\System32\WindowsPowerShell\
      "guid": "{61c54bbd-c2c6-5271-96e7-009a87ff44bf}",
      "hidden": false,
      "name": "Windows PowerShell"
    },
    {
      "commandline": "%SystemRoot%\System32\cmd.exe",
      "guid": "{0caa0dad-35be-5f56-a8ff-afceeeaa6101}",
      "hidden": false,
      "name": "Command Prompt"
    }
  ]
}
```

You finished reading the article "**How to restore the classic blue PowerShell interface in Windows 11**" edited by the [TipsMake](#) team. We hope this article has provided you with many useful tech tips and tricks. You can search for similar articles on tips and guides. Thank you for reading and for following us regularly.