

# How to restore the default font on Windows 10

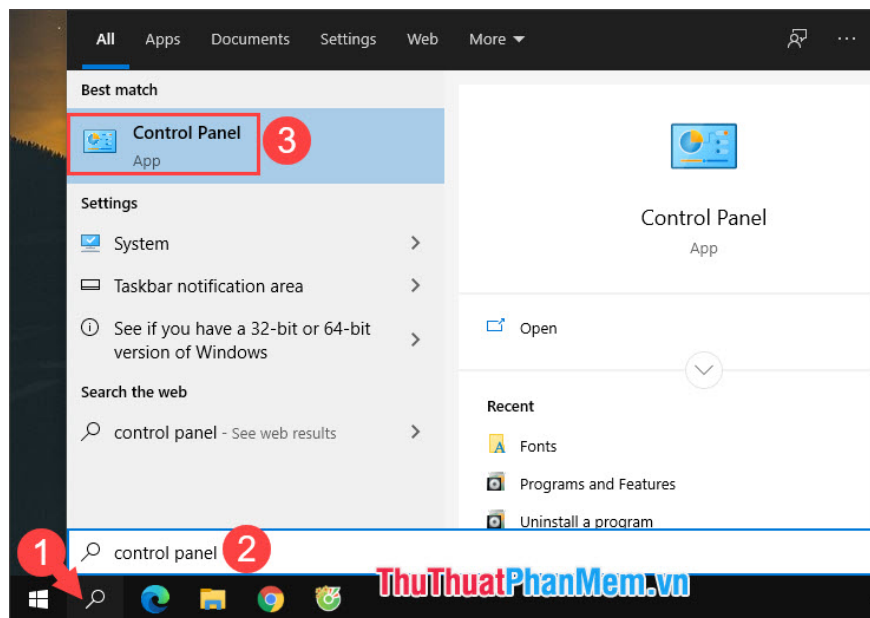
You accidentally 'scratched' the font on Windows 10 and want to return to the default font? In the tutorial below, TipsMake.com shares with readers how to restore the default font quickly and easily.

You accidentally 'scratched' the font on Windows 10 and want to return to the default font? In the tutorial below, TipsMake.com shares with readers how to restore the default font quickly and easily.

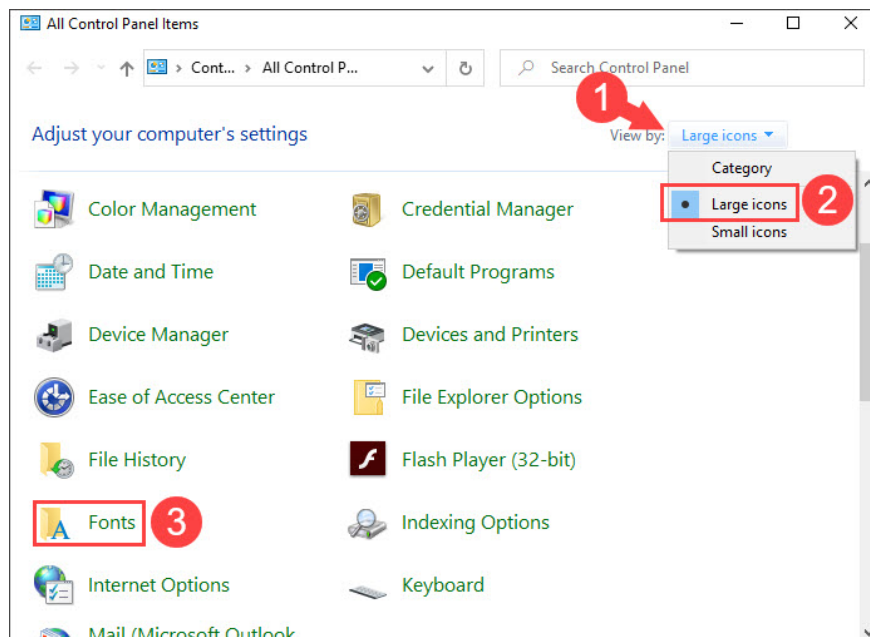


## Method 1: Restore default font with Font Settings

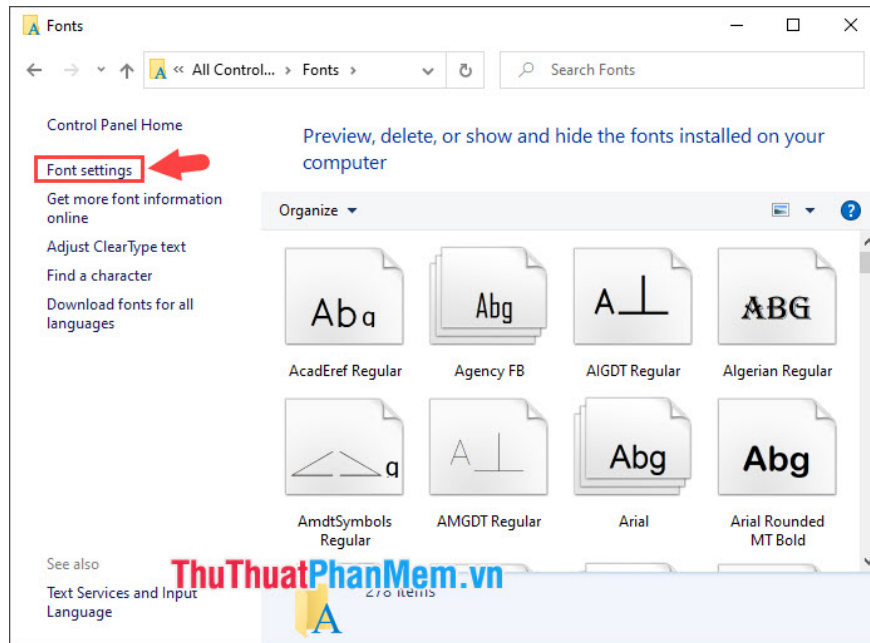
**Step 1:** You click on the icon **Search (1)** or press the **Windows + S**. Next, enter the keyword **control panel (2)** => click on the **Control Panel** app **(3)** in the first result.



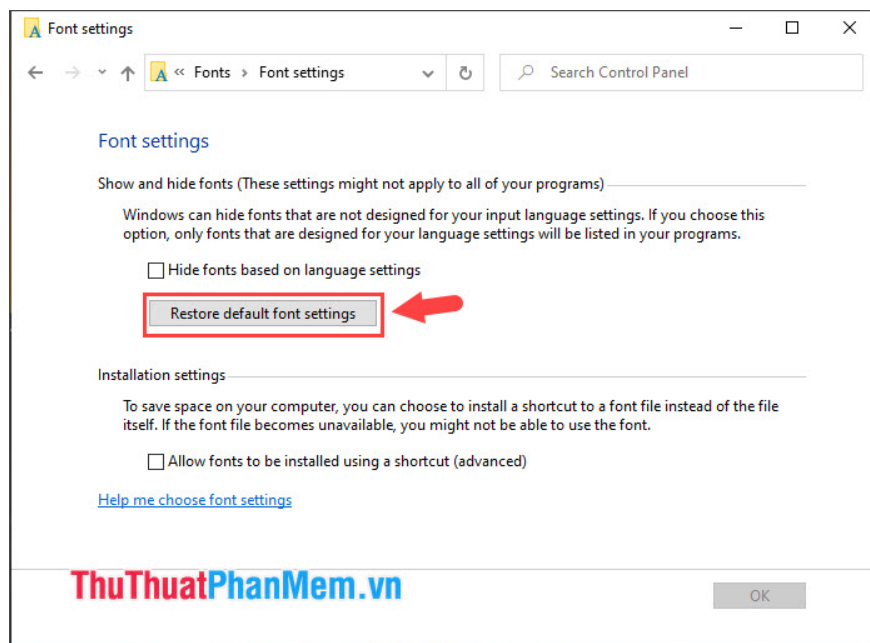
**Step 2:** Click on **View by** (1) to switch to **Large icon** (2) . Next, select **Fonts** (3) .



**Step 3:** Click on **Font settings** .



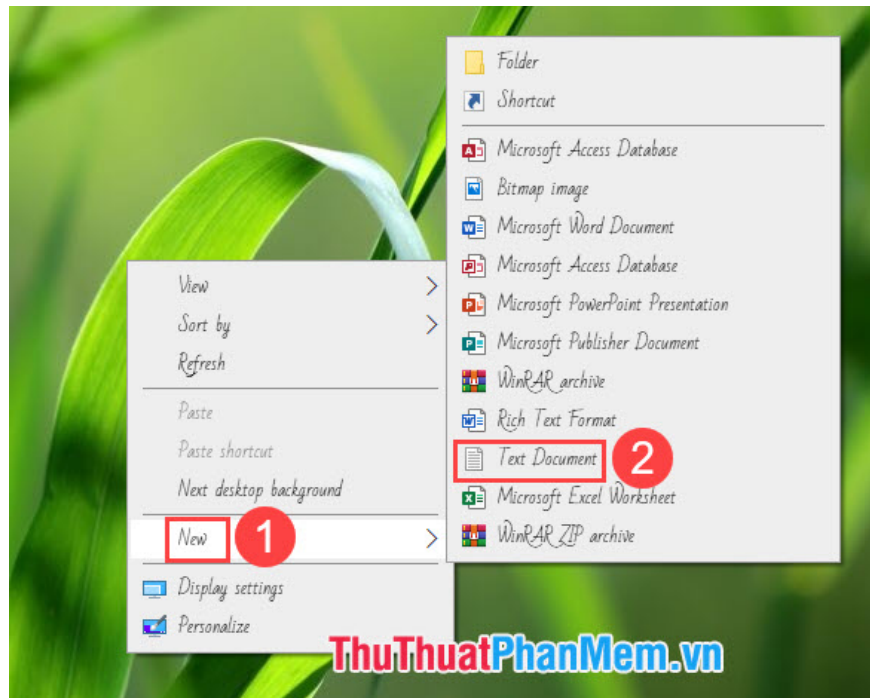
**Step 4:** Click on **Restore default font settings** section .



## Method 2: Restore default font via registry

In case you miss and the font interface on Windows 10 is changed, you can apply this method to switch back to the default font. Please do the following:

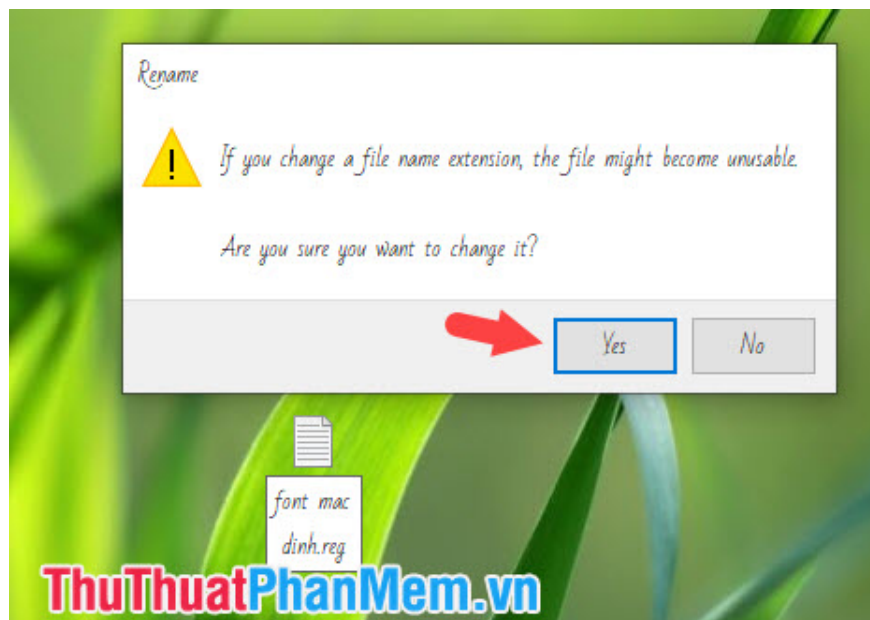
**Step 1:** Right-click on the desktop and select **New (1)** => **Text Document (2)** .



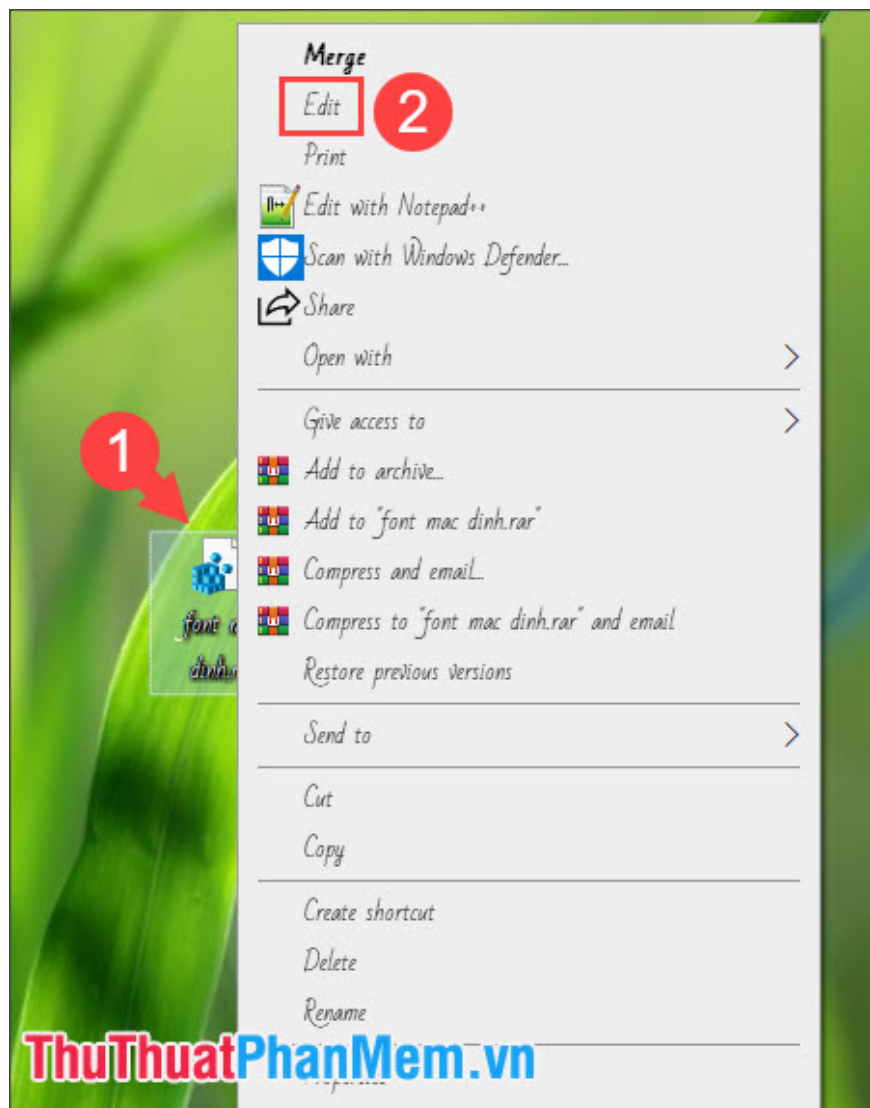
**Step 2:** You rename the file to the **font mac dinh.reg** or any other name but must have the extension **.reg**.



After the message appears, click **Yes** .



**Step 3:** Right-click the .reg file (1) => **Edit** (2) .



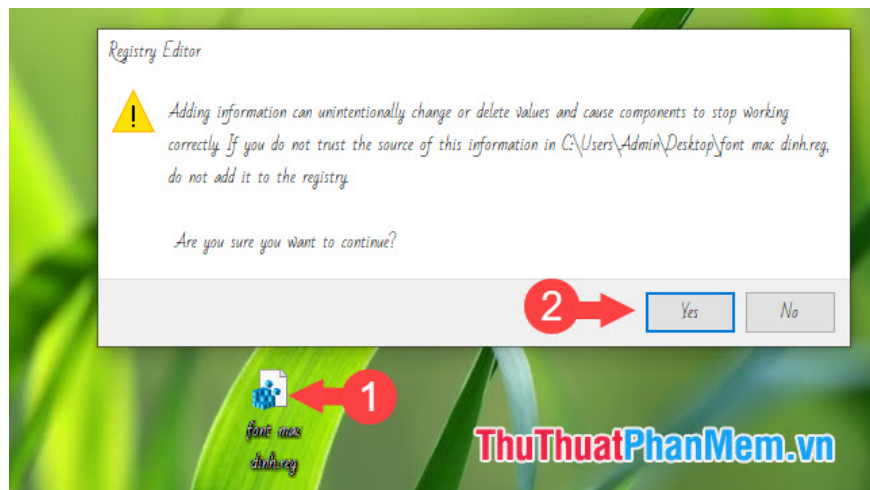
**Step 4:** Paste the following code into **Notepad**

```
Windows Registry Editor Version 5.00 [HKEY_LOCAL_MACHINE\SOFTWARE\Microsoft\Windows
```

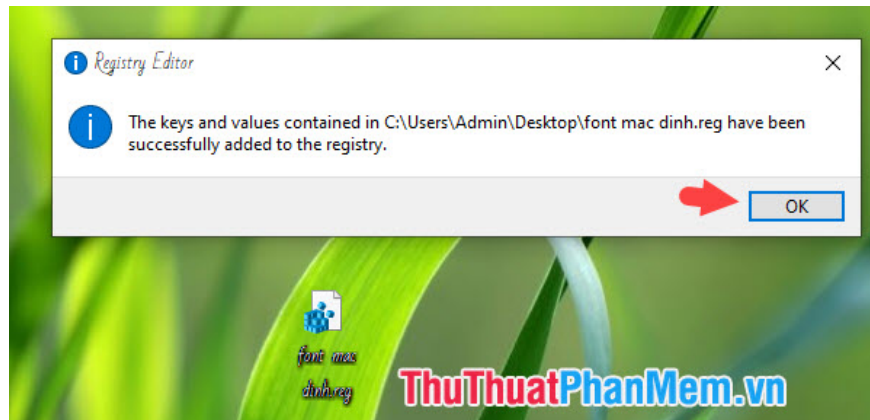
Then you save with the shortcut **Ctrl + S** and exit Notepad.

```
font_mac_dinh.reg - Notepad
File Edit Format View Help
Windows Registry Editor Version 5.00
[HKEY_LOCAL_MACHINE\SOFTWARE\Microsoft\Windows NT\CurrentVersion\Fonts]
"Segoe UI (TrueType)"="segoeui.ttf"
"Segoe UI Black (TrueType)"="seguibl.ttf"
"Segoe UI Black Italic (TrueType)"="seguibli.ttf"
"Segoe UI Bold (TrueType)"="segoeui.ttf"
"Segoe UI Bold Italic (TrueType)"="segoeui.ttf"
"Segoe UI Emoji (TrueType)"="seguiemj.ttf"
"Segoe UI Historic (TrueType)"="seguihis.ttf"
"Segoe UI Italic (TrueType)"="segoeui.ttf"
"Segoe UI Light (TrueType)"="segoeui.ttf"
"Segoe UI Light Italic (TrueType)"="seguili.ttf"
"Segoe UI Semibold (TrueType)"="seguisb.ttf"
"Segoe UI Semibold Italic (TrueType)"="seguisbi.ttf"
"Segoe UI Semilight (TrueType)"="segoeui.ttf"
"Segoe UI Semilight Italic (TrueType)"="seguisli.ttf"
"Segoe UI Symbol (TrueType)"="seguisym.ttf"
"Segoe MDL2 Assets (TrueType)"="segmdl2.ttf"
"Segoe Print (TrueType)"="segoepr.ttf"
"Segoe Print Bold (TrueType)"="segoeprb.ttf"
"Segoe Script (TrueType)"="segoesc.ttf"
"Segoe Script Bold (TrueType)"="segoescb.ttf"
[HKEY_LOCAL_MACHINE\SOFTWARE\Microsoft\Windows NT\CurrentVersion\FontSubstitutes]
"Segoe UI"=-
ThuThuatPhanMem.vn
Ln 24, Col 13 100% Windows (CR/LF) UTF-8
```

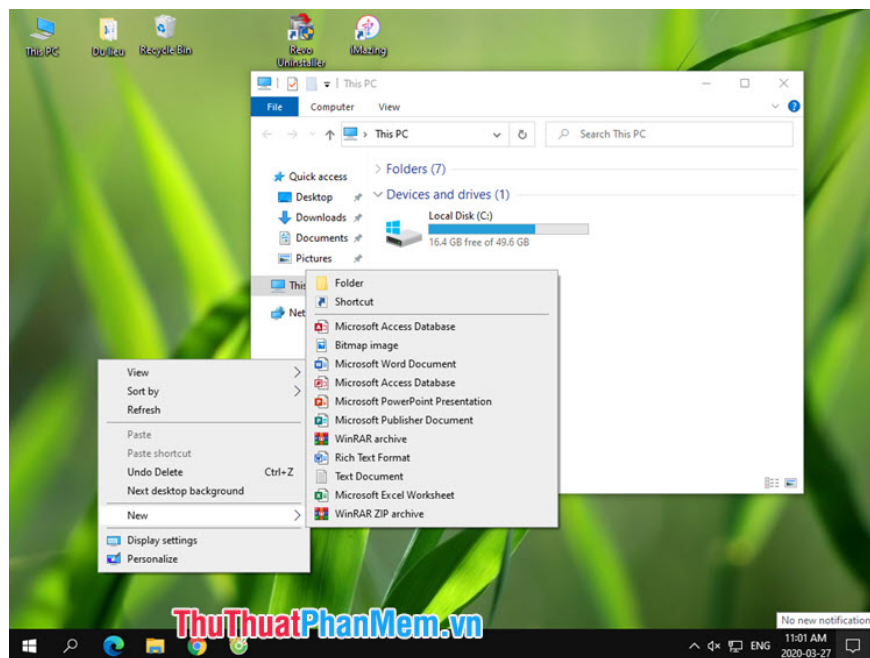
**Step 5:** Click on the **.reg** file (1) you just edited. If the following message appears, click **Yes** (2) .



**Step 6:** After the **success** message appears, it is completed. Please click **OK** and reboot to apply the default font.



After booting, open the application and right-click menu to check if the font has been converted to default is not successful.



Through the guide in the article, you can return to the default font quickly and conveniently. Good luck!

You finished reading the article "**How to restore the default font on Windows 10**" edited by the [TipsMake](#) team. We hope this article has provided you with many useful tech tips and tricks. You can search for similar articles on tips and guides. Thank you for reading and for following us regularly.